

EXTRACTION OIL & GAS

Location: COLORADO Slot: SLOT#05 VARRA #5(1641'FSL & 789'FWL,SEC.05)
Field: WELD COUNTY (NAD83/TRUE NORTH) Well: VARRA #5
Facility: SEC.05-T06N-R67W Wellbore: VARRA #5 PWB

Plot reference wellpath is VARRA #5 (REV-A.0) PWP

True vertical depths are referenced to RIG (RKB)	Grid System: NAD83 / Lambert Colorado SP, Northern Zone (501), US feet
Measured depths are referenced to RIG (RKB)	North Reference: True north
RIG (RKB) to Mean Sea Level: 4898 feet	Scale: True distance
Mean Sea Level to Mud line (At Slot: SLOT#05 VARRA #5(1641'FSL & 789'FWL,SEC.05)): 0 feet	Depths are in feet
Coordinates are in feet referenced to Slot	Created by: painsetr on 4/29/2014

Location Information

Facility Name			Grid East (US ft)	Grid North (US ft)	Latitude	Longitude
SEC.05-T06N-R67W			3160186.786	1430380.222	40°30'48.118"N	104°55'25.957"W
Slot	Local N (ft)	Local E (ft)	Grid East (US ft)	Grid North (US ft)	Latitude	Longitude
SLOT#05 VARRA #5(1641'FSL & 789'FWL,SEC.05)	-103.83	-0.85	3160186.611	1430276.391	40°30'47.092"N	104°55'25.968"W
RIG (RKB) to Mud line (At Slot: SLOT#05 VARRA #5(1641'FSL & 789'FWL,SEC.05))					4898ft	
Mean Sea Level to Mud line (At Slot: SLOT#05 VARRA #5(1641'FSL & 789'FWL,SEC.05))					0ft	
RIG (RKB) to Mean Sea Level					4898ft	

Targets

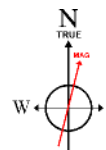
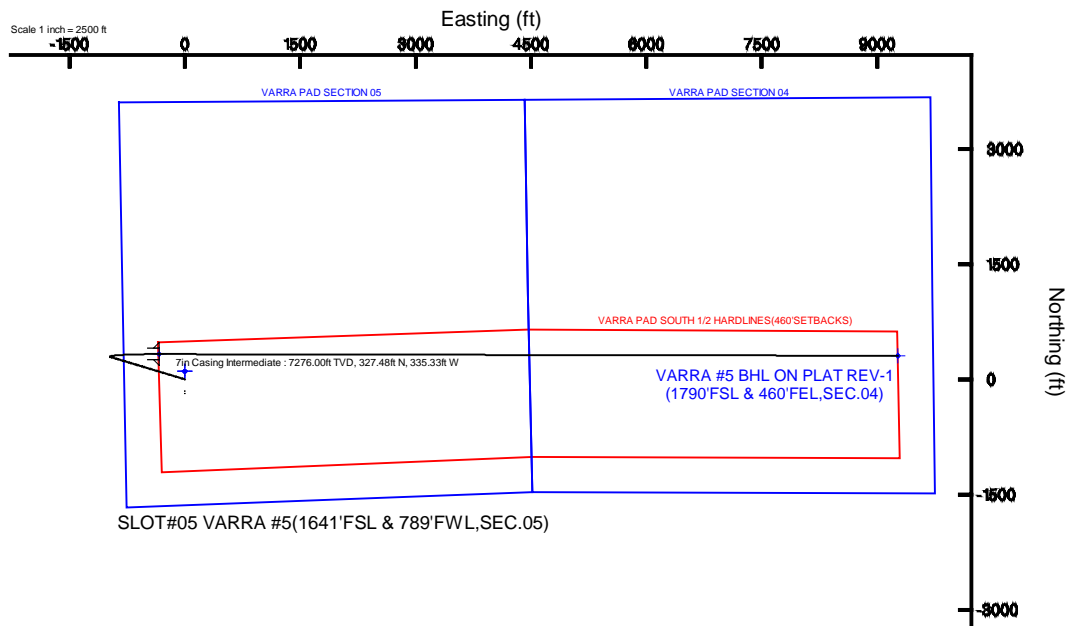
Name	MD (ft)	TVD (ft)	Local N (ft)	Local E (ft)	Grid East (US ft)	Grid North (US ft)	Latitude	Longitude
VARRA PAD SECTION 04		0.00	103.79	0.83	3160186.77	1430380.18	40°30'48.118"N	104°55'25.957"W
VARRA PAD SECTION 05		0.00	103.79	0.83	3160186.77	1430380.18	40°30'48.118"N	104°55'25.957"W
VARRA #5 BHL ON PLAT REV-1(1790'FSL & 460'FEL,SEC.04)	17338.39	7276.00	306.27	9271.92	3165456.03	1430642.88	40°30'50.101"N	104°53'25.922"W
VARRA #5 LANDING POINT	7731.11	7276.00	327.48	-335.33	3158849.17	1430601.68	40°30'50.328"N	104°55'30.310"W
VARRA PAD SOUTH 1/2 HARDLINE(460'SETBACKS)		7420.00	103.79	0.83	3160186.77	1430380.18	40°30'48.118"N	104°55'25.957"W

Survey Program

Start MD (ft)	End MD (ft)	Tool	Model	Log Name/Comment	Wellbore
24.00	18000.00	NaviTrak	NaviTrak (Standard)		VARRA #5 PWB

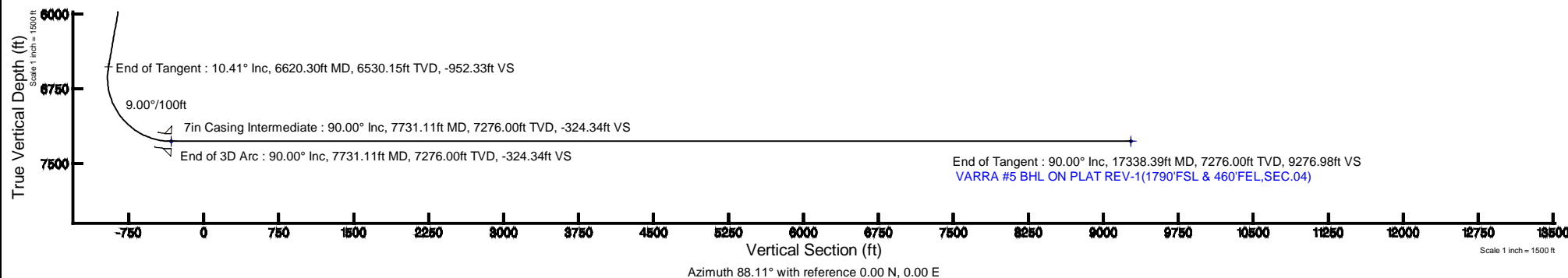
Well Profile Data

Design Comment	MD (ft)	Inc (°)	Az (°)	TVD (ft)	Local N (ft)	Local E (ft)	DLS (°/100ft)	VS (ft)
Tie On	24.00	0.000	286.750	24.00	0.00	0.00	0.00	0.00
End of Tangent	800.00	0.000	286.750	800.00	0.00	0.00	0.00	0.00
End of Build	1320.65	10.413	286.750	1317.79	13.60	-45.18	2.00	-44.71
End of Tangent	6620.30	10.413	286.750	6530.15	289.66	-962.41	0.00	-952.33
End of 3D Arc	7731.11	90.000	90.126	7276.00	327.48	-335.33	9.00	-324.34
End of Tangent	17338.39	90.000	90.126	7276.00	306.27	9271.92	0.00	9276.98



BGGM (1945.0 to 2015.0) Dip: 67.00° Field: 52835.3 nT
Magnetic North is 8.62 degrees East of True North (at 4/17/2014)

To correct azimuth from Magnetic to True add 8.62 degrees





Planned Wellpath Report

VARRA #5 (REV-A.0) PWP

Page 1 of 8



REFERENCE WELLPATH IDENTIFICATION

Operator	EXTRACTION OIL & GAS	Slot	SLOT#05 VARRA #5(1641'FSL & 789'FWL,SEC.05)
Area	COLORADO	Well	VARRA #5
Field	WELD COUNTY (NAD83/TRUE NORTH)	Wellbore	VARRA #5 PWB
Facility	SEC.05-T06N-R67W		

REPORT SETUP INFORMATION

Projection System	NAD83 / Lambert Colorado SP, Northern Zone (501), US feet	Software System	WellArchitect® 4.0.0
North Reference	True	User	Painsetr
Scale	0.999967	Report Generated	4/29/2014 at 1:50:34 PM
Convergence at slot	n/a	Database/Source file	WA_Denver/VARRA_#5_PWB.xml

WELLPATH LOCATION

	Local coordinates		Grid coordinates		Geographic coordinates	
	North[ft]	East[ft]	Easting[US ft]	Northing[US ft]	Latitude	Longitude
Slot Location	-103.83	-0.85	3160186.61	1430276.39	40°30'47.092"N	104°55'25.968"W
Facility Reference Pt			3160186.79	1430380.22	40°30'48.118"N	104°55'25.957"W
Field Reference Pt			3185481.27	1419166.81	40°28'55.560"N	104°49'59.556"W

WELLPATH DATUM

Calculation method	Minimum curvature	RIG (RKB) to Facility Vertical Datum	4898.00ft
Horizontal Reference Pt	Slot	RIG (RKB) to Mean Sea Level	4898.00ft
Vertical Reference Pt	RIG (RKB)	RIG (RKB) to Mud Line at Slot (SLOT#05 VARRA #5(1641'FSL & 789'FWL,SEC.05))	4898.00ft
MD Reference Pt	RIG (RKB)	Section Origin	N 0.00, E 0.00 ft
Field Vertical Reference	Mean Sea Level	Section Azimuth	88.11°



Planned Wellpath Report

VARRA #5 (REV-A.0) PWP

Page 2 of 8



REFERENCE WELLPATH IDENTIFICATION

Operator	EXTRACTION OIL & GAS	Slot	SLOT#05 VARRA #5(1641'FSL & 789'FWL,SEC.05)
Area	COLORADO	Well	VARRA #5
Field	WELD COUNTY (NAD83/TRUE NORTH)	Wellbore	VARRA #5 PWB
Facility	SEC.05-T06N-R67W		

WELLPATH DATA (180 stations) † = interpolated/extrapolated station

MD [ft]	Inclination [°]	Azimuth [°]	TVD [ft]	Vert Sect [ft]	North [ft]	East [ft]	DLS [°/100ft]	Comments
0.00†	0.000	286.750	0.00	0.00	0.00	0.00	0.00	
24.00	0.000	286.750	24.00	0.00	0.00	0.00	0.00	Tie On
124.00†	0.000	286.750	124.00	0.00	0.00	0.00	0.00	
224.00†	0.000	286.750	224.00	0.00	0.00	0.00	0.00	
324.00†	0.000	286.750	324.00	0.00	0.00	0.00	0.00	
424.00†	0.000	286.750	424.00	0.00	0.00	0.00	0.00	
524.00†	0.000	286.750	524.00	0.00	0.00	0.00	0.00	
624.00†	0.000	286.750	624.00	0.00	0.00	0.00	0.00	
724.00†	0.000	286.750	724.00	0.00	0.00	0.00	0.00	
800.00	0.000	286.750	800.00	0.00	0.00	0.00	0.00	End of Tangent
824.00†	0.480	286.750	824.00	-0.10	0.03	-0.10	2.00	
924.00†	2.480	286.750	923.96	-2.54	0.77	-2.57	2.00	
1024.00†	4.480	286.750	1023.77	-8.29	2.52	-8.38	2.00	
1124.00†	6.480	286.750	1123.31	-17.34	5.27	-17.53	2.00	
1224.00†	8.480	286.750	1222.45	-29.68	9.03	-29.99	2.00	
1320.65	10.413	286.750	1317.79	-44.71	13.60	-45.18	2.00	End of Build
1324.00†	10.413	286.750	1321.08	-45.28	13.77	-45.76	0.00	
1424.00†	10.413	286.750	1419.44	-62.41	18.98	-63.07	0.00	
1524.00†	10.413	286.750	1517.79	-79.53	24.19	-80.37	0.00	
1624.00†	10.413	286.750	1616.14	-96.66	29.40	-97.68	0.00	
1724.00†	10.413	286.750	1714.50	-113.78	34.61	-114.99	0.00	
1824.00†	10.413	286.750	1812.85	-130.91	39.82	-132.30	0.00	
1924.00†	10.413	286.750	1911.20	-148.04	45.03	-149.60	0.00	
2024.00†	10.413	286.750	2009.55	-165.16	50.24	-166.91	0.00	
2124.00†	10.413	286.750	2107.91	-182.29	55.44	-184.22	0.00	
2224.00†	10.413	286.750	2206.26	-199.41	60.65	-201.53	0.00	
2324.00†	10.413	286.750	2304.61	-216.54	65.86	-218.83	0.00	
2424.00†	10.413	286.750	2402.97	-233.67	71.07	-236.14	0.00	
2524.00†	10.413	286.750	2501.32	-250.79	76.28	-253.45	0.00	
2624.00†	10.413	286.750	2599.67	-267.92	81.49	-270.76	0.00	



Planned Wellpath Report

VARRA #5 (REV-A.0) PWP

Page 3 of 8



REFERENCE WELLPATH IDENTIFICATION

Operator	EXTRACTION OIL & GAS	Slot	SLOT#05 VARRA #5(1641'FSL & 789'FWL,SEC.05)
Area	COLORADO	Well	VARRA #5
Field	WELD COUNTY (NAD83/TRUE NORTH)	Wellbore	VARRA #5 PWB
Facility	SEC.05-T06N-R67W		

WELLPATH DATA (180 stations) † = interpolated/extrapolated station

MD [ft]	Inclination [°]	Azimuth [°]	TVD [ft]	Vert Sect [ft]	North [ft]	East [ft]	DLS [°/100ft]	Comments
2724.00†	10.413	286.750	2698.03	-285.04	86.70	-288.06	0.00	
2824.00†	10.413	286.750	2796.38	-302.17	91.91	-305.37	0.00	
2924.00†	10.413	286.750	2894.73	-319.30	97.12	-322.68	0.00	
3024.00†	10.413	286.750	2993.08	-336.42	102.33	-339.99	0.00	
3124.00†	10.413	286.750	3091.44	-353.55	107.53	-357.29	0.00	
3224.00†	10.413	286.750	3189.79	-370.68	112.74	-374.60	0.00	
3324.00†	10.413	286.750	3288.14	-387.80	117.95	-391.91	0.00	
3424.00†	10.413	286.750	3386.50	-404.93	123.16	-409.22	0.00	
3524.00†	10.413	286.750	3484.85	-422.05	128.37	-426.52	0.00	
3624.00†	10.413	286.750	3583.20	-439.18	133.58	-443.83	0.00	
3724.00†	10.413	286.750	3681.56	-456.31	138.79	-461.14	0.00	
3824.00†	10.413	286.750	3779.91	-473.43	144.00	-478.45	0.00	
3924.00†	10.413	286.750	3878.26	-490.56	149.21	-495.75	0.00	
4024.00†	10.413	286.750	3976.62	-507.68	154.42	-513.06	0.00	
4124.00†	10.413	286.750	4074.97	-524.81	159.62	-530.37	0.00	
4224.00†	10.413	286.750	4173.32	-541.94	164.83	-547.68	0.00	
4324.00†	10.413	286.750	4271.67	-559.06	170.04	-564.98	0.00	
4424.00†	10.413	286.750	4370.03	-576.19	175.25	-582.29	0.00	
4524.00†	10.413	286.750	4468.38	-593.31	180.46	-599.60	0.00	
4624.00†	10.413	286.750	4566.73	-610.44	185.67	-616.91	0.00	
4724.00†	10.413	286.750	4665.09	-627.57	190.88	-634.21	0.00	
4824.00†	10.413	286.750	4763.44	-644.69	196.09	-651.52	0.00	
4924.00†	10.413	286.750	4861.79	-661.82	201.30	-668.83	0.00	
5024.00†	10.413	286.750	4960.15	-678.94	206.51	-686.14	0.00	
5124.00†	10.413	286.750	5058.50	-696.07	211.71	-703.44	0.00	
5224.00†	10.413	286.750	5156.85	-713.20	216.92	-720.75	0.00	
5324.00†	10.413	286.750	5255.20	-730.32	222.13	-738.06	0.00	
5424.00†	10.413	286.750	5353.56	-747.45	227.34	-755.37	0.00	
5524.00†	10.413	286.750	5451.91	-764.57	232.55	-772.67	0.00	
5624.00†	10.413	286.750	5550.26	-781.70	237.76	-789.98	0.00	



Planned Wellpath Report

VARRA #5 (REV-A.0) PWP

Page 4 of 8



REFERENCE WELLPATH IDENTIFICATION

Operator	EXTRACTION OIL & GAS	Slot	SLOT#05 VARRA #5(1641'FSL & 789'FWL,SEC.05)
Area	COLORADO	Well	VARRA #5
Field	WELD COUNTY (NAD83/TRUE NORTH)	Wellbore	VARRA #5 PWB
Facility	SEC.05-T06N-R67W		

WELLPATH DATA (180 stations) † = interpolated/extrapolated station

MD [ft]	Inclination [°]	Azimuth [°]	TVD [ft]	Vert Sect [ft]	North [ft]	East [ft]	DLS [°/100ft]	Comments
5724.00†	10.413	286.750	5648.62	-798.83	242.97	-807.29	0.00	
5824.00†	10.413	286.750	5746.97	-815.95	248.18	-824.60	0.00	
5924.00†	10.413	286.750	5845.32	-833.08	253.39	-841.90	0.00	
6024.00†	10.413	286.750	5943.68	-850.20	258.60	-859.21	0.00	
6124.00†	10.413	286.750	6042.03	-867.33	263.80	-876.52	0.00	
6224.00†	10.413	286.750	6140.38	-884.46	269.01	-893.83	0.00	
6324.00†	10.413	286.750	6238.73	-901.58	274.22	-911.13	0.00	
6424.00†	10.413	286.750	6337.09	-918.71	279.43	-928.44	0.00	
6524.00†	10.413	286.750	6435.44	-935.84	284.64	-945.75	0.00	
6620.30	10.413	286.750	6530.15	-952.33	289.66	-962.41	0.00	End of Tangent
6624.00†	10.095	287.302	6533.80	-952.95	289.85	-963.04	9.00	
6724.00†	3.077	348.110	6633.15	-961.71	295.09	-971.98	9.00	
6824.00†	8.881	70.466	6732.69	-954.81	300.31	-965.25	9.00	
6924.00†	17.611	80.593	6829.94	-932.41	305.38	-943.00	9.00	
7024.00†	26.519	84.079	6922.53	-895.06	310.16	-905.80	9.00	
7124.00†	35.471	85.895	7008.17	-843.70	314.55	-854.55	9.00	
7224.00†	44.440	87.053	7084.74	-779.57	318.43	-790.51	9.00	
7324.00†	53.418	87.890	7150.38	-704.26	321.72	-715.27	9.00	
7424.00†	62.401	88.552	7203.45	-619.63	324.32	-630.68	9.00	
7524.00†	71.386	89.112	7242.65	-527.75	326.18	-538.81	9.00	
7624.00†	80.373	89.616	7267.02	-430.90	327.25	-441.94	9.00	
7724.00†	89.361	90.093	7275.96	-331.45	327.50	-342.44	9.00	
7731.11	90.000	90.126	7276.00 ¹	-324.34	327.48	-335.33	9.00	End of 3D Arc
7824.00†	90.000	90.126	7276.00	-231.51	327.28	-242.44	0.00	
7924.00†	90.000	90.126	7276.00	-131.57	327.06	-142.45	0.00	
8024.00†	90.000	90.126	7276.00	-31.63	326.84	-42.45	0.00	
8124.00†	90.000	90.126	7276.00	68.31	326.62	57.55	0.00	
8224.00†	90.000	90.126	7276.00	168.24	326.40	157.55	0.00	
8324.00†	90.000	90.126	7276.00	268.18	326.18	257.55	0.00	
8424.00†	90.000	90.126	7276.00	368.12	325.96	357.55	0.00	



Planned Wellpath Report

VARRA #5 (REV-A.0) PWP

Page 5 of 8



REFERENCE WELLPATH IDENTIFICATION

Operator	EXTRACTION OIL & GAS	Slot	SLOT#05 VARRA #5(1641'FSL & 789'FWL,SEC.05)
Area	COLORADO	Well	VARRA #5
Field	WELD COUNTY (NAD83/TRUE NORTH)	Wellbore	VARRA #5 PWB
Facility	SEC.05-T06N-R67W		

WELLPATH DATA (180 stations) † = interpolated/extrapolated station

MD [ft]	Inclination [°]	Azimuth [°]	TVD [ft]	Vert Sect [ft]	North [ft]	East [ft]	DLS [°/100ft]	Comments
8524.00†	90.000	90.126	7276.00	468.06	325.73	457.55	0.00	
8624.00†	90.000	90.126	7276.00	568.00	325.51	557.55	0.00	
8724.00†	90.000	90.126	7276.00	667.93	325.29	657.55	0.00	
8824.00†	90.000	90.126	7276.00	767.87	325.07	757.55	0.00	
8924.00†	90.000	90.126	7276.00	867.81	324.85	857.55	0.00	
9024.00†	90.000	90.126	7276.00	967.75	324.63	957.55	0.00	
9124.00†	90.000	90.126	7276.00	1067.69	324.41	1057.55	0.00	
9224.00†	90.000	90.126	7276.00	1167.62	324.19	1157.55	0.00	
9324.00†	90.000	90.126	7276.00	1267.56	323.97	1257.55	0.00	
9424.00†	90.000	90.126	7276.00	1367.50	323.75	1357.55	0.00	
9524.00†	90.000	90.126	7276.00	1467.44	323.53	1457.55	0.00	
9624.00†	90.000	90.126	7276.00	1567.38	323.31	1557.55	0.00	
9724.00†	90.000	90.126	7276.00	1667.31	323.08	1657.55	0.00	
9824.00†	90.000	90.126	7276.00	1767.25	322.86	1757.55	0.00	
9924.00†	90.000	90.126	7276.00	1867.19	322.64	1857.55	0.00	
10024.00†	90.000	90.126	7276.00	1967.13	322.42	1957.55	0.00	
10124.00†	90.000	90.126	7276.00	2067.07	322.20	2057.55	0.00	
10224.00†	90.000	90.126	7276.00	2167.00	321.98	2157.55	0.00	
10324.00†	90.000	90.126	7276.00	2266.94	321.76	2257.55	0.00	
10424.00†	90.000	90.126	7276.00	2366.88	321.54	2357.55	0.00	
10524.00†	90.000	90.126	7276.00	2466.82	321.32	2457.55	0.00	
10624.00†	90.000	90.126	7276.00	2566.75	321.10	2557.55	0.00	
10724.00†	90.000	90.126	7276.00	2666.69	320.88	2657.55	0.00	
10824.00†	90.000	90.126	7276.00	2766.63	320.66	2757.55	0.00	
10924.00†	90.000	90.126	7276.00	2866.57	320.44	2857.55	0.00	
11024.00†	90.000	90.126	7276.00	2966.51	320.21	2957.55	0.00	
11124.00†	90.000	90.126	7276.00	3066.44	319.99	3057.55	0.00	
11224.00†	90.000	90.126	7276.00	3166.38	319.77	3157.55	0.00	
11324.00†	90.000	90.126	7276.00	3266.32	319.55	3257.55	0.00	
11424.00†	90.000	90.126	7276.00	3366.26	319.33	3357.55	0.00	



Planned Wellpath Report

VARRA #5 (REV-A.0) PWP

Page 6 of 8



REFERENCE WELLPATH IDENTIFICATION

Operator	EXTRACTION OIL & GAS	Slot	SLOT#05 VARRA #5(1641'FSL & 789'FWL,SEC.05)
Area	COLORADO	Well	VARRA #5
Field	WELD COUNTY (NAD83/TRUE NORTH)	Wellbore	VARRA #5 PWB
Facility	SEC.05-T06N-R67W		

WELLPATH DATA (180 stations) † = interpolated/extrapolated station

MD [ft]	Inclination [°]	Azimuth [°]	TVD [ft]	Vert Sect [ft]	North [ft]	East [ft]	DLS [°/100ft]	Comments
11524.00†	90.000	90.126	7276.00	3466.20	319.11	3457.55	0.00	
11624.00†	90.000	90.126	7276.00	3566.13	318.89	3557.55	0.00	
11724.00†	90.000	90.126	7276.00	3666.07	318.67	3657.55	0.00	
11824.00†	90.000	90.126	7276.00	3766.01	318.45	3757.55	0.00	
11924.00†	90.000	90.126	7276.00	3865.95	318.23	3857.55	0.00	
12024.00†	90.000	90.126	7276.00	3965.89	318.01	3957.54	0.00	
12124.00†	90.000	90.126	7276.00	4065.82	317.79	4057.54	0.00	
12224.00†	90.000	90.126	7276.00	4165.76	317.57	4157.54	0.00	
12324.00†	90.000	90.126	7276.00	4265.70	317.34	4257.54	0.00	
12424.00†	90.000	90.126	7276.00	4365.64	317.12	4357.54	0.00	
12524.00†	90.000	90.126	7276.00	4465.58	316.90	4457.54	0.00	
12624.00†	90.000	90.126	7276.00	4565.51	316.68	4557.54	0.00	
12724.00†	90.000	90.126	7276.00	4665.45	316.46	4657.54	0.00	
12824.00†	90.000	90.126	7276.00	4765.39	316.24	4757.54	0.00	
12924.00†	90.000	90.126	7276.00	4865.33	316.02	4857.54	0.00	
13024.00†	90.000	90.126	7276.00	4965.27	315.80	4957.54	0.00	
13124.00†	90.000	90.126	7276.00	5065.20	315.58	5057.54	0.00	
13224.00†	90.000	90.126	7276.00	5165.14	315.36	5157.54	0.00	
13324.00†	90.000	90.126	7276.00	5265.08	315.14	5257.54	0.00	
13424.00†	90.000	90.126	7276.00	5365.02	314.92	5357.54	0.00	
13524.00†	90.000	90.126	7276.00	5464.96	314.70	5457.54	0.00	
13624.00†	90.000	90.126	7276.00	5564.89	314.47	5557.54	0.00	
13724.00†	90.000	90.126	7276.00	5664.83	314.25	5657.54	0.00	
13824.00†	90.000	90.126	7276.00	5764.77	314.03	5757.54	0.00	
13924.00†	90.000	90.126	7276.00	5864.71	313.81	5857.54	0.00	
14024.00†	90.000	90.126	7276.00	5964.65	313.59	5957.54	0.00	
14124.00†	90.000	90.126	7276.00	6064.58	313.37	6057.54	0.00	
14224.00†	90.000	90.126	7276.00	6164.52	313.15	6157.54	0.00	
14324.00†	90.000	90.126	7276.00	6264.46	312.93	6257.54	0.00	
14424.00†	90.000	90.126	7276.00	6364.40	312.71	6357.54	0.00	



Planned Wellpath Report

VARRA #5 (REV-A.0) PWP

Page 7 of 8



REFERENCE WELLPATH IDENTIFICATION

Operator	EXTRACTION OIL & GAS	Slot	SLOT#05 VARRA #5(1641'FSL & 789'FWL,SEC.05)
Area	COLORADO	Well	VARRA #5
Field	WELD COUNTY (NAD83/TRUE NORTH)	Wellbore	VARRA #5 PWB
Facility	SEC.05-T06N-R67W		

WELLPATH DATA (180 stations) † = interpolated/extrapolated station

MD [ft]	Inclination [°]	Azimuth [°]	TVD [ft]	Vert Sect [ft]	North [ft]	East [ft]	DLS [°/100ft]	Comments
14524.00†	90.000	90.126	7276.00	6464.34	312.49	6457.54	0.00	
14624.00†	90.000	90.126	7276.00	6564.27	312.27	6557.54	0.00	
14724.00†	90.000	90.126	7276.00	6664.21	312.05	6657.54	0.00	
14824.00†	90.000	90.126	7276.00	6764.15	311.83	6757.54	0.00	
14924.00†	90.000	90.126	7276.00	6864.09	311.60	6857.54	0.00	
15024.00†	90.000	90.126	7276.00	6964.02	311.38	6957.54	0.00	
15124.00†	90.000	90.126	7276.00	7063.96	311.16	7057.54	0.00	
15224.00†	90.000	90.126	7276.00	7163.90	310.94	7157.54	0.00	
15324.00†	90.000	90.126	7276.00	7263.84	310.72	7257.54	0.00	
15424.00†	90.000	90.126	7276.00	7363.78	310.50	7357.54	0.00	
15524.00†	90.000	90.126	7276.00	7463.71	310.28	7457.54	0.00	
15624.00†	90.000	90.126	7276.00	7563.65	310.06	7557.54	0.00	
15724.00†	90.000	90.126	7276.00	7663.59	309.84	7657.54	0.00	
15824.00†	90.000	90.126	7276.00	7763.53	309.62	7757.54	0.00	
15924.00†	90.000	90.126	7276.00	7863.47	309.40	7857.54	0.00	
16024.00†	90.000	90.126	7276.00	7963.40	309.18	7957.54	0.00	
16124.00†	90.000	90.126	7276.00	8063.34	308.95	8057.53	0.00	
16224.00†	90.000	90.126	7276.00	8163.28	308.73	8157.53	0.00	
16324.00†	90.000	90.126	7276.00	8263.22	308.51	8257.53	0.00	
16424.00†	90.000	90.126	7276.00	8363.16	308.29	8357.53	0.00	
16524.00†	90.000	90.126	7276.00	8463.09	308.07	8457.53	0.00	
16624.00†	90.000	90.126	7276.00	8563.03	307.85	8557.53	0.00	
16724.00†	90.000	90.126	7276.00	8662.97	307.63	8657.53	0.00	
16824.00†	90.000	90.126	7276.00	8762.91	307.41	8757.53	0.00	
16924.00†	90.000	90.126	7276.00	8862.85	307.19	8857.53	0.00	
17024.00†	90.000	90.126	7276.00	8962.78	306.97	8957.53	0.00	
17124.00†	90.000	90.126	7276.00	9062.72	306.75	9057.53	0.00	
17224.00†	90.000	90.126	7276.00	9162.66	306.53	9157.53	0.00	
17324.00†	90.000	90.126	7276.00	9262.60	306.31	9257.53	0.00	
17338.39	90.000	90.126	7276.00 ²	9276.98	306.27	9271.92	0.00	End of Tangent



Planned Wellpath Report

VARRA #5 (REV-A.0) PWP

Page 8 of 8



REFERENCE WELLPATH IDENTIFICATION

Operator	EXTRACTION OIL & GAS	Slot	SLOT#05 VARRA #5(1641'FSL & 789'FWL,SEC.05)
Area	COLORADO	Well	VARRA #5
Field	WELD COUNTY (NAD83/TRUE NORTH)	Wellbore	VARRA #5 PWB
Facility	SEC.05-T06N-R67W		

HOLE & CASING SECTIONS - Ref Wellbore: VARRA #5 PWB Ref Wellpath: VARRA #5 (REV-A.0) PWP

String/Diameter	Start MD [ft]	End MD [ft]	Interval [ft]	Start TVD [ft]	End TVD [ft]	Start N/S [ft]	Start E/W [ft]	End N/S [ft]	End E/W [ft]
7in Casing Intermediate	24.00	7731.11	7707.11	24.00	7276.00	0.00	0.00	327.48	-335.33

TARGETS

Name	MD [ft]	TVD [ft]	North [ft]	East [ft]	Grid East [US ft]	Grid North [US ft]	Latitude	Longitude	Shape
VARRA PAD SECTION 04		0.00	103.79	0.83	3160186.77	1430380.18	40°30'48.118"N	104°55'25.957"W	polygon
VARRA PAD SECTION 05		0.00	103.79	0.83	3160186.77	1430380.18	40°30'48.118"N	104°55'25.957"W	polygon
2) VARRA #5 BHL ON PLAT REV-1(1790'FSL & 460'FEL,SEC.04)	17338.39	7276.00	306.27	9271.92	3169456.03	1430642.88	40°30'50.101"N	104°53'25.922"W	point
1) VARRA #5 LANDING POINT	7731.11	7276.00	327.48	-335.33	3159849.17	1430601.68	40°30'50.328"N	104°55'30.310"W	point
VARRA PAD SOUTH 1/2 HARDLINES(460'SETBACKS)		7420.00	103.79	0.83	3160186.77	1430380.18	40°30'48.118"N	104°55'25.957"W	polygon

SURVEY PROGRAM - Ref Wellbore: VARRA #5 PWB Ref Wellpath: VARRA #5 (REV-A.0) PWP

Start MD [ft]	End MD [ft]	Positional Uncertainty Model	Log Name/Comment	Wellbore
24.00	18000.00	NaviTrak (Standard)		VARRA #5 PWB