

T9N, R79W, 6th P.M.

Bonanza Creek Energy

Well location, NMU #11-12H. (SURFACE LOCATION) located as shown in the NW1/4NE1/4 of Section 11, T9N, R79W, 6th P.M., Jackson County, Colorado.

BASIS OF BEARINGS

BASIS OF BEARINGS IS TRUE NORTH USING GPS

BASIS OF ELEVATION

SPOT ELEVATION AT THE NE CORNER OF SECTION 11, T9N, R79W, 6TH PM, TAKEN FROM THE EAGLE HILL QUADRANGLE, USGS 7.5 MIN QUAD (TOPOGRAPHIC MAP) WITH SAID ELEVATION MARKED AS BEING 8227 FEET.

SURFACE USE: GRAZING

VEGETATION IS MAINLY SAGE-BRUSH AND NATIVE GRASSES

GRAPHIC SCALE 1"=1000'



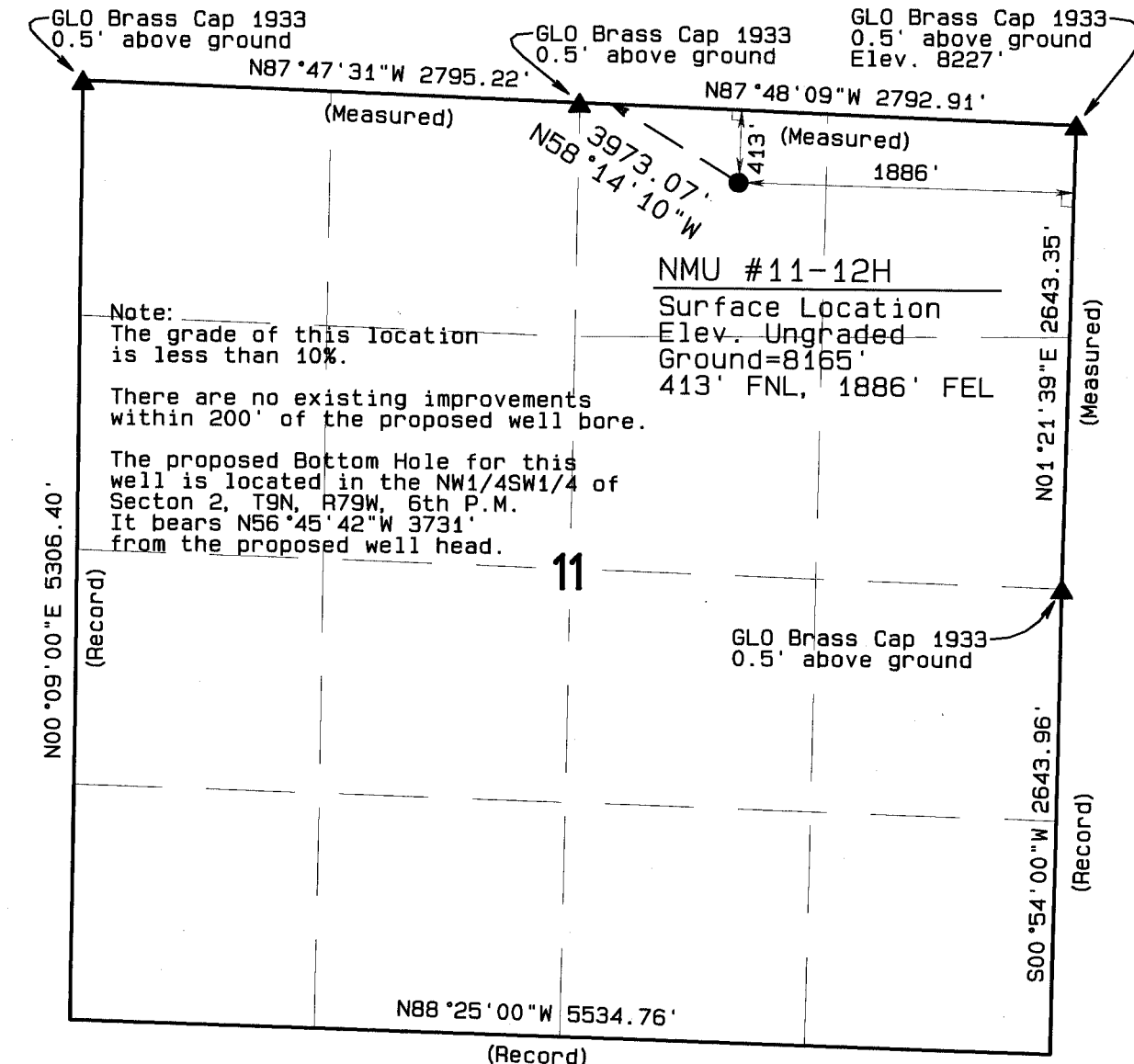
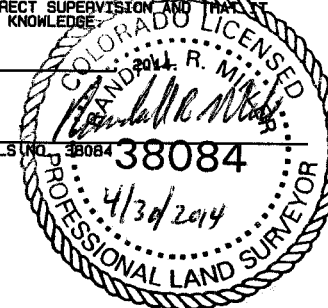
1000 0 1000



I RANDALL R. MILLER, BEING A REGISTERED LAND SURVEYOR IN THE STATE OF COLORADO, DO HEREBY CERTIFY THAT THIS PLAN WAS MADE BY ME AND/OR UNDER MY DIRECT SUPERVISION AND THAT IT IS ACCURATE TO THE BEST OF MY KNOWLEDGE.

DATED THIS _____ DAY OF _____

RANDALL R. MILLER, COLORADO PLS NO. 38084 38084



LEGEND

90° SYMBOL
FOUND CORNER
PROPOSED WELL



NAD 83 (SURFACE LOCATION)

LATITUDE=40.771734°N
LONGITUDE=-106.229966°W

PDOP = 2.906

NORTH PARK ENGINEERING & CONSULTING, INC.

P.O. BOX 395
WALDEN, CO 80480
(970) 723-3725

DATE OF FIELD WORK: APR 25, 2014 DRAWING COMPLETION: APR 29, 2014

SURVEYED BY: RAS DRAWN BY: RRM CHECKED BY: RAS

SHEET 1 OF 2

JOB NO.: 13-030

T9N, R79W, 6th P.M.

Bonanza Creek Energy

Well location, NMU #11-12H (TARGET BOTTOM HOLE), located as shown in the NW1/4SW1/4 of Section 2, T9N, R79W, 6th P.M., Jackson County, Colorado.

BASIS OF BEARINGS

BASIS OF BEARINGS IS TRUE NORTH USING GPS

BASIS OF ELEVATION

SPOT ELEVATION AT THE NE CORNER OF SECTION 11, T9N, R79W, 6TH PM, TAKEN FROM THE EAGLE HILL QUADRANGLE, USGS 7.5 MIN QUAD (TOPOGRAPHIC MAP) WITH SAID ELEVATION MARKED AS BEING 8227 FEET.

SURFACE USE: GRAZING

VEGETATION IS MAINLY SAGE-BRUSH AND NATIVE GRASSES

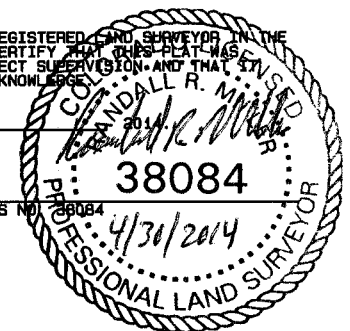
GRAPHIC SCALE 1"=1000'

1000 0 1000

I RANDALL R. MILLER, BEING A REGISTERED LAND SURVEYOR IN THE STATE OF COLORADO, DO HEREBY CERTIFY THAT THIS PLAT WAS MADE BY ME AND/OR UNDER MY DIRECT SUPERVISION AND THAT IT IS ACCURATE TO THE BEST OF MY KNOWLEDGE.

DATED THIS _____ DAY OF _____

RANDALL R. MILLER, COLORADO PLS NO. 38084



NAD 83 (TARGET BOTTOM HOLE)

LATITUDE=40.777397°N
LONGITUDE=106.242225°W

NORTH PARK ENGINEERING & CONSULTING, INC.

P.O. BOX 395
WALDEN, CO 80480
(970) 723-3725

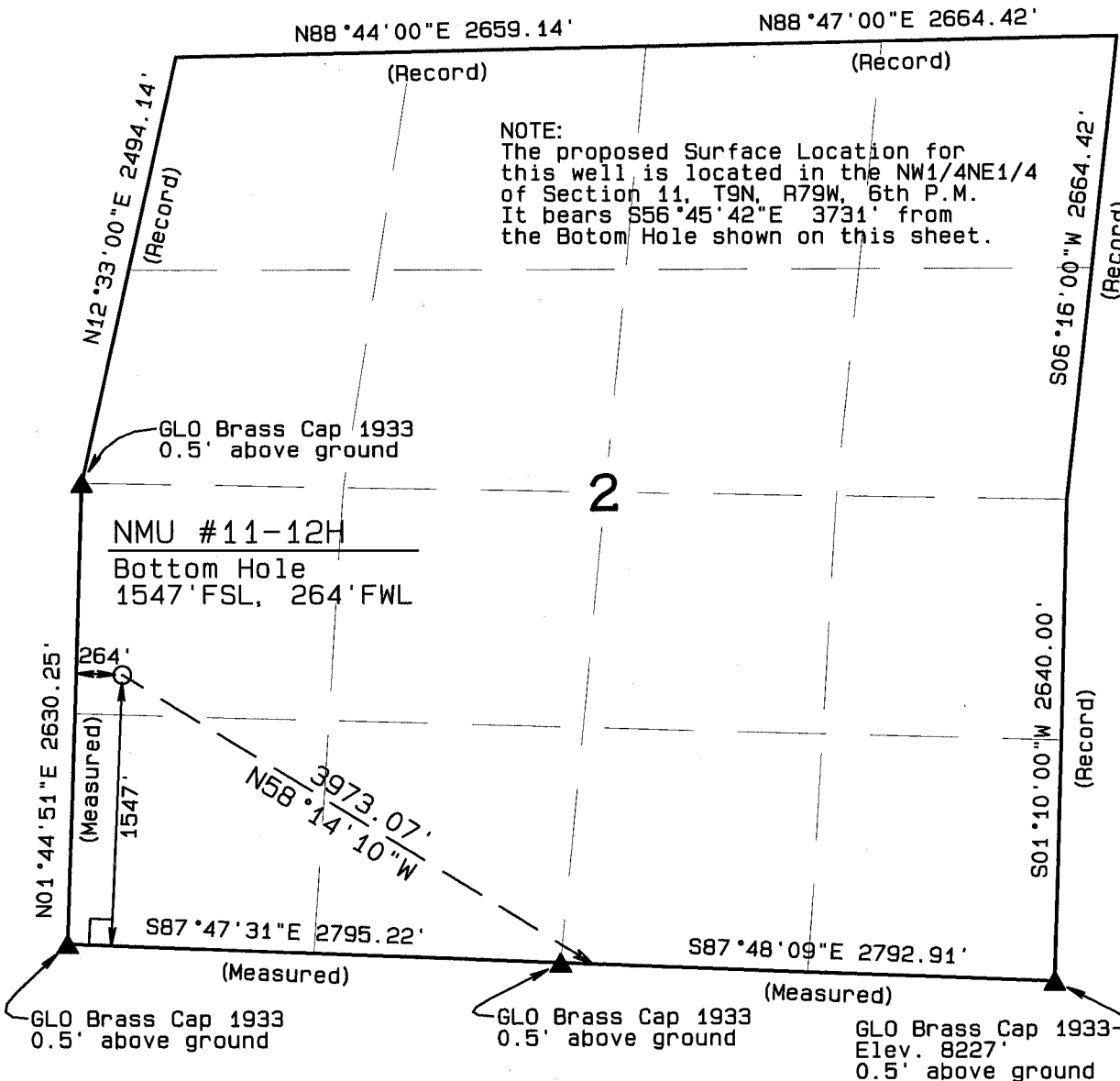
DATE OF FIELD WORK: APR 25, 2014 DRAWING COMPLETION: APR 29, 2014

SURVEYED BY: RAS DRAWN BY: RRM CHECKED BY: RAS

SHEET 2 OF 2

JOB NO.: 13-030

NOTE:
The proposed Surface Location for this well is located in the NW1/4NE1/4 of Section 11, T9N, R79W, 6th P.M. It bears S56°45'42"E 3731' from the Bottom Hole shown on this sheet.



LEGEND

90° SYMBOL
FOUND CORNER
PROPOSED BHL

L
▲
○