

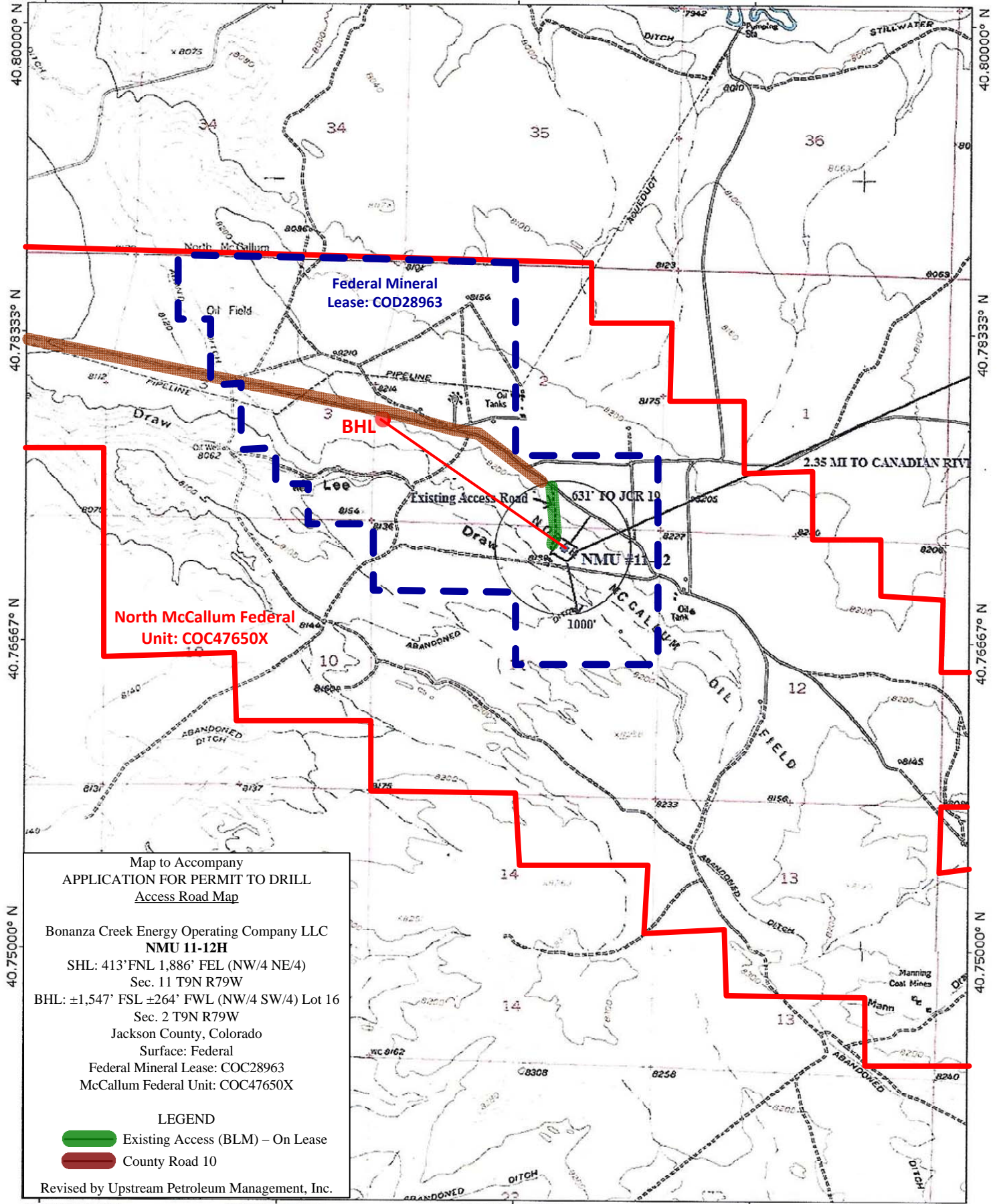
VICINITY MAP for NMU #11-12

106.26667° W

106.25000° W

106.23333° W

WGS84 106.21667° W



TN 10°

106.26667° W

106.25000° W

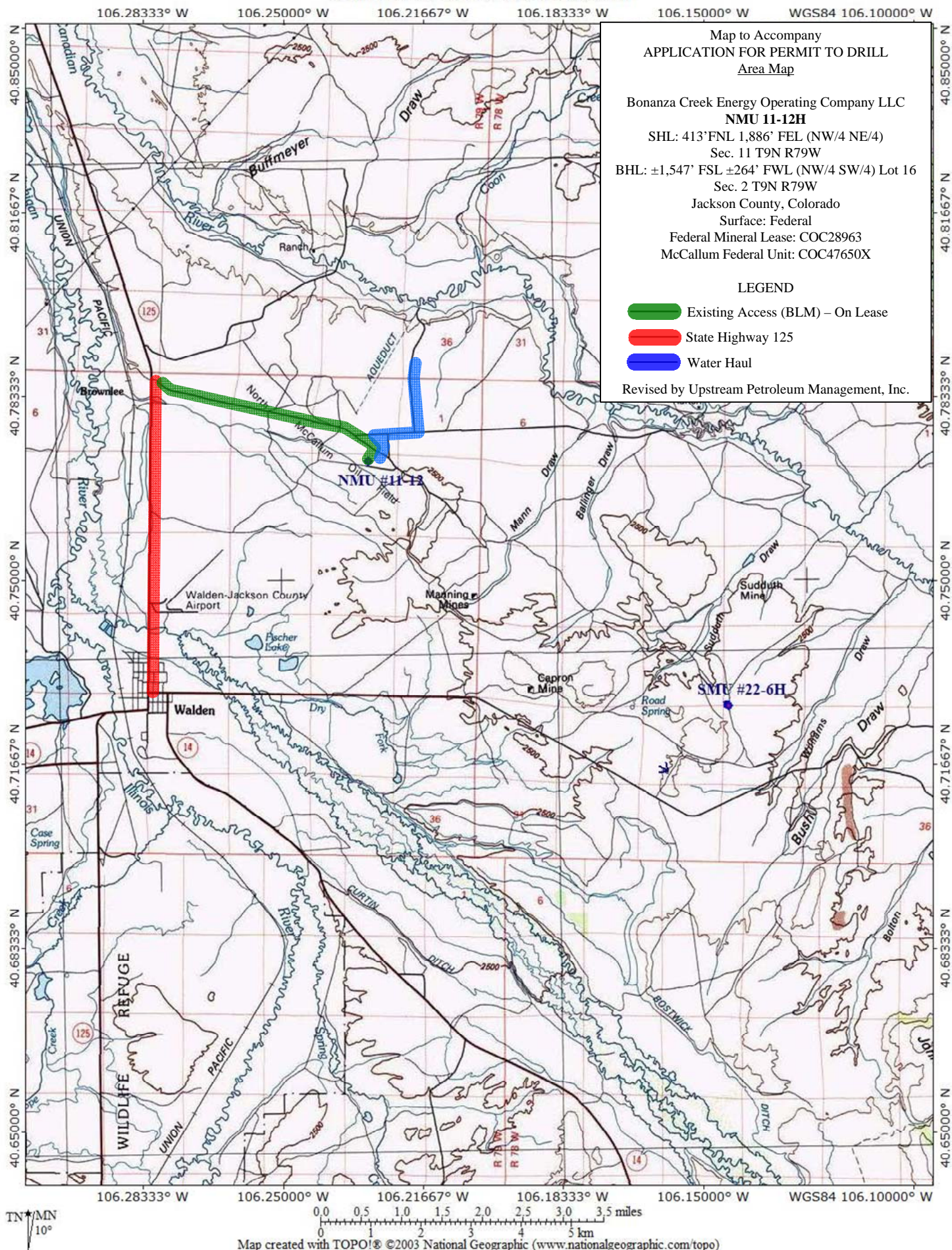
106.23333° W

WGS84 106.21667° W

0 1000 FEET 0 500 1000 METERS

Map created with TOPO! © 2003 National Geographic (www.nationalgeographic.com/topo)

VICINITY MAP for NMU #11-12 and SMU #22-6H



Map to Accompany
APPLICATION FOR PERMIT TO DRILL
Area Map

Bonanza Creek Energy Operating Company LLC

NMU 11-12H

SHL: 413' FNL 1,886' FEL (NW/4 NE/4)

Sec. 11 T9N R79W

BHL: ±1,547' FSL ±264' FWL (NW/4 SW/4) Lot 16

Sec. 2 T9N R79W

Jackson County, Colorado

Surface: Federal

Federal Mineral Lease: COC28963

McCallum Federal Unit: COC47650X

LEGEND

— Existing Access (BLM) - On Lease

— State Highway 125

— Water Haul

Revised by Upstream Petroleum Management, Inc.