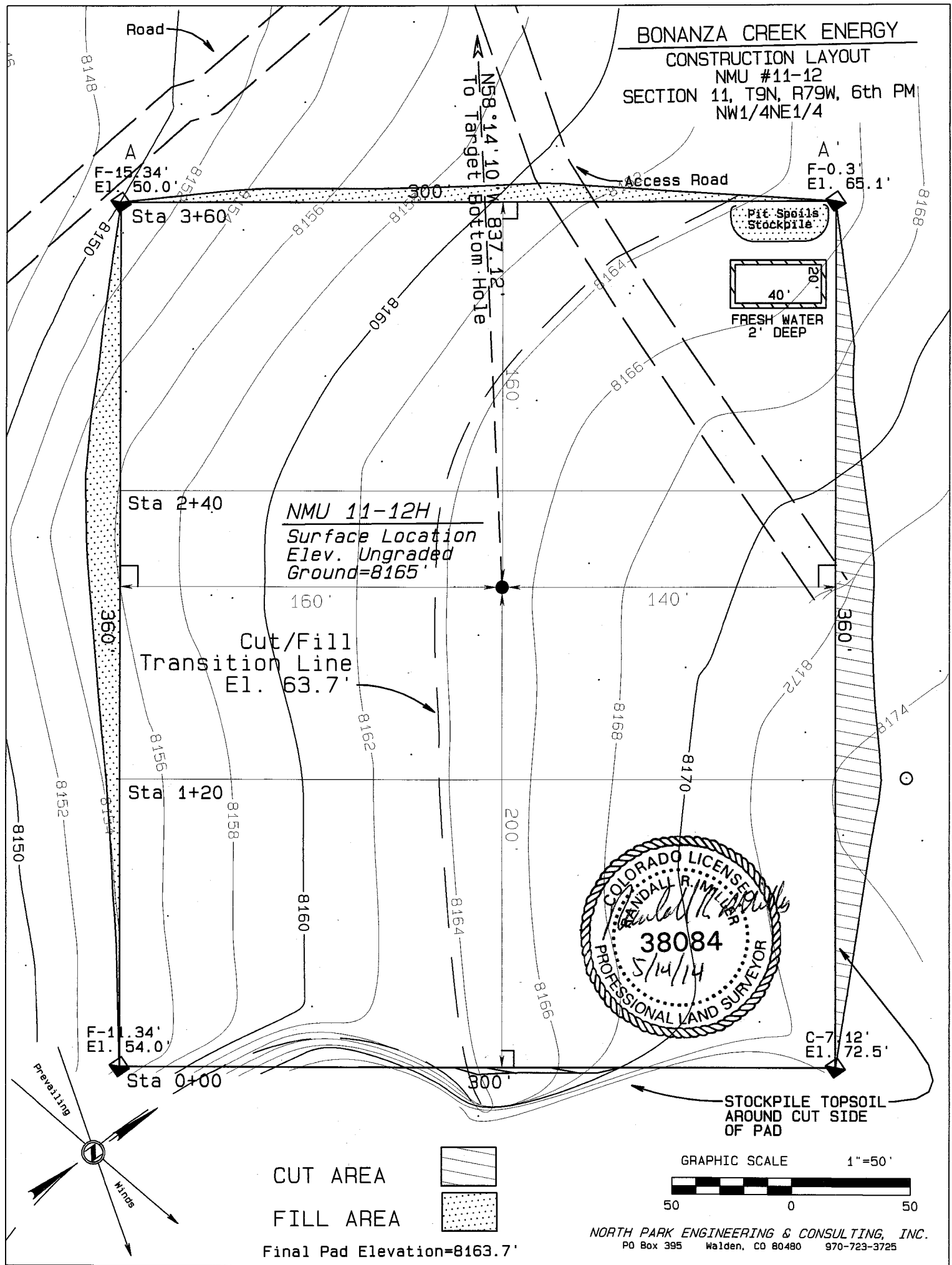


BONANZA CREEK ENERGY

CONSTRUCTION LAYOUT

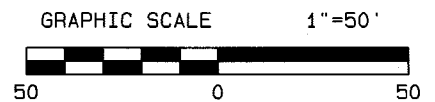
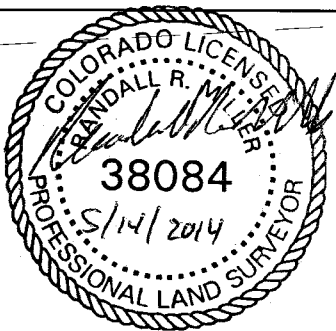
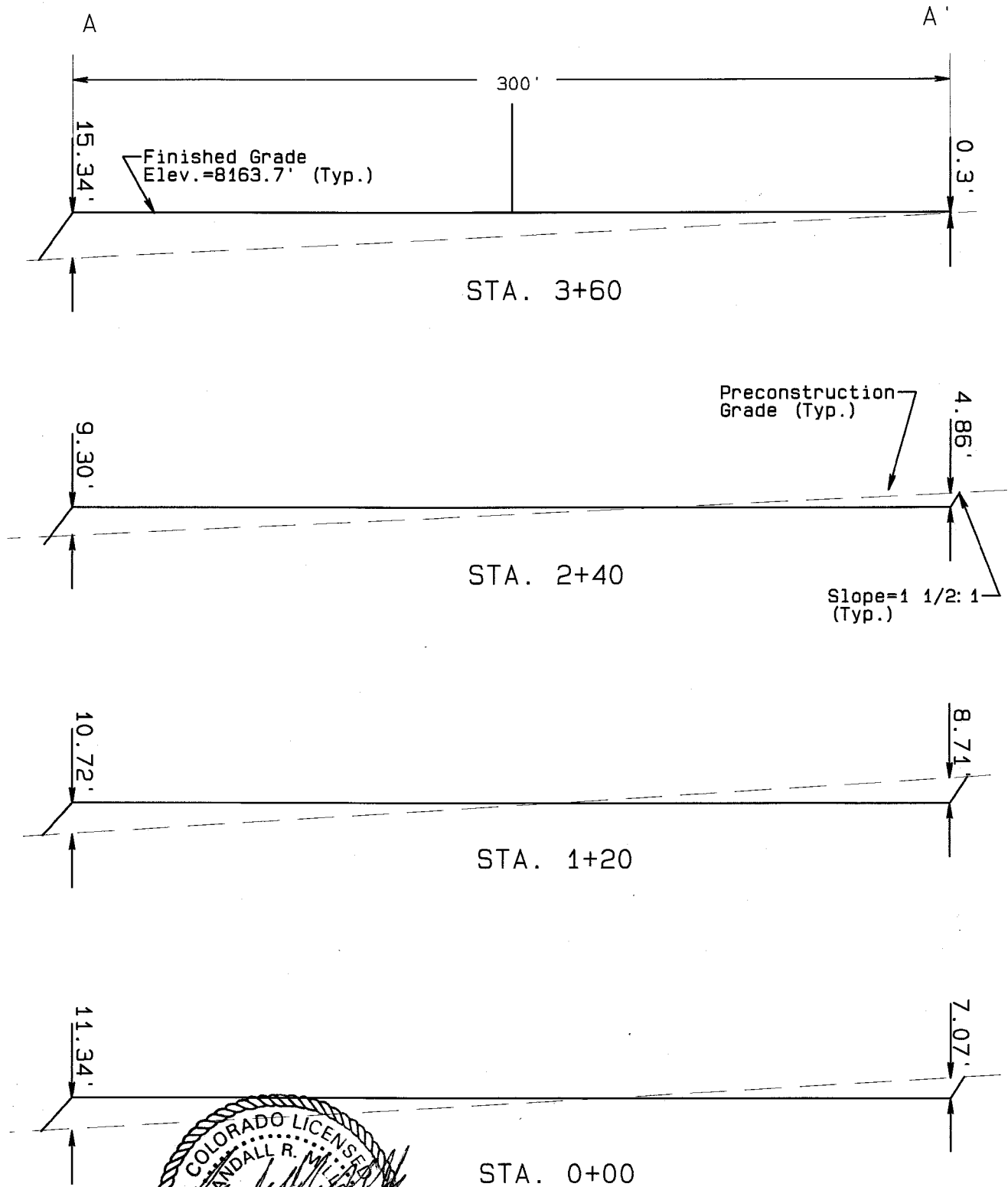
NMU #11-12

SECTION 11, T9N, R79W, 6th PM
NW1/4NE1/4



CONSTRUCTION LAYOUT CROSS SECTION

NMU #11-12
SECTION 11, T9N, R79W, 6th PM
NW1/4NE1/4



NORTH PARK ENGINEERING & CONSULTING, INC.
PO Box 395 Walden, CO 80480 970-723-3725

NMU 11-12H

Wellsite Layout

