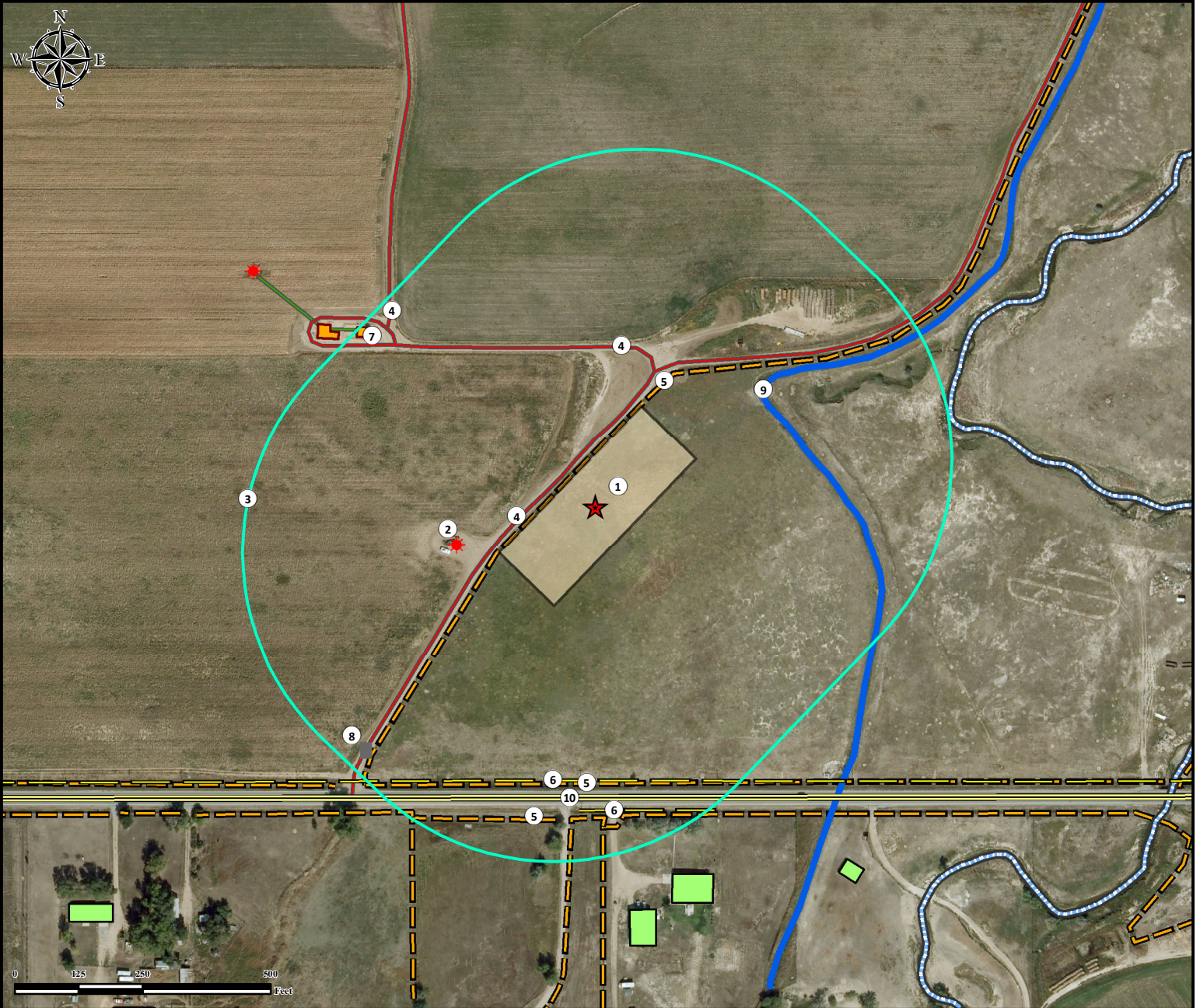


Location Drawing

SACK 3N-30 FACILITY

LOT 1 SW¼ SECTION 31, TOWNSHIP 1 NORTH, RANGE 67 WEST OF THE 6TH PRINCIPAL MERIDIAN



- | | |
|---|---|
| 1. Proposed Facility 3N-30 | 6. Powerlines are ±533' S, and ±596' S. |
| 2. Existing Well ALBERT SACK 14-31 is ±281' SW. | 7. Existing Facility is ±544' NW. |
| 3. 500' Radius. | 8. Cattle Guard is ±651' SW. |
| 4. Private Roads are ±88' NW, ±287' NE, and ±535' NW. | 9. Canal is ±419' NE. |
| 5. Fences are ±73' NW, ±546' S, and ±611' S. | 10. 168th Avenue is ±570' S. |

Legend	
	Existing Well
	Gate/Cattle Guard
	500' Radius
	Proposed Facility
	Facility Enclosure
	Public Road
	Ditch
	Stream
	Powerline
	Fence
	Pipeline
	Private Road

Reference Location
** All measurements are made from Reference Point **
Lat: 40.001904° Long:-104.934315° (NAD83)
Elevation: 5054 Feet
Surface Use: Dry Land Pasture

Use our resources to find yours!
www.petro-fs.com
 (303) 928-7128

Field Date: 08/01/2013
 Drafting Date: 11/14/2013
 Drafter: PAH
 Revision:

FSL: 569' FWL: 2304'
 Data Sources:
 - Aerial courtesy of Anadarko Petroleum Corporation (2010)

Prepared for: KERR-MCGEE OIL & GAS ONSHORE LP