

**ANADARKO PETROLEUM CORP - EBUS
DO NOT MAIL - PO BOX 4995
THE WOODLANDS, Texas**

Grenemyer 15N-3HZ

Majors 42

Post Job Summary **Cement Surface Casing**

Date Prepared: 1/24/2014
Version: 1

Service Supervisor: BONE, JEFFERSON

Submitted by: TRIER, DEREK

HALLIBURTON

HALLIBURTON

Wellbore Geometry

Job Tubulars					MD		Shoe Joint Length ft
Type	Description	Size in	ID in	Wt lbm/ft	Top ft	Bottom ft	
Casing	9 5/8" Surface Casing	9.63	8.921	36.00	0.00	1,085.00	45.00
Open Hole Section	13 1/2" Open Hole Section		13.500		0.00	1,095.00	0.00

HALLIBURTON

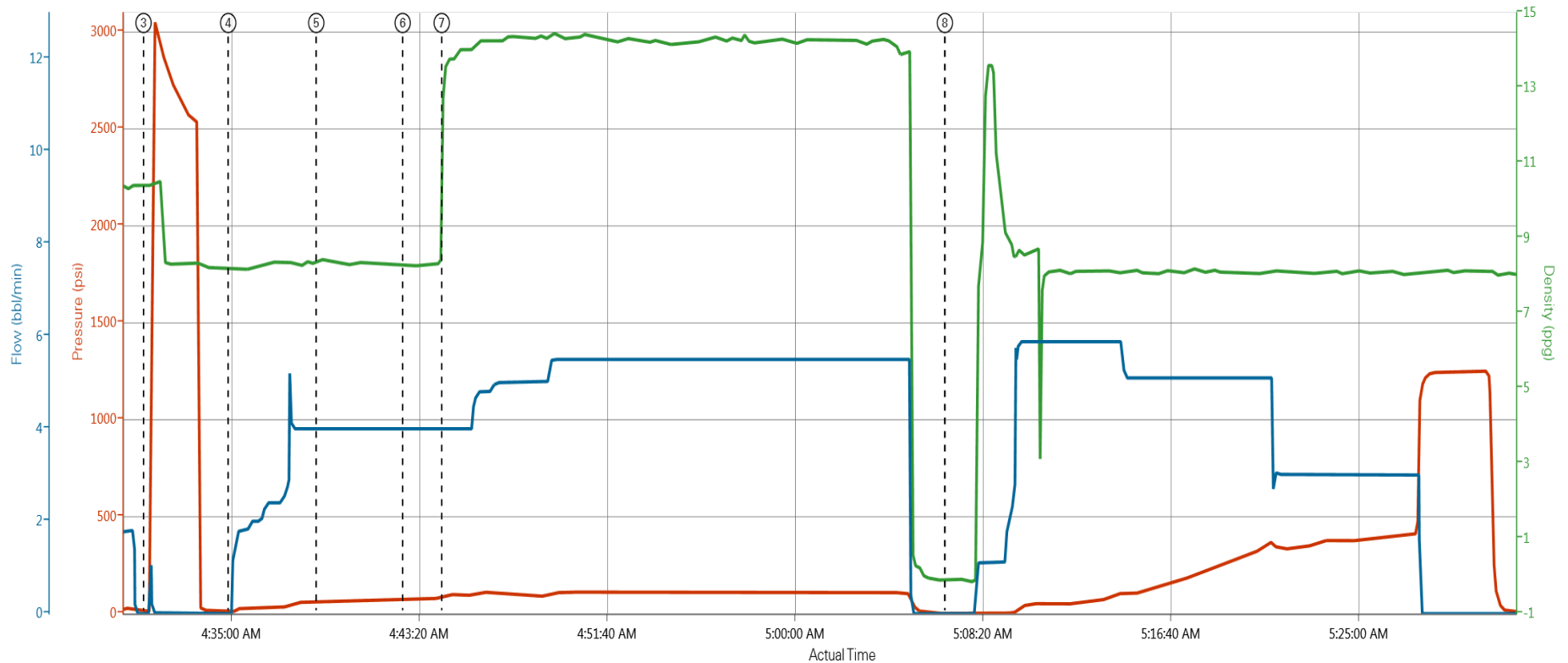
Pumping Schedule

Stage /Plug #	Fluid #	Fluid Type	Fluid Name	Surface Density lbm/gal	Avg Rate bbl/min	Surface Volume	Downhole Volume
1	1	Spacer	Fresh Water Spacer	8.33	4.00	10.0 bbl	10.0 bbl
1	2	Spacer	Mud Flush	8.40	4.00	12.0 bbl	12.0 bbl
1	1	Spacer	Fresh Water Spacer	8.33	4.00	10.0 bbl	10.0 bbl
1	3	Cement Slurry	SwiftCem B2	14.20	5.50	409.0 sacks	409.0 sacks

HALLIBURTON

Data Acquisition

ANADARKO, GRENEMYER 15N-3HZ, SURFACE JOB SUMMARY



Truck 1 Pr (psi) Truck 1 Dens (ppg) Truck 1 Slry Rt (bbl/min)

① Start Job 6;1.71;0 ④ Pump Spacer 1 10;8.18;0 ⑦ Pump Cement 88;13.57;4
 ② Test Lines 8;9.34;1.2 ⑤ Pump Spacer 2 61;8.37;4 ⑧ Pump Displacement 2;0.1;0
 ③ Test Lines 12;10.42;0 ⑥ Pump Spacer 1 74;8.33;4

HALLIBURTON

Service Supervisor Reports

Job Log

Date/Time	Chart #	Activity Code	Pump Rate	Cum Vol	Pump		Pressure (psig)		Comments
12/12/2013 22:30		Call Out							
12/13/2013 01:30		Safety Meeting - Departing Location							ROAD HAZARDS, ROUTE, CONVOY, FIT FOR DUTY
12/13/2013 02:00		Arrive at Location from Service Center							ARRIVED ON LOCATION, RIG WAS RUNNING CASING
12/13/2013 03:15		Safety Meeting - Pre Rig-Up							PINCH POINTS, LINE OF FIRE, LIFTING, OVERHEAD LOADS, RED ZONES
12/13/2013 03:30		Rig-Up Equipment							
12/13/2013 04:00		Rig-Up Completed							
12/13/2013 04:15		Safety Meeting - Pre Job							CONTINGENCIES, PRESSURE TESTING, MUSTER AREAS, STOP WORK AUTHORITY
12/13/2013 04:32		Start Job							
12/13/2013 04:32		Test Lines							PRESSURE TEST LINES TO 2500 PSI
12/13/2013 04:37		Pump Spacer 1	4	10				80.0	RIG WATER
12/13/2013 04:40		Pump Spacer 2	4	12				90.0	MUD FLUSH
12/13/2013 04:43		Pump Spacer 1	4	10				95.0	RIG WATER
12/13/2013 04:46		Pump Cement	5.5	112				90.0	409 SKS 14.2 PPG 1.54 Y 7.66 W MIXED WITH RIG WATER
12/13/2013 05:06		Shutdown							
12/13/2013 05:07		Drop Top Plug							
12/13/2013 05:09		Pump Displacement	5	80.5				400.0	RIG WATER, WASHED UP ON TOP OF PLUG WITH FIRST 10 BBLS, 13 BBLS OF CEMENT BACK TO SURFACE
12/13/2013 05:27		Bump Plug	3					550.0	
12/13/2013 05:29		Check Floats						1200.0	1 BBL BACK TO TRUCK
12/13/2013 05:45		Safety Meeting - Pre Rig-Down							LINE OF FIRE, PINCH POINTS, LIFTING, RED ZONES, OVERHEAD LOADS
12/13/2013 06:00		Rig-Down Equipment							
12/13/2013 06:30		Rig-Down Completed							
12/13/2013 06:45		Safety Meeting - Departing Location							ROUTE, CONVOY, FIT FOR DUTY, ROAD HAZARDS
12/13/2013 07:00		Depart Location for Service Center or Other Site							

The Road to Excellence Starts with Safety

Sold To #: 300466	Ship To #: 3204790	Quote #:	Sales Order #: 900961072
Customer: ANADARKO PETROLEUM CORP - EBUS		Customer Rep: Porter, Bob	
Well Name: Grenemyer		Well #: 15N-3HZ	API/UWI #: 05-123-38418
Field: WATTENBERG	City (SAP): IONE	County/Parish: Weld	State: Colorado
Lat: N 40.013 deg. OR N 40 deg. 0 min. 46.663 secs.		Long: W 104.878 deg. OR W -105 deg. 7 min. 19.243 secs.	
Contractor: Majors		Rig/Platform Name/Num: Majors 42	
Job Purpose: Cement Surface Casing			
Well Type: Development Well		Job Type: Cement Surface Casing	
Sales Person: PLIENESS, RYAN		Srvc Supervisor: BONE, JEFFERSON	MBU ID Emp #: 491216

Job Personnel

HES Emp Name	Exp Hrs	Emp #	HES Emp Name	Exp Hrs	Emp #	HES Emp Name	Exp Hrs	Emp #
BONE, JEFFERSON Eldon	0.0	491216	BUSHMAN, JOSH M	0.0	530613			

Equipment

HES Unit #	Distance-1 way	HES Unit #	Distance-1 way	HES Unit #	Distance-1 way	HES Unit #	Distance-1 way
10866493C	20 mile	11501021	20 mile	11645063	20 mile		

Job

Job Times

Formation Name				Date	Time	Time Zone
Formation Depth (MD)	Top	Bottom		Called Out	12 - Dec - 2013	22:30 MST
Form Type	BHST			On Location	13 - Dec - 2013	02:00 MST
Job depth MD	1095. ft	Job Depth TVD	1095. ft	Job Started	13 - Dec - 2013	04:32 MST
Water Depth	Wk Ht Above Floor			Job Completed	13 - Dec - 2013	05:29 MST
Perforation Depth (MD)	From	To		Departed Loc	13 - Dec - 2013	07:00 MST

Well Data

Description	New / Used	Max pressure psig	Size in	ID in	Weight lbm/ft	Thread	Grade	Top MD ft	Bottom MD ft	Top TVD ft	Bottom TVD ft
13 1/2" Open Hole Section				13.5				.	1095.		
9 5/8" Surface Casing	Unknown		9.625	8.921	36.		J-55	.	1085.		

Sales/Rental/3rd Party (HES)

Description	Qty	Qty uom	Depth	Supplier
CMT CASING EQUIPMENT BOM	1	JOB		
MILEAGE FOR CEMENTING CREW,ZI	20	MI		
ZI FUEL SURCHG-CARS/PICKUPS<1 1/2TON	20	MI		
KIT,HALL WELD-A	1	EA		
CNTRLZR, 9 5/8"x13 3/4',#500-0963-1375	7	EA		
Description	Qty	Qty uom	Depth	Supplier
BASKET - CEMENT - 9-5/8 CSG X 12-1/4	1	EA		
PLUG,CMTG,TOP,9 5/8,HWE,8.16 MIN/9.06 MA	1	EA		
COLLAR-STOP-9 5/8"-FRICTION-HINGED	2	EA		

Fluid Data

Stage/Plug #: 1									
Fluid #	Stage Type	Fluid Name	Qty	Qty uom	Mixing Density lbm/gal	Yield ft ³ /sk	Mix Fluid Gal/sk	Rate bbl/min	Total Mix Fluid Gal/sk
1	Fresh Water Spacer		10.00	bbl	8.33			4.0	
2	Mud Flush		12.00	bbl	8.4			4.0	
3.5 lbm/bbl		MUD FLUSH III, 40 LB SACK (101633304)							
42 gal/bbl		MUD FLUSH III - SBM (528788)							
1	Fresh Water Spacer		10.00	bbl	8.33			4.0	
3	SwiftCem B2	SWIFTCM (TM) SYSTEM (452990)	409.0	sacks	14.2	1.54	7.66	5.50	7.66
7.66 Gal		FRESH WATER							
Calculated Values		Pressures		Volumes					
Displacement	80.5	Shut In: Instant		Lost Returns		Cement Slurry		Pad	
Top Of Cement		5 Min		Cement Returns	13	Actual Displacement	80.5	Treatment	
Frac Gradient		15 Min		Spacers	32	Load and Breakdown		Total Job	
Rates									
Circulating		Mixing		Displacement	5.0	Avg. Job			
Cement Left In Pipe	Amount	45 ft	Reason	Shoe Joint					
Frac Ring # 1 @	ID	Frac ring # 2 @	ID	Frac Ring # 3 @	ID	Frac Ring # 4 @	ID		
The Information Stated Herein Is Correct				Customer Representative Signature					

