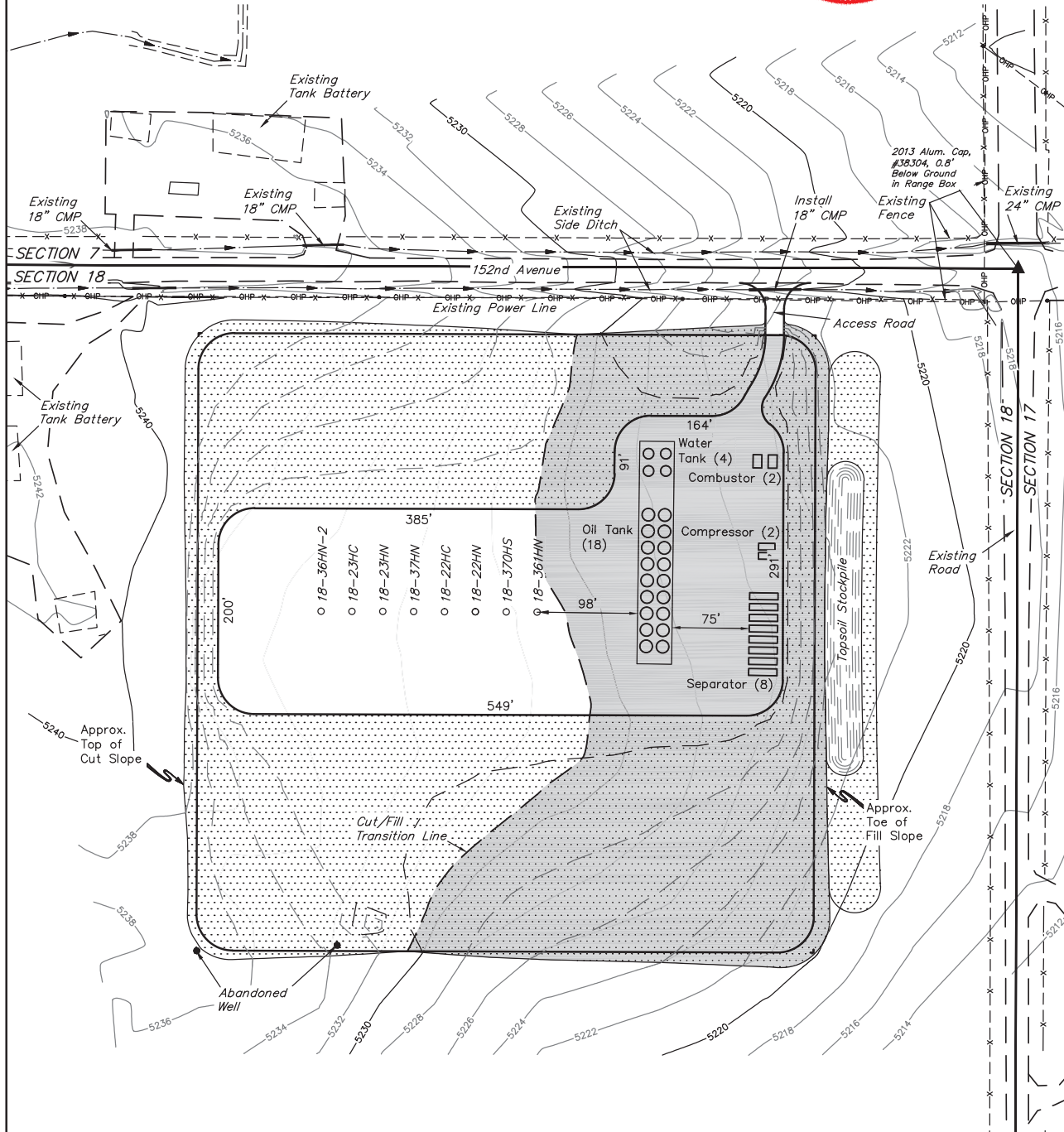


GREAT WESTERN OIL & GAS COMPANY
PRODUCTION FACILITY LAYOUT FOR
WILLOW BEND LD 18-36HN-2, 18-23HC, 18-23HN,
18-37HN, 18-22HC, 18-22HN, 18-370HS & 18-361HN
SECTION 18, T1S, R67W, 6th P.M.
NE 1/4 NE 1/4

FIGURE #4

SCALE: 1" = 100'
DATE: 11-25-13
DRAWN BY: J.W.
REVISED: 12-11-13
REVISED: 05-14-14



APPROXIMATE ACREAGE
UN-RECLAIMED = ± 3.124 ACRES
RECLAIMED = ± 6.294 ACRES
TOTAL = ± 9.418 ACRES

RECLAIMED AREA