

Houston, TX

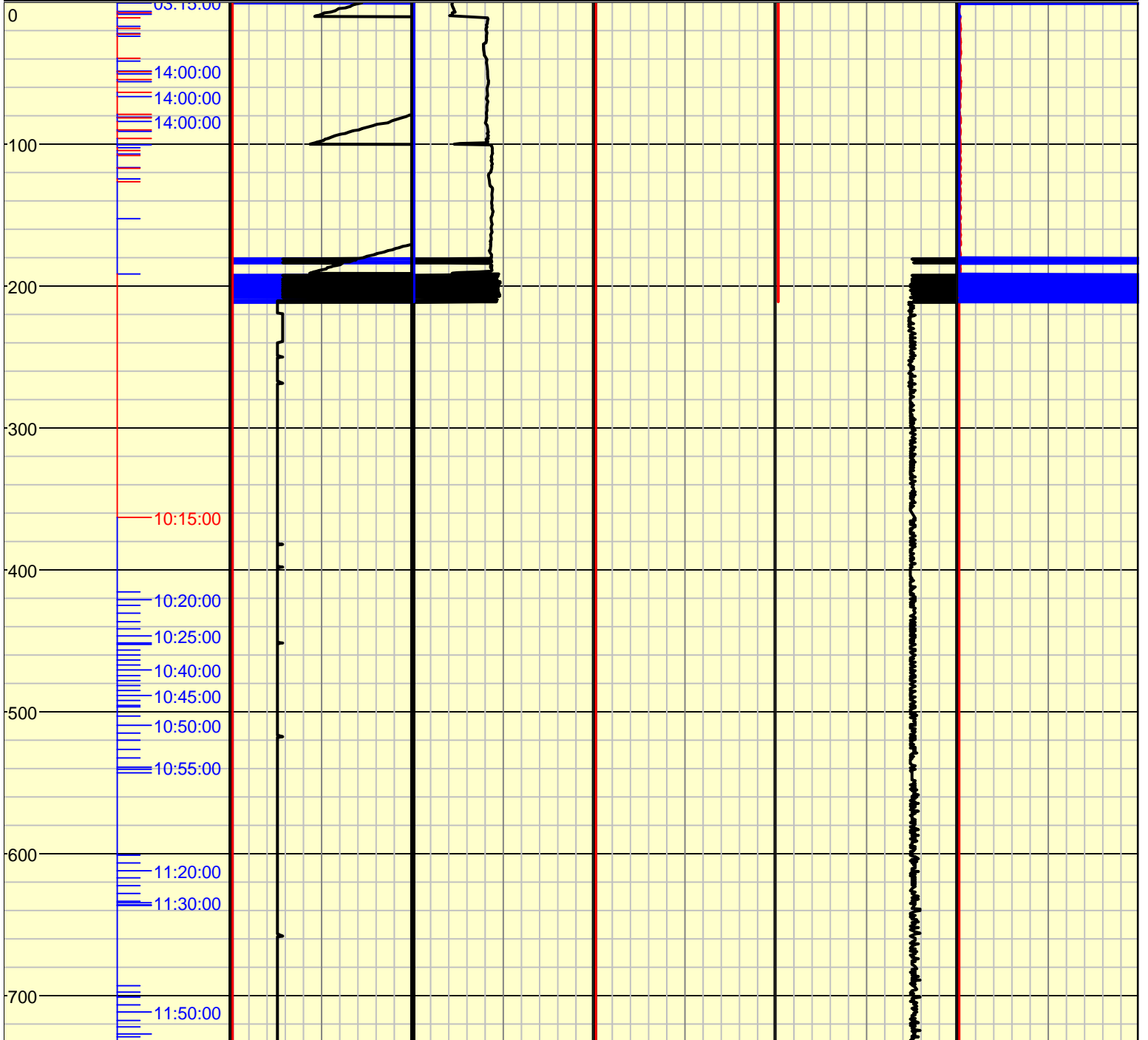
Main (281) 774-5600 / Support (866) 433-4345  
www.myWells.com

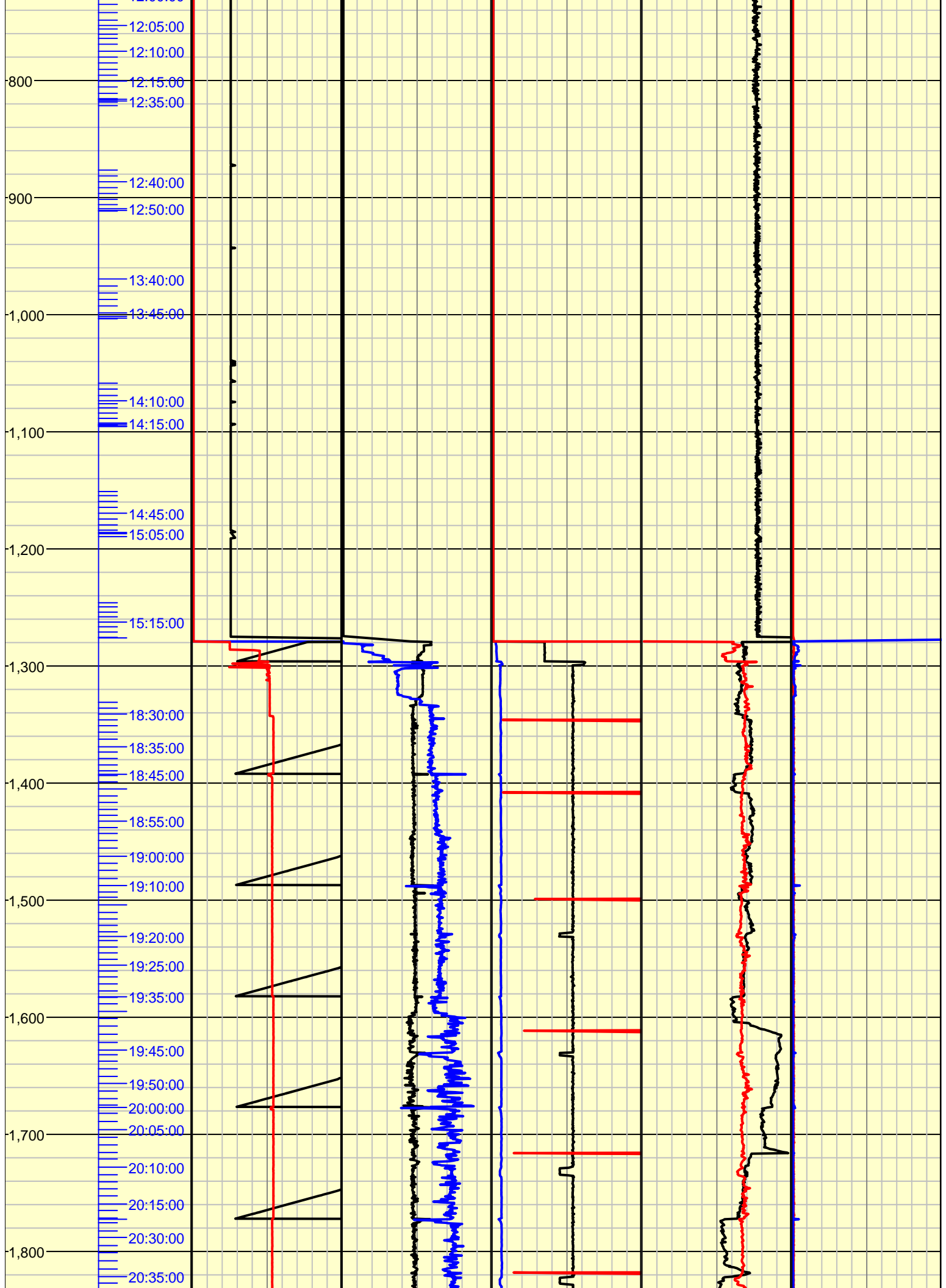
Operator ENCANA CORPORATION  
Well 00M15-HMU 6-12D  
Field J6SEB SCHIEDLER  
State COLORADO  
County GARFIELD  
Rig Number M15  
Spud Date 2013-08-13  
API Number  
Contractor NABORS DRILLING USA, LP

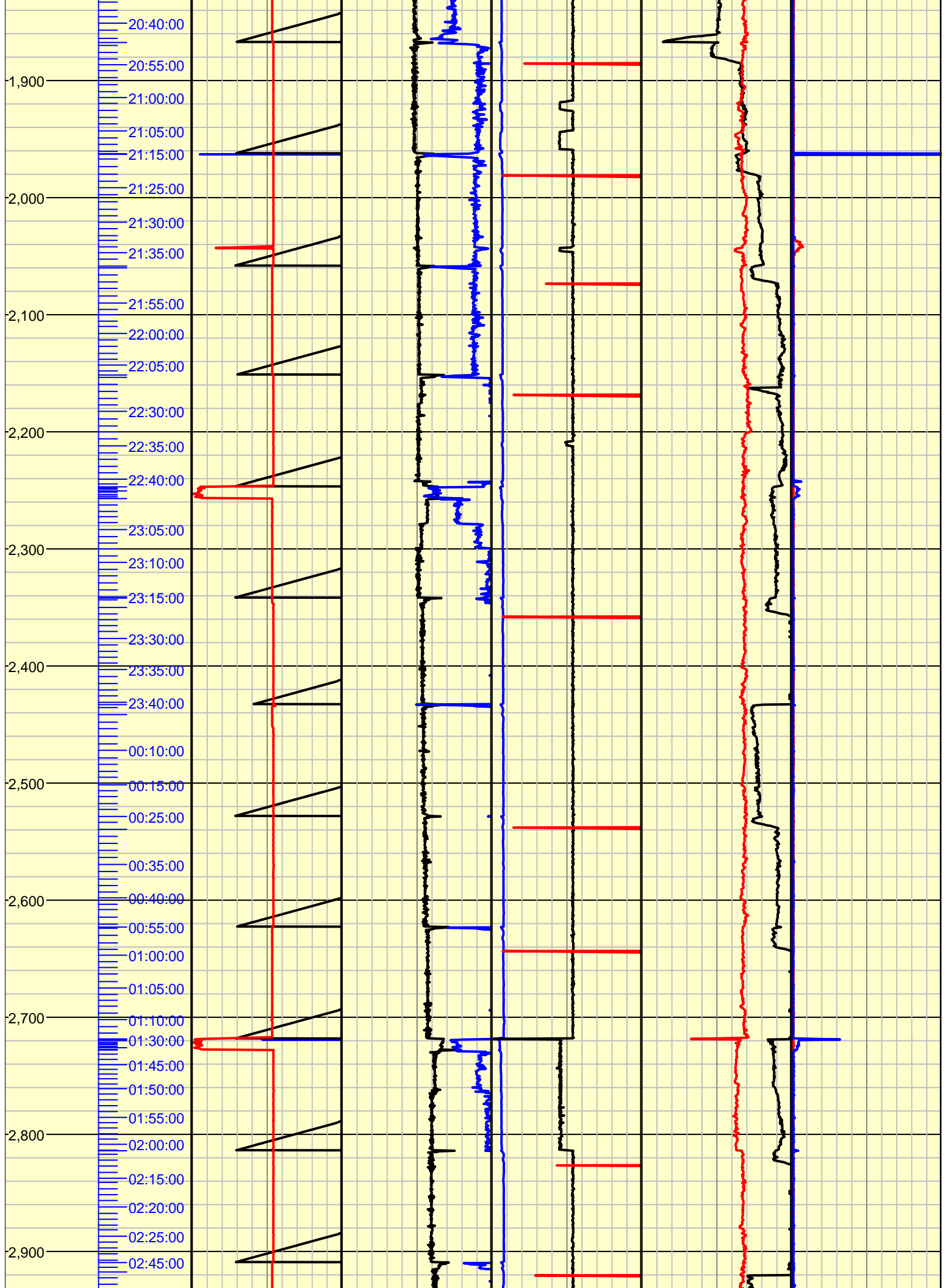
DEPTHS: 0 TO 9,005

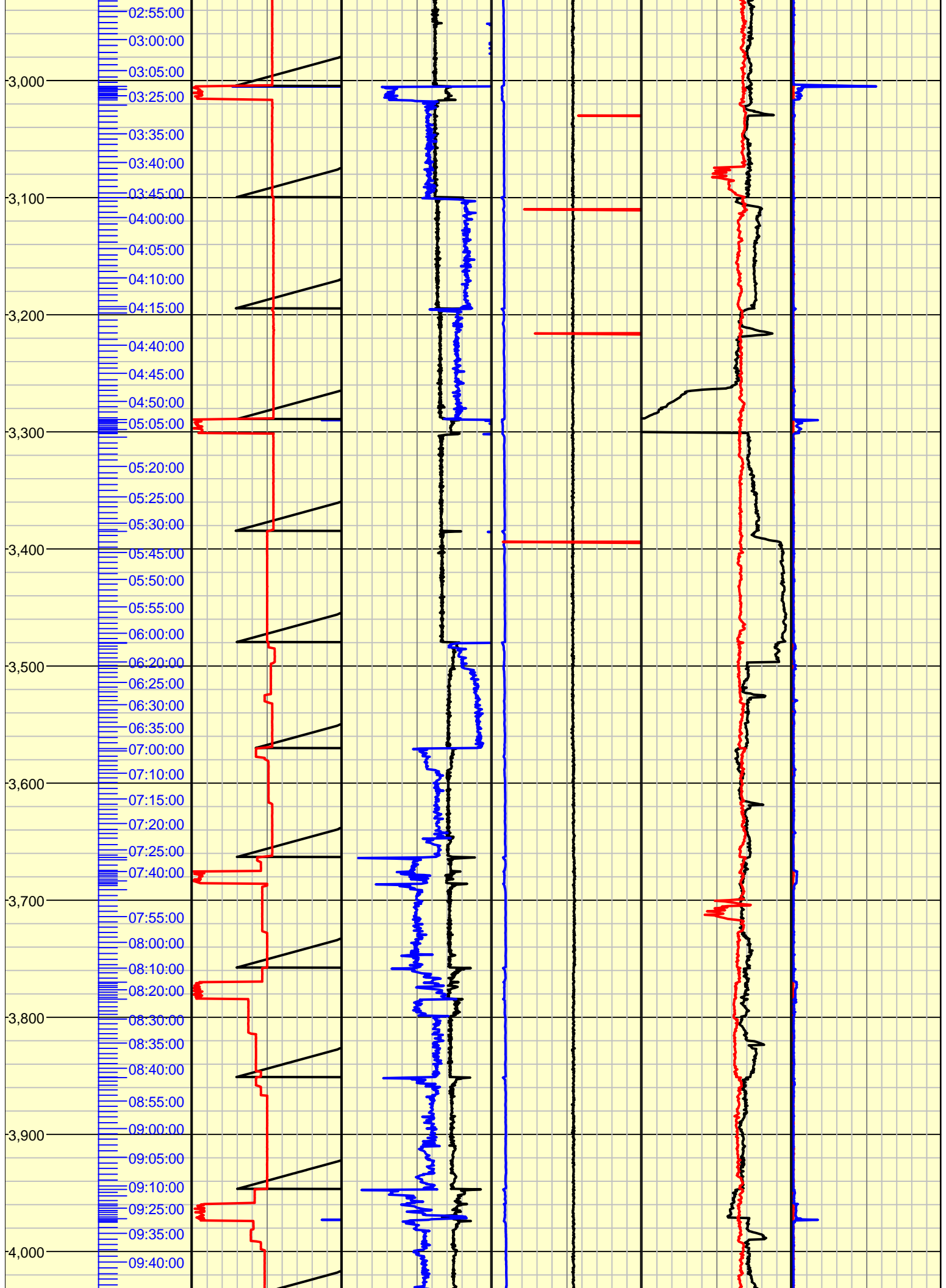
SCALE: 1"=100'

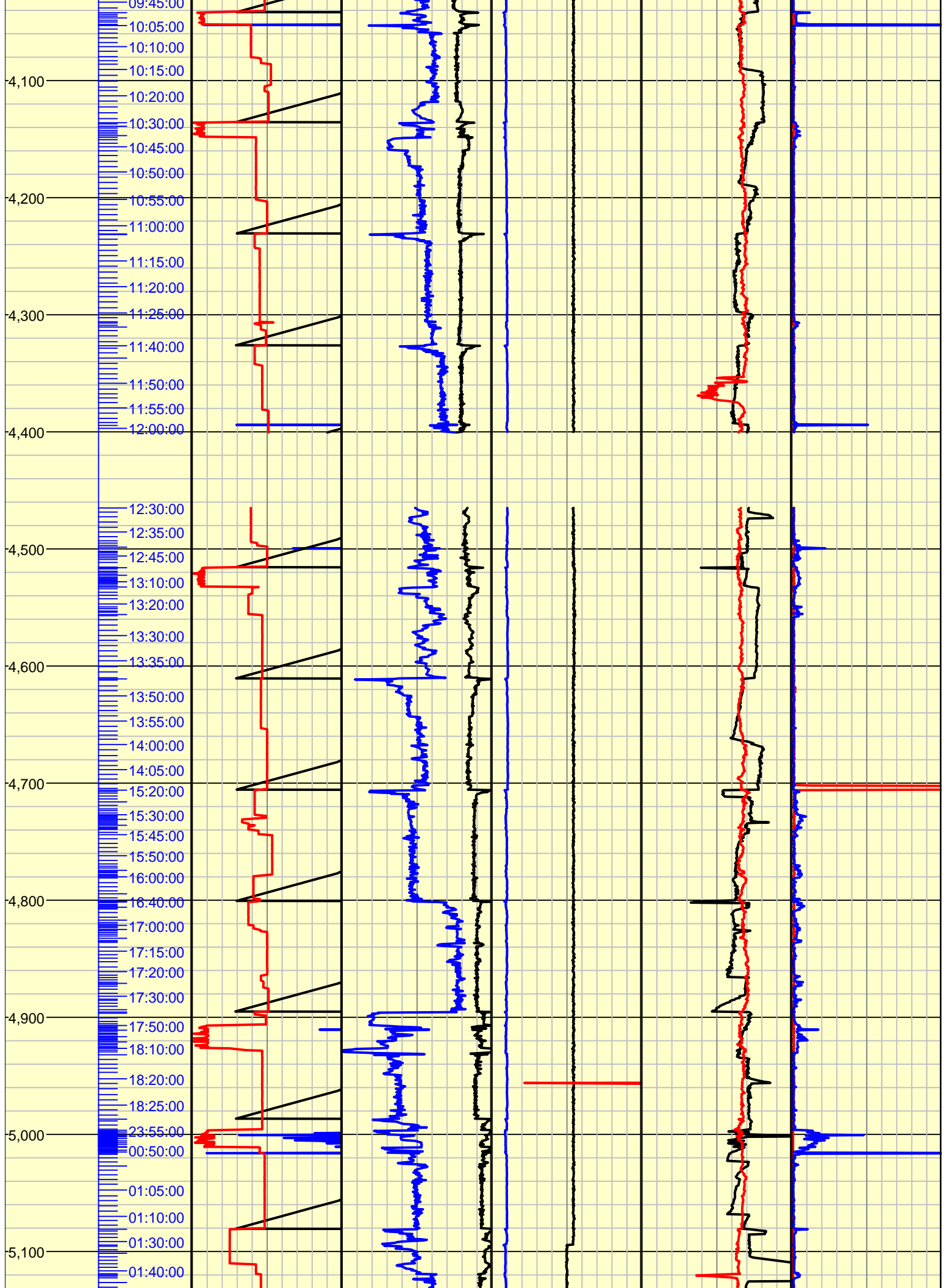
Time/Depth track	Track 1	Track 2	Track 3	Track 4	Track 5
Date: 15:00:20 9-Dec-2013	ROP Depth/Hour 0 <0 ft/hr 20>	Hookload N/A <0 klbs 100>	Pump Pressure N/A <0 psi 22000>	Pit Volume Active 0 <0 bbls 100>	Gas Total - units N/A <0 units 500>
Depth-Bit: 9,003.32	Block Position N/A <-10 ft 25>	Weight on Bit 0 <0 klbs 30>	SPM Total 0 <0 spm 240>	Pit G/L Active -512.76 <-50 bbls 20>	ROP Minute/Depth 0 <0 min/ft 20>
Depth-Hole: 9,005	Rotary RPM N/A <0 rpm 120>	Rotary Torque N/A < >	Pump Volume Total 826.62 <0 bbls 3>	Return Flow N/A <0 % 100>	MWD Gamma (API) N/A < >
Rig # M15					
NABORS DRILLING USA, LP					
ENCANA CORPORATION					

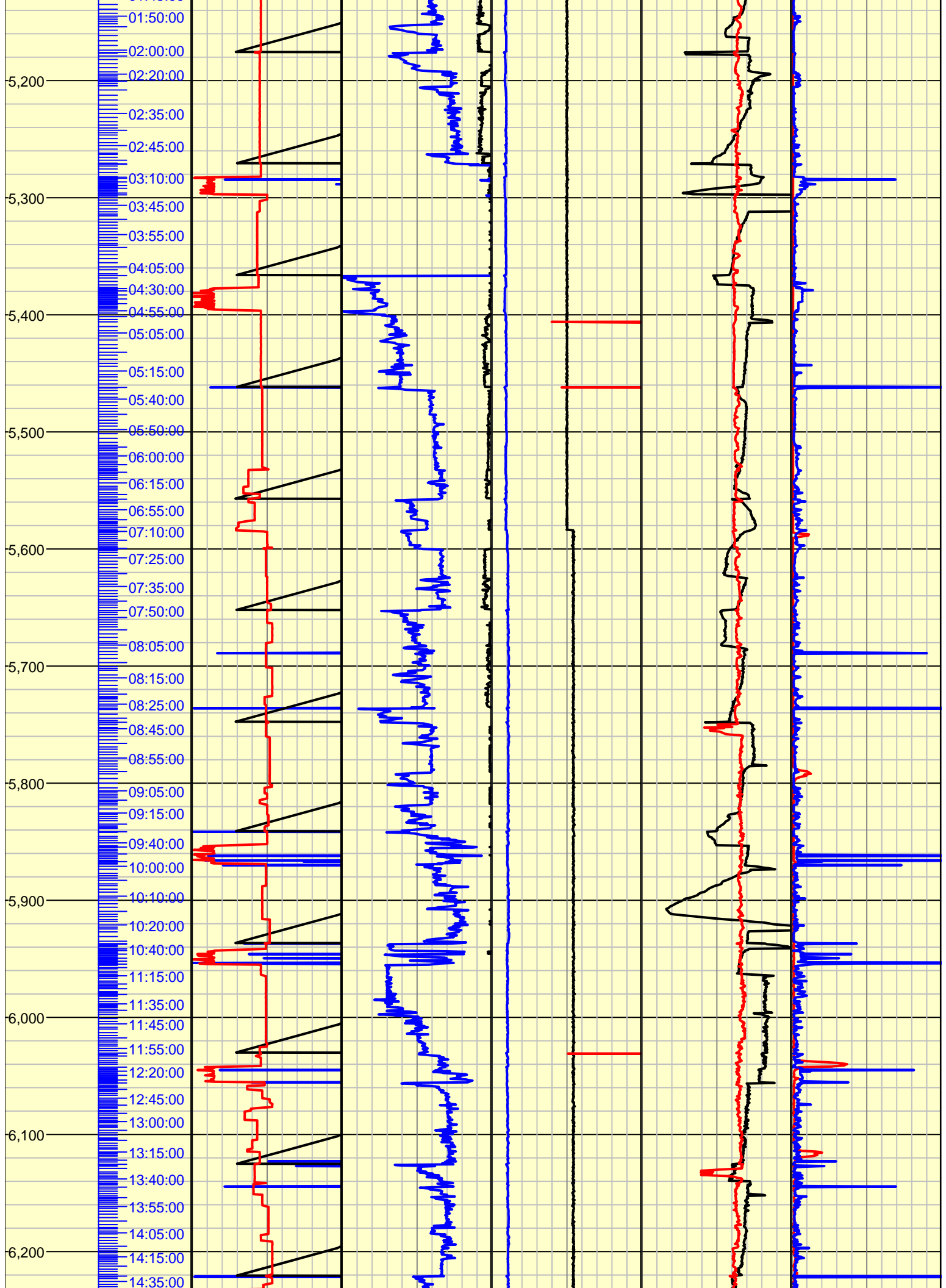


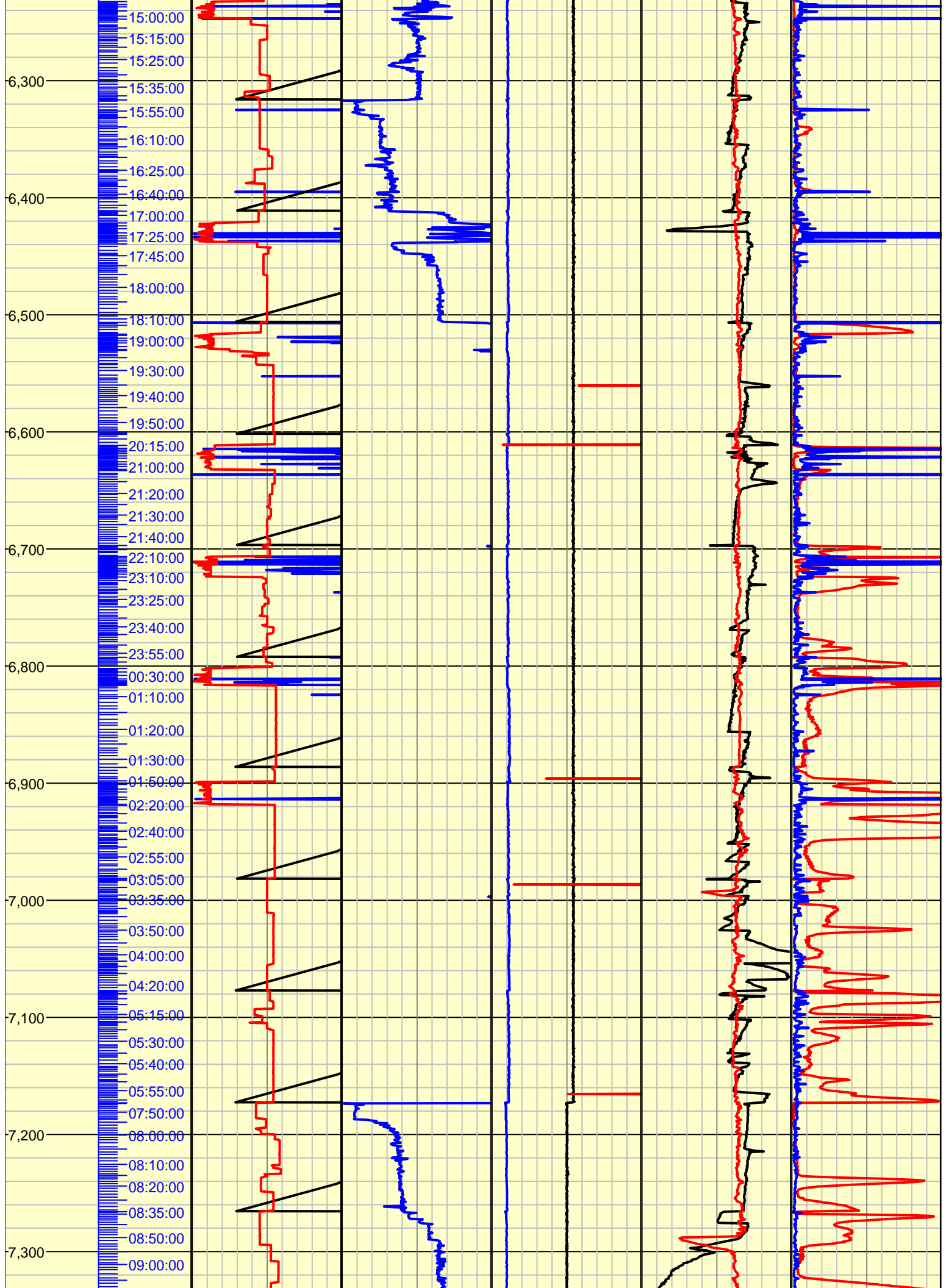


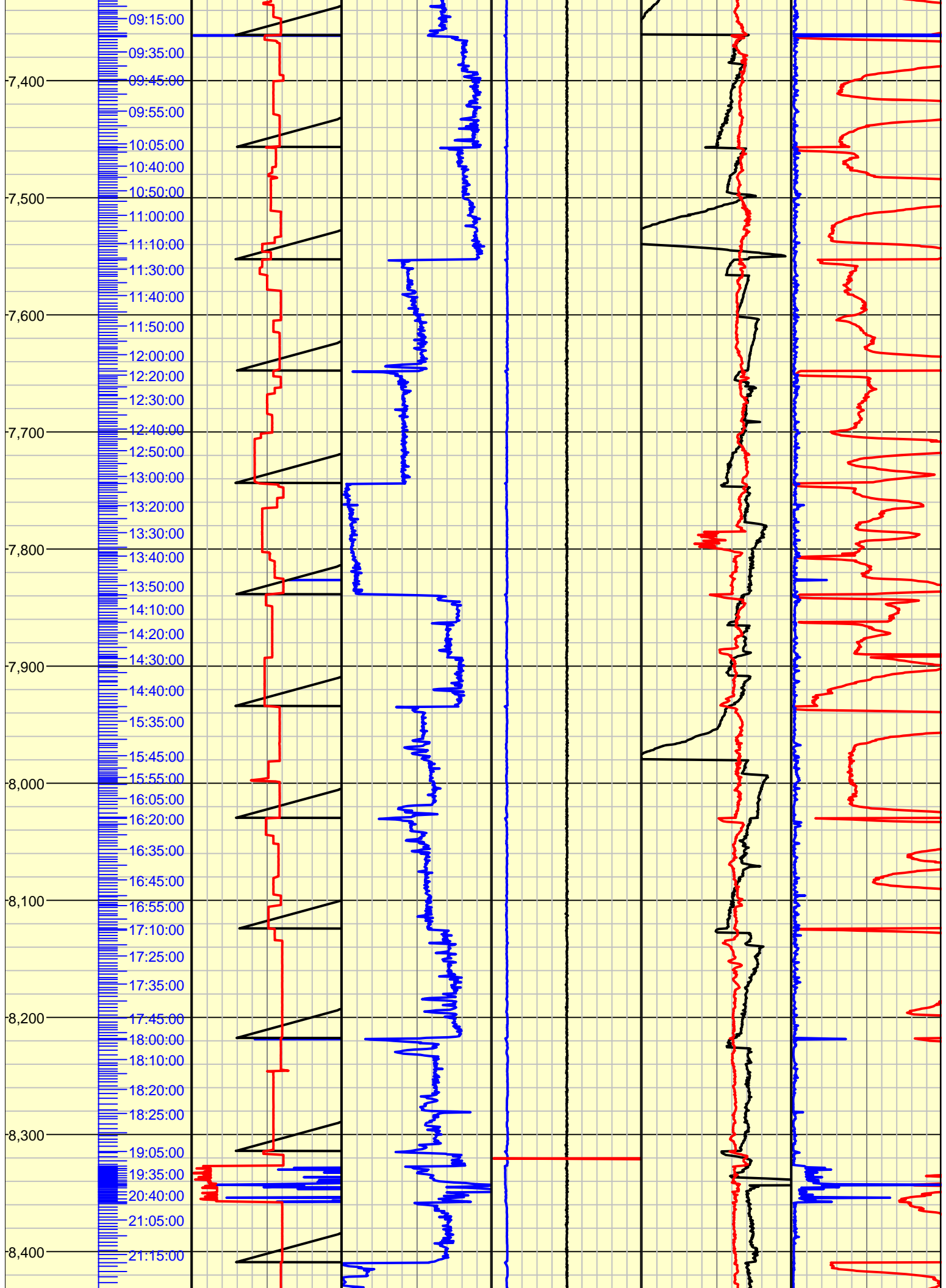


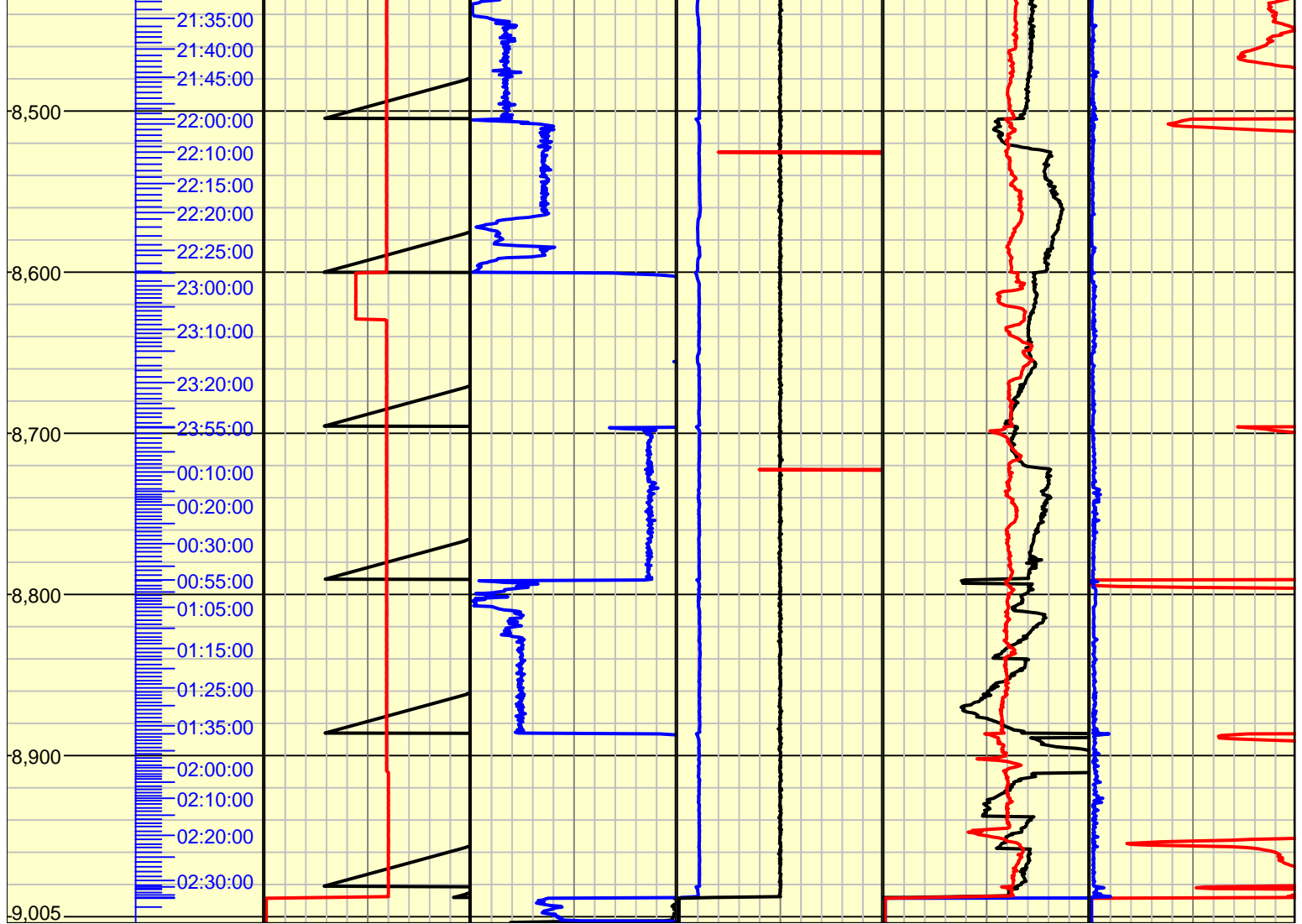












The log data, interpretations and recommendations provided by Canrig are inferences and assumptions based on measurements of drilling fluids. Such inferences and assumptions are not infallible and reasonable professionals may differ. Canrig does not represent or warrant the accuracy, correctness or completeness of any log data, interpretations, recommendations or information provided by Canrig, its officers, agents or employees. Canrig does not and cannot guarantee the accuracy of any such interpretation of the log data, interpretations or recommendations and ENCANA CORPORATION is fully responsible for all decisions and actions it takes based on such log data, interpretations and recommendations.