

# HALLIBURTON

iCem<sup>®</sup> Service

**ENCANA OIL & GAS (USA) INC**

**For:**

Date: Wednesday, June 04, 2014

**EF 02B-32 G29 595**

Case 1

Sincerely,

## Legal Notice

---

### Warning Disclaimer

Although the information contained in this report is based on sound engineering practices, the copyright owner(s) does (do) not accept any responsibility whatsoever, in negligence or otherwise, for any loss or damage arising from the possession or use of the report whether in terms of correctness or otherwise. The application, therefore, by the user of this report or any part thereof, is solely at the user's own risk.

### Limitations of Liability

Except as expressly set forth herein, there are no representations or warranties by Halliburton, express or implied, including implied warranties of merchantability and/or fitness for a particular purpose. In no event will Halliburton or its suppliers be liable for consequential, incidental, special, punitive or exemplary damages (including, without limitation, loss of data, profits, use of hardware, or software). Customer accepts full responsibility for any investment made based on results from the Software. Any interpretations, analyses or modeling of any data, including, but not limited to Customer data, and any recommendation or decisions based upon such interpretations, analyses or modeling are opinions based upon inferences from measurements and empirical relationships and assumptions, which inferences and assumptions are not infallible, and with respect to which professional may differ. Accordingly, Halliburton cannot and does not warrant the accuracy, correctness or completeness of any such interpretation, recommendation, modeling or other products of the Software Product. As such, any interpretation, recommendation or modeling resulting from the Software for the purpose of any drilling, well treatment, production or financial decision will be at the sole risk of Customer. Under no circumstances will Halliburton or its suppliers be liable for any damages.

Table of Contents

---

To Generate a Table of Contents, right click here. Click "Update Field." If prompted, select "Entire Table."

---

## 1.0 Real-Time Job Summary

---

### 1.1 Stage Summary - Liquid Volume, Density, & Design Shutdown

---

### 1.2 Stage Summary - Pump Pressure & ECD

---

### 1.3 Stage Summary - Pump Rate & Nitrogen Rate

---

### 1.4 Shutdown Summary

---

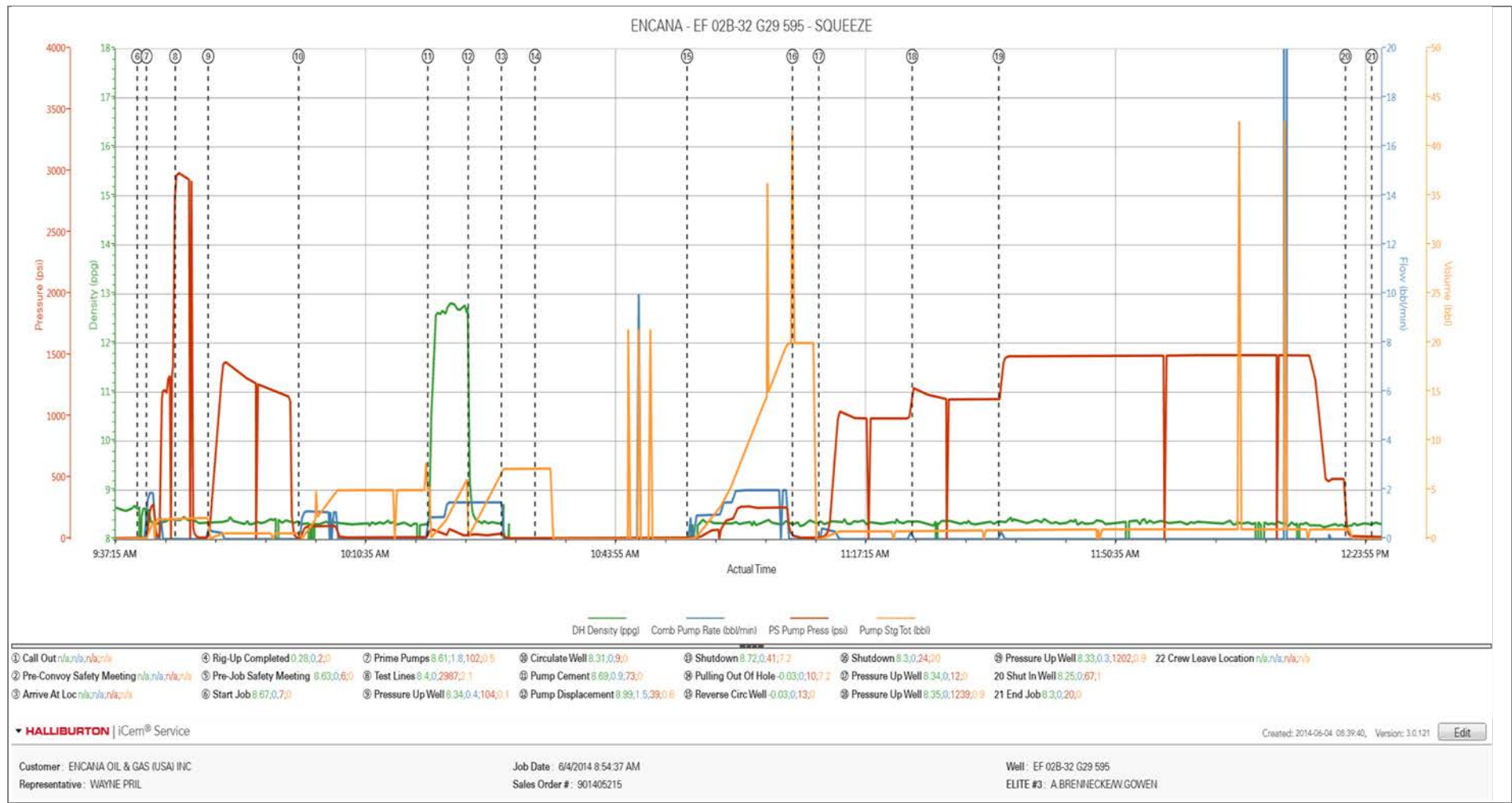
## 1.1 Job Event Log

Type	Seq. No.	Activity	Graph Label	Date	Time	Source	DH Density (ppg)	Comb Pump Rate (bbl/min)	PS Pump Press (psi)	Pump Stg Tot (bbl)	Comment
Event	1	Call Out	Call Out	6/4/2014	02:00:00	USER					
Event	2	Pre-Convoy Safety Meeting	Pre-Convoy Safety Meeting	6/4/2014	04:55:00	USER					ALL HES PRESENT
Event	3	Arrive At Loc	Arrive At Loc	6/4/2014	06:30:00	USER					RIG PULLING TUBING.
Event	4	Rig-Up Completed	Rig-Up Completed	6/4/2014	09:05:00	USER	0.28	0.00	2.00	0.0	1-ELITE, 1-400 BODY LOAD, 2" PUMP IRON, 1 SQUEEZE MANIFOLD.
Event	5	Pre-Job Safety Meeting	Pre-Job Safety Meeting	6/4/2014	09:25:00	USER	8.63	0.00	6.00	0.0	ALL HES AND ENCANA PERSONEL PRESENT
Event	6	Start Job	Start Job	6/4/2014	09:40:25	COM5	8.35	0.00	7.00	0.0	TP-3157.12', PLUG-6695, TUBE-2.375", 4.7#, CSG-4.5", 11.6#, MUD- 8.5 H2O
Event	7	Prime Pumps	Prime Pumps	6/4/2014	09:41:39	COM5	8.33	2.00	270.00	2.0	FRESH WATER
Event	8	Test Lines	Test Lines	6/4/2014	09:45:29	COM5	8.40	0.00	2987.00	2.1	PRESSURE HELD AT 2987 PSI
Event	9	Pressure Up Well	Pressure Up Well	6/4/2014	09:49:53	COM5	8.34	0.40	1278.00	0.5	PRESSURED WELL TO 1450PSI, BLED BACK TO 1161 AFTER 10 MINS.
Event	10	Circulate Well	Circulate Well	6/4/2014	10:01:56	COM5	8.31	1.10	109.00	5.0	CIRCULATED 5 BBLS H2O AHEAD. RETURNS @1.5 AWAY.
Event	11	Pump Cement	Pump Cement	6/4/2014	10:19:09	COM5	12.72	1.50	88.00	7.6	50SKS, 12.7 PPG, .86FT3/SK, 4.46 GAL/SK
Event	12	Pump Displacement	Pump Displacement	6/4/2014	10:24:32	COM5	8.40	1.50	39.00	10.0	FRESH WATER. FINISHED PUMPING 10BBLS WITH 6X5 PUMP.
Event	13	Shutdown	Shutdown	6/4/2014	10:28:58	USER	8.42	0.00	41.00	10.0	OPENED RELEASE WELL WAS ON A SUCK
Event	14	Pulling Out Of Hole	Pulling Out Of Hole	6/4/2014	10:33:27	USER	-0.03	0.00	10.00	0.0	RIG PULLED 20 STANDS, ALL DRY.
Event	15	Reverse Circ Well	Reverse Circ Well	6/4/2014	10:53:43	COM5	8.35	2.00	268.00	20.0	REVERSED AND ONLY SAW DIRTY WATER.
Event	16	Shutdown	Shutdown	6/4/2014	11:07:46	USER	8.30	0.00	24.00	20.0	

Event	17	Pressure Up Well	Pressure Up Well	6/4/2014	11:11:17	COM5	8.34	0.4	1050.00	0.8	PRESSURED WELL UP TO 1050PSI, LEVELED OUT AT 985PSI. HELD FOR 10 MINS.
Event	18	Pressure Up Well	Pressure Up Well	6/4/2014	11:23:44	USER	8.35	0.30	1239.00	0.9	PRESSURED WELL UP TO 1240PSI, LEVELED OUT AT 1135PSI. HELD FOR 10 MINS.
Event	19	Pressure Up Well	Pressure Up Well	6/4/2014	11:35:17	USER	8.33	0.30	1496.00	1.0	PRESSURED UP WELL UP TO 1496 PSI HELD FOR 43 MINS. FINAL PSI 1501.
Event	20	Shut In Well	Shut In Well	6/4/2014	12:21:30	USER	8.25	0.00	507.00	1.0	bled pressure back to 500 PSI AND SHUT IN WELL. .25 BBL BACK TO DISPLACEMENT TANK.
Event	21	End Job	End Job	6/4/2014	12:25:00	COM5	8.30	0.00	20.00	0.0	
Event	22	Crew Leave Location	Crew Leave Location	6/4/2014	13:30:00	USER					THANK YOU FOR CHOOSING HALLIBURTON, ANDREW BRENNECKE AND CREW.

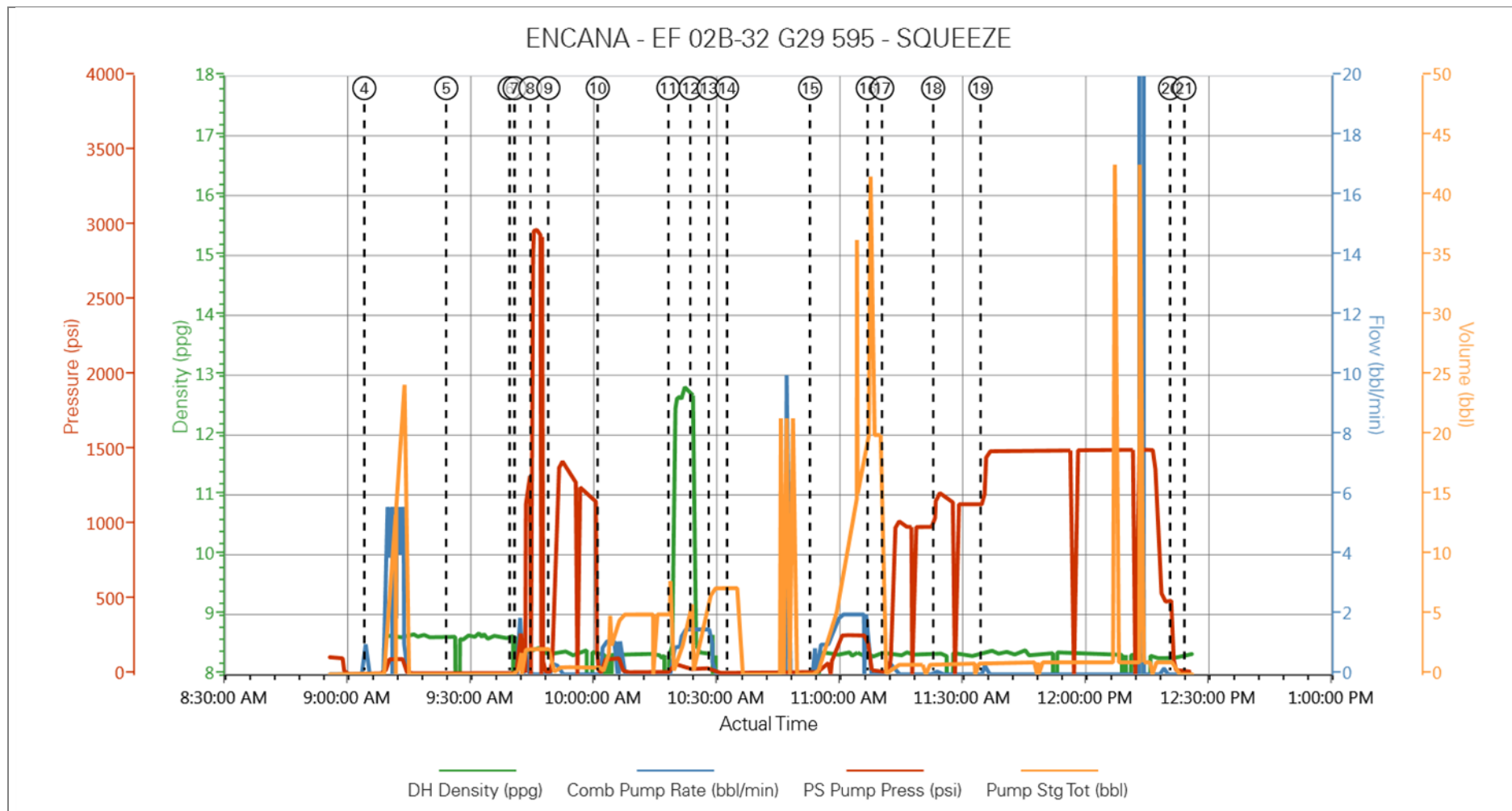
2.0 Attachments

2.1 Case 1-Custom Results.png



## 3.0 Custom Graphs

### 3.1 Custom Graph





## 4.0 Appendix

---

### 4.1 One-Minutes Real-Time Data Listing

---