



RESERVOIR PERFORMANCE MONITOR

Baker Atlas

File No: CH085276 Company WPX ENERGY

Well PA 311-7

Field PARACHUTE

County GARFIELD State COLORADO

API No: 0504522280000

Location

SHL: 741' FSL & 755' FWL 6 7S 95W

BHL: 148' FNL & 593' FWL (NNWN) 7S 95W

SEC 7 TWP 7S RGE 95W

Other Services RPM

6 7S 95W
PA 14-6 PAD
NABORS 674

Permanent Datum

GL Elevation 5153 ft
KB 26 ft Above P. D.
KELLY BUSING

Log Measured From

Elevations
KB 5179 ft
DF
GL 5153 ft

Drill Measured From

Date	03/MAY/14	
Run	ONE	
Service Order	US085276J	
Depth Driller	6547 ft	
Depth Logger	6512 ft	
Bottom Logged Interval	6502 ft	
Top Logged Interval	3201 ft	
Time Started	1000	
Time Finished	1500	
Operator Rig Time	5 HRS	
Type of Fluid in Hole	WATER	
Fluid Density	NA	
Salinity	NA	
Fluid Level	65 ft	
Logged Cement Top	NA	
Wellhead Pressure	0 psi	
Maximum Hole Deviation	NA	
Nominal Logging Speed	65 fpm	
Maximum Recorded Temperature	211 degF	
Reference Log	BAKER HUGHES	
Reference Log Date	03/MAY/14	
Equipment No.	4271	GRAND UCT
Recorded By	FLOYD RENEAU	
Witnessed By	CHRIS TILLER	

- FOLD HERE

In making interpretations of logs, our employees will give the customer the benefit of their best judgement. But since all interpretations are opinions based on inferences from electrical or other measurements, we cannot, and we do not guarantee the accuracy or correctness of any interpretation. We shall not be liable or responsible for any loss, cost, damages, or expenses whatsoever incurred or sustained by the customer resulting from any interpretation made by any of our employees.

Borehole Record		
Bit Size	From	To
13.5 in	26 ft	1016 ft
8.75 in	1016 ft	6547 ft

Casing Record				
Size	Weight	Grade	From	To
9.625 in			26 ft	1016 ft
4.5 in	11.6 lbm/ft	I-80	26 ft	6547 ft

Remarks
All data on this log is shifted and depth matched using the Gamma Ray curve to the Baker Hughes bond log dated 5/3/2014 at the client's request.
The amount of linear shift is 5.5 feet.
Logged in PNC-3D mode.
BHT = 211 °F
SJ = 2892'-2915'

Equipment Data					
Run	Trip	Tool	Series Number	Serial Number	Position
1	1	TEMP	8255XA	11774568	FREE
1	1	RPM	8281FA	10401926	FREE
1	1	RPM	8281PA	10585555	FREE
1	1	RPM	8281EA	10303640	FREE
1	1	GR	2812LA	10274382	FREE
1	1	TEL/CCL	8248ED	10296408	FREE
1	1	PCM	8250EA	10397894	FREE

MAIN SECTION
PNC 3-D MODE

SPL PROCESSING

MEASUREMENT TYPE	PARAMETER	VALUE	UNITS	TOP	BOTTOM
PNC Porosity	Borehole	Cased		3179.772	6506.000
PNC Porosity	Borehole Size	8.750	inch	3179.772	6506.000
PNC Porosity	Casing Size	4.500	inch	3179.772	6506.000
PNC Porosity	Gas Filled	Non Gas Filled		3179.772	6506.000
PNC Porosity	Matrix	Sandstone		3179.772	6506.000
TPS Pressure	Temperature Corr. Source	Fixed (72.00)	degF	3179.772	6506.000

DEPTH OFFSETS
(for Acquired Curves)

SERIES	DEPTH OFFSET	ACQUIRED CURVES
8248ED	-26.519	FLTM
8248ED	-24.519	CCL CHV
2812LA	-21.969	GR
8281XA	-12.702	HVC3Q0 SEQ3 AMA3 AML3 BKX CXS CPT3Q0 CPT3Q2 CPT3Q3 CPT3Q4 ET3 IXS MCS3 MCS3Q0 QCAL3 RGN3 RICX SDA3

		SDL3	SGA3	SGL3	STA3	XS	ASPEC3
		AMB3	AMF3	CHF3	IXSC	IXSN	RATO23
		RICXC	RIN13C	RIN23	RIN23C	SD3D	SG3D
		SGB3	SGF3	WDTH3	CXSR	IXSR	XSR
		RICXR					
8281XA	-12.291	HVC2Q0	SEQ2	AMA2	AMB2	AMF2	AML2
		BKL	CHF2	CLS	CPT2Q0	CPT2Q2	CPT2Q3
		CPT2Q4	ET2	ILS	LS	MCS2	MCS2Q0
		QCAL2	RGN2	RICL	RONE23	RTWO23	SDA2
		SDL2	SGA2	SGB2	SGF2	SGK2	SGL2
		STA2	ASPEC2	ILSC	ILSN	WDTH2	RICLC
		CLSR	ILSR	LSR	RICLR		
8281XA	-12.041	CPRS	HVC1Q0	MV	SEQ	SEQ1	AMA1
		AMB1	AME1	AMF1	AML1	BKS	CHF1
		CSS	CORB	CORF	CPT1Q0	CPT1Q2	CPT1Q2A
		CPT1Q2B	CPT1Q2C	CPT1Q3	CPT1Q4	CPT1Q5	ET1
		G1	G2	GE1S	GE2S	ISS	MCS1
		MCS1Q0	QA1	QCAL1	QM1	RATO	RATO13
		RBOR	RGN1	RICS	RIN	RONE	RPOR
		RTWO	RIN13	RONE13	RTWO13	SALB	SC1
		SDA1	SDL1	SGA1	SGB1	SGBC	SGE1
		SGF1	SGFC	SGK1	SGL1	SS	SS2
		STA1	PD1S	PD2S	PD3S	MD1S	MD2S
		MD3S	DG1S	DG2S	DG3S	PD1M	PD2M
		PD3M	MD1M	MD2M	MD3M	DG1M	DG2M
		DG3M	MVS	MA	MVM	FILV	IAM
		TA	PVM	PVS	IAS	SSTAT	QPD1
		QPD2	QPD3	QMD1	QMD2	QMD3	QDG1
		QDG2	QDG3	QMA	QTA	QFILV	QMV
		QPV	QIA	DERR	DCNT	QPK1	QSA1
		PKS1	ASPEC1	H0C	FE2XC	ISSC	RINC
		ISSN	RDEN	WDTH1	RICSC	CSSR	G1R
		G2R	ISSR	SSR	SS2R	RATOR	RATO13R
		RBORR	RICSR	RINR	RIN13R	RONER	RPORR
		RTWOR					
8255XA	-0.792	PTFS	PTMS				
8255XA	-0.775	SPF1	SPFQ	TSCP	TSDP		
8255XA	0.000	DTEM	TEMP	TNF			
SYSTEM	0.000	TEN	TTEN				

Created by : RPM9, v5.3.1.0

Plotted by : PlotMgr, v5.4.504

Company : WPX ENERGY

Well : PA 311-7

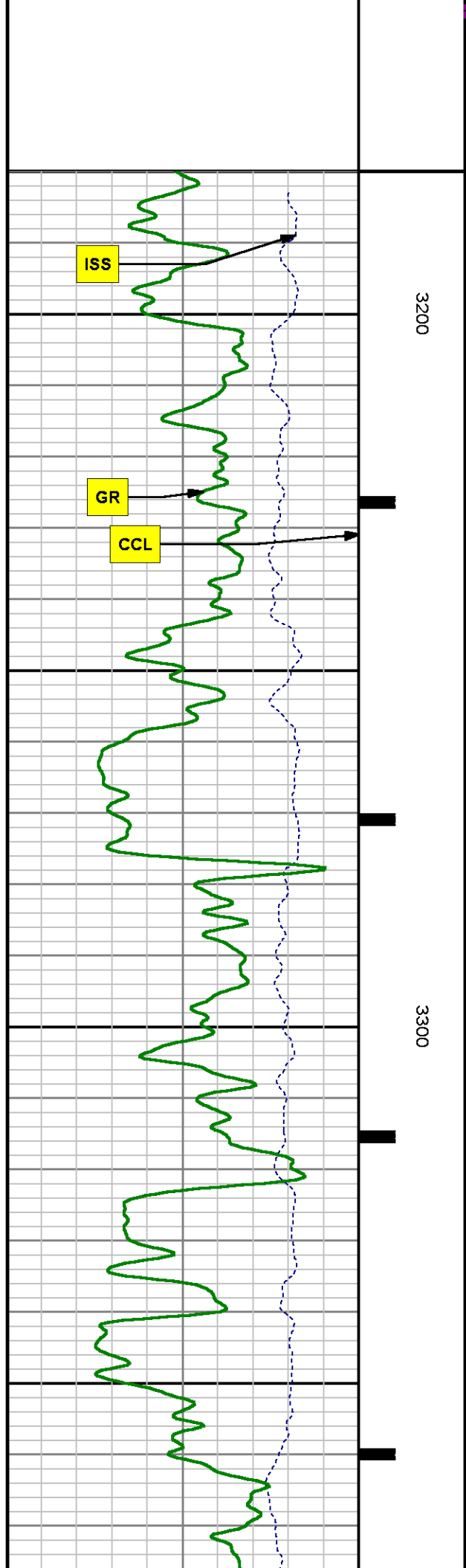
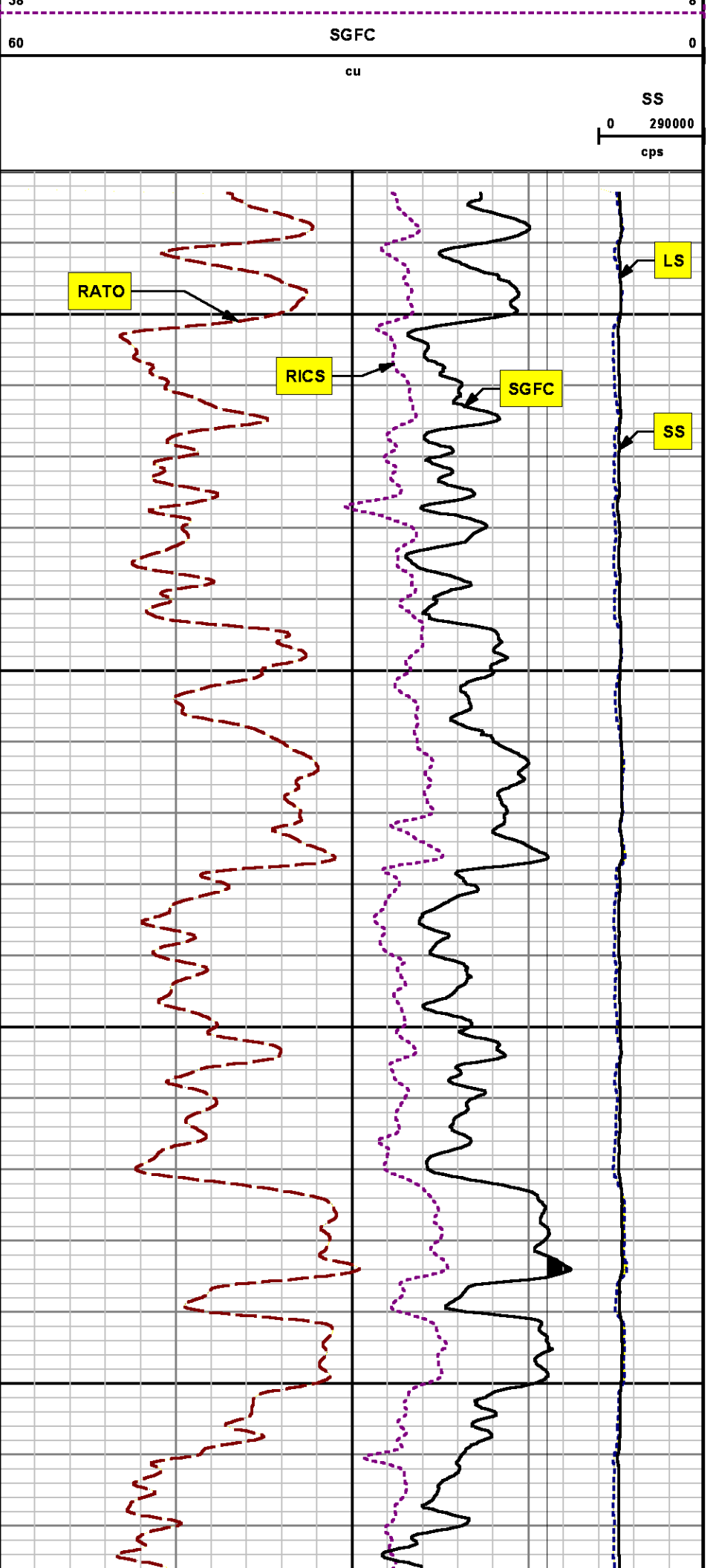
File Name : d:\welldata\wpx\pa 311-7\311rpm\main.xtf

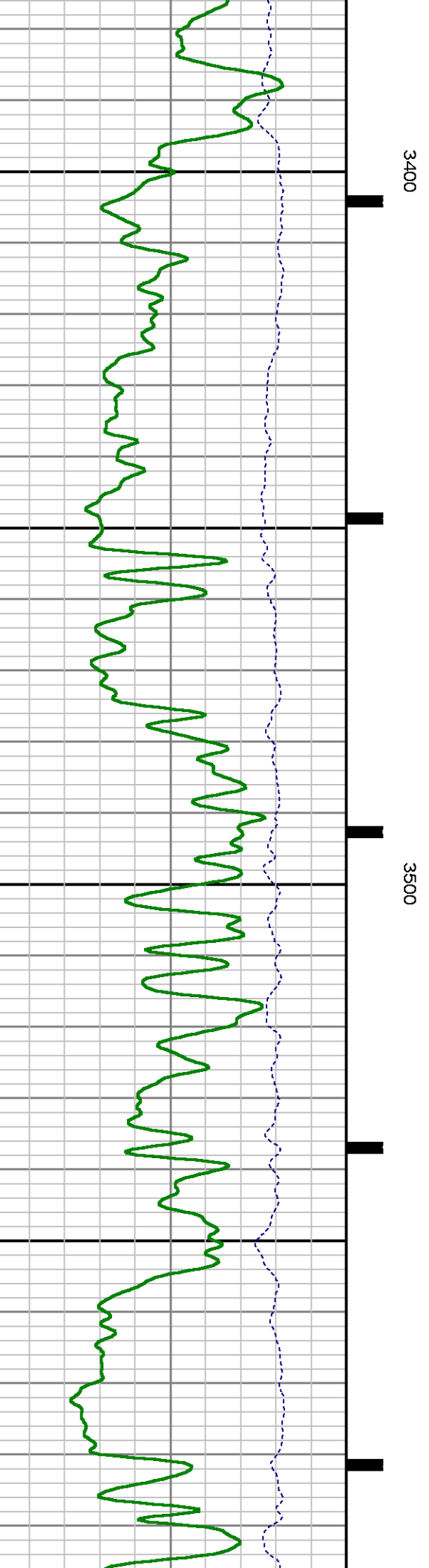
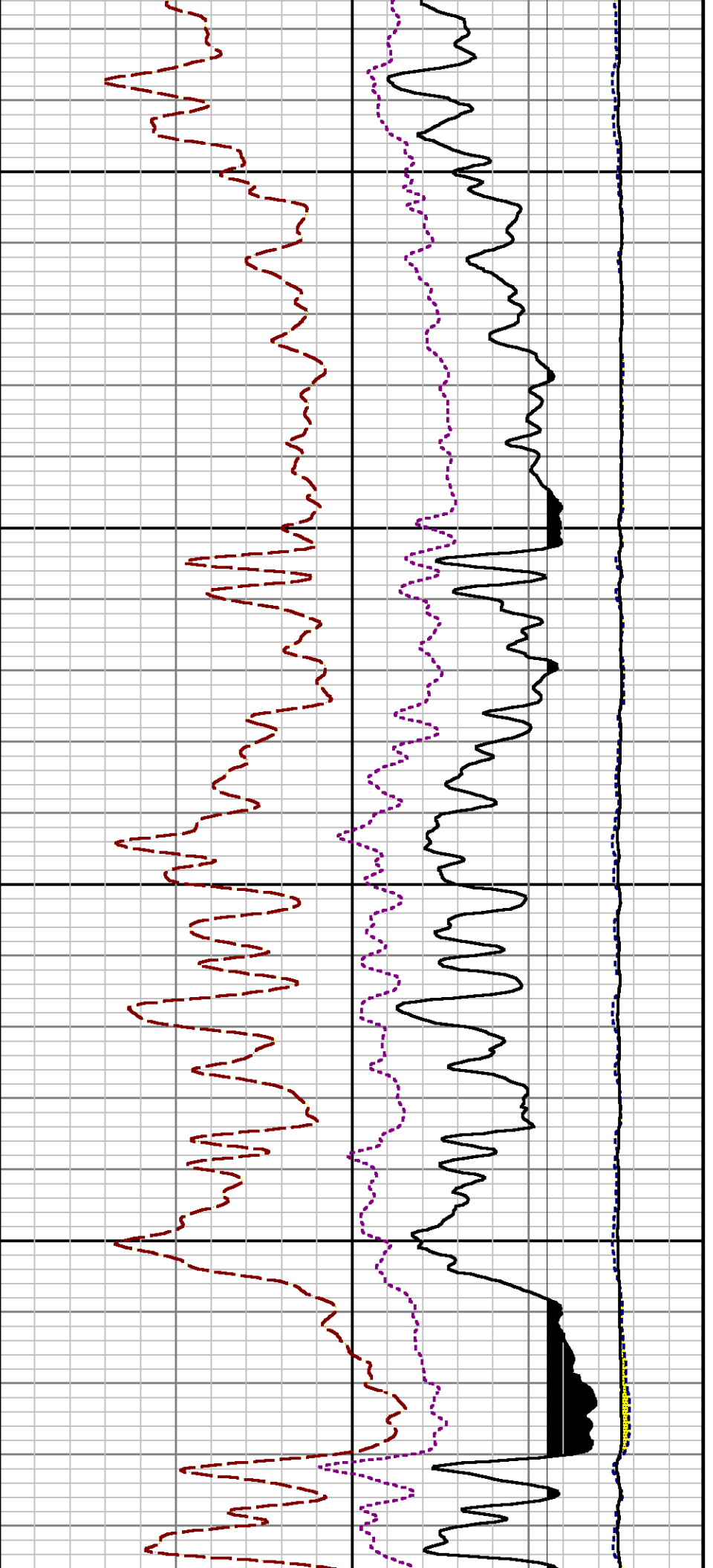
Mode : PlotMgr 5.4.504

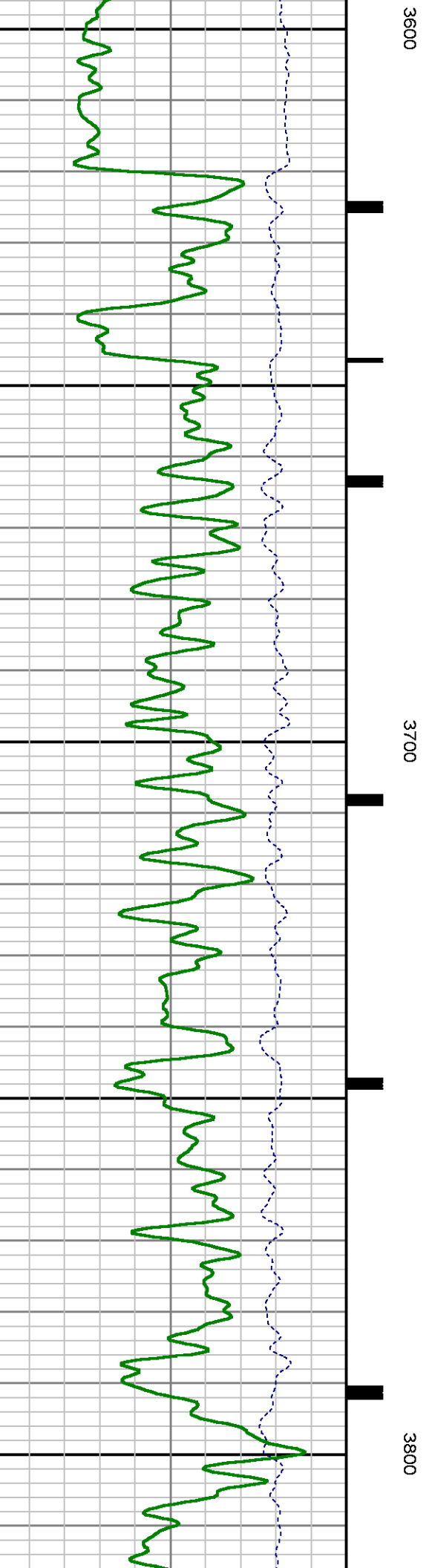
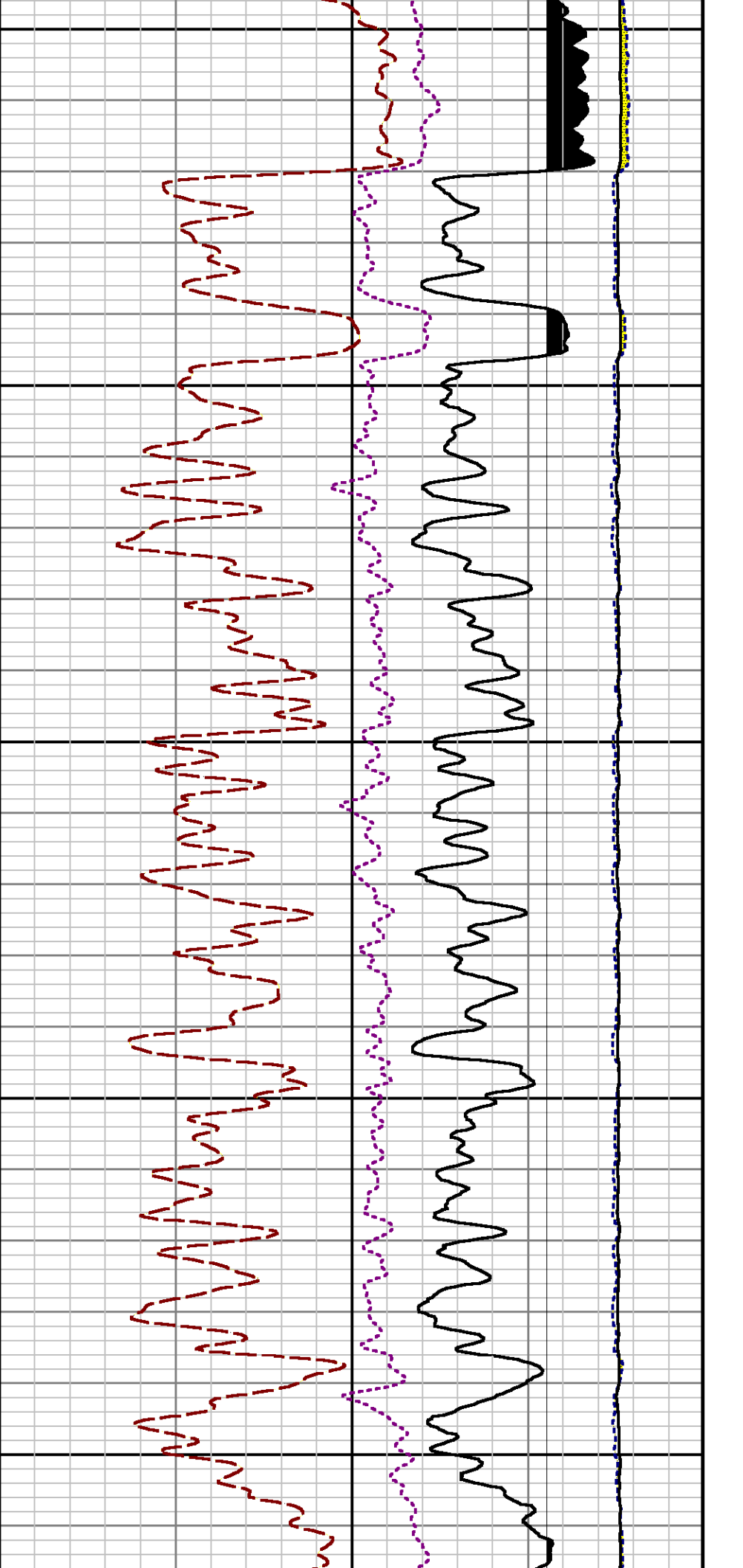
Interval : 3180.00 - 6515.00 feet UP

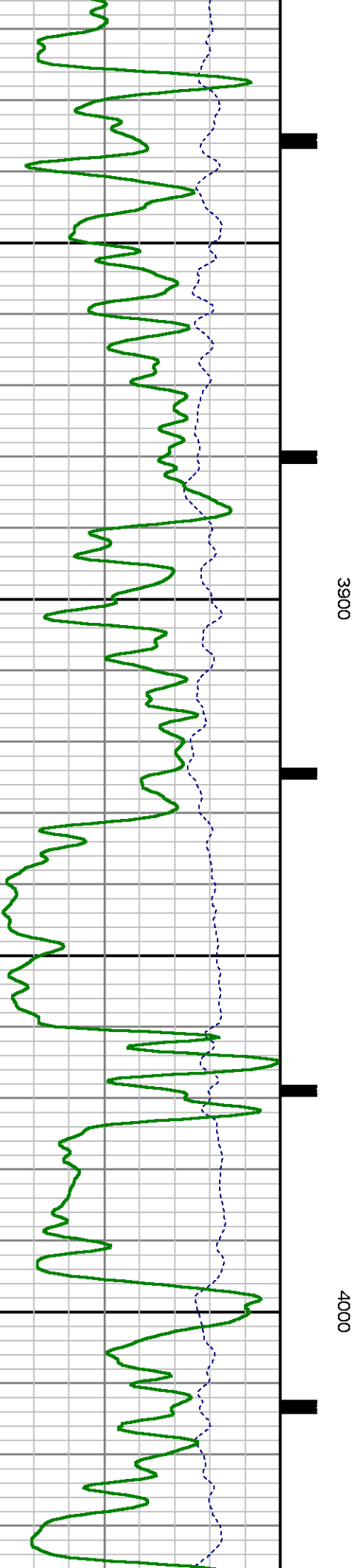
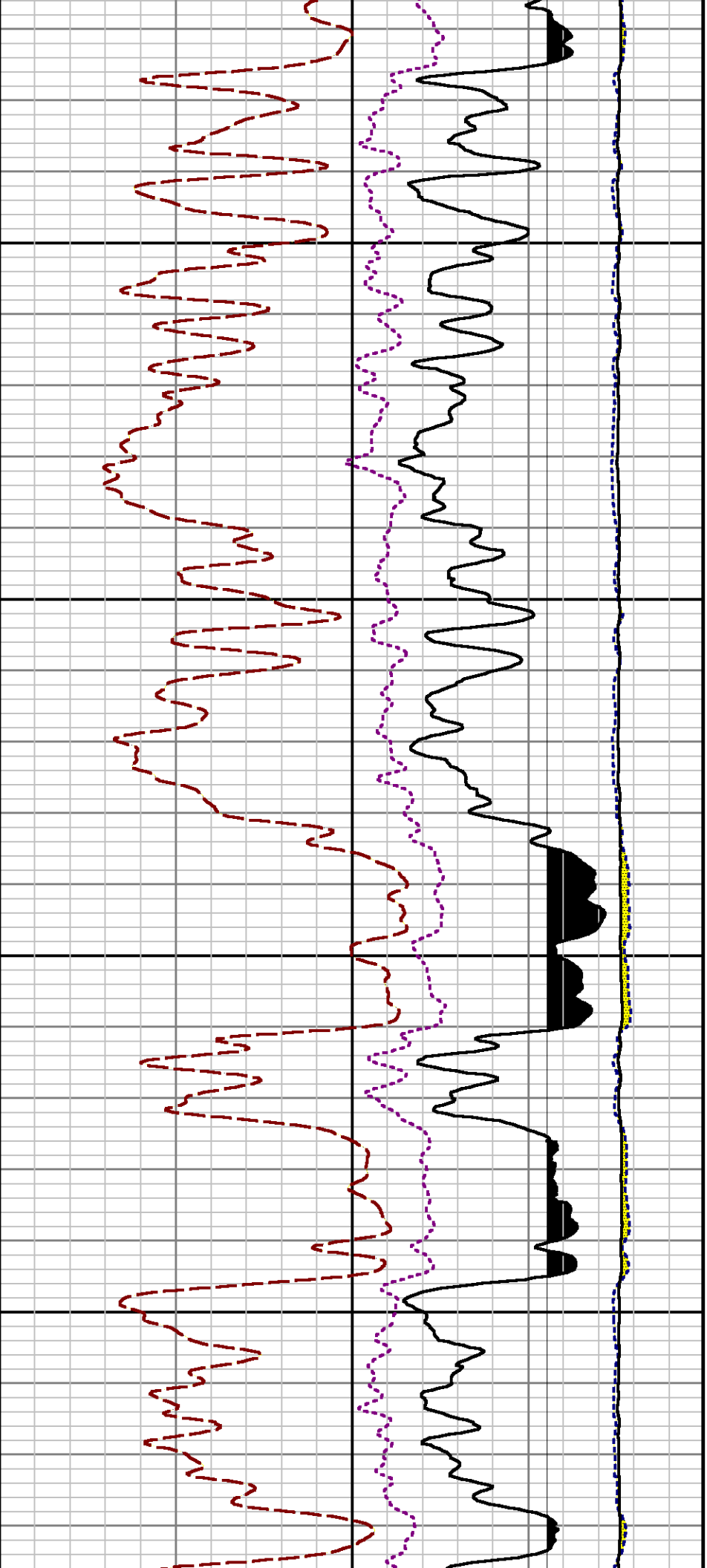
Created : 5/3/2014 11:20:10 AM

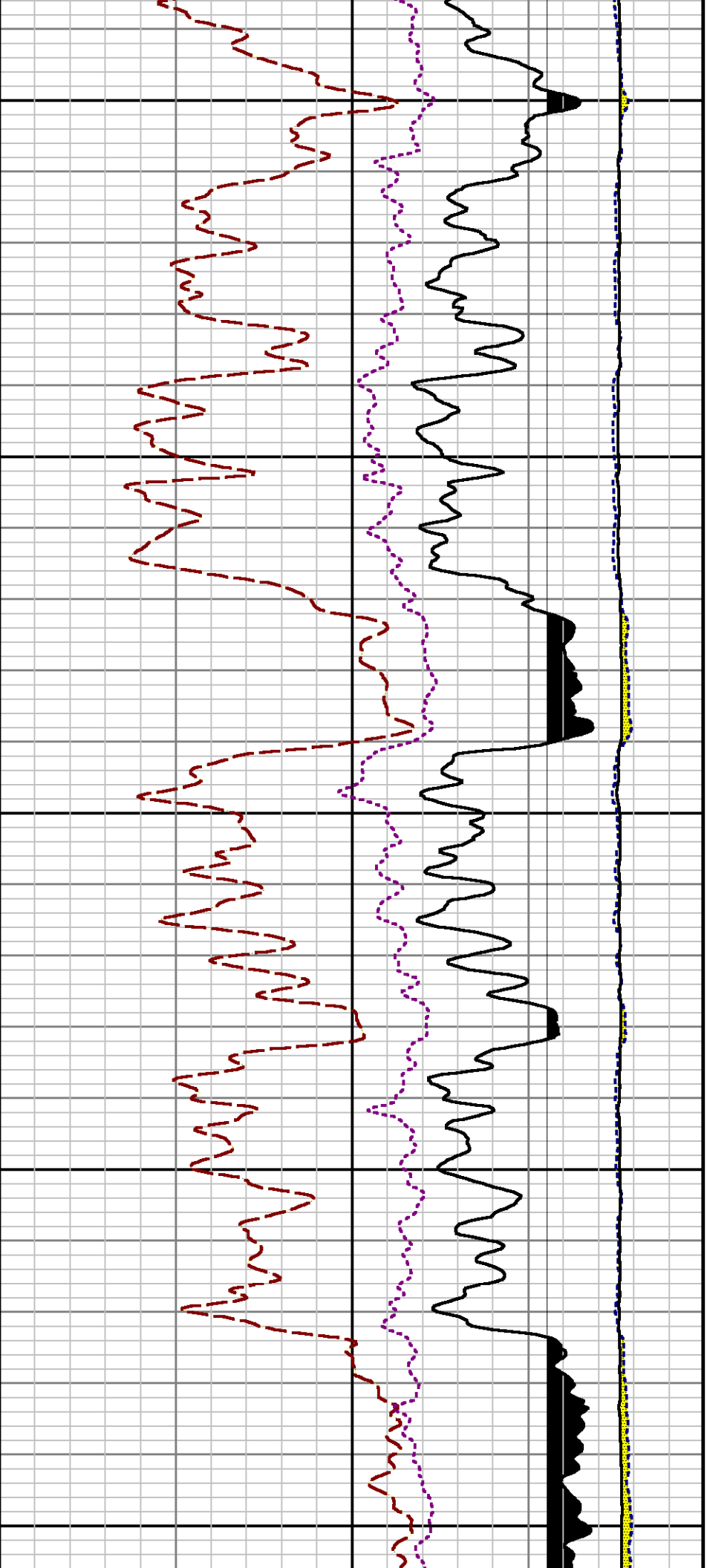






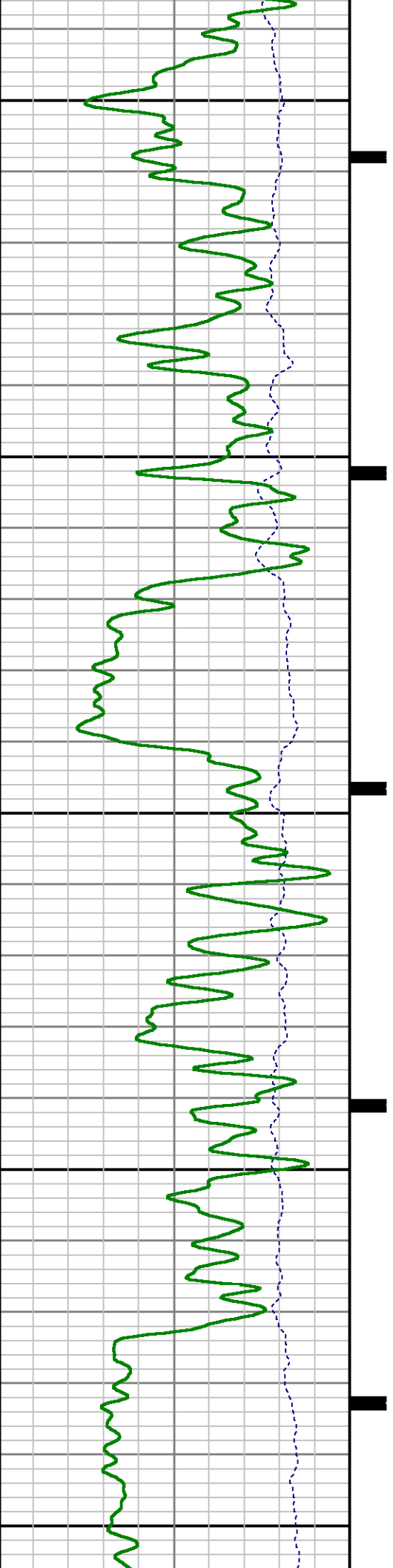


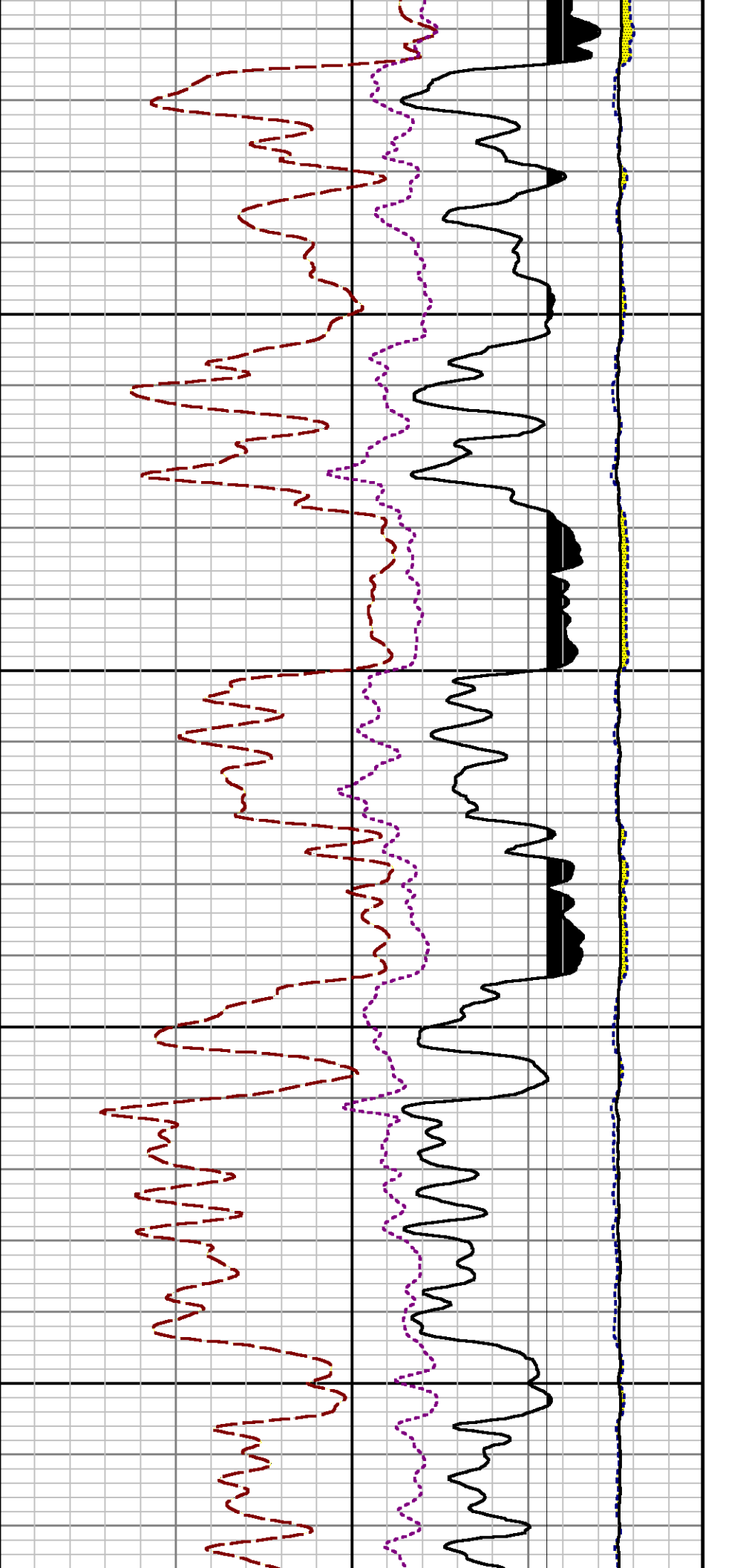




4100

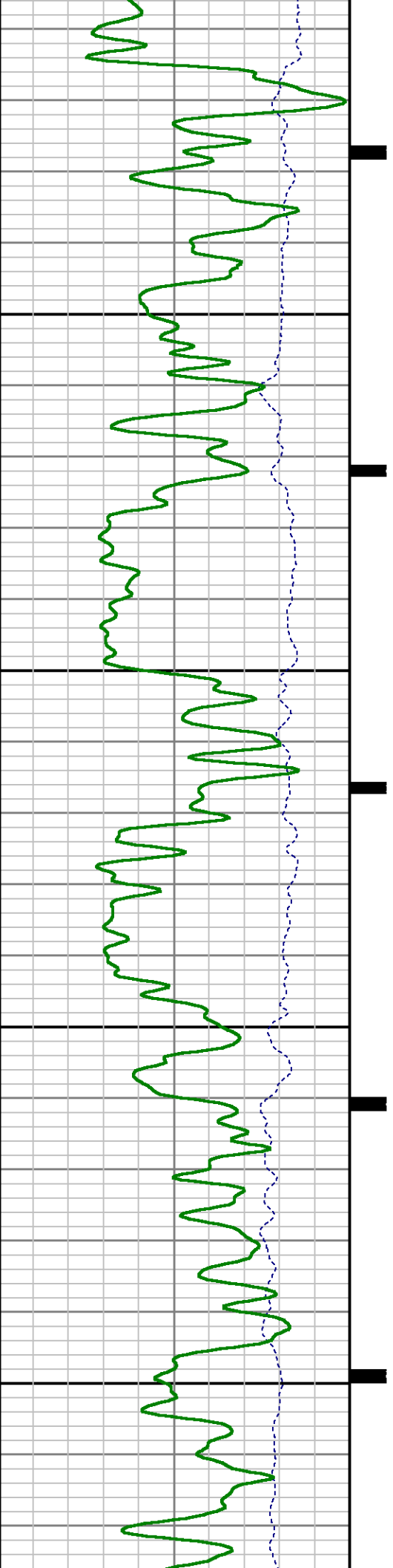
4200

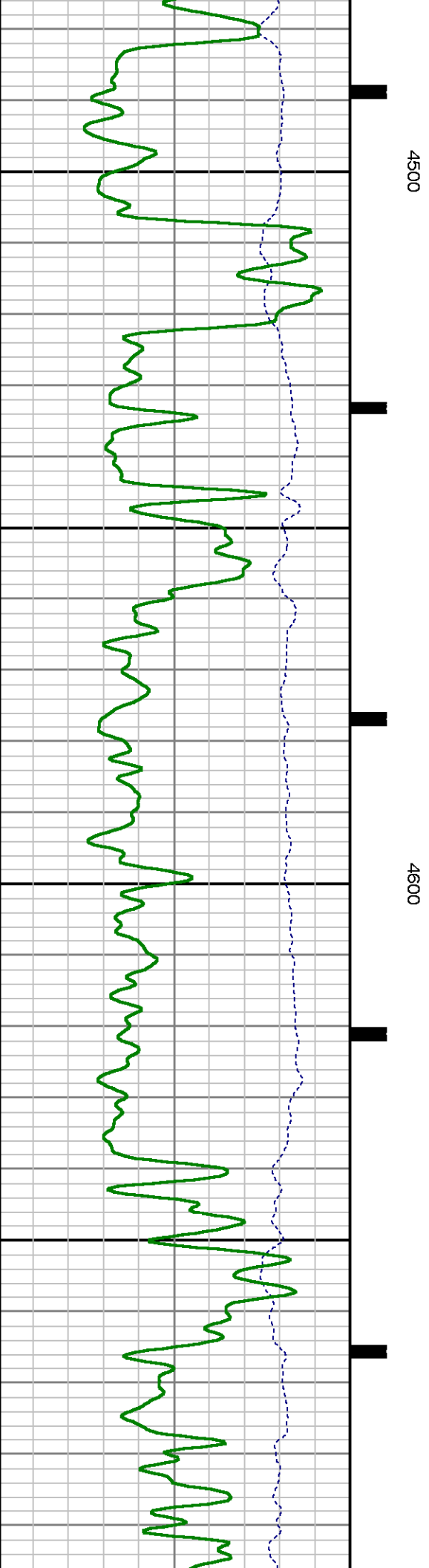
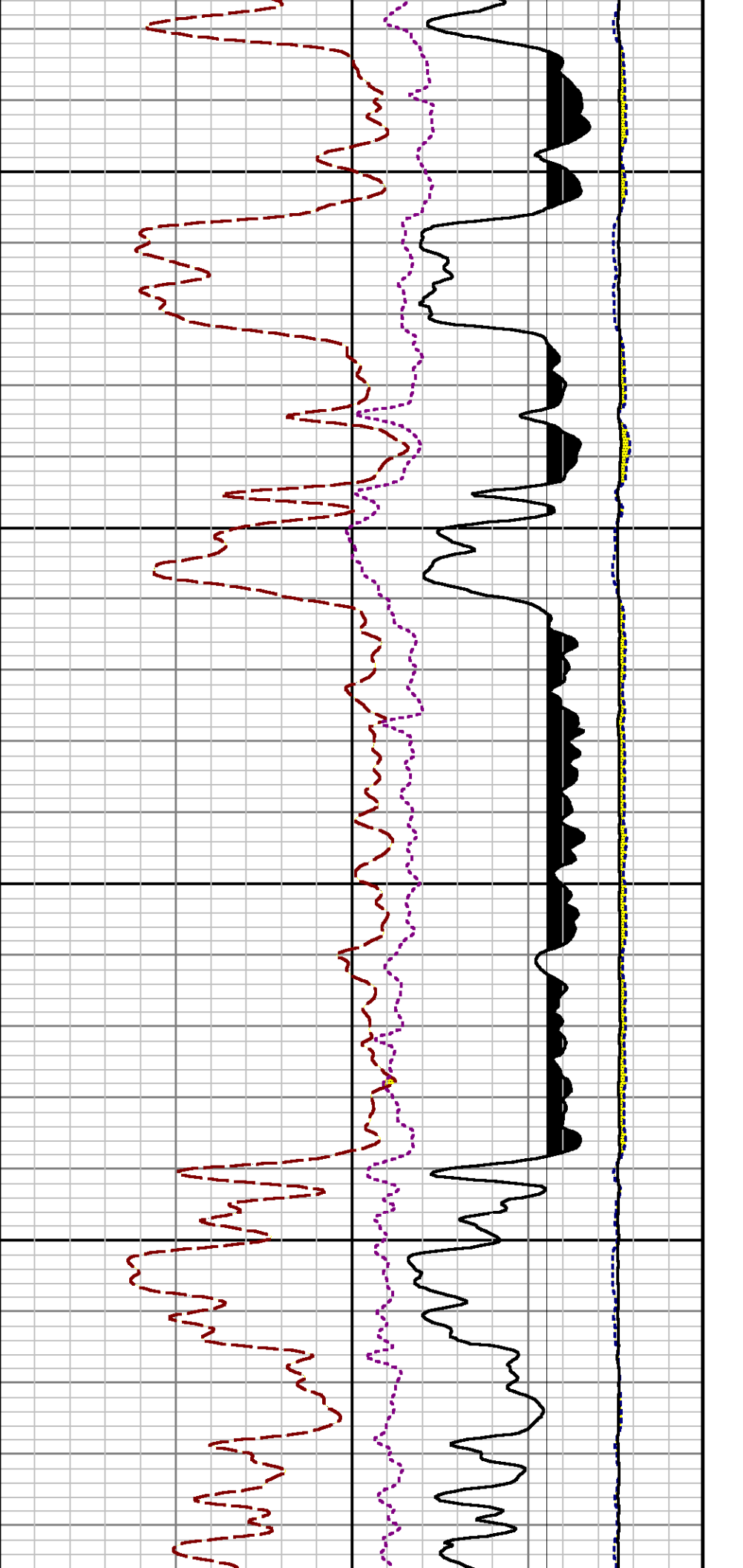


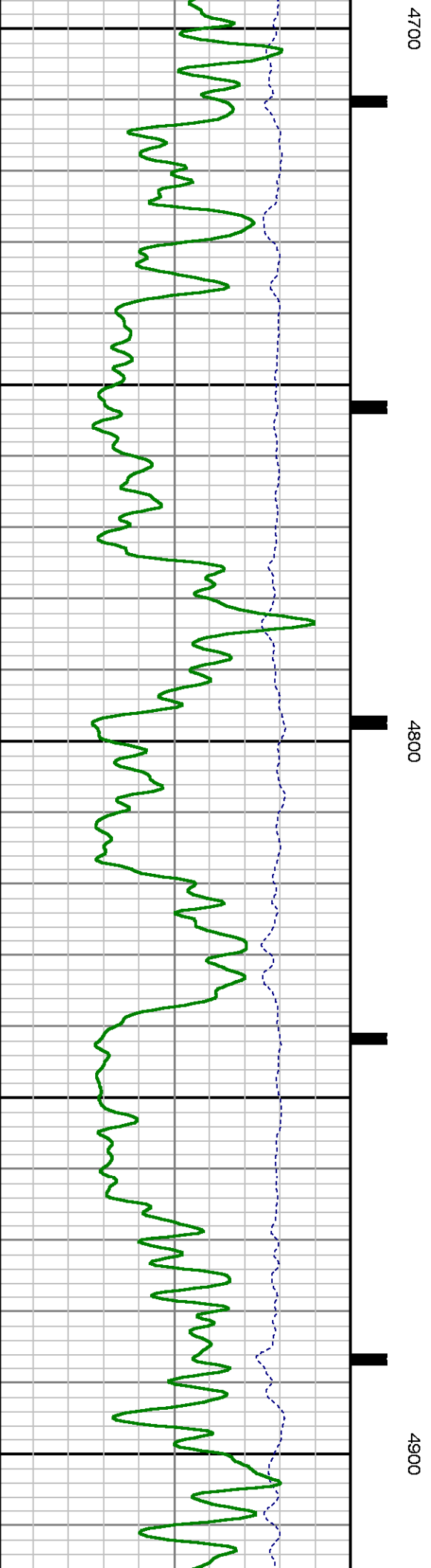
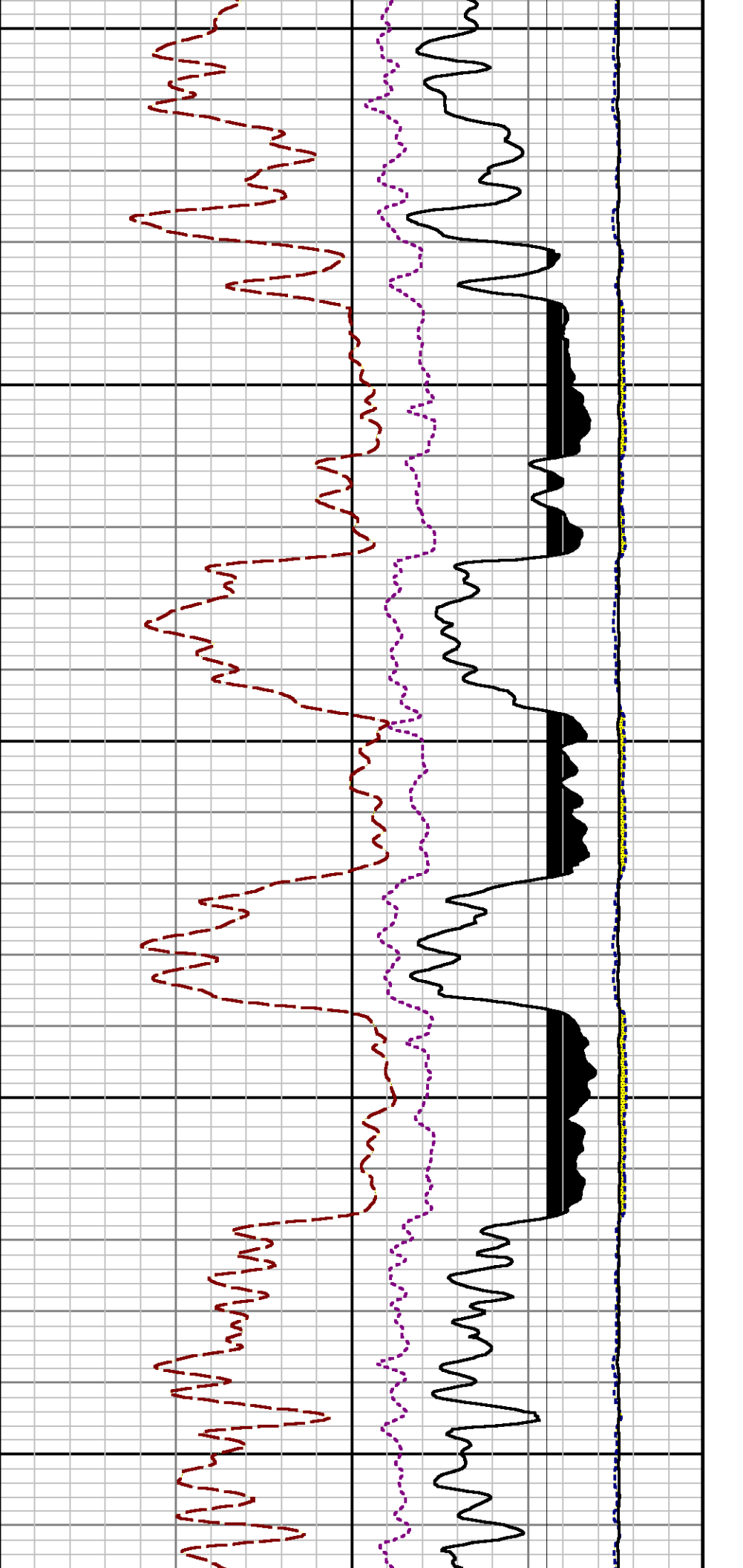


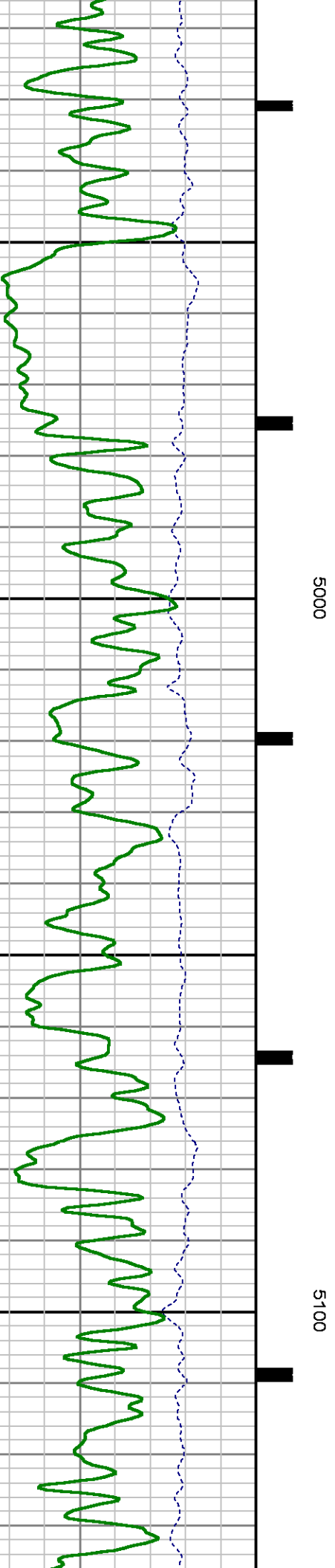
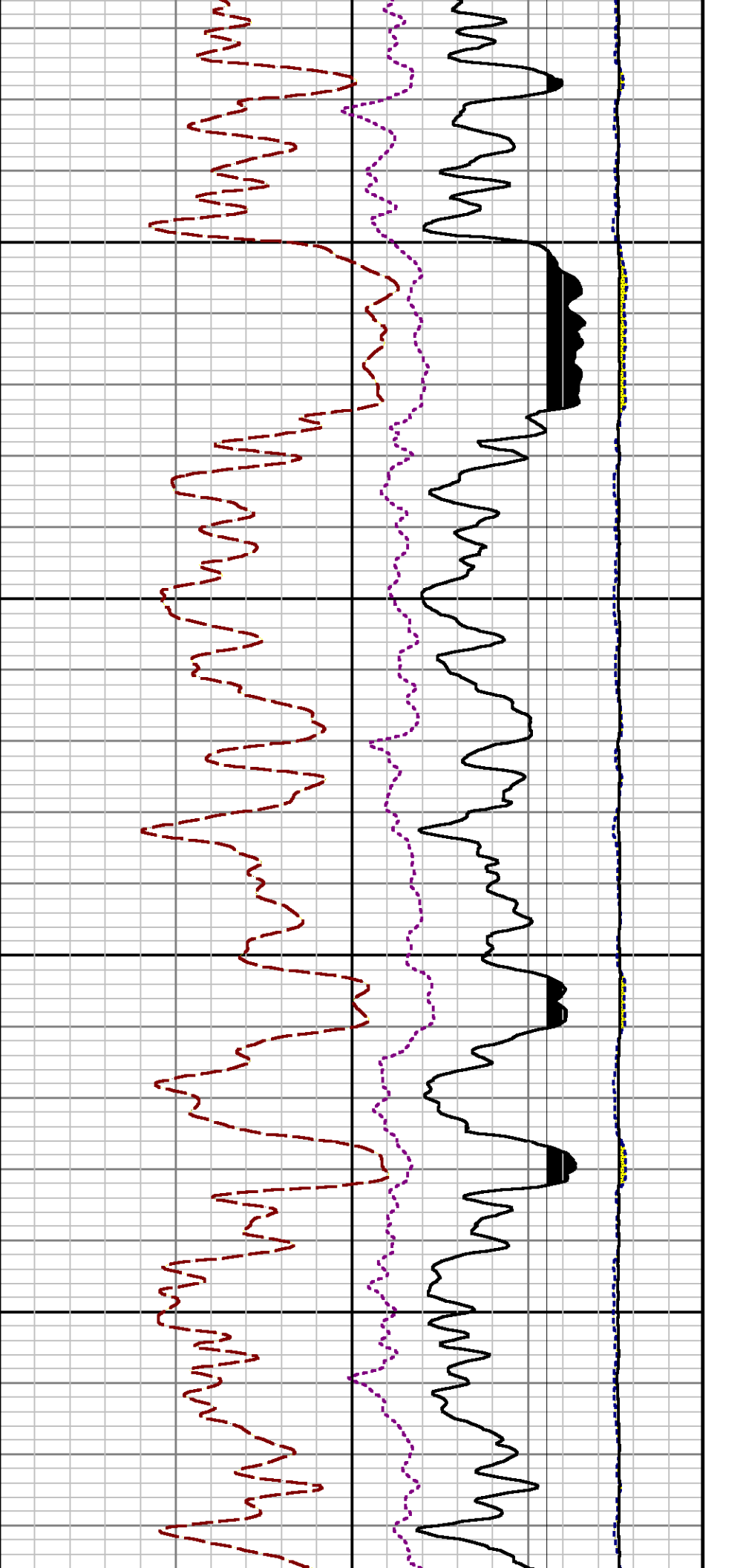
4300

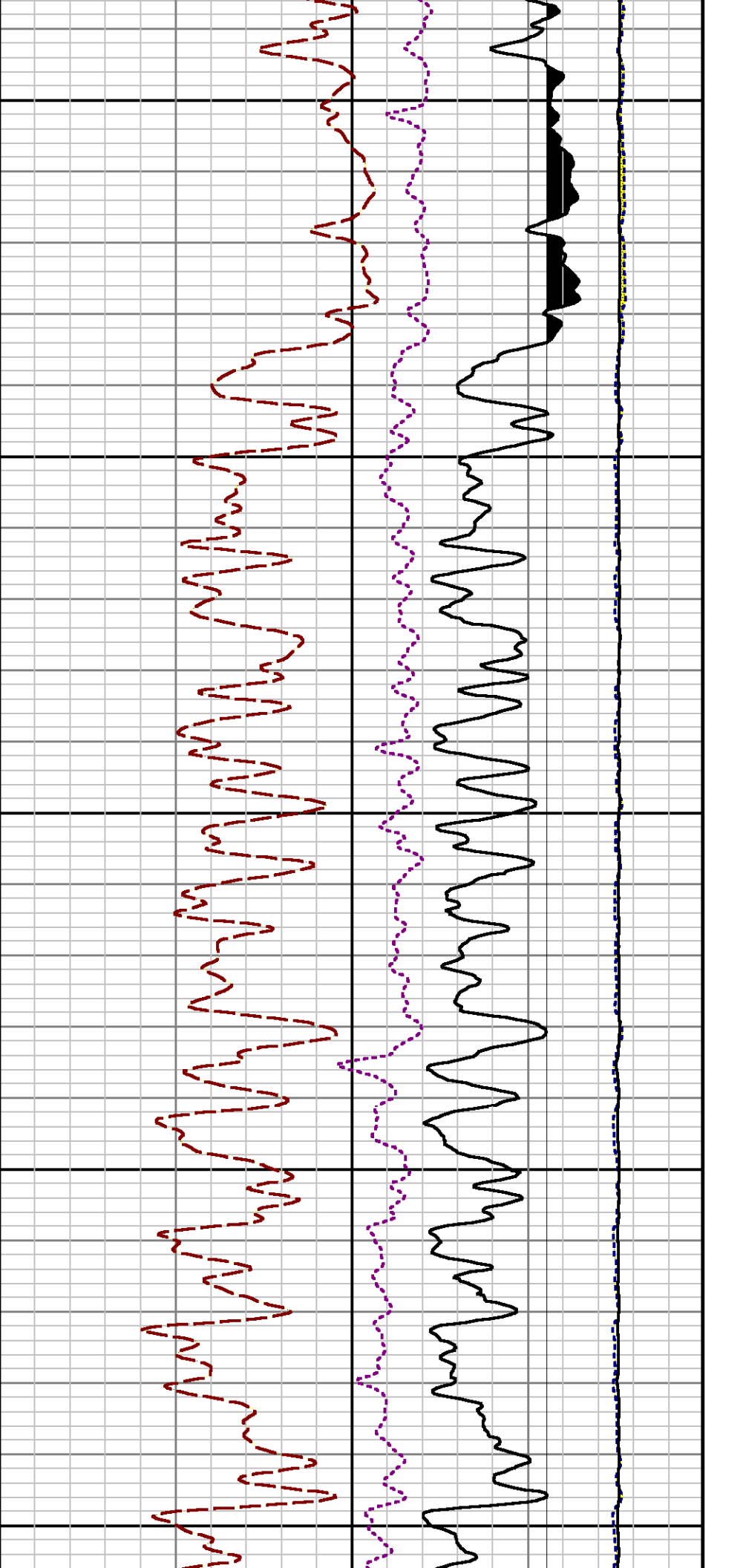
4400





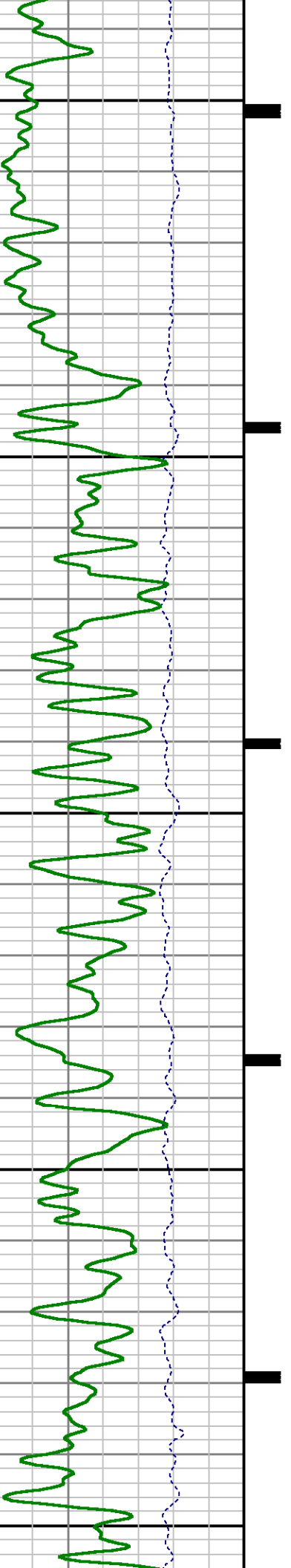


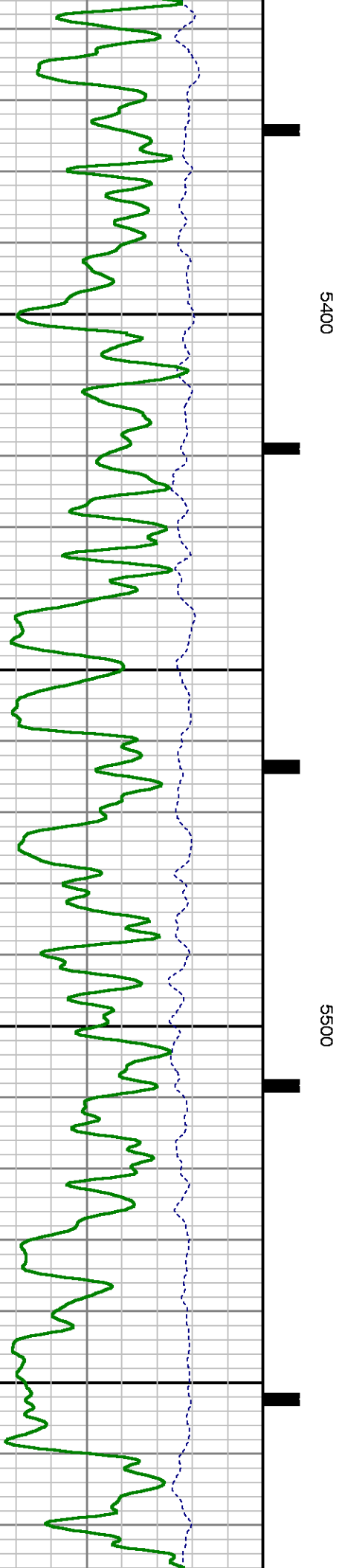
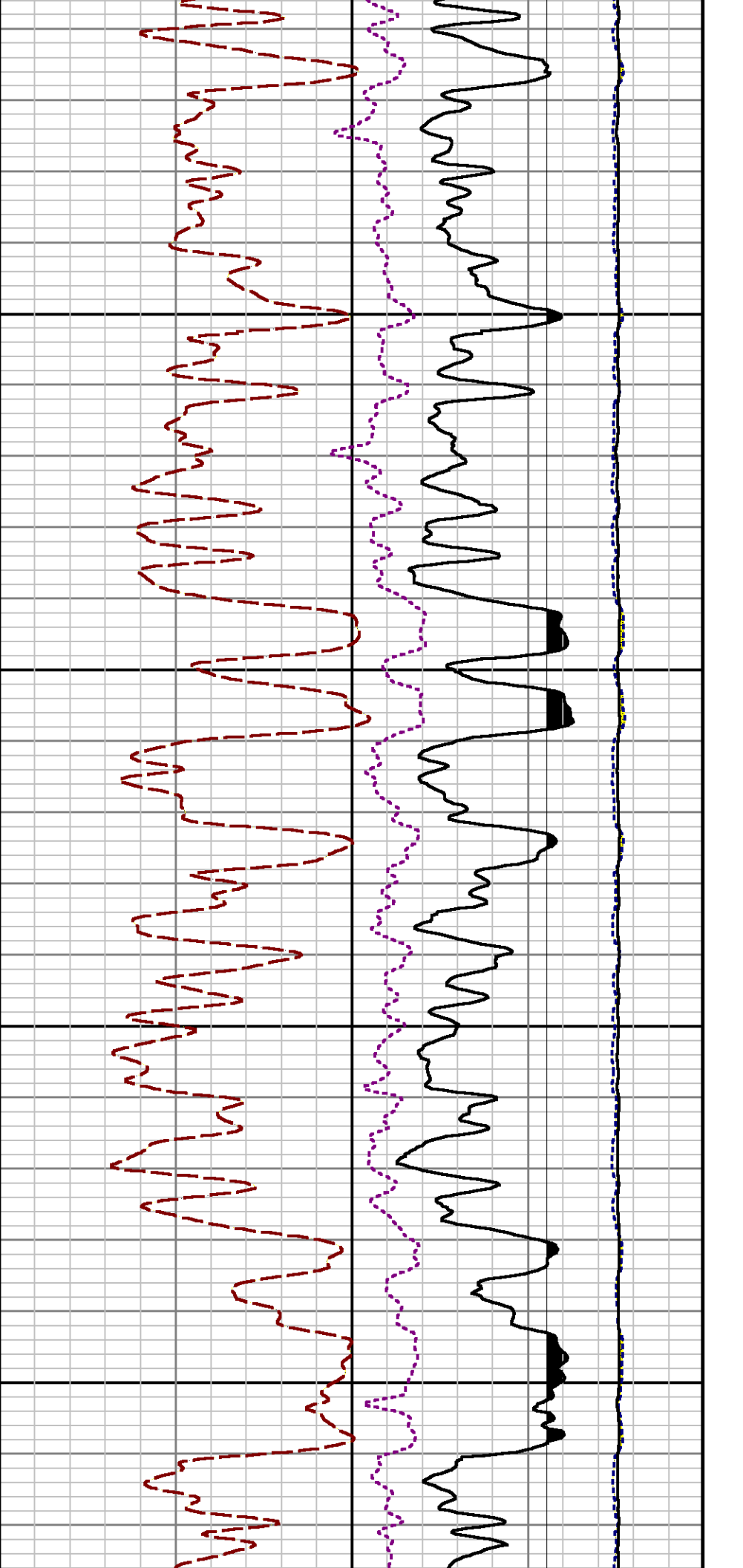


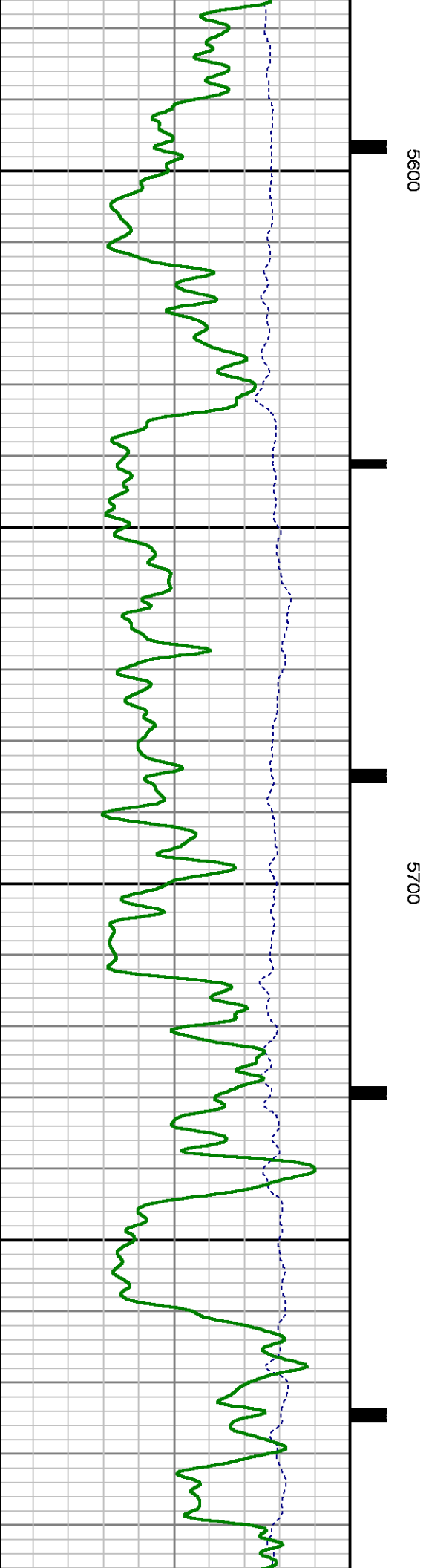
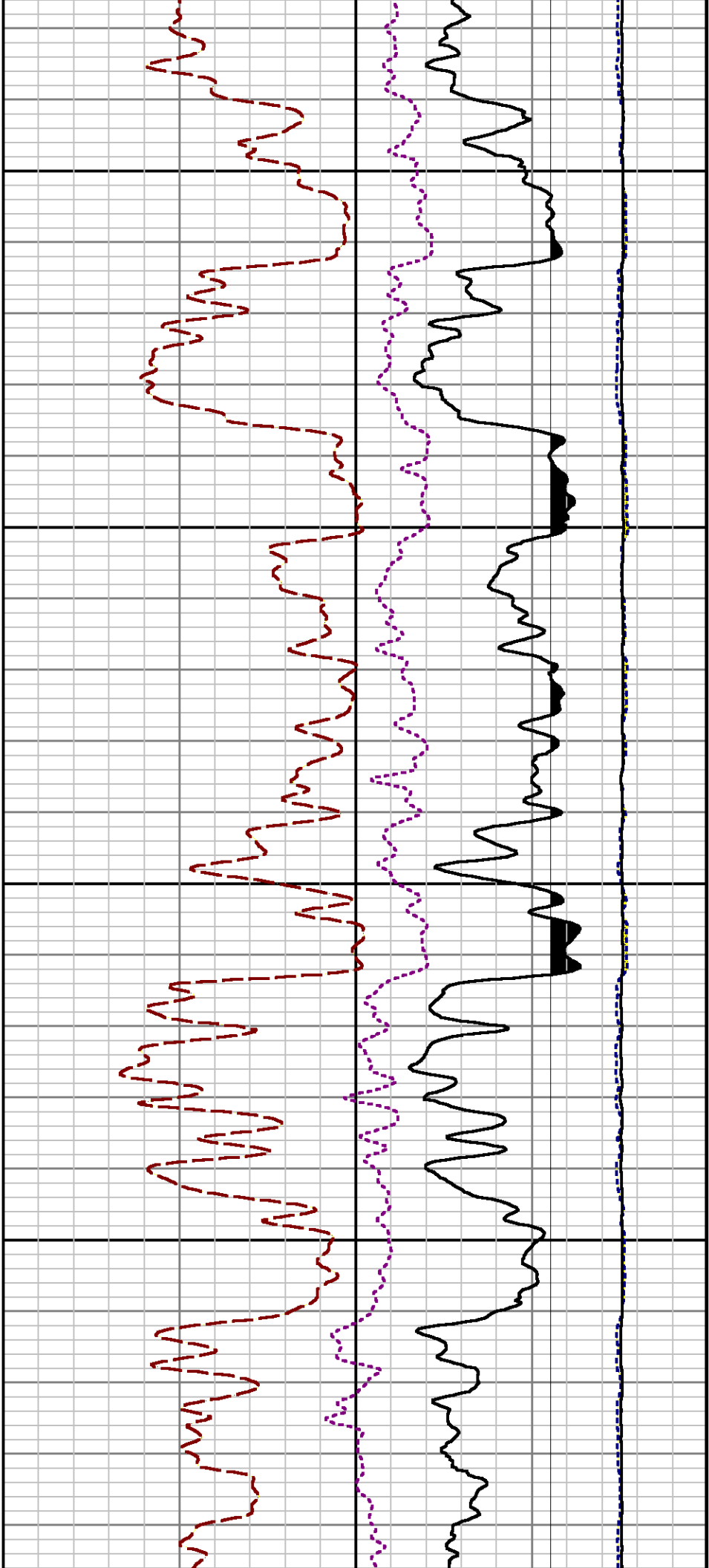


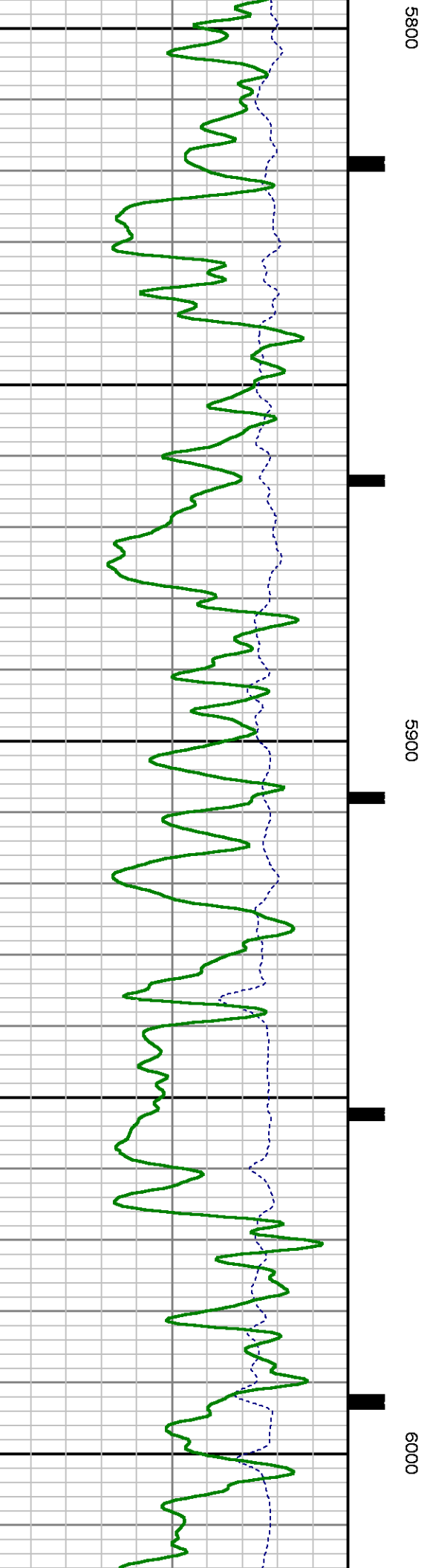
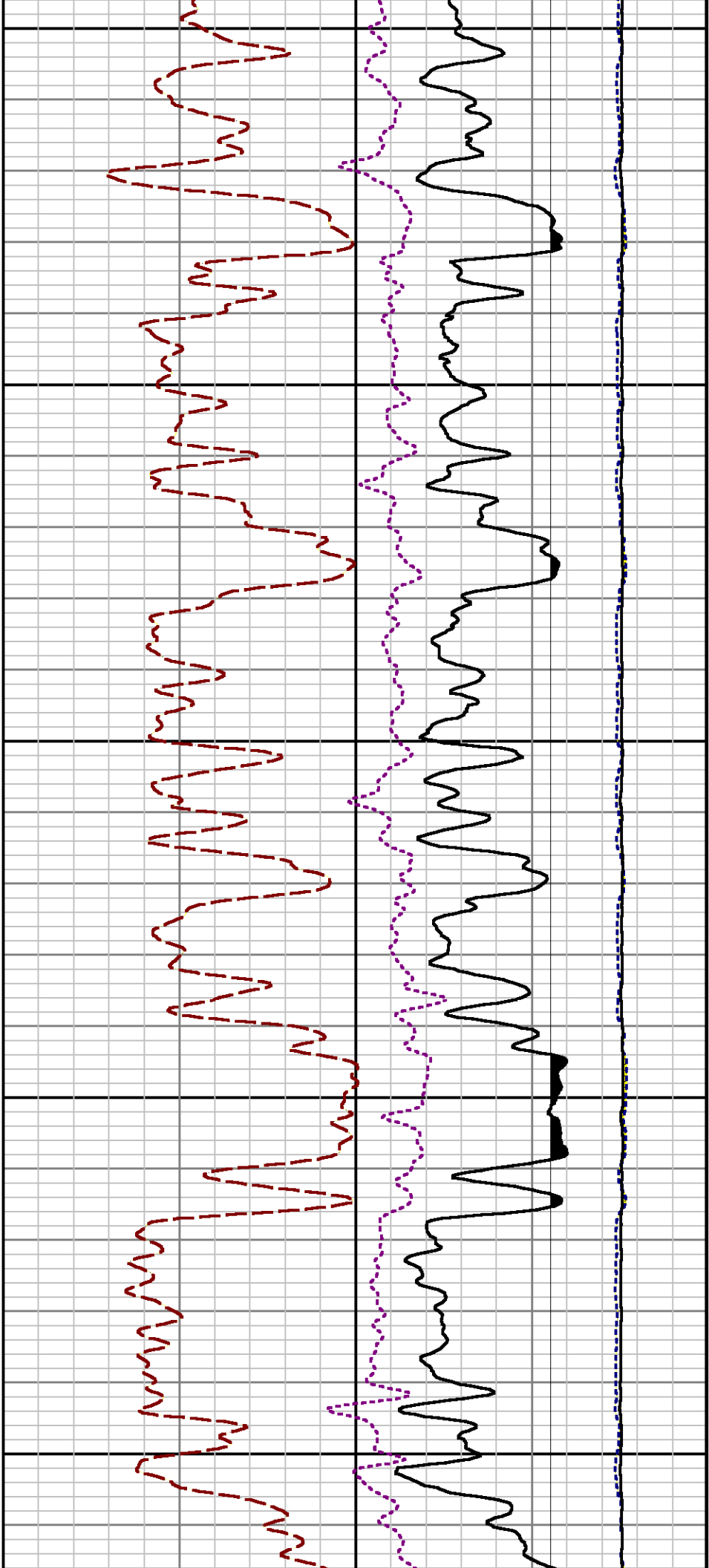
5200

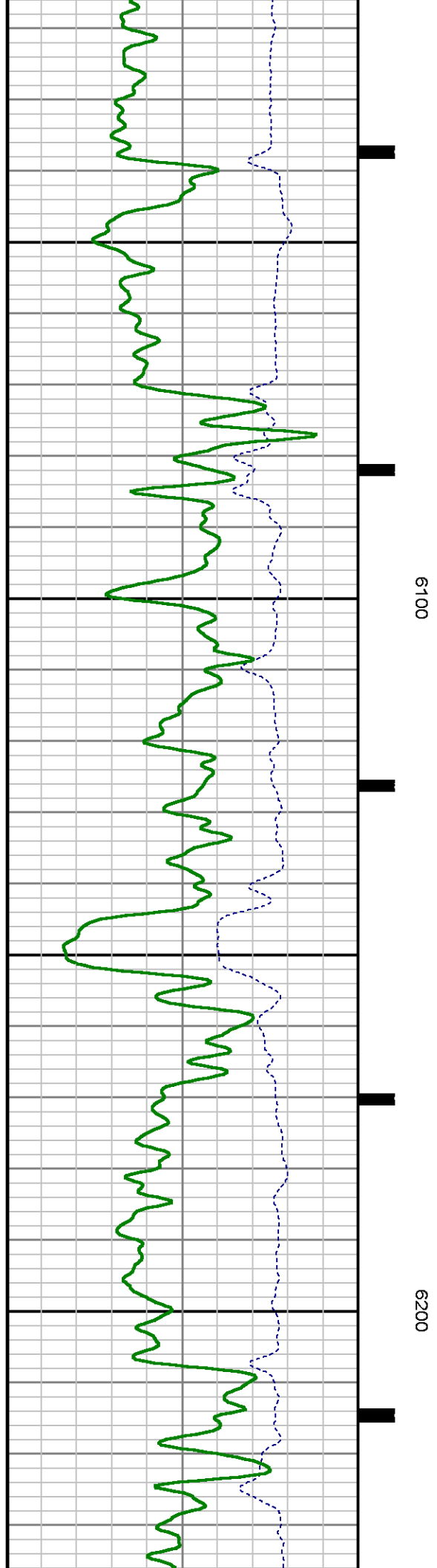
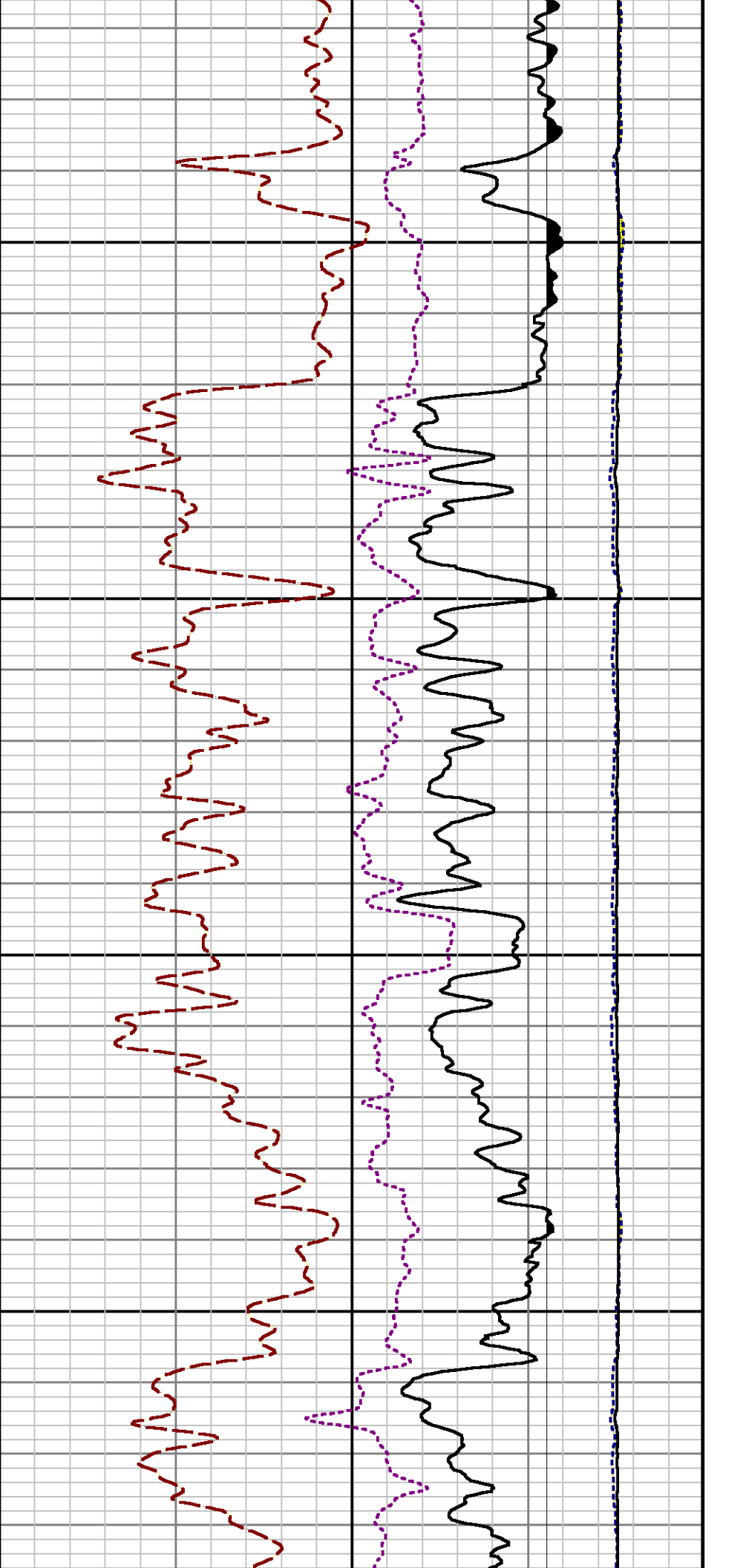
5300

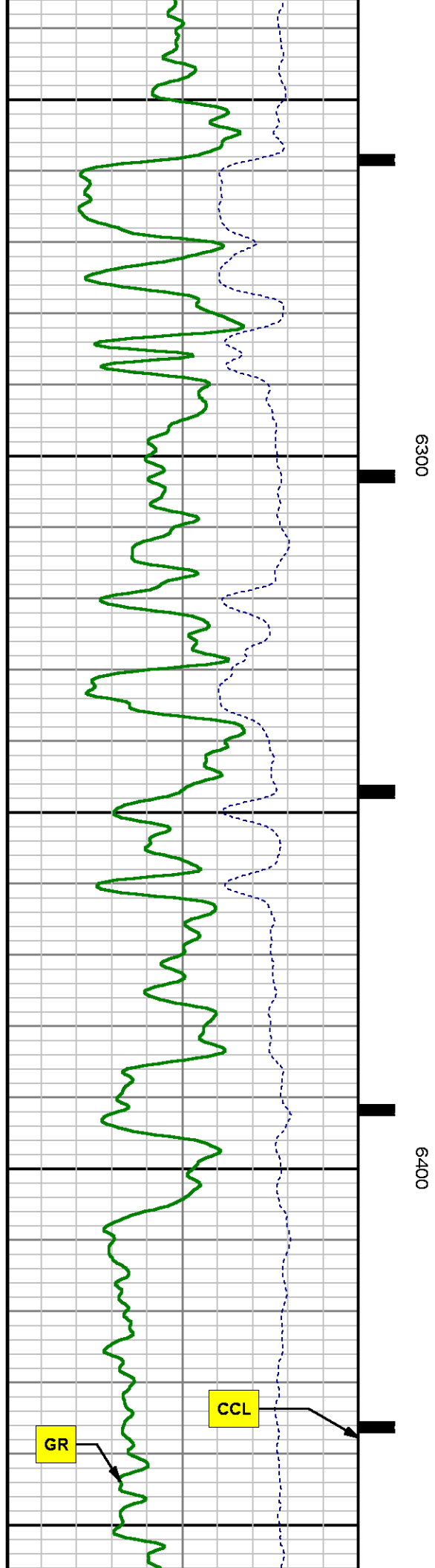
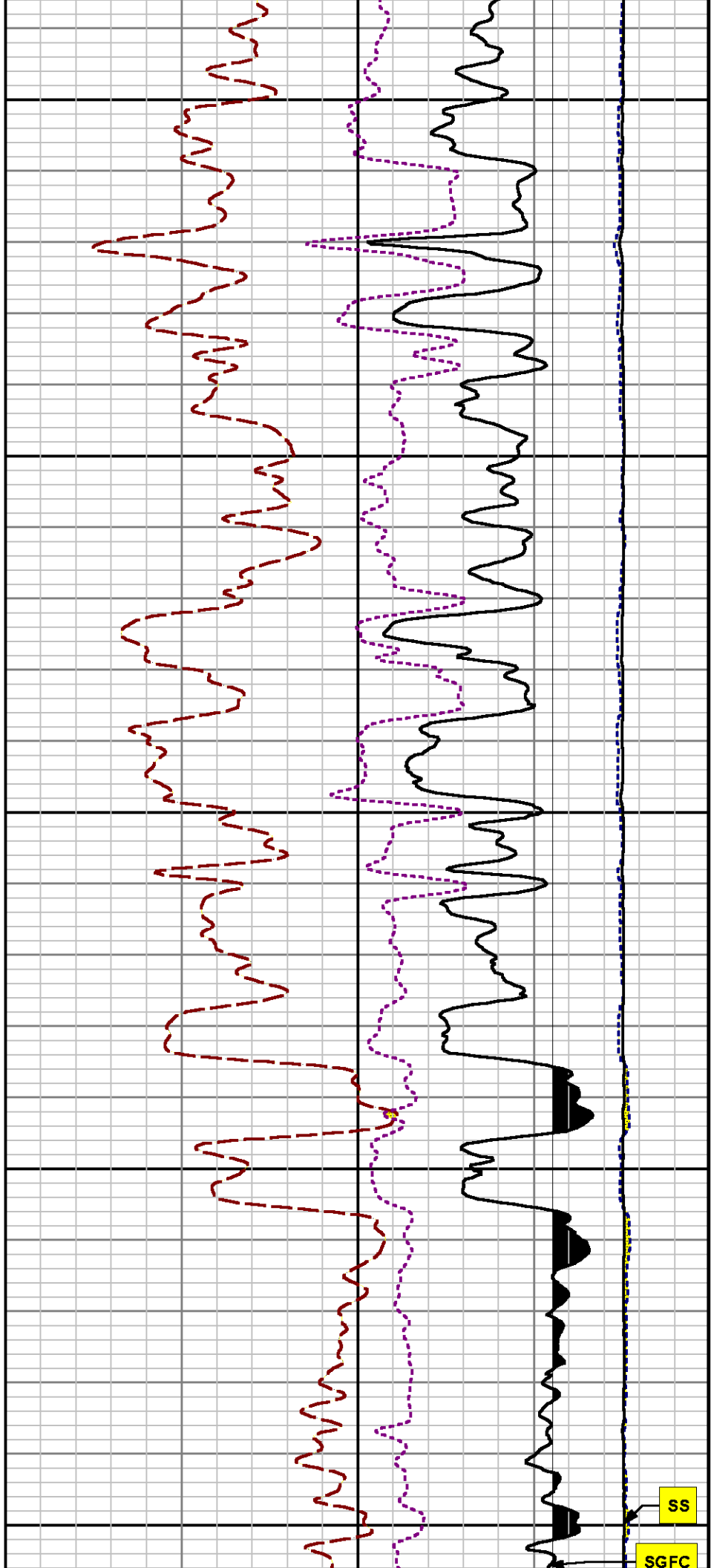


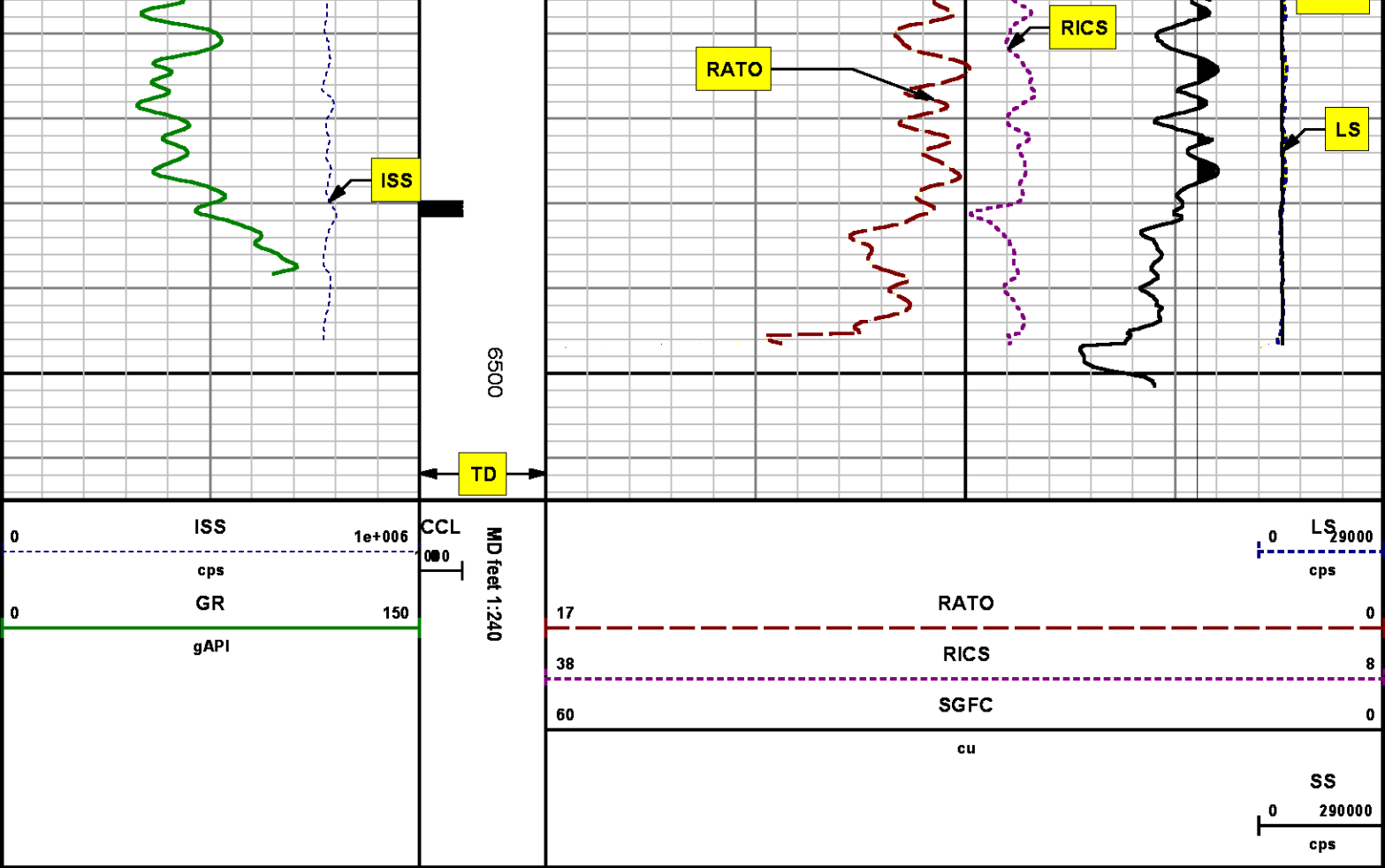












*REPEAT SECTION
PNC 3-D MODE*

SPL PROCESSING

MEASUREMENT TYPE	PARAMETER	VALUE	UNITS	TOP	BOTTOM
PNC Porosity	Borehole	Cased		5684.500	6017.750
PNC Porosity	Borehole Size	8.750	inch	5684.500	6017.750
PNC Porosity	Casing Size	4.500	inch	5684.500	6017.750
PNC Porosity	Gas Filled	Non Gas Filled		5684.500	6017.750
PNC Porosity	Matrix	Sandstone		5684.500	6017.750
TPS Pressure	Temperature Corr. Source	Fixed (72.00)	degF	5684.500	6017.750

DEPTH OFFSETS

(for Acquired Curves)

SERIES	DEPTH OFFSET	ACQUIRED CURVES
8248ED	-26.519	FLTM
8248ED	-24.519	CCL CHV
2812LA	-21.969	GR
8281XA	-12.702	HVC3Q0 SEQ3 AMA3 AML3 BKX CXS CPT3Q0 CPT3Q2 CPT3Q3 CPT3Q4 ET3 IXS MCS3 MCS3Q0 QCAL3 RGN3 RICX SDA3 SDL3 SGA3 SGL3 STA3 XS ASPEC3 AMB3 AMF3 CHF3 IXSC IXSN RATO23 RICXC RIN13C RIN23 RIN23C SD3D SG3D SGB3 SGF3 WDT3 CXSR IXSR XSR RICXR
8281XA	-12.291	HVC2Q0 SEQ2 AMA2 AMB2 AMF2 AML2 BKL CHF2 CLS CPT2Q0 CPT2Q2 CPT2Q3 CPT2Q4 ET2 ILS LS MCS2 MCS2Q0 QCAL2 RGN2 RICL RONE23 RTWO23 SDA2 SDL2 SGA2 SGB2 SGF2 SGK2 SGL2 STA2 ASPEC2 ILSC ILSN WDT2 RICLC CLSR ILSR LSR RICLR
8281XA	-12.041	CPRS HVC1Q0 MV SEQ SEQ1 AMA1 AMB1 AME1 AMF1 AML1 BKS CHF1 CSS CORB CORF CPT1Q0 CPT1Q2 CPT1Q2A CPT1Q2B CPT1Q2C CPT1Q3 CPT1Q4 CPT1Q5 ET1 G1 G2 GE1S GE2S ISS MCS1 MCS1Q0 QA1 QCAL1 QM1 RATO RATO13 RBOR RGN1 RICS RIN RONE RPOR RTWO RIN13 RONE13 RTWO13 SALB SC1 SDA1 SDL1 SGA1 SGB1 SGBC SGE1 SGF1 SGFC SGK1 SGL1 SS SS2 STA1 PD1S PD2S PD3S MD1S MD2S MD3S DG1S DG2S DG3S PD1M PD2M PD3M MD1M MD2M MD3M DG1M DG2M DG3M MVS MA MVM FILV IAM TA PVM PVS IAS SSTAT QPD1 QPD2 QPD3 QMD1 QMD2 QMD3 QDG1 QDG2 QDG3 QMA QTA QFILV QMV QPV QIA DERR DCNT QPK1 QSA1 PKS1 ASPEC1 H0C FE2XC ISSC RINC ISSN RDEN WDT1 RICSC CSSR G1R G2R ISSR SSR SS2R RATOR RATO13R RBORR RICSR RINR RIN13R RONE RPORR RTWOR
8255XA	-0.792	PTFS PTMS
8255XA	-0.775	SPF1 SPFQ TSCP TSDP
8255XA	0.000	DTEM TEMP TNF
SYSTEM	0.000	TEN TTEN

Company : WPX ENERGY

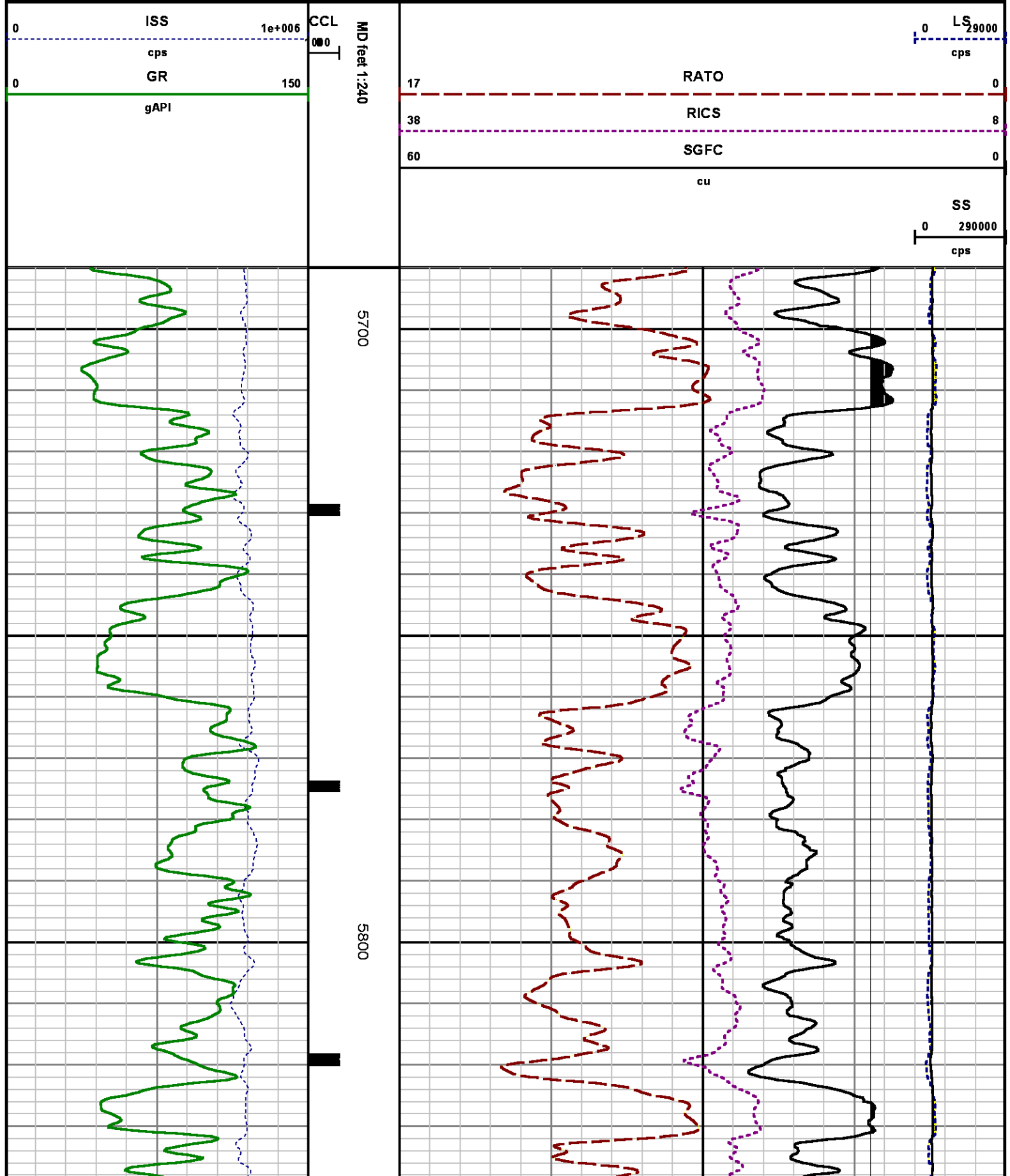
Well : PA 311-7

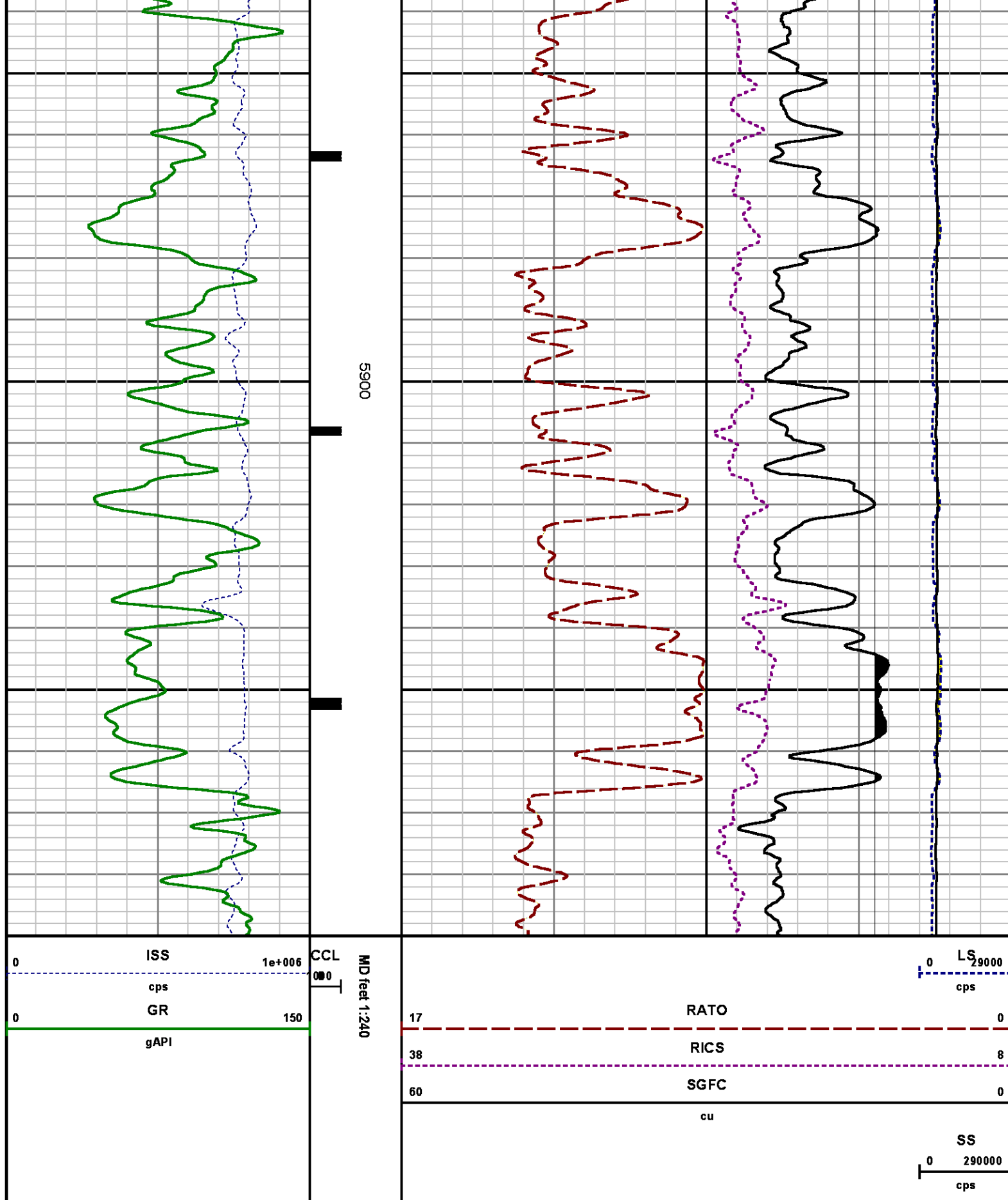
File Name : d:\welldata\wpx\pa 311-7\311rpm\repeat.xtf

Mode : PlotMgr 5.4.504

Interval : 5690.00 - 5990.00 feet UP

Created : 5/3/2014 10:53:56 AM





CALIBRATION SUMMARY

GAMMA RAY

Calibration File: C:\case\calver\GR\38219.cal

CALIBRATION SUMMARY

DATE/TIME PERFORMED: Sat Apr 19 16:31:28 2014 TOOL SERIES: 2812LA ASSET: 382 SEQ: 19

Calibrator #	Background [cps]	Calibrator On [cps]	Multiplicative	Background [api]	Calibrator On [api]	Differential [api]
S2K	51.88	260.02	1.009	52.34	262.34	210.00

Verification File: C:\case\calver\GR\38219.VP

PRIMARY VERIFICATION

DATE/TIME PERFORMED: Sat Apr 19 16:38:08 2014 TOOL SERIES: 2812LA ASSET: 382 SEQ: 19

Calibrator #	Background [cps]	Calibrator On [cps]	Multiplicative	Background [api]	Calibrator On [api]	Differential [api]
S2K WA612	51.54	263.60	1.009	52.00	265.95	213.95

PNC

Calibration File: C:\case\calver\PNC\55528.cal

PNC 3D CALIBRATION SUMMARY

DATE/TIME PERFORMED: Mon Apr 28 09:59:59 2014 TOOL SERIES: 8281XA ASSET: 555 SEQ: 28

Calibrator #	Source #
2437XB GJSHOP	8281AA 11765054

	ISS	Mtr Vlt (V)	SS Gain	LS Gain	XLS Gain	EA Temp (degF)	Sync Delay (usec)	RCAL
Raw Data	811508	121.00	2347.00	2278.00	2241.00	110.62	7.00	0.9846
Interpolated	1300000	143.31	2318.28	2276.39	2237.74			

	ISS	BKS	BKL	BKX	SGA1	SDA1	SGA2	SDA2
Raw Data	811508	6877.25	1084.60	148.19	25.74	0.14	24.34	0.28
					25.35 26.40	0.00 0.20	23.60 24.80	0.00 0.40

	ISS	ILS	IXS	SS	SS2	LS	CSS	CLS
Raw Data	811508	173131.64	27245.19	91206.62	32486.00	8514.36	55168.79	13602.94
Fit Quality %		1.06	1.20	1.11	1.05	1.06	0.97	1.04

	ISS	RBOR	RIN ISS/ILS	RIN13 ISS/IXS	RICS ISS/CSS	RATO SS/LS	RTWO SS2/LS	RONE CSS/CLS
Raw Data	811508	1.43	4.69	29.79	14.71	10.71	3.82	4.06
		1.42 1.45	3.55 5.52	22.20 32.70	10.99 16.34	10.06 11.10	3.57 3.95	3.76 4.22
Fit Quality %		0.11	0.28	0.24	0.17	0.06	0.03	0.05
Reduced	1414078	1.43	4.70	29.86	14.75	10.71	3.82	4.05
		1.42 1.45	4.33 5.52	27.60 32.70	13.70 16.34	10.06 11.10	3.57 3.95	3.76 4.22

TEMPERATURE

Calibration File: C:\case\calver\TEMP\77456813.cal

CALIBRATION SUMMARY

DATE/TIME PERFORMED: FEB 13 2014

TOOL SERIES: 8255XA ASSET: 774568 SEQ: 13

	T(0)	T(1)	T(2)	T(3)	T(4)	T(5)
Coefficients	-9.274653e+000	1.055639e-001	2.143764e-006	-2.782846e-010	0.000000e+000	0.000000e+000

TOOL DIAGRAM

OTA SHORT CABLE HEAD

PCM POWER SUPPLY

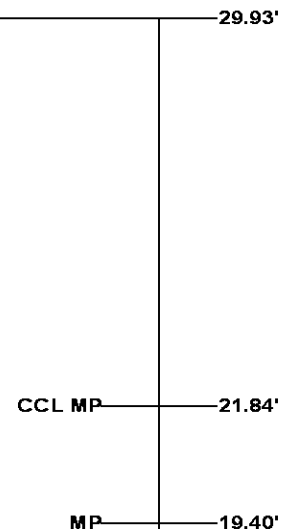
Series 8250EA
Mnemonic PCM
Diameter 1.70"
Weight 18.00 lb
Length 3.86'
Temp Rating 350.00 °F

TELEMETRY / CCL

Series 8248EA
Mnemonic PCM
Diameter 1.70"
Weight 20.00 lb
Length 4.46'
Measure Point 1.00' CCL MP
Temp Rating 350.00 °F
Press Rating 15000.00 PSI

SONDEX GAMMA RAY

Series 2812LA
Mnemonic SNDX
Diameter 1.69"



RESERVOIR PERFORMANCE MONITOR

Series	8281XA
Mnemonic	RPM
Diameter	1.70"
Weight	75.00 lb
Length	18.58'
Measure Point	9.49' SS DETECTOR
Measure Point	9.72' LS DETECTOR
Measure Point	12.69' XLS DETECTOR
Temp Rating	350.00 °F
Press Rating	20000.00 PSI

XLS DETECTOR 12.78'

LS DETECTOR 9.80'

SS DETECTOR 9.58'

0.00'

Total Length: 29.93'
Total Weight: Not Available
Max Diameter: 0' 1.70"

**Baker Atlas***CASE***Company**

WPX ENERGY

Well

PA 311-7

Field

PARACHUTE

County

GARFIELD

State

COLORADO

File No:

CH085276

API No:

05045222260000

Location

SHL: 741' FSL & 755' FWL 6 7S 95W

BHL: 148' FNL & 593' FWL (NWNW)7 7S 95W

Elevations

KB 5179 ft

DF

GL 5153 ft

6 7S 95W

PA 14-6 PAD

NABORS 574

SEC 7

TWP 7S

RGE 95W