



**Weatherford<sup>®</sup>**

## **Drilling Services**

---

## **Proposal**

---



PAD 21B

WELL: 14/15-1-21

GARFIELD COUNTY, CO

WELL FILE: **PLAN 1**

JUNE 22, 2011

---

**Weatherford International, Ltd.**  
410 17<sup>th</sup> Street, Suite 400  
Denver, CO 80202 USA  
+1.303.825.6558 Main  
[www.weatherford.com](http://www.weatherford.com)



Project: Garfield County, CO  
Site: Pad 21B  
Well: 14/15-1-21  
GL: 6932.00  
KB: 6952.00



Azimuths to True North  
Magnetic North: 10.16°

Magnetic Field  
Strength: 52364nT  
Dip Angle: 65.84°  
Date: 6/21/2011  
Model: IGRF2010

TOTAL CORRECTION TO TRUE NORTH 10.16°

#### SECTION DETAILS

Sec	MD	Inc	Azi	TVD	+N/-S	+E/-W	DLeg	TFace	VSec	Target
1	0.00	0.00	1.46	0.00	0.00	0.00	0.00	0.00	0.00	
2	200.00	0.00	1.46	200.00	0.00	0.00	0.00	0.00	0.00	
3	1200.00	30.00	1.46	1154.93	255.79	6.52	3.00	1.46	255.87	
4	4599.76	30.00	1.46	4099.21	1955.12	49.81	0.00	0.00	1955.75	
5	5599.76	0.00	1.46	5054.14	2210.91	56.32	3.00	180.00	2211.63	
6	7912.62	0.00	1.46	7367.00	2210.91	56.32	0.00	0.00	2211.63	PBHL 1-21

#### FIELD DETAILS

Garfield County, CO

Geodetic System: US State Plane Coordinate System 1983  
Ellipsoid: GRS 1980  
Zone: Colorado, Central Zone  
Magnetic Model: IGRF2010  
System Datum: Mean Sea Level  
Local North: True North

#### SITE DETAILS

PAD 21B

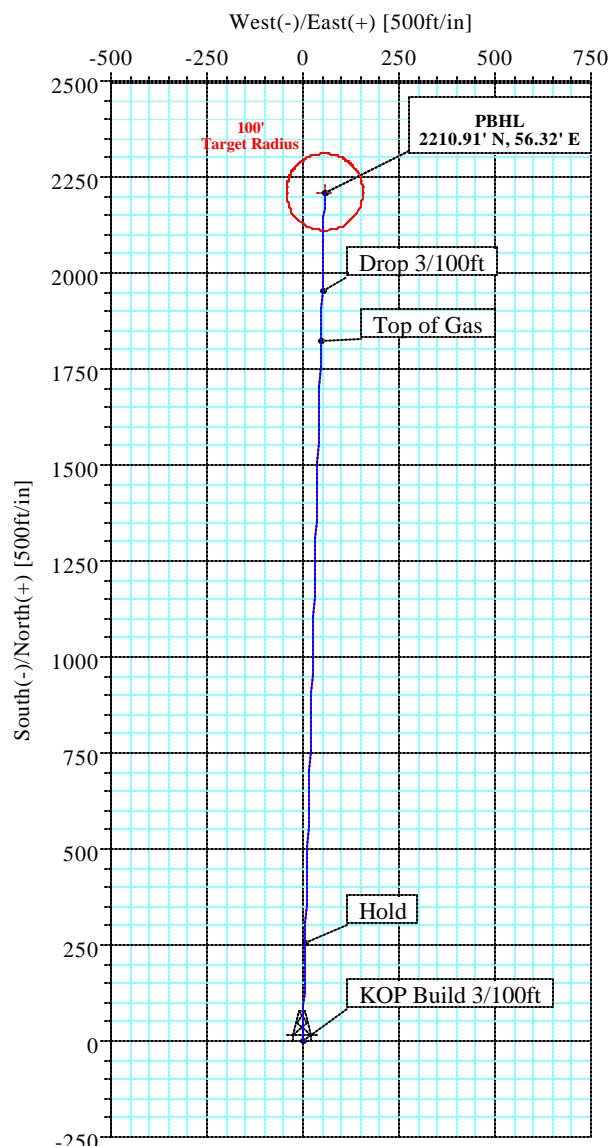
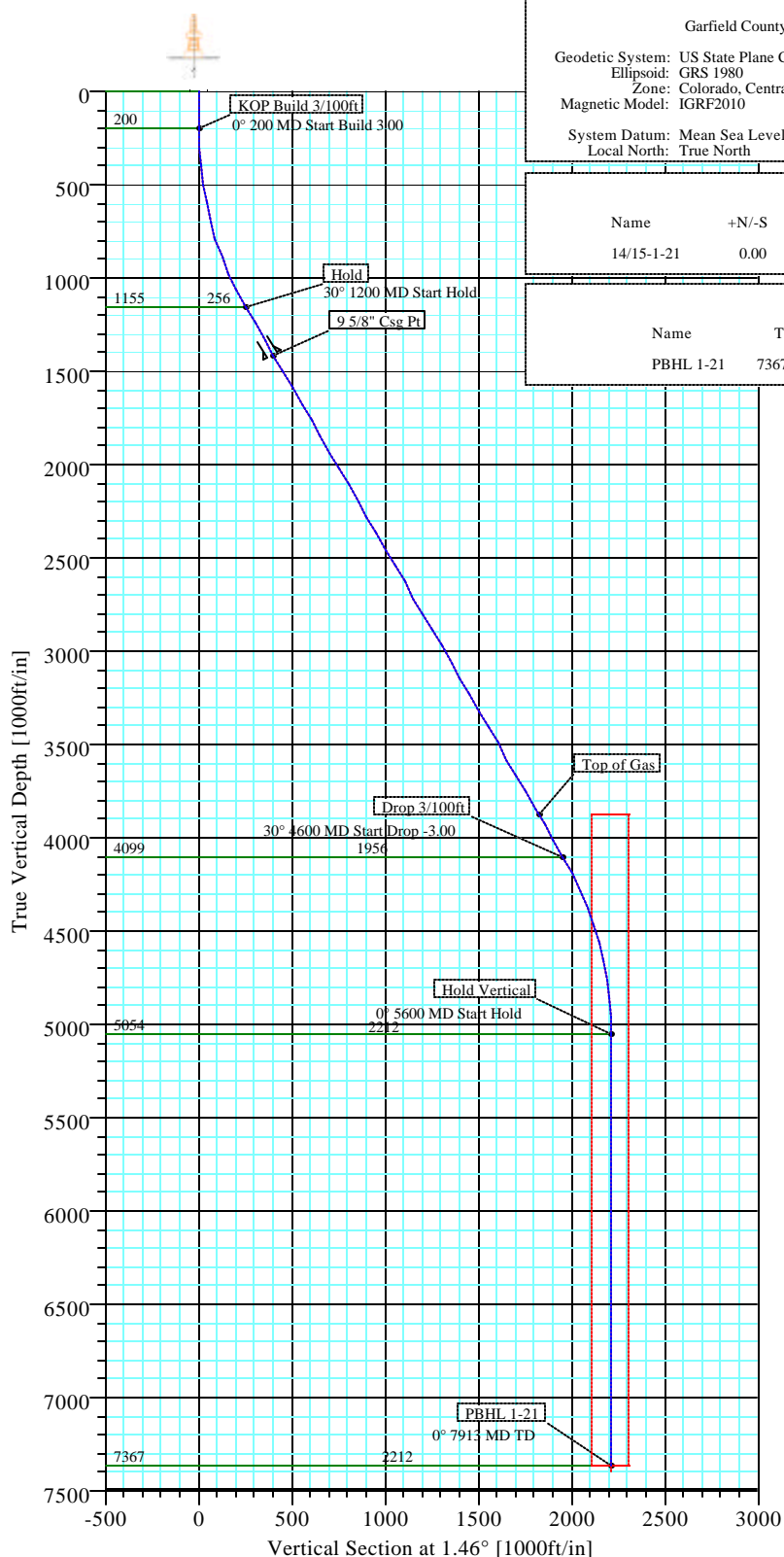
Site Centre Northing: 1618762.06  
Easting: 2420967.93  
Ground Level: 6932.00  
Positional Uncertainty: 0.00  
Convergence: -1.29

#### WELL DETAILS

Name	+N/-S	+E/-W	Northing	Easting	Latitude	Longitude	Slot
14/15-1-21	0.00	0.00	1618762.06	2420967.93	39°30'51.527N	107°33'09.261W	N/A

#### TARGET DETAILS

Name	TVD	+N/-S	+E/-W	Northing	Easting	Shape
PBHL 1-21	7367.00	2210.91	56.32	1620971.13	2421074.18	Circle (Radius: 100)



Plan: Plan #1 (14/15-1-21/Original)

Created By: L. Winchell

Date: 6/21/2011



# Weatherford International, Inc.

## Directional Plan Report



<b>Company:</b> DEJOUR ENERGY INC	<b>Date:</b> 6/21/2011	<b>Time:</b> 16:00:12	<b>Page:</b> 1
<b>Field:</b> Garfield County, CO	<b>Co-ordinate(NE) Reference:</b> Well: 14/15-1-21, True North		
<b>Site:</b> PAD 21B	<b>Vertical (TVD) Reference:</b> SITE 6952.0		
<b>Well:</b> 14/15-1-21	<b>Section (VS) Reference:</b> Well (0.00N,0.00E,1.46Azi)		
<b>Wellpath:</b> Original	<b>Survey Calculation Method:</b> Minimum Curvature	<b>Db:</b> Sybase	

**Field:** Garfield County, CO

**Map System:** US State Plane Coordinate System 1983  
**Geo Datum:** GRS 1980  
**Sys Datum:** Mean Sea Level

**Map Zone:** Colorado, Central Zone  
**Coordinate System:** Well Centre  
**Geomagnetic Model:** IGRF2010

**Site:** PAD 21B

<b>Site Position:</b>	<b>Northing:</b> 1618762.06 ft	<b>Latitude:</b> 39 30 51.527 N
<b>From:</b> Map	<b>Easting:</b> 2420967.93 ft	<b>Longitude:</b> 107 33 9.261 W
<b>Position Uncertainty:</b> 0.00 ft		<b>North Reference:</b> True
<b>Ground Level:</b> 6932.00 ft		<b>Grid Convergence:</b> -1.29 deg

**Well:** 14/15-1-21

**Slot Name:**

<b>Well Position:</b> +N/-S 0.00 ft	<b>Northing:</b> 1618762.06 ft	<b>Latitude:</b> 39 30 51.527 N
+E/-W 0.00 ft	<b>Easting:</b> 2420967.93 ft	<b>Longitude:</b> 107 33 9.261 W
<b>Position Uncertainty:</b> 0.00 ft		

**Wellpath:** Original

<b>Current Datum:</b> SITE	<b>Height</b> 6952.00 ft	<b>Drilled From:</b> Surface
<b>Magnetic Data:</b> 6/21/2011		<b>Tie-on Depth:</b> 0.00 ft
<b>Field Strength:</b> 52364 nT		<b>Above System Datum:</b> Mean Sea Level
<b>Vertical Section:</b> Depth From (TVD)		<b>Declination:</b> 10.16 deg
ft	+N/-S ft	<b>Mag Dip Angle:</b> 65.84 deg
	+E/-W ft	<b>Direction</b> deg
0.00	0.00	1.46

**Plan:** Plan #1

**Date Composed:** 6/21/2011  
**Version:** 1  
**Tied-to:** From Surface

**Principal:** Yes

### Plan Section Information

MD ft	Incl deg	Azim deg	TVD ft	+N/-S ft	+E/-W ft	DLS deg/100ft	Build deg/100ft	Turn deg/100ft	TFO deg	Target
0.00	0.00	1.46	0.00	0.00	0.00	0.00	0.00	0.00	0.00	
200.00	0.00	1.46	200.00	0.00	0.00	0.00	0.00	0.00	0.00	
1200.00	30.00	1.46	1154.93	255.79	6.52	3.00	3.00	0.00	1.46	
4599.76	30.00	1.46	4099.21	1955.12	49.81	0.00	0.00	0.00	0.00	
5599.76	0.00	1.46	5054.14	2210.91	56.32	3.00	-3.00	0.00	180.00	
7912.62	0.00	1.46	7367.00	2210.91	56.32	0.00	0.00	0.00	0.00	PBHL 1-21

### Survey

MD ft	Incl deg	Azim deg	TVD ft	N/S ft	E/W ft	VS ft	DLS deg/100ft	MapN ft	MapE ft	Comment
0.00	0.00	1.46	0.00	0.00	0.00	0.00	0.00	1618762.06	2420967.93	
100.00	0.00	1.46	100.00	0.00	0.00	0.00	0.00	1618762.06	2420967.93	
200.00	0.00	1.46	200.00	0.00	0.00	0.00	0.00	1618762.06	2420967.93	KOP Build 3/100ft
300.00	3.00	1.46	299.95	2.62	0.07	2.62	3.00	1618764.68	2420968.05	
400.00	6.00	1.46	399.63	10.46	0.27	10.46	3.00	1618772.51	2420968.43	
500.00	9.00	1.46	498.77	23.51	0.60	23.51	3.00	1618785.55	2420969.06	
600.00	12.00	1.46	597.08	41.72	1.06	41.74	3.00	1618803.75	2420969.93	
700.00	15.00	1.46	694.31	65.06	1.66	65.08	3.00	1618827.06	2420971.05	
800.00	18.00	1.46	790.18	93.44	2.38	93.48	3.00	1618855.43	2420972.42	
900.00	21.00	1.46	884.43	126.81	3.23	126.85	3.00	1618888.77	2420974.02	
1000.00	24.00	1.46	976.81	165.06	4.20	165.12	3.00	1618926.99	2420975.86	
1100.00	27.00	1.46	1067.06	208.09	5.30	208.16	3.00	1618969.98	2420977.93	
1200.00	30.00	1.46	1154.93	255.79	6.52	255.87	3.00	1619017.64	2420980.22	Hold
1300.00	30.00	1.46	1241.53	305.77	7.79	305.87	0.00	1619067.58	2420982.62	
1400.00	30.00	1.46	1328.13	355.76	9.06	355.87	0.00	1619117.52	2420985.02	



# Weatherford International, Inc.

## Directional Plan Report



**Company:** DEJOUR ENERGY INC  
**Field:** Garfield County, CO  
**Site:** PAD 21B  
**Well:** 14/15-1-21  
**Wellpath:** Original

**Date:** 6/21/2011 **Time:** 16:00:12 **Page:** 2  
**Co-ordinate(NE) Reference:** Well: 14/15-1-21, True North  
**Vertical (TVD) Reference:** SITE 6952.0  
**Section (VS) Reference:** Well (0.00N,0.00E,1.46Azi)  
**Survey Calculation Method:** Minimum Curvature **Db:** Sybase

### Survey

MD ft	Incl deg	Azim deg	TVD ft	N/S ft	E/W ft	VS ft	DLS deg/100ft	MapN ft	MapE ft	Comment
1500.00	30.00	1.46	1414.74	405.74	10.34	405.87	0.00	1619167.47	2420987.43	9 5/8" Csg Pt
1600.00	30.00	1.46	1501.34	455.72	11.61	455.87	0.00	1619217.41	2420989.83	
1700.00	30.00	1.46	1587.94	505.71	12.88	505.87	0.00	1619267.35	2420992.23	
1800.00	30.00	1.46	1674.54	555.69	14.16	555.87	0.00	1619317.29	2420994.63	
1900.00	30.00	1.46	1761.15	605.68	15.43	605.87	0.00	1619367.24	2420997.04	
2000.00	30.00	1.46	1847.75	655.66	16.70	655.87	0.00	1619417.18	2420999.44	
2100.00	30.00	1.46	1934.35	705.64	17.98	705.87	0.00	1619467.12	2421001.84	
2200.00	30.00	1.46	2020.96	755.63	19.25	755.87	0.00	1619517.06	2421004.24	
2300.00	30.00	1.46	2107.56	805.61	20.52	805.87	0.00	1619567.00	2421006.64	
2400.00	30.00	1.46	2194.16	855.60	21.80	855.87	0.00	1619616.95	2421009.05	
2500.00	30.00	1.46	2280.76	905.58	23.07	905.87	0.00	1619666.89	2421011.45	
2600.00	30.00	1.46	2367.37	955.56	24.34	955.87	0.00	1619716.83	2421013.85	
2700.00	30.00	1.46	2453.97	1005.55	25.62	1005.87	0.00	1619766.77	2421016.25	
2800.00	30.00	1.46	2540.57	1055.53	26.89	1055.87	0.00	1619816.72	2421018.66	
2900.00	30.00	1.46	2627.17	1105.51	28.16	1105.87	0.00	1619866.66	2421021.06	
3000.00	30.00	1.46	2713.78	1155.50	29.44	1155.87	0.00	1619916.60	2421023.46	
3100.00	30.00	1.46	2800.38	1205.48	30.71	1205.87	0.00	1619966.54	2421025.86	
3200.00	30.00	1.46	2886.98	1255.47	31.98	1255.87	0.00	1620016.49	2421028.27	
3300.00	30.00	1.46	2973.58	1305.45	33.26	1305.87	0.00	1620066.43	2421030.67	
3400.00	30.00	1.46	3060.19	1355.43	34.53	1355.87	0.00	1620116.37	2421033.07	
3500.00	30.00	1.46	3146.79	1405.42	35.80	1405.87	0.00	1620166.31	2421035.47	
3600.00	30.00	1.46	3233.39	1455.40	37.08	1455.87	0.00	1620216.25	2421037.87	
3700.00	30.00	1.46	3319.99	1505.38	38.35	1505.87	0.00	1620266.20	2421040.28	
3800.00	30.00	1.46	3406.60	1555.37	39.62	1555.87	0.00	1620316.14	2421042.68	
3900.00	30.00	1.46	3493.20	1605.35	40.90	1605.87	0.00	1620366.08	2421045.08	
4000.00	30.00	1.46	3579.80	1655.34	42.17	1655.87	0.00	1620416.02	2421047.48	
4100.00	30.00	1.46	3666.40	1705.32	43.44	1705.87	0.00	1620465.97	2421049.89	
4200.00	30.00	1.46	3753.01	1755.30	44.72	1755.87	0.00	1620515.91	2421052.29	
4300.00	30.00	1.46	3839.61	1805.29	45.99	1805.87	0.00	1620565.85	2421054.69	
4337.40	30.00	1.46	3872.00	1823.98	46.47	1824.57	0.00	1620584.53	2421055.59	Top of Gas
4400.00	30.00	1.46	3926.21	1855.27	47.26	1855.87	0.00	1620615.79	2421057.09	
4500.00	30.00	1.46	4012.81	1905.25	48.54	1905.87	0.00	1620665.73	2421059.49	
4599.76	30.00	1.46	4099.21	1955.12	49.81	1955.75	0.00	1620715.56	2421061.89	
4600.00	30.00	1.46	4099.42	1955.24	49.81	1955.87	0.00	1620715.68	2421061.90	
4700.00	26.99	1.46	4187.29	2002.92	51.02	2003.57	3.01	1620763.32	2421064.19	Drop 3/100ft
4800.00	23.99	1.46	4277.55	2045.94	52.12	2046.61	3.00	1620806.31	2421066.26	
4900.00	20.99	1.46	4369.93	2084.18	53.09	2084.86	3.00	1620844.51	2421068.09	
5000.00	17.99	1.46	4464.19	2117.54	53.94	2118.22	3.00	1620877.84	2421069.70	
5100.00	14.99	1.46	4560.06	2145.91	54.67	2146.61	3.00	1620906.19	2421071.06	
5200.00	11.99	1.46	4657.29	2169.24	55.26	2169.94	3.00	1620929.50	2421072.18	
5300.00	8.99	1.46	4755.61	2187.44	55.72	2188.15	3.00	1620947.69	2421073.06	
5400.00	5.99	1.46	4854.74	2200.47	56.06	2201.19	3.00	1620960.71	2421073.68	
5500.00	2.99	1.46	4954.42	2208.30	56.26	2209.02	3.00	1620968.53	2421074.06	
5599.76	0.00	1.46	5054.14	2210.91	56.32	2211.63	3.00	1620971.13	2421074.18	
5600.00	0.00	1.46	5054.38	2210.91	56.32	2211.63	0.00	1620971.13	2421074.18	Hold Vertical
5700.00	0.00	1.46	5154.38	2210.91	56.32	2211.63	0.00	1620971.13	2421074.18	
5800.00	0.00	1.46	5254.38	2210.91	56.32	2211.63	0.00	1620971.13	2421074.18	
5900.00	0.00	1.46	5354.38	2210.91	56.32	2211.63	0.00	1620971.13	2421074.18	
6000.00	0.00	1.46	5454.38	2210.91	56.32	2211.63	0.00	1620971.13	2421074.18	
6100.00	0.00	1.46	5554.38	2210.91	56.32	2211.63	0.00	1620971.13	2421074.18	
6200.00	0.00	1.46	5654.38	2210.91	56.32	2211.63	0.00	1620971.13	2421074.18	
6300.00	0.00	1.46	5754.38	2210.91	56.32	2211.63	0.00	1620971.13	2421074.18	
6400.00	0.00	1.46	5854.38	2210.91	56.32	2211.63	0.00	1620971.13	2421074.18	



# Weatherford International, Inc.

## Directional Plan Report



<b>Company:</b> DEJOUR ENERGY INC	<b>Date:</b> 6/21/2011	<b>Time:</b> 16:00:12	<b>Page:</b> 3
<b>Field:</b> Garfield County, CO	<b>Co-ordinate(NE) Reference:</b>	Well: 14/15-1-21, True North	
<b>Site:</b> PAD 21B	<b>Vertical (TVD) Reference:</b>	SITE 6952.0	
<b>Well:</b> 14/15-1-21	<b>Section (VS) Reference:</b>	Well (0.00N,0.00E,1.46Azi)	
<b>Wellpath:</b> Original	<b>Survey Calculation Method:</b>	Minimum Curvature	<b>Db:</b> Sybase

### Survey

MD ft	Incl deg	Azim deg	TVD ft	N/S ft	E/W ft	VS ft	DLS deg/100ft	MapN ft	MapE ft	Comment
6500.00	0.00	1.46	5954.38	2210.91	56.32	2211.63	0.00	1620971.13	2421074.18	
6600.00	0.00	1.46	6054.38	2210.91	56.32	2211.63	0.00	1620971.13	2421074.18	
6700.00	0.00	1.46	6154.38	2210.91	56.32	2211.63	0.00	1620971.13	2421074.18	
6800.00	0.00	1.46	6254.38	2210.91	56.32	2211.63	0.00	1620971.13	2421074.18	
6900.00	0.00	1.46	6354.38	2210.91	56.32	2211.63	0.00	1620971.13	2421074.18	
7000.00	0.00	1.46	6454.38	2210.91	56.32	2211.63	0.00	1620971.13	2421074.18	
7100.00	0.00	1.46	6554.38	2210.91	56.32	2211.63	0.00	1620971.13	2421074.18	
7200.00	0.00	1.46	6654.38	2210.91	56.32	2211.63	0.00	1620971.13	2421074.18	
7300.00	0.00	1.46	6754.38	2210.91	56.32	2211.63	0.00	1620971.13	2421074.18	
7400.00	0.00	1.46	6854.38	2210.91	56.32	2211.63	0.00	1620971.13	2421074.18	
7500.00	0.00	1.46	6954.38	2210.91	56.32	2211.63	0.00	1620971.13	2421074.18	
7600.00	0.00	1.46	7054.38	2210.91	56.32	2211.63	0.00	1620971.13	2421074.18	
7700.00	0.00	1.46	7154.38	2210.91	56.32	2211.63	0.00	1620971.13	2421074.18	
7800.00	0.00	1.46	7254.38	2210.91	56.32	2211.63	0.00	1620971.13	2421074.18	
7900.00	0.00	1.46	7354.38	2210.91	56.32	2211.63	0.00	1620971.13	2421074.18	
7912.62	0.00	1.46	7367.00	2210.91	56.32	2211.63	0.00	1620971.13	2421074.18	PBHL 1-21

### Targets

Name	Description Dip.	Dir.	TVD ft	+N/-S ft	+E/-W ft	Map Northing ft	Map Easting ft	<---- Latitude ----> Deg Min Sec	<--- Longitude ---> Deg Min Sec
PBHL 1-21			7367.00	2210.91	56.32	1620971.13	2421074.18	39 31 13.378 N	107 33 8.542 W
-Circle (Radius: 100)									
-Plan hit target									

### Casing Points

MD ft	TVD ft	Diameter in	Hole Size in	Name
1500.00	1414.74	9.625	12.250	9 5/8" Csg Pt

### Annotation

MD ft	TVD ft	
200.00	200.00	KOP Build 3/100ft
1200.00	1154.93	Hold
4337.40	3872.00	Top of Gas
4599.76	4099.21	Drop 3/100ft
5599.76	5054.14	Hold Vertical
7912.62	7367.00	PBHL 1-21

### Formations

MD	TVD	Formations	Lithology	Dip Angle	Dip Direction