

**ANADARKO PETROLEUM CORP - EBUS
DO NOT MAIL - PO BOX 4995
THE WOODLANDS, Texas**

NRC 1N-4Z

Majors 42

Post Job Summary **Cement Surface Casing**

Date Prepared: 6/2/2014
Version: 1

Service Supervisor: FANTASIA, JOSEPH

Submitted by: TRIER, DEREK

HALLIBURTON

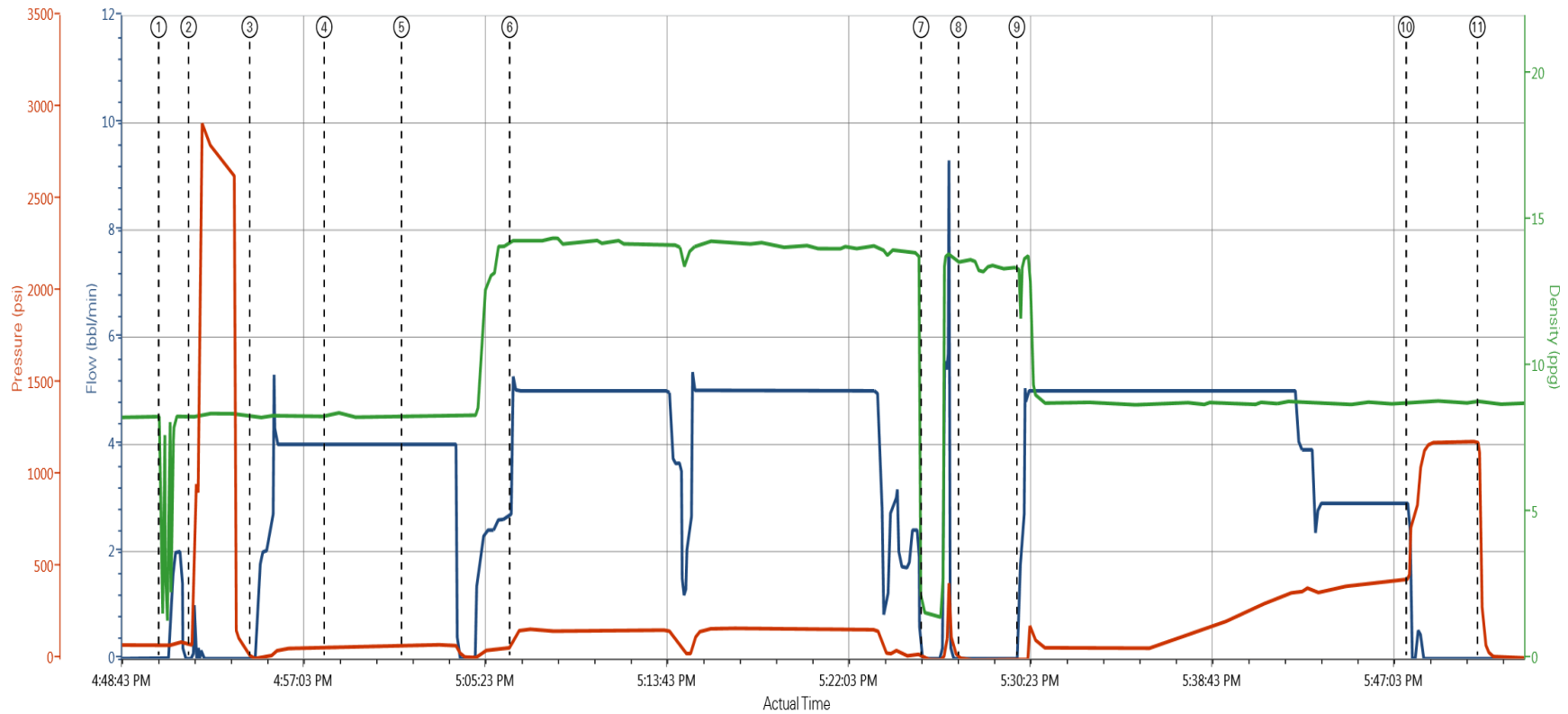
Pumping Schedule

Stage /Plug #	Fluid #	Fluid Type	Fluid Name	Surface Density lbm/gal	Avg Rate bbl/min	Surface Volume	Downhole Volume
1	1	Spacer	Fresh Water	8.33	4.00	10.0 bbl	10.0 bbl
1	1	Spacer	Mud Flush	8.50	4.00	12.0 bbl	12.0 bbl
1	1	Spacer	Fresh Water	8.33	4.00	10.0 bbl	10.0 bbl
1	2	Cement Slurry	SwiftCem B2	14.20	5.00	381.0 sacks	381.0 sacks

HALLIBURTON

Data Acquisition

ANADARKO NRC 1N-4HZ SURFACE



Comb Pump Rate (bbl/min) DH Density (ppg) PS Pump Press (psi)

① Start Job 0;1.96;74 ④ Pump Mudflush 4;8.34;65 ⑦ Shutdown 0;1.61;2 ⑩ Bump Plug 2.9;8.73;434
 ② Test Lines 0;8.27;74 ⑤ Pump Water Spacer 4;8.28;72 ⑧ Drop Top Plug 0;13.58;0 ⑪ Check Floats 0;8.78;1033
 ③ Pump Water Spacer 0;8.26;6 ⑥ Pump Lead Cement 3.9;14.31;67 ⑨ Pump Displacement 0.9;13.34;-7

HALLIBURTON

Service Supervisor Reports

Job Log

Date/Time	Chart #	Activity Code	Pump Rate	Cum Vol	Pump		Pressure (psig)		Comments
03/10/2014 15:30		Arrive at Location from Service Center							ARRIVE AT LOCATION. CASING ON BOTTOM.
03/10/2014 15:45		Assessment Of Location Safety Meeting							PERFORM SITE ASSESSMENT AND HAZARD HUNT WITH CREW PRIOR TO SPOTTING EQUIPMENT AND RIGGING UP.
03/10/2014 16:50		Start Job							PERFROM PRE-JOB SAFETY MEETING WITH ALL PRESENT PERSONELL PRIOR TO JOB
03/10/2014 16:51		Test Lines					2900.0		PRESSURE TEST LINES TO 2900 PSI.
03/10/2014 16:54		Pump Spacer 1	4	10			70.0		PUMP 10 BBLS WATER
03/10/2014 16:58		Pump Spacer 2	4	12			80.0		PUMP 12 BBLS MUDFLUSH
03/10/2014 17:01		Pump Spacer 1	4	10			75.0		PUMP 10 BBLS WATER
03/10/2014 17:06		Pump Cement	5	104			150.0		381 SKS SWIFTCEM MIXED AT 14.2 PPG USING RIG WATER. DENSITY VERIFIED BY SCALE.
03/10/2014 17:25		Shutdown							
03/10/2014 17:27		Drop Top Plug							PLUG PRELOADED
03/10/2014 17:29		Pump Displacement	3	78			300.0		GOOD RETURNS THROUGHOUT. CEMENT TO SURFACE AT 70 BBLS INTO 78 BBLS TOTAL DISPLACEMENT. APPROX 8 BBLS TO SURFACE.
03/10/2014 17:47		Bump Plug	2				434.0		PLUG LANDED AT 434 PSI. PRESSURE BROUGHT TO 1100 PSI AND HELD 2 MIN.
03/10/2014 17:51		Check Floats							FLOATS HELD. 1.5 BBLS BACK
03/10/2014 18:00		End Job							PERFROM PRE RIG DOWN SAFETY MEETING

The Road to Excellence Starts with Safety

Sold To #: 300466	Ship To #: 3358651	Quote #:	Sales Order #: 901175424
Customer: ANADARKO PETROLEUM CORP - EBUS		Customer Rep: Porter, Bob	
Well Name: NRC		Well #: 1N-4Z	API/UWI #: 05-123-38996
Field: WATTENBERG	City (SAP): IONE	County/Parish: Weld	State: Colorado
Contractor: Majors		Rig/Platform Name/Num: Majors 42	
Job Purpose: Cement Surface Casing			
Well Type: Development Well		Job Type: Cement Surface Casing	
Sales Person: GREGORY, JON	Srv Supervisor: FANTASIA, JOSEPH		MBU ID Emp #: 485445

Job Personnel

HES Emp Name	Exp Hrs	Emp #	HES Emp Name	Exp Hrs	Emp #	HES Emp Name	Exp Hrs	Emp #
FANTASIA, JOSEPH Brandon	3.0	485445	MARKOVICH, STEVEN Michael	3.0	502964	MASTEL, RYAN Eugene	3.0	561732
PATTILLO, RICK	3.0	561965						

Equipment

HES Unit #	Distance-1 way	HES Unit #	Distance-1 way	HES Unit #	Distance-1 way	HES Unit #	Distance-1 way
10977079	5 mile	11410470C	5 mile	11562546C	5 mile		

Job Hours

Date	On Location Hours	Operating Hours	Date	On Location Hours	Operating Hours	Date	On Location Hours	Operating Hours
TOTAL			Total is the sum of each column separately					

Job

Job Times

Formation Name					Date	Time	Time Zone
Formation Depth (MD)	Top		Bottom		Called Out	10 - Mar - 2014	10:45 MST
Form Type		BHST			On Location	10 - Mar - 2014	15:30 MST
Job depth MD	1057. ft	Job Depth TVD	1057. ft		Job Started	10 - Mar - 2014	16:00 MST
Water Depth		Wk Ht Above Floor			Job Completed	10 - Mar - 2014	18:00 MST
Perforation Depth (MD)	From		To		Departed Loc	10 - Mar - 2014	18:30 MST

Well Data

Description	New / Used	Max pressure psig	Size in	ID in	Weight lbm/ft	Thread	Grade	Top MD ft	Bottom MD ft	Top TVD ft	Bottom TVD ft
-------------	------------	-------------------	---------	-------	---------------	--------	-------	-----------	--------------	------------	---------------

Sales/Rental/3rd Party (HES)

Description	Qty	Qty uom	Depth	Supplier
CMT CASING EQUIPMENT BOM	1	JOB		
MILEAGE FOR CEMENTING CREW,ZI	20	MI		
ZI FUEL SURCHG-CARS/PICKUPS<1 1/2TON	20	MI		
KIT,HALL WELD-A	1	EA		
CNTRLZR, 9 5/8"x13 3/4',#500-0963-1375	8	EA		
BASKET - CEMENT - 9-5/8 CSG X 12-1/4	1	EA		
PLUG,CMTG,TOP,9 5/8,HWE,8.16 MIN/9.06 MA	1	EA		
COLLAR-STOP-9 5/8"-FRICTION-HINGED	2	EA		

Fluid Data									
Stage/Plug #: 1									
Fluid #	Stage Type	Fluid Name	Qty	Qty uom	Mixing Density lbm/gal	Yield ft ³ /sk	Mix Fluid Gal/sk	Rate bbl/min	Total Mix Fluid Gal/sk
1	Fresh Water		10.00	Bbl	8.33			4.0	
1	Mud Flush		12.00	bbl	8.5			4.0	
3.33 lbm/bbl		MUD FLUSH III, 40 LB SACK (101633304)							
0 gal/bbl		FRESH WATER							
1	Fresh Water		10.00	Bbl	8.33			4.0	
2	SwiftCem B2	SWIFTCM (TM) SYSTEM (452990)	381.0	sacks	14.2	1.54	7.66	5.0	7.66
7.66 Gal		FRESH WATER							
Calculated Values		Pressures		Volumes					
Displacement		Shut In: Instant		Lost Returns		Cement Slurry		Pad	
Top Of Cement		5 Min		Cement Returns	8.0	Actual Displacement	78.0	Treatment	
Frac Gradient		15 Min		Spacers	32.0	Load and Breakdown		Total Job	
Rates									
Circulating		Mixing		Displacement	3.0	Avg. Job			
Cement Left In Pipe	Amount	0 ft	Reason	Shoe Joint					
Frac Ring # 1 @	ID	Frac ring # 2 @	ID	Frac Ring # 3 @	ID	Frac Ring # 4 @	ID		
The Information Stated Herein Is Correct				Customer Representative Signature					

