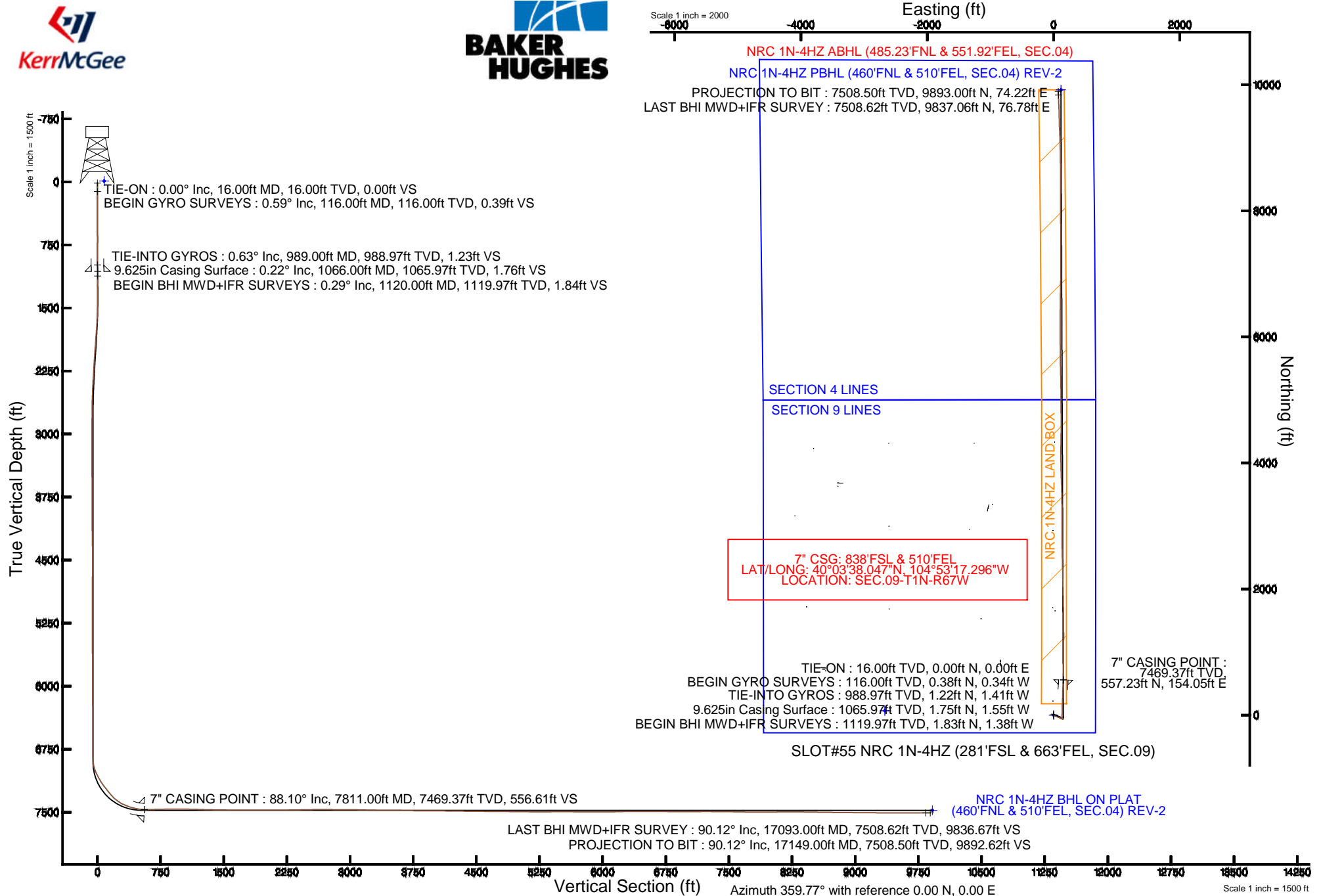


KERR-MCGEE OIL & GAS ONSHORE LP

Location: COLORADO Slot: SLOT#55 NRC 1N-4HZ (281'FSL & 663'FEL, SEC.09)
 Field: WELD COUNTY (KERR MCGEE) Well: NRC 1N-4HZ
 Facility: SEC.09-T1N-R67W Wellbore: NRC 1N-4HZ PWB

Plot reference wellpath is NRC 1N-4HZ (REV-B.0) PWP

True vertical depths are referenced to XTREME 24 (16' RKB) (RKB)	Grid System: NAD83 / Lambert Colorado SP, Northern Zone (501), US feet
Measured depths are referenced to XTREME 24 (16' RKB) (RKB)	North Reference: True north
XTREME 24 (16' RKB) (RKB) to Mean Sea Level: 5062 feet	Scale: True distance
Mean Sea Level to Mud line (At Slot: SLOT#55 NRC 1N-4HZ (281'FSL & 663'FEL, SEC.09)): 0 feet	Depths are in feet
Coordinates are in feet referenced to Slot.	Created by: wilsjef02 on 4/28/2014





Actual Wellpath Report

NRC 1N-4HZ AWP

Page 1 of 6



REFERENCE WELLPATH IDENTIFICATION			
Operator	KERR-MCGEE OIL & GAS ONSHORE LP	Slot	SLOT#55 NRC 1N-4HZ (281'FSL & 663'FEL, SEC.09)
Area	COLORADO	Well	NRC 1N-4HZ
Field	WELD COUNTY (KERR MCGEE)	Wellbore	NRC 1N-4HZ AWB
Facility	SEC.09-T1N-R67W		

REPORT SETUP INFORMATION			
Projection System	NAD83 / Lambert Colorado SP, Northern Zone (501), US feet	Software System	WellArchitect® 4.0.0
North Reference	True	User	Wilsjef02
Scale	0.999962	Report Generated	4/28/2014 at 2:25:28 PM
Convergence at slot	n/a	Database/Source file	WellArchitectDB/NRC_1N-4HZ_AWB.xml

WELLPATH LOCATION						
	Local coordinates		Grid coordinates		Geographic coordinates	
	North[ft]	East[ft]	Easting[US ft]	Northing[US ft]	Latitude	Longitude
Slot Location	-3335.87	1022.57	3171111.62	1264943.03	40°03'32.540"N	104°53'19.277"W
Facility Reference Pt			3170066.25	1268271.69	40°04'05.506"N	104°53'32.428"W
Field Reference Pt			3197771.84	1268891.29	40°04'09.600"N	104°47'36.000"W

WELLPATH DATUM			
Calculation method	Minimum curvature	XTREME 24 (16' RKB) (RKB) to Facility Vertical Datum	5062.00ft
Horizontal Reference Pt	Slot	XTREME 24 (16' RKB) (RKB) to Mean Sea Level	5062.00ft
Vertical Reference Pt	XTREME 24 (16' RKB) (RKB)	XTREME 24 (16' RKB) (RKB) to Mud Line at Slot (SLOT#55 NRC 1N-4HZ (281'FSL & 663'FEL, SEC.09))	5062.00ft
MD Reference Pt	XTREME 24 (16' RKB) (RKB)	Section Origin	N 0.00, E 0.00 ft
Field Vertical Reference	Mean Sea Level	Section Azimuth	0.43°

Actual Wellpath Report

NRC 1N-4HZ AWP

Page 2 of 6

REFERENCE WELLPATH IDENTIFICATION

Operator	KERR-MCGEE OIL & GAS ONSHORE LP	Slot	SLOT#55 NRC 1N-4HZ (281'FSL & 663'FEL, SEC.09)
Area	COLORADO	Well	NRC 1N-4HZ
Field	WELD COUNTY (KERR MCGEE)	Wellbore	NRC 1N-4HZ AWB
Facility	SEC.09-T1N-R67W		

WELLPATH DATA (120 stations) † = interpolated/extrapolated station

MD [ft]	Inclination [°]	Azimuth [°]	TVD [ft]	Vert Sect [ft]	North [ft]	East [ft]	Latitude	Longitude	DLS [°/100ft]	Comments
0.00†	0.000	318.210	0.00	0.00	0.00	0.00	40°03'32.540"N	104°53'19.277"W	0.00	
16.00	0.000	318.210	16.00	0.00	0.00	0.00	40°03'32.540"N	104°53'19.277"W	0.00	TIE-ON
116.00	0.590	318.210	116.00	0.38	0.38	-0.34	40°03'32.544"N	104°53'19.281"W	0.59	BEGIN GYRO SURVEYS
216.00	0.710	257.740	215.99	0.63	0.64	-1.29	40°03'32.546"N	104°53'19.294"W	0.66	
316.00	0.420	130.870	315.99	0.25	0.26	-1.62	40°03'32.543"N	104°53'19.298"W	1.02	
416.00	0.450	64.890	415.99	0.18	0.19	-0.99	40°03'32.542"N	104°53'19.290"W	0.47	
516.00	0.420	42.000	515.99	0.63	0.63	-0.39	40°03'32.546"N	104°53'19.282"W	0.18	
616.00	0.520	318.370	615.98	1.24	1.24	-0.44	40°03'32.552"N	104°53'19.283"W	0.63	
716.00	0.600	253.710	715.98	1.43	1.43	-1.25	40°03'32.554"N	104°53'19.293"W	0.60	
816.00	0.410	174.220	815.98	0.92	0.93	-1.71	40°03'32.549"N	104°53'19.299"W	0.66	
916.00	0.340	57.100	915.97	0.73	0.74	-1.43	40°03'32.547"N	104°53'19.295"W	0.64	
989.00	0.630	335.470	988.97	1.21	1.22	-1.41	40°03'32.552"N	104°53'19.295"W	0.92	TIE-INTO GYROS
1120.00	0.290	96.940	1119.97	1.82	1.83	-1.38	40°03'32.558"N	104°53'19.295"W	0.63	BEGIN BHI MWD+IFR SURVEYS
1183.00	0.800	112.540	1182.97	1.64	1.65	-0.82	40°03'32.556"N	104°53'19.288"W	0.84	
1277.00	0.770	251.800	1276.96	1.19	1.20	-0.81	40°03'32.552"N	104°53'19.287"W	1.57	
1371.00	1.530	94.190	1370.95	0.91	0.91	-0.16	40°03'32.549"N	104°53'19.279"W	2.41	
1465.00	2.520	96.930	1464.89	0.59	0.57	3.14	40°03'32.546"N	104°53'19.237"W	1.06	
1560.00	4.850	110.580	1559.69	-1.03	-1.10	8.98	40°03'32.529"N	104°53'19.162"W	2.60	
1654.00	6.090	117.690	1653.26	-4.68	-4.81	17.11	40°03'32.492"N	104°53'19.057"W	1.50	
1748.00	7.350	116.700	1746.62	-9.63	-9.83	26.90	40°03'32.443"N	104°53'18.931"W	1.35	
1844.00	8.700	118.670	1841.68	-15.78	-16.07	38.76	40°03'32.381"N	104°53'18.779"W	1.43	
1937.00	9.950	117.570	1933.44	-22.77	-23.17	52.05	40°03'32.311"N	104°53'18.608"W	1.36	
2031.00	9.410	114.530	2026.11	-29.62	-30.11	66.24	40°03'32.242"N	104°53'18.425"W	0.79	
2124.00	9.090	113.190	2117.90	-35.56	-36.16	79.91	40°03'32.183"N	104°53'18.249"W	0.41	
2217.00	8.690	113.480	2209.78	-41.16	-41.86	93.11	40°03'32.126"N	104°53'18.080"W	0.43	
2310.00	8.370	112.130	2301.75	-46.41	-47.20	105.82	40°03'32.074"N	104°53'17.916"W	0.41	
2403.00	7.870	112.730	2393.82	-51.33	-52.21	117.96	40°03'32.024"N	104°53'17.760"W	0.55	
2496.00	7.850	105.730	2485.95	-55.42	-56.40	129.95	40°03'31.983"N	104°53'17.606"W	1.03	
2589.00	5.660	109.480	2578.30	-58.59	-59.65	140.39	40°03'31.951"N	104°53'17.472"W	2.40	
2682.00	3.890	99.730	2670.97	-60.60	-61.71	147.82	40°03'31.930"N	104°53'17.376"W	2.09	
2775.00	2.000	100.590	2763.84	-61.40	-62.54	152.53	40°03'31.922"N	104°53'17.315"W	2.03	
2867.00	1.750	107.980	2855.79	-62.10	-63.27	155.44	40°03'31.915"N	104°53'17.278"W	0.38	
2959.00	0.200	229.680	2947.78	-62.63	-63.81	156.65	40°03'31.909"N	104°53'17.262"W	2.02	
3143.00	0.120	325.840	3131.78	-62.68	-63.86	156.30	40°03'31.909"N	104°53'17.267"W	0.13	
3419.00	0.270	308.100	3407.78	-62.05	-63.22	155.63	40°03'31.915"N	104°53'17.276"W	0.06	
3694.00	0.440	295.030	3682.77	-61.21	-62.37	154.16	40°03'31.924"N	104°53'17.294"W	0.07	
3970.00	0.730	283.760	3958.76	-60.37	-61.50	151.49	40°03'31.932"N	104°53'17.329"W	0.11	
4246.00	1.750	291.490	4234.69	-58.45	-59.54	145.86	40°03'31.952"N	104°53'17.401"W	0.37	
4338.00	2.260	296.430	4326.63	-57.15	-58.22	142.93	40°03'31.965"N	104°53'17.439"W	0.58	
4430.00	2.010	301.310	4418.57	-55.52	-56.57	139.93	40°03'31.981"N	104°53'17.477"W	0.34	
4515.00	0.670	227.340	4503.55	-55.10	-56.14	138.29	40°03'31.985"N	104°53'17.499"W	2.28	
4771.00	1.080	227.980	4759.52	-57.75	-58.76	135.40	40°03'31.959"N	104°53'17.536"W	0.16	
4856.00	0.090	162.870	4844.51	-58.35	-59.36	134.82	40°03'31.953"N	104°53'17.543"W	1.23	
5111.00	0.240	73.710	5099.51	-58.39	-59.41	135.39	40°03'31.953"N	104°53'17.536"W	0.10	
5367.00	0.100	279.110	5355.51	-58.20	-59.22	135.69	40°03'31.955"N	104°53'17.532"W	0.13	

REFERENCE WELLPATH IDENTIFICATION

Operator	KERR-MCGEE OIL & GAS ONSHORE LP	Slot	SLOT#55 NRC 1N-4HZ (281'FSL & 663'FEL, SEC.09)
Area	COLORADO	Well	NRC 1N-4HZ
Field	WELD COUNTY (KERR MCGEE)	Wellbore	NRC 1N-4HZ AWP
Facility	SEC.09-T1N-R67W		

WELLPATH DATA (120 stations) † = interpolated/extrapolated station

MD [ft]	Inclination [°]	Azimuth [°]	TVD [ft]	Vert Sect [ft]	North [ft]	East [ft]	Latitude	Longitude	DLS [°/100ft]	Comments
5622.00	0.560	21.990	5610.51	-57.01	-58.03	135.93	40°03'31.967"N	104°53'17.529"W	0.23	
5877.00	0.420	325.510	5865.50	-55.08	-56.10	135.87	40°03'31.986"N	104°53'17.530"W	0.19	
6133.00	0.290	244.460	6121.50	-54.60	-55.61	134.75	40°03'31.990"N	104°53'17.544"W	0.18	
6388.00	0.650	351.410	6376.49	-53.45	-54.46	133.96	40°03'32.002"N	104°53'17.554"W	0.31	
6558.00	0.340	300.640	6546.48	-52.25	-53.25	133.38	40°03'32.014"N	104°53'17.562"W	0.30	
6813.00	0.430	209.330	6801.48	-52.70	-53.70	132.26	40°03'32.009"N	104°53'17.576"W	0.22	
6899.00	3.080	0.720	6887.44	-50.67	-51.67	132.13	40°03'32.029"N	104°53'17.578"W	4.03	
6984.00	16.980	3.650	6970.94	-35.93	-36.92	132.95	40°03'32.175"N	104°53'17.567"W	16.36	
7069.00	26.110	3.210	7049.92	-4.79	-5.80	134.79	40°03'32.483"N	104°53'17.543"W	10.74	
7154.00	31.430	1.380	7124.40	36.09	35.06	136.38	40°03'32.886"N	104°53'17.523"W	6.34	
7239.00	36.680	1.920	7194.80	83.66	82.62	137.76	40°03'33.357"N	104°53'17.505"W	6.19	
7324.00	38.380	0.190	7262.21	135.43	134.39	138.70	40°03'33.868"N	104°53'17.493"W	2.35	
7409.00	45.830	2.620	7325.23	192.36	191.31	140.18	40°03'34.431"N	104°53'17.474"W	8.97	
7494.00	56.970	1.240	7378.18	258.66	257.60	142.35	40°03'35.086"N	104°53'17.446"W	13.17	
7579.00	67.050	0.950	7418.02	333.62	332.55	143.78	40°03'35.826"N	104°53'17.428"W	11.86	
7665.00	74.270	3.410	7446.48	414.66	413.57	146.90	40°03'36.627"N	104°53'17.388"W	8.82	
7763.00	83.100	2.800	7465.69	510.56	509.43	152.09	40°03'37.574"N	104°53'17.321"W	9.03	
7811.00†	88.099	1.884	7469.37	558.37	557.23	154.05	40°03'38.047"N	104°53'17.296"W	10.59	7" CASING POINT
7845.00	91.640	1.240	7469.45	592.36	591.22	154.97	40°03'38.383"N	104°53'17.284"W	10.59	
7930.00	91.570	0.320	7467.07	677.33	676.17	156.13	40°03'39.222"N	104°53'17.269"W	1.09	
8015.00	91.260	0.610	7464.97	762.30	761.14	156.82	40°03'40.062"N	104°53'17.260"W	0.50	
8100.00	90.400	1.210	7463.74	847.29	846.12	158.17	40°03'40.902"N	104°53'17.243"W	1.23	
8185.00	89.790	359.900	7463.60	932.28	931.12	158.99	40°03'41.742"N	104°53'17.232"W	1.70	
8270.00	89.750	359.860	7463.94	1017.28	1016.12	158.81	40°03'42.581"N	104°53'17.234"W	0.07	
8356.00	89.420	0.290	7464.56	1103.28	1102.11	158.93	40°03'43.431"N	104°53'17.233"W	0.63	
8440.00	87.750	0.260	7466.64	1187.25	1186.08	159.33	40°03'44.261"N	104°53'17.228"W	1.99	
8526.00	88.300	359.930	7469.60	1273.19	1272.03	159.47	40°03'45.111"N	104°53'17.226"W	0.75	
8611.00	88.920	359.750	7471.66	1358.16	1357.01	159.24	40°03'45.950"N	104°53'17.229"W	0.76	
8781.00	89.290	359.630	7474.32	1528.13	1526.98	158.32	40°03'47.630"N	104°53'17.241"W	0.23	
9036.00	90.060	358.830	7475.76	1783.06	1781.95	154.89	40°03'50.150"N	104°53'17.285"W	0.44	
9292.00	89.780	358.530	7476.12	2038.94	2037.88	148.99	40°03'52.679"N	104°53'17.361"W	0.16	
9555.00	91.110	358.970	7474.08	2301.82	2300.81	143.25	40°03'55.277"N	104°53'17.434"W	0.53	
9741.00	91.010	358.780	7470.64	2487.72	2486.74	139.60	40°03'57.114"N	104°53'17.481"W	0.12	
9835.00	90.890	358.630	7469.08	2581.66	2580.70	137.48	40°03'58.043"N	104°53'17.509"W	0.20	
9928.00	90.060	358.750	7468.31	2674.61	2673.67	135.35	40°03'58.962"N	104°53'17.536"W	0.90	
10021.00	88.890	359.150	7469.16	2767.58	2766.65	133.65	40°03'59.881"N	104°53'17.558"W	1.33	
10113.00	89.160	0.790	7470.73	2859.56	2858.64	133.60	40°04'00.790"N	104°53'17.559"W	1.81	
10300.00	90.150	0.140	7471.85	3046.55	3045.62	135.12	40°04'02.638"N	104°53'17.539"W	0.63	
10393.00	88.390	359.750	7473.04	3139.54	3138.61	135.03	40°04'03.556"N	104°53'17.540"W	1.94	
10578.00	89.130	359.040	7477.04	3324.46	3323.56	133.08	40°04'05.384"N	104°53'17.565"W	0.55	
10762.00	89.840	358.920	7478.69	3508.39	3507.52	129.80	40°04'07.202"N	104°53'17.607"W	0.39	
10946.00	88.760	358.070	7480.94	3692.27	3691.44	124.97	40°04'09.020"N	104°53'17.670"W	0.75	
11129.00	89.810	358.450	7483.23	3875.12	3874.33	119.41	40°04'10.827"N	104°53'17.741"W	0.61	
11313.00	89.720	358.730	7483.98	4059.02	4058.28	114.89	40°04'12.645"N	104°53'17.799"W	0.16	
11497.00	89.230	1.520	7485.67	4243.00	4242.25	115.29	40°04'14.463"N	104°53'17.794"W	1.54	

Actual Wellpath Report

NRC 1N-4HZ AWP

Page 4 of 6

REFERENCE WELLPATH IDENTIFICATION			
Operator	KERR-MCGEE OIL & GAS ONSHORE LP	Slot	SLOT#55 NRC 1N-4HZ (281'FSL & 663'FEL, SEC.09)
Area	COLORADO	Well	NRC 1N-4HZ
Field	WELD COUNTY (KERR MCGEE)	Wellbore	NRC 1N-4HZ AWB
Facility	SEC.09-T1N-R67W		

WELLPATH DATA (120 stations)										
MD [ft]	Inclination [°]	Azimuth [°]	TVD [ft]	Vert Sect [ft]	North [ft]	East [ft]	Latitude	Longitude	DLS [°/100ft]	Comments
11773.00	89.450	0.370	7488.85	4518.96	4518.19	119.84	40°04'17.190"N	104°53'17.736"W	0.42	
12049.00	89.600	359.460	7491.13	4794.94	4794.18	119.43	40°04'19.917"N	104°53'17.741"W	0.33	
12311.00	89.260	359.590	7493.74	5056.89	5056.15	117.26	40°04'22.506"N	104°53'17.769"W	0.14	
12481.00	89.810	359.320	7495.12	5226.86	5226.14	115.64	40°04'24.186"N	104°53'17.789"W	0.36	
12652.00	90.740	358.550	7494.30	5397.80	5397.11	112.46	40°04'25.875"N	104°53'17.830"W	0.71	
12821.00	89.600	358.850	7493.80	5566.72	5566.06	108.63	40°04'27.545"N	104°53'17.880"W	0.70	
12992.00	89.470	359.890	7495.19	5737.68	5737.04	106.75	40°04'29.235"N	104°53'17.904"W	0.61	
13247.00	89.780	359.150	7496.86	5992.64	5992.02	104.61	40°04'31.754"N	104°53'17.931"W	0.31	
13332.00	91.040	0.290	7496.25	6077.63	6077.02	104.20	40°04'32.594"N	104°53'17.937"W	2.00	
13502.00	91.850	359.630	7491.96	6247.57	6246.96	104.08	40°04'34.274"N	104°53'17.938"W	0.61	
13587.00	90.700	0.640	7490.07	6332.54	6331.94	104.28	40°04'35.114"N	104°53'17.936"W	1.80	
13672.00	89.530	1.240	7489.90	6417.54	6416.92	105.67	40°04'35.953"N	104°53'17.918"W	1.55	
13842.00	90.270	0.340	7490.20	6587.53	6586.90	108.02	40°04'37.633"N	104°53'17.887"W	0.69	
13927.00	89.100	1.170	7490.66	6672.52	6671.89	109.14	40°04'38.473"N	104°53'17.873"W	1.69	
14098.00	89.650	0.890	7492.53	6843.50	6842.85	112.21	40°04'40.163"N	104°53'17.834"W	0.36	
14353.00	90.430	359.930	7492.35	7098.50	7097.84	114.03	40°04'42.682"N	104°53'17.810"W	0.49	
14609.00	89.600	0.420	7492.28	7354.49	7353.84	114.82	40°04'45.212"N	104°53'17.800"W	0.38	
14865.00	88.950	359.700	7495.52	7610.46	7609.82	115.08	40°04'47.742"N	104°53'17.796"W	0.38	
15035.00	89.170	358.920	7498.31	7780.41	7779.78	113.04	40°04'49.421"N	104°53'17.823"W	0.48	
15290.00	91.170	359.760	7497.55	8035.35	8034.75	110.10	40°04'51.941"N	104°53'17.861"W	0.85	
15460.00	90.740	0.230	7494.72	8205.32	8204.72	110.09	40°04'53.621"N	104°53'17.861"W	0.37	
15545.00	88.890	0.630	7495.00	8290.31	8289.71	110.72	40°04'54.461"N	104°53'17.853"W	2.23	
15801.00	89.100	359.590	7499.49	8546.26	8545.67	111.21	40°04'56.990"N	104°53'17.846"W	0.41	
16056.00	89.440	359.400	7502.73	8801.21	8800.64	108.97	40°04'59.510"N	104°53'17.875"W	0.15	
16311.00	89.440	358.340	7505.23	9056.10	9055.57	103.94	40°05'02.029"N	104°53'17.940"W	0.42	
16567.00	89.600	357.180	7507.37	9311.81	9311.36	93.93	40°05'04.557"N	104°53'18.068"W	0.46	
16652.00	89.590	359.030	7507.97	9396.73	9396.31	91.12	40°05'05.396"N	104°53'18.105"W	2.18	
16992.00	90.120	357.620	7508.83	9736.49	9736.16	81.18	40°05'08.755"N	104°53'18.232"W	0.44	
17093.00	90.120	357.380	7508.62	9837.36	9837.06	76.78	40°05'09.752"N	104°53'18.289"W	0.24	LAST BHI MWD+IFR SURVEY
17149.00	90.120	357.380	7508.50	9893.28	9893.00	74.22	40°05'10.305"N	104°53'18.322"W	0.00	PROJECTION TO BIT

HOLE & CASING SECTIONS - Ref Wellbore: NRC 1N-4HZ AWB				Ref Wellpath: NRC 1N-4HZ AWP					
String/Diameter	Start MD [ft]	End MD [ft]	Interval [ft]	Start TVD [ft]	End TVD [ft]	Start N/S [ft]	Start E/W [ft]	End N/S [ft]	End E/W [ft]
13.5in Open Hole	16.00	1066.00	1050.00	16.00	1065.97	0.00	0.00	1.75	-1.55
9.625in Casing Surface	16.00	1066.00	1050.00	16.00	1065.97	0.00	0.00	1.75	-1.55
8.75in Open Hole	1066.00	7820.00	6754.00	1065.97	7469.60	1.75	-1.55	566.23	154.33
7in Casing Intermediate	16.00	7811.00	7795.00	16.00	7469.37	0.00	0.00	557.23	154.05
6.125in Open Hole	7811.00	17149.00	9338.00	7469.37	7508.50	557.23	154.05	9893.00	74.22

REFERENCE WELLPATH IDENTIFICATION			
Operator	KERR-MCGEE OIL & GAS ONSHORE LP	Slot	SLOT#55 NRC 1N-4HZ (281'FSL & 663'FEL, SEC.09)
Area	COLORADO	Well	NRC 1N-4HZ
Field	WELD COUNTY (KERR MCGEE)	Wellbore	NRC 1N-4HZ AWB
Facility	SEC.09-T1N-R67W		

TARGETS									
Name	MD [ft]	TVD [ft]	North [ft]	East [ft]	Grid East [US ft]	Grid North [US ft]	Latitude	Longitude	Shape
NRC SECTION 4 LINES		-9.00	69.06	-2672.08	3168439.23	1264993.66	40°03'33.221"N	104°53'53.642"W	polygon
NRC SECTION 9 LINES		-9.00	69.06	-2672.08	3168439.23	1264993.66	40°03'33.221"N	104°53'53.642"W	polygon
NRC 1N-4HZ BHL ON PLAT (460'FNL & 510'FEL, SEC.04) REV-1		7462.00	9918.23	116.14	3171159.38	1274861.44	40°05'10.554"N	104°53'17.783"W	point
NRC 1N-4HZ LAND BOX		7470.00	0.00	0.00	3171111.62	1264943.03	40°03'32.540"N	104°53'19.277"W	polygon
NRC 1N-4HZ BHL ON PLAT (460'FNL & 510'FEL, SEC.04) REV-2		7477.00	9918.23	116.14	3171159.38	1274861.44	40°05'10.554"N	104°53'17.783"W	point

WELLPATH COMPOSITION - Ref Wellbore: NRC 1N-4HZ AWB					Ref Wellpath: NRC 1N-4HZ AWP	
Start MD [ft]	End MD [ft]	Positional Uncertainty Model	Log Name/Comment		Wellbore	
16.00	989.00	Generic gyro - continuous (Standard)	MS ENERGY GYRODATA SURVEYS <116-989>		NRC 1N-4HZ AWB	
989.00	7763.00	NaviTrak (MAGCORR,IFR)	BHI MWD+IFR SURVEYS 8 1/4" HOLE <1120-7763>		NRC 1N-4HZ AWB	
7763.00	17093.00	NaviTrak (MAGCORR,IFR)	BHI MWD+IFR SURVEYS 6 1/8" HOLE <7845-17093>		NRC 1N-4HZ AWB	
17093.00	17149.00	Blind Drilling (std)	Projection to bit		NRC 1N-4HZ AWB	



Actual Wellpath Report

NRC 1N-4HZ AWP

Page 6 of 6



REFERENCE WELLPATH IDENTIFICATION

Operator	KERR-MCGEE OIL & GAS ONSHORE LP	Slot	SLOT#55 NRC 1N-4HZ (281'FSL & 663'FEL, SEC.09)
Area	COLORADO	Well	NRC 1N-4HZ
Field	WELD COUNTY (KERR MCGEE)	Wellbore	NRC 1N-4HZ AWB
Facility	SEC.09-T1N-R67W		

WELLPATH COMMENTS

MD [ft]	Inclination [°]	Azimuth [°]	TVD [ft]	Comment
16.00	0.000	318.210	16.00	TIE-ON
116.00	0.590	318.210	116.00	BEGIN GYRO SURVEYS
989.00	0.630	335.470	988.97	TIE-INTO GYROS
1120.00	0.290	96.940	1119.97	BEGIN BHI MWD+IFR SURVEYS
7811.00	88.099	1.884	7469.37	7" CASING POINT
17093.00	90.120	357.380	7508.62	LAST BHI MWD+IFR SURVEY
17149.00	90.120	357.380	7508.50	PROJECTION TO BIT