

LAND SURVEYOR'S CERTIFICATION

LAMP, RYNEARSON & ASSOCIATES, INC., OF FT. COLLINS, COLORADO HAS, IN ACCORDANCE WITH A REQUEST FROM COLLIN RICHARDSON FOR MINERAL RESOURCES, INC., DETERMINED THE SURFACE LOCATION OF THE WELL DESIGNATED AS GP-HILLSIDE 1-18-18 TO BE 526' FROM THE NORTH LINE AND 1305' FROM THE EAST LINE OF SECTION 20, TOWNSHIP 5 NORTH, RANGE 65 WEST OF THE 6TH P.M., WELD COUNTY, COLORADO.

NOTES:

DISTANCES ARE MEASURED PERPENDICULAR TO NEAREST SECTION LINE AND ARE SHOWN ON THE SAME SIDE OF THE SECTION LINE WHERE THE WELL IS LOCATED.

THIS MAP DOES NOT REPRESENT A MONUMENTED BOUNDARY SURVEY.

SIXTEENTH CORNER LOCATIONS ARE COMPUTED, UNLESS OTHERWISE NOTED.

BASIS OF BEARING:

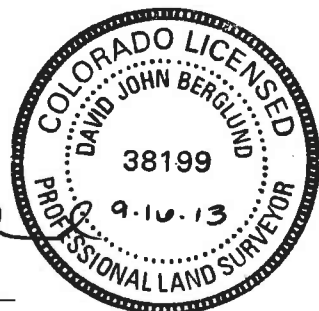
THE NORTH LINE OF THE NORTHEAST QUARTER OF SECTION 20-T5N-R65W BEARS N89°44'34"E BETWEEN THE NORTH QUARTER CORNER OF SECTION 20 MONUMENTED WITH 3 1/4" A.C. IN R.B. STAMPED "PLS 36053" AND THE NORTHEAST CORNER OF SECTION 20 MONUMENTED WITH A 3 1/4" A.C. IN R.B. STAMPED "LS 34990" BASED ON THE COLORADO NORTH 0501 STATE PLANE COORDINATE SYSTEM.

ELEVATIONS ARE BASED ON NAVD 88, AS OBSERVED FROM GPS OBSERVATIONS

LEGEND

- ALIQUOT CORNER A.C. ALUMINUM CAP
- ⊙ BOTTOM HOLE R.B. RANGE BOX
- PROPOSED WELL

DAVID JOHN BERGLUND
 COLORADO PLS 38199
 DATE OF SURVEY: 8/19/2010 (SECTION CONTROL)
 DATE OF SURVEY: 08/23/2013 (WELL LOCATION)



0 500 1000 2000
 1"=1000' US SURVEY FEET

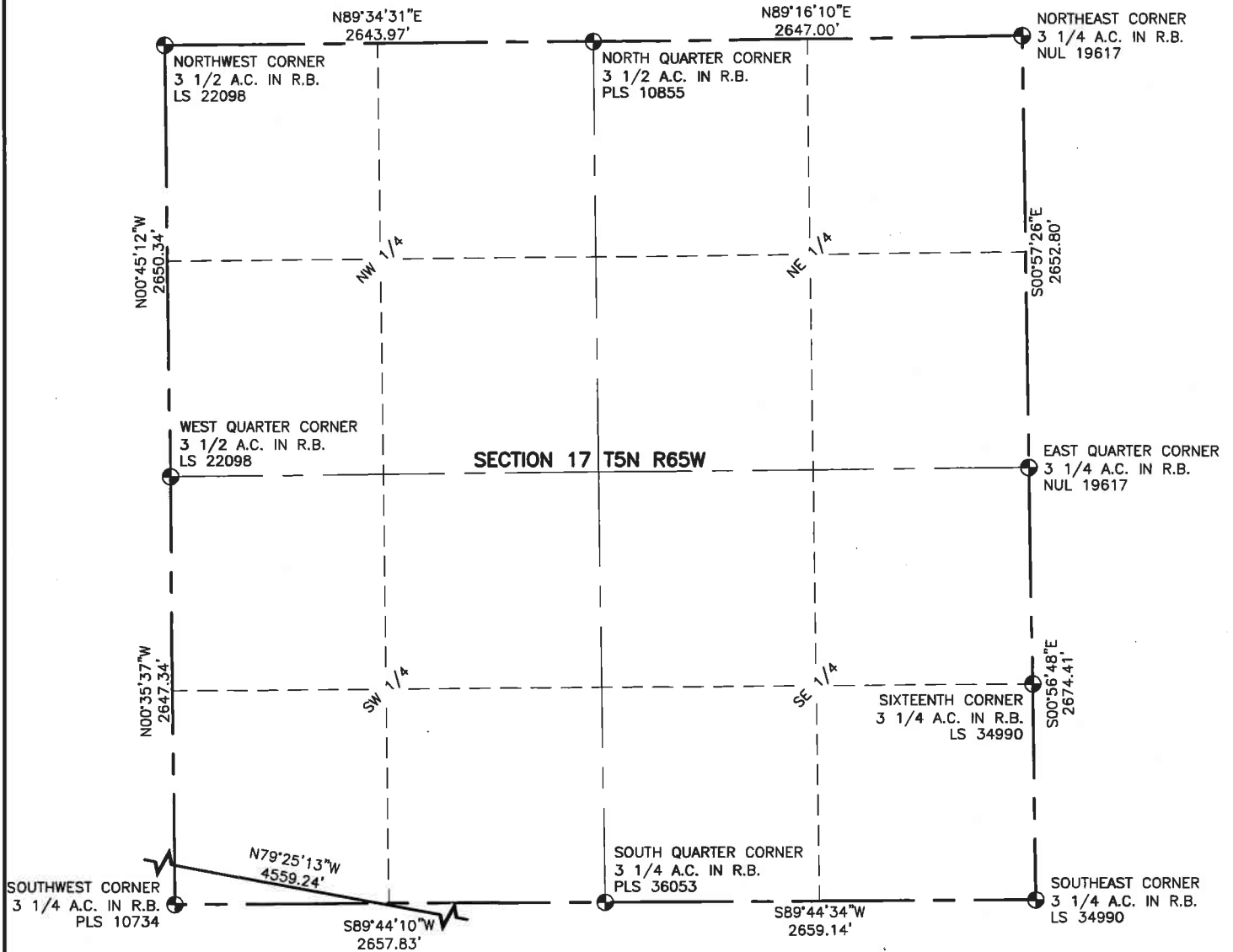


**LAMP RYNEARSON
 & ASSOCIATES**

4715 Innovation Drive 970.226.0342 | P
 Fort Collins, CO 80525 970.226.0879 | F
 www.LRA-Inc.com

Proposed Well Location Exhibit
 GP-Hillside 1-18-18
 1 of 3

drawn by SSZ	date 9/4/2013	cogcc id 332837	project - task number 0213001.01	book and page MR01/MR02	surface - location NE/4, NE/4, SEC20, T5N, R65W
path\filename P:\Engineering\0213001.01\DRAWINGS\EXHIBITS\WELL PLATS\0213001-01EXWPH01.dwg					



NOTES:

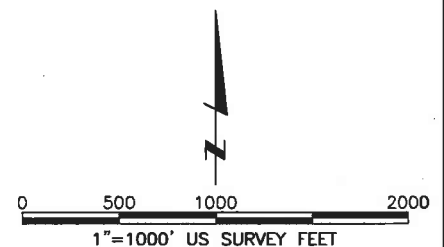
DISTANCES ARE MEASURED PERPENDICULAR TO NEAREST SECTION LINE AND ARE SHOWN ON THE SAME SIDE OF THE SECTION LINE WHERE THE WELL IS LOCATED.

THIS MAP DOES NOT REPRESENT A MONUMENTED BOUNDARY SURVEY.

SIXTEENTH CORNER LOCATIONS ARE COMPUTED, UNLESS OTHERWISE NOTED.

LEGEND

- ALIQUOT CORNER
- ⊙ BOTTOM HOLE
- A.C. ALUMINUM CAP
- R.B. RANGE BOX

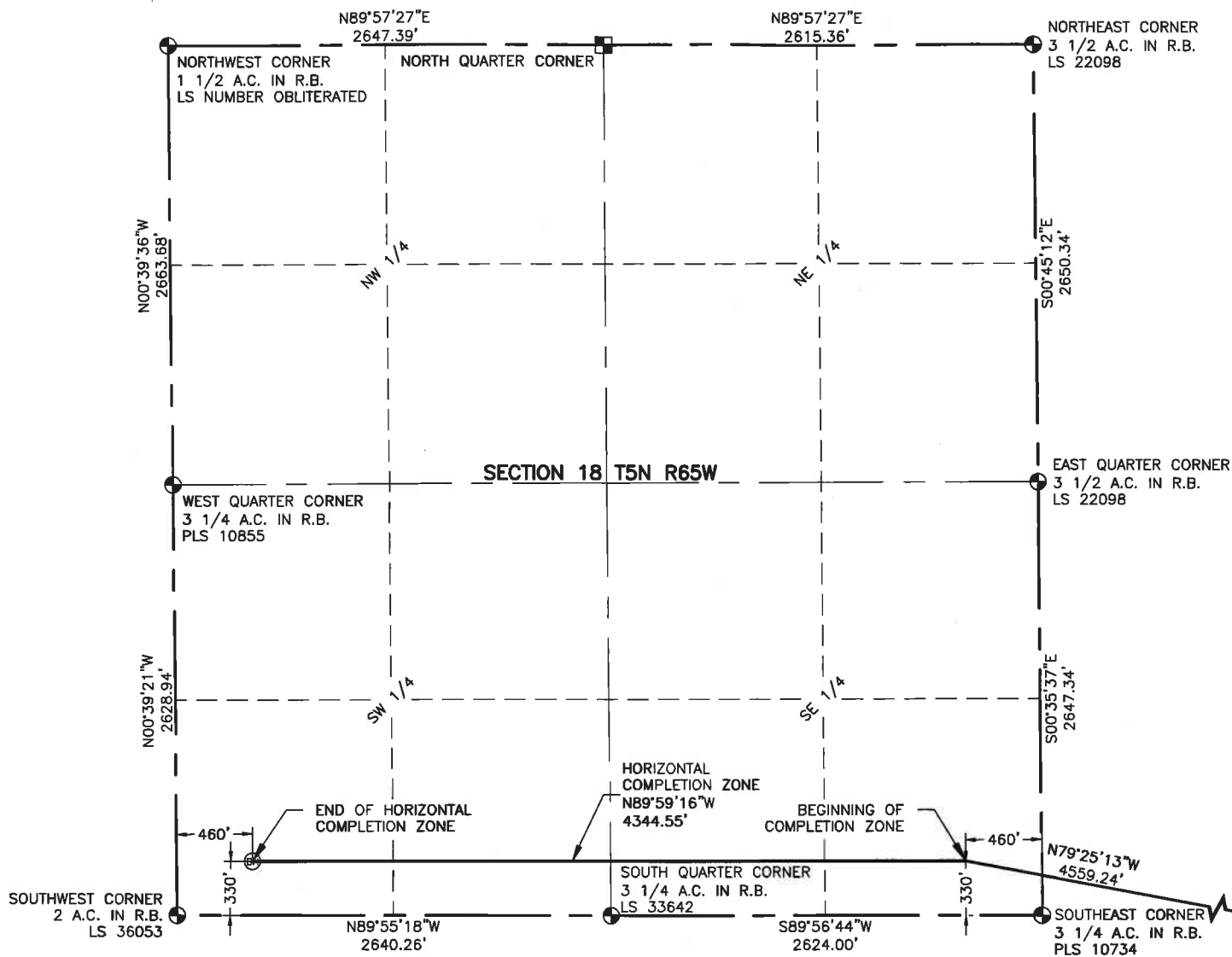


**LAMP RYNEARSON
& ASSOCIATES**

4715 Innovation Drive 970.226.0342 | P
Fort Collins, CO 80525 970.226.0879 | F
www.LRA-Inc.com

Proposed Well Location Exhibit
GP-Hillside 1-18-18
2 of 3

drawn by SSZ	date 9/4/2013	cogcc id 332837	project - task number 0213001.01	book and page MR01/MR02	surface - location NE/4, NE/4, SEC20, T5N, R65W
path\filename P:_Engineering\0213001.01\DRAWINGS\EXHIBITS\WELL PLATS\0213001-01EXWPOH2.dwg					



NOTES:

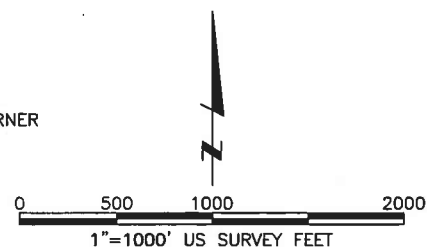
DISTANCES ARE MEASURED PERPENDICULAR TO NEAREST SECTION LINE AND ARE SHOWN ON THE SAME SIDE OF THE SECTION LINE WHERE THE WELL IS LOCATED.

THIS MAP DOES NOT REPRESENT A MONUMENTED BOUNDARY SURVEY.

SIXTEENTH CORNER LOCATIONS ARE COMPUTED, UNLESS OTHERWISE NOTED.

LEGEND

- ALIQUOT CORNER
- ⊙ BOTTOM HOLE
- ⊠ COMPUTED ALIQUOT CORNER FROM GLO RECORDS
- A.C. ALUMINUM CAP
- R.B. RANGE BOX



**LAMP RYNEARSON
& ASSOCIATES**

4715 Innovation Drive 970.226.0342 | P
Fort Collins, CO 80525 970.226.0879 | F
www.LRA-Inc.com

Proposed Well Location Exhibit
GP-Hillside 1-18-18
3 of 3

drawn by
SSZ

date
9/4/2013

cogcc id
332837

project - task number
0213001.01

book and page
MR01/MR02

surface - location
NE/4, NE/4, SEC20, T5N, R65W

path\filename P:_Engineering\0213001.01\DRAWINGS\EXHIBITS\WELL PLATS\0213001-01EXWPOH3.dwg