

# CCI Paradox Upstream, LLC

REV.	DATE	<p align="center"><b>AS DRILLED WELLBORE SCHEMATIC</b></p> <p align="center">South Nucla Unit 5-22</p> <p align="center">API No. 05-085-06046</p> <p align="center">SHL: 2,073' FNL 1,892' FWL (SENW) Sec. 5 T46N R14W</p> <p align="center">Unable to determine BHL from State records on file</p> <p align="center">Montrose County, Colorado</p>	DRAWN	C. Noonan
			APP'D	J. Warren
			SCALE	Drawn to Scale
			DATE	6/6/2014
		1 of 1 SHEETS		SHEET 1

Original lease operated by now insolvent Redwine Resources

**SPUD DATE**  
November 9, 2007

**ELEVATION**  
Ground - 6,064'

**CONDUCTOR CASING**  
Unable to determine size/grade

**SURFACE CASING**  
9-5/8" 36# J-55 ST&C

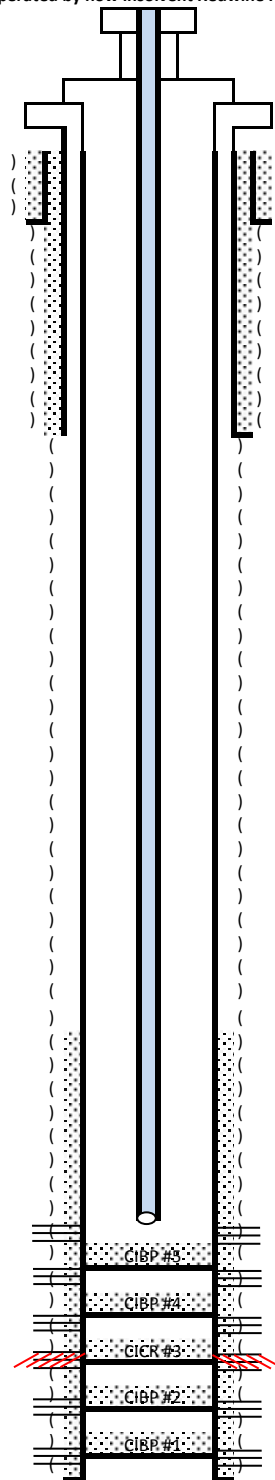
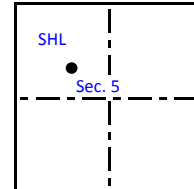
**PRODUCTION CASING**  
5-1/2" 17# P-110 LT&C

**TUBING**  
2-7/8" 6.5# L-80

## REDWINE RESOURCES FORMATION TOPS

Surface Form.  
0' - Projected

## AERIAL WELL LOCATION



Conductor Casing  
Set in place

Surface Casing  
12-1/4" hole to ±1,605'  
1,605' - 9-5/8" Cement to surface per tour report with unknown # of sacks

Production Casing  
8-3/4" hole to ±9,257'  
9,257' - 5.5" Cement from 9,257' to ±6,200' with unknown number of sacks

Tubing Detail  
7,850' - 249 jts 2-7/8" to surface

La Sal  
6,450'

Ismay  
7,180'

Hovenweep Shale  
7,650'

Gothic Shale  
7,950'

Desert Creek  
8,004'

Akah Salt  
8,270'

## Perforation & Initial Abandonment Data

Ismay, 2 spf (Abandoned 6/25/08)  
7,910' - 7,950' - open (No stimulation)

Desert Creek, 2 spf (Abandoned 9/19/08)  
CIBP #5 set at 8,020' with 2sx  
8,040' - 8,056' - open (No stimulation)  
CIBP #4 set at 8,120' with 2sx  
8,158' - 8,166' - open (No stimulation)  
CICR #3 set at 8,430' with 2sx  
8,476' - 8,582' - squeezed with 48sx (Frac'd w/ 1,133 bbls gelled h20, 270,000lbs 20/40 s)

Akah Salt, 2 spf (Abandoned 5/25/08)  
CIBP #2 set at 8,700' with 0sx  
8,786' - 8,804' - open (No stimulation)  
CIBP #1 set at 8,850' with 0sx  
9,034' - 9,114' - open (Frac'd w/ 925 bbls gelled h20, 166,000lbs 30/50 sand)

Total Measured Depth - 9,500' - PBD - 9,257'

Please note:

Existing well features in black

Key well features in blue

Operational changes in red

# CCI Paradox Upstream, LLC

REV.	DATE	<p><b>PROPOSED PLUG &amp; ABANDONMENT WELLBORE SCHEMATIC IF 5 1/2" CSG CAN BE REMOVED</b></p> <p>South Nucla Unit 5-22</p> <p>API No. 05-085-06046</p> <p>SHL: 2,073' FNL 1,892' FWL (SENW) Sec. 5 T46N R14W</p> <p>Unable to determine BHL from State records on file</p> <p>Montrose County, Colorado</p>	DRAWN	J. Warren	
			OPERATOR	CCI Paradox Upstream	
			SCALE	Not to scale	
			DATE	6/6/2014	
		1 of 1 SHEETS	SHEET	1	

**SPUD DATE**  
November 9, 2007

**ELEVATION**  
Ground - 6,064'

**CONDUCTOR CASING**  
Unable to determine size/grade

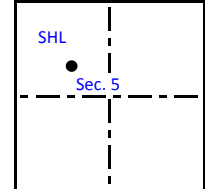
**SURFACE CASING**  
9-5/8" 36# J-55 ST&C

**PRODUCTION CASING**  
5-1/2" 17# P-110 LT&C

**TUBING**  
2-7/8" 6.5# L-80

Original lease operated by now insolvent Redwine Resources  
CCI agrees to plugging liability as leaseholder

**AERIAL WELL LOCATION**



## REDWINE RESOURCES FORMATION TOPS

Surface Form.  
0' - Projected

**Cut off csg below ground  
P&A Plate Welded On**

**Tubing Detail**  
Pull 7,850' - 249 jts 2-7/8

**Production Casing**  
8-3/4" hole to ±9,500'  
9,257' - 5 1/2" csg  
Cmt from 9,257' to ±6,200'  
Unknown number of sacks

La Sal  
6,450'

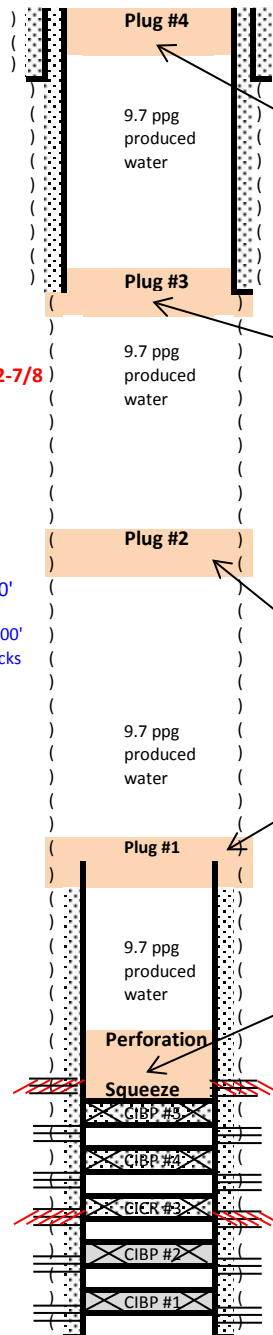
Ismay  
7,180'

Hovenweep Shale  
7,650'

Gothic Shale  
7,950'

Desert Creek  
8,004'

Akah Salt  
8,270'



Conductor Casing  
Depth unknown

**Proposed Cement Plug #4**  
Top job from 0' - 50' with 25 sx class G cement, 15.9 ppg, 1.13 ft/sx  
5 bbls fresh water spacer

Surface Casing  
12-1/4" hole to ±1,605'  
1,605' - 9-5/8" Cement to surface per tour report with unknown # of sx

**Proposed Cement Plug #3**  
Set a cement plug 50' above and below the csg shoe 1555' - 1655'  
40 sxs class G cement, 15.9 ppg, 1.13 cu ft/sx  
5 bbls fresh water spacer

**Proposed Cement Plug #2**  
Set cmt plug 3750' - 3850' with 40 sx class G cmt, 15.9 ppg, 1.13 cu ft/sx  
5 bbls fresh water spacer

**Proposed Cement Plug #1**  
Cut prod csg at approximately 6100' and remove from hole  
Set a cement plug 50' above and below the csg cut  
25 sxs class G cement, 15.9 ppg, 1.13 cu ft/sx  
5 bbls fresh water spacer

**Proposed Perforation Cement Squeeze**  
Squeeze perms 7,910' - 7,950' with 100 sx class G cmt, 15.9 ppg, 1.13 cu ft/sx  
5 bbl fresh water spacer

### Perforation & Initial Abandonment Data

Ismay, 2 spf (Abandoned 6/25/08)  
7,910' - 7,950' - open (No stimulation)  
Desert Creek, 2 spf (Abandoned 9/19/08)  
CIBP #5 set at 8,020' with 2sx  
8,040' - 8,056' - open (No stimulation)  
CIBP #4 set at 8,120' with 2sx  
8,158' - 8,166' - open (No stimulation)  
CIBP #3 set at 8,430' with 2sx  
8,476' - 8,582' - squeezed with 48sx (Frac'd w/ 1,133 bbls h2O, 270Klbs 20/40)  
Akah Salt, 2 spf (Abandoned 5/25/08)  
CIBP #2 set at 8,700' with 0sx  
8,786' - 8,804' - open (No stimulation)  
CIBP #1 set at 8,850' with 0sx  
9,034' - 9,114' - open (Frac'd w/ 925 bbls gelled h2O, 166, Klbs 30/50 sand)

Total Measured Depth - 9,500' - PBTD - 9,257'

Please note:

Existing well features in black

Key well features in blue

Operational changes in red

Tops taken from Redwine WCR on file with COGCC