



Weatherford[®]

Drilling Services

Proposal



PAD 21B

WELL: 14/15-8-21

GARFIELD COUNTY, CO

WELL FILE: **PLAN 1**

JUNE 22, 2011

Weatherford International, Ltd.
410 17th Street, Suite 400
Denver, CO 80202 USA
+1.303.825.6558 Main
www.weatherford.com



Project: Garfield County, CO
Site: Pad 21B
Well: 14/15-8-21
GL: 6932.00
KB: 6952.00



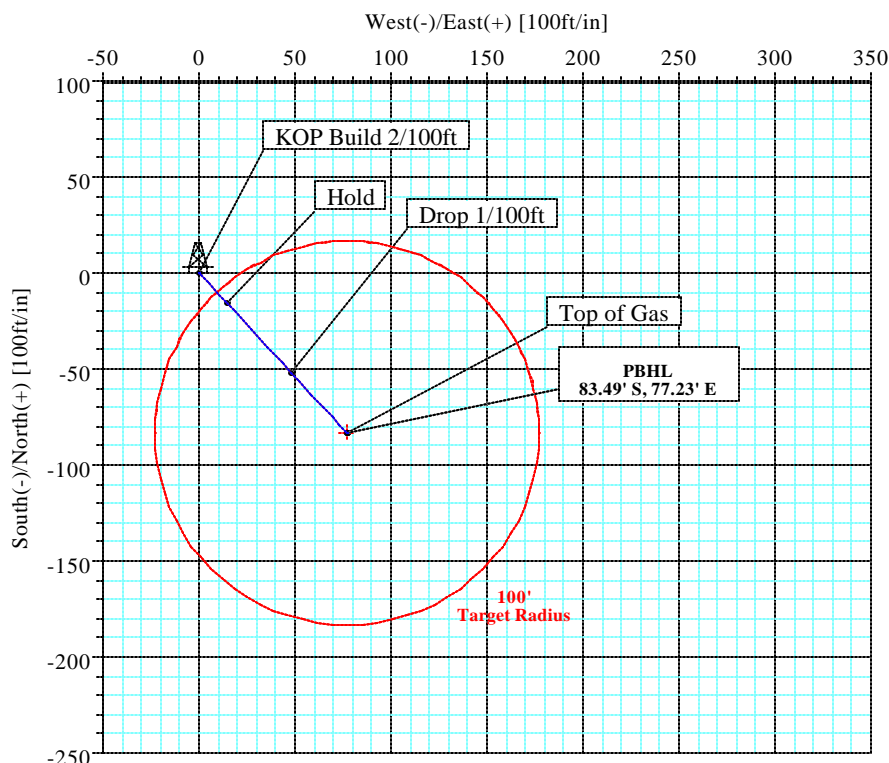
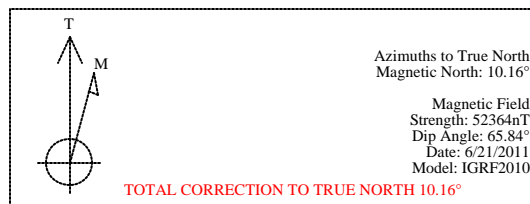
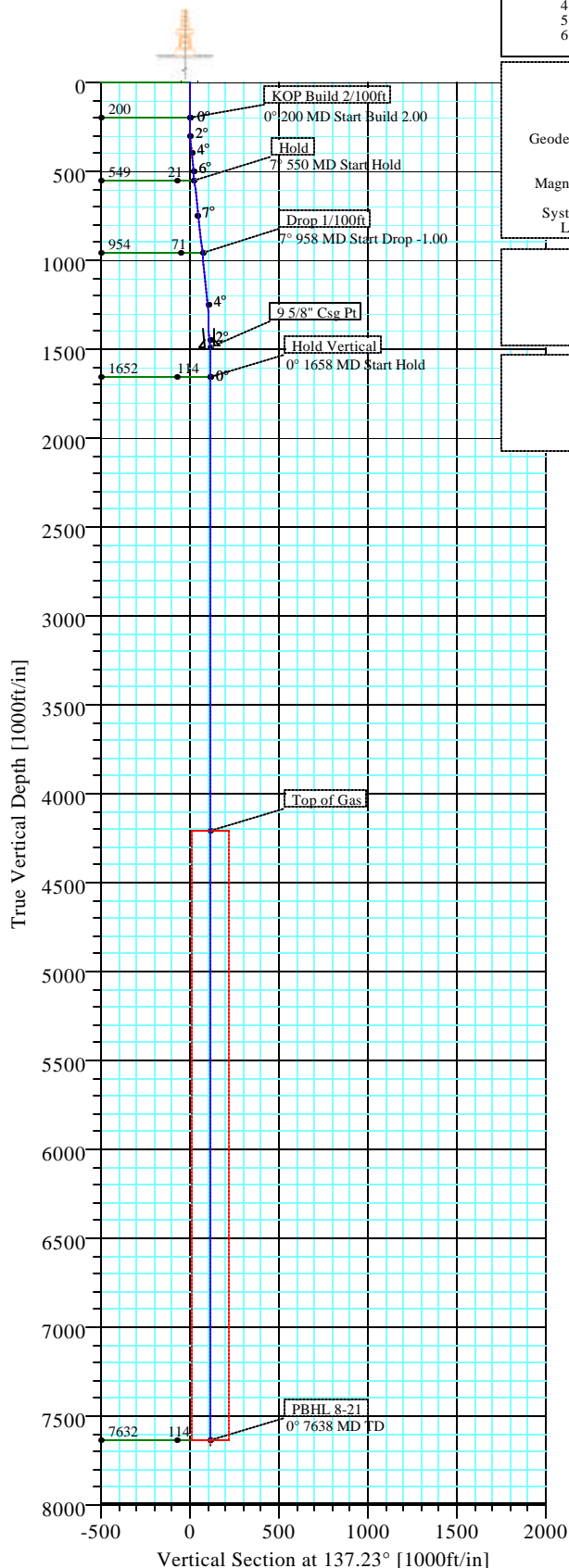
SECTION DETAILS										
Sec	MD	Inc	Azi	TVD	+N/-S	+E/-W	DLeg	TFace	VSec	Target
1	0.00	0.00	137.23	0.00	0.00	0.00	0.00	0.00	0.00	
2	200.00	0.00	137.23	200.00	0.00	0.00	0.00	0.00	0.00	
3	550.00	7.00	137.23	549.13	-15.67	14.50	2.00	137.23	21.35	
4	957.59	7.00	137.23	953.68	-52.14	48.23	0.00	0.00	71.03	
5	1657.59	0.00	137.23	1651.94	-83.49	77.23	1.00	180.00	113.73	
6	7637.65	0.00	137.23	7632.00	-83.49	77.23	0.00	0.00	113.73	PBHL 8-21

FIELD DETAILS	
Garfield County, CO	
Geodetic System:	US State Plane Coordinate System 1983
Ellipsoid:	GRS 1980
Zone:	Colorado, Central Zone
Magnetic Model:	IGRF2010
System Datum:	Mean Sea Level
Local North:	True North

SITE DETAILS	
PAD 21B	
Site Centre Northing:	1618762.06
Easting:	2420967.93
Ground Level:	6932.00
Positional Uncertainty:	0.00
Convergence:	-1.29

WELL DETAILS								
Name	+N/-S	+E/-W	Northing	Easting	Latitude	Longitude	Slot	
14/15-8-21	-3.90	15.52	1618757.82	2420983.35	39°30'51.488N	107°33'09.063W	N/A	

TARGET DETAILS							
Name	TVD	+N/-S	+E/-W	Northing	Easting	Shape	
PBHL 8-21	7632.00	-83.49	77.23	1618672.61	2421058.68	Circle (Radius: 100)	





Weatherford International, Inc.

Directional Plan Report



Company: DEJOUR ENERGY INC	Date: 6/22/2011	Time: 09:57:53	Page: 1
Field: Garfield County, CO	Co-ordinate(NE) Reference: Well: 14/15-8-21, True North		
Site: PAD 21B	Vertical (TVD) Reference: SITE 6952.0		
Well: 14/15-8-21	Section (VS) Reference: Well (0.00N,0.00E,137.23Azi)		
Wellpath: Original	Survey Calculation Method: Minimum Curvature	Db: Sybase	

Field: Garfield County, CO

Map System: US State Plane Coordinate System 1983
Geo Datum: GRS 1980
Sys Datum: Mean Sea Level

Map Zone: Colorado, Central Zone
Coordinate System: Well Centre
Geomagnetic Model: IGRF2010

Site: PAD 21B

Site Position:	Northing: 1618762.06 ft	Latitude: 39 30 51.527 N
From: Map	Easting: 2420967.93 ft	Longitude: 107 33 9.261 W
Position Uncertainty: 0.00 ft		North Reference: True
Ground Level: 6932.00 ft		Grid Convergence: -1.29 deg

Well: 14/15-8-21

Slot Name:

Well Position: +N/-S -3.90 ft	Northing: 1618757.82 ft	Latitude: 39 30 51.488 N
+E/-W 15.52 ft	Easting: 2420983.35 ft	Longitude: 107 33 9.063 W
Position Uncertainty: 0.00 ft		

Wellpath: Original

Current Datum: SITE	Height 6952.00 ft	Drilled From: Surface
Magnetic Data: 6/21/2011		Tie-on Depth: 0.00 ft
Field Strength: 52364 nT		Above System Datum: Mean Sea Level
Vertical Section: Depth From (TVD)	+N/-S	Declination: 10.16 deg
ft	ft	Mag Dip Angle: 65.84 deg
		+E/-W
		ft
		Direction
		deg
0.00	0.00	0.00 137.23

Plan: Plan #1

Date Composed: 6/21/2011
Version: 1
Tied-to: From Surface

Principal: Yes

Plan Section Information

MD ft	Incl deg	Azim deg	TVD ft	+N/-S ft	+E/-W ft	DLS deg/100ft	Build deg/100ft	Turn deg/100ft	TFO deg	Target
0.00	0.00	137.23	0.00	0.00	0.00	0.00	0.00	0.00	0.00	
200.00	0.00	137.23	200.00	0.00	0.00	0.00	0.00	0.00	0.00	
550.00	7.00	137.23	549.13	-15.67	14.50	2.00	2.00	0.00	137.23	
957.59	7.00	137.23	953.68	-52.14	48.23	0.00	0.00	0.00	0.00	
1657.59	0.00	137.23	1651.94	-83.49	77.23	1.00	-1.00	0.00	180.00	
7637.65	0.00	137.23	7632.00	-83.49	77.23	0.00	0.00	0.00	0.00	PBHL 8-21

Survey

MD ft	Incl deg	Azim deg	TVD ft	N/S ft	E/W ft	VS ft	DLS deg/100ft	MapN ft	MapE ft	Comment
0.00	0.00	137.23	0.00	0.00	0.00	0.00	0.00	1618757.82	2420983.35	
100.00	0.00	137.23	100.00	0.00	0.00	0.00	0.00	1618757.82	2420983.35	
200.00	0.00	137.23	200.00	0.00	0.00	0.00	0.00	1618757.82	2420983.35	KOP Build 2/100ft
300.00	2.00	137.23	299.98	-1.28	1.19	1.75	2.00	1618756.51	2420984.51	
400.00	4.00	137.23	399.84	-5.12	4.74	6.98	2.00	1618752.59	2420987.98	
500.00	6.00	137.23	499.45	-11.52	10.66	15.69	2.00	1618746.06	2420993.75	
550.00	7.00	137.23	549.13	-15.67	14.50	21.35	2.00	1618741.82	2420997.50	Hold
600.00	7.00	137.23	598.76	-20.15	18.64	27.45	0.00	1618737.25	2421001.53	
700.00	7.00	137.23	698.01	-29.09	26.91	39.63	0.00	1618728.12	2421009.60	
800.00	7.00	137.23	797.27	-38.04	35.19	51.82	0.00	1618718.99	2421017.68	
900.00	7.00	137.23	896.52	-46.99	43.47	64.01	0.00	1618709.86	2421025.75	
957.59	7.00	137.23	953.68	-52.14	48.23	71.03	0.00	1618704.60	2421030.40	Drop 1/100ft
1000.00	6.58	137.23	995.79	-55.82	51.64	76.04	1.00	1618700.85	2421033.72	
1100.00	5.58	137.23	1095.23	-63.59	58.82	86.62	1.00	1618692.92	2421040.73	
1200.00	4.58	137.23	1194.84	-70.08	64.83	95.47	1.00	1618686.29	2421046.59	



Weatherford International, Inc.

Directional Plan Report



Company: DEJOUR ENERGY INC
Field: Garfield County, CO
Site: PAD 21B
Well: 14/15-8-21
Wellpath: Original

Date: 6/22/2011
Co-ordinate(NE) Reference: Well: 14/15-8-21, True North
Vertical (TVD) Reference: SITE 6952.0
Section (VS) Reference: Well (0.00N,0.00E,137.23Azi)
Survey Calculation Method: Minimum Curvature
Db: Sybase

Page: 2

Survey

MD ft	Incl deg	Azim deg	TVD ft	N/S ft	E/W ft	VS ft	DLS deg/100ft	MapN ft	MapE ft	Comment
1300.00	3.58	137.23	1294.58	-75.30	69.66	102.58	1.00	1618680.96	2421051.29	
1400.00	2.58	137.23	1394.44	-79.24	73.30	107.94	1.00	1618676.94	2421054.85	
1500.00	1.58	137.23	1494.37	-81.90	75.76	111.57	1.00	1618674.23	2421057.25	9 5/8" Csg Pt
1600.00	0.58	137.23	1594.35	-83.27	77.04	113.44	1.00	1618672.82	2421058.49	
1657.59	0.00	137.23	1651.94	-83.49	77.23	113.73	1.00	1618672.61	2421058.68	Hold Vertical
1700.00	0.00	137.23	1694.35	-83.49	77.23	113.73	0.00	1618672.61	2421058.68	
1800.00	0.00	137.23	1794.35	-83.49	77.23	113.73	0.00	1618672.61	2421058.68	
1900.00	0.00	137.23	1894.35	-83.49	77.23	113.73	0.00	1618672.61	2421058.68	
2000.00	0.00	137.23	1994.35	-83.49	77.23	113.73	0.00	1618672.61	2421058.68	
2100.00	0.00	137.23	2094.35	-83.49	77.23	113.73	0.00	1618672.61	2421058.68	
2200.00	0.00	137.23	2194.35	-83.49	77.23	113.73	0.00	1618672.61	2421058.68	
2300.00	0.00	137.23	2294.35	-83.49	77.23	113.73	0.00	1618672.61	2421058.68	
2400.00	0.00	137.23	2394.35	-83.49	77.23	113.73	0.00	1618672.61	2421058.68	
2500.00	0.00	137.23	2494.35	-83.49	77.23	113.73	0.00	1618672.61	2421058.68	
2600.00	0.00	137.23	2594.35	-83.49	77.23	113.73	0.00	1618672.61	2421058.68	
2700.00	0.00	137.23	2694.35	-83.49	77.23	113.73	0.00	1618672.61	2421058.68	
2800.00	0.00	137.23	2794.35	-83.49	77.23	113.73	0.00	1618672.61	2421058.68	
2900.00	0.00	137.23	2894.35	-83.49	77.23	113.73	0.00	1618672.61	2421058.68	
3000.00	0.00	137.23	2994.35	-83.49	77.23	113.73	0.00	1618672.61	2421058.68	
3100.00	0.00	137.23	3094.35	-83.49	77.23	113.73	0.00	1618672.61	2421058.68	
3200.00	0.00	137.23	3194.35	-83.49	77.23	113.73	0.00	1618672.61	2421058.68	
3300.00	0.00	137.23	3294.35	-83.49	77.23	113.73	0.00	1618672.61	2421058.68	
3400.00	0.00	137.23	3394.35	-83.49	77.23	113.73	0.00	1618672.61	2421058.68	
3500.00	0.00	137.23	3494.35	-83.49	77.23	113.73	0.00	1618672.61	2421058.68	
3600.00	0.00	137.23	3594.35	-83.49	77.23	113.73	0.00	1618672.61	2421058.68	
3700.00	0.00	137.23	3694.35	-83.49	77.23	113.73	0.00	1618672.61	2421058.68	
3800.00	0.00	137.23	3794.35	-83.49	77.23	113.73	0.00	1618672.61	2421058.68	
3900.00	0.00	137.23	3894.35	-83.49	77.23	113.73	0.00	1618672.61	2421058.68	
4000.00	0.00	137.23	3994.35	-83.49	77.23	113.73	0.00	1618672.61	2421058.68	
4100.00	0.00	137.23	4094.35	-83.49	77.23	113.73	0.00	1618672.61	2421058.68	
4200.00	0.00	137.23	4194.35	-83.49	77.23	113.73	0.00	1618672.61	2421058.68	
4217.65	0.00	137.23	4212.00	-83.49	77.23	113.73	0.00	1618672.61	2421058.68	Top of Gas
4300.00	0.00	137.23	4294.35	-83.49	77.23	113.73	0.00	1618672.61	2421058.68	
4400.00	0.00	137.23	4394.35	-83.49	77.23	113.73	0.00	1618672.61	2421058.68	
4500.00	0.00	137.23	4494.35	-83.49	77.23	113.73	0.00	1618672.61	2421058.68	
4600.00	0.00	137.23	4594.35	-83.49	77.23	113.73	0.00	1618672.61	2421058.68	
4700.00	0.00	137.23	4694.35	-83.49	77.23	113.73	0.00	1618672.61	2421058.68	
4800.00	0.00	137.23	4794.35	-83.49	77.23	113.73	0.00	1618672.61	2421058.68	
4900.00	0.00	137.23	4894.35	-83.49	77.23	113.73	0.00	1618672.61	2421058.68	
5000.00	0.00	137.23	4994.35	-83.49	77.23	113.73	0.00	1618672.61	2421058.68	
5100.00	0.00	137.23	5094.35	-83.49	77.23	113.73	0.00	1618672.61	2421058.68	
5200.00	0.00	137.23	5194.35	-83.49	77.23	113.73	0.00	1618672.61	2421058.68	
5300.00	0.00	137.23	5294.35	-83.49	77.23	113.73	0.00	1618672.61	2421058.68	
5400.00	0.00	137.23	5394.35	-83.49	77.23	113.73	0.00	1618672.61	2421058.68	
5500.00	0.00	137.23	5494.35	-83.49	77.23	113.73	0.00	1618672.61	2421058.68	
5600.00	0.00	137.23	5594.35	-83.49	77.23	113.73	0.00	1618672.61	2421058.68	
5700.00	0.00	137.23	5694.35	-83.49	77.23	113.73	0.00	1618672.61	2421058.68	
5800.00	0.00	137.23	5794.35	-83.49	77.23	113.73	0.00	1618672.61	2421058.68	
5900.00	0.00	137.23	5894.35	-83.49	77.23	113.73	0.00	1618672.61	2421058.68	
6000.00	0.00	137.23	5994.35	-83.49	77.23	113.73	0.00	1618672.61	2421058.68	
6100.00	0.00	137.23	6094.35	-83.49	77.23	113.73	0.00	1618672.61	2421058.68	
6200.00	0.00	137.23	6194.35	-83.49	77.23	113.73	0.00	1618672.61	2421058.68	
6300.00	0.00	137.23	6294.35	-83.49	77.23	113.73	0.00	1618672.61	2421058.68	



Weatherford International, Inc.

Directional Plan Report



Company: DEJOUR ENERGY INC	Date: 6/22/2011	Time: 09:57:53	Page: 3
Field: Garfield County, CO	Co-ordinate(NE) Reference:	Well: 14/15-8-21, True North	
Site: PAD 21B	Vertical (TVD) Reference:	SITE 6952.0	
Well: 14/15-8-21	Section (VS) Reference:	Well (0.00N,0.00E,137.23Azi)	
Wellpath: Original	Survey Calculation Method:	Minimum Curvature	Db: Sybase

Survey

MD ft	Incl deg	Azim deg	TVD ft	N/S ft	E/W ft	VS ft	DLS deg/100ft	MapN ft	MapE ft	Comment
6400.00	0.00	137.23	6394.35	-83.49	77.23	113.73	0.00	1618672.61	2421058.68	
6500.00	0.00	137.23	6494.35	-83.49	77.23	113.73	0.00	1618672.61	2421058.68	
6600.00	0.00	137.23	6594.35	-83.49	77.23	113.73	0.00	1618672.61	2421058.68	
6700.00	0.00	137.23	6694.35	-83.49	77.23	113.73	0.00	1618672.61	2421058.68	
6800.00	0.00	137.23	6794.35	-83.49	77.23	113.73	0.00	1618672.61	2421058.68	
6900.00	0.00	137.23	6894.35	-83.49	77.23	113.73	0.00	1618672.61	2421058.68	
7000.00	0.00	137.23	6994.35	-83.49	77.23	113.73	0.00	1618672.61	2421058.68	
7100.00	0.00	137.23	7094.35	-83.49	77.23	113.73	0.00	1618672.61	2421058.68	
7200.00	0.00	137.23	7194.35	-83.49	77.23	113.73	0.00	1618672.61	2421058.68	
7300.00	0.00	137.23	7294.35	-83.49	77.23	113.73	0.00	1618672.61	2421058.68	
7400.00	0.00	137.23	7394.35	-83.49	77.23	113.73	0.00	1618672.61	2421058.68	
7500.00	0.00	137.23	7494.35	-83.49	77.23	113.73	0.00	1618672.61	2421058.68	
7600.00	0.00	137.23	7594.35	-83.49	77.23	113.73	0.00	1618672.61	2421058.68	
7637.65	0.00	137.23	7632.00	-83.49	77.23	113.73	0.00	1618672.61	2421058.68	PBHL 8-21

Targets

Name	Description	Dir.	TVD ft	+N/-S ft	+E/-W ft	Map Northing ft	Map Easting ft	<---- Latitude ---->			<--- Longitude --->				
	Dip.							Deg	Min	Sec	Deg	Min	Sec		
PBHL 8-21			7632.00	-83.49	77.23	1618672.61	2421058.68	39	30	50.663	N	107	33	8.077	W
-Circle (Radius: 100)															
-Plan hit target															

Casing Points

MD ft	TVD ft	Diameter in	Hole Size in	Name
1500.00	1494.37	9.625	12.250	9 5/8" Csg Pt

Annotation

MD ft	TVD ft	
200.00	200.00	KOP Build 2/100ft
550.00	549.13	Hold
957.59	953.68	Drop 1/100ft
1657.59	1651.94	Hold Vertical
4217.65	4212.00	Top of Gas
7637.65	7632.00	PBHL 8-21

Formations

MD	TVD	Formations	Lithology	Dip Angle	Dip Direction