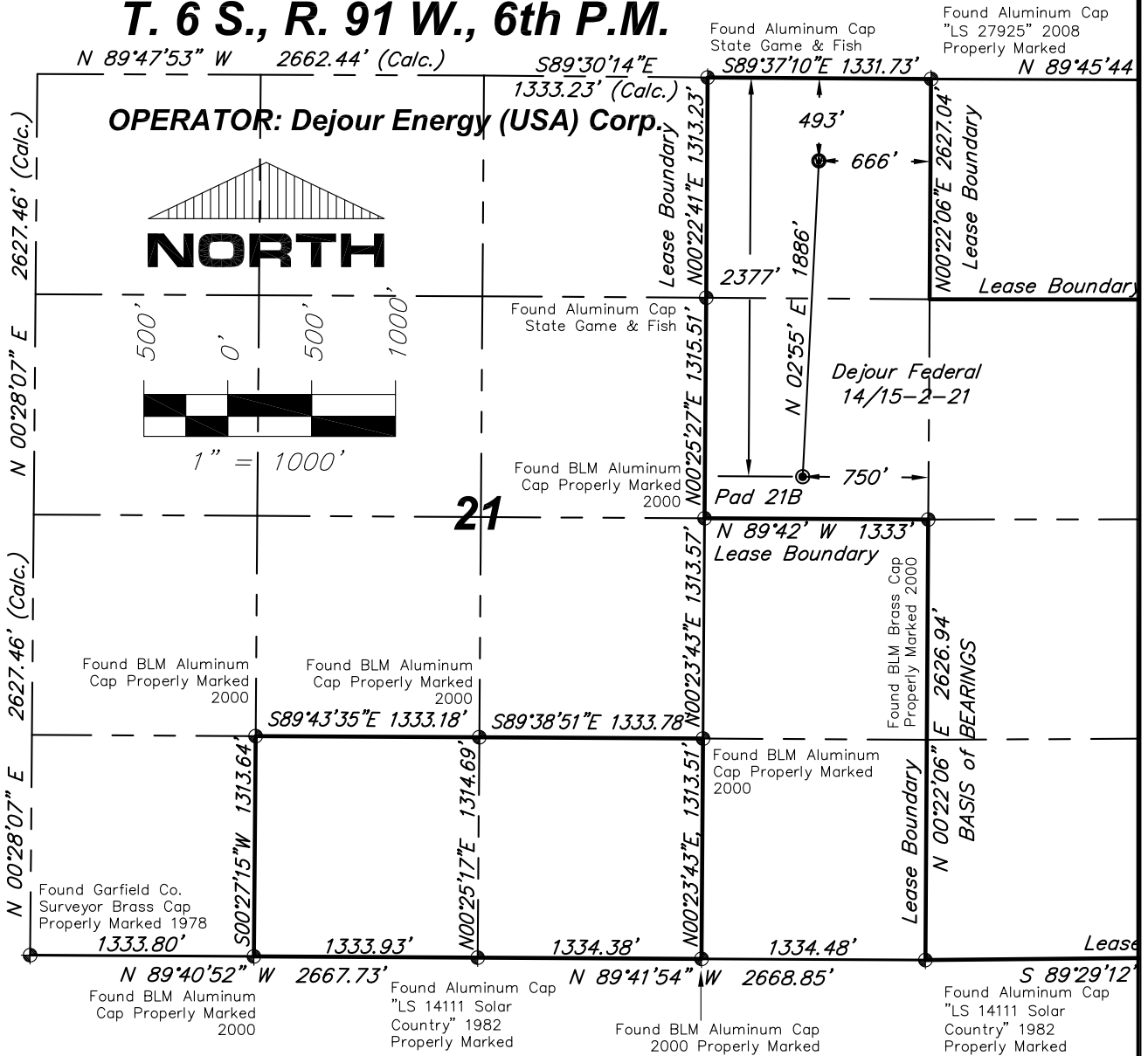


T. 6 S., R. 91 W., 6th P.M.



NOTES:

- 1: GEODETIC POSITIONS ARE SHOWN IN DECIMAL DEGREES BASED ON NAD83.
- 2: UNITS OF MEASUREMENT: U.S. SURVEY FOOT
- 3: EXISTING GROUND ELEVATION: 6932.6'. PROPOSED PAD ELEVATION: 6932.37'. ELEVATIONS HAVE BEEN DERIVED USING GPS OBSERVATIONS, GEOID 09, NAVD 88.
- 4: ALL SURFACE AND BOTTOM HOLE LOCATIONS ARE MEASURED AT 90° ANGLES FROM SECTION LINES.
- 5: BASIS OF BEARINGS: N 00°22'06" E BETWEEN FOUND MONUMENT AS SHOWN HEREON.
- 6: SEE SHEET 1E FOR EXISTING IMPROVEMENTS LOCATED IN THE VICINITY OF PROPOSED WELL.
- 7: SURFACE USE: WILDLIFE AREA
- 8: USGS QUAD MAP: NEW CASTLE
- 9: GPS OPERATOR: KYLE TESKY OBSERVED AN AVERAGE PDOP OF ≤ 3.0 FOR ALL SURVEY MEASUREMENTS DEPICTED ON THIS AND SUBSEQUENT SHEETS. ALL GPS OBSERVATIONS ARE IN COMPLIANCE WITH COGCC RULE NO. 215

LEGEND:

- ⊕ - FOUND MONUMENT AS DESCRIBED HEREON
- ⊙ - SURFACE HOLE LOCATION (SHL)
- ⊗ - BOTTOM HOLE LOCATION (BHL)

SURVEYORS STATEMENT:

I, ELWOOD BARRY GILES, BEING A REGISTERED LAND SURVEYOR IN THE STATE OF COLORADO, DO HEREBY CERTIFY THAT THIS PLAT REPRESENTS A SURVEY PERFORMED BY ME OR UNDER MY DIRECT SUPERVISION BETWEEN APRIL, 2010 & JANUARY, 2011, AND IS TRUE TO THE BEST OF MY KNOWLEDGE AND BELIEF. THE REFERENCE POINT WAS STAKED IN THE FIELD AS SHOWN HEREON APRIL 21, 2010.

Elwood Barry Giles
ELWOOD BARRY GILES
COLORADO LS 38150

Aug. 9, 2011
DATE

FEDERAL 14/15-2-21 NAD83	SECTION LINE TIES
SURFACE HOLE LOCATION	
LATITUDE = 39.514317°N	FEL = 750'
LONGITUDE = 107.552527°W	FNL = 2377'
BOTTOM HOLE LOCATION	
LATITUDE = 39.519491°N	FEL = 666'
LONGITUDE = 107.552337°W	FNL = 493'

Rev. 8/9/11: Update Cert.



SGM INC.
118 W. 6th Street, Suite 200
Glenwood Springs, Co. 81601
(970)945-1004 www.SGM-Inc.com
320 Third St. Meeker, Co. 81641

1" = 1000'

Sheet 1A of 9

Federal 14/15-2-21

Well Location Plat - Federal 14/15-2-21
NE 1/4 NE 1/4, Section 21, T.6S., R.91W., 6TH P.M.

Job# 2010-112.001

Date: 6/15/2011

By: BG

File: APD_Pad21B