

**WELL LOCATION DATA:**  
 LATITUDE: 40.39045°N  
 LONGITUDE: 104.68251°W  
 ELEVATION: 4674'  
 PDOP: 1.7  
 OPERATOR: C HOLMES  
 SURFACE USE: INDUSTRIAL  
 PROPOSED GROUND ELEVATION: 4673.0'

# **LAND SURVEYOR'S CERTIFICATION**

LAMP, RYNEARSON & ASSOCIATES, INC., OF FT. COLLINS, COLORADO HAS, IN ACCORDANCE WITH A REQUEST FROM COLLIN RICHARDSON FOR MINERAL RESOURCES, INC., DETERMINED THE SURFACE LOCATION OF THE WELL DESIGNATED AS GP-JACKSON 5-18-18 TO BE 513' FROM THE NORTH LINE AND 1305' FROM THE EAST LINE OF SECTION 20, TOWNSHIP 5 NORTH, RANGE 65 WEST OF THE 6TH P.M., WELD COUNTY, COLORADO.

## **NOTES:**

DISTANCES ARE MEASURED PERPENDICULAR TO NEAREST SECTION LINE AND ARE SHOWN ON THE SAME SIDE OF THE SECTION LINE WHERE THE WELL IS LOCATED.

THIS MAP DOES NOT REPRESENT A MONUMENTED BOUNDARY SURVEY.

SIXTEENTH CORNER LOCATIONS ARE COMPUTED, UNLESS OTHERWISE NOTED.

## **BASIS OF BEARING:**

THE NORTH LINE OF THE NORTHEAST QUARTER OF SECTION 20-T5N-R65W BEARS N89°44'34\"/>

ELEVATIONS ARE BASED ON NAVD 88, AS OBSERVED FROM GPS OBSERVATIONS

## **LEGEND**

- ⊕ ALIQUOT CORNER A.C. ALUMINUM CAP
- ⊙ BOTTOM HOLE R.B. RANGE BOX
- ⊙ PROPOSED WELL

DAVID JOHN BERGLUND  
 COLORADO PLS 38199

DATE OF SURVEY: 8/19/2010 (SECTION CONTROL)  
 DATE OF SURVEY: 08/23/2013 (WELL LOCATION)



0 500 1000 2000  
 1"=1000' US SURVEY FEET

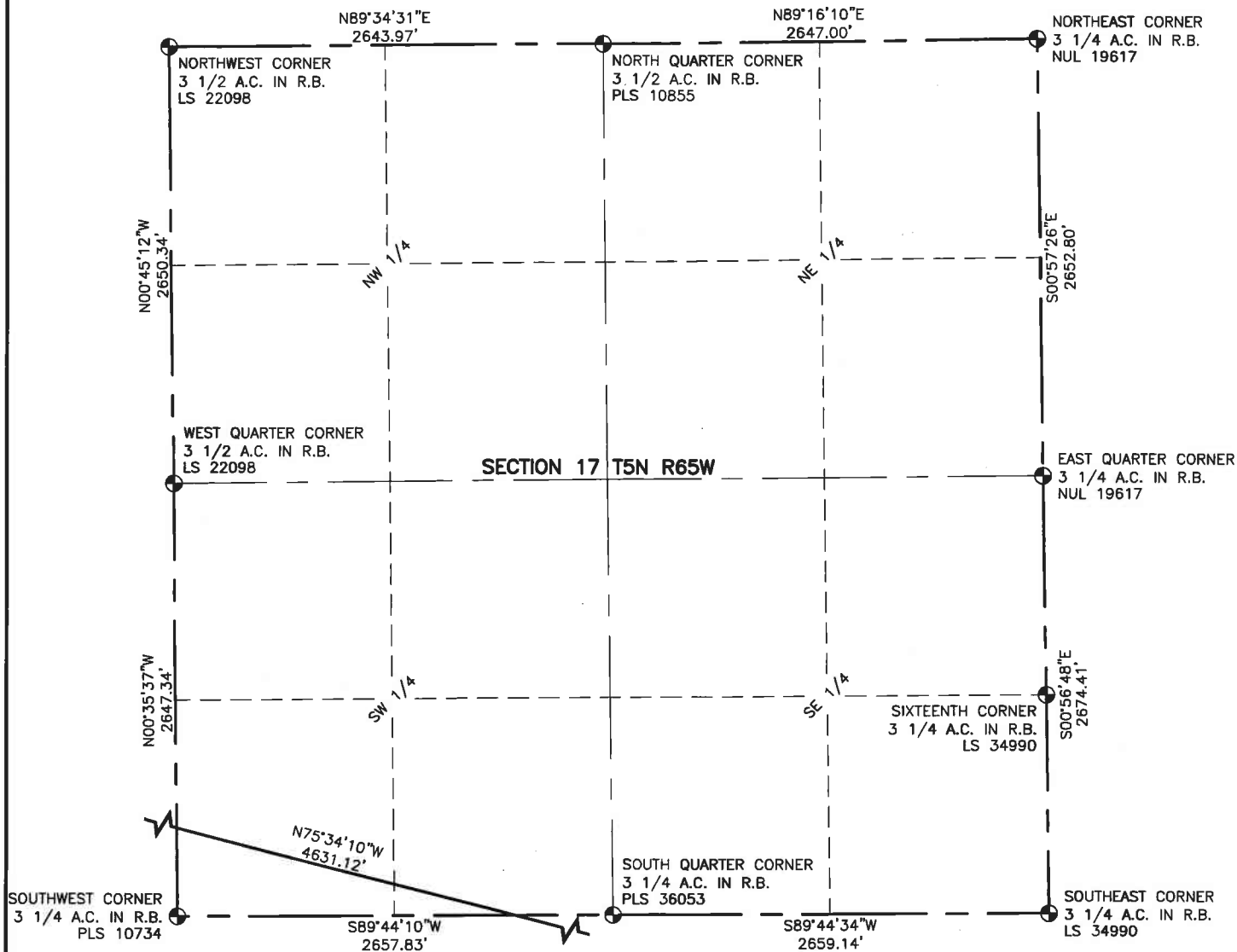


**LAMP RYNEARSON  
 & ASSOCIATES**

4715 Innovation Drive 970.226.0342 | P  
 Fort Collins, CO 80525 970.226.0879 | F  
 www.LRA-Inc.com

Proposed Well Location Exhibit  
 GP-Jackson 5-18-18  
 1 of 3

drawn by SSZ	date 9/4/2013	cogcc id 332837	project - task number 0213001.01	book and page MR01/MR02	surface - location NE/4, NE/4, SEC20, T5N, R65W
path\\filename P:\_Engineering\0213001.01\DRAWINGS\EXHIBITS\WELL PLATS\0213001-01EXWPOG1.dwg					





#### NOTES:

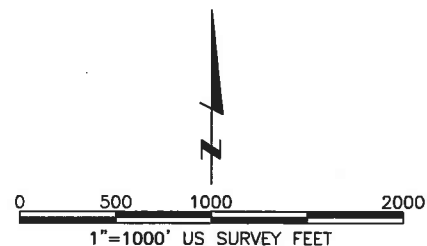
DISTANCES ARE MEASURED PERPENDICULAR TO NEAREST SECTION LINE AND ARE SHOWN ON THE SAME SIDE OF THE SECTION LINE WHERE THE WELL IS LOCATED.

THIS MAP DOES NOT REPRESENT A MONUMENTED BOUNDARY SURVEY.

SIXTEENTH CORNER LOCATIONS ARE COMPUTED, UNLESS OTHERWISE NOTED.

#### LEGEND

-  ALIQUOT CORNER
-  BOTTOM HOLE
- A.C. ALUMINUM CAP
- R.B. RANGE BOX



**LAMP RYNEARSON  
& ASSOCIATES**

4715 Innovation Drive 970.226.0342 | P  
Fort Collins, CO 80525 970.226.0879 | F  
www.LRA-inc.com

Proposed Well Location Exhibit  
GP-Jackson 5-18-18  
2 of 3

drawn by  
SSZ

date  
9/4/2013

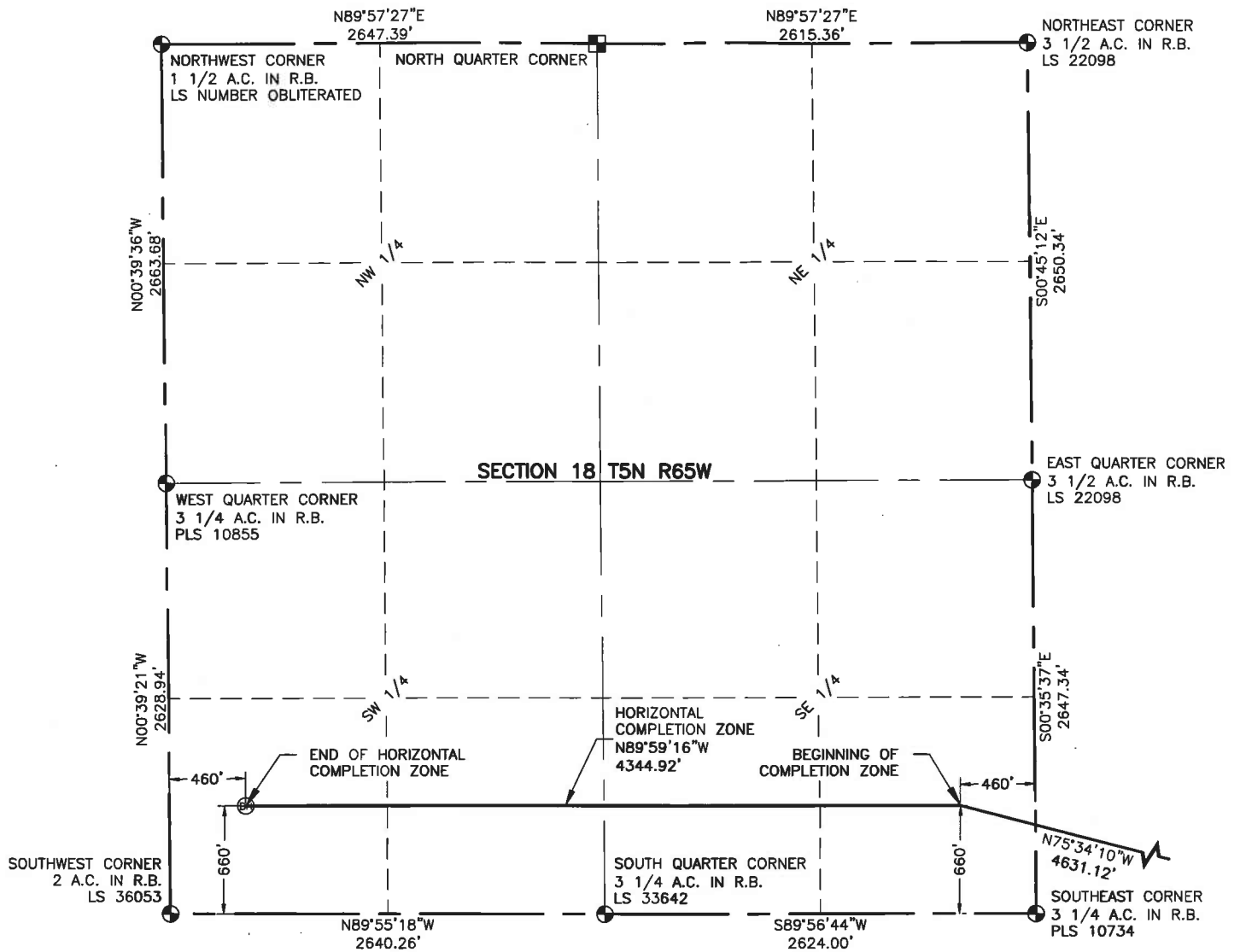
cogcc id  
332837

project - task number  
0213001.01

book and page  
MR01/MR02

surface - location  
NE/4, NE/4, SEC20, T5N, R65W

path\filename P:\\_Engineering\0213001.01\DRAWINGS\EXHIBITS\WELL PLATS\0213001-01EXWPOG2.dwg



#### NOTES:

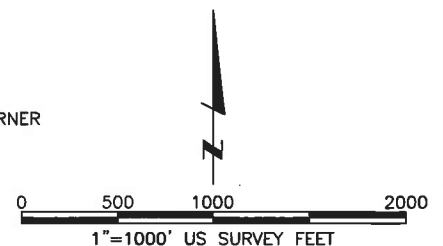
DISTANCES ARE MEASURED PERPENDICULAR TO NEAREST SECTION LINE AND ARE SHOWN ON THE SAME SIDE OF THE SECTION LINE WHERE THE WELL IS LOCATED.

THIS MAP DOES NOT REPRESENT A MONUMENTED BOUNDARY SURVEY.

SIXTEENTH CORNER LOCATIONS ARE COMPUTED, UNLESS OTHERWISE NOTED.

#### LEGEND

- ALIQUOT CORNER
- ⊙ BOTTOM HOLE
- COMPUTED ALIQUOT CORNER FROM GLO RECORDS
- A.C. ALUMINUM CAP
- R.B. RANGE BOX



**LAMP RYNEARSON  
& ASSOCIATES**

4715 Innovation Drive 970.226.0342 | P  
Fort Collins, CO 80525 970.226.0879 | F  
www.LRA-Inc.com

Proposed Well Location Exhibit  
GP-Jackson 5-18-18  
3 of 3

drawn by  
SSZ

date  
9/4/2013

cogcc id  
332837

project - task number  
0213001.01

book and page  
MR01/MR02

surface - location  
NE/4, NE/4, SEC20, T5N, R65W

path\filename P:\\_Engineering\0213001.01\DRAWINGS\EXHIBITS\WELL PLATS\0213001-01EXWPOG3.dwg