

**ANADARKO PETROLEUM CORP - EBUS
DO NOT MAIL - PO BOX 4995
THE WOODLANDS, Texas**

Elliott 31N-18HZ

Majors 42

Post Job Summary

Cement Surface Casing

Date Prepared: 6/3/2014
Version: 1

Service Supervisor: SMITH, AARON

Submitted by: PRUDHOMME, JOSHUA

HALLIBURTON

HALLIBURTON

Wellbore Geometry

Job Tubulars					MD	
Type	Description	Size in	ID in	Wt lbm/ft	Top ft	Bottom ft
Open Hole Section	OPEN HOLE		13.500		0.00	1,062.00
Casing	SURFACE CASING	9.63	8.921	36.00	0.00	1,061.00

HALLIBURTON

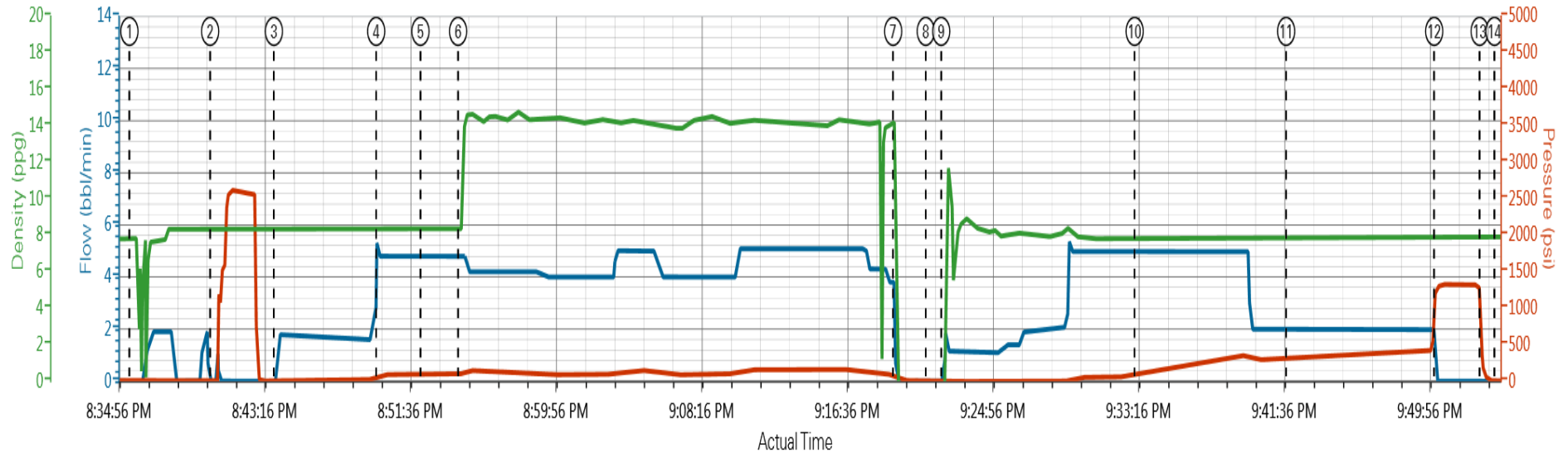
Pumping Schedule

Stage /Plug #	Fluid #	Fluid Type	Fluid Name	Surface Density lbm/gal	Avg Rate bbl/min	Surface Volume	Downhole Volume
1	1	Spacer	Fresh Water Spacer	8.33	2.0	10.0 bbl	10.0 bbl
1	1	Spacer	Fresh Water Spacer	8.40	5.0	12.0 bbl	12.0 bbl
1	1	Spacer	Fresh Water Spacer	8.33	5.0	10.0 bbl	10.0 bbl
1	2	Cement Slurry	SwiftCem B2	14.20	4.5	400.0 sacks	400.0 sacks

HALLIBURTON

Data Acquisition

ANADARKO PETROLEUM ELLIOT 31N-18HZ SURFACE



Comb Pump Rate (bb/min) 0 PS Pump Press (psi) 0 DH Density (ppg) -0.58

- ① Start Job 0;2;7.82 ④ Pump Spacer 2 4;8;74;8.31 ⑦ Shutdown 0;70;-0.18 ⑩ Spacer Returns to Surface 5;94;7.87 ⑬ Check Floats 0;256;7.93
- ② Test Lines 0;9;8.34 ⑤ Pump Spacer 14 8;100;8.38 ⑧ Drop Top Plug 0;6;-0.51 ⑪ Cement Returns to Surface 2;320;7.99 ⑭ End Job 0;2;7.91
- ③ Pump Spacer 10;3;8.38 ⑥ Pump Cement 4 8;103;8.33 ⑨ Pump Displacement 0;5;-0.52 ⑫ Bump Plug 0;1283;7.9

▼ HALLIBURTON | iCem® Service

Created: 2014-02-26 19:30:11, Version: 3.0.121

Edit

Customer: ANADARKO PETROLEUM CORP -
EBUS

Job Date: 2/26/2014 7:32:57 PM

Well: ELLIOT 31N-18HZ

Representative: AARON SMITH

Sales Order #: 901150692

HALLIBURTON

Service Supervisor Reports

Job Log

Date/Time	Chart #	Activity Code	Pump Rate	Cum Vol	Pump	Pressure (psig)	Comments
02/26/2014 15:30		Casing on Bottom					
02/26/2014 15:30		Circulate Well					
02/26/2014 18:30		Arrive at Location from Service Center					WITH ALL EQUIPMENT AND MATERIALS, JOB WAS CALLED IN LATE BY CUSTOMER, PUMP TRUCK AND SUPERVISOR ARRIVED ON LOCATION BEFORE BULK EQUIPMENT TO PROCEED WITH RIG UP,
02/26/2014 18:35		Assessment Of Location Safety Meeting					
02/26/2014 18:40		Pre-Rig Up Safety Meeting					RIG-UP JSA
02/26/2014 18:45		Rig-Up Equipment					
02/26/2014 19:15		Rig-Up Completed					
02/26/2014 20:00		Pre-Job Safety Meeting					WITH CUSTOMER REP AND RIG CREW
02/26/2014 20:35		Start Job					
02/26/2014 20:40		Test Lines					FRESH WATER WITH NO ADDITIVES
02/26/2014 20:43		Pump Spacer 1	2	10		90.0	FRESH WATER WITH NO ADDITIVES
02/26/2014 20:49		Pump Spacer 2	5	12		90.0	FRESH WATER WITH MUD FLUSH
02/26/2014 20:52		Pump Spacer 1	5	10		90.0	FRESH WATER WITH NO ADDITIVES
02/26/2014 20:54		Pump Cement	4	110		90.0	400 SKS SWIFTCEM B1 @ 14.2 PPG 1.55 YIELD, 7.68 GAL/SK
02/26/2014 21:19		Shutdown					
02/26/2014 21:21		Drop Top Plug					PRE-LOADED HWE TOP PLUG IN PLUG CONTAINER VERIFIED BY CUSTOMER REP
02/26/2014 21:22		Pump Displacement	5	79		380.0	FRESH WATER WITH NO ADDITIVES
02/26/2014 21:33		Spacer Returns to Surface					@ 30 BBLS DISPLACEMENT, 32 BBLS TO THE PIT
02/26/2014 21:41		Cement Returns to Surface					@62 BBLS DISPLACEMENT, 79 BBLS TO THE PIT
02/26/2014 21:50		Bump Plug				1238.0	FINAL CIRCULATING PRESSURE 380, 336 PSI TO LAND, 462 PSI TO LIFT,
02/26/2014 21:52		Check Floats					FLOATS HELD, BBLS BACK
02/26/2014 21:53		End Job					RIG DOWN JSA, JOURNEY MANAGMENT MEETING, THANKS AARON SMITH AND CREW

The Road to Excellence Starts with Safety

Sold To #: 300466		Ship To #: 3274565		Quote #:		Sales Order #: 901150692	
Customer: ANADARKO PETROLEUM CORP - EBUS				Customer Rep: 42, Majors			
Well Name: Elliott			Well #: 31N-18HZ		API/UWI #: 05-123-38625		
Field: WATTEBERG		City (SAP): PLATTEVILLE		County/Parish: Weld		State: Colorado	
Contractor: Majors			Rig/Platform Name/Num: Majors 42				
Job Purpose: Cement Surface Casing							
Well Type: Development Well				Job Type: Cement Surface Casing			
Sales Person: FLING, MATTHEW			Srvc Supervisor: SMITH, AARON			MBU ID Emp #: 518187	

Job Personnel

HES Emp Name	Exp Hrs	Emp #	HES Emp Name	Exp Hrs	Emp #	HES Emp Name	Exp Hrs	Emp #
DEY, JERRY A	6.0	505015	DODSON, RICHARD Bryan	6.0	518192	SMITH, AARON David	6.0	518187

Equipment

HES Unit #	Distance-1 way	HES Unit #	Distance-1 way	HES Unit #	Distance-1 way	HES Unit #	Distance-1 way
11398490	20 mile	12010173	20 mile				

Job

Job Times

Formation Name	Formation Depth (MD) Top	Bottom	Called Out	Date	Time	Time Zone
				26 - Feb - 2014	16:30	MST
Form Type		BHST	On Location	26 - Feb - 2014	18:30	MST
Job depth MD	1067. ft	Job Depth TVD	1067. ft	Job Started	26 - Feb - 2014	20:35
Water Depth		Wk Ht Above Floor	5. ft	Job Completed	26 - Feb - 2014	21:53
Perforation Depth (MD) From		To		Departed Loc	26 - Feb - 2014	22:30

Well Data

Description	New / Used	Max pressure psig	Size in	ID in	Weight lbm/ft	Thread	Grade	Top MD ft	Bottom MD ft	Top TVD ft	Bottom TVD ft
OPEN HOLE				13.5				.	1062.		
SURFACE CASING	Unknown		9.625	8.921	36.		J-55	.	1061.		

Fluid Data									
Stage/Plug #: 1									
Fluid #	Stage Type	Fluid Name	Qty	Qty uom	Mixing Density lbm/gal	Yield ft ³ /sk	Mix Fluid Gal/sk	Rate bbl/min	Total Mix Fluid Gal/sk
1	Fresh Water Spacer		10.0	bbl	8.33			2.5	
1	Spacer		12.0	bbl	8.40			5.0	
1	Fresh Water Spacer		10.0	bbl	8.33			5.0	
2	SwiftCem B2	SWIFTCEM (TM) SYSTEM (452990)	400.0	sacks	14.2	1.54	7.66	4.5	7.66
7.66 Gal		FRESH WATER							
Calculated Values			Pressures			Volumes			
Displacement		Shut In: Instant		Lost Returns		Cement Slurry		Pad	
Top Of Cement		5 Min		Cement Returns		Actual Displacement		Treatment	
Frac Gradient		15 Min		Spacers		Load and Breakdown		Total Job	
Rates									
Circulating		Mixing		Displacement		Avg. Job			
Cement Left In Pipe		Amount	0 ft	Reason	Shoe Joint				
Frac Ring # 1 @	ID	Frac ring # 2 @	ID	Frac Ring # 3 @	ID	Frac Ring # 4 @	ID		
The Information Stated Herein Is Correct				Customer Representative Signature					

