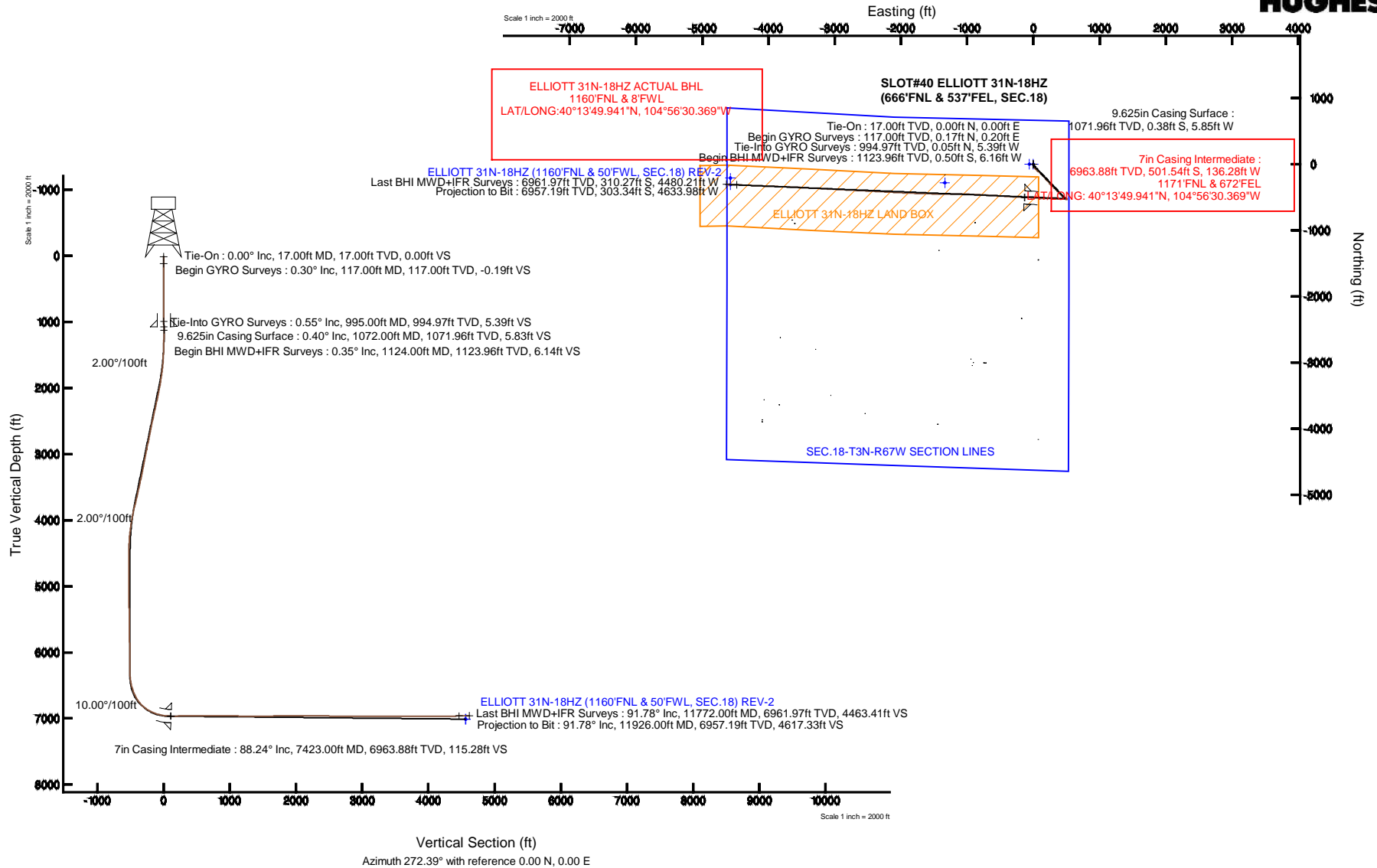


# KERR-MCGEE OIL & GAS ONSHORE LP

Location: COLORADO Slot: SLOT#40 ELLIOTT 31N-18HZ (666'FNL & 537'FEL, SEC.18)  
 Field: WELD COUNTY (KERR MCGEE) Well: ELLIOTT 31N-18HZ  
 Facility: SEC.18-T3N-R67W Wellbore: ELLIOTT 31N-18HZ PWB

Plot reference wellpath is ELLIOTT 31N-18HZ (REV-A.0) PWB

True vertical depths are referenced to XTREME 8 (17KB) (RKB)	Grid System: NAD83 / Lambert Colorado SP, Northern Zone (501), US feet
Measured depths are referenced to XTREME 8 (17KB) (RKB)	North Reference: True north
XTREME 8 (17KB) (RKB) to Mean Sea Level: 4853 feet	Scale: True distance
Mean Sea Level to Mud line (At Slot: SLOT#40 ELLIOTT 31N-18HZ (666'FNL & 537'FEL, SEC.18)) 0 feet	Depths are in feet
Coordinates are in feet referenced to Slot	Created by: precain on 22/May/2014



REFERENCE WELLPATH IDENTIFICATION			
Operator	KERR-MCGEE OIL & GAS ONSHORE LP	Slot	SLOT#40 ELLIOTT 31N-18HZ (666'FNL & 537'FEL, SEC.18)
Area	COLORADO	Well	ELLIOTT 31N-18HZ
Field	WELD COUNTY (KERR MCGEE)	Wellbore	ELLIOTT 31N-18HZ AWP
Facility	SEC.18-T3N-R67W		

REPORT SETUP INFORMATION			
Projection System	NAD83 / Lambert Colorado SP, Northern Zone (501), US feet	Software System	WellArchitect® 4.0.0
North Reference	True	User	Precain
Scale	0.999957	Report Generated	22/May/2014 at 13:11
Convergence at slot	n/a	Database/Source file	WellArchitectDB/ELLIOTT_31N-18HZ_AWP.xml

WELLPATH LOCATION						
	Local coordinates		Grid coordinates		Geographic coordinates	
	North[ft]	East[ft]	Easting[US ft]	Northing[US ft]	Latitude	Longitude
Slot Location	1203.46	2715.92	3160492.34	1327651.36	40°13'52.943"N	104°55'30.623"W
Facility Reference Pt			3157784.27	1326430.67	40°13'41.052"N	104°56'05.640"W
Field Reference Pt			3197771.84	1268891.29	40°04'09.600"N	104°47'36.000"W

WELLPATH DATUM			
Calculation method	Minimum curvature	XTREME 8 (17'KB) (RKB) to Installation Vertical Datum	4853.00ft
Horizontal Reference Pt	Slot	XTREME 8 (17'KB) (RKB) to Mean Sea Level	4853.00ft
Vertical Reference Pt	XTREME 8 (17'KB) (RKB)	XTREME 8 (17'KB) (RKB) to Mud Line at Slot (SLOT#40 ELLIOTT 31N-18HZ (666'FNL & 537'FEL, SEC.18))	4853.00ft
MD Reference Pt	XTREME 8 (17'KB) (RKB)	Section Origin	N 0.00, E 0.00 ft
Field Vertical Reference	Mean Sea Level	Section Azimuth	272.39°

REFERENCE WELLPATH IDENTIFICATION			
Operator	KERR-MCGEE OIL & GAS ONSHORE LP	Slot	SLOT#40 ELLIOTT 31N-18HZ (666'FNL & 537'FEL, SEC.18)
Area	COLORADO	Well	ELLIOTT 31N-18HZ
Field	WELD COUNTY (KERR MCGEE)	Wellbore	ELLIOTT 31N-18HZ AWP
Facility	SEC.18-T3N-R67W		

WELLPATH DATA (136 stations) † = interpolated/extrapolated station										
MD [ft]	Inclination [°]	Azimuth [°]	TVD [ft]	Vert Sect [ft]	North [ft]	East [ft]	Latitude	Longitude	DLS [°/100ft]	Comments
0.00†	0.000	50.170	0.00	0.00	0.00	0.00	40°13'52.943"N	104°55'30.623"W	0.00	
17.00	0.000	50.170	17.00	0.00	0.00	0.00	40°13'52.943"N	104°55'30.623"W	0.00	Tie-On
117.00	0.300	50.170	117.00	-0.19	0.17	0.20	40°13'52.945"N	104°55'30.620"W	0.30	Begin GYRO Surveys
217.00	0.240	13.890	217.00	-0.43	0.54	0.45	40°13'52.948"N	104°55'30.617"W	0.18	
317.00	0.490	321.150	317.00	-0.19	1.08	0.23	40°13'52.954"N	104°55'30.620"W	0.39	
417.00	0.460	307.650	416.99	0.42	1.65	-0.35	40°13'52.959"N	104°55'30.628"W	0.12	
517.00	0.550	273.270	516.99	1.23	1.93	-1.15	40°13'52.962"N	104°55'30.638"W	0.31	
617.00	0.510	250.110	616.99	2.12	1.80	-2.05	40°13'52.961"N	104°55'30.649"W	0.22	
717.00	0.530	255.890	716.98	2.97	1.54	-2.91	40°13'52.958"N	104°55'30.661"W	0.06	
817.00	0.590	242.240	816.98	3.86	1.19	-3.82	40°13'52.955"N	104°55'30.672"W	0.15	
917.00	0.690	235.720	916.97	4.79	0.61	-4.77	40°13'52.949"N	104°55'30.685"W	0.12	
995.00	0.550	218.110	994.97	5.39	0.05	-5.39	40°13'52.943"N	104°55'30.692"W	0.30	Tie-Into GYRO Surveys
1124.00	0.350	261.300	1123.96	6.14	-0.50	-6.16	40°13'52.938"N	104°55'30.702"W	0.29	Begin BHI MWD+IFR Surveys
1216.00	1.410	167.870	1215.95	6.13	-1.65	-6.20	40°13'52.927"N	104°55'30.703"W	1.60	
1307.00	3.070	161.210	1306.88	4.97	-5.05	-5.18	40°13'52.893"N	104°55'30.690"W	1.84	
1398.00	4.720	154.650	1397.67	2.34	-10.74	-2.79	40°13'52.837"N	104°55'30.659"W	1.88	
1489.00	6.590	159.820	1488.22	-1.40	-19.03	0.61	40°13'52.755"N	104°55'30.615"W	2.13	
1581.00	8.350	156.440	1579.44	-6.35	-30.11	5.10	40°13'52.645"N	104°55'30.557"W	1.97	
1692.00	9.730	147.240	1689.06	-15.28	-45.38	13.40	40°13'52.495"N	104°55'30.450"W	1.80	
1784.00	10.690	135.140	1779.61	-26.02	-57.97	23.63	40°13'52.370"N	104°55'30.318"W	2.55	
1875.00	11.680	134.710	1868.88	-39.03	-70.43	36.13	40°13'52.247"N	104°55'30.157"W	1.09	
1966.00	13.090	135.970	1957.76	-53.30	-84.32	49.84	40°13'52.110"N	104°55'29.980"W	1.58	
2058.00	14.540	133.340	2047.10	-69.57	-99.74	65.48	40°13'51.957"N	104°55'29.779"W	1.72	
2149.00	15.410	131.940	2135.01	-87.52	-115.66	82.78	40°13'51.800"N	104°55'29.556"W	1.04	
2241.00	16.440	132.380	2223.48	-106.92	-132.61	101.49	40°13'51.633"N	104°55'29.314"W	1.13	
2333.00	16.080	134.200	2311.80	-126.39	-150.27	120.24	40°13'51.458"N	104°55'29.073"W	0.68	
2424.00	17.100	135.750	2399.01	-145.51	-168.64	138.61	40°13'51.277"N	104°55'28.836"W	1.22	
2515.00	16.840	138.550	2486.05	-164.37	-188.10	156.67	40°13'51.084"N	104°55'28.603"W	0.94	
2606.00	16.730	137.410	2573.17	-182.76	-207.62	174.26	40°13'50.891"N	104°55'28.376"W	0.38	
2697.00	16.100	138.320	2660.46	-200.79	-226.69	191.52	40°13'50.703"N	104°55'28.154"W	0.75	
2789.00	16.000	140.380	2748.88	-218.15	-245.98	208.09	40°13'50.512"N	104°55'27.940"W	0.63	
2881.00	15.990	138.460	2837.32	-235.42	-265.23	224.57	40°13'50.322"N	104°55'27.728"W	0.58	
2972.00	16.160	139.370	2924.76	-252.76	-284.23	241.13	40°13'50.134"N	104°55'27.514"W	0.33	
3062.00	14.830	134.370	3011.49	-269.86	-301.79	257.52	40°13'49.961"N	104°55'27.303"W	2.09	
3154.00	14.630	134.590	3100.47	-287.22	-318.18	274.21	40°13'49.799"N	104°55'27.088"W	0.23	
3245.00	14.630	132.530	3188.52	-304.52	-334.01	290.87	40°13'49.642"N	104°55'26.873"W	0.57	
3337.00	14.050	132.640	3277.65	-321.92	-349.43	307.64	40°13'49.490"N	104°55'26.657"W	0.63	
3422.00	15.480	133.910	3359.84	-338.29	-364.29	323.41	40°13'49.343"N	104°55'26.453"W	1.72	
3507.00	16.970	134.660	3441.45	-355.96	-380.88	340.40	40°13'49.179"N	104°55'26.234"W	1.77	
3593.00	16.380	135.470	3523.84	-374.11	-398.34	357.83	40°13'49.007"N	104°55'26.009"W	0.74	
3678.00	17.560	139.890	3605.14	-391.52	-416.70	374.50	40°13'48.825"N	104°55'25.795"W	2.06	
3763.00	19.120	136.190	3685.82	-410.23	-436.55	392.40	40°13'48.629"N	104°55'25.564"W	2.29	
3848.00	19.330	136.200	3766.08	-430.43	-456.75	411.77	40°13'48.429"N	104°55'25.314"W	0.25	
3934.00	17.510	136.860	3847.67	-449.94	-476.46	430.47	40°13'48.235"N	104°55'25.073"W	2.13	
4019.00	14.840	130.460	3929.30	-467.64	-492.86	447.50	40°13'48.073"N	104°55'24.853"W	3.77	

REFERENCE WELLPATH IDENTIFICATION			
Operator	KERR-MCGEE OIL & GAS ONSHORE LP	Slot	SLOT#40 ELLIOTT 31N-18HZ (666'FNL & 537'FEL, SEC.18)
Area	COLORADO	Well	ELLIOTT 31N-18HZ
Field	WELD COUNTY (KERR MCGEE)	Wellbore	ELLIOTT 31N-18HZ AWB
Facility	SEC.18-T3N-R67W		

### WELLPATH DATA (136 stations) † = interpolated/extrapolated station

MD [ft]	Inclination [°]	Azimuth [°]	TVD [ft]	Vert Sect [ft]	North [ft]	East [ft]	Latitude	Longitude	DLS [°/100ft]	Comments
4104.00	12.120	129.670	4011.95	-483.31	-505.62	462.66	40°13'47.946"N	104°55'24.658"W	3.21	
4194.00	9.550	129.310	4100.34	-496.79	-516.39	475.71	40°13'47.840"N	104°55'24.490"W	2.86	
4283.00	7.490	131.490	4188.36	-507.20	-524.91	485.77	40°13'47.756"N	104°55'24.360"W	2.34	
4373.00	5.610	129.520	4277.77	-515.26	-531.60	493.56	40°13'47.690"N	104°55'24.260"W	2.10	
4462.00	2.220	105.900	4366.55	-520.41	-534.84	498.57	40°13'47.658"N	104°55'24.195"W	4.14	
4552.00	1.170	57.520	4456.51	-522.85	-534.82	501.02	40°13'47.658"N	104°55'24.163"W	1.87	
4637.00	1.250	23.090	4541.49	-523.89	-533.50	502.12	40°13'47.671"N	104°55'24.149"W	0.85	
4727.00	1.080	23.660	4631.48	-524.55	-531.82	502.84	40°13'47.688"N	104°55'24.140"W	0.19	
4817.00	1.150	17.180	4721.46	-525.09	-530.18	503.45	40°13'47.704"N	104°55'24.132"W	0.16	
4996.00	0.640	10.160	4900.44	-525.68	-527.48	504.16	40°13'47.730"N	104°55'24.123"W	0.29	
5085.00	1.280	314.030	4989.43	-525.01	-526.30	503.53	40°13'47.742"N	104°55'24.131"W	1.20	
5175.00	1.050	315.680	5079.41	-523.65	-525.01	502.23	40°13'47.755"N	104°55'24.148"W	0.26	
5262.00	1.180	326.420	5166.39	-522.55	-523.70	501.18	40°13'47.768"N	104°55'24.161"W	0.28	
5347.00	1.500	307.450	5251.37	-521.12	-522.29	499.81	40°13'47.782"N	104°55'24.179"W	0.64	
5520.00	0.800	301.970	5424.33	-518.22	-520.27	496.99	40°13'47.802"N	104°55'24.215"W	0.41	
5787.00	0.960	250.300	5691.30	-514.53	-520.04	493.30	40°13'47.804"N	104°55'24.263"W	0.29	
5958.00	0.870	257.080	5862.28	-511.95	-520.81	490.69	40°13'47.796"N	104°55'24.297"W	0.08	
6214.00	0.850	272.680	6118.25	-508.17	-521.16	486.90	40°13'47.793"N	104°55'24.345"W	0.09	
6366.00	0.480	250.290	6270.24	-506.46	-521.32	485.17	40°13'47.791"N	104°55'24.368"W	0.29	
6426.00	0.840	260.480	6330.24	-505.79	-521.48	484.50	40°13'47.790"N	104°55'24.376"W	0.63	
6469.00	3.270	266.760	6373.21	-504.26	-521.60	482.97	40°13'47.789"N	104°55'24.396"W	5.67	
6512.00	7.720	270.900	6416.00	-500.15	-521.63	478.85	40°13'47.788"N	104°55'24.449"W	10.38	
6554.00	11.510	267.970	6457.40	-493.15	-521.73	471.84	40°13'47.787"N	104°55'24.540"W	9.10	
6597.00	14.560	267.830	6499.29	-483.49	-522.09	462.15	40°13'47.784"N	104°55'24.664"W	7.09	
6640.00	16.890	266.720	6540.68	-471.88	-522.65	450.51	40°13'47.778"N	104°55'24.815"W	5.46	
6682.00	18.910	266.490	6580.64	-459.04	-523.41	437.63	40°13'47.771"N	104°55'24.981"W	4.81	
6725.00	22.760	268.550	6620.82	-443.80	-524.05	422.35	40°13'47.764"N	104°55'25.178"W	9.11	
6768.00	26.770	269.050	6659.86	-425.83	-524.42	404.35	40°13'47.761"N	104°55'25.410"W	9.34	
6810.00	30.770	270.550	6696.67	-405.64	-524.48	384.14	40°13'47.760"N	104°55'25.670"W	9.68	
6853.00	35.310	271.960	6732.71	-382.21	-523.95	360.71	40°13'47.765"N	104°55'25.972"W	10.71	
6895.00	40.040	271.960	6765.94	-356.54	-523.07	335.06	40°13'47.774"N	104°55'26.303"W	11.26	
6938.00	45.010	272.050	6797.62	-327.49	-522.05	306.02	40°13'47.784"N	104°55'26.677"W	11.56	
6981.00	49.880	273.410	6826.69	-295.83	-520.53	274.39	40°13'47.799"N	104°55'27.085"W	11.56	
7023.00	54.700	273.790	6852.38	-262.62	-518.44	241.24	40°13'47.820"N	104°55'27.513"W	11.50	
7066.00	59.610	272.500	6875.69	-226.51	-516.47	205.18	40°13'47.839"N	104°55'27.978"W	11.69	
7109.00	64.020	271.110	6896.00	-188.62	-515.28	167.31	40°13'47.851"N	104°55'28.466"W	10.64	
7151.00	68.610	270.520	6912.86	-150.18	-514.74	128.86	40°13'47.856"N	104°55'28.962"W	11.00	
7194.00	71.200	271.160	6927.64	-109.82	-514.15	88.49	40°13'47.862"N	104°55'29.482"W	6.18	
7237.00	74.470	273.870	6940.33	-68.74	-512.34	47.45	40°13'47.880"N	104°55'30.011"W	9.70	
7279.00	79.070	273.450	6949.94	-27.88	-509.73	6.66	40°13'47.906"N	104°55'30.537"W	11.00	
7322.00	83.110	273.540	6956.60	14.59	-507.14	-35.73	40°13'47.931"N	104°55'31.084"W	9.40	
7365.00	85.670	273.170	6960.80	57.37	-504.63	-78.45	40°13'47.956"N	104°55'31.634"W	6.01	
7413.00†	87.799	272.995	6963.53	105.29	-502.06	-126.30	40°13'47.982"N	104°55'32.251"W	4.45	7" Casing Point
7505.00	91.880	272.660	6963.79	197.26	-497.52	-218.17	40°13'48.027"N	104°55'33.436"W	4.45	
7591.00	90.920	273.250	6961.69	283.23	-493.09	-304.02	40°13'48.070"N	104°55'34.543"W	1.31	

REFERENCE WELLPATH IDENTIFICATION				
Operator	KERR-MCGEE OIL & GAS ONSHORE LP		Slot	SLOT#40 ELLIOTT 31N-18HZ (666'FNL & 537'FEL, SEC.18)
Area	COLORADO		Well	ELLIOTT 31N-18HZ
Field	WELD COUNTY (KERR MCGEE)		Wellbore	ELLIOTT 31N-18HZ AWP
Facility	SEC.18-T3N-R67W			

WELLPATH DATA (136 stations)										
MD [ft]	Inclination [°]	Azimuth [°]	TVD [ft]	Vert Sect [ft]	North [ft]	East [ft]	Latitude	Longitude	DLS [°/100ft]	Comments
7676.00	89.870	273.670	6961.10	368.21	-487.96	-388.87	40°13'48.121"N	104°55'35.637"W	1.33	
7761.00	90.670	273.490	6960.70	453.19	-482.65	-473.70	40°13'48.173"N	104°55'36.730"W	0.96	
7846.00	90.550	274.450	6959.80	538.16	-476.77	-558.49	40°13'48.232"N	104°55'37.824"W	1.14	
7932.00	89.960	273.170	6959.42	624.13	-471.05	-644.30	40°13'48.288"N	104°55'38.930"W	1.64	
8017.00	90.060	273.060	6959.40	709.12	-466.43	-729.17	40°13'48.334"N	104°55'40.024"W	0.17	
8187.00	90.120	272.900	6959.13	879.11	-457.60	-898.94	40°13'48.421"N	104°55'42.213"W	0.10	
8272.00	89.840	272.720	6959.16	964.11	-453.43	-983.84	40°13'48.462"N	104°55'43.308"W	0.39	
8358.00	88.110	270.770	6960.70	1050.08	-450.81	-1069.78	40°13'48.488"N	104°55'44.416"W	3.03	
8443.00	88.420	270.430	6963.28	1135.00	-449.92	-1154.73	40°13'48.497"N	104°55'45.511"W	0.54	
8528.00	88.890	270.490	6965.27	1219.93	-449.24	-1239.71	40°13'48.503"N	104°55'46.607"W	0.56	
8698.00	90.370	270.150	6966.37	1389.81	-448.29	-1409.70	40°13'48.513"N	104°55'48.798"W	0.89	
8869.00	90.800	270.690	6964.62	1560.70	-447.04	-1580.68	40°13'48.525"N	104°55'51.003"W	0.40	
8954.00	90.980	271.980	6963.30	1645.67	-445.06	-1665.65	40°13'48.544"N	104°55'52.098"W	1.53	
9039.00	90.580	272.160	6962.14	1730.66	-441.99	-1750.58	40°13'48.575"N	104°55'53.193"W	0.52	
9124.00	90.150	272.560	6961.60	1815.66	-438.49	-1835.51	40°13'48.609"N	104°55'54.288"W	0.69	
9210.00	90.300	272.030	6961.27	1901.66	-435.04	-1921.44	40°13'48.643"N	104°55'55.396"W	0.64	
9295.00	90.890	272.790	6960.38	1986.66	-431.47	-2006.36	40°13'48.678"N	104°55'56.491"W	1.13	
9380.00	90.360	273.230	6959.46	2071.64	-427.00	-2091.23	40°13'48.722"N	104°55'57.585"W	0.81	
9465.00	89.220	273.430	6959.77	2156.63	-422.07	-2176.09	40°13'48.771"N	104°55'58.679"W	1.36	
9550.00	88.450	273.320	6961.50	2241.60	-417.06	-2260.92	40°13'48.821"N	104°55'59.773"W	0.92	
9635.00	90.000	272.910	6962.65	2326.58	-412.45	-2345.79	40°13'48.866"N	104°56'00.867"W	1.89	
9721.00	90.000	272.560	6962.65	2412.58	-408.34	-2431.69	40°13'48.907"N	104°56'01.975"W	0.41	
9806.00	89.380	272.850	6963.10	2497.58	-404.33	-2516.59	40°13'48.946"N	104°56'03.070"W	0.81	
9891.00	90.210	272.870	6963.41	2582.57	-400.09	-2601.49	40°13'48.988"N	104°56'04.164"W	0.98	
9977.00	89.690	273.060	6963.48	2668.57	-395.64	-2687.37	40°13'49.032"N	104°56'05.271"W	0.64	
10062.00	88.790	273.150	6964.61	2753.55	-391.04	-2772.24	40°13'49.077"N	104°56'06.366"W	1.06	
10148.00	89.040	272.750	6966.24	2839.53	-386.61	-2858.11	40°13'49.121"N	104°56'07.473"W	0.55	
10233.00	90.150	272.840	6966.84	2924.53	-382.47	-2943.00	40°13'49.162"N	104°56'08.567"W	1.31	
10318.00	90.370	273.200	6966.46	3009.52	-377.99	-3027.88	40°13'49.206"N	104°56'09.662"W	0.50	
10403.00	90.030	273.350	6966.16	3094.51	-373.13	-3112.74	40°13'49.254"N	104°56'10.756"W	0.44	
10489.00	89.690	273.050	6966.37	3180.50	-368.33	-3198.61	40°13'49.301"N	104°56'11.863"W	0.53	
10574.00	90.330	272.830	6966.35	3265.50	-363.97	-3283.50	40°13'49.344"N	104°56'12.957"W	0.80	
10659.00	90.430	272.880	6965.79	3350.49	-359.74	-3368.39	40°13'49.386"N	104°56'14.052"W	0.13	
10744.00	90.430	273.330	6965.15	3435.48	-355.14	-3453.26	40°13'49.431"N	104°56'15.146"W	0.53	
10830.00	89.380	273.100	6965.29	3521.47	-350.31	-3539.13	40°13'49.479"N	104°56'16.253"W	1.25	
10915.00	89.500	272.760	6966.13	3606.47	-345.97	-3624.01	40°13'49.522"N	104°56'17.348"W	0.42	
11000.00	90.030	272.530	6966.47	3691.46	-342.05	-3708.92	40°13'49.560"N	104°56'18.442"W	0.68	
11085.00	90.520	272.300	6966.07	3776.46	-338.46	-3793.84	40°13'49.595"N	104°56'19.537"W	0.64	
11170.00	89.870	272.240	6965.78	3861.46	-335.10	-3878.77	40°13'49.629"N	104°56'20.632"W	0.77	
11256.00	90.090	271.770	6965.81	3947.46	-332.09	-3964.72	40°13'49.658"N	104°56'21.740"W	0.60	
11341.00	90.400	271.400	6965.44	4032.45	-329.74	-4049.69	40°13'49.681"N	104°56'22.836"W	0.57	
11512.00	90.000	272.920	6964.85	4203.44	-323.29	-4220.56	40°13'49.745"N	104°56'25.039"W	0.92	
11597.00	90.490	272.900	6964.48	4288.44	-318.98	-4305.45	40°13'49.787"N	104°56'26.134"W	0.58	
11682.00	90.490	272.970	6963.76	4373.43	-314.63	-4390.33	40°13'49.830"N	104°56'27.228"W	0.08	
11772.00	91.780	272.580	6961.97	4463.41	-310.27	-4480.21	40°13'49.873"N	104°56'28.387"W	1.50	Last BHI MWD+IFR Surveys

REFERENCE WELLPATH IDENTIFICATION			
Operator	KERR-MCGEE OIL & GAS ONSHORE LP	Slot	SLOT#40 ELLIOTT 31N-18HZ (666'FNL & 537'FEL, SEC.18)
Area	COLORADO	Well	ELLIOTT 31N-18HZ
Field	WELD COUNTY (KERR MCGEE)	Wellbore	ELLIOTT 31N-18HZ AWB
Facility	SEC.18-T3N-R67W		

WELLPATH DATA (136 stations)										
MD [ft]	Inclination [°]	Azimuth [°]	TVD [ft]	Vert Sect [ft]	North [ft]	East [ft]	Latitude	Longitude	DLS [°/100ft]	Comments
11926.00	91.780	272.580	6957.19	4617.33	-303.34	-4633.98	40°13'49.941"N	104°56'30.369"W	0.00	Projection to Bit

HOLE & CASING SECTIONS - Ref Wellbore: ELLIOTT 31N-18HZ AWB Ref Wellpath: ELLIOTT 31N-18HZ AWP									
String/Diameter	Start MD [ft]	End MD [ft]	Interval [ft]	Start TVD [ft]	End TVD [ft]	Start N/S [ft]	Start E/W [ft]	End N/S [ft]	End E/W [ft]
13.5in Open Hole	17.00	1078.00	1061.00	17.00	1077.96	0.00	0.00	-0.40	-5.88
9.625in Casing Surface	17.00	1072.00	1055.00	17.00	1071.96	0.00	0.00	-0.38	-5.85
8.75in Open Hole	1078.00	7425.00	6347.00	1077.96	6963.94	-0.40	-5.88	-501.44	-138.27
7in Casing Intermediate	17.00	7423.00	7406.00	17.00	6963.88	0.00	0.00	-501.54	-136.28
6.125in Open Hole	7423.00	11926.00	4503.00	6963.88	6957.19	-501.54	-136.28	-303.34	-4633.98

TARGETS									
Name	MD [ft]	TVD [ft]	North [ft]	East [ft]	Grid East [US ft]	Grid North [US ft]	Latitude	Longitude	Shape
ELLIOTT 31N-18HZ LAND BOX		0.00	0.00	0.00	3160492.34	1327651.35	40°13'52.943"N	104°55'30.623"W	polygon
SEC.18-T3N-R67W SECTION LINES		0.00	1.11	-60.03	3160432.31	1327652.08	40°13'52.954"N	104°55'31.397"W	polygon
ELLIOTT 31N-18HZ (1160'FNL & 50'FWL, SEC.18) REV-2		7010.00	-308.71	-4575.53	3155919.12	1327313.01	40°13'49.888"N	104°56'29.616"W	point
ELLIOTT 31N-18HZ BHL ON PLAT (1060'FNL & 50'FWL, SEC.18) REV-1		7010.00	-208.71	-4575.53	3155918.47	1327413.00	40°13'50.876"N	104°56'29.616"W	point
ELLIOTT, KARL UNIT 1 (270'CIRCLE)		8166.00	-640.84	-878.99	3159617.56	1327004.86	40°13'46.610"N	104°55'41.956"W	circle
HSR-ELLIOTT FARMS (128'CIRCLE) (2)		8640.00	-281.00	-1338.00	3159156.25	1327361.70	40°13'50.166"N	104°55'47.874"W	circle

WELLPATH COMPOSITION - Ref Wellbore: ELLIOTT 31N-18HZ AWB Ref Wellpath: ELLIOTT 31N-18HZ AWP				
Start MD [ft]	End MD [ft]	Positional Uncertainty Model	Log Name/Comment	Wellbore
17.00	995.00	Generic gyro - continuous (Standard)	MS ENERGY GYRO SURVEYS <117-995>	ELLIOTT 31N-18HZ AWB
995.00	7365.00	NaviTrak (IFR)	BHI MWD+IFR SURVEYS 8 3/4" HOLE <1124-7365>	ELLIOTT 31N-18HZ AWB
7365.00	11772.00	NaviTrak (IFR)	BHI MWD+IFR SURVEYS 6 1/8" HOLE <7505-11772>	ELLIOTT 31N-18HZ AWB
11772.00	11926.00	Blind Drilling (std)	Projection to bit	ELLIOTT 31N-18HZ AWB

### REFERENCE WELLPATH IDENTIFICATION

Operator	KERR-MCGEE OIL & GAS ONSHORE LP	Slot	SLOT#40 ELLIOTT 31N-18HZ (666'FNL & 537'FEL, SEC.18)
Area	COLORADO	Well	ELLIOTT 31N-18HZ
Field	WELD COUNTY (KERR MCGEE)	Wellbore	ELLIOTT 31N-18HZ AWP
Facility	SEC.18-T3N-R67W		

### WELLPATH COMMENTS

MD [ft]	Inclination [°]	Azimuth [°]	TVD [ft]	Comment
17.00	0.000	50.170	17.00	Tie-On
117.00	0.300	50.170	117.00	Begin GYRO Surveys
995.00	0.550	218.110	994.97	Tie-Into GYRO Surveys
1124.00	0.350	261.300	1123.96	Begin BHI MWD+IFR Surveys
7413.00	87.799	272.995	6963.53	7" Casing Point
11772.00	91.780	272.580	6961.97	Last BHI MWD+IFR Surveys
11926.00	91.780	272.580	6957.19	Projection to Bit