

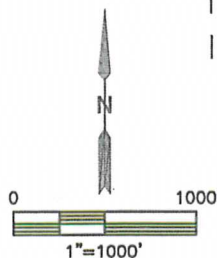
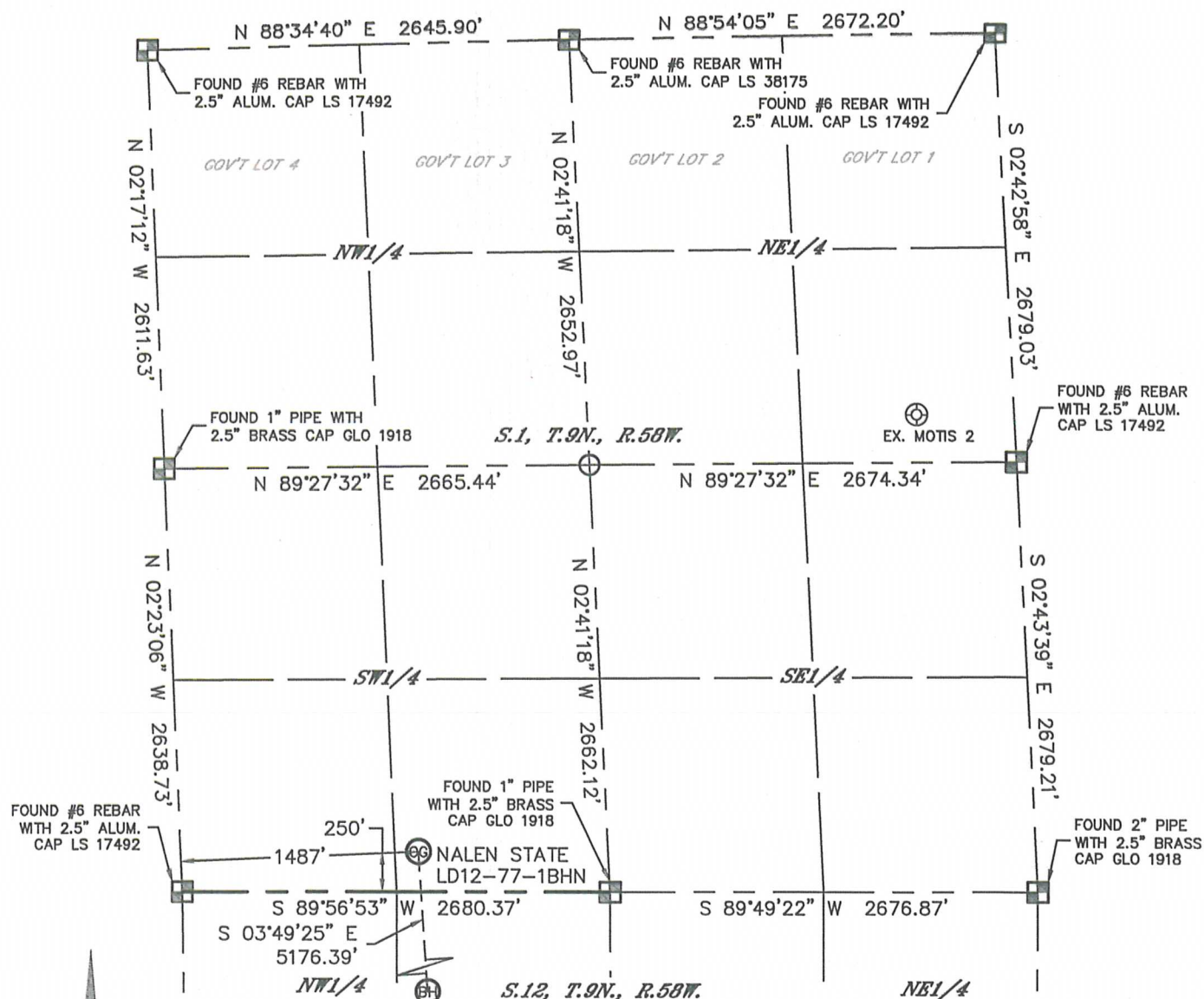


Lat40[®], Inc. 1635 Foxtrail Drive, Suite 325 Loveland, CO 970-776-3321

WELL LOCATION CERTIFICATE

THIS MAP DOES NOT REPRESENT A BOUNDARY SURVEY

SECTION: 1
TOWNSHIP: 9N
RANGE: 58W



In accordance with a request from Brian James with Noble Energy Inc., Lat40[®], Inc. has determined the surface location of the NALEN STATE LD12-77-1BHN to be 250' from the SOUTH line and 1487' from the WEST line as measured at right angles from the section lines of Section 1, Township 9 North, Range 58 West and the bottom hole to be 330' from the SOUTH line and 1760' from the WEST line as measured at right angles from the section lines of Section 12, Township 9 North, Range 58 West of the Sixth Principal Meridian, County of Weld, State of Colorado.

I hereby state that this Well Location Certificate was prepared by me, or under my direct supervision, that the fieldwork was completed on 9/4/2013, for and on behalf of Noble Energy Inc.. That this is not a Land Survey Plat or an Improvement Survey Plat, and that it is not to be relied upon for establishment of fence, building, or other future improvement lines.

NOTE:

- 1) Bearings shown are Grid Bearings of the Colorado State Plane Coordinate System, North Zone, North American Datum 1983/2007. The lineal dimensions as contained herein are based upon the "U.S. Survey Foot."
 - 2) Ground elevations are based on an observed GPS elevation (NAVD 1988 DATUM).
 - 3) IMPROVEMENTS: See LOCATION DRAWING for all visible improvements within 500' of disturbed area.
 - 4) SURFACE USE: RANGELAND
 - 5) INSTRUMENT OPERATOR: BRIAN ROTTINGHAUS
 - 6) NEAREST EXISTING WELL: MOTIS 2, 4153' NE
- NEAREST CULTURAL ITEMS:
BUILDING: 3745' SW
BUILDING UNIT: 5280'+
HIGH OCCUPANCY BUILDING UNIT: 5280'+
DESIGNATED OUTSIDE ACTIVITY AREA: 5280'+
PUBLIC ROAD: 5280'+
ABOVEGROUND UTILITY: 5280'+
RAILROAD: 5280'+
PROPERTY LINE: 250' S

SURFACE LOCATION

LAT: 40.77398N
LONG: 103.81627W
PDOP: 1.7
ELEV: 4647'
1/4,1/4: SE1/4SW1/4

BOTTOM HOLE

LAT: 40.75979N
LONG: 103.81538W

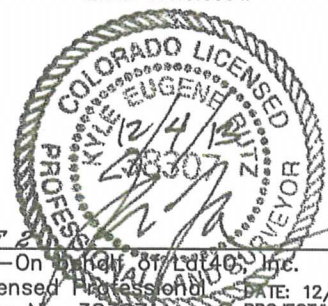
LEGEND

- = ALIQUOT MONUMENT AS DESCRIBED
○ = CALCULATED POSITION

SHEET 1 OF 2

Kyle E. Rutz-On behalf of Lat40[®], Inc.
Colorado Licensed Professional
Land Surveyor No. 38307

DATE: 12/16/2013
PROJECT#: 2013115



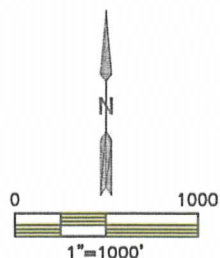
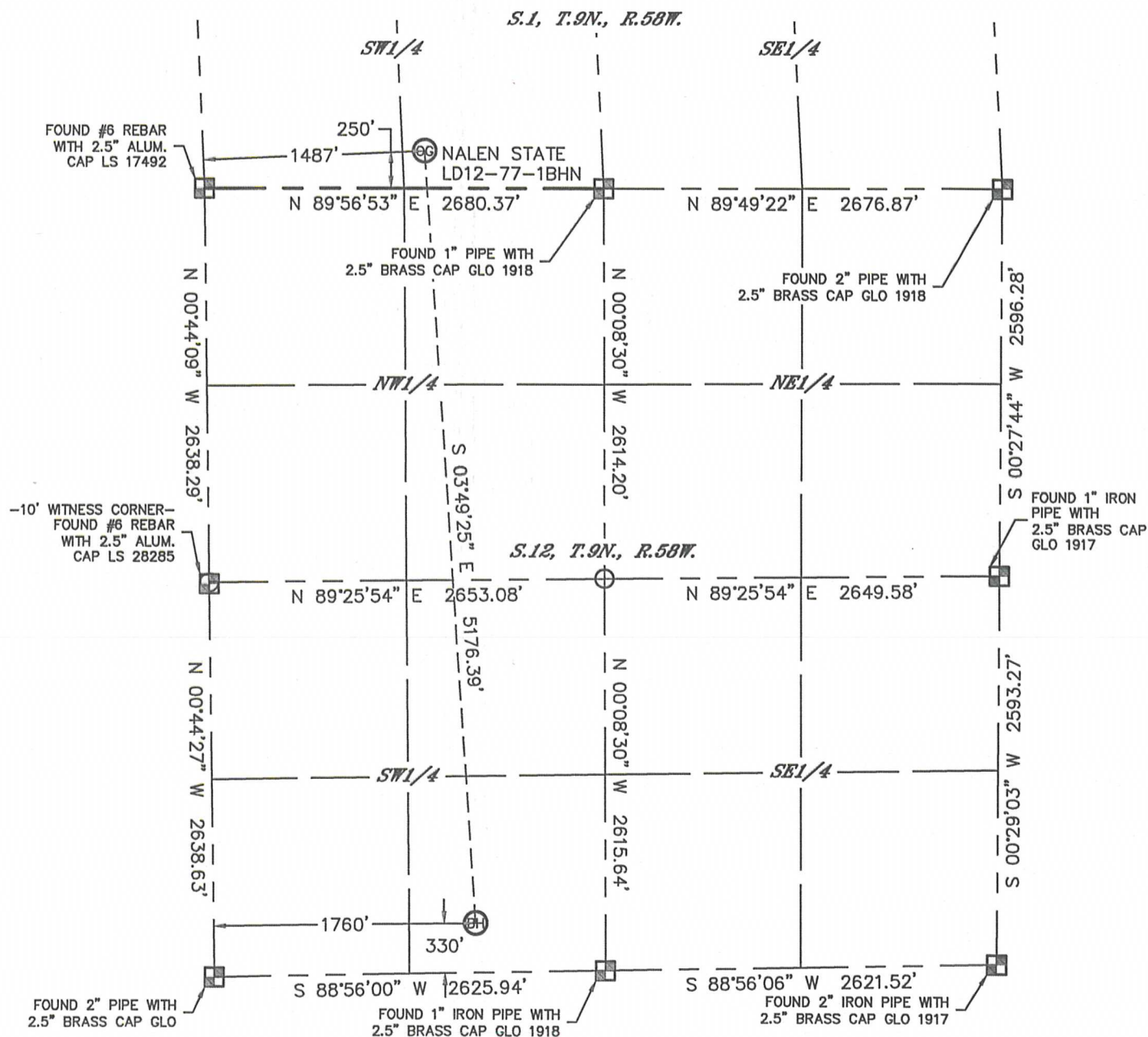


Lat40°, Inc. 1635 Foxtrail Drive, Suite 325 Loveland, CO 970-776-3321

WELL LOCATION CERTIFICATE

THIS MAP DOES NOT REPRESENT A BOUNDARY SURVEY

SECTION: 1
TOWNSHIP: 9N
RANGE: 58W



- LEGEND
- = ALIQUOT MONUMENT AS DESCRIBED
 - = CALCULATED POSITION



SHEET 2 OF 2

Kyle E. Rutz-On, Inc.
Colorado Licensed Professional Surveyor
Land Surveyor No. 38307
DATE: 9/26/2013
PROJECT#: 2013115

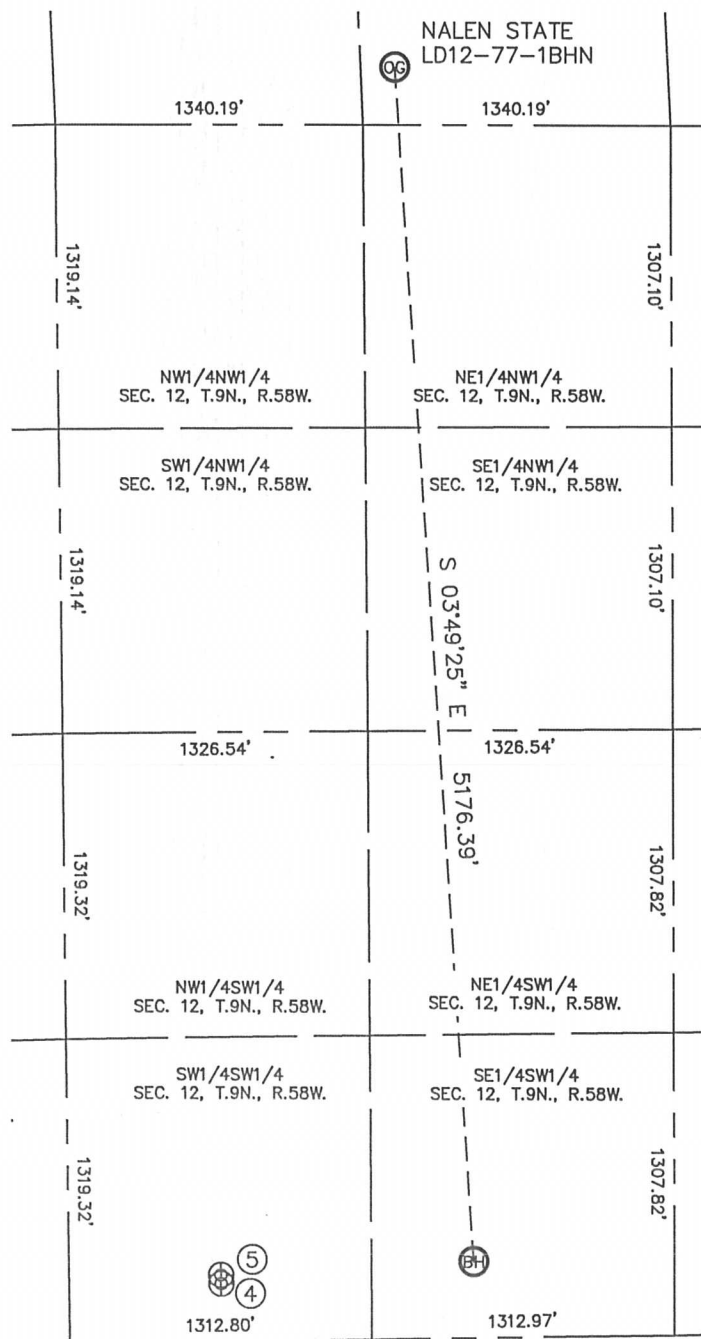


Lat40°, Inc. 1635 Foxtrail Drive, Suite 325 Loveland, CO 970-776-3321

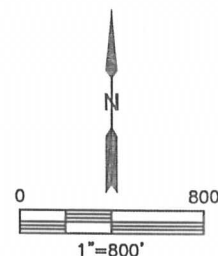
SITE SKETCH

NALEN STATE LD12-77-1BHN

SECTION: 1
TOWNSHIP: 9N
RANGE: 58W



WELL NO.	WELL NAME	SHL FOOTAGE				SHL LAT°	SHL LONG°	PDOP	ELEV (FT.)	1/4/1/4
4	CASTOR FEDERAL LD13-78HN	250	FSL	661	FWL	40.75957	-103.81935	2.5	4631	SWSW
5	CASTOR LD12-78HN	288	FSL	661	FWL	40.75968	-103.81934	2.5	4631	SWSW



DATE: 12/4/2013
PROJECT#: 2013115