

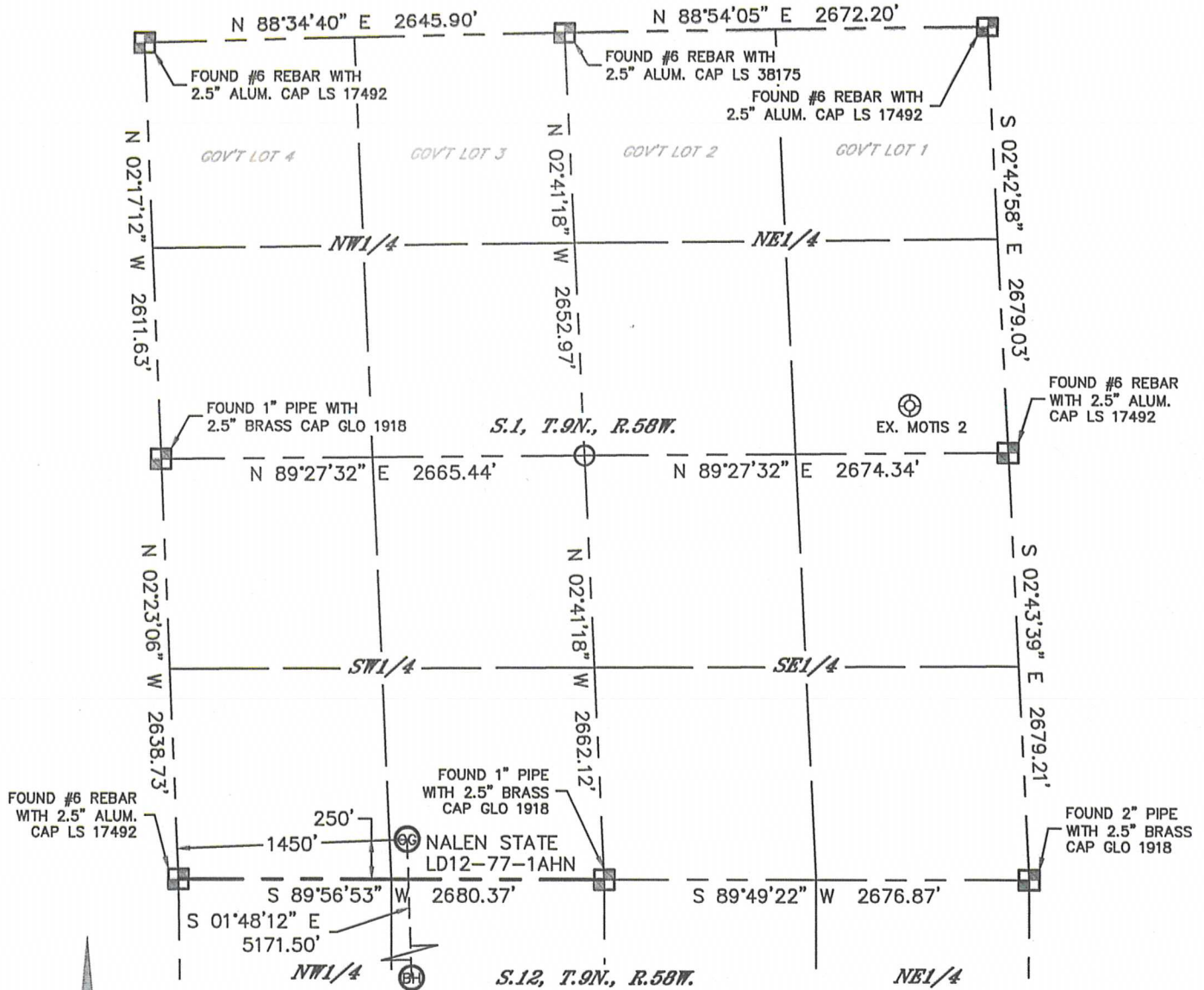


Lat40°, Inc. 1635 Foxtrail Drive, Suite 325 Loveland, CO 970-776-3321

WELL LOCATION CERTIFICATE

SECTION: 1
TOWNSHIP: 9N
RANGE: 58W

THIS MAP DOES NOT REPRESENT A BOUNDARY SURVEY



In accordance with a request from Brian James with Noble Energy Inc., Lat40°, Inc. has determined the surface location of the NALEN STATE LD12-77-1AHN to be 250' from the SOUTH line and 1450' from the WEST line as measured at right angles from the section lines of Section 1, Township 9 North, Range 58 West and the bottom hole to be 330' from the SOUTH line and 1540' from the WEST line as measured at right angles from the section lines of Section 12, Township 9 North, Range 58 West of the Sixth Principal Meridian, County of Weld, State of Colorado.

I hereby state that this Well Location Certificate was prepared by me, or under my direct supervision, that the fieldwork was completed on 9/4/2013, for and on behalf of Noble Energy Inc. That this is not a Land Survey Plat or an Improvement Survey Plat, and that it is not to be relied upon for establishment of fence, building, or other future improvement lines.

NOTE:

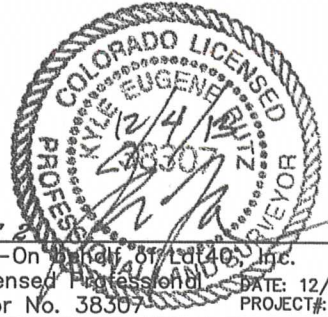
- 1) Bearings shown are Grid Bearings of the Colorado State Plane Coordinate System, North Zone, North American Datum 1983/2007. The lineal dimensions as contained herein are based upon the "U.S. Survey Foot."
- 2) Ground elevations are based on an observed GPS elevation (NAVD 1988 DATUM).
- 3) IMPROVEMENTS: See LOCATION DRAWING for all visible improvements within 500' of disturbed area.
- 4) SURFACE USE: RANGELAND
- 5) INSTRUMENT OPERATOR: BRIAN ROTTINGHAUS
- 6) NEAREST EXISTING WELL: MOTIS 2, 4181' NE
NEAREST CULTURAL ITEMS:
BUILDING: 3708' SW
BUILDING UNIT: 5280'+
HIGH OCCUPANCY BUILDING UNIT: 5280'+
DESIGNATED OUTSIDE ACTIVITY AREA: 5280'+
PUBLIC ROAD: 5280'+
ABOVEGROUND UTILITY: 5280'+
RAILROAD: 5280'+
PROPERTY LINE: 250' S

SURFACE LOCATION
LAT: 40.77398°N
LONG: 103.81640°W
PDOP: 1.7
ELEV: 4647'
1/4,1/4: SE1/4SW1/4

BOTTOM HOLE
LAT: 40.75979°N
LONG: 103.81617°W

LEGEND

- = ALIQUOT MONUMENT AS DESCRIBED
- = CALCULATED POSITION



SHEET 1 OF 2
Kyle E. Rutz—On behalf of Lat40°, Inc.
Colorado Licensed Professional Surveyor
DATE: 12/16/2013
Land Surveyor No. 38307 PROJECT#: 2013115



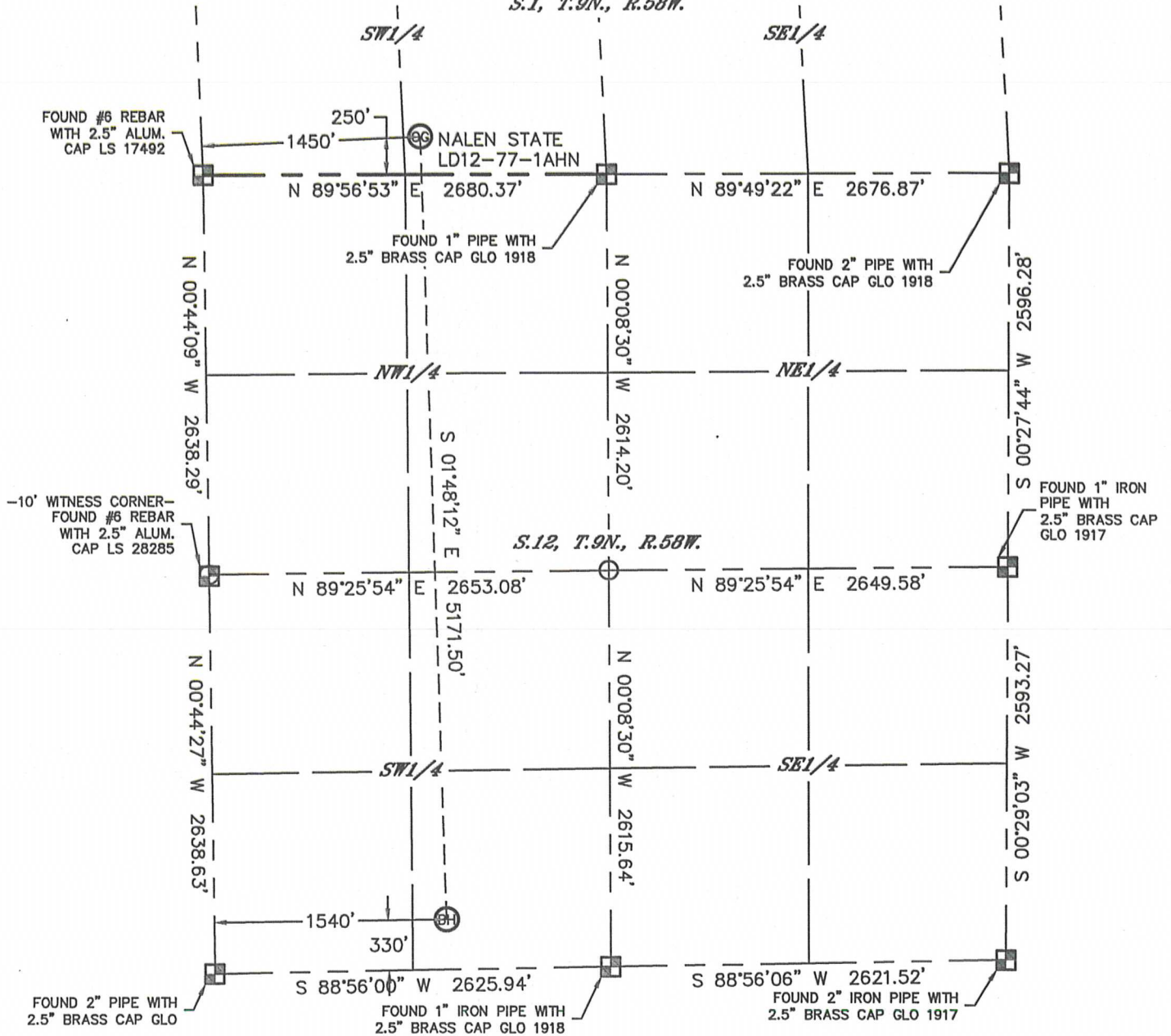
Lat40°, Inc. 1635 Foxtrail Drive, Suite 325 Loveland, CO 970-776-3321

WELL LOCATION CERTIFICATE

THIS MAP DOES NOT REPRESENT A BOUNDARY SURVEY

SECTION: 1
TOWNSHIP: 9N
RANGE: 58W

S.1, T.9N., R.58W.



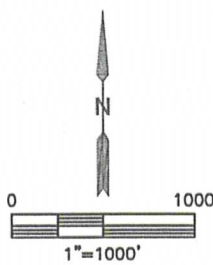
-10' WITNESS CORNER-
FOUND #6 REBAR
WITH 2.5\" ALUM.
CAP LS 28285

FOUND 1\" IRON
PIPE WITH
2.5\" BRASS CAP
GLO 1917

FOUND 2\" PIPE WITH
2.5\" BRASS CAP GLO

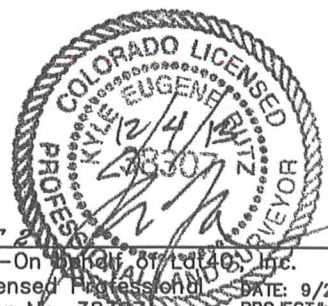
FOUND 1\" IRON PIPE WITH
2.5\" BRASS CAP GLO 1918

FOUND 2\" IRON PIPE WITH
2.5\" BRASS CAP GLO 1917



LEGEND

- = ALIQUOT MONUMENT AS DESCRIBED
- = CALCULATED POSITION



SHEET 2 OF 2
 Kyle E. Rutz-On Behalf of Lat40, Inc.
 Colorado Licensed Professional Land Surveyor No. 38307
 DATE: 9/26/2013
 PROJECT#: 2013115

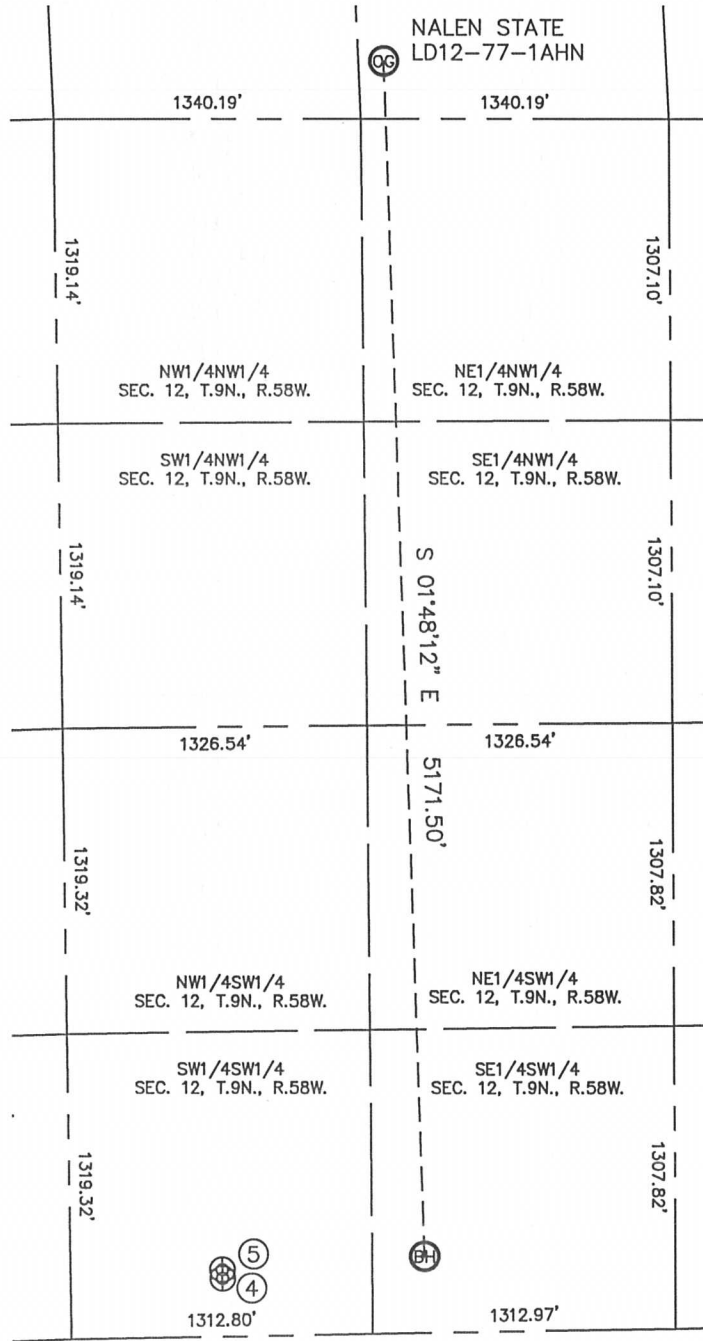


Lat40°, Inc. 1635 Foxtrail Drive, Suite 325 Loveland, CO 970-776-3321

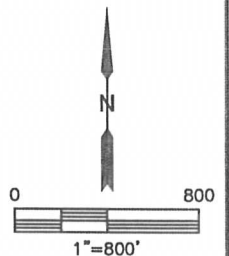
SITE SKETCH

NALEN STATE LD12-77-1AHN

SECTION: 1
TOWNSHIP: 9N
RANGE: 58W



WELL NO.	WELL NAME	SHL FOOTAGE			SHL LAT°	SHL LONG°	PDOP	ELEV (FT.)	1/4/1/4	
4	CASTOR FEDERAL LD13-78HN	250	FSL	661	FWL	40.75957	-103.81935	2.5	4631	SWSW
5	CASTOR LD12-78HN	288	FSL	661	FWL	40.75968	-103.81934	2.5	4631	SWSW



DATE: 12/4/2013
PROJECT#: 2013115