



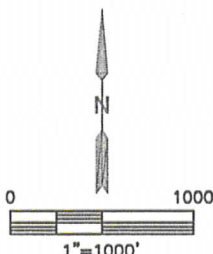
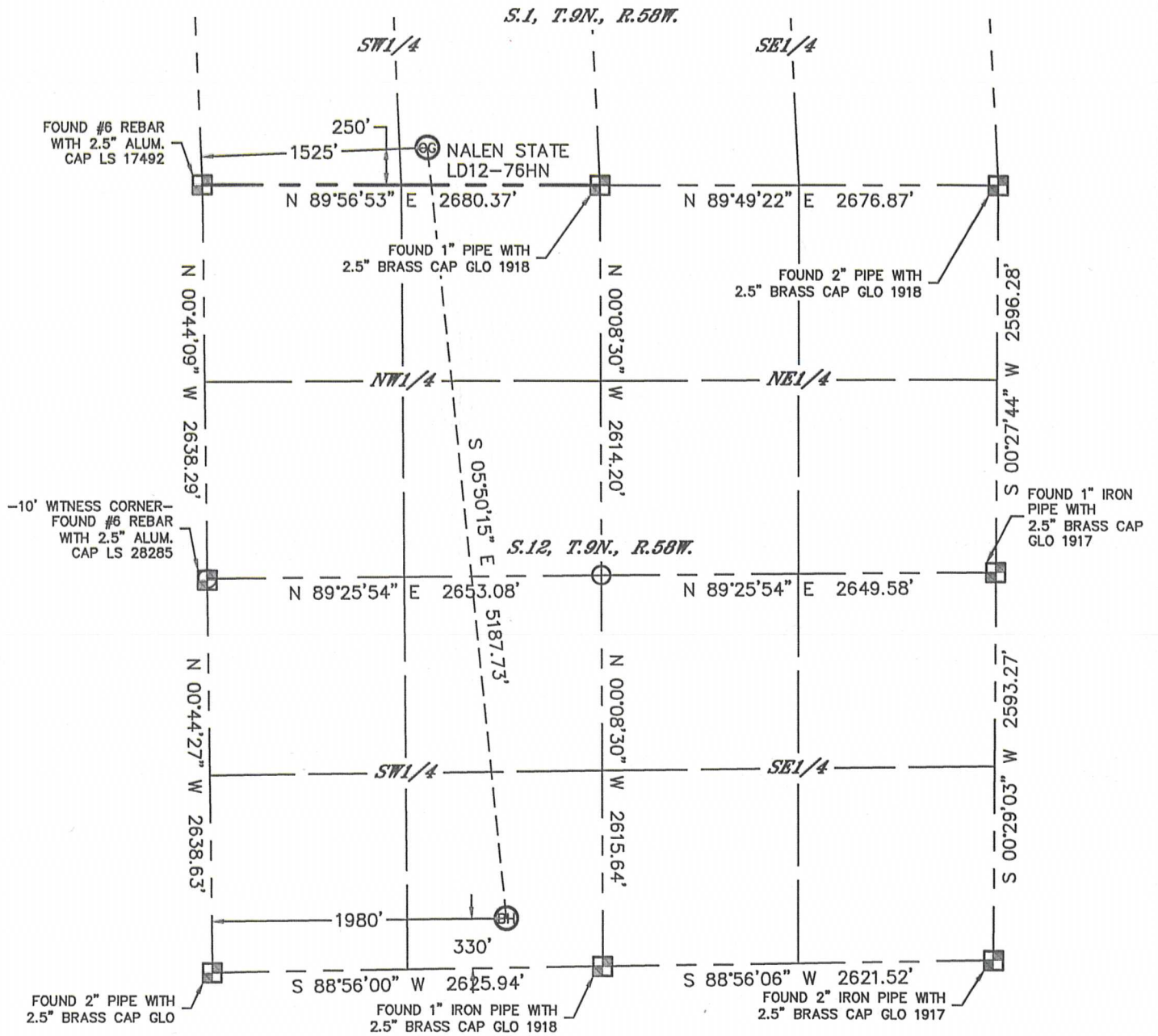


Lat40°, Inc. 1635 Foxtrail Drive, Suite 325 Loveland, CO 970-776-3321

# WELL LOCATION CERTIFICATE

THIS MAP DOES NOT REPRESENT A BOUNDARY SURVEY

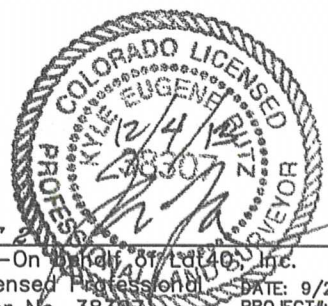
SECTION: 1  
TOWNSHIP: 9N  
RANGE: 58W



LEGEND

⊙ = ALIQUOT MONUMENT AS DESCRIBED

⊙ = CALCULATED POSITION



SHEET 2 OF 2

Kyle E. Rutz-On behalf of Lat40°, Inc.  
Colorado Licensed Professional Land Surveyor No. 38307

DATE: 9/26/2013  
PROJECT#: 2013115

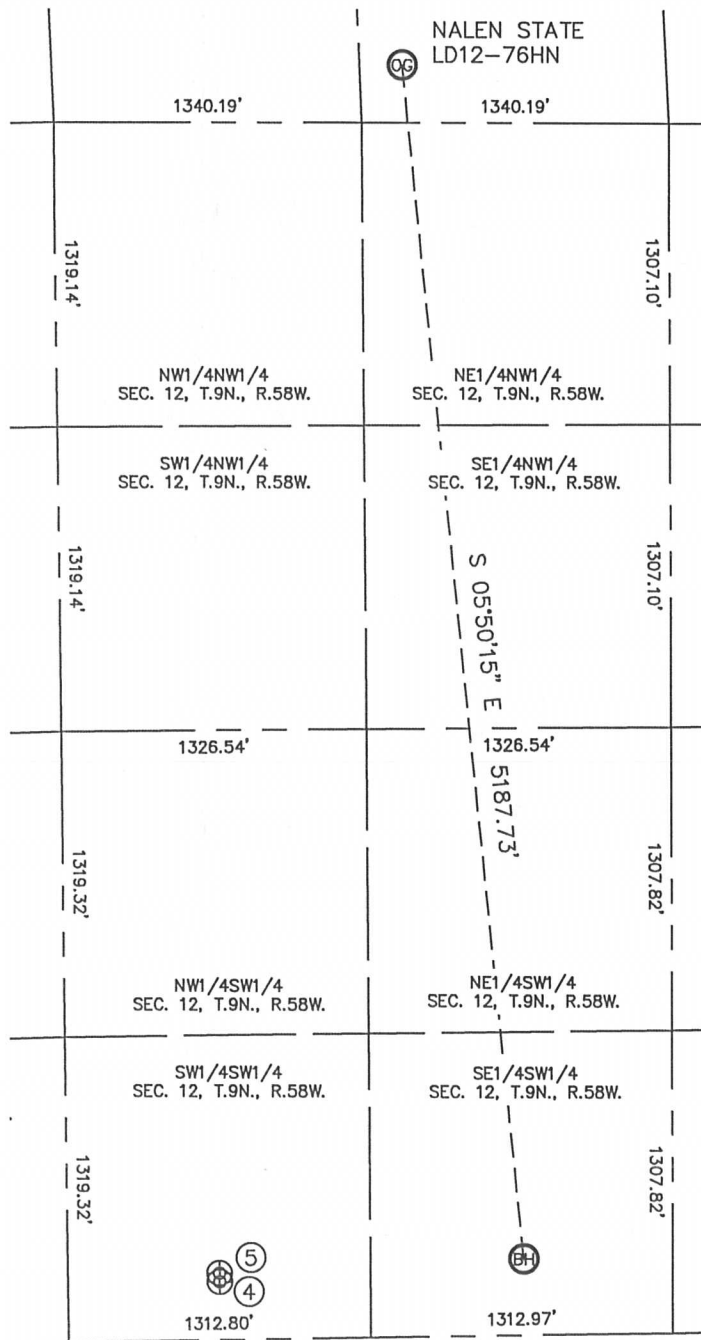


Lat40°, Inc. 1635 Foxtrail Drive, Suite 325 Loveland, CO 970-776-3321

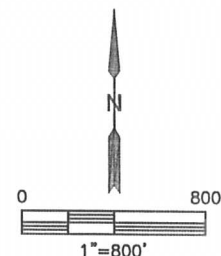
# SITE SKETCH

## NALEN STATE LD12-76HN

SECTION: 1  
TOWNSHIP: 9N  
RANGE: 58W



WELL NO.	WELL NAME	SHL FOOTAGE			SHL LAT°	SHL LONG°	PDOP	ELEV (FT.)	1/4/1/4	
4	CASTOR FEDERAL LD13-78HN	250	FSL	661	FWL	40.75957	-103.81935	2.5	4631	SWSW
5	CASTOR LD12-78HN	288	FSL	661	FWL	40.75968	-103.81934	2.5	4631	SWSW



DATE: 12/4/2013  
PROJECT#: 2013115