

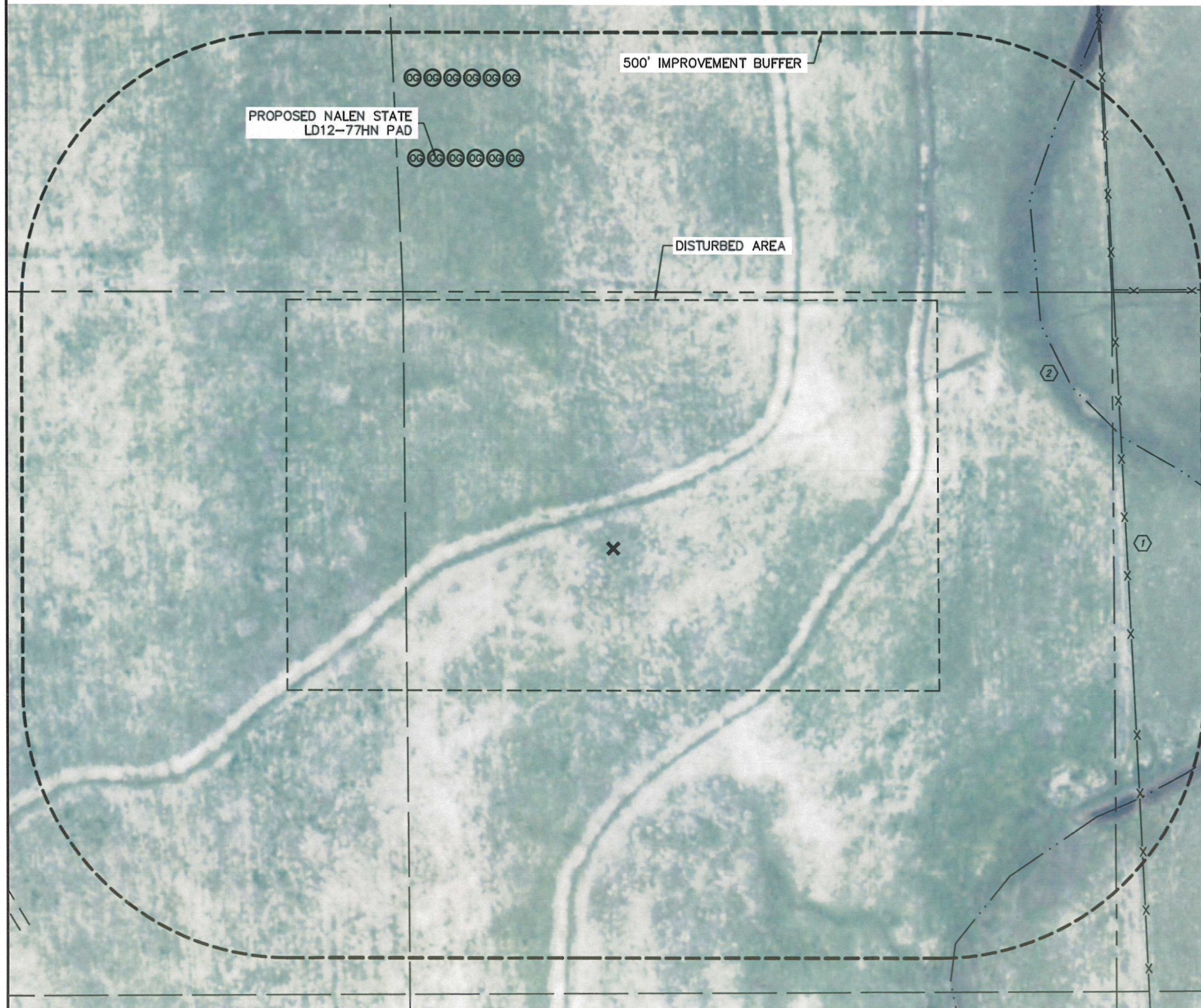


Lat40°, Inc. 1635 Foxtrail Drive, Suite 325 Loveland, CO 970-776-3321

LOCATION DRAWING

LD12 PRODUCTION FACILITY

SECTION: 12
TOWNSHIP: 9N
RANGE: 58W



IMPROVEMENTS:

- NO BUILDING UNITS WITHIN 500' IMPROVEMENT BUFFER
- NO BUILDINGS WITHIN 500' IMPROVEMENT BUFFER
- FENCE 970' E, 1065' NE
- SWALE 913' NE, 965' SE

REFERENCE POINT LOCATION:

LAT: 40.77196°N
LONG: 103.81539°W
ELEV: 4642'
PDOP: 2.0
DATE: 12/5/2013
OPERATOR: BRIAN ROTTINGHAUS
1/41/4: NE1/4NW1/4
FNL: 480'
FWL: 1729'
DISTANCE TO WELL: 752'
ASSOCIATED NEW WELLS:

GRIFFITH STATE LD12-79HN, GRIFFITH STATE LD12-79-1AHN, NALEN STATE LD12-78-1BHN, MORTON STATE LD01-79HN, MORTON STATE LD01-79-1AHN, MORTON STATE LD01-79-1BHN, MORTON STATE LD01-78HN, MORTON STATE LD01-78-1AHN, NALEN STATE LD12-77HN, NALEN STATE LD12-77-1AHN, NALEN STATE LD12-77-1BHN, NALEN STATE LD12-76HN, NALEN STATE LD12-76-1AHN, ATWATER STATE LD01-78-1BHN, ATWATER STATE LD01-77HN, ATWATER STATE LD01-77-1AHN, ATWATER STATE LD01-77-1BHN, ATWATER STATE LD01-76HN, ATWATER STATE LD01-76-1AHN, SMITH STATE LD12-74-1BHN, SMITH STATE LD12-73HN, SMITH STATE LD12-73-1AHN, SMITH STATE LD12-73-1BHN, SMITH STATE LD12-72HN, SMITH STATE LD12-72-1AHN, MECKLENBURG STATE LD01-74-1BHN, MECKLENBURG STATE LD01-73HN, MECKLENBURG STATE LD01-73-1AHN, MECKLENBURG STATE LD01-73-1BHN, MECKLENBURG STATE LD01-72HN, MECKLENBURG STATE LD01-72-1AHN, MCCAFFREY STATE LD12-76-1BHN, MCCAFFREY STATE LD12-75HN, MCCAFFREY STATE LD12-75-1AHN, MCCAFFREY STATE LD12-75-1BHN, MCCAFFREY STATE LD12-74HN, MCCAFFREY STATE LD12-74-1AHN, ELWAY STATE LD01-76-1BHN, ELWAY STATE LD01-75HN, ELWAY STATE LD01-75-1AHN, ELWAY STATE LD01-75-1BHN, ELWAY STATE LD01-74HN, ELWAY STATE LD01-74-1AHN

ASSOCIATED EXISTING WELLS:
NONE

- REFERENCE POINT
ALL DISTANCES ARE APPROXIMATE.

NEAREST: BUILDING 5280'+, BUILDING UNIT 5280'+,
HIGH OCCUPANCY BUILDING UNIT 5280'+,
DESIGNATED OUTSIDE ACTIVITY AREA 5280'+, PUBLIC ROAD 5280'+,
ABOVE GROUND UTILITY 5280'+, RAILROAD 5280'+, PROPERTY LINE 480' N

DATE: 12/11/2013
PROJECT#: 2013115