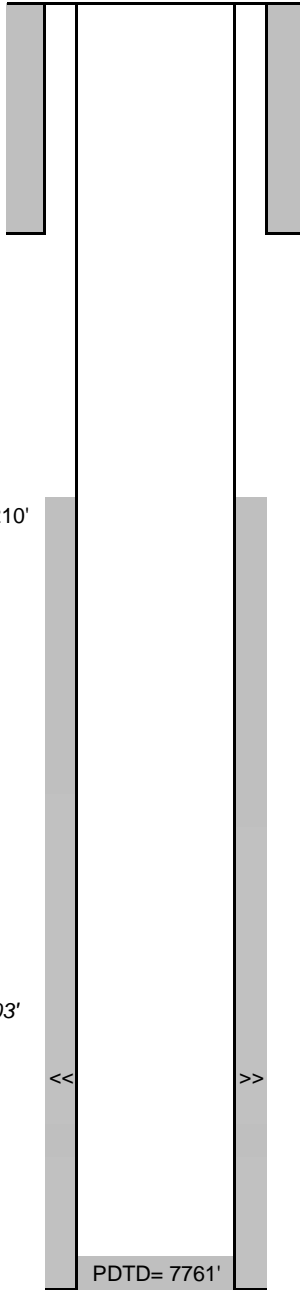


WELLBORE DIAGRAM

Peterson Energy Operating
392 Ventures 42-22D
 SENW Sec. 22, T6N-R67W
 SHL: 1548' FNL, 2420' FWL
 BHL: 2001' FNL, 665' FEL
 Weld County, CO
 05-123-34011

Updated
 2/28/2012
 RO

G.L.= 4783
 K.B.= 4797
 14



8-5/8" set at 459'
 Cmt't w/ 217 sx to Surf.

CBL TOC: 2210'

Niobrara: 7303'

Codell: 7618'

Codell: 7621'-7633', 4 spf
 Frac Codell 2/29/12 w/ 247254 gal slickwater containing 150541# 30/50 sand

PDTD= 7761'
 TD MD= 7790'
 TD VD=7336'

4-1/2" 11.6# CSG @ 7768' (7-7/8" O.H.)
 Cmt'd w/ 750 sx