

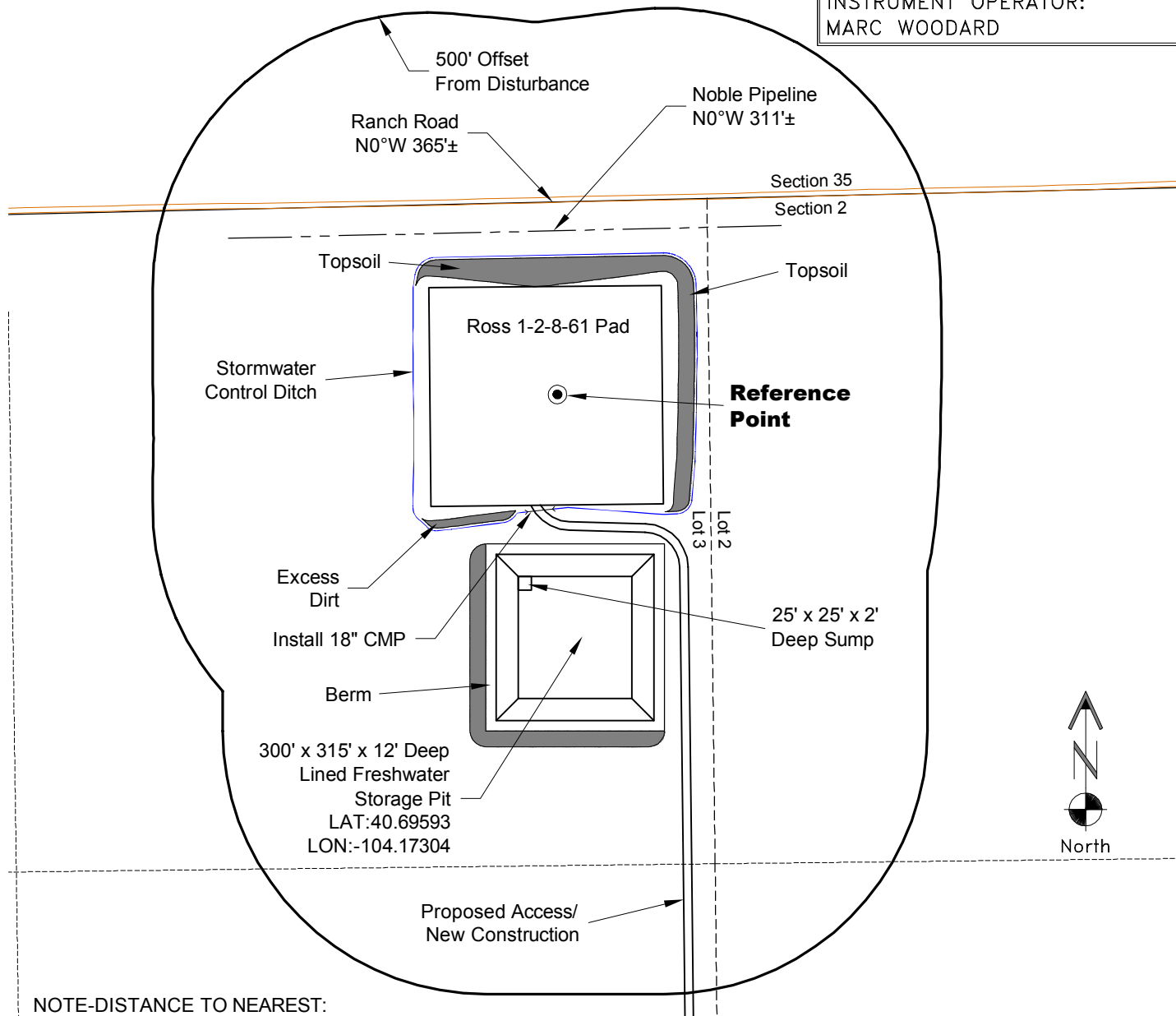
LOCATION DRAWING

PLANT COMMUNITY:
DISTURBED GRASSLAND

SURFACE USE:
CRP

REFERENCE POINT

LATITUDE: 40.69718
LONGITUDE: -104.17315
FOOTAGE: 366 FNL 2372 FWL
GROUND ELEVATION: 5024.6
PDOP: 1.8 DATE: 5/14/2013
INSTRUMENT OPERATOR: MARC WOODARD



NOTE-DISTANCE TO NEAREST:

Property Line - E 289'
Public Road - WCR 95 - S 31° E 5,670'±
Building - S 3° E 2,630'±
Railroad - UPRR S 35° W 28 Miles ±
Powerline - E 2,990'±

DISTURBANCE ACREAGE:
7.0± DRILLING OPERATION

NOTE:
ALL PRODUCTION FACILITIES WILL BE ON PAD.

10/8/13



LAND SURVEYING AND MAPPING
LAFAYETTE - WINTER PARK
Ph 303 666 0379 Fx 303 665 6320

CARRIZO NIOBRARA LLC
ROSS 1-2-8-61 PAD

LOT 3 SECTION 2 T8N R61W
6th PM WELD COUNTY COLORADO