

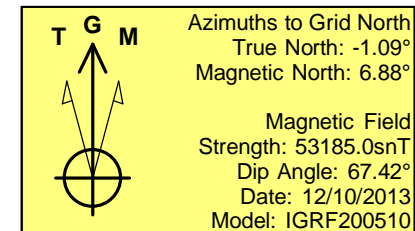
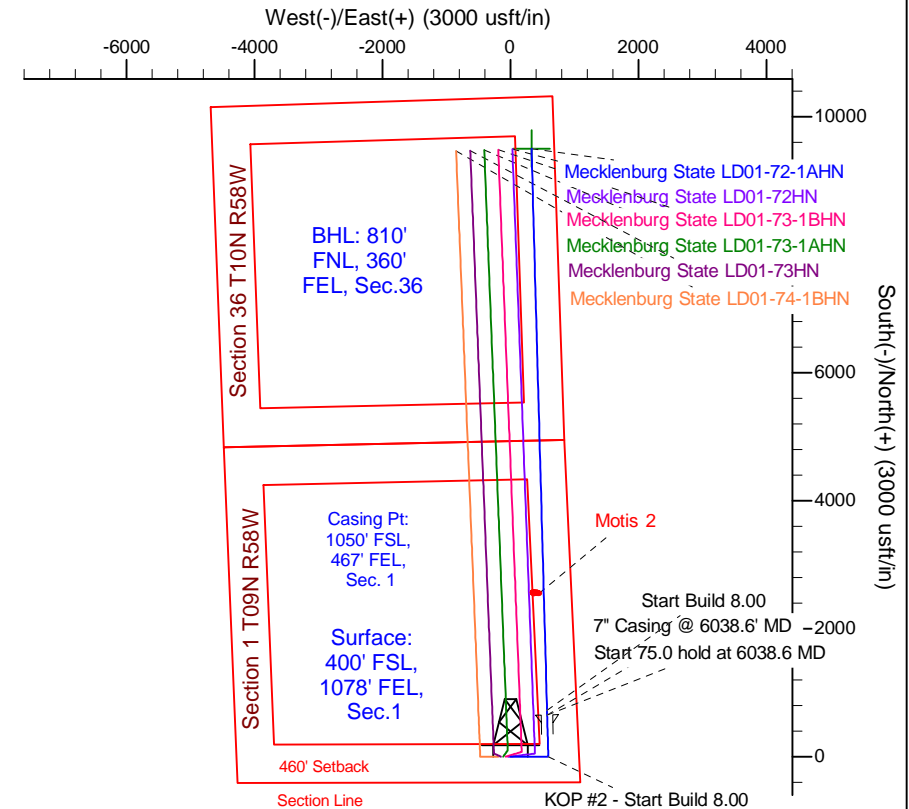
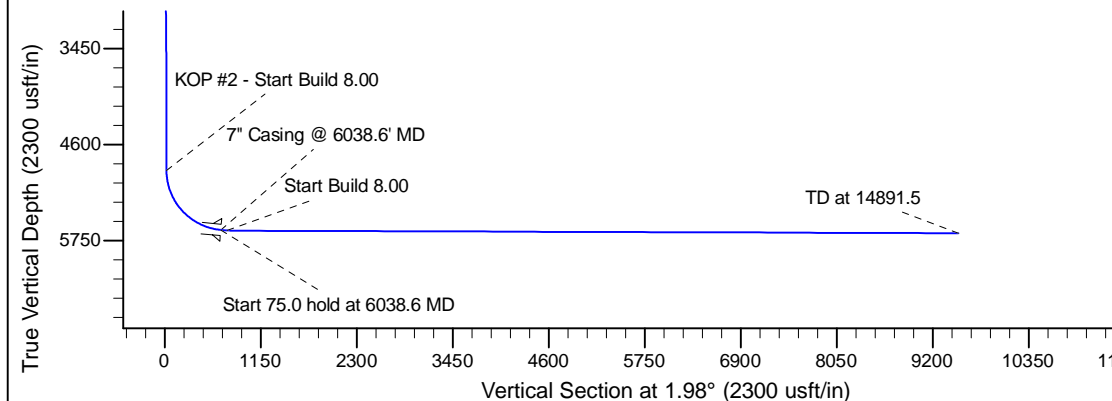
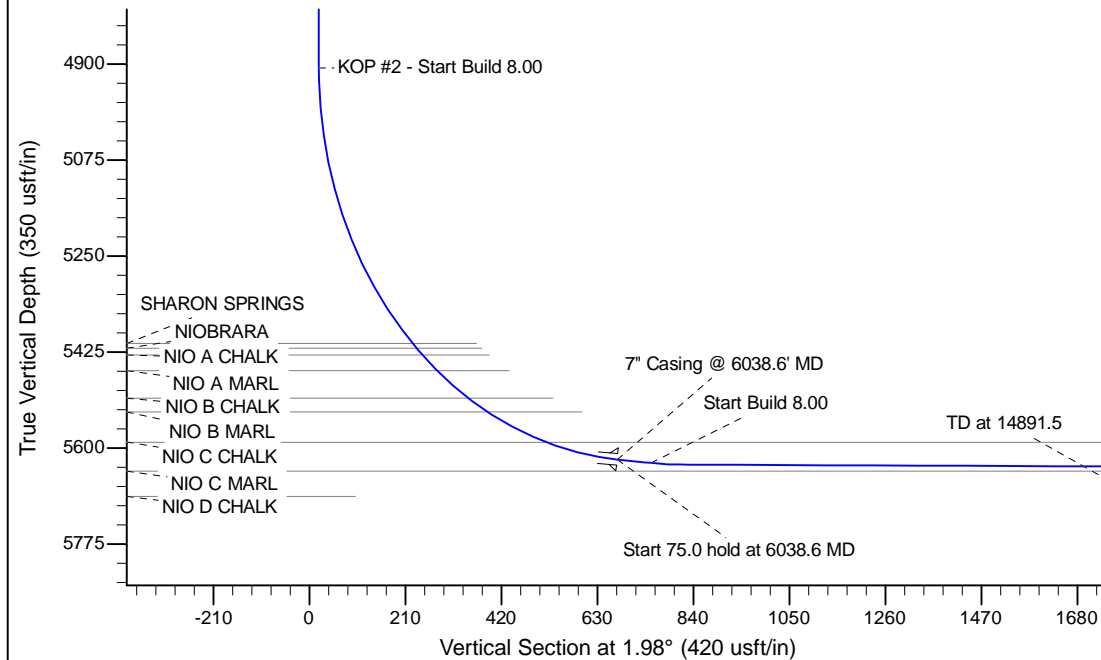
Project: Wattenberg Field
 Site: LD (09N-58W)
 Well: Mecklenburg State LD01-72-1AHN
 Wellbore: Original Drilling
 Design: APD - Rev 0

Northern Region Drilling - Working

Geodetic System: US State Plane 1983
 Datum: North American Datum 1983
 Ellipsoid: GRS 1980
 Zone: Colorado Northern Zone
 System Datum: Mean Sea Level

SECTION DETAILS									
Sec	MD	Inc	Azi	TVD	+N/-S	+E/-W	Dleg	TFace	Vsect
1	0.0	0.00	0.00	0.0	0.0	0.0	0.00	0.00	0.0
2	1200.0	0.00	0.00	1200.0	0.0	0.0	0.00	0.00	0.0
3	1950.6	15.01	90.00	1942.0	0.0	97.8	2.00	90.00	3.4
4	3473.5	15.01	90.00	3413.0	0.0	492.2	0.00	0.00	17.0
5	4224.1	0.00	0.00	4155.0	0.0	590.0	2.00	180.00	20.4
6	4976.1	0.00	0.00	4907.0	0.0	590.0	0.00	0.00	20.4
7	6038.6	85.00	358.42	5620.5	653.5	572.0	8.00	358.42	672.9
8	6113.6	85.00	358.42	5627.0	728.2	569.9	0.00	0.00	747.4
9	6173.6	89.80	358.42	5629.8	788.1	568.3	8.00	0.00	807.2
10	14891.5	89.80	358.42	5660.2	9502.6	328.0	0.00	0.00	9508.3

Mecklenburg St. LD01-72-1AHN BHL 810'FNL, 360'FEL



WELL DETAILS: Mecklenburg State LD01-72-1AHN				
Ground Level: 4655.0				
0.0	0.0	1529389.00	3469102.35	-103.806220
Plan: APD - Rev 0 (Mecklenburg State LD01-72-1AHN/Original Drilling)				
Created By: Shailey Jewell Date: 9:42, February 11 2014				

OK to submit with 2A as per Noble Drilling
 2/11/2014 11:27