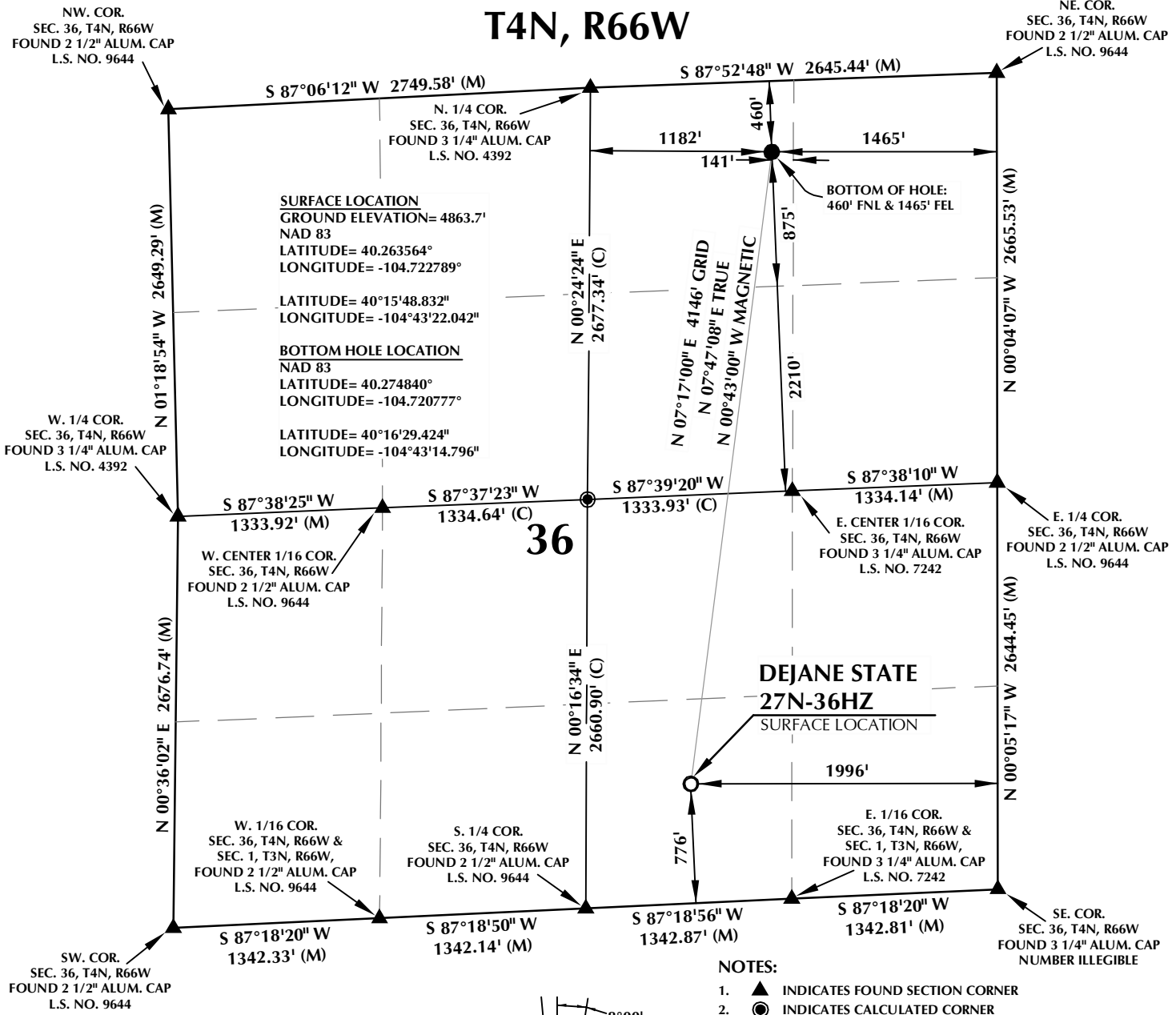


# T4N, R66W

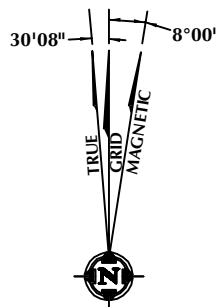
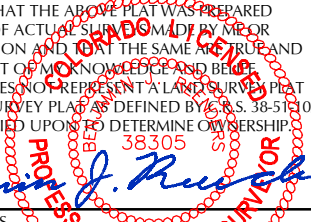


- NOTES:**
- ▲ INDICATES FOUND SECTION CORNER
  - INDICATES CALCULATED CORNER
  - ELEVATION BASED ON NAVD88 (GEOID09)
  - BASIS OF BEARING DERIVED FROM COLORADO COORDINATE SYSTEM 1983 NORTH ZONE UNLESS OTHERWISE NOTED.
  - ALL MEASURED DISTANCES ARE GRID. COMBINED SCALE FACTOR: .99972797
  - OPERATOR: ROB WILSON / PDOP = 1.6
  - SURFACE USE OF LOCATION IS DRYLAND CROP.
  - SEE ADDENDUM TO WELL LOCATION CERTIFICATE FOR EXISTING IMPROVEMENTS WITHIN 500' OF THE WELL PAD.
  - WELL FOOTAGES ARE MEASURED AT RIGHT ANGLES TO THE SECTION LINES.
  - THE BOTTOM OF HOLE BEARS N07°17'00"E 4146' FROM THE SURFACE LOCATION.
- SCALE: 1" = 1000'

**CERTIFICATE OF SURVEYOR:**

THIS IS TO CERTIFY THAT THE ABOVE PLAT WAS PREPARED FROM FIELD NOTES OF ACTUAL SURVEY MADE BY ME OR UNDER MY SUPERVISION AND THAT THE SAME ARE TRUE AND CORRECT TO THE BEST OF MY KNOWLEDGE AND BELIEF. THIS CERTIFICATE DOES NOT REPRESENT A LAND SURVEY PLAT OR IMPROVEMENT SURVEY PLAT AS DEFINED BY C.S. 38-51-102 AND CANNOT BE RELIED UPON TO DETERMINE OWNERSHIP.

*Benjamin J. Reenders*  
 BENJAMIN J. REENDERS  
 PROFESSIONAL LAND SURVEYOR  
 COLORADO REGISTRATION NUMBER 43305



NOTE: MAGNETIC NORTH IS CURRENT AS OF 11/8/2013. MAGNETIC NORTH CHANGES WEST 0°08' PER YEAR.

**WELL PAD - DEJANE STATE 2N-36HZ**

**DEJANE STATE 27N-36HZ**  
**WELL LOCATION CERTIFICATE**  
 776' FSL & 1996' FEL SWSE (SURFACE)  
 460' FNL & 1465' FEL NWNE (BOTTOM)  
 LOCATED IN SECTION 36  
 T4N, R66W, 6TH P.M.  
 WELD COUNTY, COLORADO

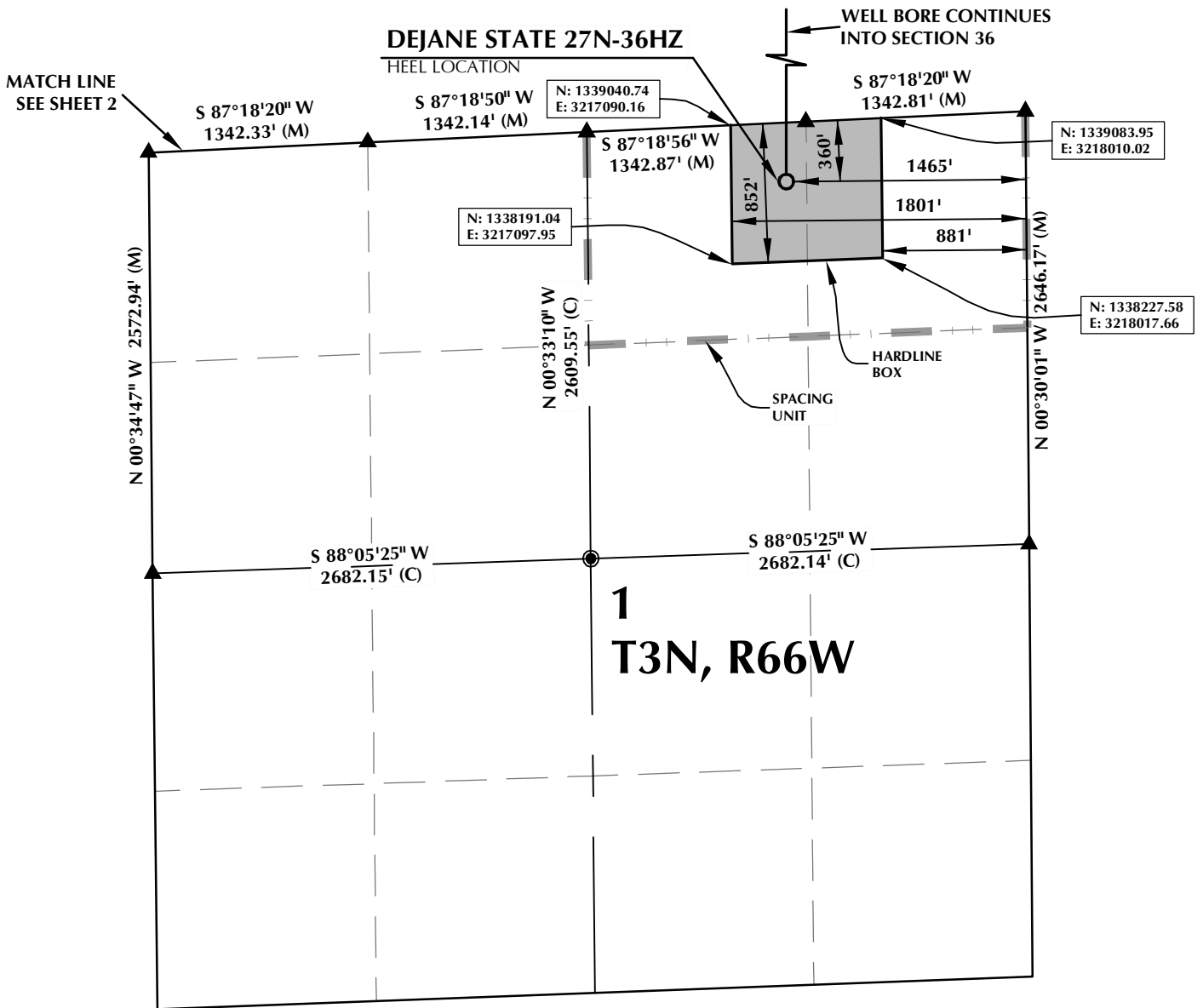
**Kerr-McGee Oil & Gas Onshore L.P.**  
 1099 18th Street  
 Denver, Colorado 80202



**CONSULTING, LLC**  
 SHERIDAN OFFICE: 2155 North Main Street, Sheridan, Wyoming 82801, Phone 307-674-0609  
 LOVELAND OFFICE: 1635 Foxtrail Drive, Suite 204, Loveland, Colorado 80538, Phone 970-776-4331

DRAFTED BY:	LMO	CHECKED BY:	BJR
DATE DRAFTED:	11/8/13	DATE SURVEYED:	10/23/13
REVISED:	1/16/14	FILE NAME:	13-100

# DEJANE STATE 27N-36HZ



**HEEL LOCATION**  
NAD 83  
N: 1,338,696.28'  
E: 3,217,429.99'

**BOTTOM HOLE LOCATION**  
NAD 83  
N: 1,343,920.88'  
E: 3,217,419.65'

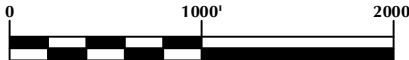
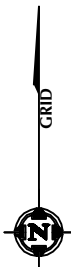
LATITUDE= 40.260498°  
LONGITUDE= -104.720904°

LATITUDE= 40.274840°  
LONGITUDE= -104.720777°

LATITUDE= 40°15'37.794"  
LONGITUDE= -104°43'15.255"

LATITUDE= 40°16'29.424"  
LONGITUDE= -104°43'14.796"

**AVAILABLE FOOTAGE**  
5717'



SCALE: 1" = 1000'

**NOTES:**

- ▲ INDICATES FOUND SECTION CORNER
- INDICATES CALCULATED CORNER
- BASIS OF BEARING DERIVED FROM COLORADO COORDINATE SYSTEM 1983 NORTH ZONE UNLESS OTHERWISE NOTED.
- DRAWING NORTHING / EASTING COORDINATES ARE BASED ON COLORADO COORDINATE SYSTEM 1983 NORTH ZONE UNLESS OTHERWISE NOTED.
- COMBINED SCALE FACTOR: .99972797
- THIS EXHIBIT DOES NOT REPRESENT A LAND SURVEY PLAT OR IMPROVEMENT SURVEY PLAT AS DEFINED BY C.R.S. 38-51-102 AND CANNOT BE RELIED UPON TO DETERMINE OWNERSHIP.

**WELL PAD - DEJANE STATE 2N-36HZ**

DEJANE STATE 27N-36HZ  
SPACING UNIT EXHIBIT  
360' FNL & 1465' FEL NWNE (HEEL)  
LOCATED IN SECTION 1, T3N, R66W, 6TH P.M.  
460' FNL & 1465' FEL NWNE (BOTTOM)  
LOCATED IN SECTION 36, T4N, R66W, 6TH P.M.  
WELD COUNTY, COLORADO

**Kerr-McGee Oil &  
Gas Onshore L.P.**  
1099 18th Street  
Denver, Colorado 80202



**CONSULTING, LLC**

**SHERIDAN OFFICE**  
2155 North Main Street  
Sheridan, Wyoming 82801  
Phone 307-674-0609

**LOVELAND OFFICE**  
1635 Foxtrail Drive, Suite 204  
Loveland, Colorado 80538  
Phone 970-776-4331

DRAFTED BY:	LMO	CHECKED BY:	BJR	SHEET NO:
DATE DRAFTED:	11/8/13	DATE SURVEYED:	10/23/13	<b>1</b>
REVISED:	2/13/14	FILE NAME:	13-100	1 OF 2