



Cathedral Energy

145022

5":100' - MD

1/27/2014 5:36:21 PM

Oper. Company: Encana  
Country: USA  
State / Province: Colorado  
County / Parish: Weld

API/UWI: 051233620400  
Field: DJ Basin  
Well: Liberty 2D-21H  
Rig: Ensign 135

### Personnel

Day Hand: John Corby  
Night Hand: Brett Giannino

### Location

Latitude: 40.215200  
Longitude: -105.008780  
Elev. GL: 5023  
Elev. DF: 5036  
Elev. KB: 5036

### Hole Data

Size	From	To
8.75	915	7421
6.125	7421	11440

### Casing Data

Size	From	To
9 5/8	913	7384

### Mud Data

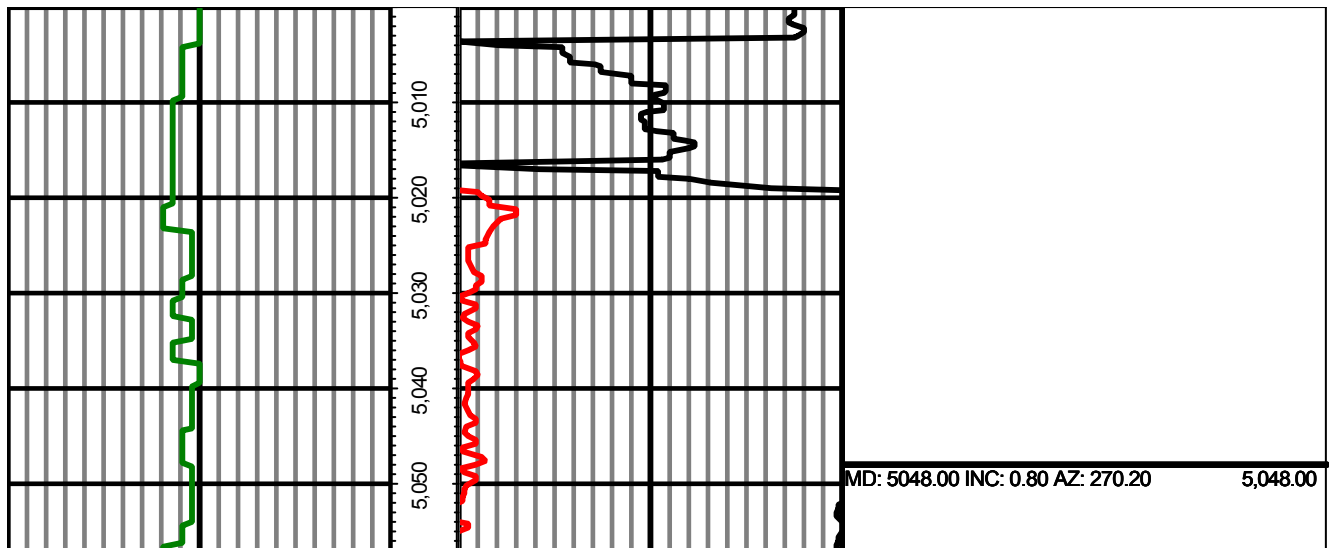
Weight	From	To
--------	------	----

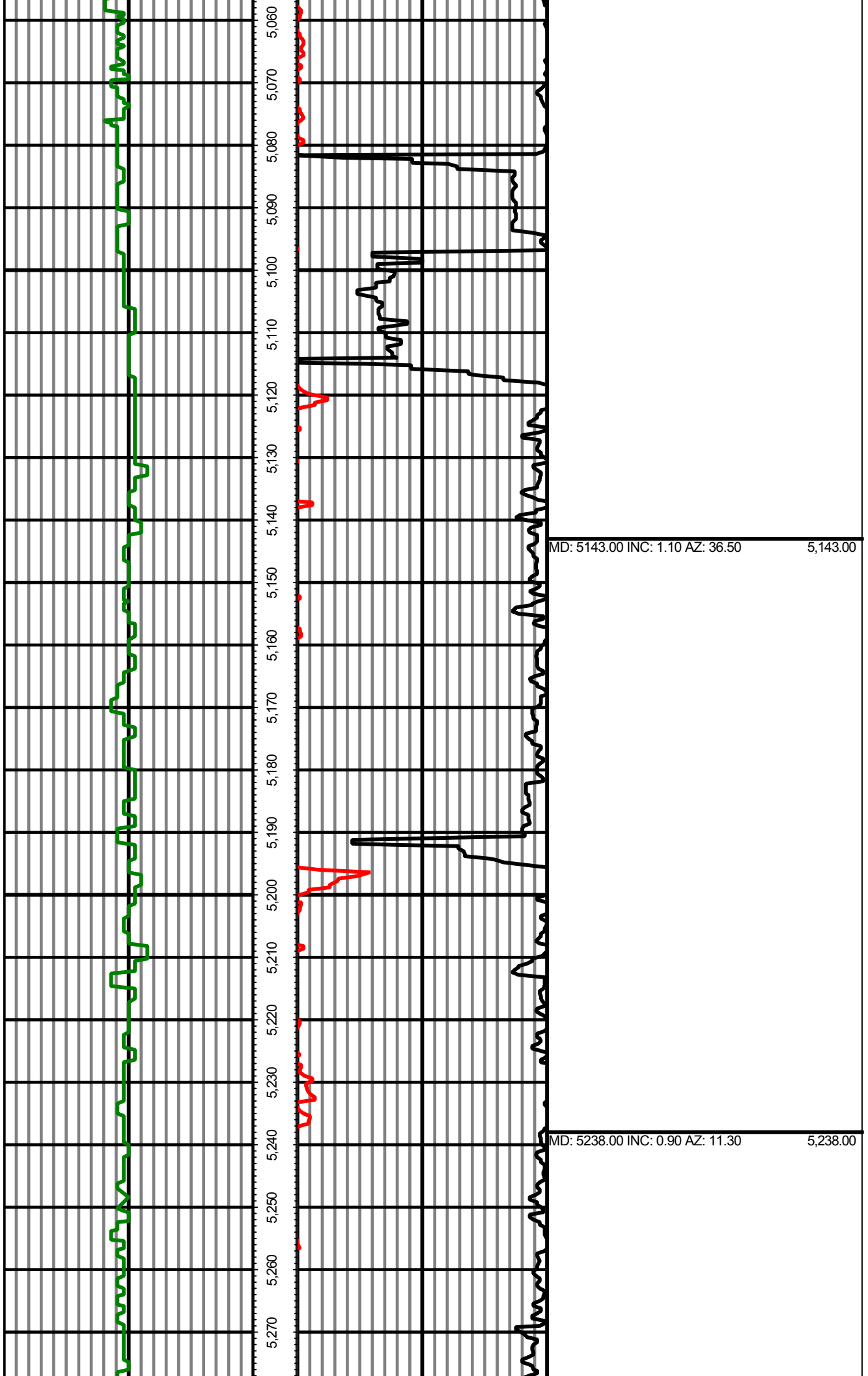
### Tool Run Data

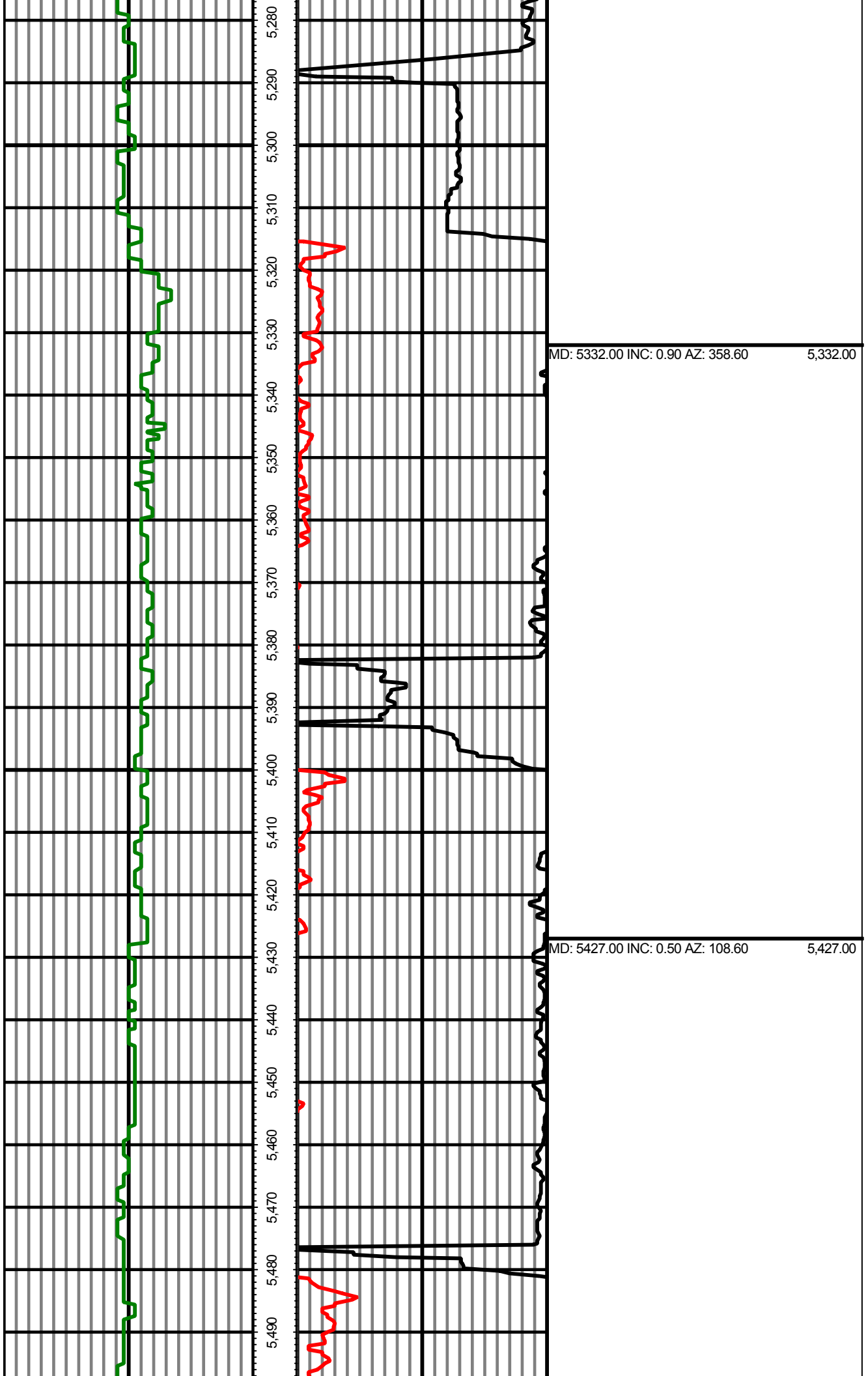
Serial Number	Gamma Offset	Resist. Offset	Start Time	Start Depth	End Time	End Depth
1075	37.77	0	1/21/2014 10:00:30 AM	915	1/28/2014 7:00:30 AM	7421
199	38.54	0	1/25/2014 12:30:46 PM	7421	1/26/2014 5:00:46 PM	9571
1075	35.96	0	1/26/2014 5:30:40 PM	9571	1/28/2014 7:00:40 AM	11440

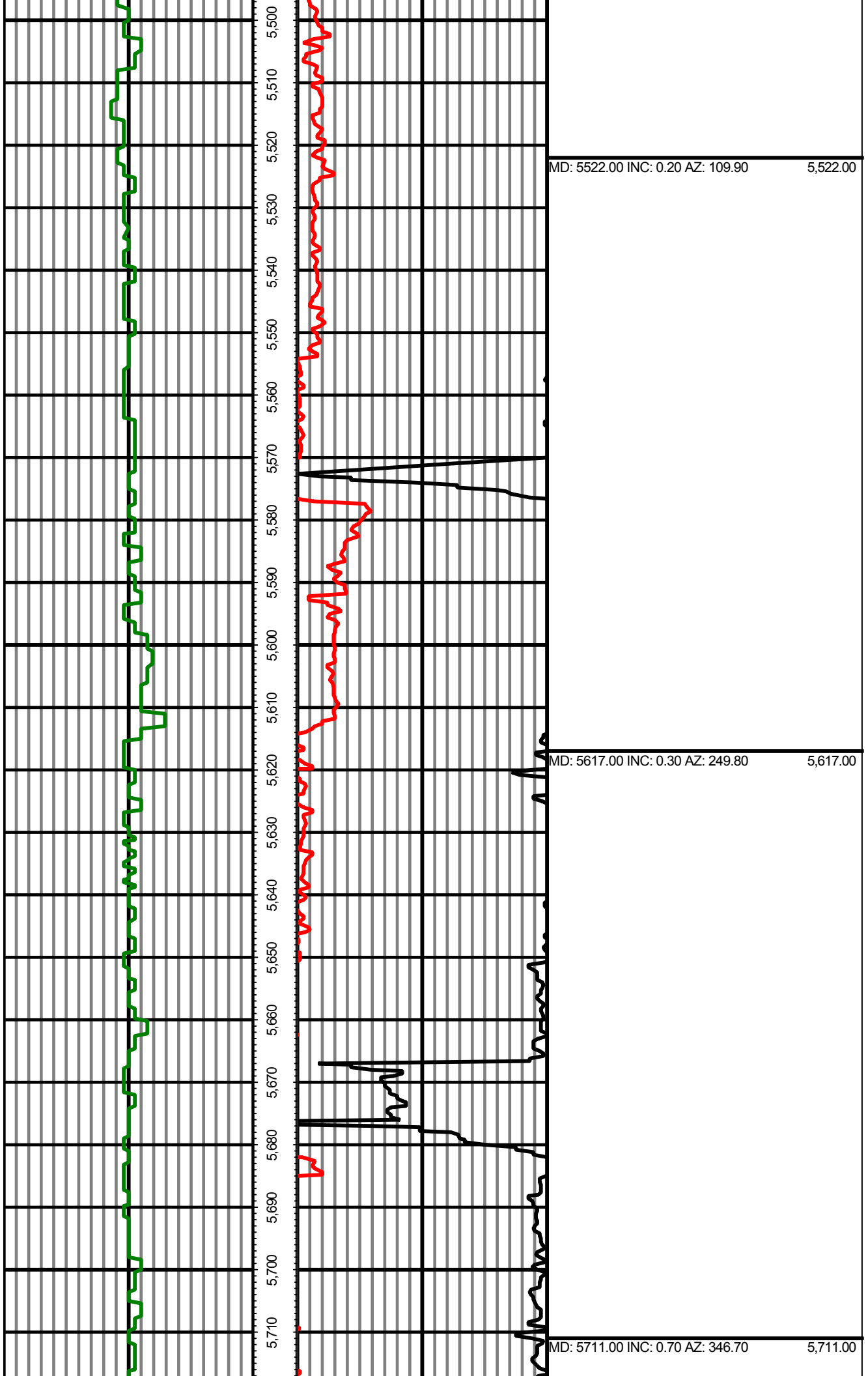
All interpretations are opinions based on inferences from electrical or other measurements and we cannot and do not guarantee the accuracy or correctness of any interpretation, and we shall not except in the case of gross or willful negligence on our part, be liable or responsible for any loss, cost damages or expenses incurred or sustained by anyone resulting from an interpretation made by any of our officers, agents, or employees.

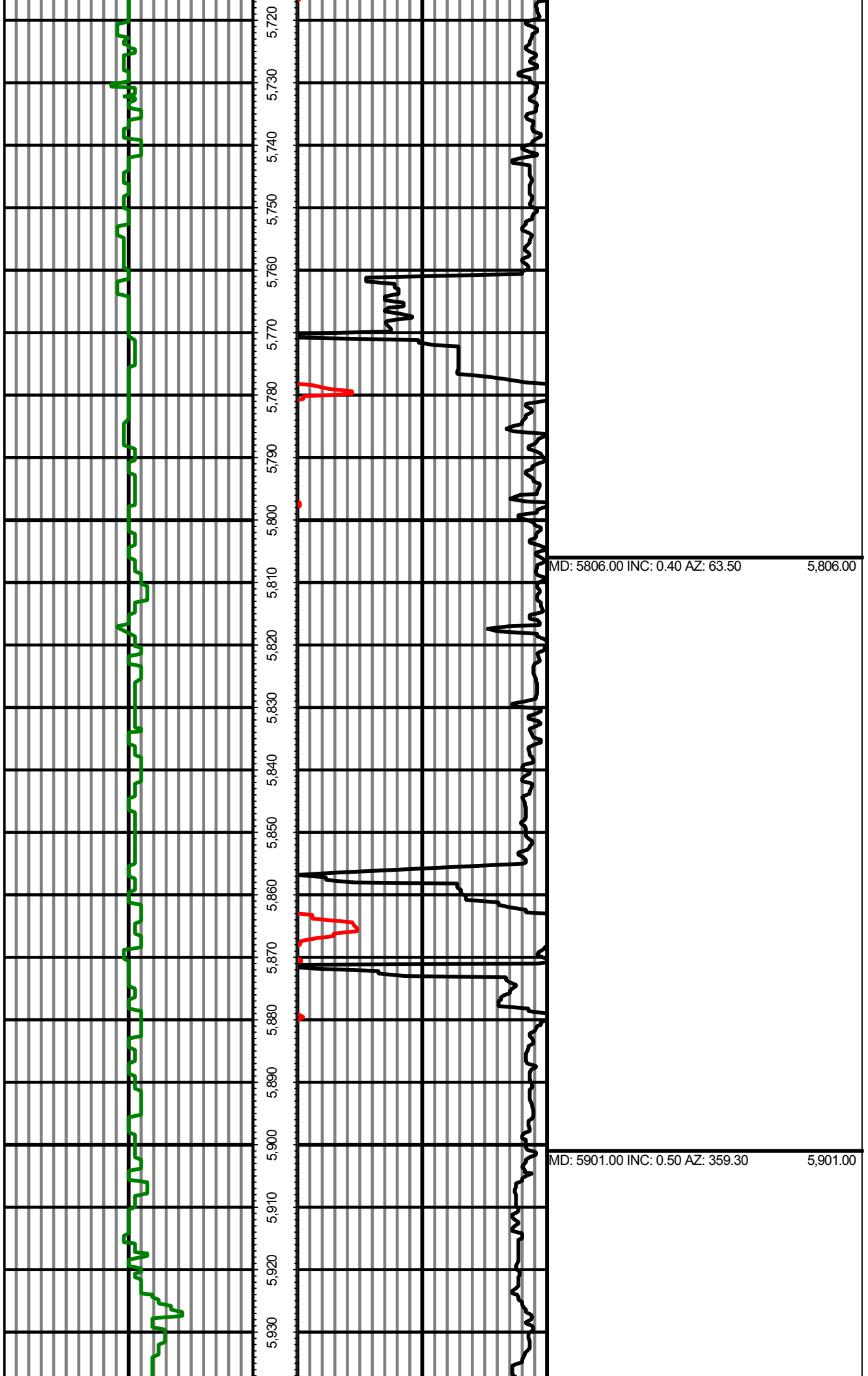
0.00 GR(API) on MD 150.00 MD 0.00 ROP(FT/HR) on MD 300.00 Surveys (MD/INC/AZ)  
150.00 2 300.00 FT 300.00 2 600.00

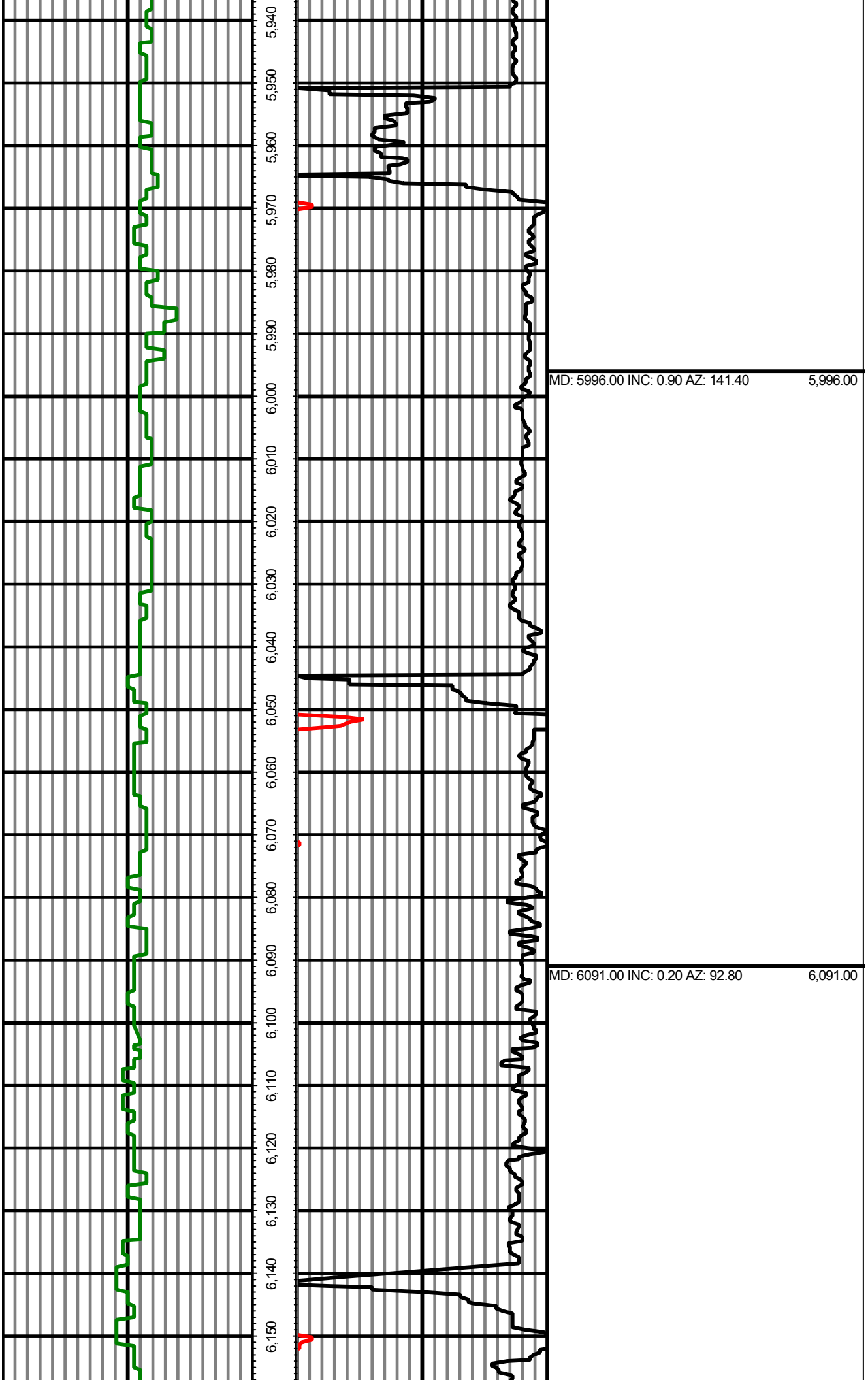


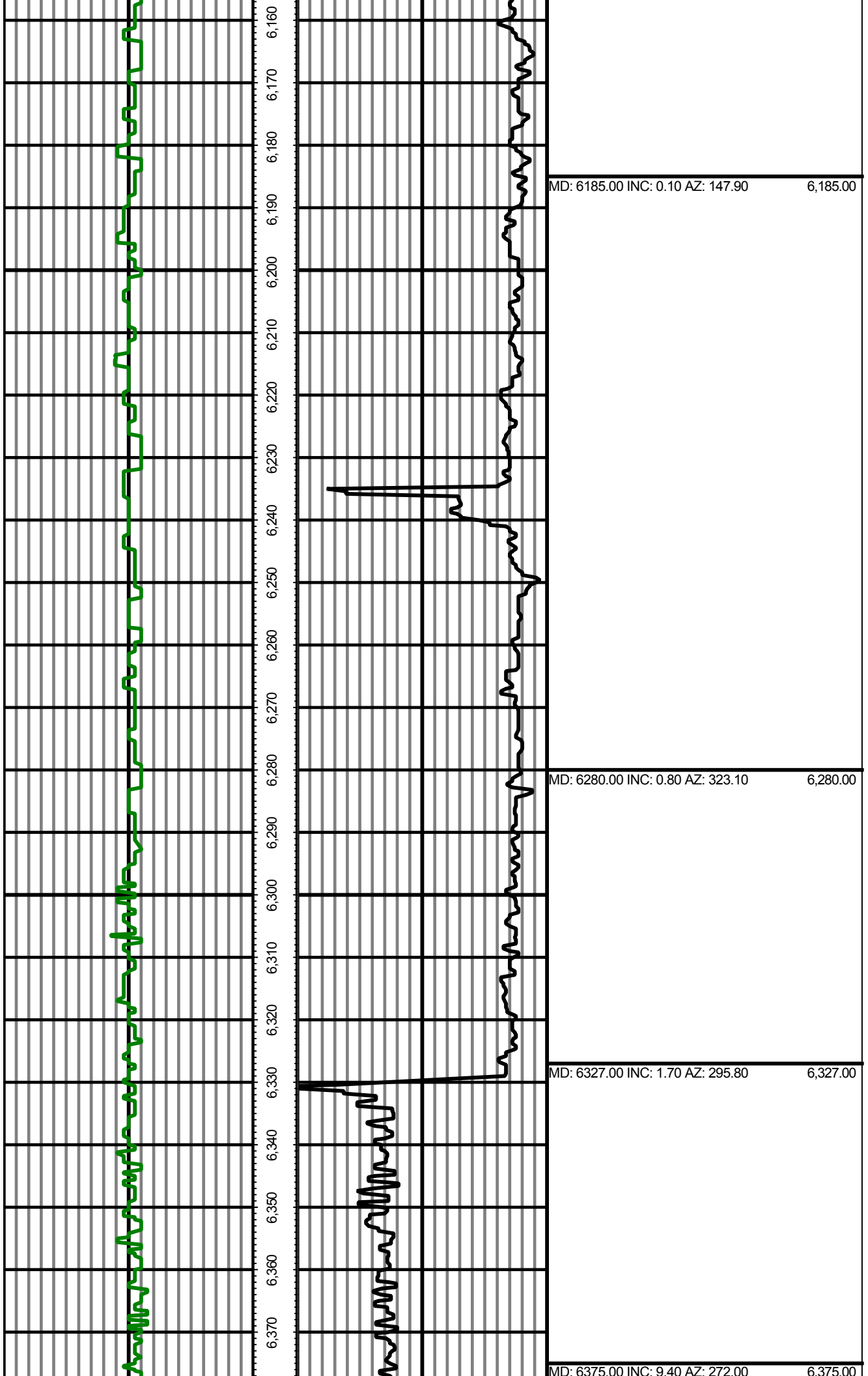


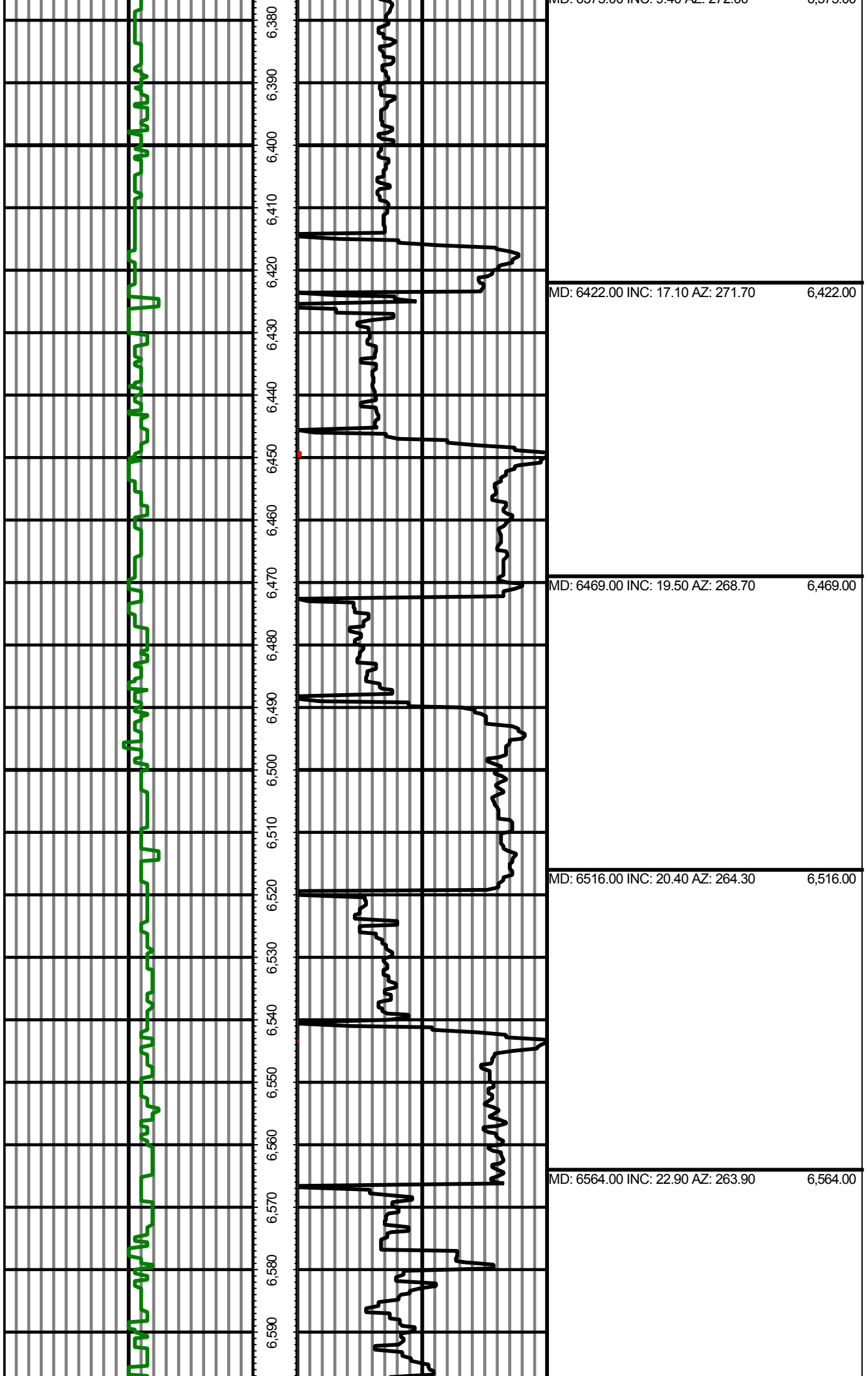


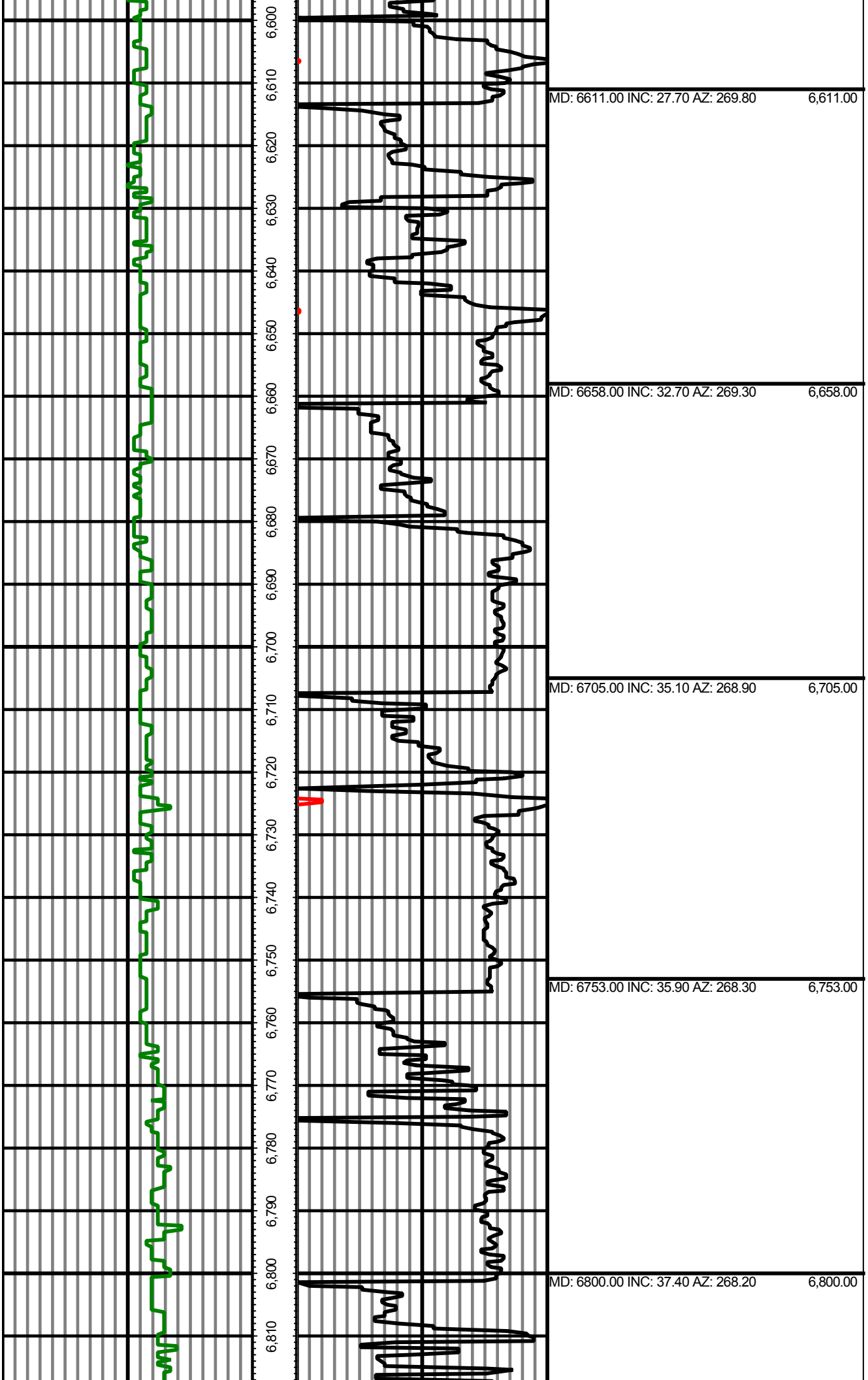


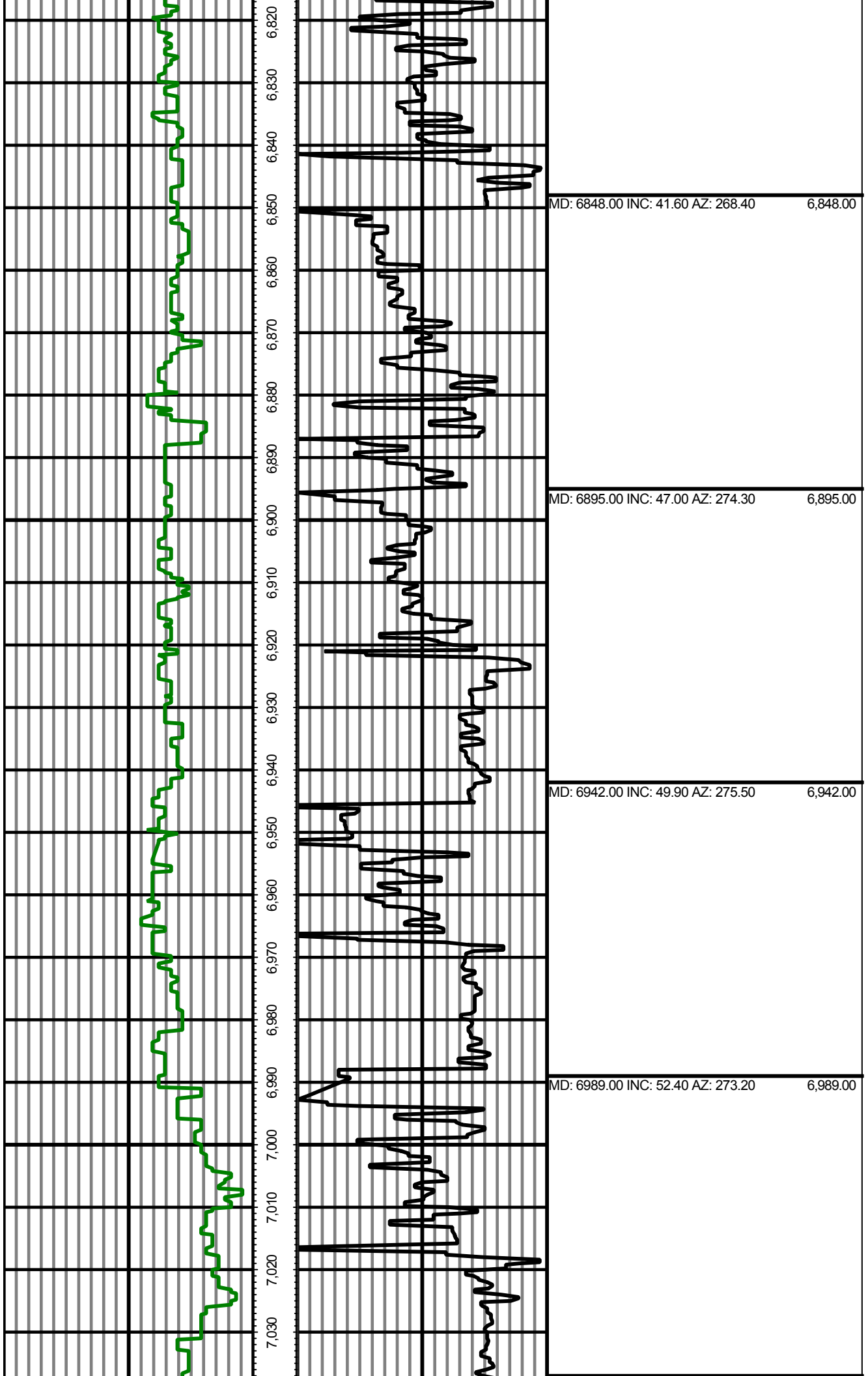


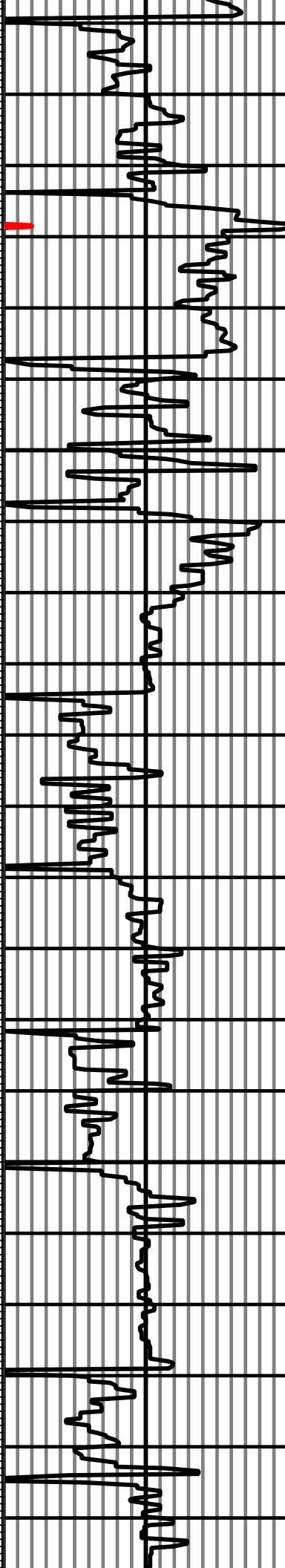
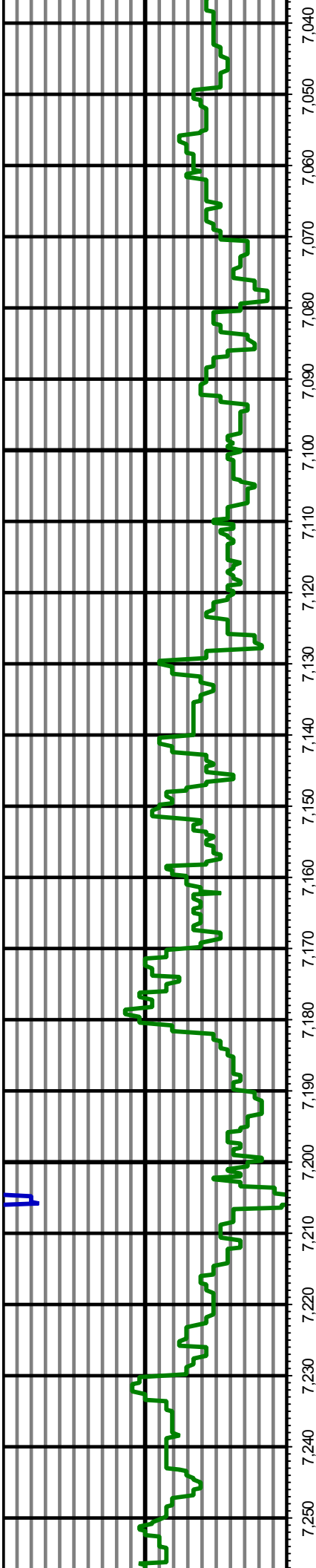












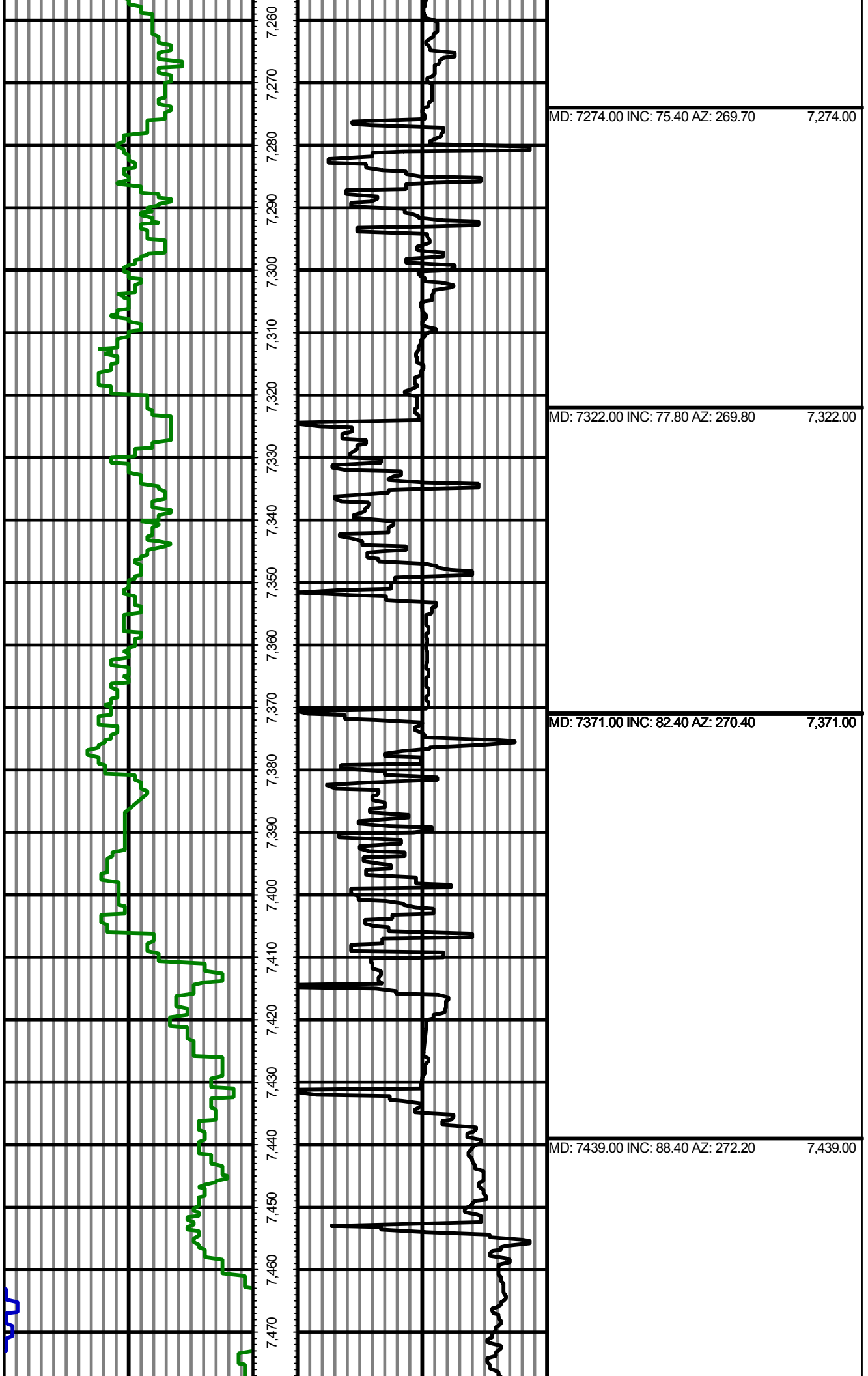
MD: 7037.00 INC: 56.40 AZ: 271.70 7,037.00

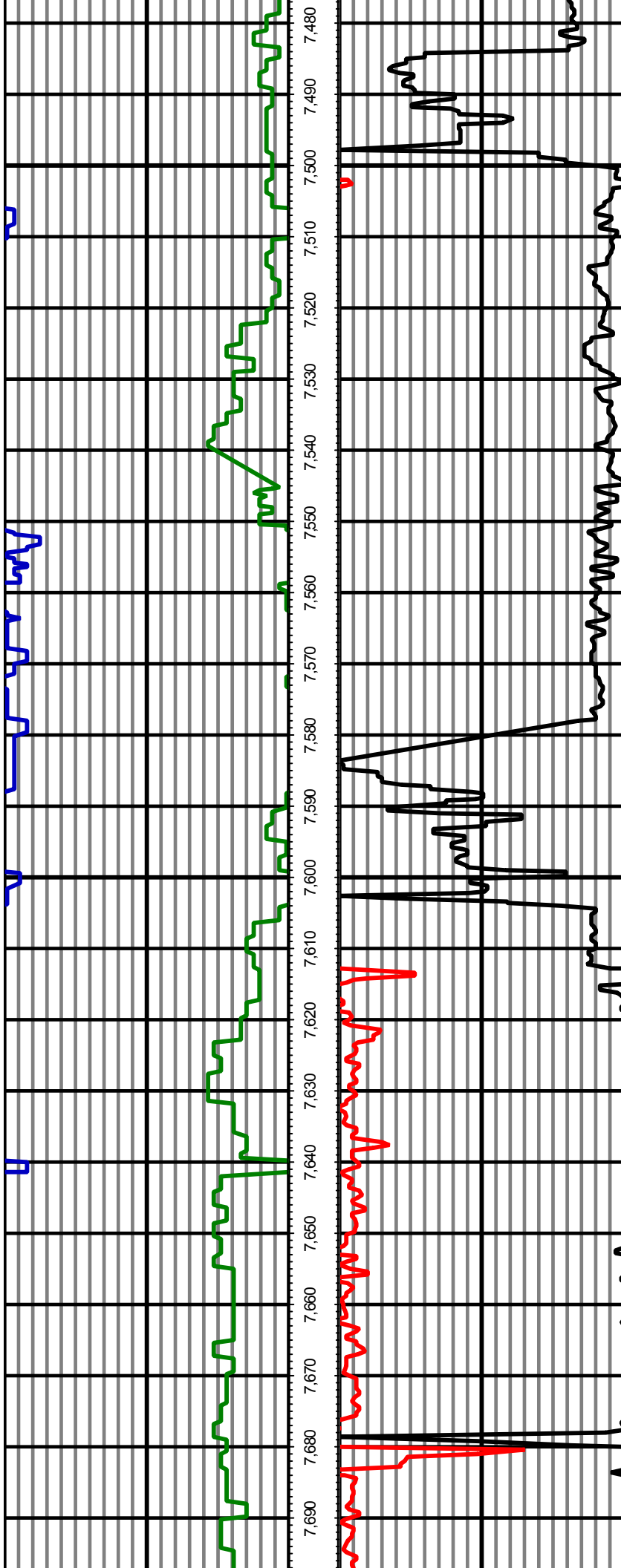
MD: 7084.00 INC: 60.20 AZ: 271.50 7,084.00

MD: 7132.00 INC: 64.00 AZ: 271.10 7,132.00

MD: 7179.00 INC: 69.10 AZ: 269.70 7,179.00

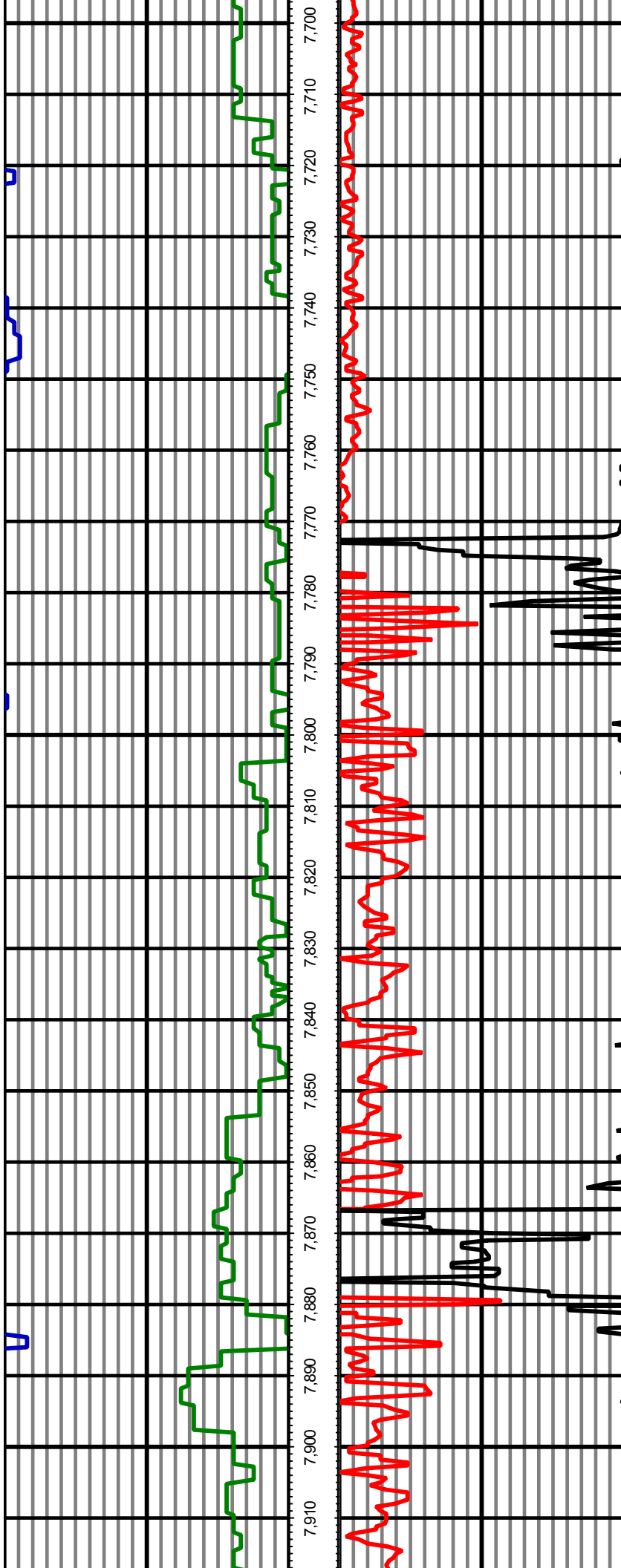
MD: 7227.00 INC: 73.10 AZ: 269.70 7,227.00





MD: 7533.00 INC: 89.50 AZ: 270.20 7,533.00

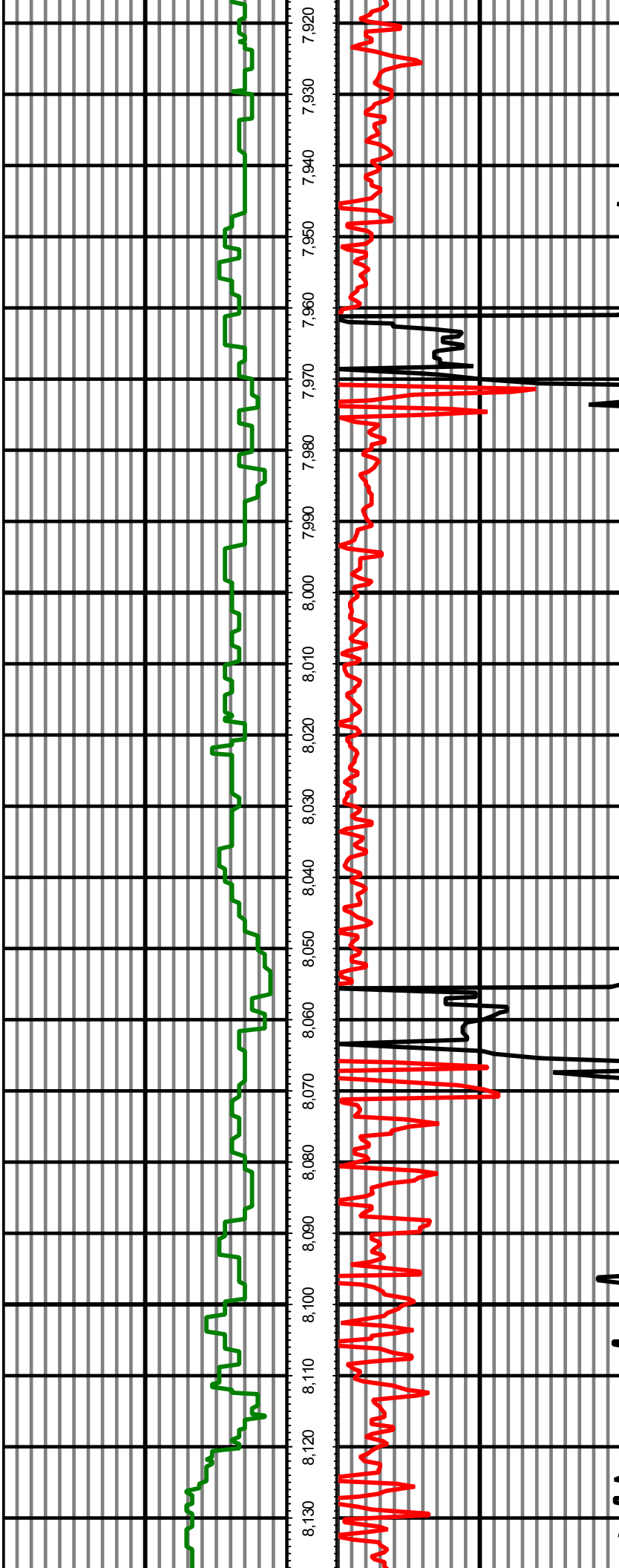
MD: 7628.00 INC: 92.70 AZ: 269.00 7,628.00



MD: 7723.00 INC: 93.20 AZ: 268.60 7,723.00

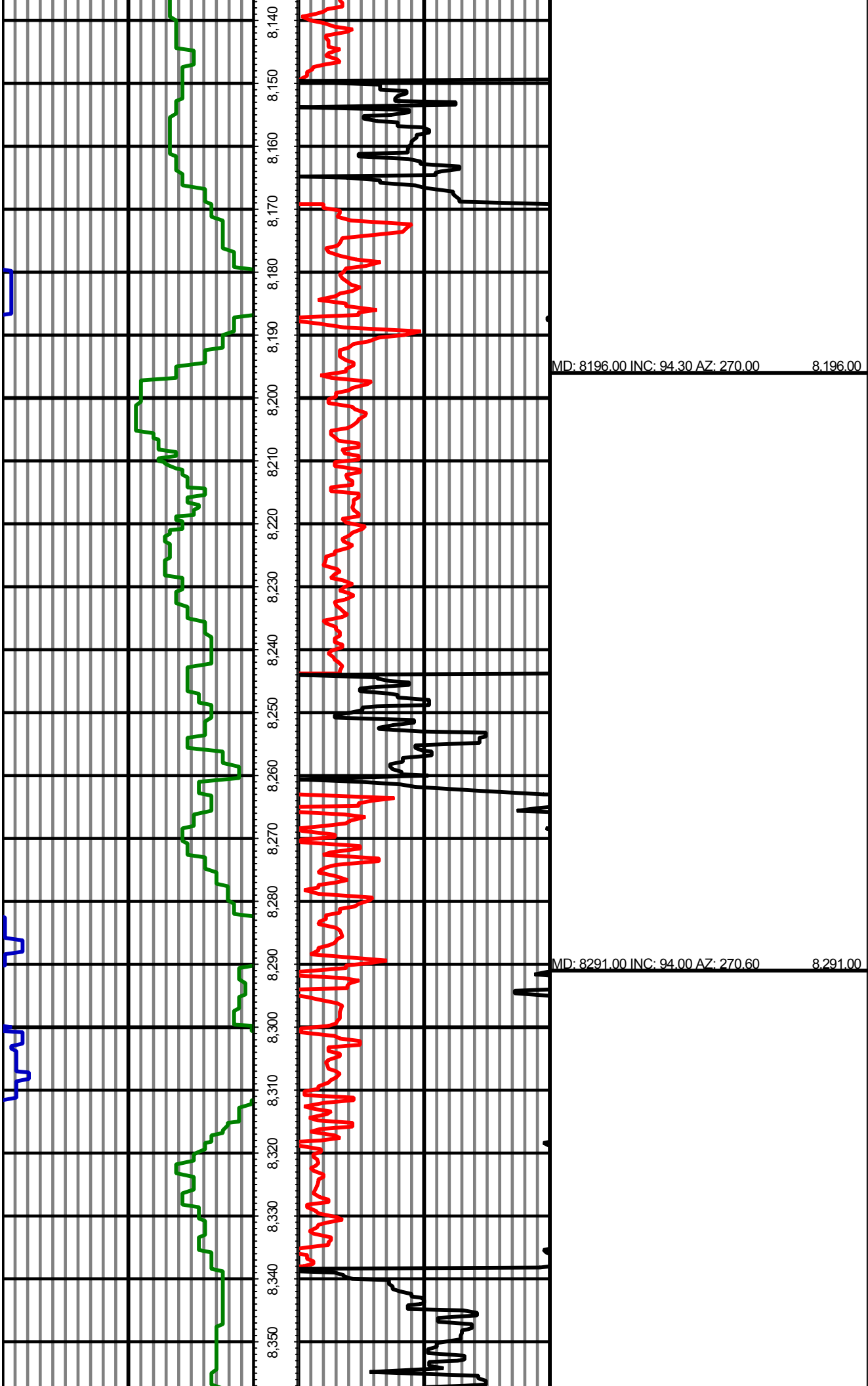
MD: 7817.00 INC: 93.50 AZ: 267.90 7,817.00

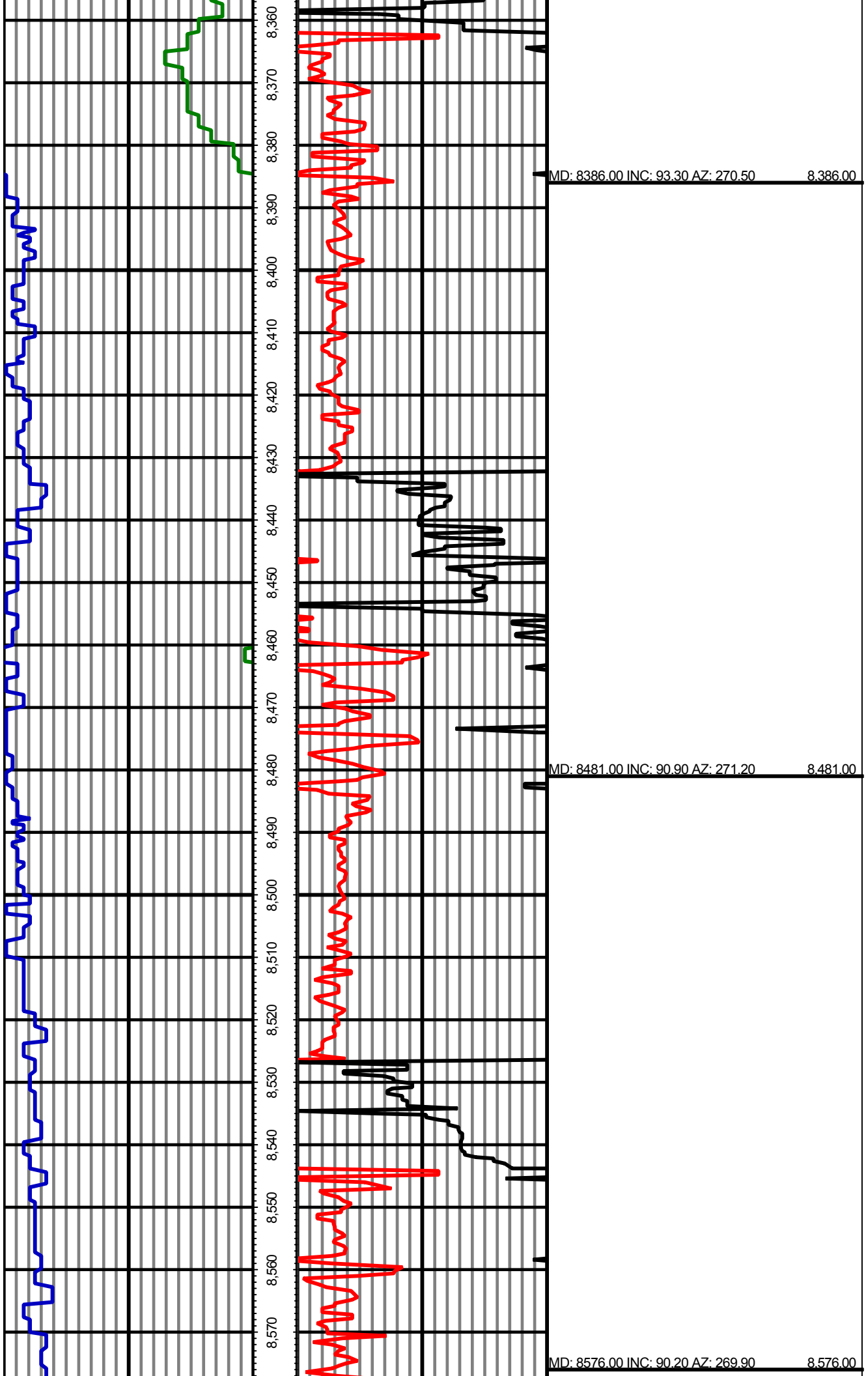
MD: 7912.00 INC: 93.00 AZ: 268.30 7,912.00

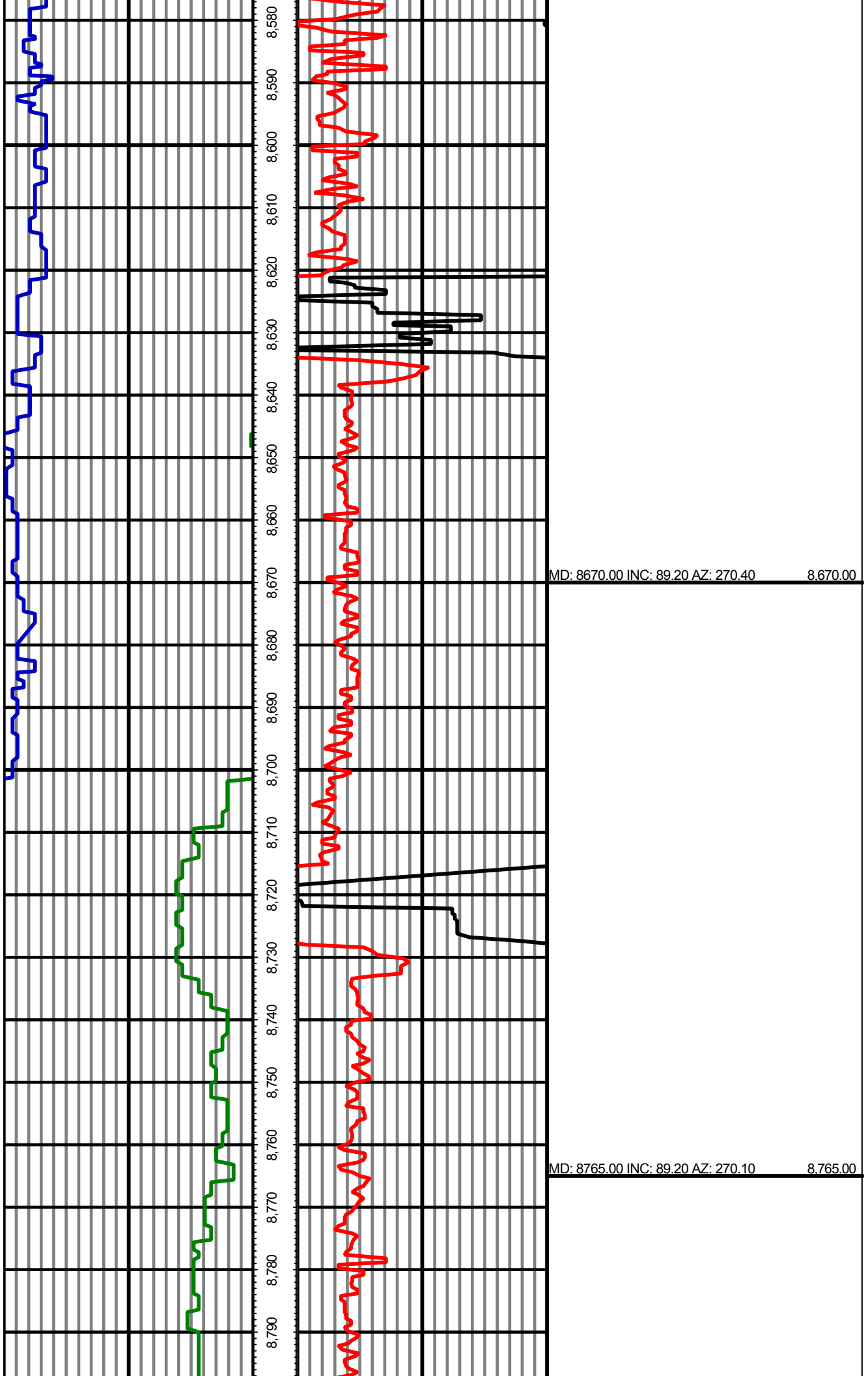


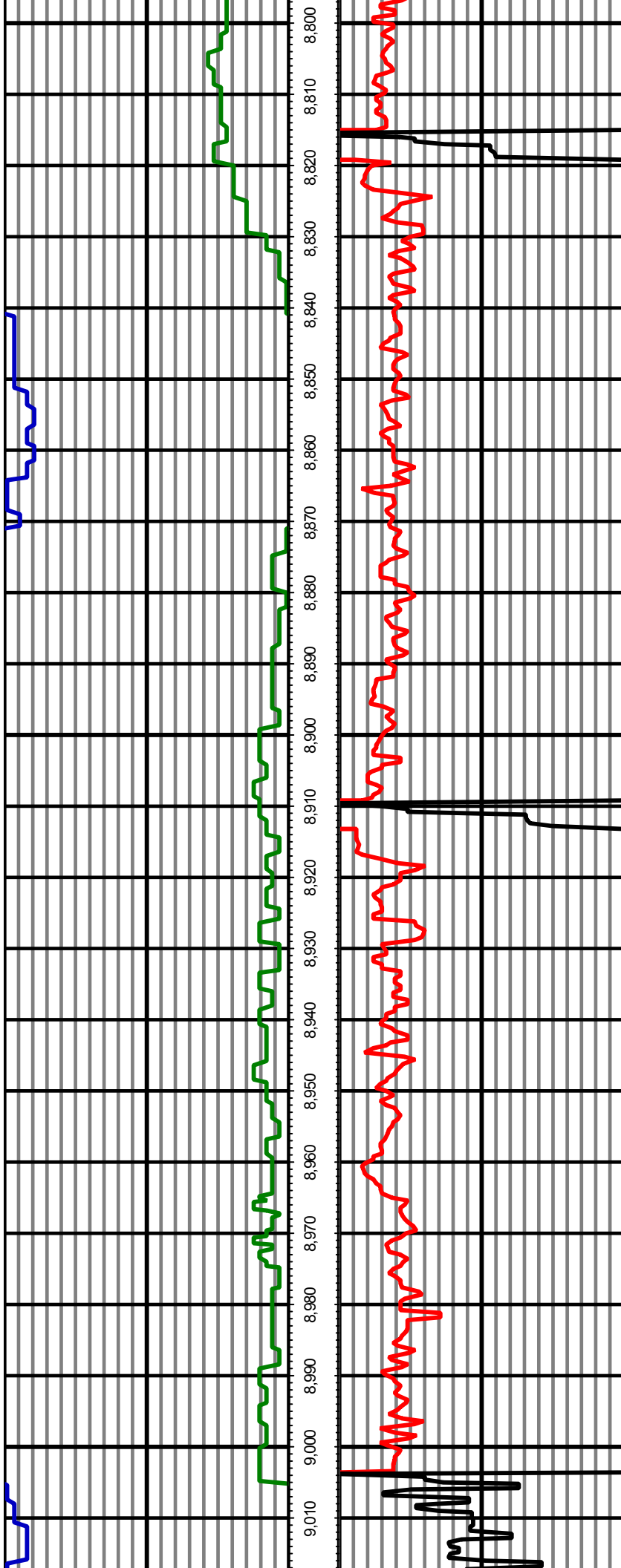
MD: 8007.00 INC: 92.70 AZ: 268.40 8,007.00

MD: 8102.00 INC: 93.90 AZ: 268.60 8,102.00







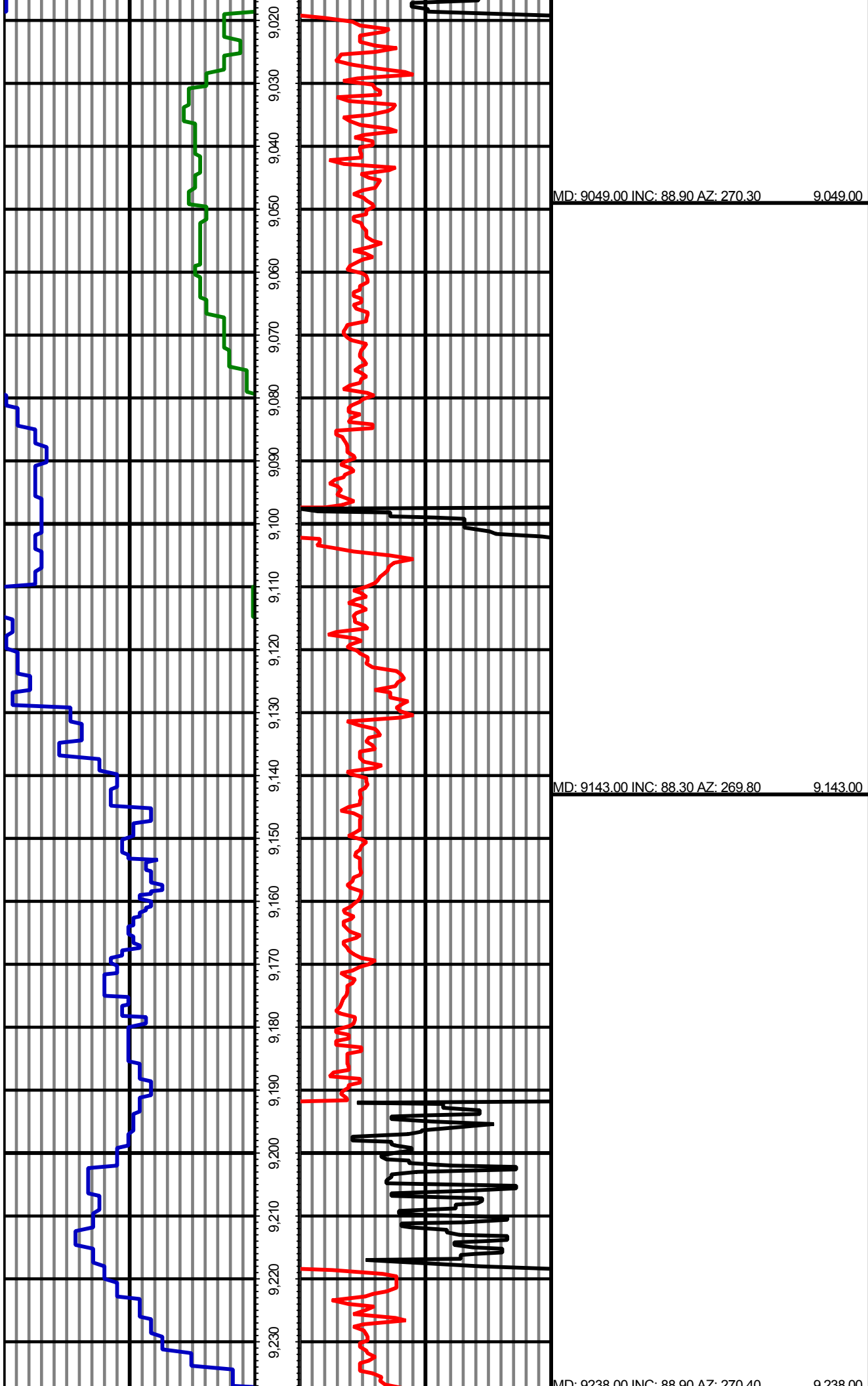


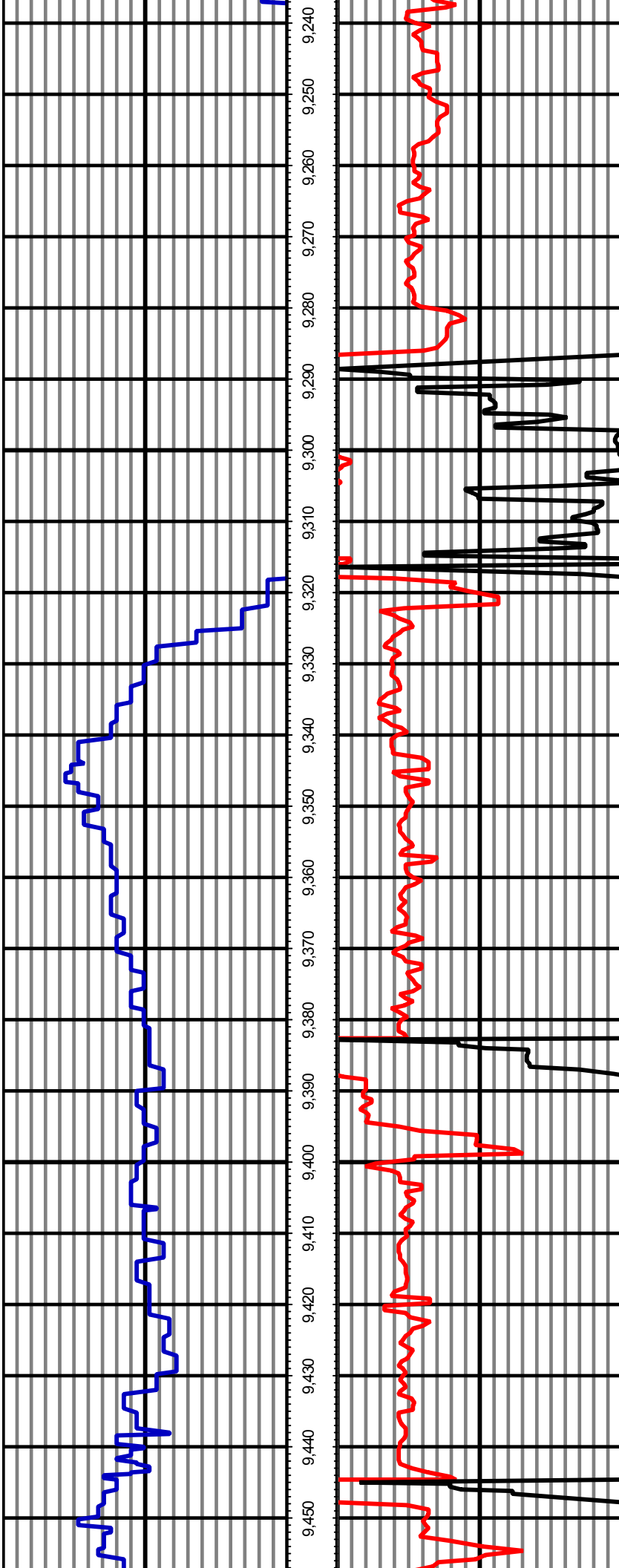
MD: 8859.00 INC: 89.20 AZ: 269.90

8,859.00

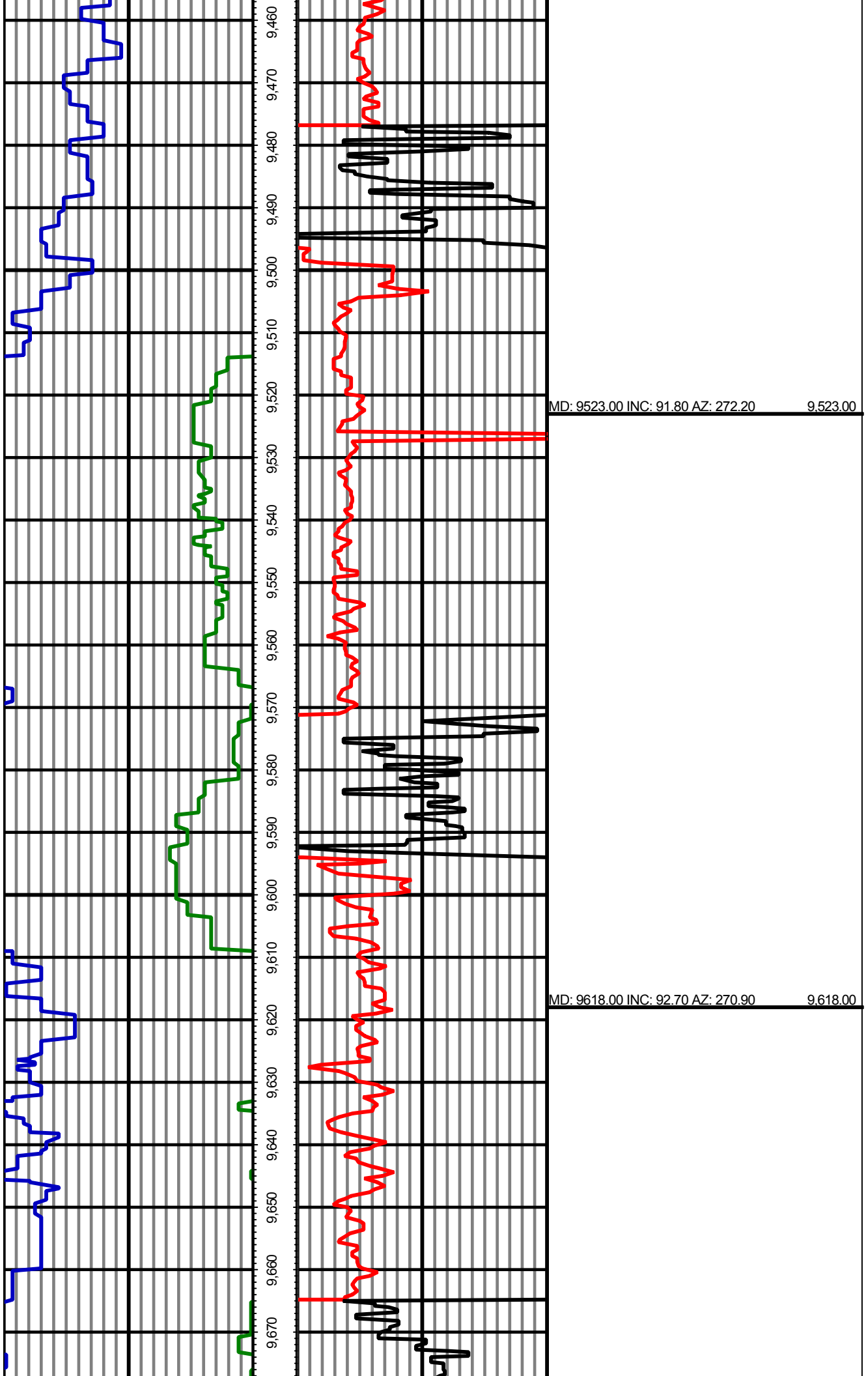
MD: 8954.00 INC: 90.50 AZ: 269.90

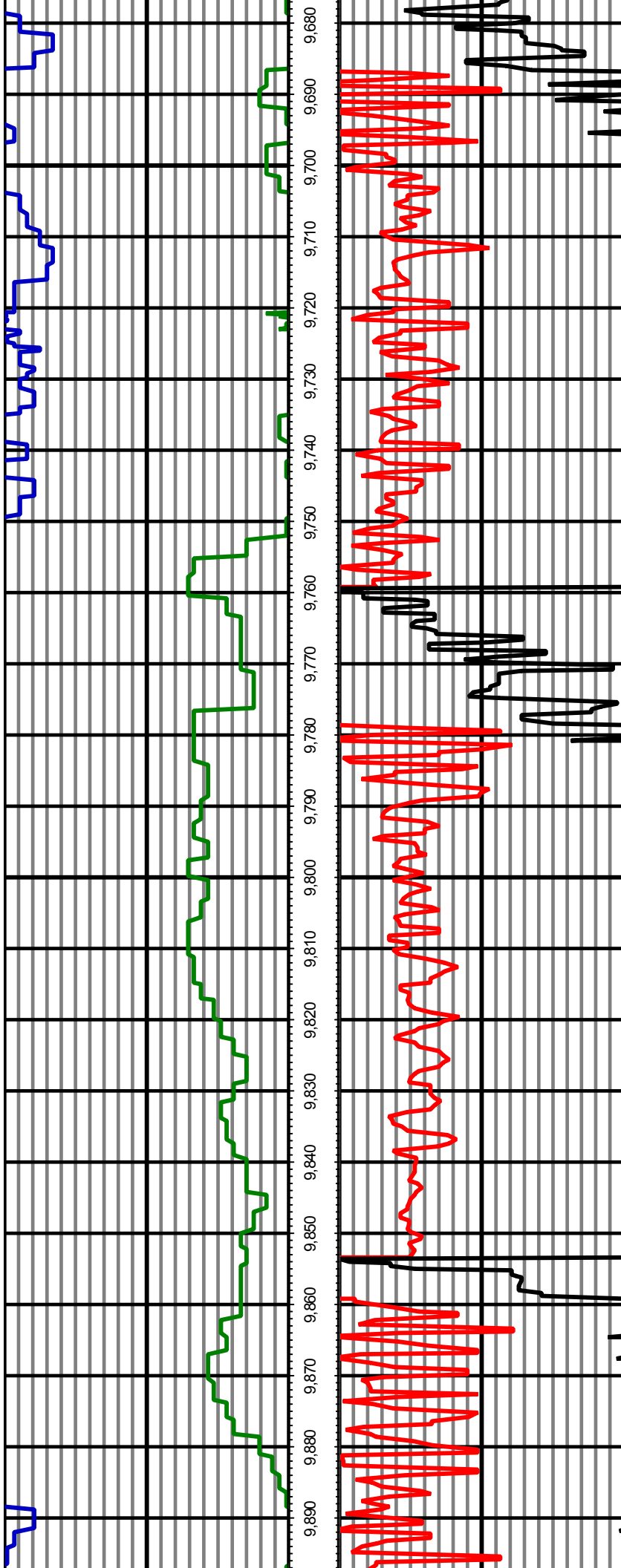
8,954.00





MD: 9238.00 INC: 88.90 AZ: 270.40		9,238.00
MD: 9333.00 INC: 91.60 AZ: 273.30		9,333.00
MD: 9427.00 INC: 92.60 AZ: 272.90		9,427.00





MD: 9712.00 INC: 91.90 AZ: 269.40 9,712.00

MD: 9807.00 INC: 88.40 AZ: 269.00 9,807.00

