



Cathedral Energy

**145041**

5":100' - TVD

2/5/2014 8:15:07 AM

**Oper. Company:** Encana  
**Country:** USA  
**State / Province:** Colorado  
**County / Parish:** Weld

**API/UWI:** 051233620800  
**Field:** DJ Basin  
**Well:** Liberty 2C-21H  
**Rig:** Ensign 135

**Personnel**

**Day Hand:** John Corby  
**Night Hand:** Brett Gianino

**Location**

**Latitude:** 40.215230  
**Longitude:** -105.008780  
**Elev. GL:** 5023  
**Elev. DF:** 5036  
**Elev. KB:** 5036

**Hole Data**

Size	From	To
8.75	909	7535
6.125	7535	11691

**Casing Data**

Size	From	To
9.625	915	7525

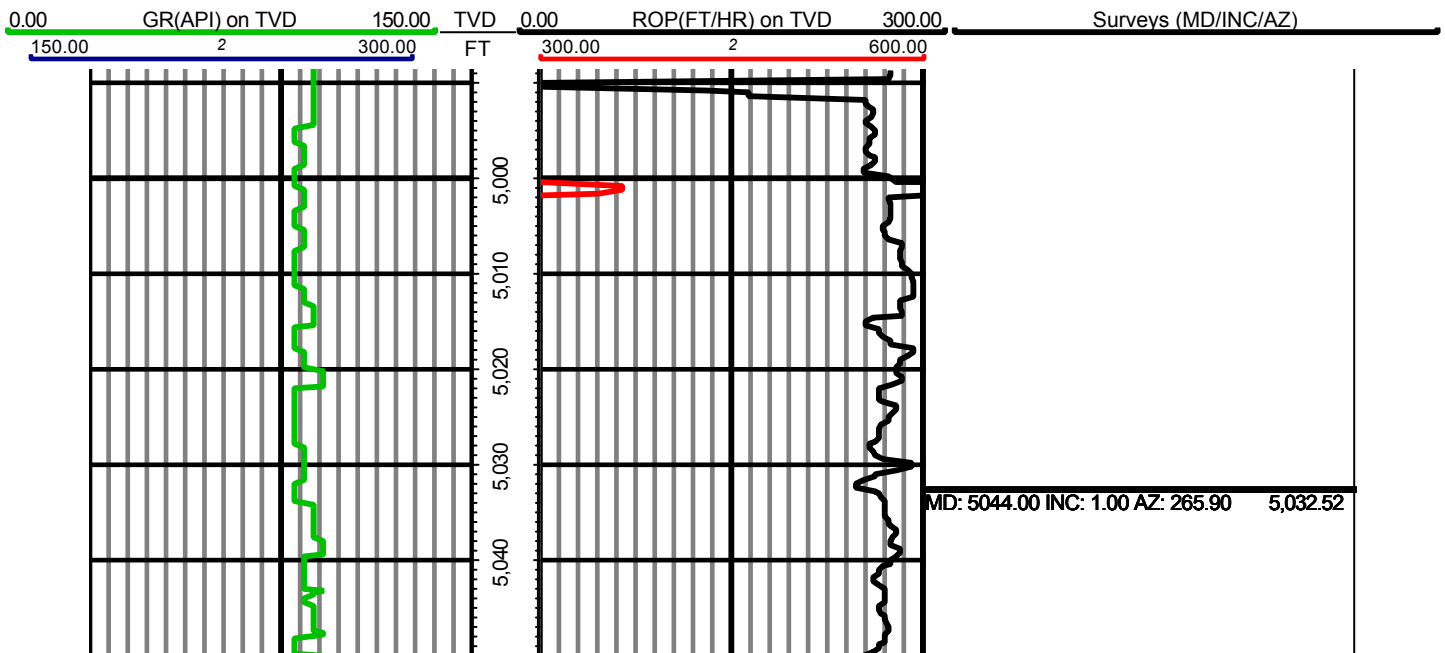
**Mud Data**

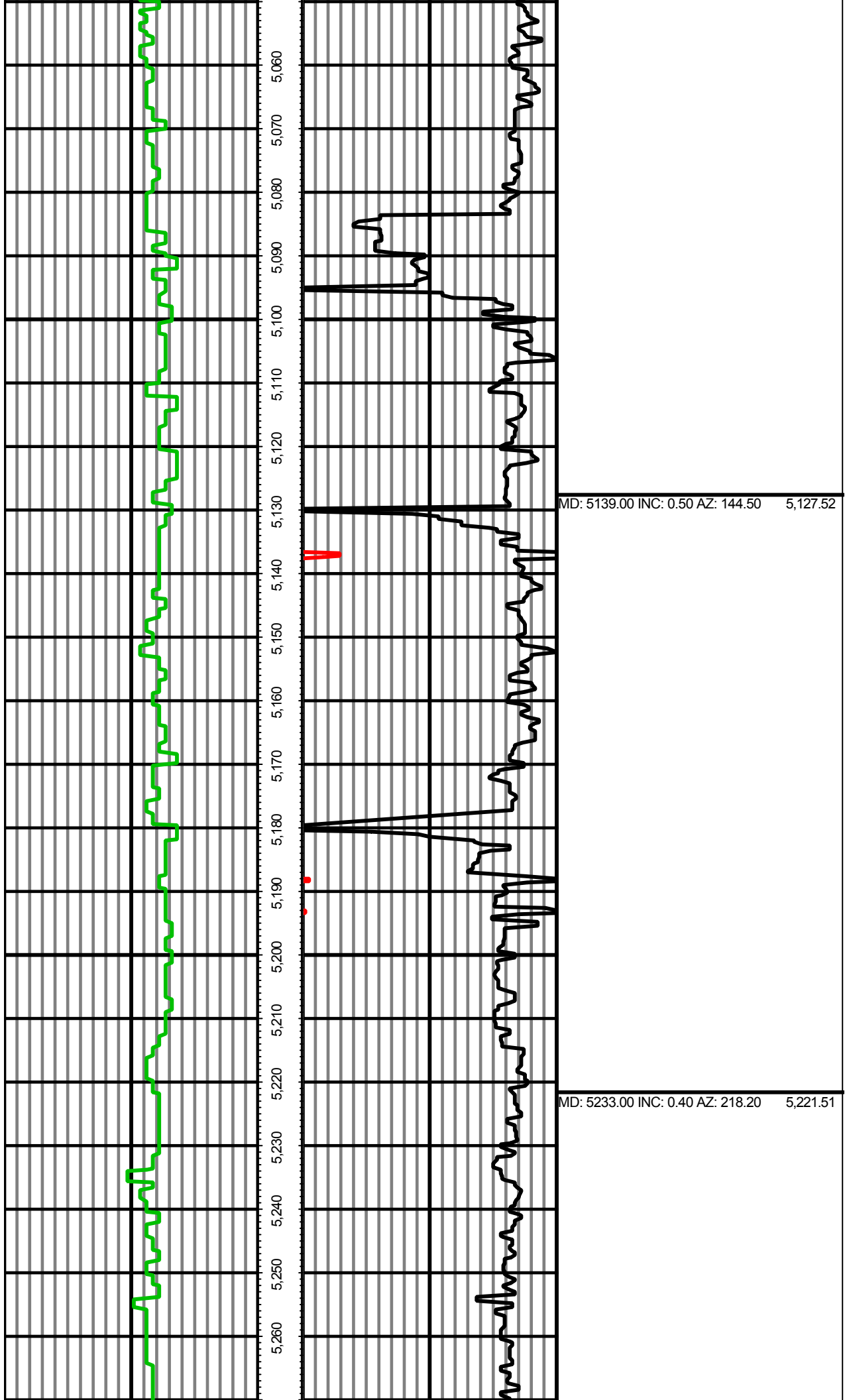
Weight	From	To
--------	------	----

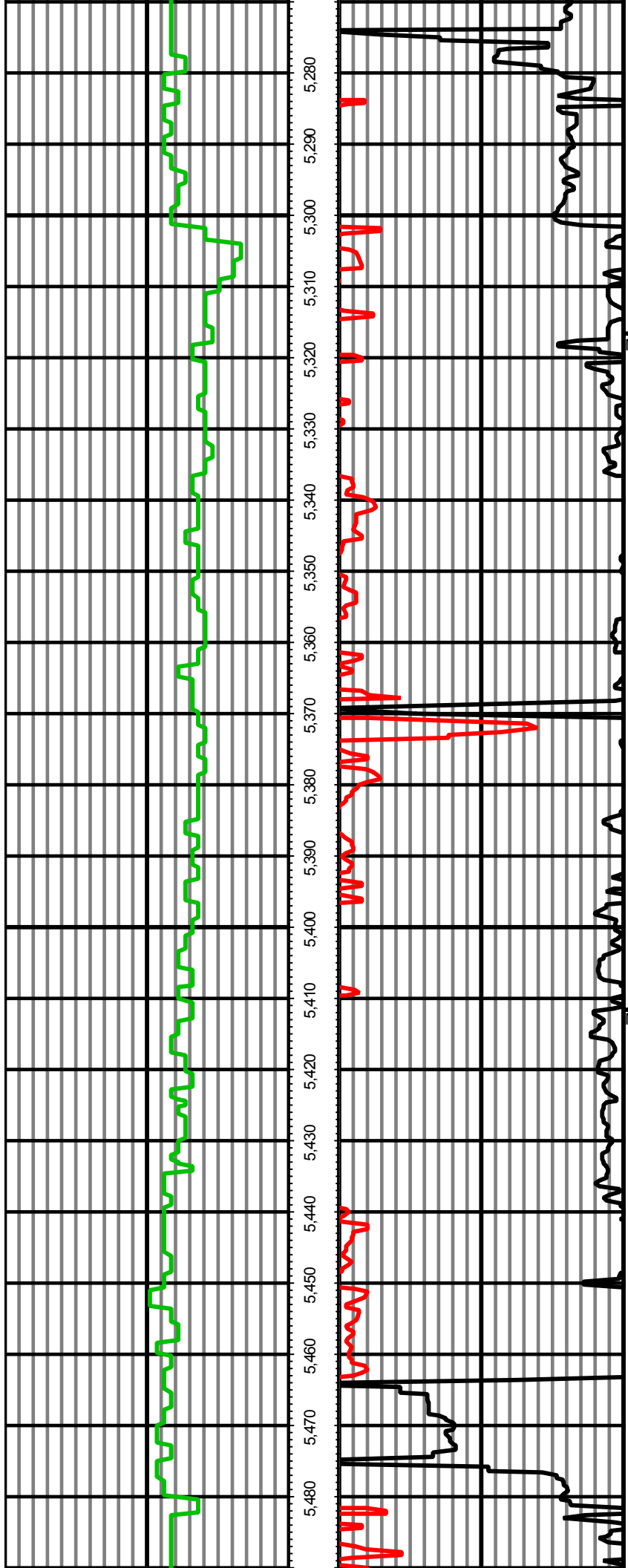
**Tool Run Data**

Serial Number	Gamma Offset	Resist. Offset	Start Time	Start Depth	End Time	End Depth
1289	40.2	0	1/30/2014 2:00:18 AM	909	2/1/2014 5:30:18 PM	7535
1289	38.45	0	2/3/2014 3:00:37 AM	7535	2/5/2014 9:00:37 PM	11691

*All interpretations are opinions based on inferences from electrical or other measurements and we cannot and do not guarantee the accuracy or correctness of any interpretation, and we shall not except in the case of gross or willful negligence on our part, be liable or responsible for any loss, cost damages or expenses incurred or sustained by anyone resulting from an interpretation made by any of our officers, agents, or employees.*







MD: 5328.00 INC: 0.90 AZ: 240.20 5,316.51

MD: 5423.00 INC: 1.80 AZ: 261.80 5,411.48

