



Cathedral Energy

145041

5":100' - MD

2/5/2014 8:09:45 AM

Oper. Company: Encana
Country: USA
State / Province: Colorado
County / Parish: Weld

API/UWI: 051233620800
Field: DJ Basin
Well: Liberty 2C-21H
Rig: Ensign 135

Personnel

Day Hand: John Corby
Night Hand: Brett Gianino

Location

Latitude: 40.215230
Longitude: -105.008780
Elev. GL: 5023
Elev. DF: 5036
Elev. KB: 5036

Hole Data

Size	From	To
8.75	909	7535
6.125	7535	11691

Casing Data

Size	From	To
9.625	915	7525

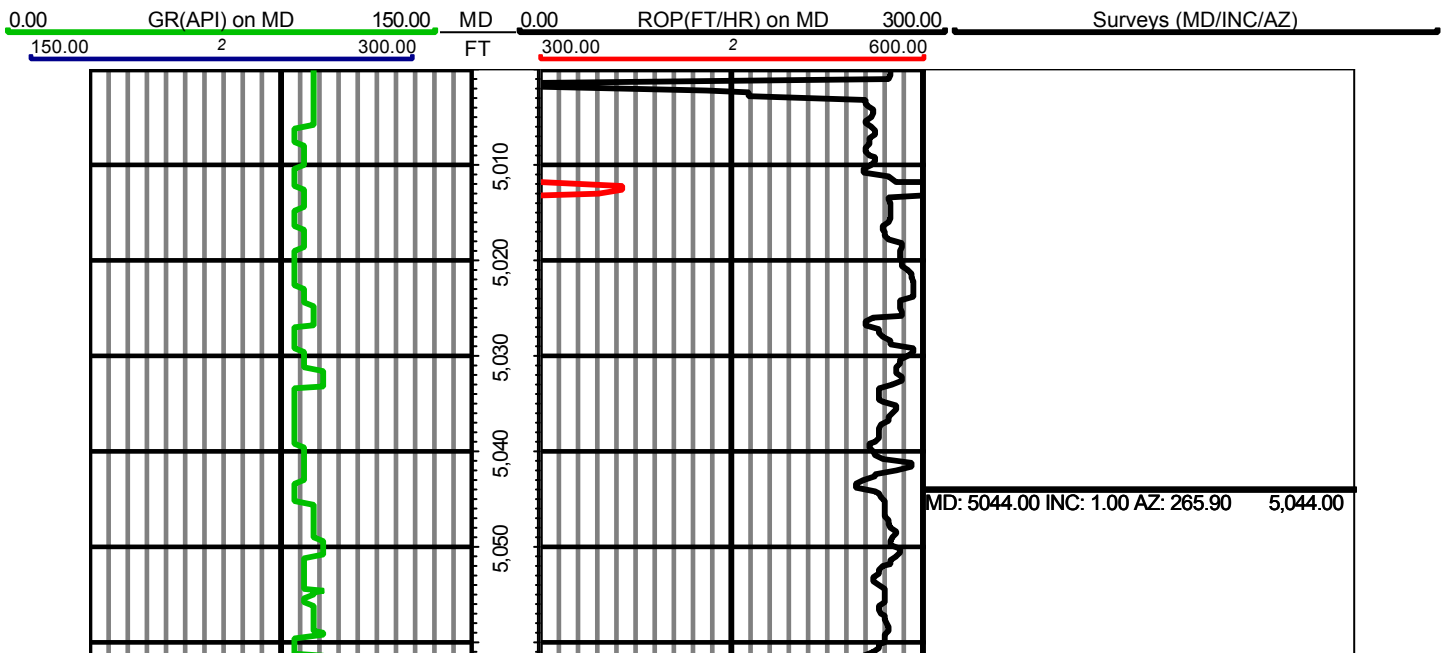
Mud Data

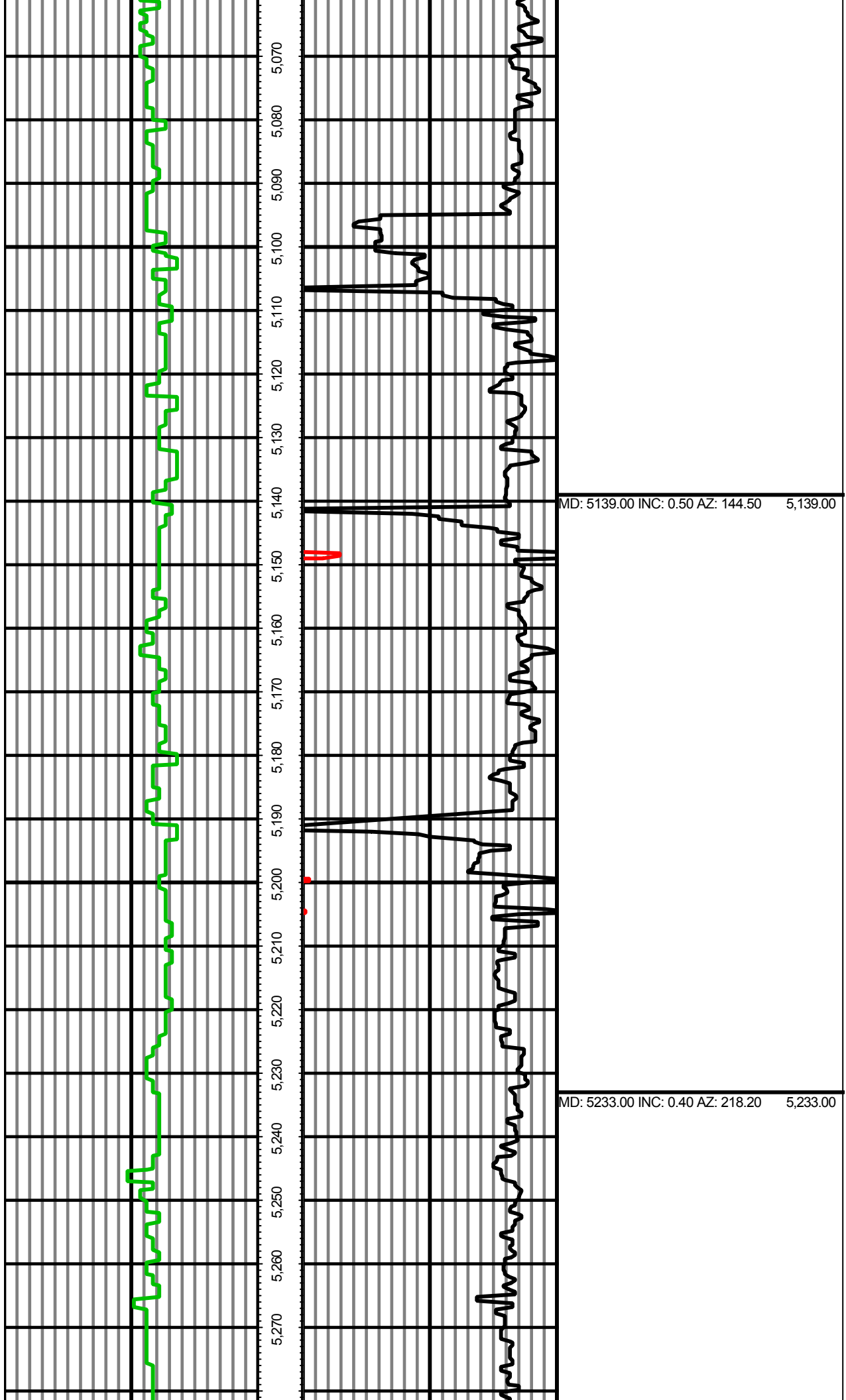
Weight	From	To
--------	------	----

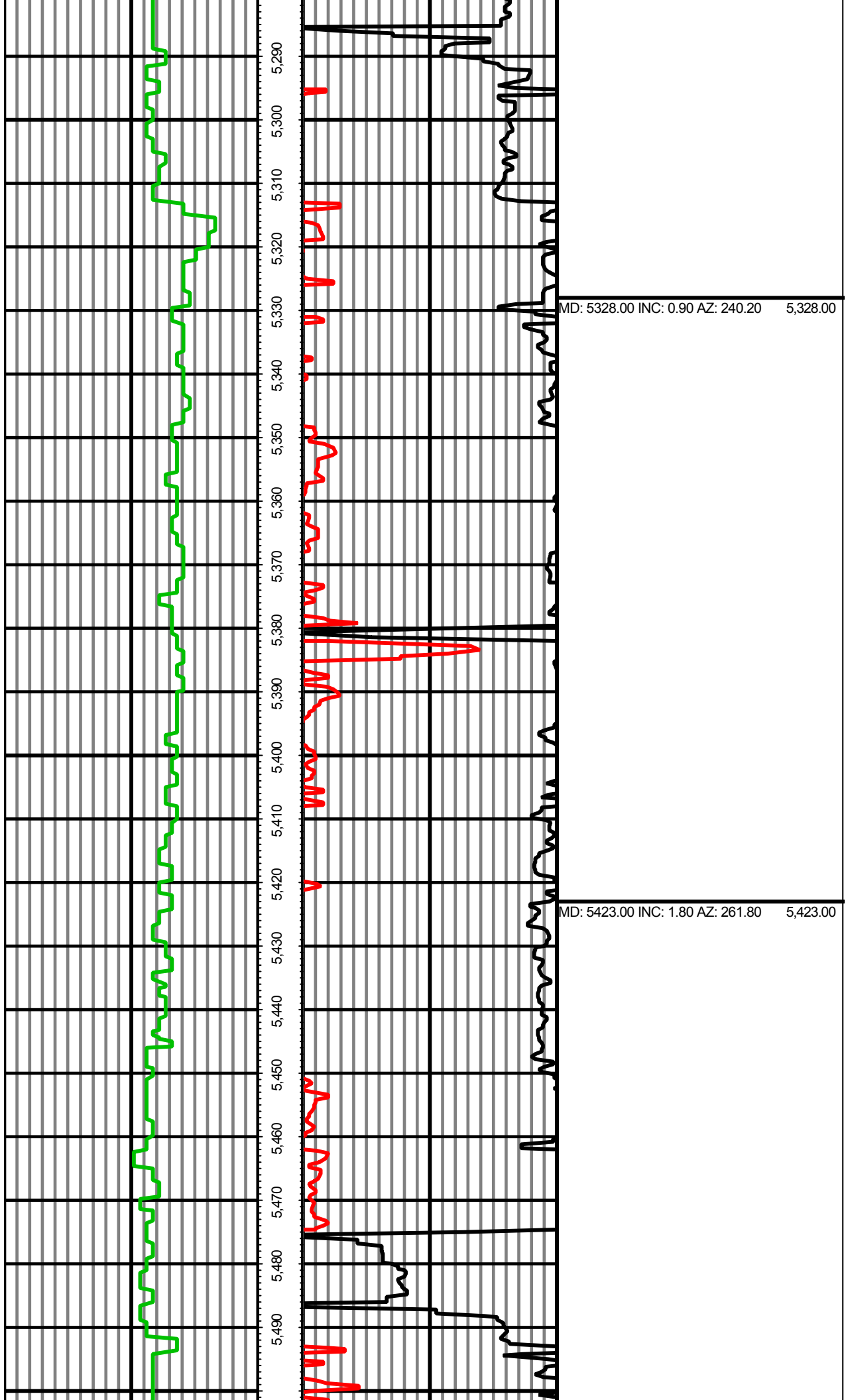
Tool Run Data

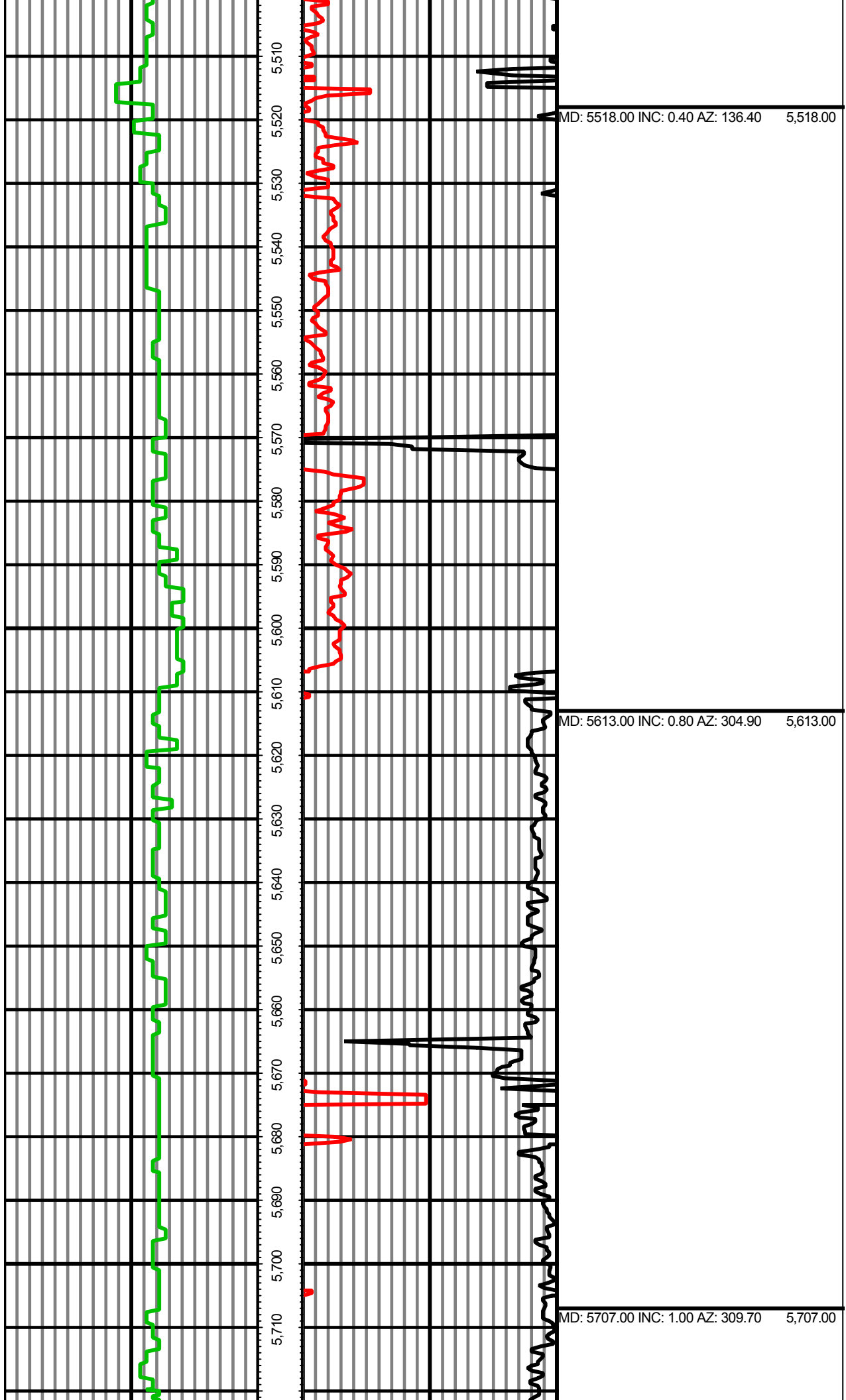
Serial Number	Gamma Offset	Resist. Offset	Start Time	Start Depth	End Time	End Depth
1289	40.2	0	1/30/2014 2:00:18 AM	909	2/1/2014 5:30:18 PM	7535
1289	38.45	0	2/3/2014 3:00:37 AM	7535	2/5/2014 9:00:37 PM	11691

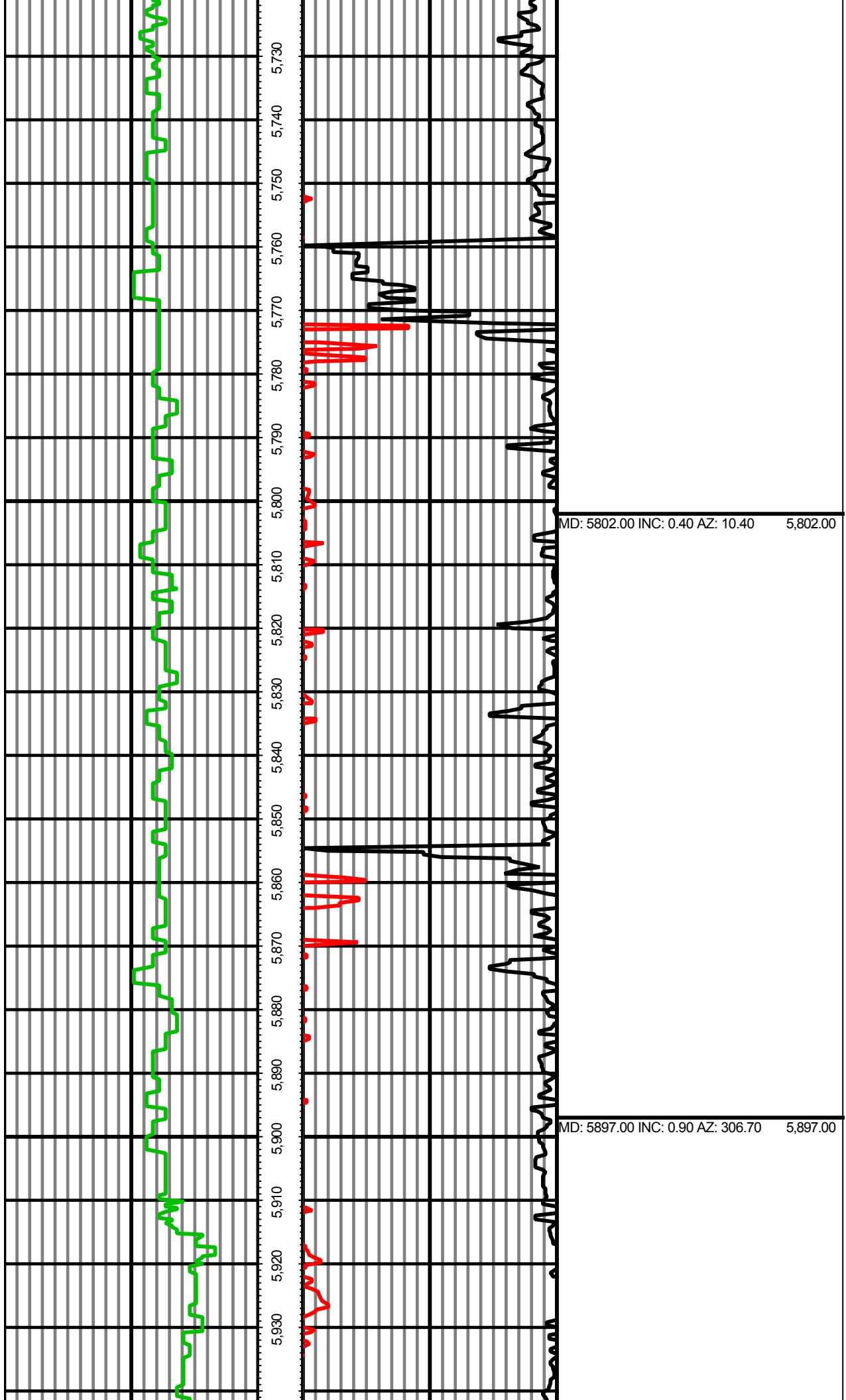
All interpretations are opinions based on inferences from electrical or other measurements and we cannot and do not guarantee the accuracy or correctness of any interpretation, and we shall not except in the case of gross or willful negligence on our part, be liable or responsible for any loss, cost damages or expenses incurred or sustained by anyone resulting from an interpretation made by any of our officers, agents, or employees.

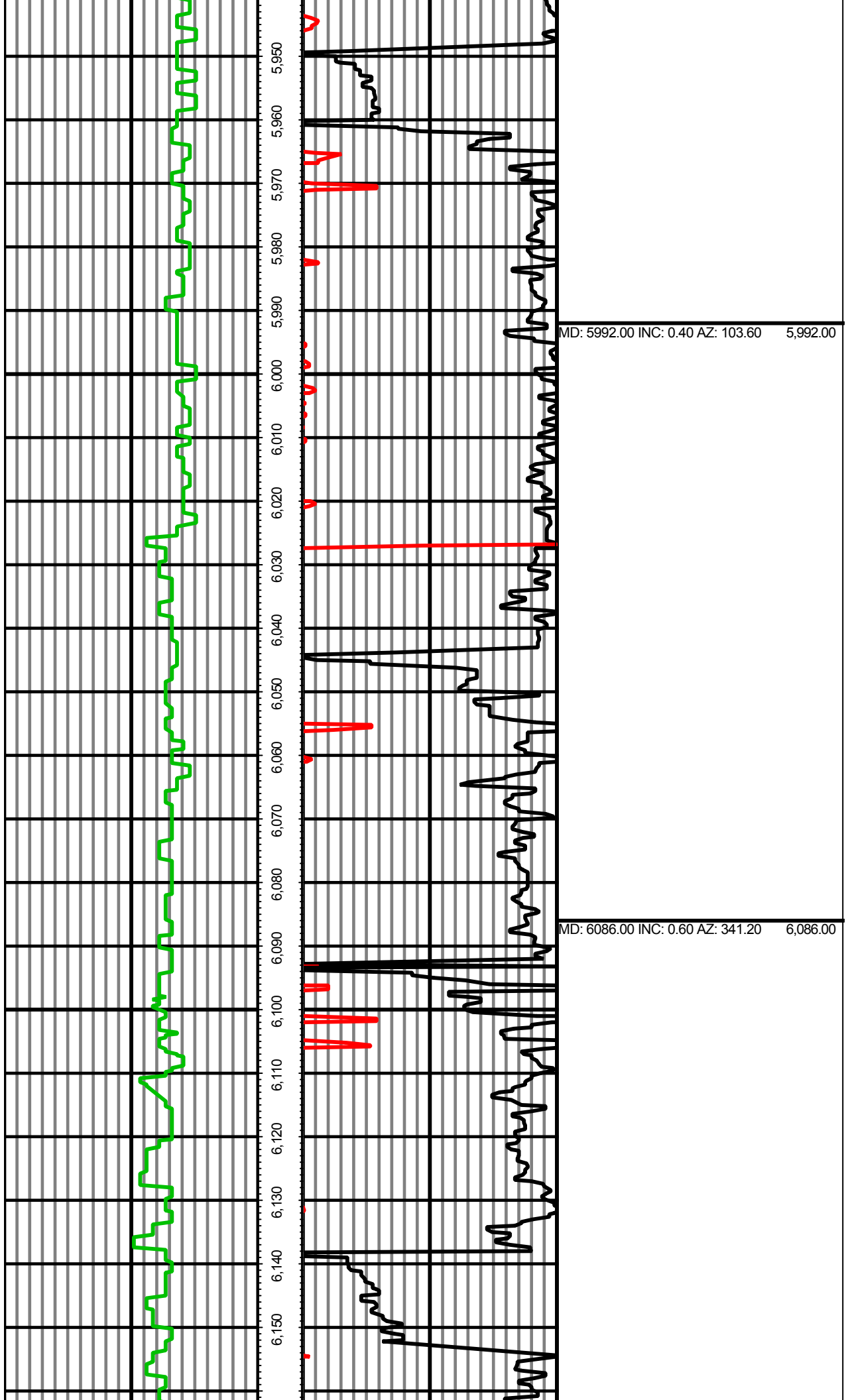


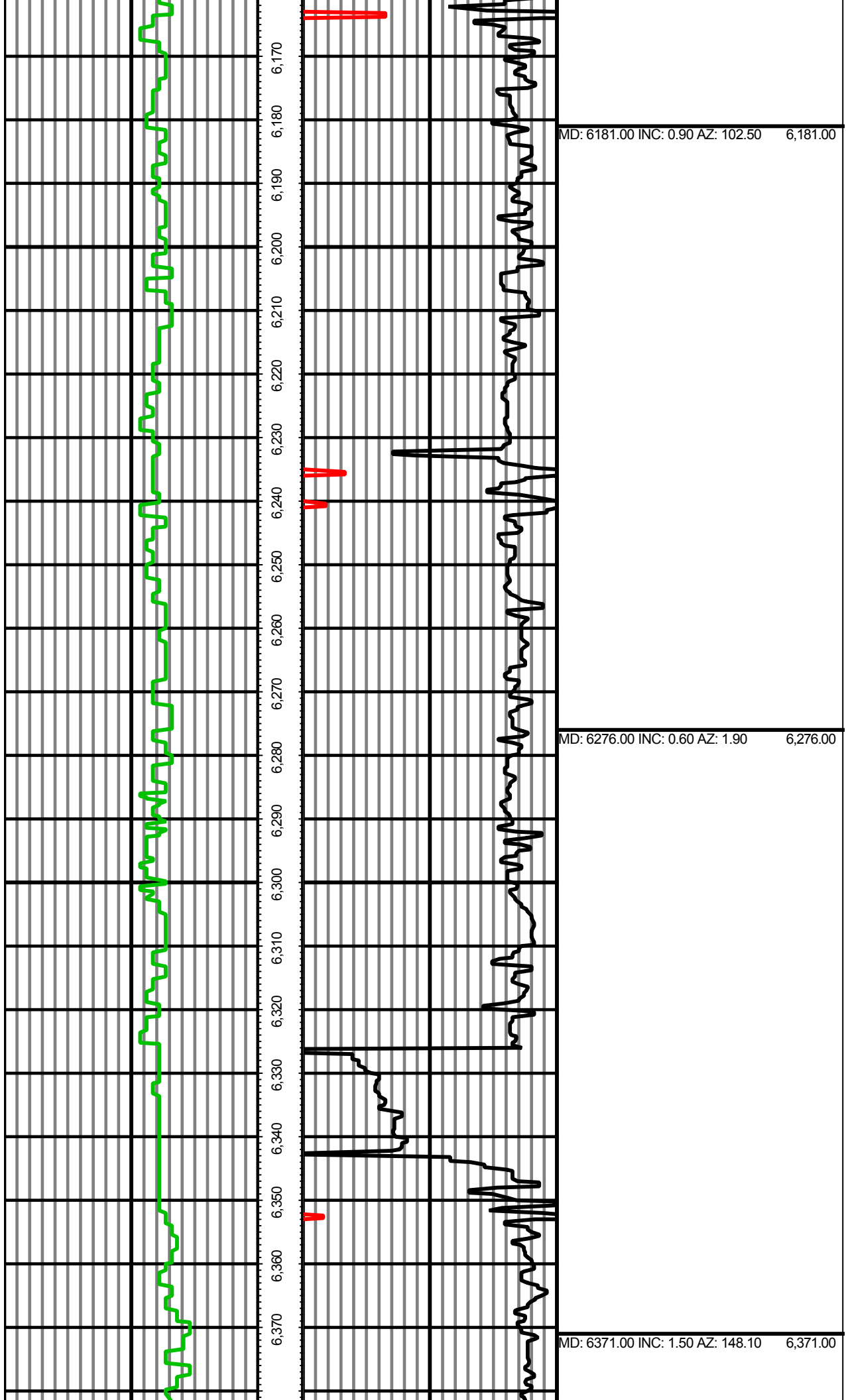


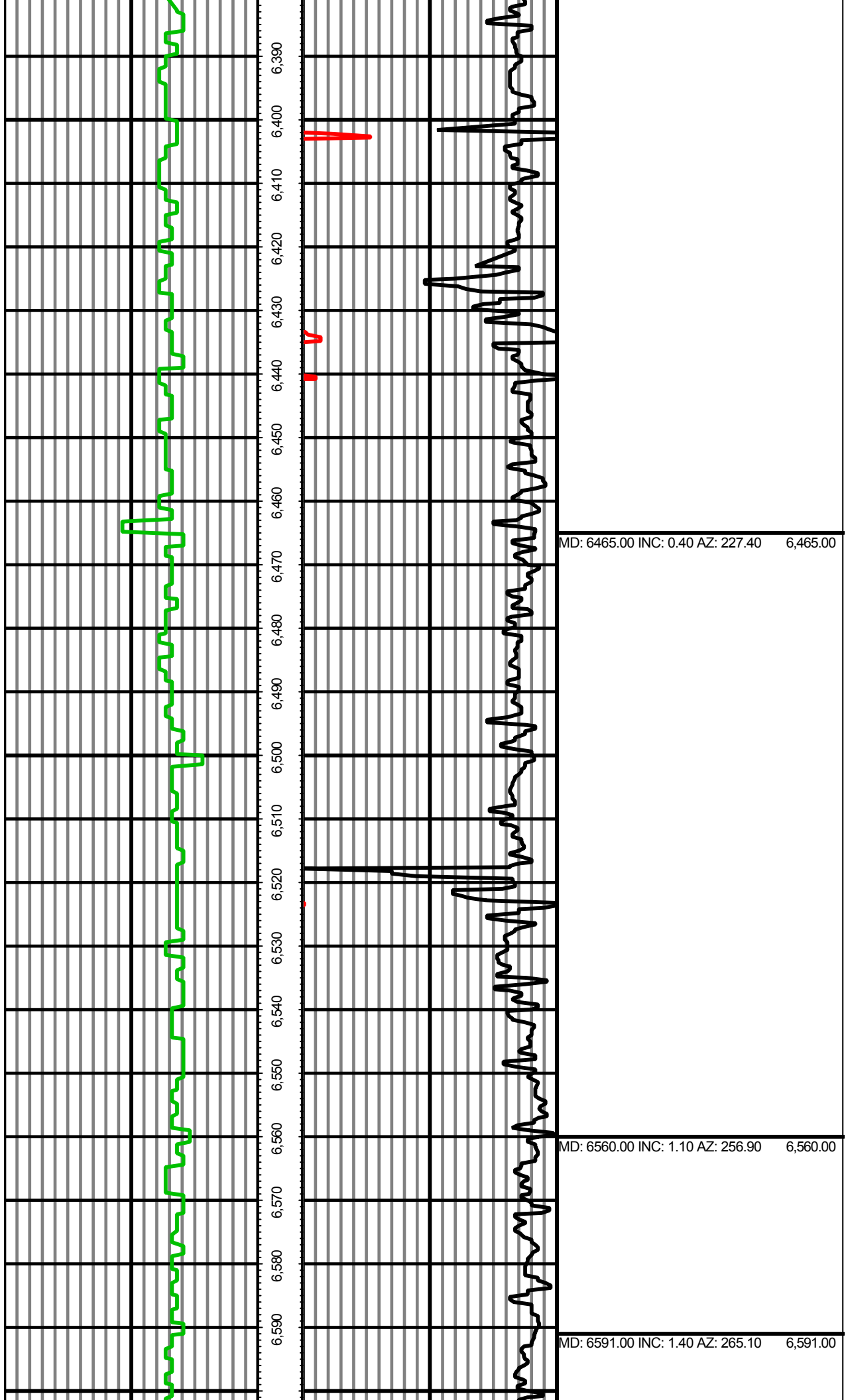


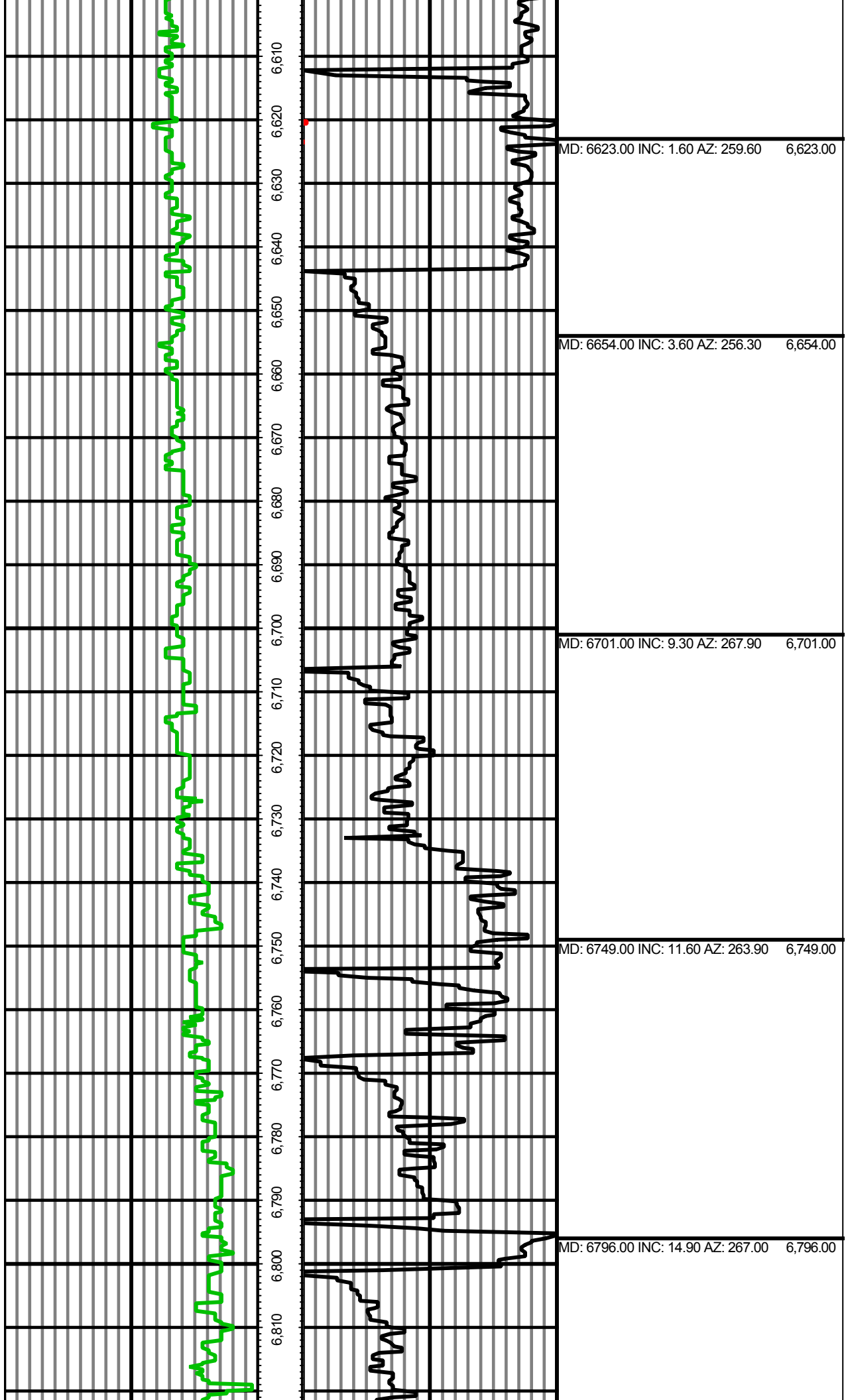


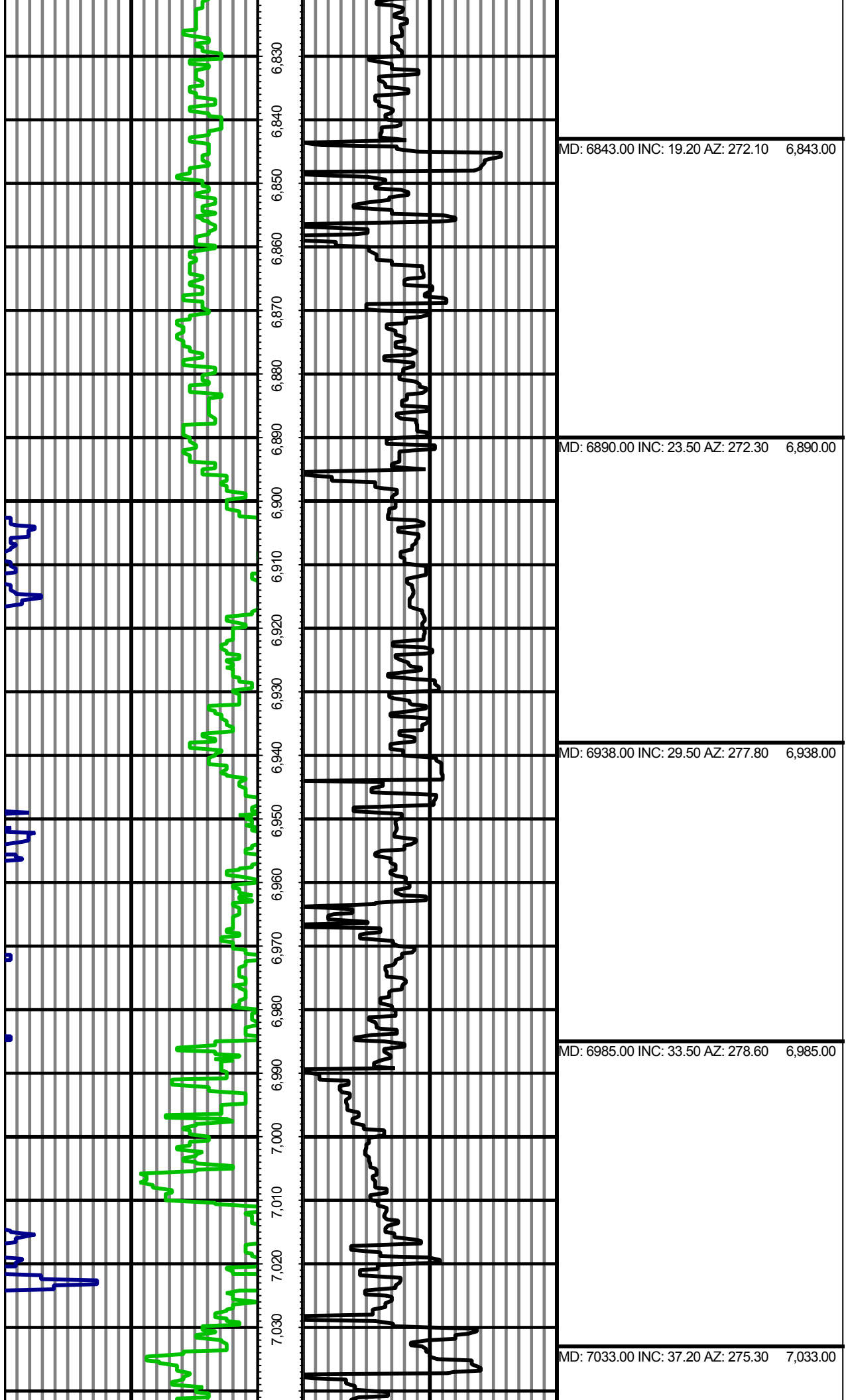


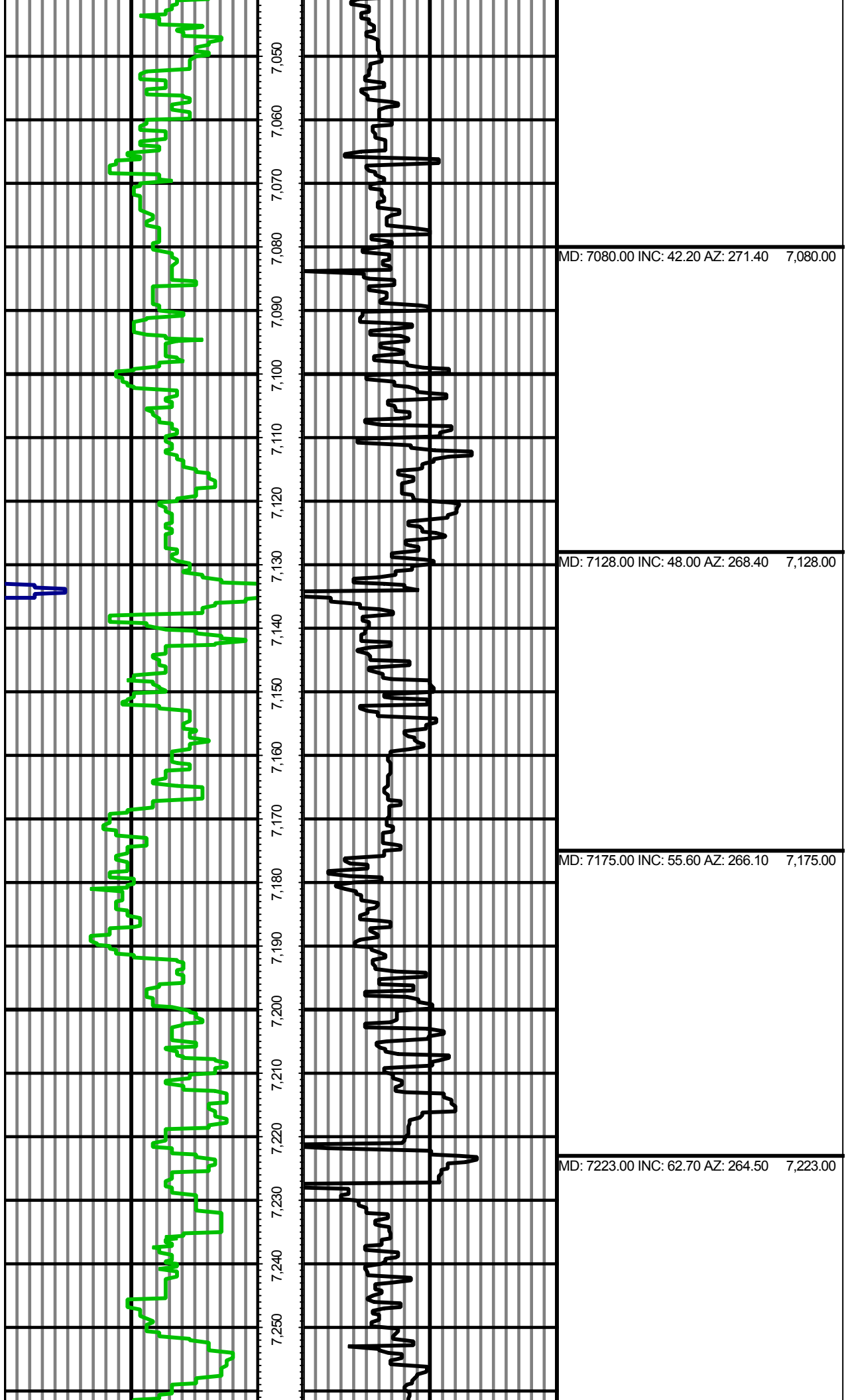


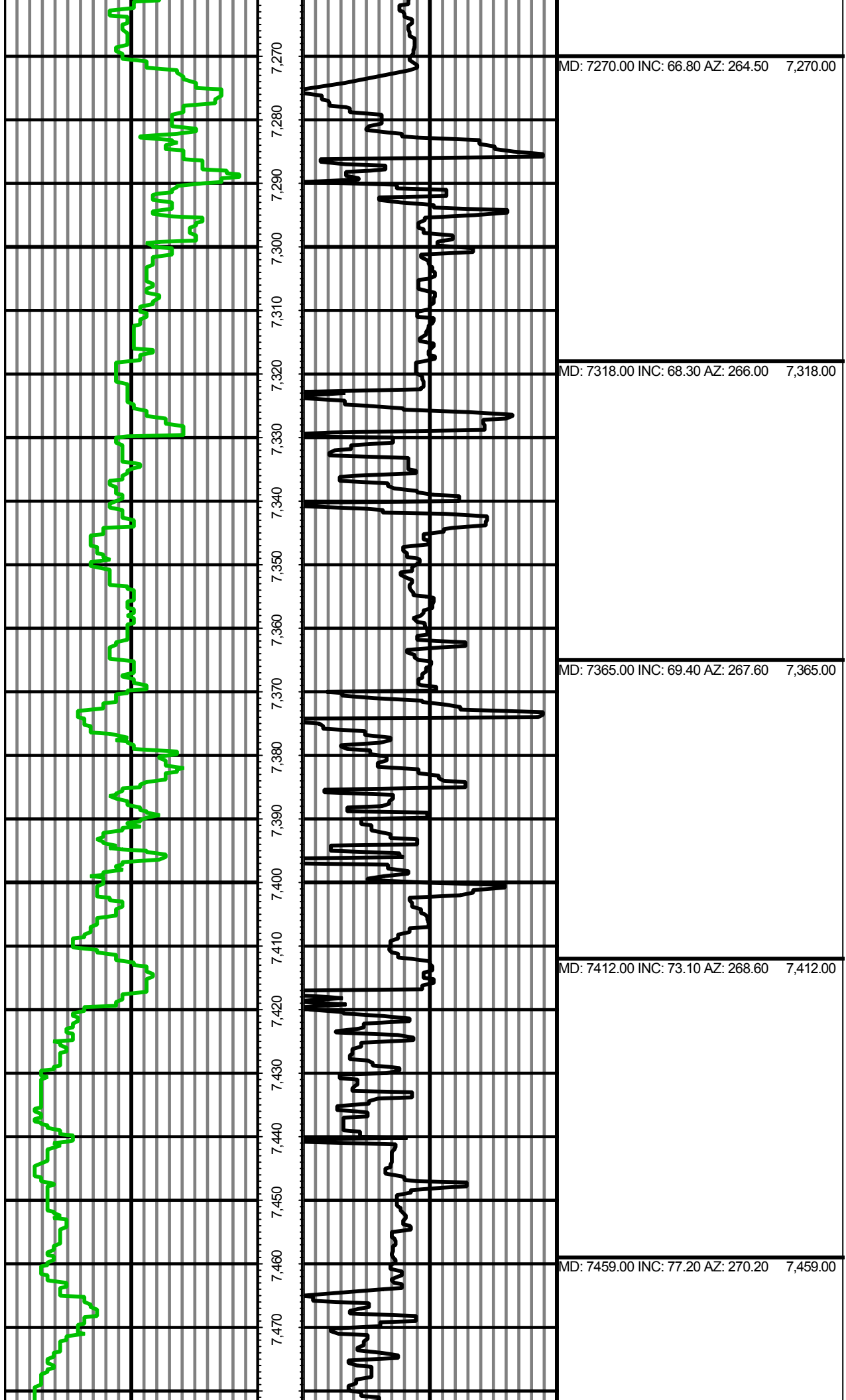


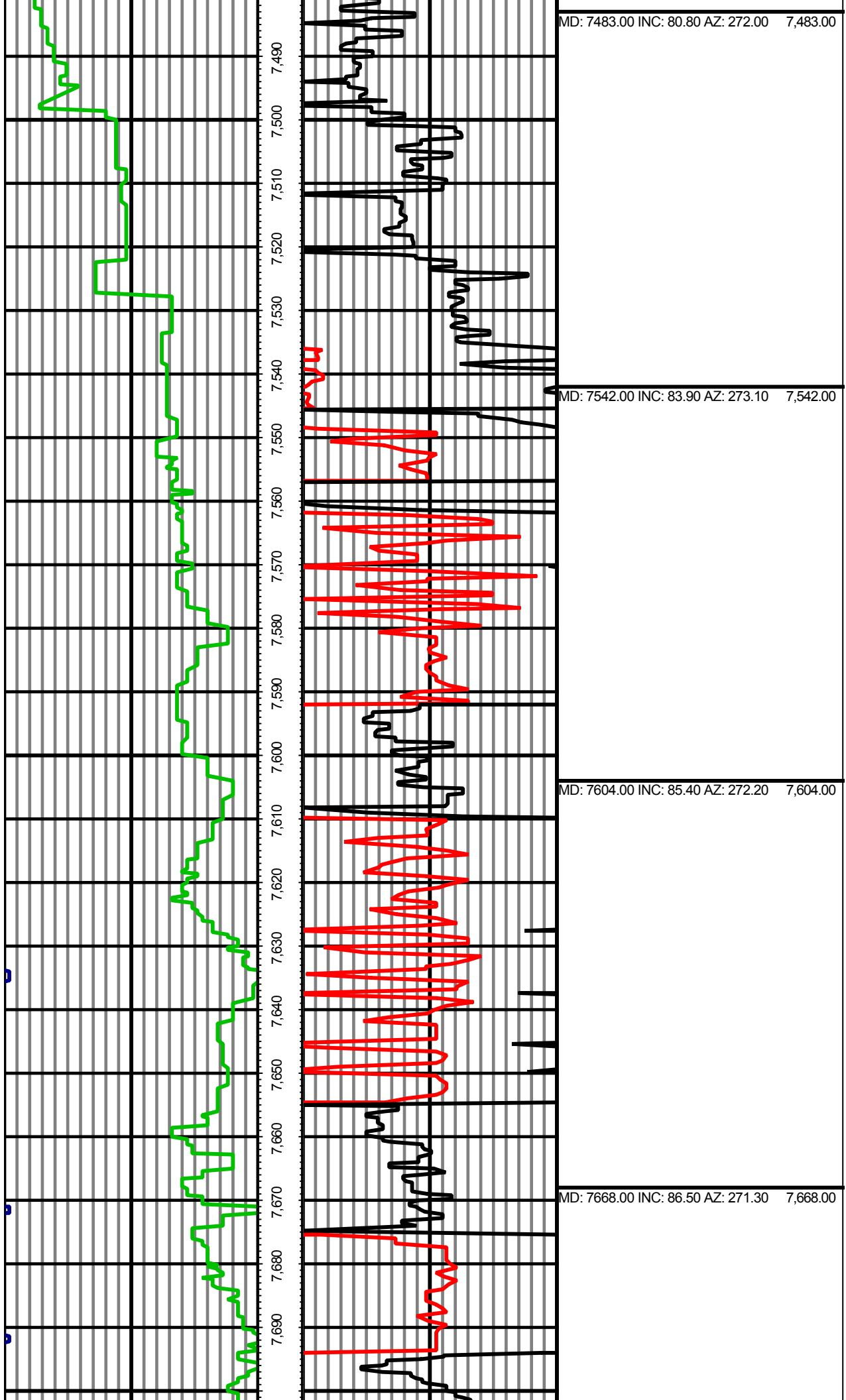


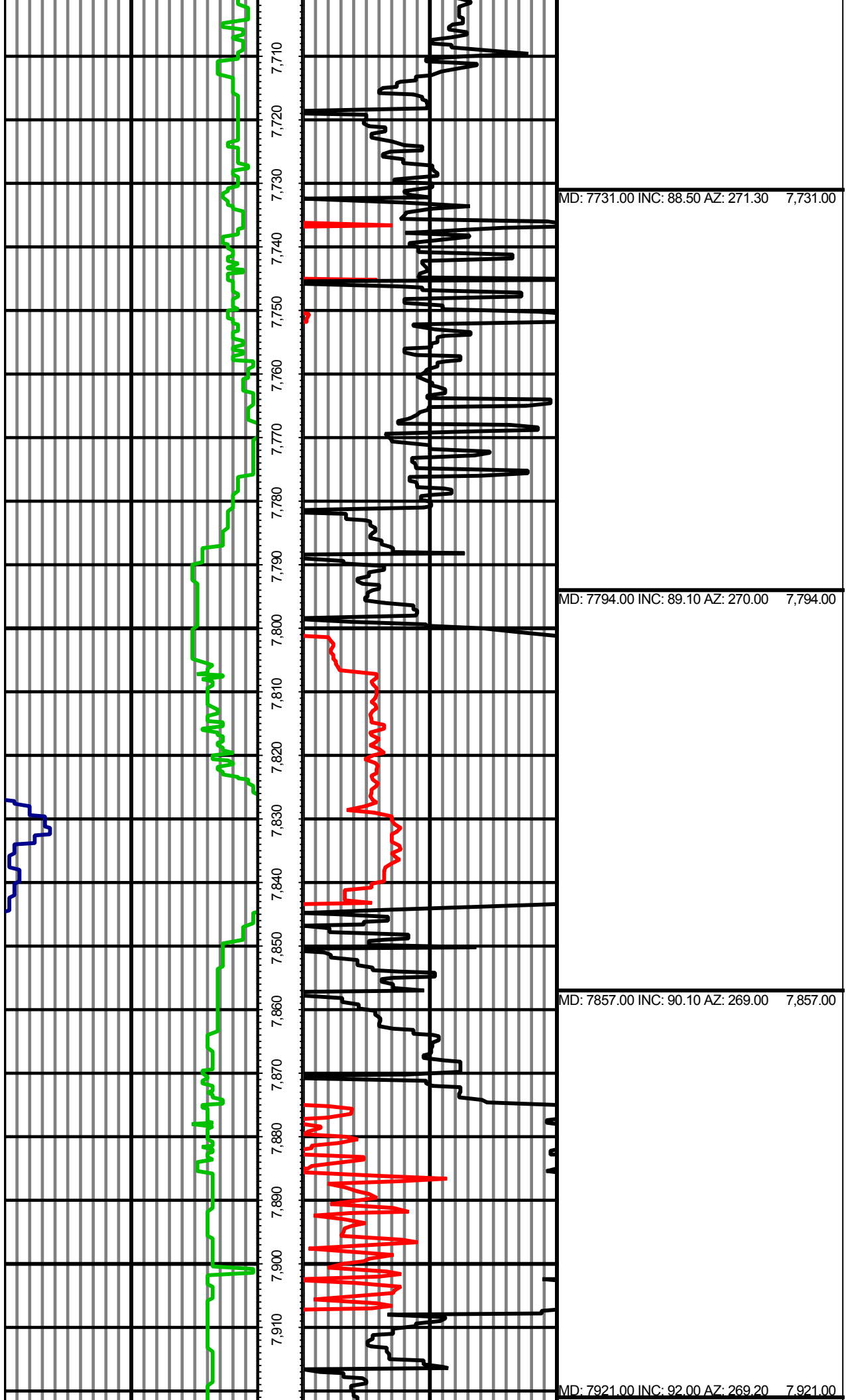


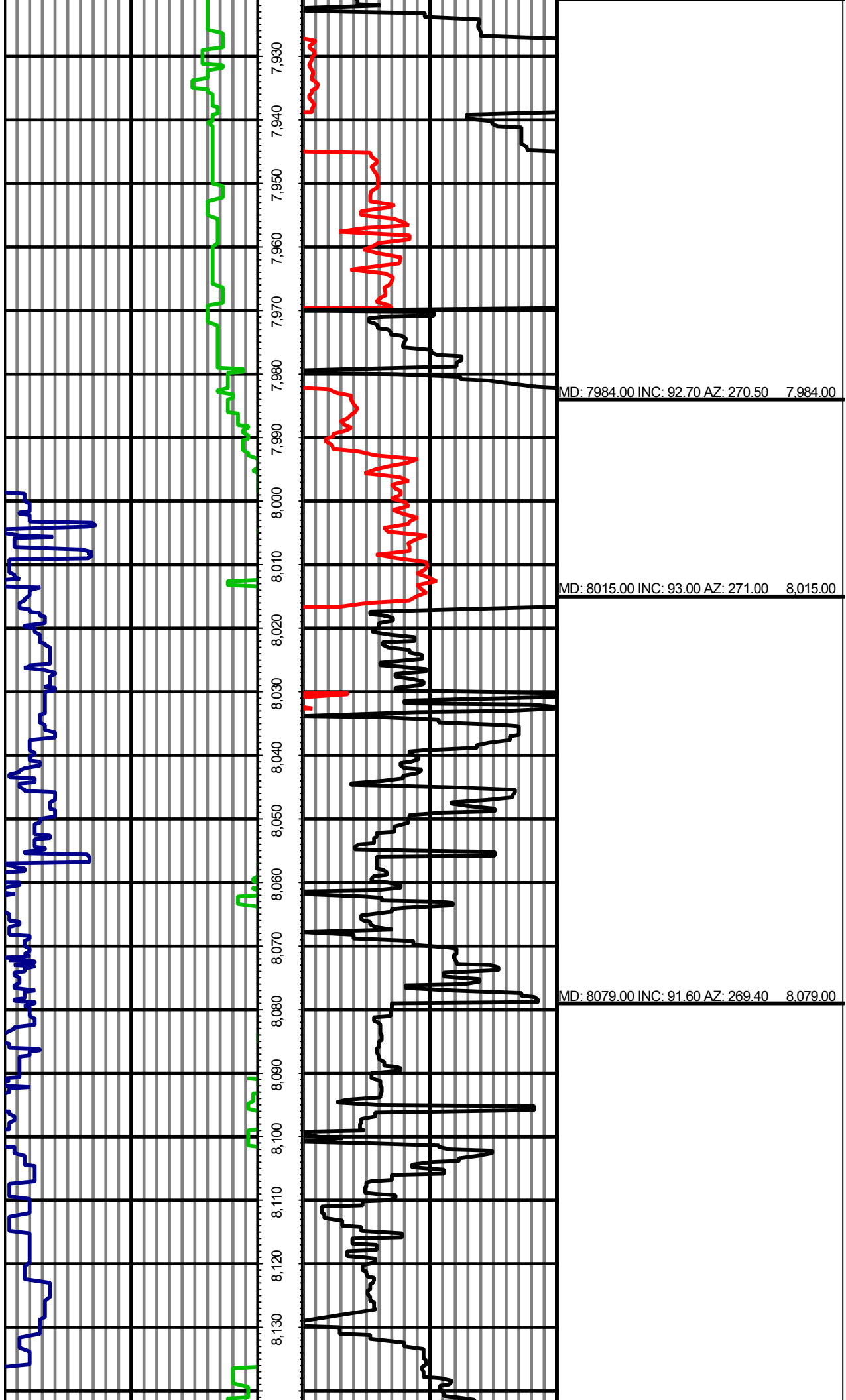


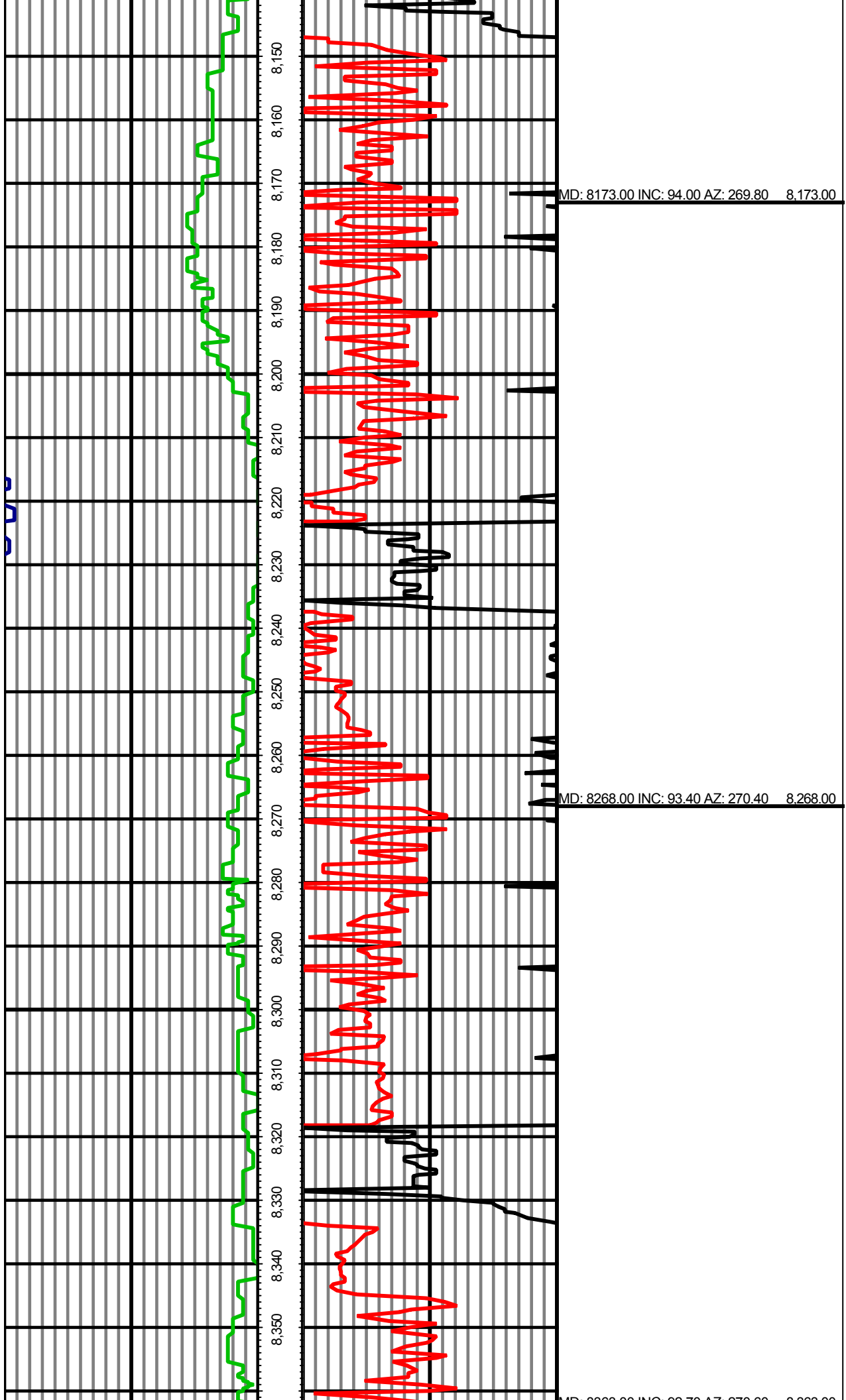


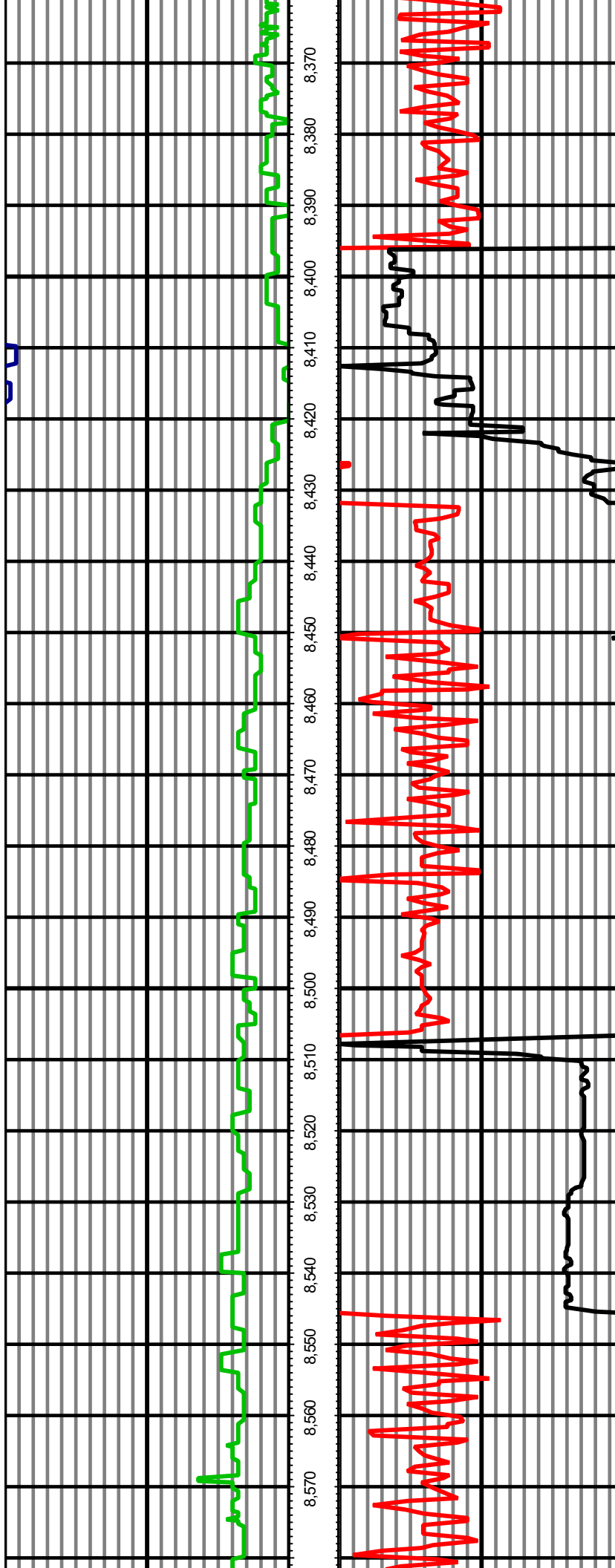




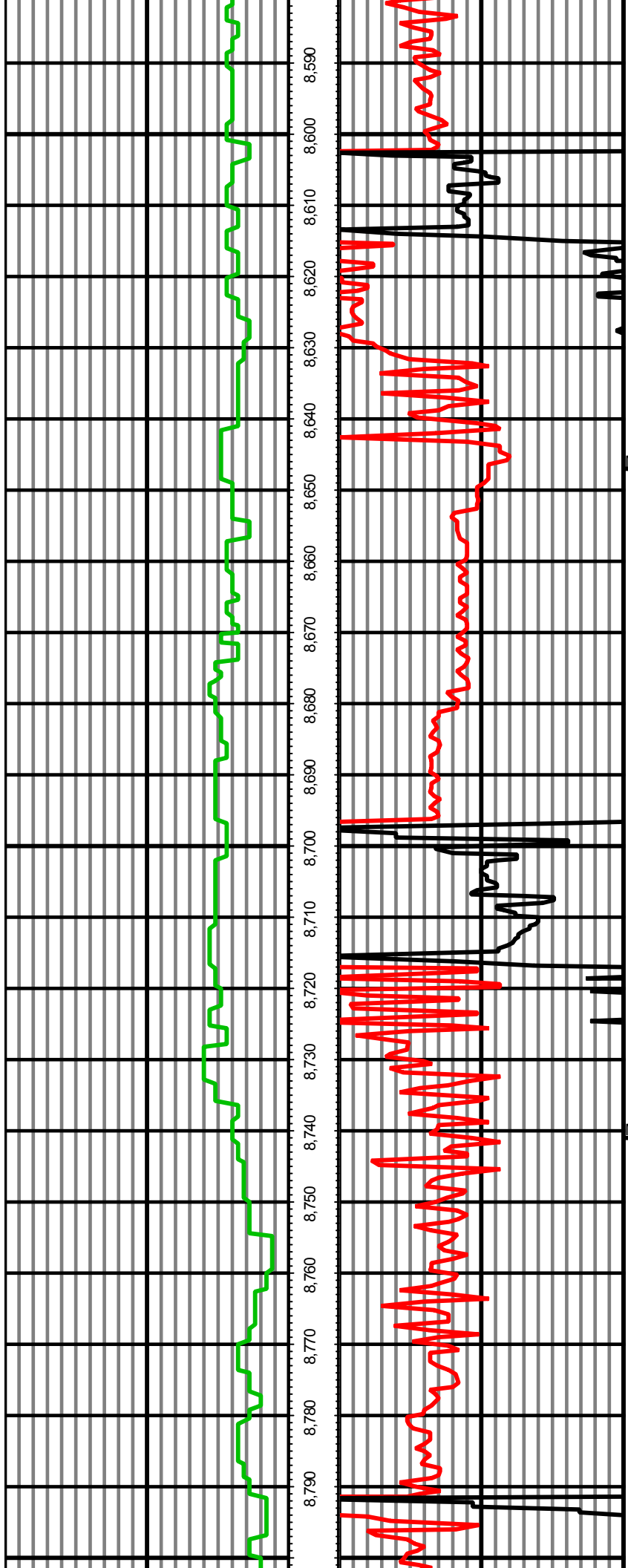






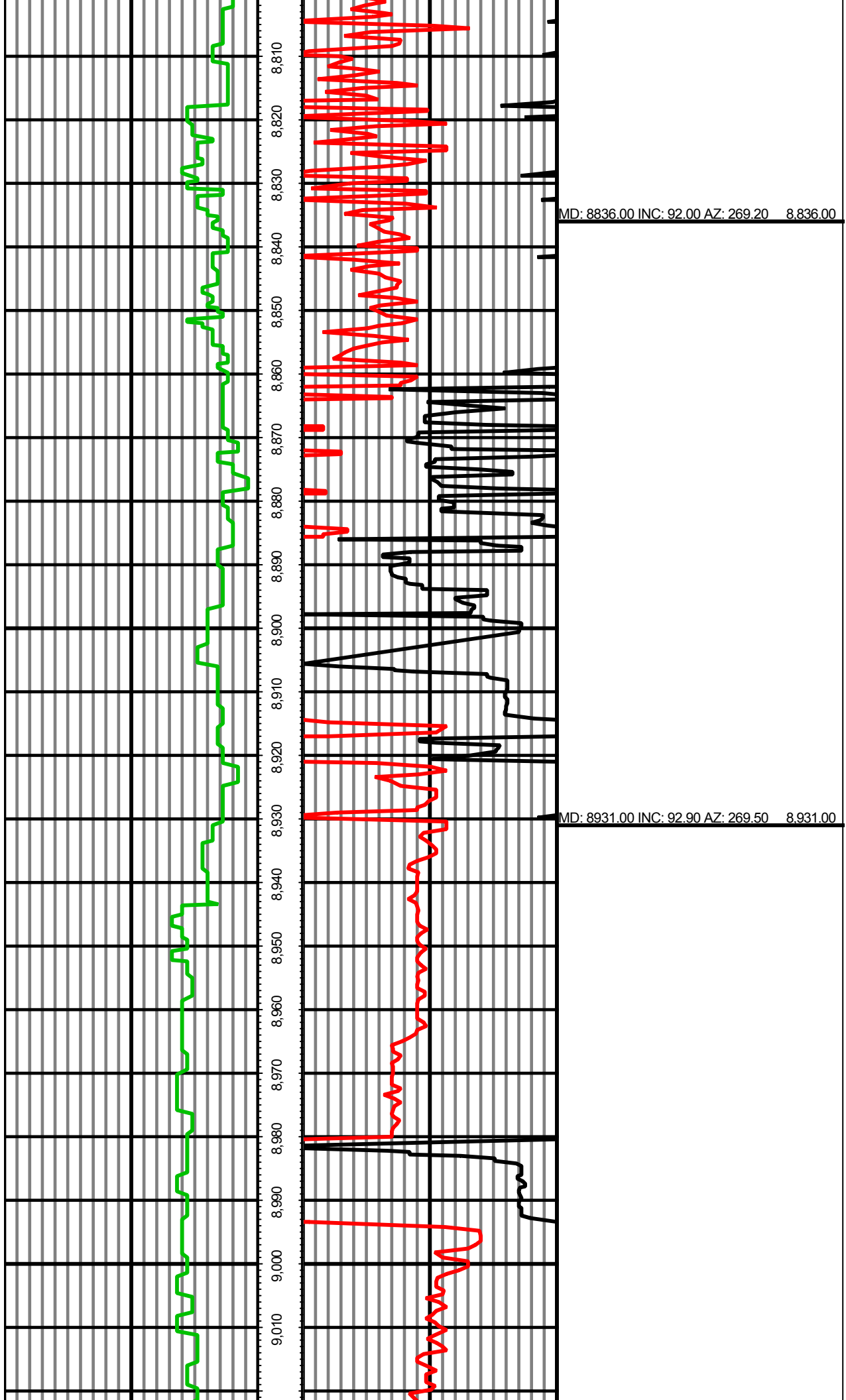


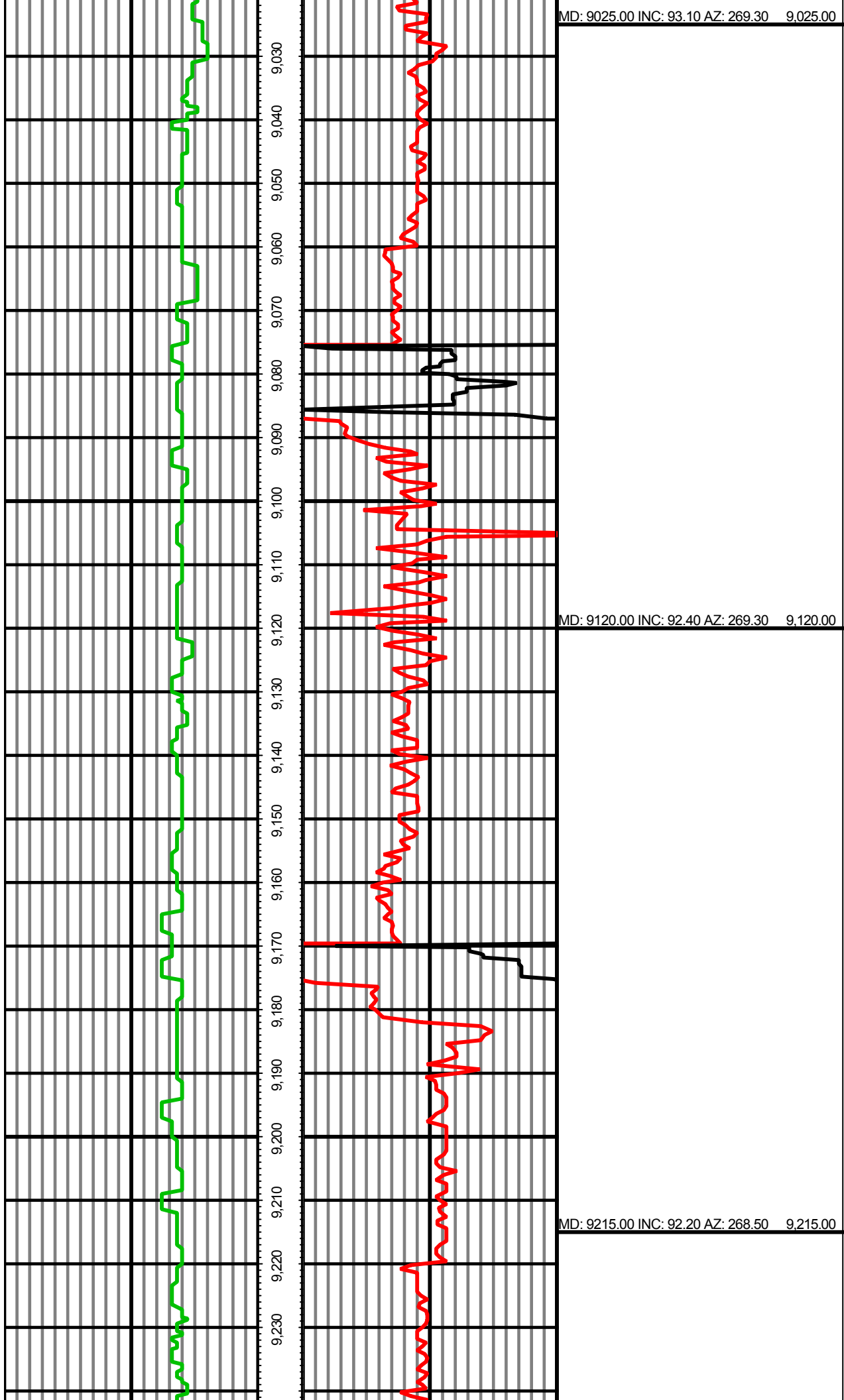
MD: 8363.00 INC: 92.70 AZ: 270.60 8,363.00		
MD: 8457.00 INC: 91.80 AZ: 270.90 8,457.00		
MD: 8552.00 INC: 91.20 AZ: 270.20 8,552.00		

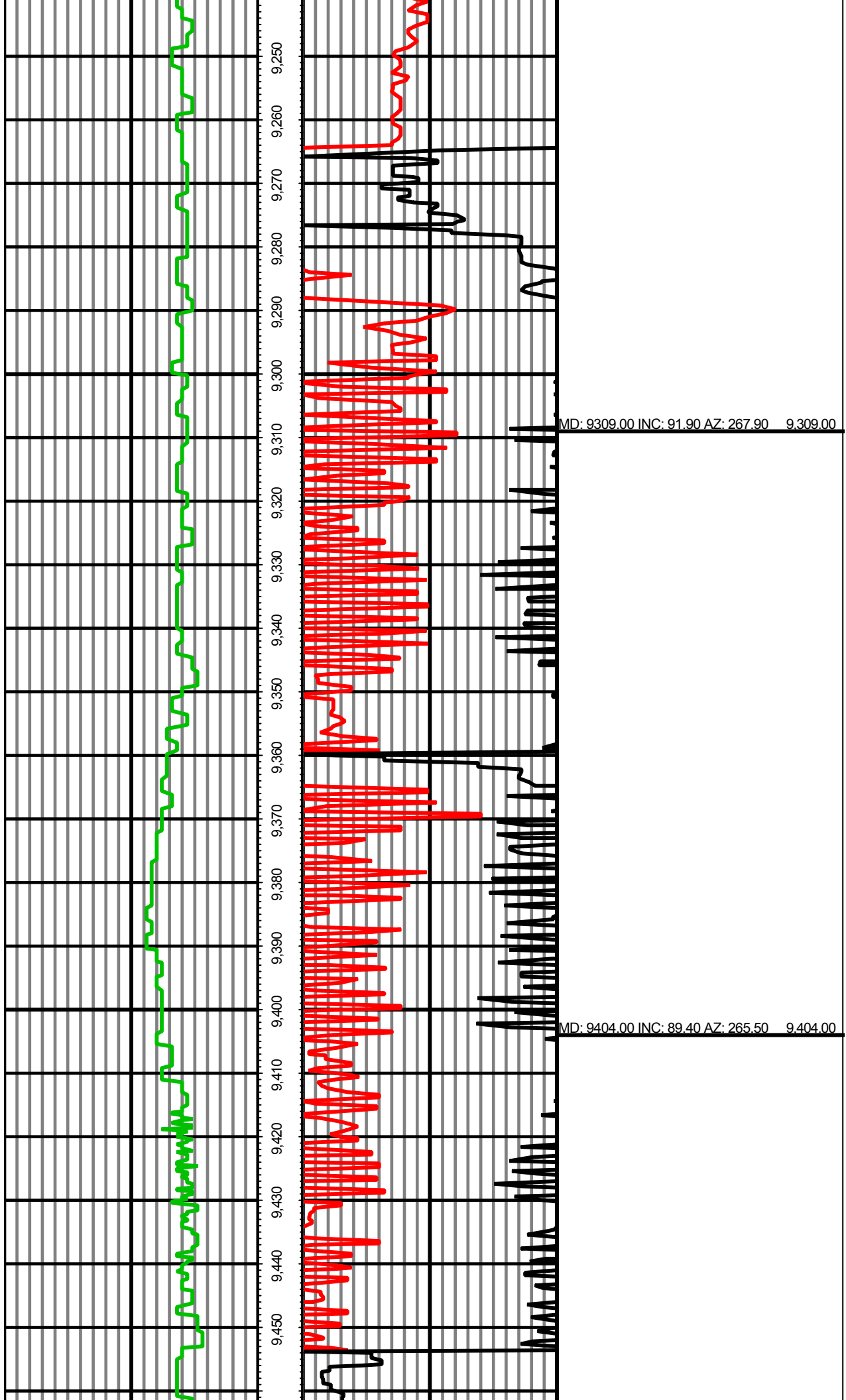


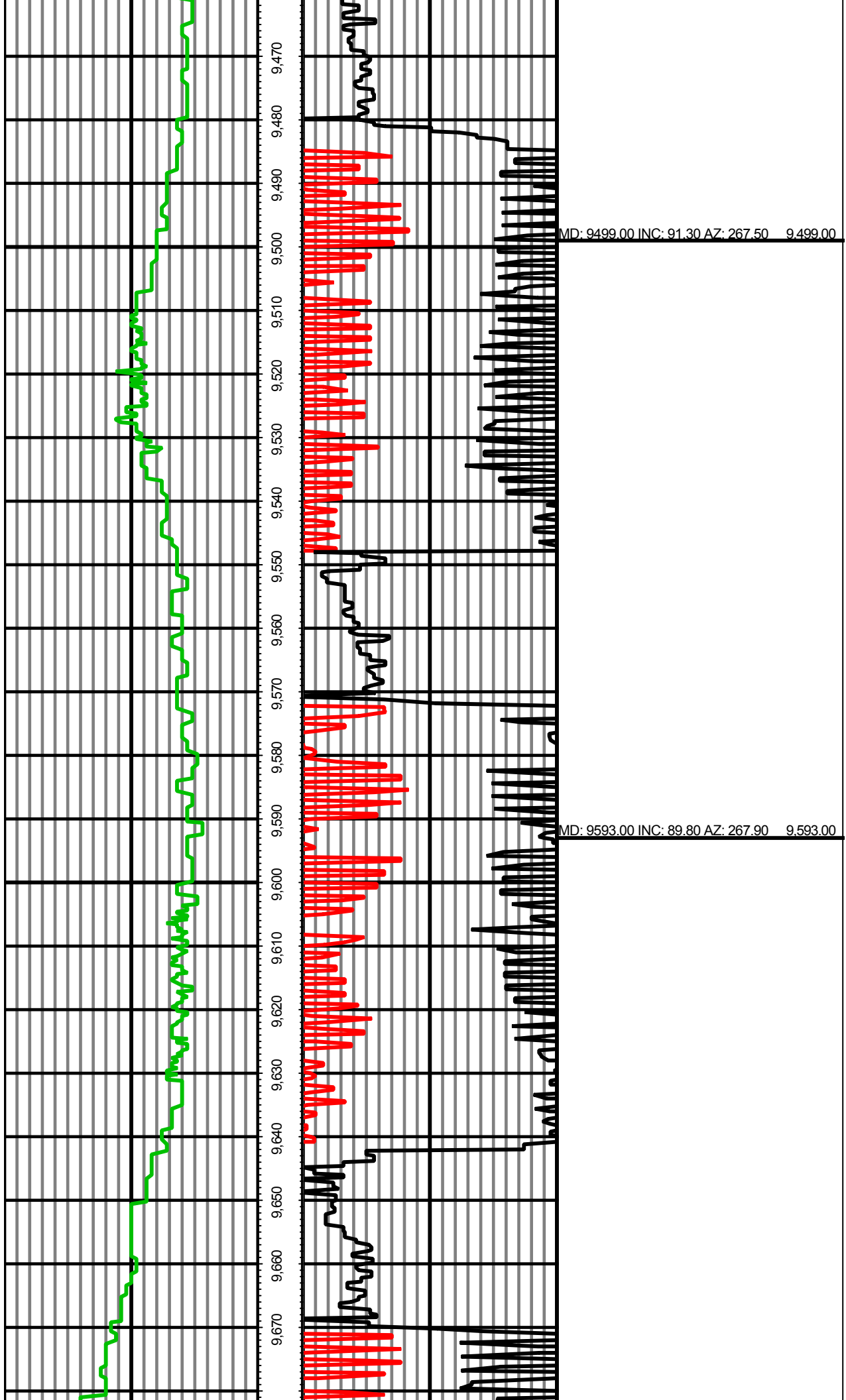
MD: 8647.00 INC: 91.30 AZ: 270.70 8,647.00

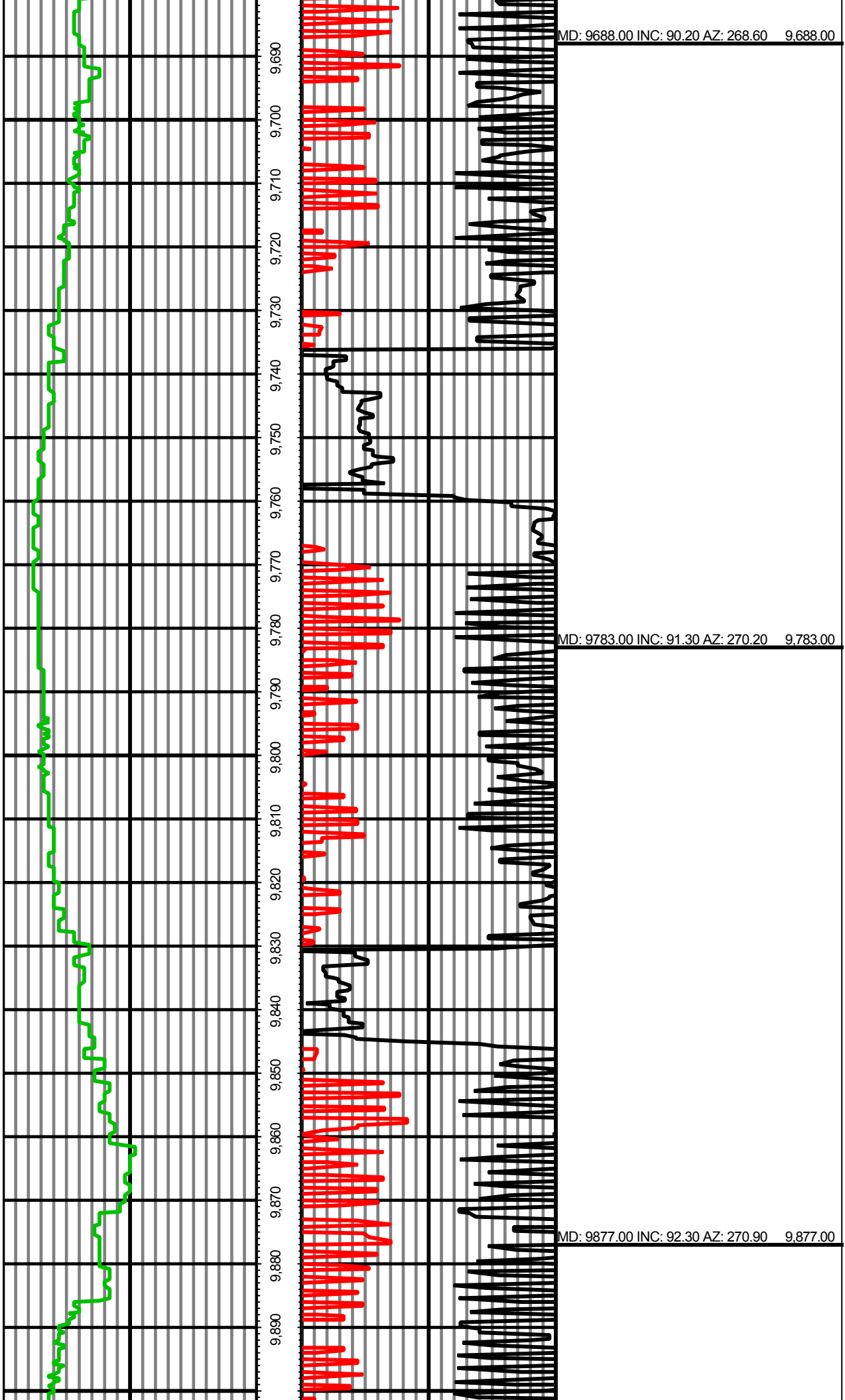
MD: 8741.00 INC: 92.50 AZ: 270.20 8,741.00

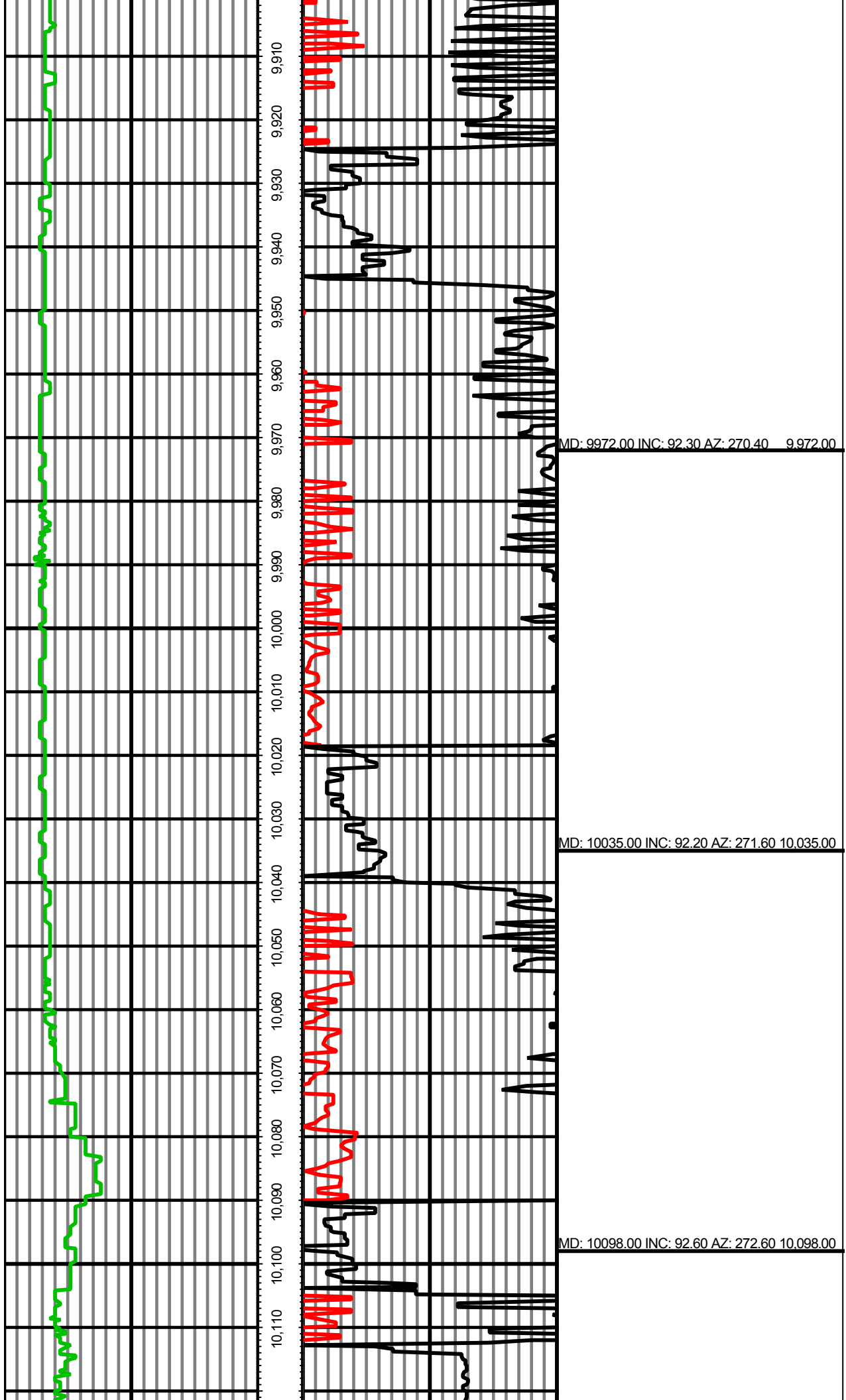


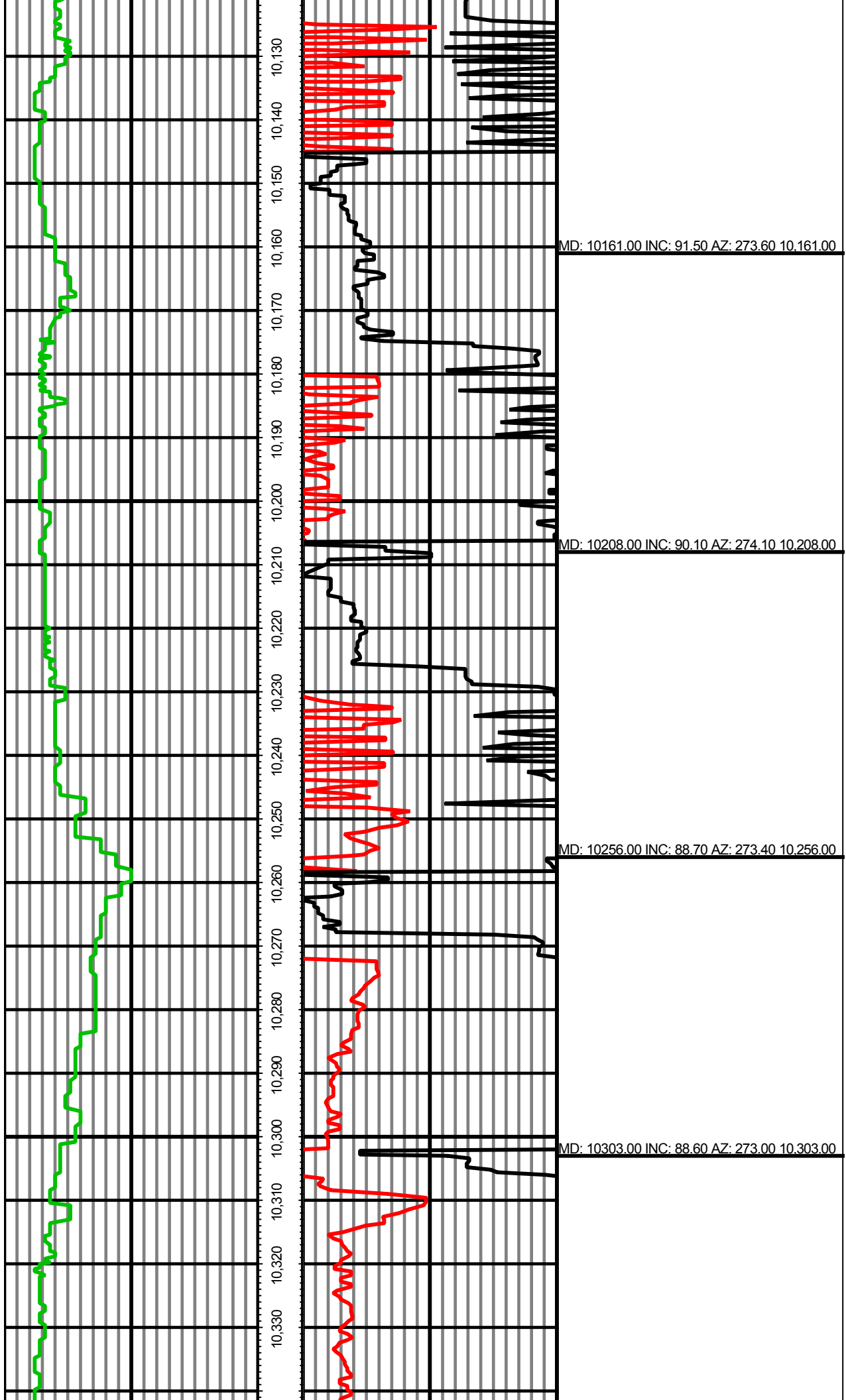


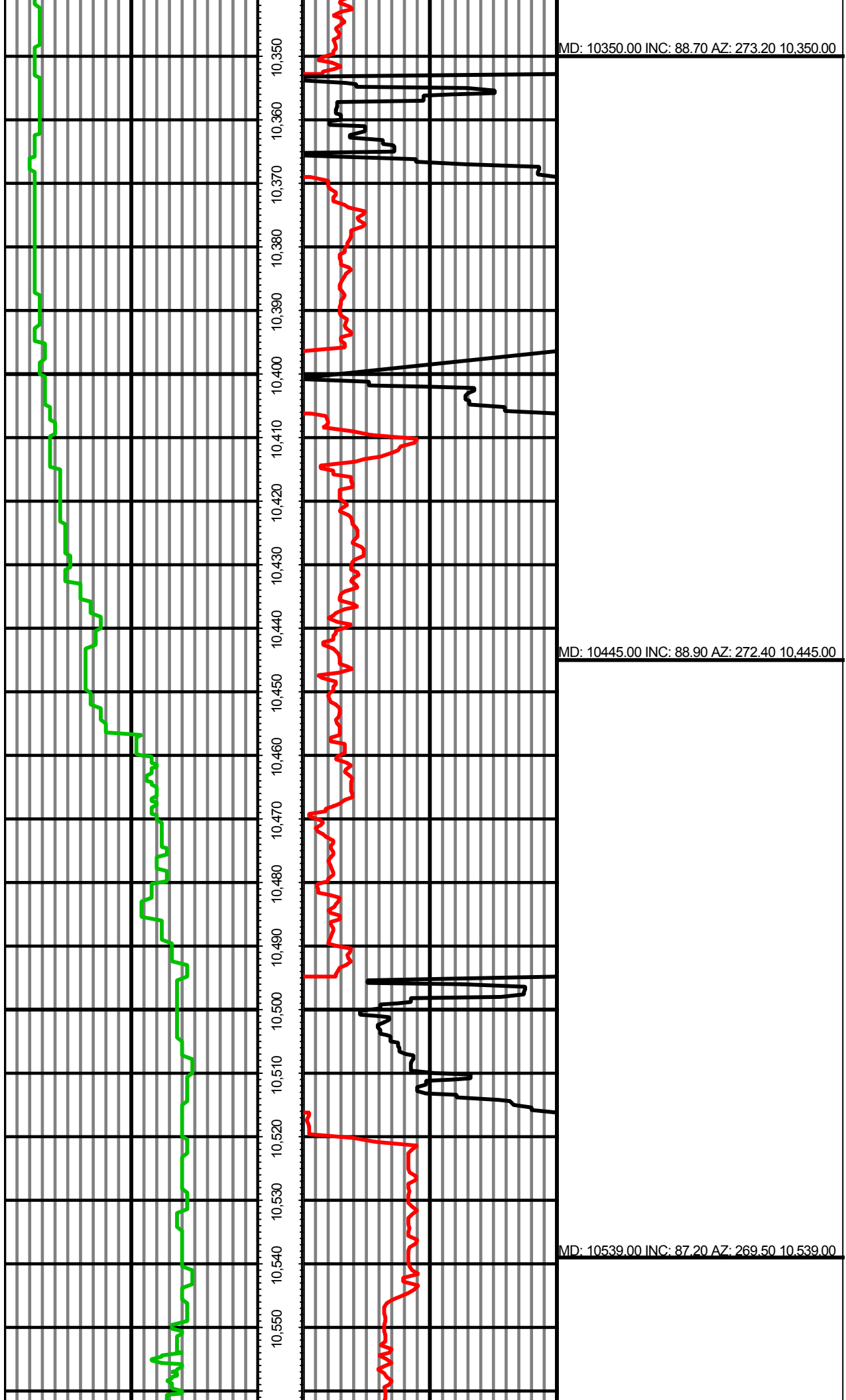


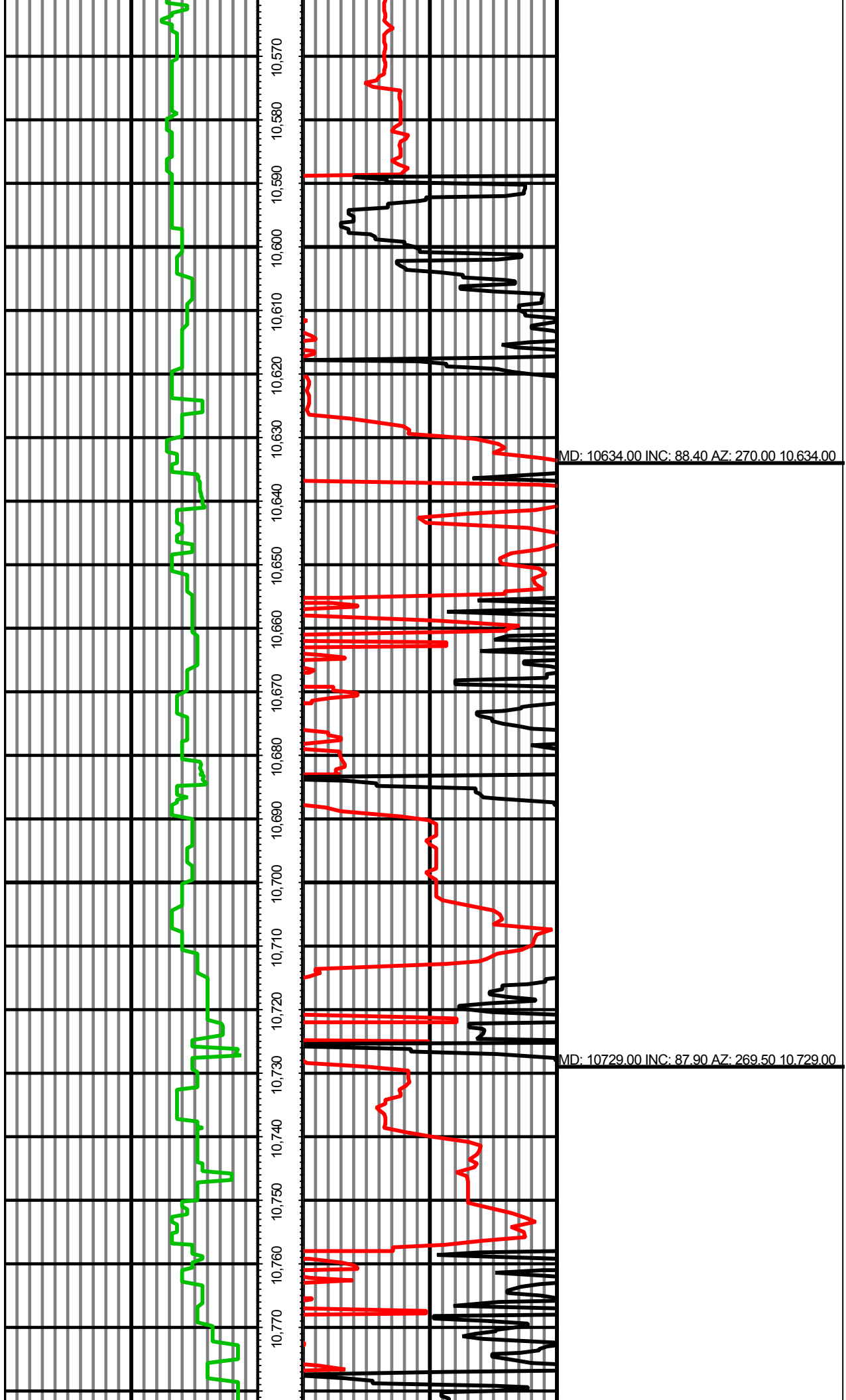


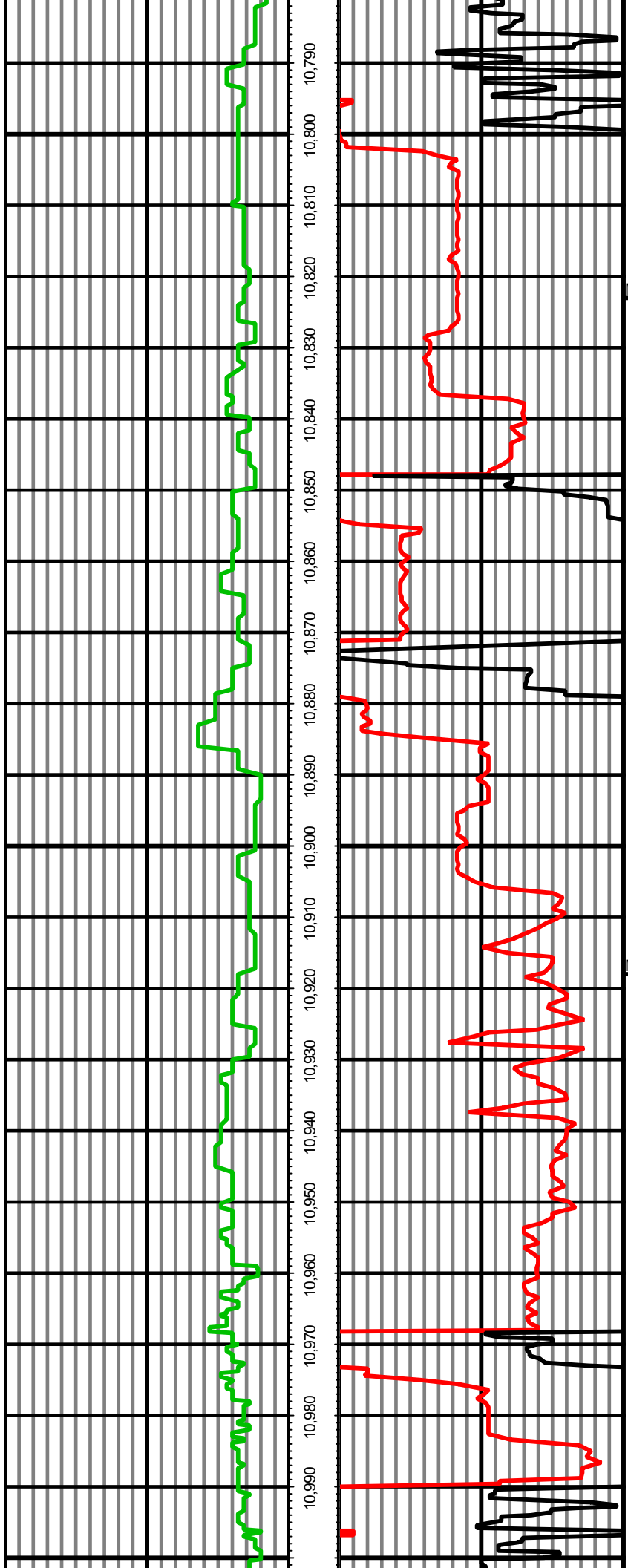






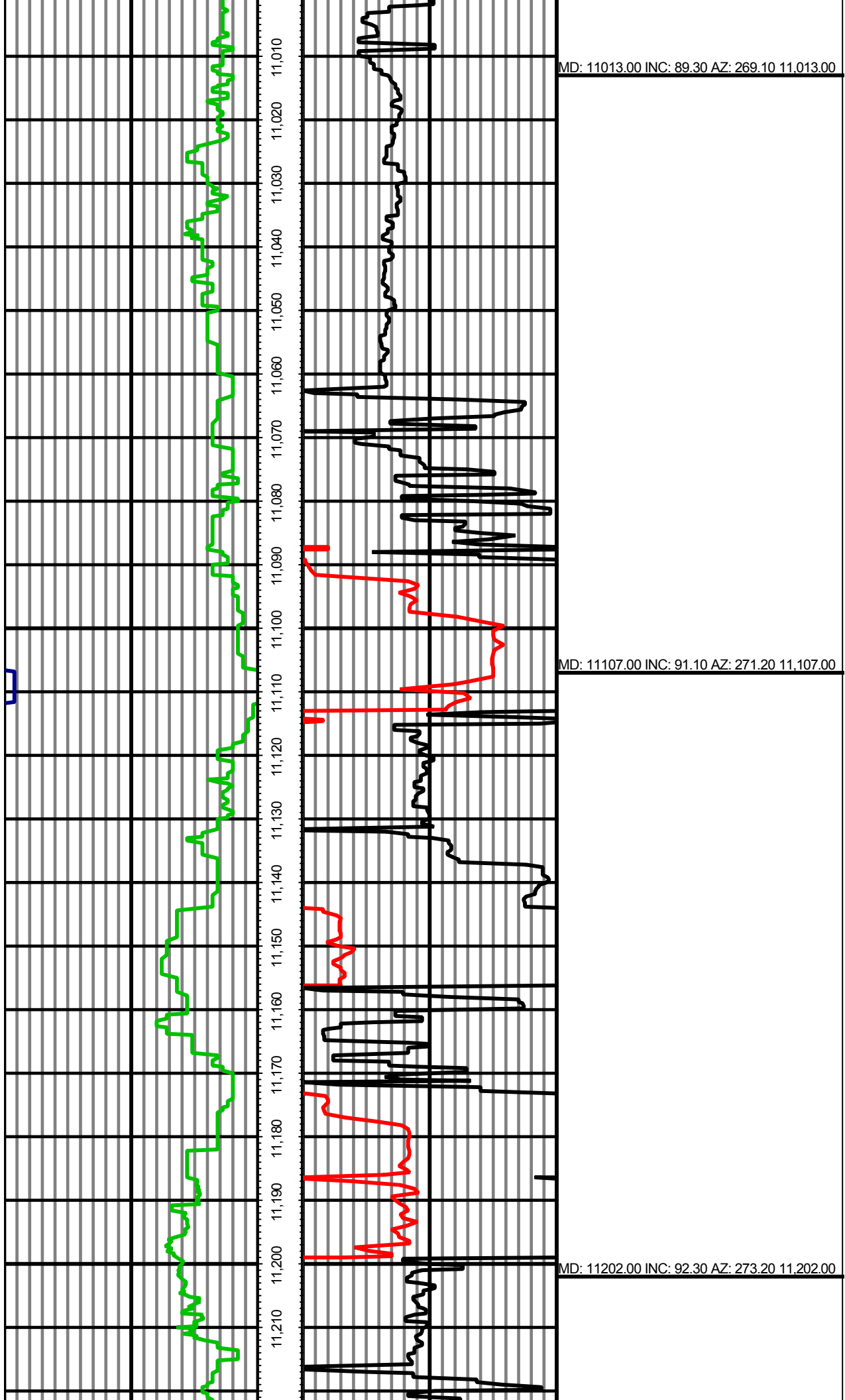


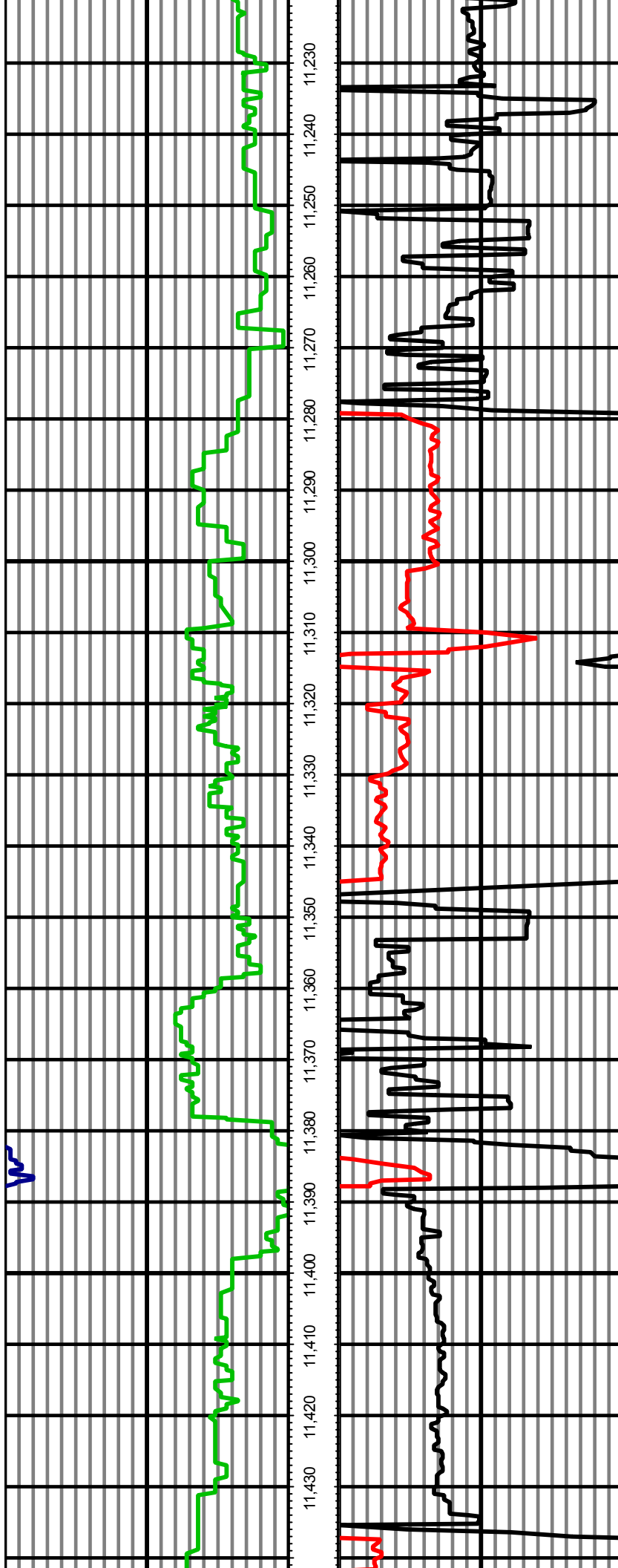




MD: 10823.00 INC: 89.80 AZ: 270.20 10.823.00

MD: 10918.00 INC: 89.80 AZ: 269.80 10.918.00





MD: 11297.00 INC: 87.80 AZ: 270.60 11,297.00

MD: 11392.00 INC: 91.60 AZ: 269.00 11,392.00

