



Cathedral Energy Services

**145030**

5":100' - TVD

2/16/2014 2:55:00 AM

**Oper. Company:** Encana Oil & Gas

**Country:** USA

**State / Province:** Colorado

**County / Parish:** Weld

**API/UWI:** 051233620600

**Field:** DJ Basin

**Well:** Liberty 2B-21H

**Rig:** Ensign 135

### Personnel

**Day Hand:** John Corby

**Night Hand:** Kenneth Wagoner

### Location

**Latitude:** 40.215250

**Longitude:** -105.008780

**Elev. GL:** 5023

**Elev. DF:** 5036

**Elev. KB:** 5036

### Hole Data

Size	From	To
8.75	916	7433
6.125	7433	11201

### Casing Data

Size	From	To
7	921	7383

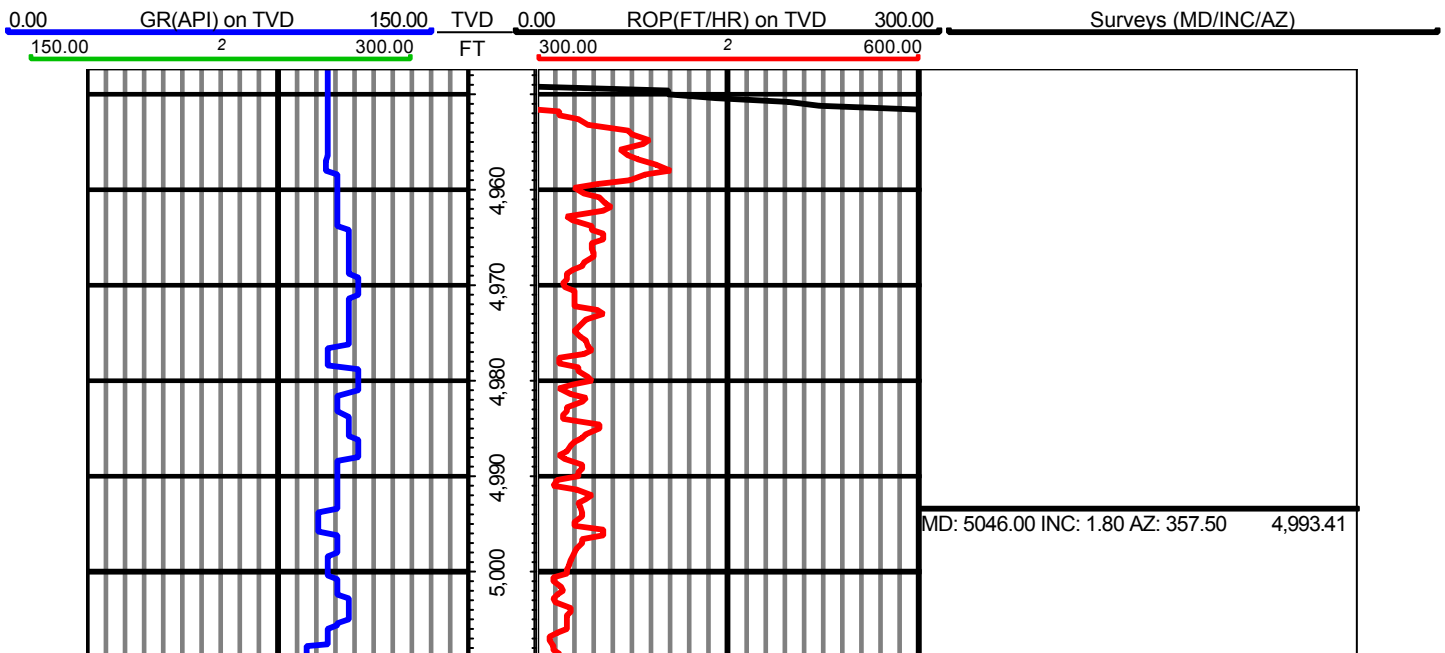
### Mud Data

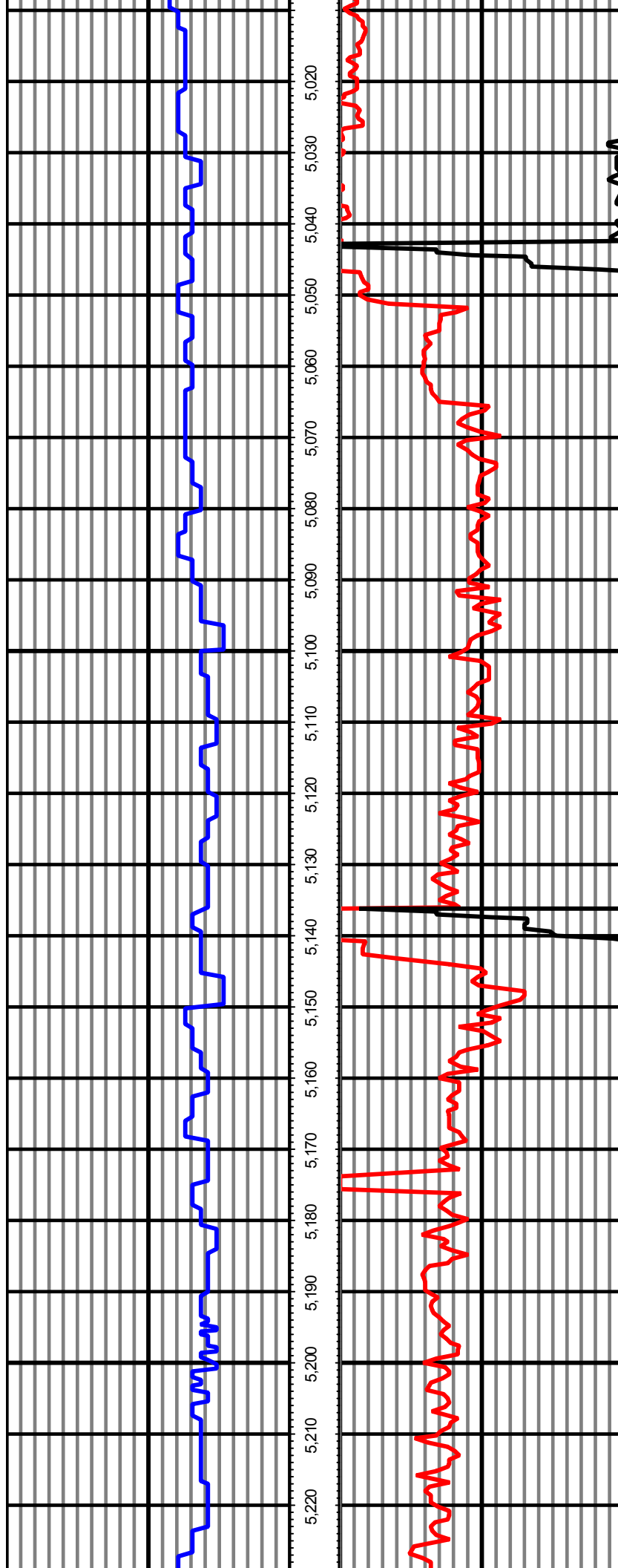
Weight	From	To
--------	------	----

### Tool Run Data

Serial Number	Gamma Offset	Resist. Offset	Start Time	Start Depth	End Time	End Depth
1061	36.8	0	2/8/2014 2:00:39 AM	916	2/10/2014 5:00:39 AM	7433
1061	35.42	0	2/11/2014 1:00:52 PM	7433	2/15/2014 1:42:52 PM	11201

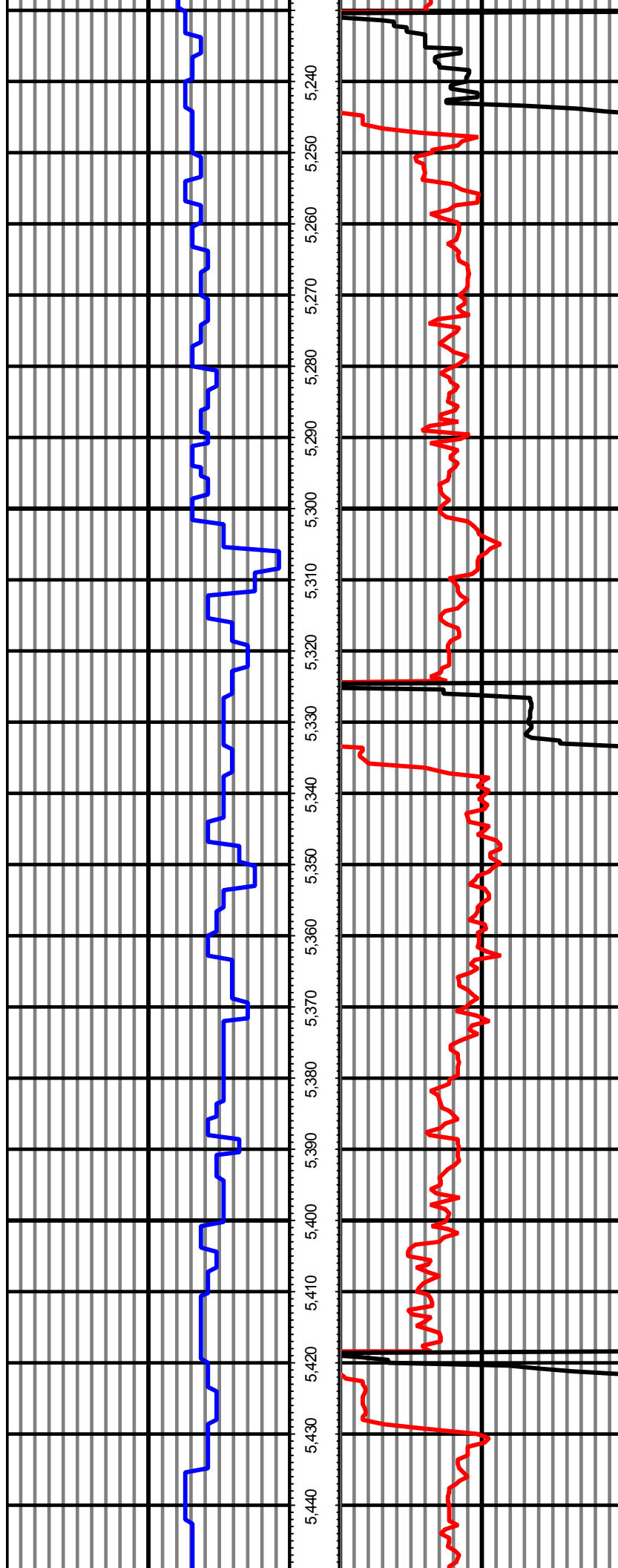
*All interpretations are opinions based on inferences from electrical or other measurements and we cannot and do not guarantee the accuracy or correctness of any interpretation, and we shall not except in the case of gross or willful negligence on our part, be liable or responsible for any loss, cost damages or expenses incurred or sustained by anyone resulting from an interpretation made by any of our officers, agents, or employees.*





MD: 5140.00 INC: 1.80 AZ: 343.30 5,087.36

MD: 5235.00 INC: 1.50 AZ: 330.20 5,182.32

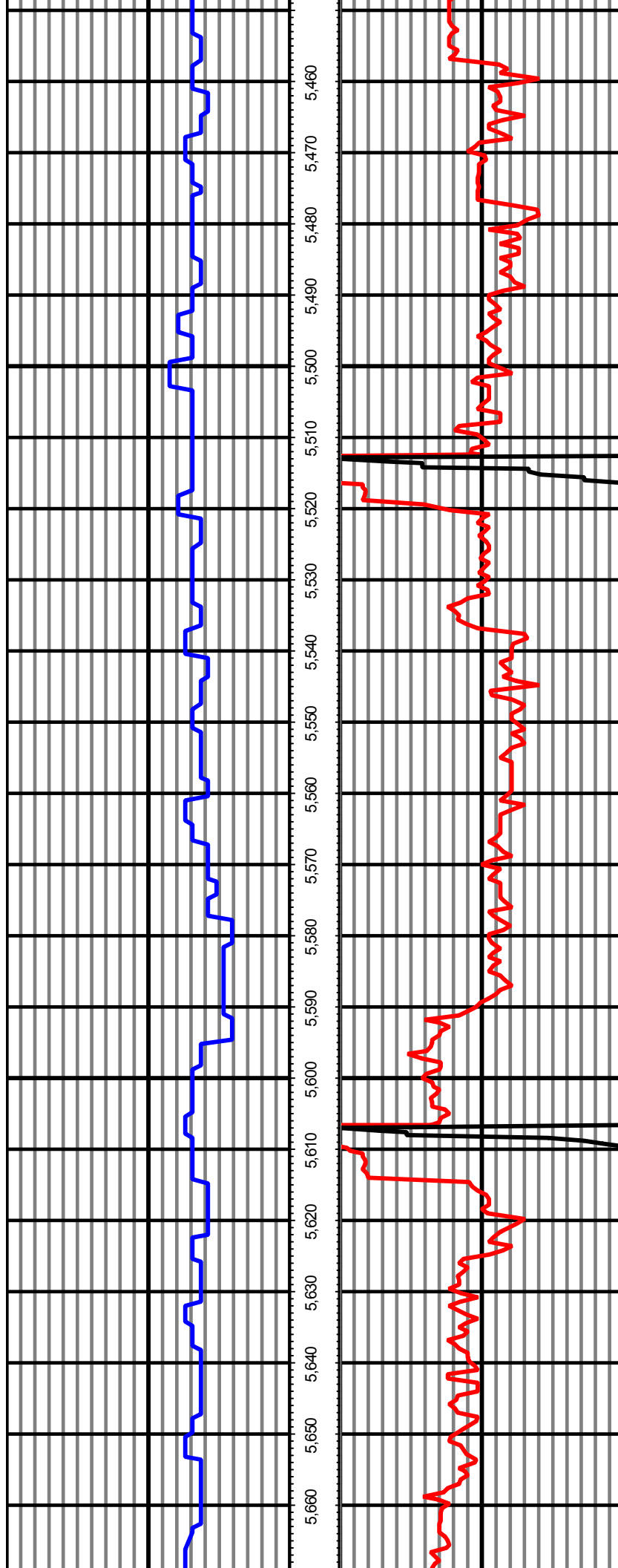


MD: 5330.00 INC: 0.90 AZ: 90.60

5,277.31

MD: 5425.00 INC: 0.50 AZ: 88.30

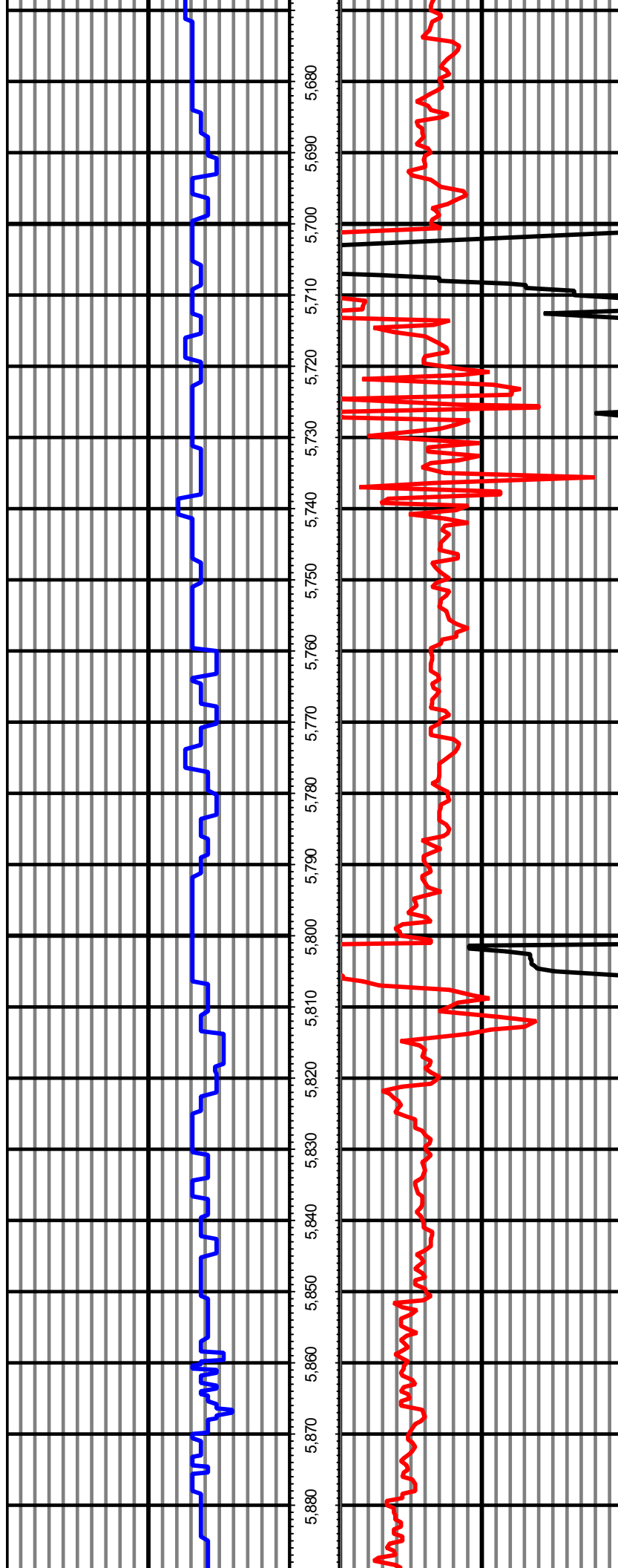
5,372.30



MD: 5520.00 INC: 0.40 AZ: 101.20 5,467.30

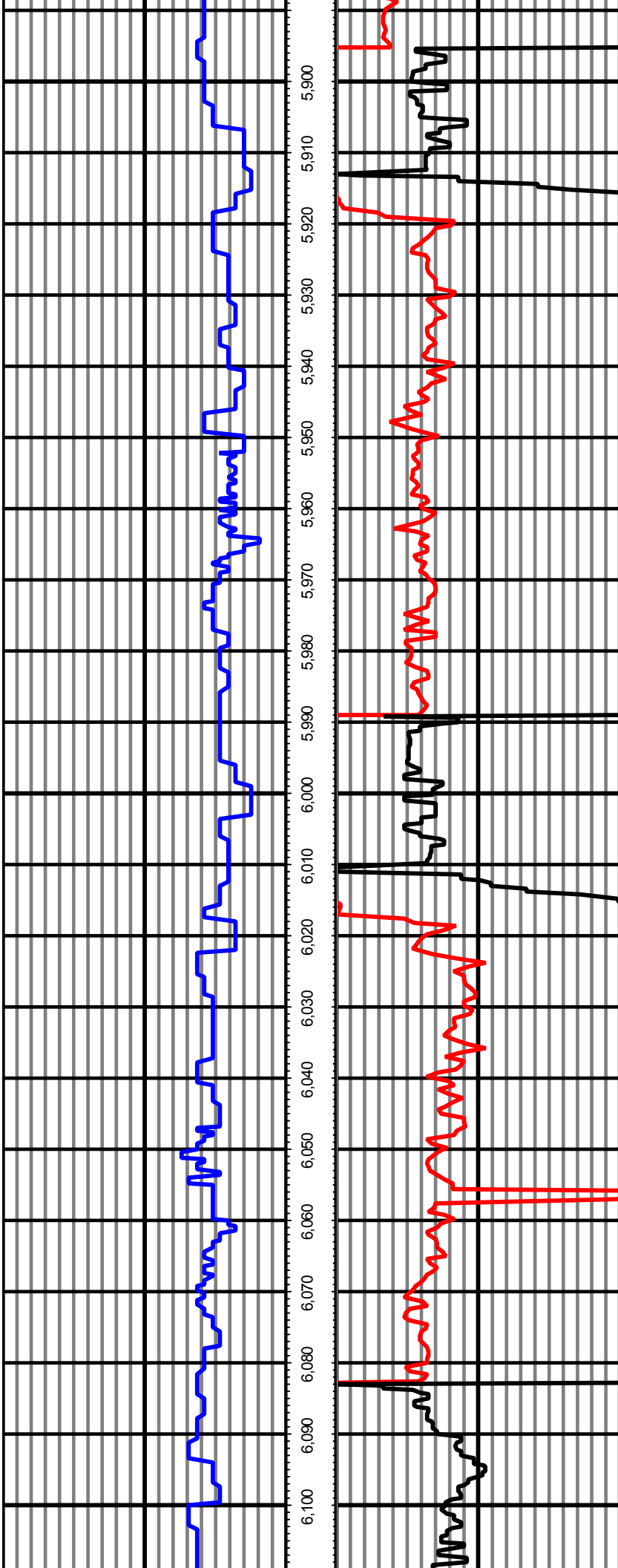
MD: 5614.00 INC: 0.20 AZ: 114.10 5,561.30

MD: 5709.00 INC: 0.20 AZ: 337.70 5,656.30



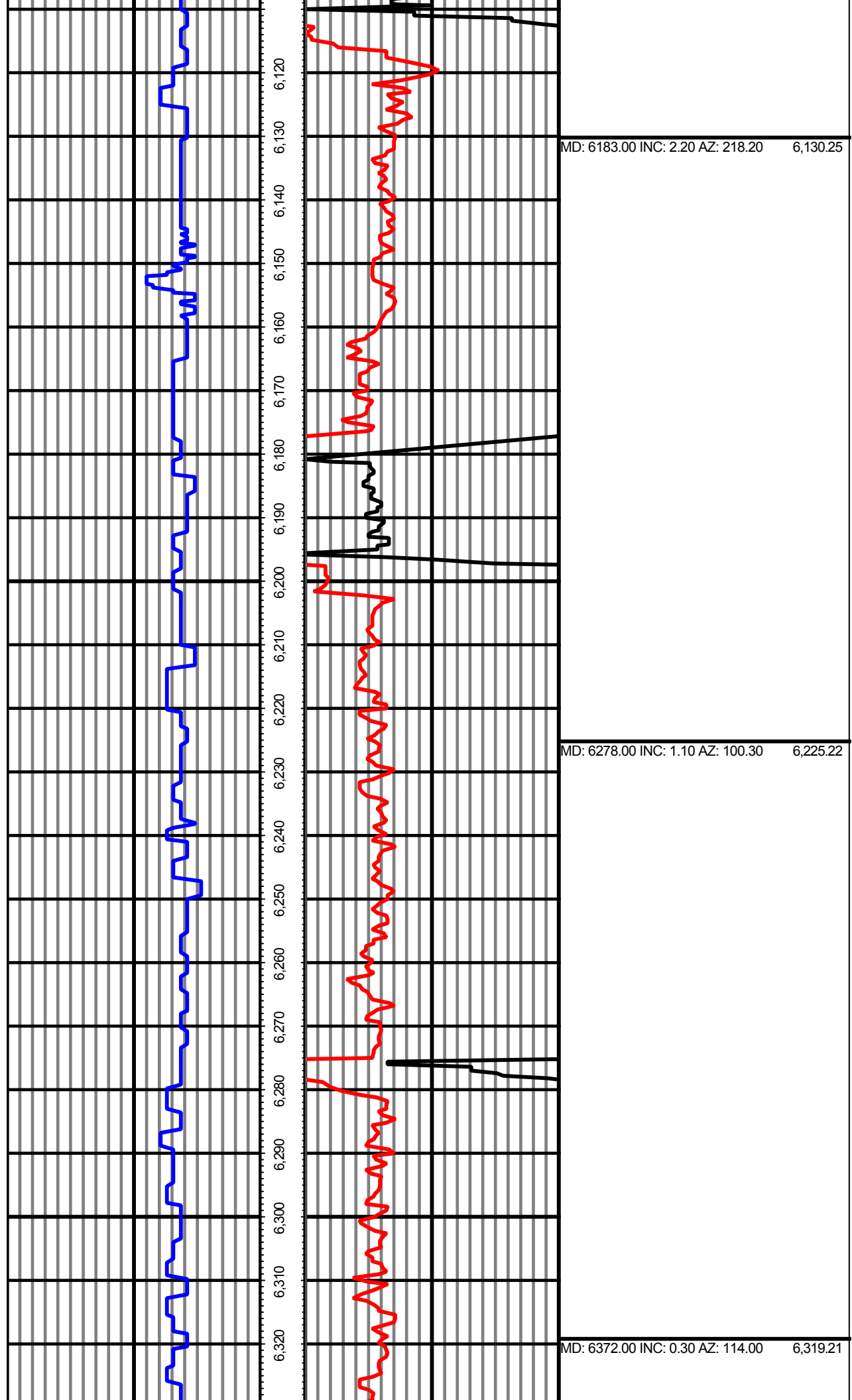
MD: 5804.00 INC: 0.40 AZ: 294.40 5,751.30

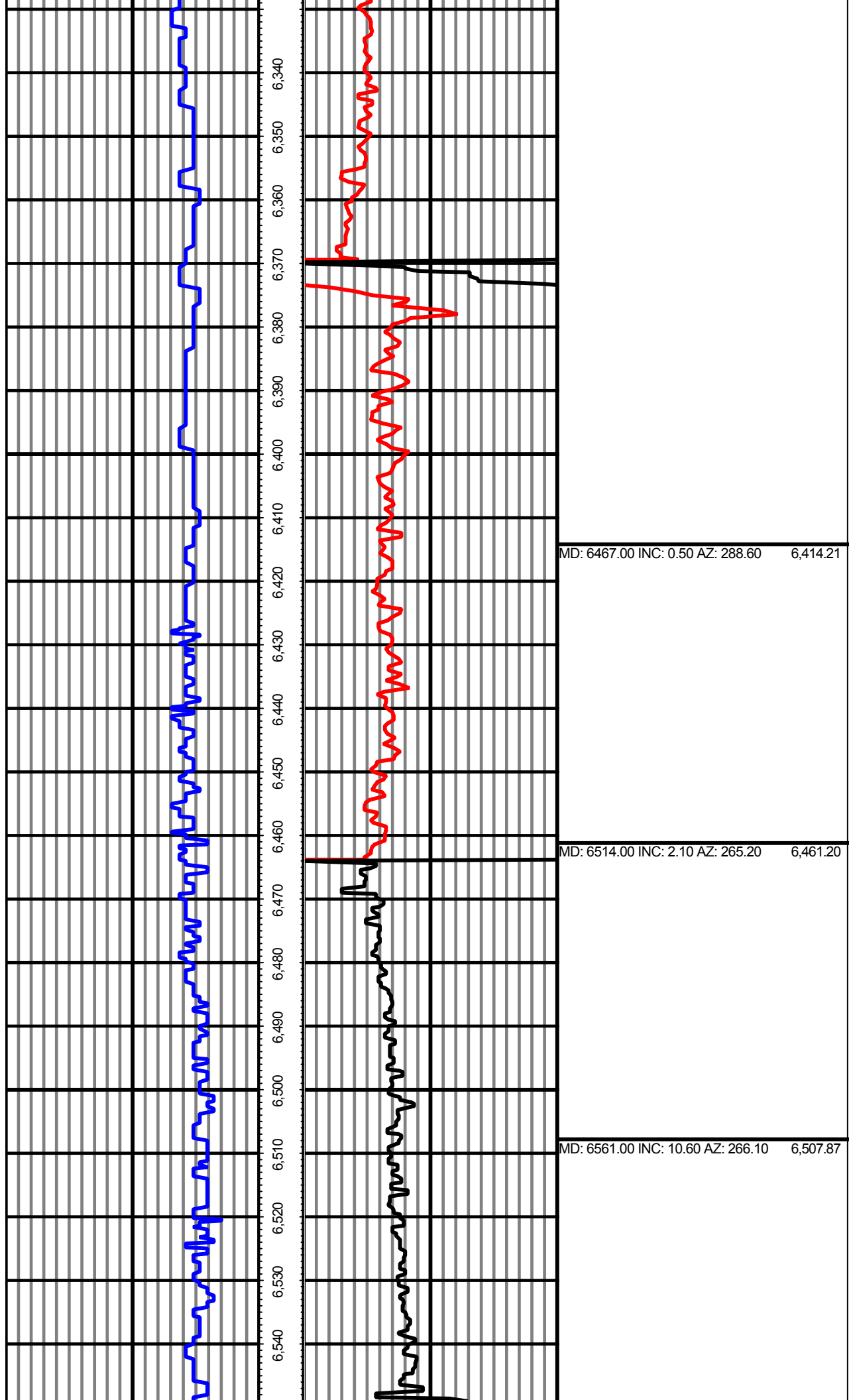
MD: 5899.00 INC: 0.80 AZ: 272.60 5,846.29



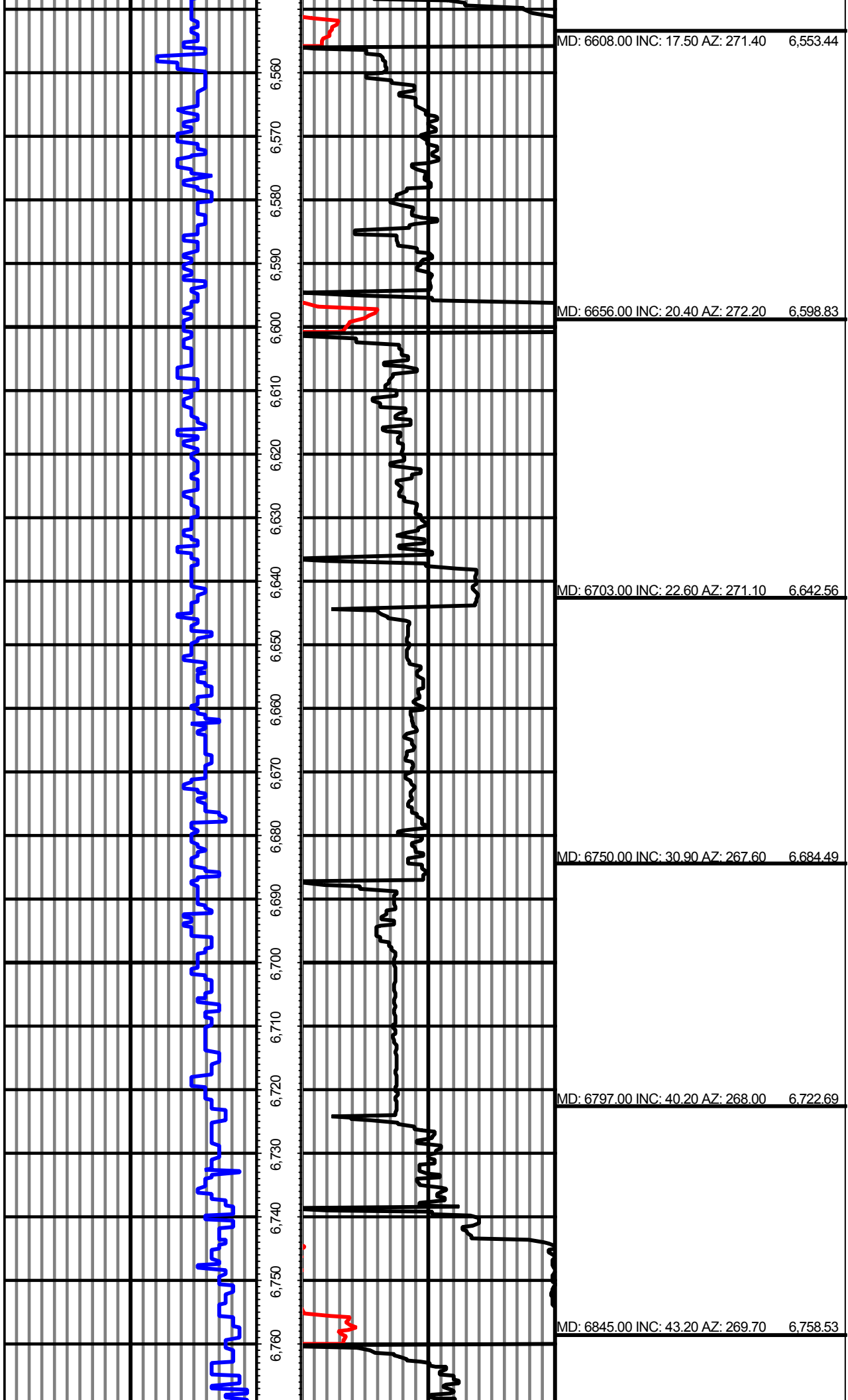
MD: 5994.00 INC: 0.80 AZ: 356.00 5,941.29

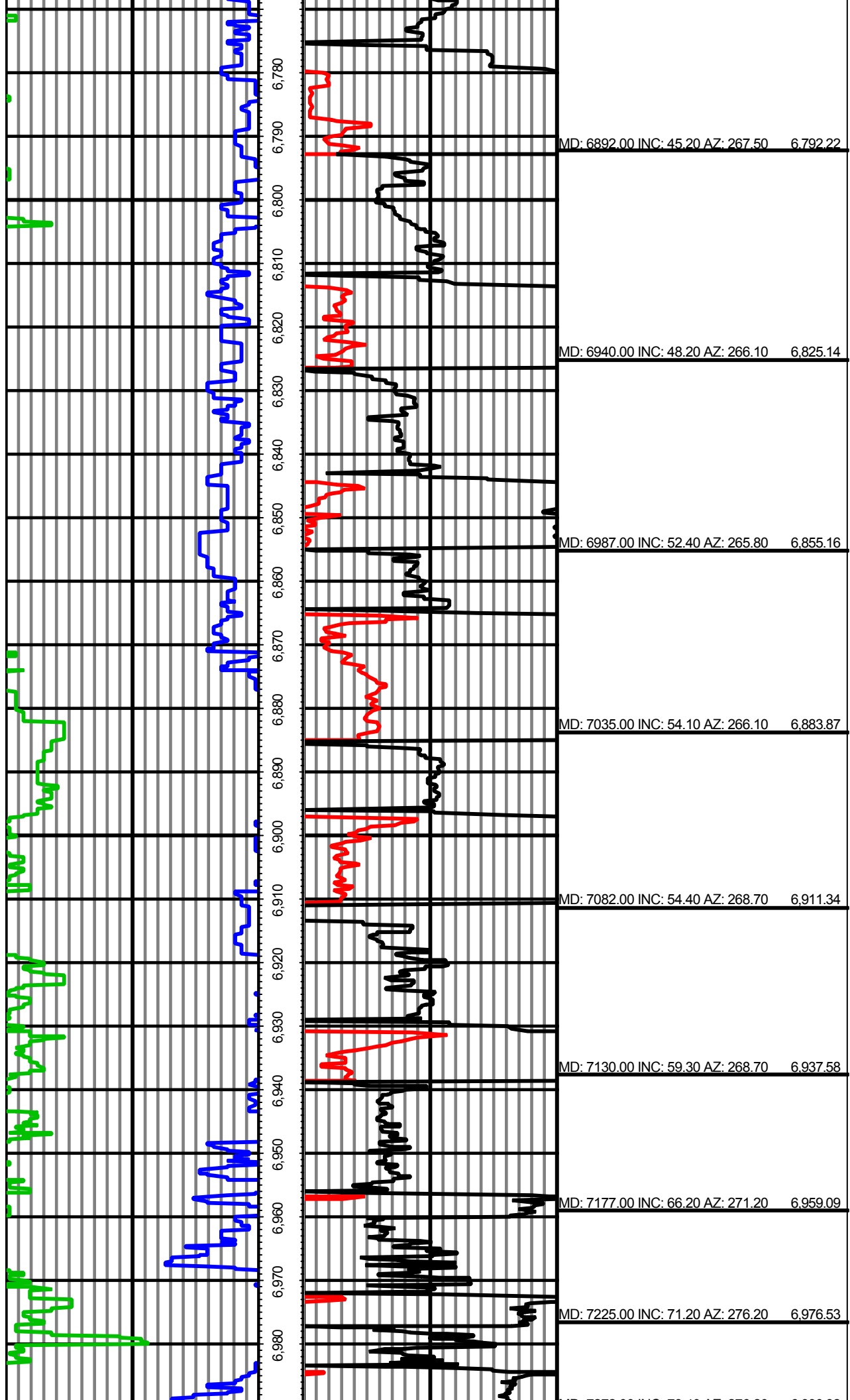
MD: 6088.00 INC: 1.20 AZ: 327.40 6,035.27













0.00 GR(API) on TVD 150.00 TVD 0.00 ROP(FT/HR) on TVD 300.00 Surveys (MD/INC/AZ)  
150.00 2 300.00 FT 300.00 2 600.00