



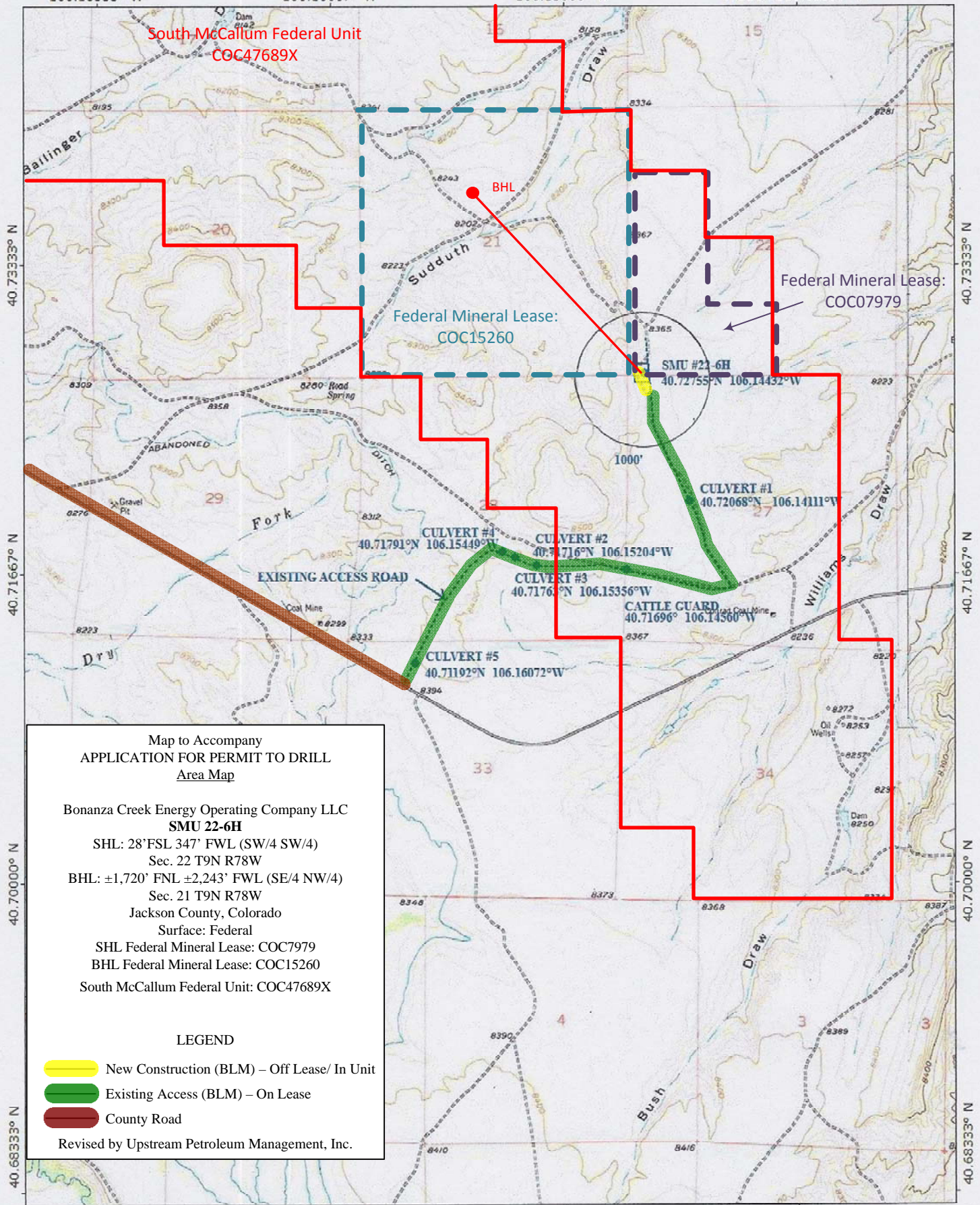
# Bonanza Creek Energy SMU #22-6H Vicinity Map with Access Road

106.18333° W

106.16667° W

106.15000° W

WGS84 106.13333° W



## Map to Accompany APPLICATION FOR PERMIT TO DRILL Area Map

Bonanza Creek Energy Operating Company LLC  
**SMU 22-6H**

SHL: 28' FSL 347' FWL (SW/4 SW/4)

Sec. 22 T9N R78W

BHL: ±1,720' FNL ±2,243' FWL (SE/4 NW/4)

Sec. 21 T9N R78W

Jackson County, Colorado

Surface: Federal

SHL Federal Mineral Lease: COC7979

BHL Federal Mineral Lease: COC15260

South McCallum Federal Unit: COC47689X

### LEGEND

- New Construction (BLM) – Off Lease/ In Unit
- Existing Access (BLM) – On Lease
- County Road

Revised by Upstream Petroleum Management, Inc.

TN/MN  
10°

106.18333° W

106.16667° W

106.15000° W

WGS84 106.13333° W

0 5 1 MILE  
0 1000 FEET 0 500 1000 METERS

Map created with TOPO!® ©2003 National Geographic (www.nationalgeographic.com/topo)