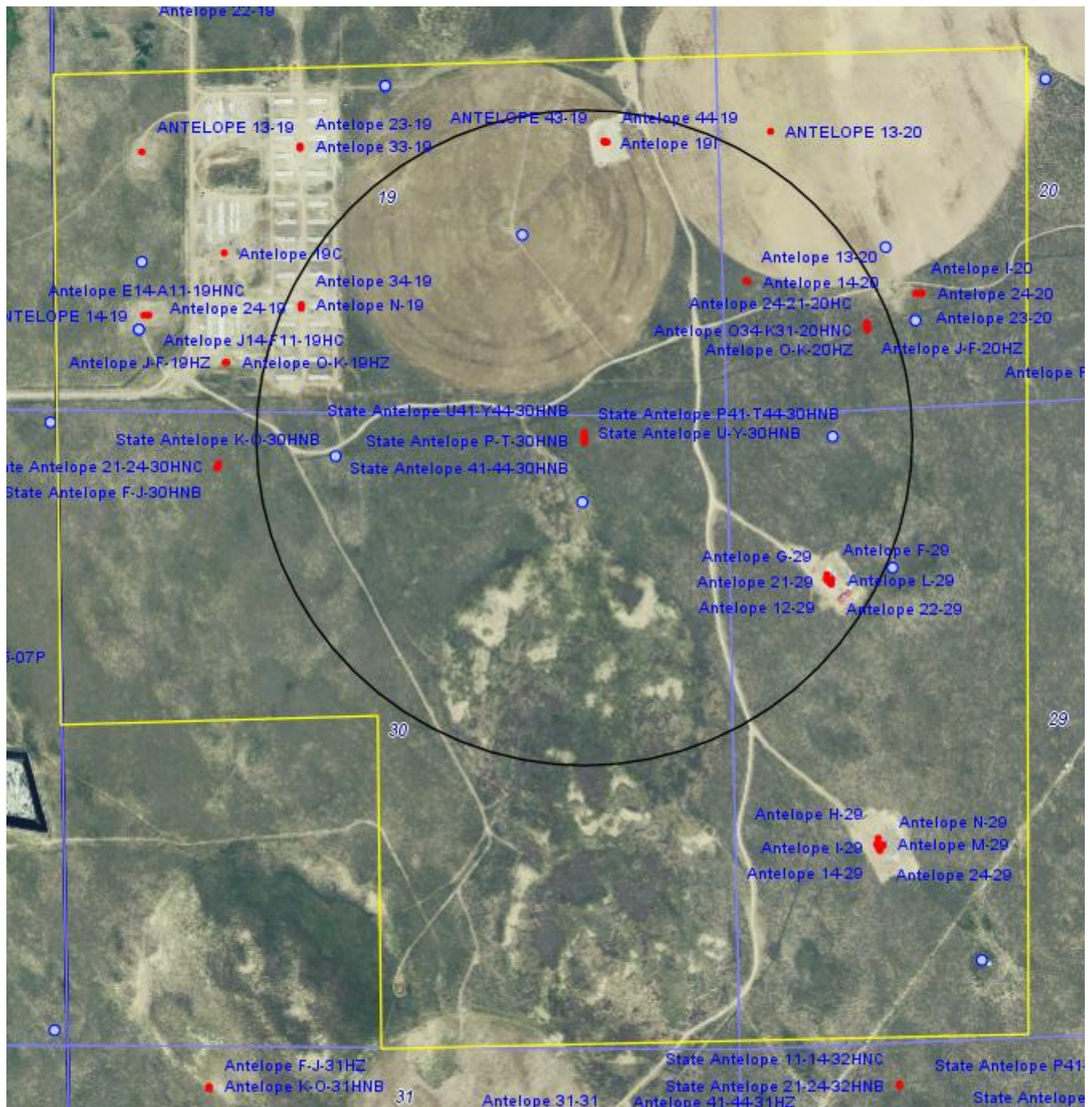


State Antelope P-30 Pad DWR Wells

Sec 30 T5N R62W

Bonanza Creek Energy Operating Company LLC



State Antelope P-30 Pad DWR Well Status
Sec 30 T5N R62W
Bonanza Creek Energy Operating Company LLC

WELL DESCRIPTION	LOCATION	WELL INFORMATION				Well Status
		Depth	Top Perf	Bottom Perf	Aquifer	
Receipt=0000056, Permit=1992001-AB- NATIONAL HOG FARMS	19 5 N-62W	160	0	0	GW	Not representative/equipped (Monitoring hole)
Receipt=3659429, Permit=0290984-- 70 RANCH RESOURCE DEVELOPMENT LLC	19 5 N-62W	0	0	0	GW	Not representative/equipped (Monitoring hole)
Receipt=9063880, Permit=0036912-- ALLARD CATTLE CO	NWSE 19 5 N-62W	167	0	0	GW	Not equipped/not maintained - stock well
Receipt=0024457, Permit=0024457-MH- NATIONAL HOG FARMS	SWSW 19 5 N-62W	0	0	0	GW	Not representative/equipped (Monitoring hole)
Receipt=0041937, Permit=0041937-MH- NATIONAL HOG FARMS	SWSW 19 5 N-62W	0	0	0	GW	Not representative/equipped (Monitoring hole)
Receipt=0508477C, Permit=0249907-- NATIONAL HOG FARM KERSEY	SWSW 19 5 N-62W	0	0	0	GW	Not representative/equipped (Monitoring hole)
Receipt=0023006, Permit=0023006-MH- NATIONAL HOG FARM	SW 20 5 N-62W	65	0	0	GW	Plugged and abandoned
Receipt=0336034I, Permit=0163754-- NATIONAL HOG FARMS INC	SESW 20 5 N-62W	41	20	41	GW	Plugged and abandoned
Receipt=0023007, Permit=0023007-MH- NATIONAL HOG FARM	NW 29 5 N-62W	50	0	0	GW	Plugged and abandoned
Receipt=0311531E, Permit=0036657-M- NATIONAL HOG FARMS	NWNW 29 5 N-62W	40	0	0	GW	Plugged and abandoned
Receipt=9063881, Permit=0036913-- ALLARD CATTLE CO	SESW 29 5 N-62W	210	0	0	GW	Not equipped/not maintained - stock well
Receipt=9065624, Permit=0081434-- STATE BOARD OF LAND COMMISSIONERS	NENE 30 5 N-62W	190	0	0	GW	Not equipped/not maintained - stock well
Receipt=0385493E, Permit=0188373-- NATIONAL HOG FARMS	NENW 30 5 N-62W	26	14	24	GW	Not representative/equipped (Monitoring hole)