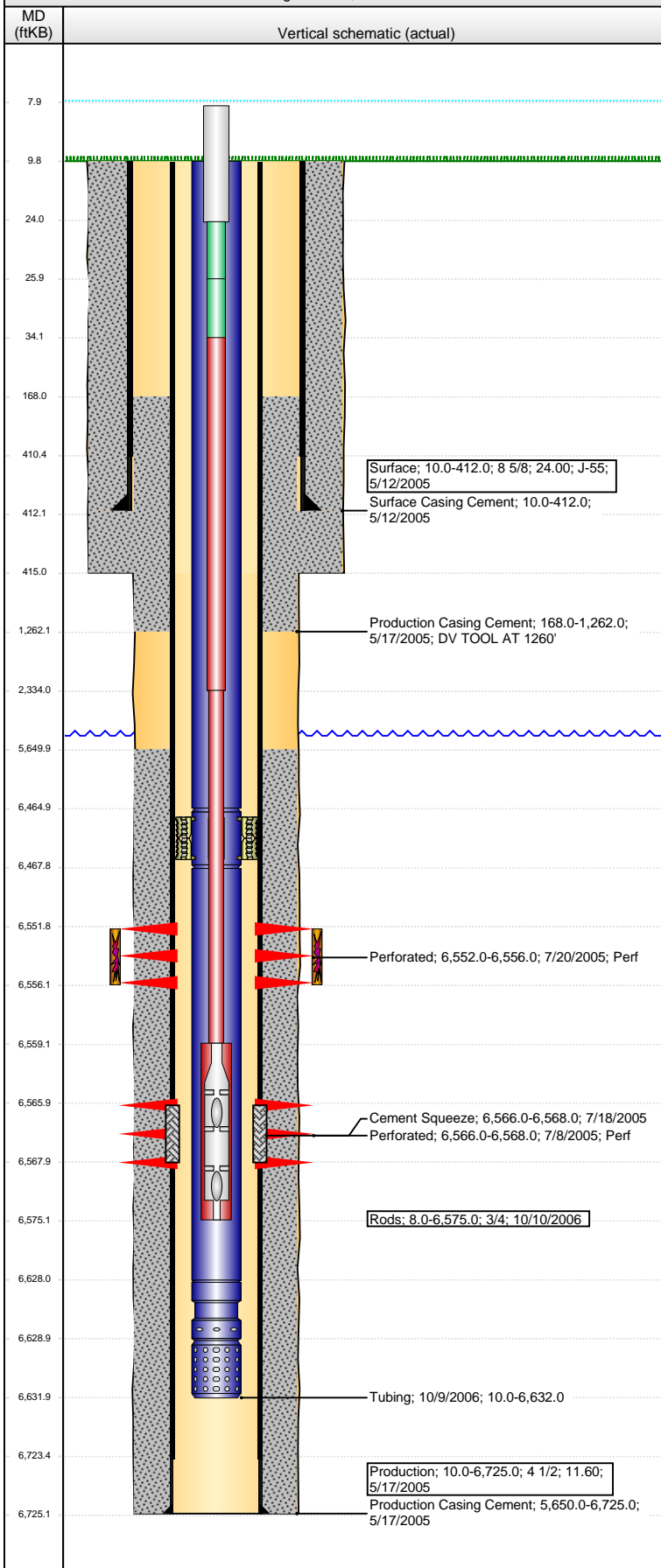


Well Name: PETERSON 1-35

VERTICAL - Original Hole, 6/4/2014 9:23:16 AM



Well Header

API	Business Unit	District	Well Config
05-123-22936	WATTENBERG	25	VERTICAL
Original KB Elevation (ft)	KB - GL / MSL (ftKB)	Spud Date	P & A Date
4,872.00	10.00	5/12/2005	

Comment

POSSIBLE CEMENT RETAINER REMNANTS HUNG UP AT 6680'.

Directions To Well

Congressional Location

Quarter 1	Quarter 2	Quarter 3	Quarter 4	Section	Township	Twnshp N...	Range	Rng E/W Dir
	NW	NE	NE	35	8	N	59	W

Bottom Hole Location

North-South Distance (ft)	From N or S Line	East-West Distance (ft)	From E or W Line

Plug Back Total Depths

Date	Depth (ftKB)	Method	Com

Wellbore Sections

Section Des	Size (in)	Act Top, MD (ftKB)	Act Btm, MD (ftKB)
SURFACE	12 1/4	10.0	415.0
PRODUCTION	7 7/8	415.0	6,725.0

Zone Statuses

Zone Name	Status Date	Status	Job

Casing Strings

Surface, 412.0ftKB

Casing Description	Run Date	OD (in)	Wt/Len (l...	Grade	Top, MD (ft...	MD (ftKB)
Surface	5/12/2005	8 5/8	24.00	J-55	10.0	412.0

Production, 6,725.0ftKB

Casing Description	Run Date	OD (in)	Wt/Len (l...	Grade	Top, MD (ft...	MD (ftKB)
Production	5/17/2005	4 1/2	11.60		10.0	6,725.0

Cement

Description	Top Depth (ftKB)	Bottom Depth (ftKB)
Surface Casing Cement	10.0	412.0
Production Casing Cement	168.0	1,262.0
Production Casing Cement	5,650.0	6,725.0
Cement Squeeze	6,566.0	6,568.0

Tubing Components

Item Des	OD (in)	Wt (lb/ft)	Grade	Jts	Len (ft)	Btm (ftKB)	Btm (TVD) (ftKB)
Tubing	2 3/8			205	6,454.90	6,464.9	
TAC	2 3/8				3.00	6,467.9	
Tubing	2 3/8			5	160.00	6,627.9	
SN	2 3/8				1.10	6,629.0	
Perf Nipple	2 3/8				3.00	6,632.0	

Rods & Pumps

Rod Description	Run Date	Set Depth (ftKB)
Rods	10/10/2006	6,575.0

Comment

Item Description	OD Nominal (in)	Joints	Length (ft)
Polished Rod	1 1/4		16.00
Pony Rod	7/8	1	2.00
Pony Rod	7/8	1	8.00
Sucker Rods	7/8	92	2,300.00
Sucker Rod	3/4	169	4,225.00
2" x 1 1/2" x 16' Conventional Pump	1 1/2		16.00

Perforation Data

Zone	Bnch/St g	Entered Shot Total	Top (ftKB)	Btm (ftKB)	Date
D SAND, Original Hole		24	6,552.00	6,556.00	7/20/2005
D SAND, Original Hole		12	6,566.00	6,568.00	7/8/2005

Well Name: PETERSON 1-35

VERTICAL - Original Hole, 6/4/2014 9:23:19 AM

Stimulations & Treatments

Date 7/29/2005	Zone D SAND, Original Hole	Primary Job Type DRILLING/COMPLETION - ORIGINAL
Technical Result	Tech Result Details	Tech Result Note
Comment		

Other In Hole

Run Date	Des	OD (in)	Top (ftKB)	Btm (ftKB)

Logs

Date	Type	Top, MD (ftKB)	Btm, MD (ftKB)

