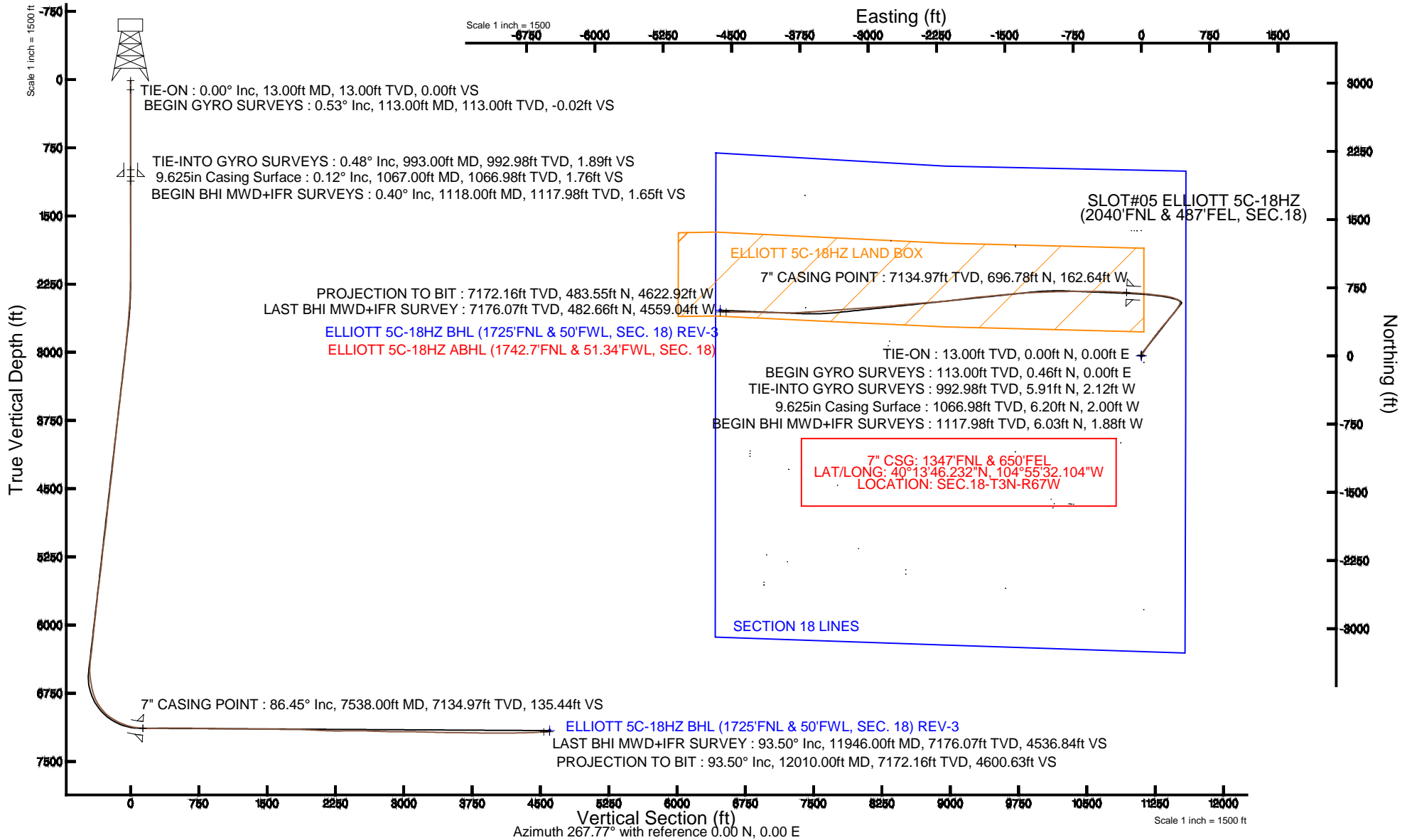


KERR-MCGEE OIL & GAS ONSHORE LP

Location: COLORADO Slot: SLOT#05 ELLIOTT 5C-18HZ (2040'FNL & 487'FEL, SEC.18)
 Field: WELD COUNTY (KERR MCGEE) Well: ELLIOTT 5C-18HZ
 Facility: SEC.18-T3N-R67W Wellbore: ELLIOTT 5C-18HZ PWB

Plot reference wellpath is ELLIOTT 5C-18HZ (REV-B.0) PWB

True vertical depths are referenced to ENSIGN 138 (RKB)	Grid System: NAD83 / Lambert Colorado SP, Northern Zone (501), US feet
Measured depths are referenced to ENSIGN 138 (RKB)	North Reference: True north
ENSIGN 138 (RKB) to Mean Sea Level: 4835 feet	Scale: True distance
Mean Sea Level to Mud line (At Slot: SLOT#05 ELLIOTT 5C-18HZ (2040'FNL & 487'FEL, SEC.18)): 0 feet	Depths are in feet
Coordinates are in feet referenced to Slot	Created by: wilsjef02 on 4/30/2014





Actual Wellpath Report

ELLIOTT 5C-18HZ AWP

Page 1 of 6



REFERENCE WELLPATH IDENTIFICATION

Operator	KERR-MCGEE OIL & GAS ONSHORE LP	Slot	SLOT#05 ELLIOTT 5C-18HZ (2040'FNL & 487'FEL, SEC.18)
Area	COLORADO	Well	ELLIOTT 5C-18HZ
Field	WELD COUNTY (KERR MCGEE)	Wellbore	ELLIOTT 5C-18HZ AWB
Facility	SEC.18-T3N-R67W		

REPORT SETUP INFORMATION

Projection System	NAD83 / Lambert Colorado SP, Northern Zone (501), US feet	Software System	WellArchitect® 4.0.0
North Reference	True	User	Wilsjef02
Scale	0.999957	Report Generated	4/30/2014 at 2:12:43 PM
Convergence at slot	n/a	Database/Source file	WellArchitectDB/ELLIOTT_5C-18HZ_AWB.xml

WELLPATH LOCATION

	Local coordinates		Grid coordinates		Geographic coordinates	
	North[ft]	East[ft]	Easting[US ft]	Northing[US ft]	Latitude	Longitude
Slot Location	-172.48	2763.85	3160549.04	1326275.81	40°13'39.346"N	104°55'30.007"W
Facility Reference Pt			3157784.27	1326430.67	40°13'41.052"N	104°56'05.640"W
Field Reference Pt			3197771.84	1268891.29	40°04'09.600"N	104°47'36.000"W

WELLPATH DATUM

Calculation method	Minimum curvature	ENSIGN 138 (RKB) to Installation Vertical Datum	4835.00ft
Horizontal Reference Pt	Slot	ENSIGN 138 (RKB) to Mean Sea Level	4835.00ft
Vertical Reference Pt	ENSIGN 138 (RKB)	ENSIGN 138 (RKB) to Mud Line at Slot (SLOT#05 ELLIOTT 5C-18HZ (2040'FNL & 487'FEL, SEC.18))	4835.00ft
MD Reference Pt	ENSIGN 138 (RKB)	Section Origin	N 0.00, E 0.00 ft
Field Vertical Reference	Mean Sea Level	Section Azimuth	275.97°



Actual Wellpath Report

ELLIOTT 5C-18HZ AWP

Page 2 of 6



REFERENCE WELLPATH IDENTIFICATION

Operator	KERR-MCGEE OIL & GAS ONSHORE LP	Slot	SLOT#05 ELLIOTT 5C-18HZ (2040'FNL & 487'FEL, SEC.18)
Area	COLORADO	Well	ELLIOTT 5C-18HZ
Field	WELD COUNTY (KERR MCGEE)	Wellbore	ELLIOTT 5C-18HZ AWP
Facility	SEC.18-T3N-R67W		

WELLPATH DATA (126 stations) † = interpolated/extrapolated station

MD [ft]	Inclination [°]	Azimuth [°]	TVD [ft]	Vert Sect [ft]	North [ft]	East [ft]	Latitude	Longitude	DLS [°/100ft]	Comments
0.00†	0.000	0.010	0.00	0.00	0.00	0.00	40°13'39.346"N	104°55'30.007"W	0.00	
13.00	0.000	0.010	13.00	0.00	0.00	0.00	40°13'39.346"N	104°55'30.007"W	0.00	TIE-ON
113.00	0.530	0.010	113.00	0.05	0.46	0.00	40°13'39.351"N	104°55'30.007"W	0.53	BEGIN GYRO SURVEYS
213.00	0.440	353.390	212.99	0.18	1.31	-0.04	40°13'39.359"N	104°55'30.008"W	0.11	
313.00	0.340	342.370	312.99	0.38	1.97	-0.18	40°13'39.365"N	104°55'30.009"W	0.12	
413.00	0.330	323.060	412.99	0.70	2.48	-0.44	40°13'39.371"N	104°55'30.013"W	0.11	
513.00	0.580	324.840	512.99	1.23	3.13	-0.91	40°13'39.377"N	104°55'30.019"W	0.25	
613.00	0.440	348.490	612.98	1.67	3.92	-1.27	40°13'39.385"N	104°55'30.023"W	0.25	
713.00	0.340	337.160	712.98	1.93	4.57	-1.47	40°13'39.391"N	104°55'30.026"W	0.13	
813.00	0.320	299.790	812.98	2.33	4.98	-1.82	40°13'39.395"N	104°55'30.031"W	0.21	
913.00	0.300	348.390	912.98	2.67	5.37	-2.12	40°13'39.399"N	104°55'30.034"W	0.26	
993.00	0.480	7.250	992.98	2.72	5.91	-2.12	40°13'39.404"N	104°55'30.034"W	0.27	TIE-INTO GYRO SURVEYS
1118.00	0.400	157.100	1117.98	2.50	6.03	-1.88	40°13'39.406"N	104°55'30.031"W	0.68	BEGIN BHI MWD+IFR SURVEYS
1589.00	0.300	217.400	1588.97	2.35	3.54	-1.99	40°13'39.381"N	104°55'30.033"W	0.08	
2047.00	0.800	26.600	2046.96	1.85	5.44	-1.29	40°13'39.400"N	104°55'30.024"W	0.24	
2138.00	0.800	24.000	2137.95	1.43	6.59	-0.74	40°13'39.411"N	104°55'30.017"W	0.04	
2230.00	2.200	27.900	2229.91	0.57	8.74	0.34	40°13'39.432"N	104°55'30.003"W	1.52	
2322.00	3.300	27.300	2321.81	-1.05	12.65	2.38	40°13'39.471"N	104°55'29.976"W	1.20	
2414.00	4.600	39.200	2413.59	-4.04	17.86	5.93	40°13'39.523"N	104°55'29.931"W	1.66	
2505.00	6.200	45.500	2504.18	-9.17	24.14	11.74	40°13'39.585"N	104°55'29.856"W	1.87	
2597.00	7.200	35.700	2595.56	-15.19	32.30	18.65	40°13'39.665"N	104°55'29.767"W	1.65	
2688.00	7.900	38.600	2685.77	-21.39	41.82	25.88	40°13'39.759"N	104°55'29.673"W	0.88	
2780.00	9.500	32.800	2776.71	-28.22	53.14	33.94	40°13'39.871"N	104°55'29.569"W	1.98	
2870.00	10.500	31.100	2865.34	-35.06	66.41	42.20	40°13'40.002"N	104°55'29.463"W	1.16	
2962.00	8.900	30.000	2956.02	-41.52	79.75	50.09	40°13'40.134"N	104°55'29.361"W	1.75	
3053.00	10.300	31.300	3045.74	-47.86	92.80	57.83	40°13'40.263"N	104°55'29.261"W	1.56	
3145.00	9.800	35.000	3136.33	-55.18	106.24	66.60	40°13'40.396"N	104°55'29.148"W	0.89	
3236.00	10.900	35.200	3225.85	-63.14	119.62	76.00	40°13'40.528"N	104°55'29.027"W	1.21	
3330.00	10.500	38.400	3318.22	-72.07	133.59	86.44	40°13'40.666"N	104°55'28.893"W	0.76	
3425.00	10.900	37.900	3411.56	-81.47	147.46	97.34	40°13'40.803"N	104°55'28.752"W	0.43	
3520.00	9.700	35.400	3505.03	-90.15	161.07	107.49	40°13'40.938"N	104°55'28.621"W	1.35	
3615.00	10.700	38.400	3598.53	-98.81	174.51	117.60	40°13'41.070"N	104°55'28.491"W	1.19	
3710.00	10.800	37.400	3691.86	-108.18	188.49	128.49	40°13'41.209"N	104°55'28.350"W	0.22	
3805.00	10.600	36.300	3785.21	-117.24	202.60	139.07	40°13'41.348"N	104°55'28.214"W	0.30	
3900.00	9.500	35.800	3878.75	-125.55	216.01	148.83	40°13'41.481"N	104°55'28.088"W	1.16	
3994.00	9.200	37.300	3971.50	-133.31	228.27	157.92	40°13'41.602"N	104°55'27.971"W	0.41	
4090.00	10.000	38.300	4066.16	-141.76	240.92	167.73	40°13'41.727"N	104°55'27.844"W	0.85	
4185.00	9.300	36.100	4159.81	-150.02	253.60	177.37	40°13'41.852"N	104°55'27.720"W	0.83	
4280.00	9.700	36.700	4253.51	-157.97	266.22	186.67	40°13'41.977"N	104°55'27.600"W	0.43	
4375.00	10.200	40.700	4347.08	-166.85	279.01	196.94	40°13'42.103"N	104°55'27.468"W	0.90	
4470.00	9.700	38.100	4440.65	-175.90	291.68	207.37	40°13'42.228"N	104°55'27.333"W	0.71	
4660.00	10.200	40.600	4627.80	-193.97	317.05	228.19	40°13'42.479"N	104°55'27.065"W	0.35	
4849.00	8.300	37.400	4814.33	-210.59	340.60	247.37	40°13'42.712"N	104°55'26.818"W	1.04	
4943.00	9.000	42.400	4907.26	-218.50	351.42	256.45	40°13'42.819"N	104°55'26.701"W	1.09	
5038.00	10.200	41.500	5000.93	-227.80	363.21	267.03	40°13'42.935"N	104°55'26.564"W	1.27	



Actual Wellpath Report

ELLIOTT 5C-18HZ AWP

Page 3 of 6



REFERENCE WELLPATH IDENTIFICATION

Operator	KERR-MCGEE OIL & GAS ONSHORE LP	Slot	SLOT#05 ELLIOTT 5C-18HZ (2040'FNL & 487'FEL, SEC.18)
Area	COLORADO	Well	ELLIOTT 5C-18HZ
Field	WELD COUNTY (KERR MCGEE)	Wellbore	ELLIOTT 5C-18HZ AWB
Facility	SEC.18-T3N-R67W		

WELLPATH DATA (126 stations) † = interpolated/extrapolated station

MD [ft]	Inclination [°]	Azimuth [°]	TVD [ft]	Vert Sect [ft]	North [ft]	East [ft]	Latitude	Longitude	DLS [°/100ft]	Comments
5132.00	11.400	40.000	5093.26	-237.83	376.56	278.52	40°13'43.067"N	104°55'26.416"W	1.31	
5321.00	8.700	37.800	5279.35	-255.83	402.17	299.29	40°13'43.320"N	104°55'26.148"W	1.44	
5416.00	9.000	40.100	5373.22	-263.79	413.53	308.48	40°13'43.432"N	104°55'26.030"W	0.49	
5511.00	10.500	44.500	5466.84	-273.35	425.39	319.33	40°13'43.550"N	104°55'25.890"W	1.76	
5700.00	9.400	42.800	5653.00	-293.33	448.99	341.89	40°13'43.783"N	104°55'25.599"W	0.60	
5795.00	9.700	39.700	5746.68	-302.42	460.84	352.28	40°13'43.900"N	104°55'25.465"W	0.63	
5890.00	9.700	33.600	5840.33	-310.58	473.67	361.82	40°13'44.027"N	104°55'25.342"W	1.08	
5985.00	10.600	35.900	5933.84	-318.65	487.41	371.37	40°13'44.163"N	104°55'25.219"W	1.04	
6079.00	9.900	33.500	6026.34	-326.70	501.15	380.90	40°13'44.298"N	104°55'25.096"W	0.87	
6173.00	10.600	31.600	6118.84	-334.17	515.26	389.89	40°13'44.438"N	104°55'24.980"W	0.83	
6268.00	11.500	32.400	6212.08	-342.17	530.69	399.54	40°13'44.590"N	104°55'24.856"W	0.96	
6363.00	11.600	30.800	6305.15	-350.39	546.89	409.51	40°13'44.750"N	104°55'24.727"W	0.35	
6458.00	12.200	30.000	6398.11	-358.49	563.79	419.42	40°13'44.917"N	104°55'24.600"W	0.66	
6552.00	10.900	6.300	6490.26	-362.59	581.24	425.36	40°13'45.090"N	104°55'24.523"W	5.19	
6599.00	13.900	338.000	6536.20	-359.96	590.90	423.73	40°13'45.185"N	104°55'24.544"W	14.22	
6647.00	14.000	328.400	6582.79	-353.72	601.19	418.53	40°13'45.287"N	104°55'24.611"W	4.82	
6741.00	13.200	305.000	6674.22	-337.39	617.05	403.77	40°13'45.444"N	104°55'24.801"W	5.87	
6788.00	15.400	291.500	6719.77	-326.68	622.41	393.56	40°13'45.497"N	104°55'24.933"W	8.47	
6835.00	18.700	289.600	6764.70	-313.34	627.23	380.66	40°13'45.544"N	104°55'25.099"W	7.12	
6882.00	25.200	289.700	6808.27	-296.28	633.14	364.12	40°13'45.603"N	104°55'25.312"W	13.83	
6930.00	31.100	287.200	6850.58	-274.17	640.25	342.64	40°13'45.673"N	104°55'25.589"W	12.53	
6976.00	35.100	283.500	6889.11	-249.40	646.86	318.42	40°13'45.738"N	104°55'25.902"W	9.74	
7025.00	39.600	280.400	6928.05	-219.84	652.97	289.34	40°13'45.799"N	104°55'26.277"W	9.95	
7072.00	45.000	278.400	6962.81	-188.28	658.10	258.14	40°13'45.849"N	104°55'26.679"W	11.84	
7118.00	51.100	277.000	6993.54	-154.10	662.66	224.26	40°13'45.894"N	104°55'27.116"W	13.45	
7165.00	56.100	276.700	7021.42	-116.29	667.17	186.71	40°13'45.939"N	104°55'27.600"W	10.65	
7213.00	60.900	276.400	7046.50	-75.38	671.84	146.06	40°13'45.985"N	104°55'28.124"W	10.01	
7260.00	65.100	276.500	7067.83	-33.51	676.54	104.46	40°13'46.032"N	104°55'28.660"W	8.94	
7307.00	68.000	276.700	7086.53	9.60	681.50	61.63	40°13'46.081"N	104°55'29.212"W	6.18	
7354.00	72.700	274.500	7102.33	53.85	685.80	17.59	40°13'46.123"N	104°55'29.780"W	10.93	
7401.00	75.900	273.300	7115.05	99.06	688.88	-27.54	40°13'46.153"N	104°55'30.362"W	7.24	
7448.00	79.900	273.500	7124.90	144.96	691.60	-73.41	40°13'46.180"N	104°55'30.953"W	8.52	
7492.00	83.900	273.300	7131.10	188.47	694.18	-116.88	40°13'46.206"N	104°55'31.514"W	9.10	
7538.00†	86.448	273.200	7134.97	234.25	696.78	-162.64	40°13'46.232"N	104°55'32.104"W	5.54	7" CASING POINT
7631.00	91.600	273.000	7136.55	327.09	701.81	-255.46	40°13'46.281"N	104°55'33.301"W	5.54	
7726.00	91.800	272.400	7133.73	421.89	706.28	-350.32	40°13'46.325"N	104°55'34.524"W	0.67	
7820.00	89.400	270.700	7132.75	515.59	708.82	-444.27	40°13'46.351"N	104°55'35.735"W	3.13	
7915.00	90.000	270.200	7133.25	610.15	709.57	-539.26	40°13'46.358"N	104°55'36.960"W	0.82	
8009.00	89.600	270.100	7133.58	703.67	709.82	-633.26	40°13'46.360"N	104°55'38.172"W	0.44	
8103.00	88.800	268.700	7134.89	797.04	708.83	-727.24	40°13'46.351"N	104°55'39.383"W	1.72	
8198.00	90.200	269.300	7135.72	891.33	707.17	-822.22	40°13'46.334"N	104°55'40.608"W	1.60	
8292.00	89.500	269.100	7135.96	984.67	705.86	-916.21	40°13'46.321"N	104°55'41.820"W	0.77	
8387.00	87.900	267.600	7138.12	1078.80	703.13	-1011.14	40°13'46.294"N	104°55'43.044"W	2.31	
8482.00	88.600	268.100	7141.02	1172.80	699.57	-1106.03	40°13'46.259"N	104°55'44.267"W	0.91	
8576.00	89.400	267.300	7142.66	1265.81	695.79	-1199.94	40°13'46.221"N	104°55'45.478"W	1.20	

REFERENCE WELLPATH IDENTIFICATION

Operator	KERR-MCGEE OIL & GAS ONSHORE LP	Slot	SLOT#05 ELLIOTT 5C-18HZ (2040'FNL & 487'FEL, SEC.18)
Area	COLORADO	Well	ELLIOTT 5C-18HZ
Field	WELD COUNTY (KERR MCGEE)	Wellbore	ELLIOTT 5C-18HZ AWB
Facility	SEC.18-T3N-R67W		

WELLPATH DATA (126 stations)

MD [ft]	Inclination [°]	Azimuth [°]	TVD [ft]	Vert Sect [ft]	North [ft]	East [ft]	Latitude	Longitude	DLS [°/100ft]	Comments
8672.00	90.400	265.800	7142.83	1360.51	690.02	-1295.76	40°13'46.164"N	104°55'46.713"W	1.88	
8766.00	90.500	265.500	7142.09	1452.99	682.89	-1389.49	40°13'46.094"N	104°55'47.921"W	0.34	
8861.00	88.500	264.900	7142.92	1546.31	674.94	-1484.14	40°13'46.015"N	104°55'49.142"W	2.20	
8956.00	88.700	264.300	7145.24	1639.41	666.00	-1578.69	40°13'45.927"N	104°55'50.361"W	0.67	
9050.00	89.200	264.000	7146.96	1731.40	656.42	-1672.19	40°13'45.832"N	104°55'51.566"W	0.62	
9145.00	90.300	265.300	7147.38	1824.55	647.56	-1766.77	40°13'45.745"N	104°55'52.786"W	1.79	
9240.00	88.600	262.500	7148.29	1917.43	637.47	-1861.21	40°13'45.645"N	104°55'54.003"W	3.45	
9335.00	87.000	263.000	7151.93	2009.84	625.49	-1955.38	40°13'45.526"N	104°55'55.217"W	1.76	
9429.00	87.400	263.000	7156.53	2101.33	614.05	-2048.57	40°13'45.413"N	104°55'56.419"W	0.43	
9523.00	87.300	264.000	7160.87	2193.02	603.42	-2141.86	40°13'45.308"N	104°55'57.622"W	1.07	
9618.00	88.800	265.200	7164.11	2286.09	594.49	-2236.38	40°13'45.220"N	104°55'58.840"W	2.02	
9713.00	90.800	265.700	7164.44	2379.49	586.95	-2331.08	40°13'45.145"N	104°56'00.061"W	2.17	
9807.00	91.100	265.600	7162.88	2471.96	579.82	-2424.79	40°13'45.075"N	104°56'01.270"W	0.34	
9901.00	89.500	264.900	7162.39	2564.31	572.04	-2518.47	40°13'44.998"N	104°56'02.477"W	1.86	
9996.00	88.200	264.800	7164.29	2657.51	563.51	-2613.06	40°13'44.913"N	104°56'03.697"W	1.37	
10091.00	87.800	264.300	7167.61	2750.57	554.49	-2707.58	40°13'44.824"N	104°56'04.915"W	0.67	
10185.00	88.300	264.800	7170.81	2842.65	545.57	-2801.10	40°13'44.736"N	104°56'06.121"W	0.75	
10279.00	89.400	265.100	7172.69	2934.90	537.30	-2894.71	40°13'44.654"N	104°56'07.328"W	1.21	
10372.00	90.000	265.900	7173.18	3026.35	530.00	-2987.42	40°13'44.582"N	104°56'08.523"W	1.08	
10466.00	89.700	266.300	7173.43	3118.96	523.61	-3081.20	40°13'44.518"N	104°56'09.732"W	0.53	
10561.00	88.600	266.000	7174.84	3212.55	517.23	-3175.98	40°13'44.455"N	104°56'10.954"W	1.20	
10656.00	88.900	265.600	7176.91	3306.04	510.28	-3270.70	40°13'44.386"N	104°56'12.175"W	0.53	
10751.00	88.200	265.300	7179.31	3399.41	502.74	-3365.37	40°13'44.312"N	104°56'13.396"W	0.80	
10846.00	88.800	265.700	7181.80	3492.79	495.29	-3460.04	40°13'44.238"N	104°56'14.617"W	0.76	
10941.00	89.800	266.500	7182.96	3586.38	488.83	-3554.81	40°13'44.174"N	104°56'15.838"W	1.35	
11036.00	89.200	265.900	7183.79	3680.00	482.53	-3649.60	40°13'44.112"N	104°56'17.061"W	0.89	
11130.00	89.000	267.300	7185.27	3772.73	476.96	-3743.42	40°13'44.056"N	104°56'18.270"W	1.50	
11225.00	89.200	269.300	7186.76	3866.86	474.14	-3838.36	40°13'44.029"N	104°56'19.494"W	2.12	
11319.00	89.200	270.800	7188.07	3960.35	474.22	-3932.35	40°13'44.029"N	104°56'20.706"W	1.60	
11414.00	89.700	271.100	7188.98	4054.98	475.80	-4027.33	40°13'44.045"N	104°56'21.931"W	0.61	
11508.00	90.500	271.200	7188.82	4148.64	477.69	-4121.31	40°13'44.063"N	104°56'23.142"W	0.86	
11603.00	91.000	270.900	7187.57	4243.29	479.43	-4216.29	40°13'44.080"N	104°56'24.367"W	0.61	
11698.00	91.000	270.200	7185.92	4337.85	480.34	-4311.27	40°13'44.089"N	104°56'25.591"W	0.74	
11792.00	92.000	270.500	7183.46	4431.36	480.91	-4405.23	40°13'44.094"N	104°56'26.803"W	1.11	
11946.00	93.500	270.800	7176.07	4584.52	482.66	-4559.04	40°13'44.111"N	104°56'28.786"W	0.99	LAST BHI MWD+IFR SURVEY
12010.00	93.500	270.800	7172.16	4648.14	483.55	-4622.92	40°13'44.120"N	104°56'29.609"W	0.00	PROJECTION TO BIT



Actual Wellpath Report

ELLIOTT 5C-18HZ AWP

Page 5 of 6



REFERENCE WELLPATH IDENTIFICATION

Operator	KERR-MCGEE OIL & GAS ONSHORE LP	Slot	SLOT#05 ELLIOTT 5C-18HZ (2040'FNL & 487'FEL, SEC.18)
Area	COLORADO	Well	ELLIOTT 5C-18HZ
Field	WELD COUNTY (KERR MCGEE)	Wellbore	ELLIOTT 5C-18HZ AWB
Facility	SEC.18-T3N-R67W		

HOLE & CASING SECTIONS - Ref Wellbore: ELLIOTT 5C-18HZ AWB Ref Wellpath: ELLIOTT 5C-18HZ AWP

String/Diameter	Start MD [ft]	End MD [ft]	Interval [ft]	Start TVD [ft]	End TVD [ft]	Start N/S [ft]	Start E/W [ft]	End N/S [ft]	End E/W [ft]
13.5in Open Hole	13.00	1067.00	1054.00	13.00	1066.98	0.00	0.00	6.20	-2.00
9.625in Casing Surface	13.00	1067.00	1054.00	13.00	1066.98	0.00	0.00	6.20	-2.00
8.75in Open Hole	1067.00	7556.00	6489.00	1066.98	7135.93	6.20	-2.00	697.78	-180.59
7in Casing Intermediate	13.00	7538.00	7525.00	13.00	7134.97	0.00	0.00	696.78	-162.64
6.125in Open Hole	7538.00	12010.00	4472.00	7134.97	7172.16	696.78	-162.64	483.55	-4622.92

TARGETS

Name	MD [ft]	TVD [ft]	North [ft]	East [ft]	Grid East [US ft]	Grid North [US ft]	Latitude	Longitude	Shape
ELLIOTT 5C-18HZ BHL (1725'FNL & 50'FWL, SEC. 18) REV-3		7161.00	501.25	-4624.26	3155921.83	1326747.04	40°13'44.295"N	104°56'29.627"W	point
ELLIOTT 5C-18HZ BHL (1725'FNL & 50'FWL, SEC. 18) REV-2		7190.00	501.25	-4624.26	3155921.83	1326747.04	40°13'44.295"N	104°56'29.627"W	point
ELLIOTT 5C-18HZ BHL ON PLAT (1655'FNL & 50'FWL, SEC. 18) REV-1		7190.00	571.25	-4624.26	3155921.38	1326817.04	40°13'44.987"N	104°56'29.627"W	point
ELLIOTT, KARL UNIT 1 (270' RADIUS)		7190.00	491.82	-926.80	3159619.11	1326761.59	40°13'44.206"N	104°55'41.956"W	circle
ELLIOTT 5C-18HZ LAND BOX		7200.00	0.00	0.00	3160549.04	1326275.81	40°13'39.346"N	104°55'30.007"W	polygon
ELLIOTT, KARL UNIT 1 (500' RADIUS)		7200.00	491.78	-926.77	3159619.14	1326761.55	40°13'44.206"N	104°55'41.956"W	circle
ELLIOTT 5C-18HZ SECTION 18 LINES		7210.00	0.00	0.00	3160549.04	1326275.81	40°13'39.346"N	104°55'30.007"W	polygon

WELLPATH COMPOSITION - Ref Wellbore: ELLIOTT 5C-18HZ AWB Ref Wellpath: ELLIOTT 5C-18HZ AWP

Start MD [ft]	End MD [ft]	Positional Uncertainty Model	Log Name/Comment	Wellbore
13.00	993.00	Generic gyro - continuous (Standard)	MS ENERGY GYRODATA SURVEYS <113-993>	ELLIOTT 5C-18HZ AWB
993.00	7492.00	NaviTrak (IFR)	BHI MWD+IFR SURVEYS <1118-7492>	ELLIOTT 5C-18HZ AWB
7492.00	11946.00	NaviTrak (IFR)	BHI MWD+IFR SURVEYS <7631-11946>	ELLIOTT 5C-18HZ AWB
11946.00	12010.00	Blind Drilling (std)	Projection to bit	ELLIOTT 5C-18HZ AWB



Actual Wellpath Report

ELLIOTT 5C-18HZ AWP

Page 6 of 6



REFERENCE WELLPATH IDENTIFICATION			
Operator	KERR-MCGEE OIL & GAS ONSHORE LP	Slot	SLOT#05 ELLIOTT 5C-18HZ (2040'FNL & 487'FEL, SEC.18)
Area	COLORADO	Well	ELLIOTT 5C-18HZ
Field	WELD COUNTY (KERR MCGEE)	Wellbore	ELLIOTT 5C-18HZ AWP
Facility	SEC.18-T3N-R67W		

WELLPATH COMMENTS				
MD [ft]	Inclination [°]	Azimuth [°]	TVD [ft]	Comment
13.00	0.000	0.010	13.00	TIE-ON
113.00	0.530	0.010	113.00	BEGIN GYRO SURVEYS
993.00	0.480	7.250	992.98	TIE-INTO GYRO SURVEYS
1118.00	0.400	157.100	1117.98	BEGIN BHI MWD+IFR SURVEYS
7538.00	86.448	273.200	7134.97	7" CASING POINT
11946.00	93.500	270.800	7176.07	LAST BHI MWD+IFR SURVEY
12010.00	93.500	270.800	7172.16	PROJECTION TO BIT