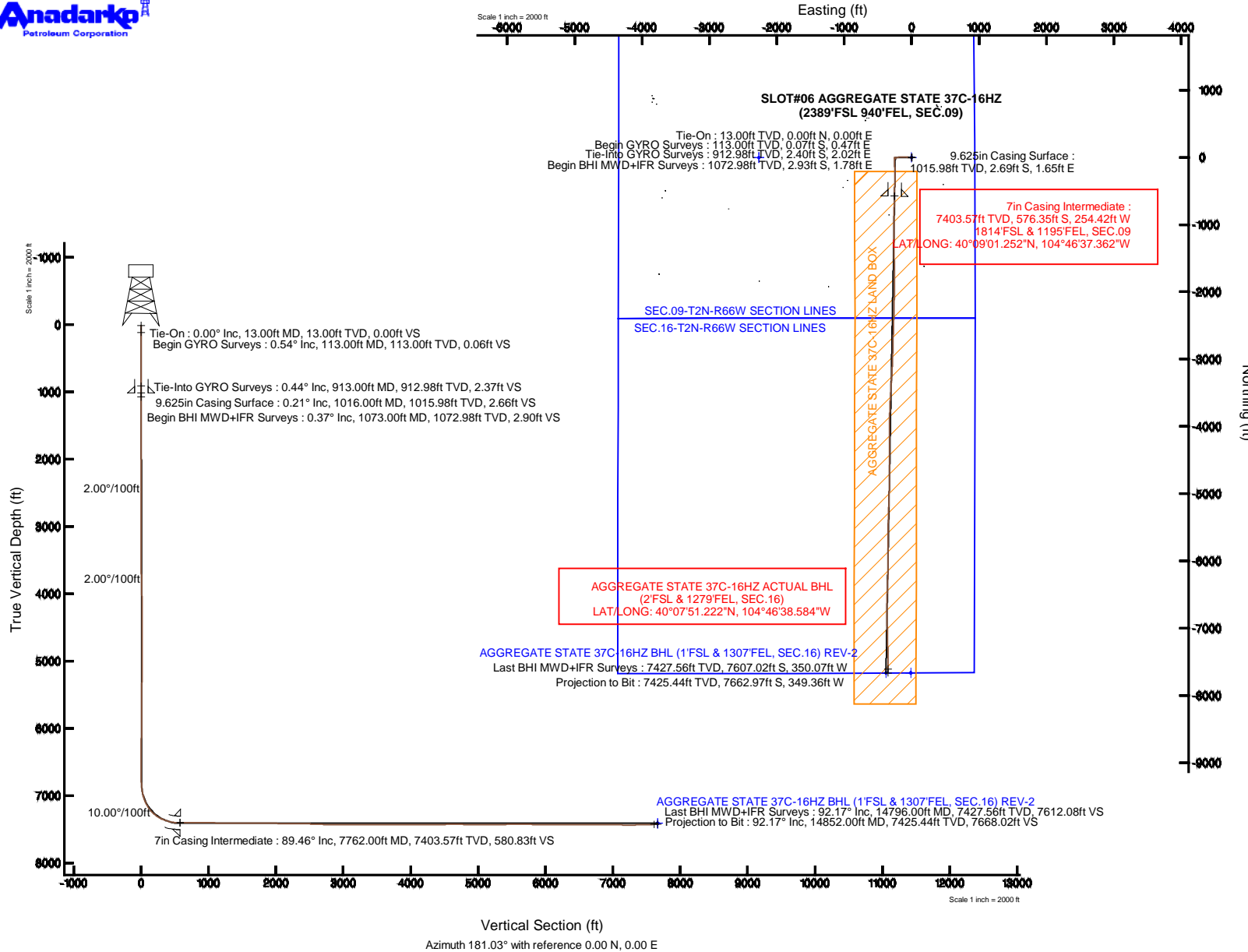


KERR-MCGEE OIL & GAS ONSHORE LP

Location: COLORADO Slot: SLOT#06 AGGREGATE STATE 37C-16HZ (2389'FSL 940'FEL, SEC.09)
 Field: WELD COUNTY (KERR MCGEE) Well: AGGREGATE STATE 37C-16HZ
 Facility: SEC.09-T2N-R66W Wellbore: AGGREGATE STATE 37C-16HZ PWB

Plot reference wellpath is AGGREGATE STATE 37C-16HZ (REV-A.0) PWP

True vertical depths are referenced to ENSIGN 145 (13KB) (RKB)	Grid System: NAD83 / Lambert Colorado SP, Northern Zone (501), US feet
Measured depths are referenced to ENSIGN 145 (13KB) (RKB)	North Reference: True north
ENSGN 145 (13KB) (RKB) to Mean Sea Level: 4937 feet	Scale: True distance
Mean Sea Level to Mud line (At Slot: SLOT#06 AGGREGATE STATE 37C-16HZ (2389'FSL 940'FEL, SEC.09)): 0 feet	Depths are in feet
Coordinates are in feet referenced to Slot	Created by: precin on 22/May/2014



REFERENCE WELLPATH IDENTIFICATION			
Operator	KERR-MCGEE OIL & GAS ONSHORE LP	Slot	SLOT#06 AGGREGATE STATE 37C-16HZ (2389'FSL 940'FEL, SEC.09)
Area	COLORADO	Well	AGGREGATE STATE 37C-16HZ
Field	WELD COUNTY (KERR MCGEE)	Wellbore	AGGREGATE STATE 37C-16HZ AWB
Facility	SEC.09-T2N-R66W		

REPORT SETUP INFORMATION			
Projection System	NAD83 / Lambert Colorado SP, Northern Zone (501), US feet	Software System	WellArchitect@ 4.0.0
North Reference	True	User	Precain
Scale	0.999958	Report Generated	22/May/2014 at 11:07
Convergence at slot	n/a	Database/Source file	WellArchitectDB/AGGREGATE_STATE_37C-16HZ_AWB.xml

WELLPATH LOCATION						
	Local coordinates		Grid coordinates		Geographic coordinates	
	North[ft]	East[ft]	Easting[US ft]	Northing[US ft]	Latitude	Longitude
Slot Location	-768.66	-373.19	3202339.35	1299017.30	40°09'06.948"N	104°46'34.086"W
Facility Reference Pt			3202706.22	1299788.95	40°09'14.544"N	104°46'29.280"W
Field Reference Pt			3197771.84	1268891.29	40°04'09.600"N	104°47'36.000"W

WELLPATH DATUM			
Calculation method	Minimum curvature	ENSIGN 145 (13'KB) (RKB) to Facility Vertical Datum	4937.00ft
Horizontal Reference Pt	Slot	ENSIGN 145 (13'KB) (RKB) to Mean Sea Level	4937.00ft
Vertical Reference Pt	ENSIGN 145 (13'KB) (RKB)	ENSIGN 145 (13'KB) (RKB) to Mud Line at Slot (SLOT#06 AGGREGATE STATE 37C-16HZ (2389'FSL 940'FEL, SEC.09))	4937.00ft
MD Reference Pt	ENSIGN 145 (13'KB) (RKB)	Section Origin	N 0.00, E 0.00 ft
Field Vertical Reference	Mean Sea Level	Section Azimuth	181.03°

REFERENCE WELLPATH IDENTIFICATION			
Operator	KERR-MCGEE OIL & GAS ONSHORE LP	Slot	SLOT#06 AGGREGATE STATE 37C-16HZ (2389'FSL 940'FEL, SEC.09)
Area	COLORADO	Well	AGGREGATE STATE 37C-16HZ
Field	WELD COUNTY (KERR MCGEE)	Wellbore	AGGREGATE STATE 37C-16HZ AWB
Facility	SEC.09-T2N-R66W		

WELLPATH DATA (155 stations) † = interpolated/extrapolated station										
MD [ft]	Inclination [°]	Azimuth [°]	TVD [ft]	Vert Sect [ft]	North [ft]	East [ft]	Latitude	Longitude	DLS [°/100ft]	Comments
0.00†	0.000	98.070	0.00	0.00	0.00	0.00	40°09'06.948"N	104°46'34.086"W	0.00	
13.00	0.000	98.070	13.00	0.00	0.00	0.00	40°09'06.948"N	104°46'34.086"W	0.00	Tie-On
113.00	0.540	98.070	113.00	0.06	-0.07	0.47	40°09'06.947"N	104°46'34.080"W	0.54	Begin GYRO Surveys
213.00	0.490	127.440	212.99	0.37	-0.39	1.27	40°09'06.944"N	104°46'34.070"W	0.27	
313.00	0.440	128.780	312.99	0.86	-0.89	1.91	40°09'06.939"N	104°46'34.061"W	0.05	
413.00	0.360	155.720	412.99	1.38	-1.42	2.34	40°09'06.934"N	104°46'34.056"W	0.20	
513.00	0.260	239.780	512.99	1.78	-1.82	2.27	40°09'06.930"N	104°46'34.057"W	0.42	
613.00	0.420	71.260	612.99	1.77	-1.82	2.42	40°09'06.930"N	104°46'34.055"W	0.68	
713.00	0.320	125.960	712.99	1.81	-1.86	3.00	40°09'06.930"N	104°46'34.047"W	0.35	
813.00	0.500	251.370	812.98	2.12	-2.17	2.81	40°09'06.927"N	104°46'34.050"W	0.73	
913.00	0.440	255.460	912.98	2.37	-2.40	2.02	40°09'06.924"N	104°46'34.060"W	0.07	Tie-Into GYRO Surveys
1073.00	0.370	137.130	1072.98	2.90	-2.93	1.78	40°09'06.919"N	104°46'34.063"W	0.44	Begin BHI MWD+IFR Surveys
1167.00	0.290	126.560	1166.98	3.26	-3.30	2.18	40°09'06.915"N	104°46'34.058"W	0.11	
1354.00	0.170	109.570	1353.98	3.62	-3.67	2.82	40°09'06.912"N	104°46'34.050"W	0.07	
1541.00	0.200	113.060	1540.97	3.83	-3.89	3.38	40°09'06.910"N	104°46'34.042"W	0.02	
1728.00	0.370	339.090	1727.97	3.40	-3.46	3.47	40°09'06.914"N	104°46'34.041"W	0.28	
1915.00	0.480	346.080	1914.97	2.08	-2.13	3.06	40°09'06.927"N	104°46'34.047"W	0.06	
2102.00	0.350	314.150	2101.96	0.93	-0.98	2.46	40°09'06.938"N	104°46'34.054"W	0.14	
2195.00	0.810	235.080	2194.96	1.12	-1.15	1.72	40°09'06.937"N	104°46'34.064"W	0.88	
2289.00	1.790	283.030	2288.94	1.21	-1.20	-0.25	40°09'06.936"N	104°46'34.089"W	1.47	
2382.00	3.490	270.510	2381.84	0.93	-0.85	-4.50	40°09'06.940"N	104°46'34.144"W	1.92	
2476.00	4.560	269.260	2475.60	1.07	-0.87	-11.10	40°09'06.939"N	104°46'34.229"W	1.14	
2569.00	5.810	274.570	2568.22	0.90	-0.55	-19.49	40°09'06.943"N	104°46'34.337"W	1.44	
2663.00	6.950	271.120	2661.64	0.59	-0.06	-29.91	40°09'06.947"N	104°46'34.471"W	1.28	
2753.00	8.890	273.230	2750.77	0.32	0.44	-42.30	40°09'06.952"N	104°46'34.631"W	2.18	
2843.00	10.990	273.780	2839.42	-0.36	1.40	-57.81	40°09'06.962"N	104°46'34.830"W	2.34	
2933.00	12.090	270.010	2927.60	-0.60	1.97	-75.79	40°09'06.967"N	104°46'35.062"W	1.48	
3023.00	11.280	269.960	3015.73	-0.27	1.96	-94.02	40°09'06.967"N	104°46'35.297"W	0.90	
3113.00	11.550	269.630	3103.95	0.11	1.90	-111.83	40°09'06.967"N	104°46'35.526"W	0.31	
3202.00	10.170	270.130	3191.36	0.45	1.86	-128.60	40°09'06.966"N	104°46'35.742"W	1.55	
3292.00	9.760	277.940	3280.00	-0.34	2.93	-144.10	40°09'06.977"N	104°46'35.942"W	1.57	
3382.00	9.550	273.810	3368.73	-1.62	4.48	-159.11	40°09'06.992"N	104°46'36.135"W	0.80	
3472.00	9.220	268.100	3457.53	-1.61	4.74	-173.76	40°09'06.995"N	104°46'36.324"W	1.10	
3562.00	7.590	263.720	3546.56	-0.49	3.85	-186.88	40°09'06.986"N	104°46'36.493"W	1.94	
3652.00	7.480	255.020	3635.78	1.88	1.68	-198.45	40°09'06.965"N	104°46'36.642"W	1.27	
3742.00	6.150	252.660	3725.15	5.02	-1.27	-208.71	40°09'06.935"N	104°46'36.774"W	1.51	
3832.00	5.490	257.740	3814.68	7.53	-3.62	-217.52	40°09'06.912"N	104°46'36.887"W	0.93	
3922.00	4.790	257.240	3904.32	9.41	-5.36	-225.39	40°09'06.895"N	104°46'36.989"W	0.78	
4012.00	4.090	253.270	3994.05	11.29	-7.12	-232.13	40°09'06.878"N	104°46'37.075"W	0.85	
4102.00	3.120	262.090	4083.87	12.65	-8.38	-237.63	40°09'06.865"N	104°46'37.146"W	1.24	
4192.00	1.400	253.730	4173.80	13.36	-9.02	-241.11	40°09'06.859"N	104°46'37.191"W	1.94	
4283.00	0.400	174.210	4264.79	14.00	-9.65	-242.14	40°09'06.853"N	104°46'37.204"W	1.52	
4643.00	0.900	208.280	4624.76	17.76	-13.39	-243.36	40°09'06.816"N	104°46'37.220"W	0.17	
4733.00	0.700	301.050	4714.76	18.12	-13.73	-244.16	40°09'06.812"N	104°46'37.230"W	1.30	
5093.00	1.190	311.610	5074.71	14.58	-10.11	-248.84	40°09'06.848"N	104°46'37.291"W	0.14	

REFERENCE WELLPATH IDENTIFICATION			
Operator	KERR-MCGEE OIL & GAS ONSHORE LP	Slot	SLOT#06 AGGREGATE STATE 37C-16HZ (2389'FSL 940'FEL, SEC.09)
Area	COLORADO	Well	AGGREGATE STATE 37C-16HZ
Field	WELD COUNTY (KERR MCGEE)	Wellbore	AGGREGATE STATE 37C-16HZ AWB
Facility	SEC.09-T2N-R66W		

WELLPATH DATA (155 stations) † = interpolated/extrapolated station										
MD [ft]	Inclination [°]	Azimuth [°]	TVD [ft]	Vert Sect [ft]	North [ft]	East [ft]	Latitude	Longitude	DLS [°/100ft]	Comments
5183.00	0.650	31.900	5164.70	13.54	-9.06	-249.27	40°09'06.858"N	104°46'37.296"W	1.40	
5543.00	0.760	49.150	5524.67	10.19	-5.76	-246.39	40°09'06.891"N	104°46'37.259"W	0.07	
5903.00	0.840	0.390	5884.64	5.96	-1.56	-244.56	40°09'06.933"N	104°46'37.236"W	0.18	
5993.00	0.950	259.700	5974.63	5.45	-1.04	-245.29	40°09'06.938"N	104°46'37.245"W	1.53	
6084.00	0.800	294.470	6065.62	5.34	-0.91	-246.61	40°09'06.939"N	104°46'37.262"W	0.60	
6174.00	0.820	12.190	6155.62	4.46	-0.02	-247.05	40°09'06.948"N	104°46'37.268"W	1.13	
6264.00	0.120	28.620	6245.61	3.74	0.69	-246.87	40°09'06.955"N	104°46'37.265"W	0.78	
6624.00	0.530	254.480	6605.61	3.88	0.58	-248.29	40°09'06.954"N	104°46'37.284"W	0.17	
6774.00	1.240	266.690	6755.59	4.21	0.30	-250.58	40°09'06.951"N	104°46'37.313"W	0.49	
6849.00	2.320	216.280	6830.56	5.51	-0.97	-252.29	40°09'06.938"N	104°46'37.335"W	2.40	
6894.00	5.510	186.840	6875.45	8.40	-3.85	-253.09	40°09'06.910"N	104°46'37.345"W	8.16	
6939.00	9.340	183.870	6920.06	14.20	-9.64	-253.59	40°09'06.853"N	104°46'37.352"W	8.55	
6984.00	12.280	185.230	6964.26	22.62	-18.05	-254.27	40°09'06.770"N	104°46'37.361"W	6.56	
7029.00	15.980	184.930	7007.89	33.58	-28.99	-255.24	40°09'06.661"N	104°46'37.373"W	8.22	
7075.00	19.500	182.240	7051.70	47.57	-42.98	-256.09	40°09'06.523"N	104°46'37.384"W	7.85	
7120.00	23.380	178.130	7093.58	64.01	-59.41	-256.09	40°09'06.361"N	104°46'37.384"W	9.24	
7165.00	27.380	178.010	7134.23	83.27	-78.69	-255.44	40°09'06.170"N	104°46'37.376"W	8.89	
7210.00	32.950	176.760	7173.12	105.82	-101.27	-254.38	40°09'05.947"N	104°46'37.362"W	12.46	
7255.00	38.440	176.030	7209.65	131.98	-127.46	-252.72	40°09'05.688"N	104°46'37.341"W	12.24	
7300.00	43.940	175.300	7243.50	161.47	-157.00	-250.47	40°09'05.397"N	104°46'37.312"W	12.27	
7345.00	49.510	175.470	7274.34	194.06	-189.64	-247.84	40°09'05.074"N	104°46'37.278"W	12.38	
7390.00	54.360	177.630	7302.08	229.37	-224.99	-245.73	40°09'04.725"N	104°46'37.251"W	11.42	
7435.00	59.870	180.420	7326.50	267.12	-262.76	-245.12	40°09'04.351"N	104°46'37.243"W	13.30	
7480.00	64.990	183.300	7347.33	306.99	-302.60	-246.44	40°09'03.958"N	104°46'37.260"W	12.71	
7525.00	69.690	182.380	7364.66	348.48	-344.07	-248.49	40°09'03.548"N	104°46'37.286"W	10.61	
7570.00	73.880	181.230	7378.72	391.21	-386.78	-249.83	40°09'03.126"N	104°46'37.303"W	9.62	
7615.00	77.550	181.710	7389.83	434.81	-430.37	-250.95	40°09'02.695"N	104°46'37.318"W	8.22	
7660.00	82.040	181.420	7397.80	479.08	-474.63	-252.16	40°09'02.258"N	104°46'37.333"W	10.00	
7705.00	86.720	181.310	7402.20	523.86	-519.39	-253.22	40°09'01.815"N	104°46'37.347"W	10.40	
7722.00	88.610	181.150	7402.89	540.84	-536.37	-253.59	40°09'01.648"N	104°46'37.352"W	11.16	
7762.00†	89.456	181.224	7403.57	580.83	-576.35	-254.42	40°09'01.252"N	104°46'37.362"W	2.12	7" Casing Point
7792.00	90.090	181.280	7403.69	610.83	-606.35	-255.07	40°09'00.956"N	104°46'37.371"W	2.12	
7854.00	90.090	181.590	7403.59	672.83	-668.33	-256.62	40°09'00.344"N	104°46'37.391"W	0.50	
7948.00	89.750	181.700	7403.72	766.83	-762.29	-259.32	40°08'59.415"N	104°46'37.426"W	0.38	
8041.00	89.750	180.590	7404.13	859.82	-855.27	-261.18	40°08'58.496"N	104°46'37.449"W	1.19	
8135.00	90.400	180.710	7404.00	953.82	-949.26	-262.25	40°08'57.567"N	104°46'37.463"W	0.70	
8228.00	88.850	180.180	7404.61	1046.81	-1042.25	-262.97	40°08'56.648"N	104°46'37.472"W	1.76	
8322.00	88.820	179.720	7406.52	1140.77	-1136.23	-262.89	40°08'55.720"N	104°46'37.471"W	0.49	
8415.00	89.160	179.440	7408.16	1233.73	-1229.22	-262.21	40°08'54.801"N	104°46'37.463"W	0.47	
8509.00	89.930	179.600	7408.91	1327.69	-1323.21	-261.42	40°08'53.872"N	104°46'37.452"W	0.84	
8602.00	90.890	179.060	7408.24	1420.65	-1416.20	-260.33	40°08'52.953"N	104°46'37.438"W	1.18	
8696.00	89.930	178.990	7407.57	1514.59	-1510.18	-258.73	40°08'52.024"N	104°46'37.418"W	1.02	
8789.00	89.380	179.570	7408.13	1607.54	-1603.17	-257.56	40°08'51.105"N	104°46'37.403"W	0.86	
8882.00	89.590	178.770	7408.97	1700.49	-1696.16	-256.22	40°08'50.186"N	104°46'37.385"W	0.89	
8975.00	89.280	180.250	7409.89	1793.45	-1789.15	-255.42	40°08'49.268"N	104°46'37.375"W	1.63	

REFERENCE WELLPATH IDENTIFICATION			
Operator	KERR-MCGEE OIL & GAS ONSHORE LP	Slot	SLOT#06 AGGREGATE STATE 37C-16HZ (2389'FSL 940'FEL, SEC.09)
Area	COLORADO	Well	AGGREGATE STATE 37C-16HZ
Field	WELD COUNTY (KERR MCGEE)	Wellbore	AGGREGATE STATE 37C-16HZ AWB
Facility	SEC.09-T2N-R66W		

WELLPATH DATA (155 stations)

MD [ft]	Inclination [°]	Azimuth [°]	TVD [ft]	Vert Sect [ft]	North [ft]	East [ft]	Latitude	Longitude	DLS [°/100ft]	Comments
9069.00	88.980	180.270	7411.31	1887.43	-1883.13	-255.85	40°08'48.339"N	104°46'37.381"W	0.32	
9159.00	89.280	180.670	7412.68	1977.41	-1973.12	-256.58	40°08'47.449"N	104°46'37.390"W	0.56	
9249.00	89.530	180.680	7413.61	2067.41	-2063.11	-257.64	40°08'46.560"N	104°46'37.404"W	0.28	
9339.00	89.040	181.270	7414.74	2157.40	-2153.09	-259.18	40°08'45.671"N	104°46'37.423"W	0.85	
9429.00	89.350	181.620	7416.00	2247.39	-2243.05	-261.45	40°08'44.782"N	104°46'37.453"W	0.52	
9519.00	88.880	181.420	7417.39	2337.37	-2333.01	-263.83	40°08'43.893"N	104°46'37.483"W	0.57	
9609.00	89.010	181.900	7419.05	2427.35	-2422.96	-266.44	40°08'43.004"N	104°46'37.517"W	0.55	
9699.00	89.040	182.350	7420.58	2517.32	-2512.88	-269.78	40°08'42.116"N	104°46'37.560"W	0.50	
9789.00	87.070	181.370	7423.63	2607.26	-2602.78	-272.70	40°08'41.227"N	104°46'37.597"W	2.44	
9878.00	87.400	181.230	7427.93	2696.15	-2691.65	-274.71	40°08'40.349"N	104°46'37.623"W	0.40	
9968.00	88.450	181.620	7431.19	2786.09	-2781.56	-276.95	40°08'39.460"N	104°46'37.652"W	1.24	
10058.00	90.430	181.540	7432.07	2876.08	-2871.52	-279.43	40°08'38.571"N	104°46'37.684"W	2.20	
10148.00	90.610	182.000	7431.25	2966.06	-2961.47	-282.21	40°08'37.683"N	104°46'37.720"W	0.55	
10238.00	90.330	182.420	7430.51	3056.04	-3051.40	-285.68	40°08'36.794"N	104°46'37.765"W	0.56	
10328.00	90.330	182.340	7429.99	3146.02	-3141.32	-289.42	40°08'35.905"N	104°46'37.813"W	0.09	
10418.00	90.490	183.910	7429.35	3235.95	-3231.18	-294.32	40°08'35.017"N	104°46'37.876"W	1.75	
10508.00	90.210	183.880	7428.80	3325.84	-3320.97	-300.44	40°08'34.130"N	104°46'37.955"W	0.31	
10598.00	90.150	183.330	7428.52	3415.74	-3410.79	-306.10	40°08'33.242"N	104°46'38.027"W	0.61	
10688.00	89.840	183.100	7428.52	3505.68	-3500.65	-311.14	40°08'32.354"N	104°46'38.092"W	0.43	
10778.00	90.030	183.240	7428.63	3595.62	-3590.51	-316.12	40°08'31.466"N	104°46'38.156"W	0.26	
10868.00	90.370	182.360	7428.31	3685.57	-3680.40	-320.52	40°08'30.578"N	104°46'38.213"W	1.05	
10958.00	89.470	182.250	7428.44	3775.55	-3770.33	-324.14	40°08'29.689"N	104°46'38.260"W	1.01	
11048.00	89.440	180.040	7429.29	3865.54	-3860.30	-325.94	40°08'28.800"N	104°46'38.283"W	2.46	
11138.00	89.320	181.240	7430.27	3955.53	-3950.29	-326.94	40°08'27.911"N	104°46'38.296"W	1.34	
11228.00	89.440	180.650	7431.24	4045.52	-4040.27	-328.42	40°08'27.022"N	104°46'38.315"W	0.67	
11318.00	90.670	180.420	7431.15	4135.52	-4130.27	-329.26	40°08'26.132"N	104°46'38.326"W	1.39	
11408.00	89.500	180.210	7431.02	4225.51	-4220.26	-329.76	40°08'25.243"N	104°46'38.332"W	1.32	
11498.00	90.640	179.940	7430.91	4315.50	-4310.26	-329.88	40°08'24.354"N	104°46'38.333"W	1.30	
11588.00	91.070	179.380	7429.57	4405.46	-4400.25	-329.34	40°08'23.464"N	104°46'38.327"W	0.78	
11678.00	90.610	180.110	7428.25	4495.43	-4490.24	-328.94	40°08'22.575"N	104°46'38.321"W	0.96	
11768.00	91.130	179.860	7426.88	4585.40	-4580.23	-328.92	40°08'21.686"N	104°46'38.321"W	0.64	
11858.00	89.500	179.640	7426.39	4675.37	-4670.22	-328.53	40°08'20.797"N	104°46'38.316"W	1.83	
11948.00	89.010	180.130	7427.56	4765.35	-4760.21	-328.35	40°08'19.907"N	104°46'38.314"W	0.77	
12038.00	88.920	180.960	7429.18	4855.33	-4850.19	-329.20	40°08'19.018"N	104°46'38.325"W	0.93	
12144.00	90.060	182.630	7430.13	4961.31	-4956.13	-332.52	40°08'17.971"N	104°46'38.367"W	1.91	
12218.00	89.660	182.260	7430.31	5035.29	-5030.07	-335.68	40°08'17.241"N	104°46'38.408"W	0.74	
12308.00	89.840	181.060	7430.70	5125.28	-5120.02	-338.29	40°08'16.352"N	104°46'38.442"W	1.35	
12398.00	90.300	182.070	7430.59	5215.27	-5209.99	-340.74	40°08'15.462"N	104°46'38.473"W	1.23	
12488.00	89.960	181.230	7430.39	5305.27	-5299.95	-343.34	40°08'14.573"N	104°46'38.507"W	1.01	
12578.00	91.840	181.880	7428.97	5395.25	-5389.90	-345.78	40°08'13.685"N	104°46'38.538"W	2.21	
12668.00	91.570	182.100	7426.30	5485.19	-5479.81	-348.90	40°08'12.796"N	104°46'38.578"W	0.39	
12758.00	90.900	181.660	7424.36	5575.16	-5569.74	-351.85	40°08'11.907"N	104°46'38.616"W	0.89	
12938.00	87.720	179.070	7426.52	5755.10	-5749.68	-353.00	40°08'10.129"N	104°46'38.631"W	2.28	
13028.00	89.100	179.330	7429.02	5845.02	-5839.64	-351.74	40°08'09.240"N	104°46'38.615"W	1.56	
13118.00	90.310	179.450	7429.48	5934.98	-5929.63	-350.79	40°08'08.351"N	104°46'38.602"W	1.35	

REFERENCE WELLPATH IDENTIFICATION			
Operator	KERR-MCGEE OIL & GAS ONSHORE LP	Slot	SLOT#06 AGGREGATE STATE 37C-16HZ (2389'FSL 940'FEL, SEC.09)
Area	COLORADO	Well	AGGREGATE STATE 37C-16HZ
Field	WELD COUNTY (KERR MCGEE)	Wellbore	AGGREGATE STATE 37C-16HZ AWB
Facility	SEC.09-T2N-R66W		

WELLPATH DATA (155 stations)										
MD [ft]	Inclination [°]	Azimuth [°]	TVD [ft]	Vert Sect [ft]	North [ft]	East [ft]	Latitude	Longitude	DLS [°/100ft]	Comments
13208.00	89.470	180.210	7429.66	6024.96	-6019.63	-350.52	40°08'07.462"N	104°46'38.599"W	1.26	
13298.00	90.060	180.340	7430.03	6114.95	-6109.63	-350.95	40°08'06.572"N	104°46'38.605"W	0.67	
13388.00	90.000	181.520	7429.98	6204.95	-6199.61	-352.41	40°08'05.683"N	104°46'38.623"W	1.31	
13478.00	90.150	181.890	7429.86	6294.94	-6289.57	-355.09	40°08'04.794"N	104°46'38.658"W	0.44	
13568.00	89.870	182.160	7429.85	6384.92	-6379.52	-358.27	40°08'03.905"N	104°46'38.699"W	0.43	
13658.00	89.870	182.240	7430.05	6474.91	-6469.45	-361.73	40°08'03.016"N	104°46'38.743"W	0.09	
13748.00	90.980	180.930	7429.38	6564.90	-6559.41	-364.21	40°08'02.127"N	104°46'38.775"W	1.91	
13838.00	89.320	179.980	7429.15	6654.89	-6649.40	-364.93	40°08'01.238"N	104°46'38.784"W	2.13	
13928.00	89.690	179.830	7429.92	6744.87	-6739.40	-364.78	40°08'00.349"N	104°46'38.782"W	0.44	
14018.00	90.610	180.040	7429.69	6834.85	-6829.40	-364.68	40°07'59.459"N	104°46'38.781"W	1.05	
14108.00	88.150	178.630	7430.66	6924.79	-6919.38	-363.63	40°07'58.570"N	104°46'38.768"W	3.15	
14198.00	88.760	178.490	7433.09	7014.68	-7009.31	-361.37	40°07'57.681"N	104°46'38.739"W	0.70	
14298.00	88.940	178.500	7435.10	7114.56	-7109.26	-358.75	40°07'56.694"N	104°46'38.705"W	0.18	
14388.00	89.290	178.470	7436.49	7204.46	-7199.22	-356.37	40°07'55.805"N	104°46'38.674"W	0.39	
14478.00	91.110	179.300	7436.17	7294.39	-7289.19	-354.62	40°07'54.916"N	104°46'38.651"W	2.22	
14568.00	90.330	179.190	7435.04	7384.34	-7379.18	-353.43	40°07'54.026"N	104°46'38.636"W	0.88	
14658.00	92.250	178.920	7433.01	7474.26	-7469.14	-351.95	40°07'53.137"N	104°46'38.617"W	2.15	
14748.00	92.310	179.400	7429.43	7564.14	-7559.06	-350.63	40°07'52.249"N	104°46'38.600"W	0.54	
14796.00	92.170	179.270	7427.56	7612.08	-7607.02	-350.07	40°07'51.775"N	104°46'38.593"W	0.40	Last BHI MWD+IFR Surveys
14852.00	92.170	179.270	7425.44	7668.02	-7662.97	-349.36	40°07'51.222"N	104°46'38.584"W	0.00	Projection to Bit

HOLE & CASING SECTIONS - Ref Wellbore: AGGREGATE STATE 37C-16HZ AWB Ref Wellpath: AGGREGATE STATE 37C-16HZ AWP									
String/Diameter	Start MD [ft]	End MD [ft]	Interval [ft]	Start TVD [ft]	End TVD [ft]	Start N/S [ft]	Start E/W [ft]	End N/S [ft]	End E/W [ft]
13.5in Open Hole	13.00	1025.00	1012.00	13.00	1024.98	0.00	0.00	-2.73	1.66
9.625in Casing Surface	13.00	1016.00	1003.00	13.00	1015.98	0.00	0.00	-2.69	1.65
8.75in Open Hole	1025.00	7772.00	6747.00	1024.98	7403.65	-2.73	1.66	-586.35	-254.63
7in Casing Intermediate	13.00	7762.00	7749.00	13.00	7403.57	0.00	0.00	-576.35	-254.42
6.125in Open Hole	7772.00	14852.00	7080.00	7403.65	7425.44	-586.35	-254.63	-7662.97	-349.36

REFERENCE WELLPATH IDENTIFICATION			
Operator	KERR-MCGEE OIL & GAS ONSHORE LP	Slot	SLOT#06 AGGREGATE STATE 37C-16HZ (2389'FSL 940'FEL, SEC.09)
Area	COLORADO	Well	AGGREGATE STATE 37C-16HZ
Field	WELD COUNTY (KERR MCGEE)	Wellbore	AGGREGATE STATE 37C-16HZ AWB
Facility	SEC.09-T2N-R66W		

TARGETS									
Name	MD [ft]	TVD [ft]	North [ft]	East [ft]	Grid East [US ft]	Grid North [US ft]	Latitude	Longitude	Shape
SEC.09-T2N-R66W SECTION LINES		10.00	-2.43	-2266.23	3200073.31	1298996.37	40°09'06.923"N	104°47'03.271"W	polygon
SEC.16-T2N-R66W SECTION LINES		10.00	-2.43	-2266.23	3200073.31	1298996.37	40°09'06.923"N	104°47'03.271"W	polygon
AGGREGATE STATE 37C-16HZ BHL (1'FSL & 1307'FEL, SEC.16) REV-2		7412.00	-7662.96	-380.98	3202020.95	1291351.81	40°07'51.222"N	104°46'38.991"W	point
AGGREGATE STATE 37C-16HZ BHL ON PLAT (1'FSL & 940'FEL, SEC.16) REV-1		7412.00	-7662.96	-13.98	3202387.92	1291354.81	40°07'51.222"N	104°46'34.266"W	point
AGGREGATE STATE 37C-16HZ LAND BOX		7412.00	0.00	0.00	3202339.35	1299017.30	40°09'06.948"N	104°46'34.086"W	polygon

WELLPATH COMPOSITION - Ref Wellbore: AGGREGATE STATE 37C-16HZ AWB Ref Wellpath: AGGREGATE STATE 37C-16HZ AWP					
Start MD [ft]	End MD [ft]	Positional Uncertainty Model	Log Name/Comment	Wellbore	
13.00	913.00	Generic gyro - continuous (Standard)	MS ENERGY GYRO SURVEYS <113-913>	AGGREGATE STATE 37C-16HZ AWB	
913.00	7722.00	NaviTrak (MAGCORR,IFR)	BHI MWD+IFR SURVEYS 8 3/4" HOLE <1073-7772>	AGGREGATE STATE 37C-16HZ AWB	
7722.00	14796.00	NaviTrak (MAGCORR,IFR)	BHI MWD+IFR SURVEYS 6 1/8" HOLE <7792-14198>	AGGREGATE STATE 37C-16HZ AWB	
14796.00	14852.00	Blind Drilling (std)	Projection to bit	AGGREGATE STATE 37C-16HZ AWB	

REFERENCE WELLPATH IDENTIFICATION			
Operator	KERR-MCGEE OIL & GAS ONSHORE LP	Slot	SLOT#06 AGGREGATE STATE 37C-16HZ (2389'FSL 940'FEL, SEC.09)
Area	COLORADO	Well	AGGREGATE STATE 37C-16HZ
Field	WELD COUNTY (KERR MCGEE)	Wellbore	AGGREGATE STATE 37C-16HZ AWB
Facility	SEC.09-T2N-R66W		

WELLPATH COMMENTS					
MD [ft]	Inclination [°]	Azimuth [°]	TVD [ft]	Comment	
13.00	0.000	98.070	13.00	Tie-On	
113.00	0.540	98.070	113.00	Begin GYRO Surveys	
913.00	0.440	255.460	912.98	Tie-Into GYRO Surveys	
1073.00	0.370	137.130	1072.98	Begin BHI MWD+IFR Surveys	
7762.00	89.456	181.224	7403.57	7" Casing Point	
14796.00	92.170	179.270	7427.56	Last BHI MWD+IFR Surveys	
14852.00	92.170	179.270	7425.44	Projection to Bit	