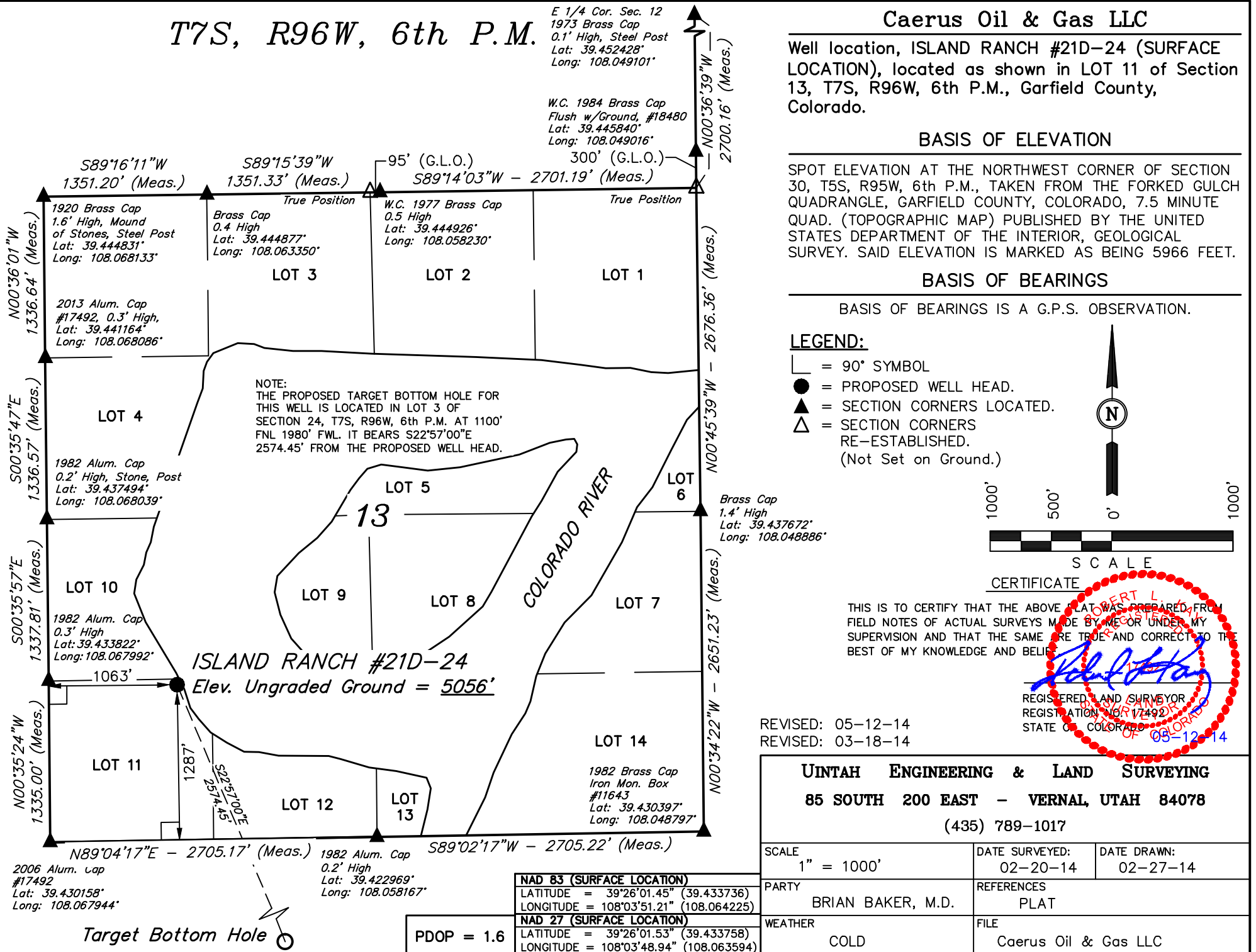


T7S, R96W, 6th P.M.

E 1/4 Cor. Sec. 12
1973 Brass Cap
0.1' High, Steel Post
Lat: 39.452428°
Long: 108.049101°

W.C. 1984 Brass Cap
Flush w/Ground, #18480
Lat: 39.445840°
Long: 108.049016°



Caerus Oil & Gas LLC

Well location, ISLAND RANCH #21D-24 (SURFACE LOCATION), located as shown in LOT 11 of Section 13, T7S, R96W, 6th P.M., Garfield County, Colorado.

BASIS OF ELEVATION

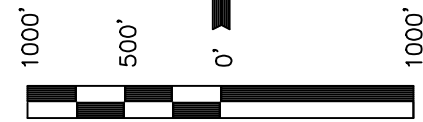
SPOT ELEVATION AT THE NORTHWEST CORNER OF SECTION 30, T5S, R95W, 6th P.M., TAKEN FROM THE FORKED GULCH QUADRANGLE, GARFIELD COUNTY, COLORADO, 7.5 MINUTE QUAD. (TOPOGRAPHIC MAP) PUBLISHED BY THE UNITED STATES DEPARTMENT OF THE INTERIOR, GEOLOGICAL SURVEY. SAID ELEVATION IS MARKED AS BEING 5966 FEET.

BASIS OF BEARINGS

BASIS OF BEARINGS IS A G.P.S. OBSERVATION.

LEGEND:

- = 90° SYMBOL
- = PROPOSED WELL HEAD.
- ▲ = SECTION CORNERS LOCATED.
- △ = SECTION CORNERS RE-ESTABLISHED.
(Not Set on Ground.)



CERTIFICATE

THIS IS TO CERTIFY THAT THE ABOVE PLAT WAS PREPARED FROM FIELD NOTES OF ACTUAL SURVEYS MADE BY ME OR UNDER MY SUPERVISION AND THAT THE SAME ARE TRUE AND CORRECT TO THE BEST OF MY KNOWLEDGE AND BELIEF.

REGISTERED LAND SURVEYOR
REGISTRATION NO. 17492
STATE OF COLORADO

REVISED: 05-12-14
REVISED: 03-18-14

UINTEH ENGINEERING & LAND SURVEYING		
85 SOUTH 200 EAST - VERNAL, UTAH 84078		
(435) 789-1017		
SCALE 1" = 1000'	DATE SURVEYED: 02-20-14	DATE DRAWN: 02-27-14
PARTY BRIAN BAKER, M.D.	REFERENCES PLAT	
WEATHER COLD	FILE Caerus Oil & Gas LLC	

Target Bottom Hole

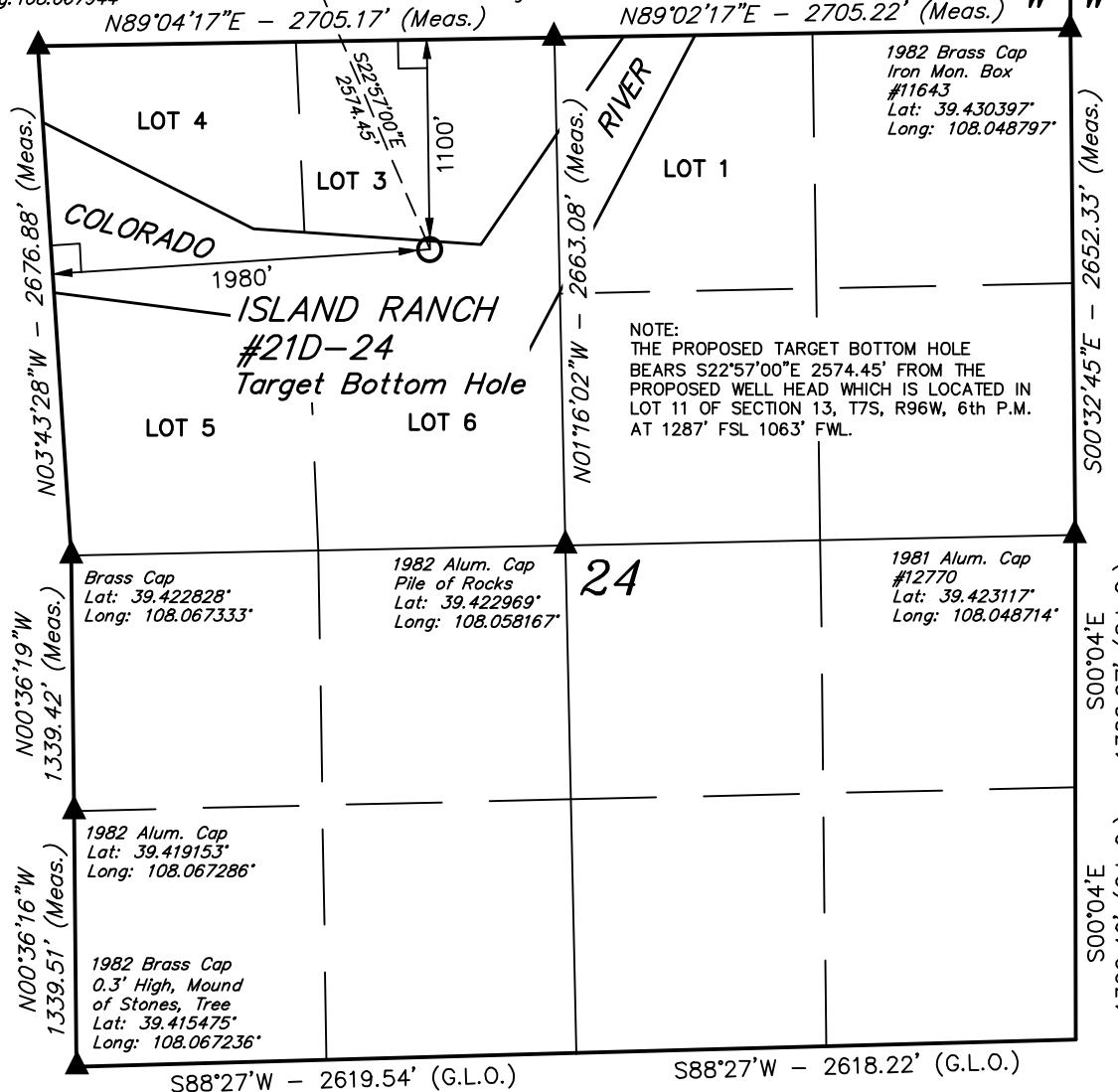
Surface Location ● T7S, R96W, 6th P.M.

2006 Alum. Cap
#17492
Lat: 39.430158°
Long: 108.067944°

1982 Alum. Cap
0.2' High
Lat: 39.422969°
Long: 108.058167°

R
96
W

R
95
W



Caerus Oil & Gas LLC

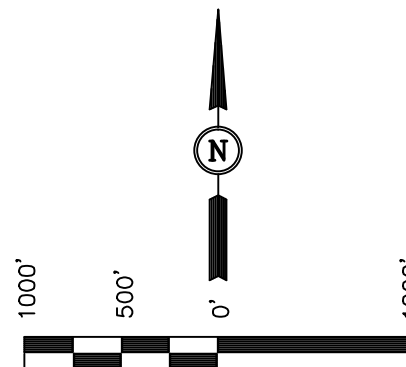
Well location, ISLAND RANCH #21D-24 (TARGET BOTTOM HOLE), located as shown in LOT 3 of Section 24, T7S, R96W, 6th P.M., Garfield County, Colorado.

BASIS OF ELEVATION

SPOT ELEVATION AT THE NORTHWEST CORNER OF SECTION 30, T5S, R95W, 6th P.M., TAKEN FROM THE FORKED GULCH QUADRANGLE, GARFIELD COUNTY, COLORADO, 7.5 MINUTE QUAD. (TOPOGRAPHIC MAP) PUBLISHED BY THE UNITED STATES DEPARTMENT OF THE INTERIOR, GEOLOGICAL SURVEY. SAID ELEVATION IS MARKED AS BEING 5966 FEET.

BASIS OF BEARINGS

BASIS OF BEARINGS IS A G.P.S. OBSERVATION.



SCALE
CERTIFICATE

THIS IS TO CERTIFY THAT THE ABOVE PLAT WAS PREPARED FROM FIELD NOTES OF ACTUAL SURVEYS MADE BY ME OR UNDER MY SUPERVISION AND THAT THE SAME ARE TRUE AND CORRECT TO THE BEST OF MY KNOWLEDGE AND BELIEF.

REGISTERED LAND SURVEYOR
REGISTRATION NO. 17492
STATE OF COLORADO

REVISED: 05-12-14

UINTAH ENGINEERING & LAND SURVEYING		
85 SOUTH 200 EAST - VERNAL, UTAH 84078		
(435) 789-1017		
SCALE 1" = 1000'	DATE SURVEYED: 02-20-14	DATE DRAWN: 02-27-14
PARTY BRIAN BAKER, M.D.	REFERENCES PLAT	
WEATHER COLD	FILE Caerus Oil & Gas LLC	

NAD 83 (TARGET BOTTOM HOLE)
LATITUDE = 39°25'38.02" (39.427228)
LONGITUDE = 108°03'38.44" (108.060678)
NAD 27 (TARGET BOTTOM HOLE)
LATITUDE = 39°25'38.10" (39.427250)
LONGITUDE = 108°03'36.17" (108.060047)