

WPX ENERGY ROCKY MOUNTAIN LLC-EBUS

RWF 413-25

Nabors 577

Post Job Summary

Cement Surface Casing

Date Prepared: 05/31/2014
Job Date: 03/02/2014

Submitted by: Kory Hugentobler – Grand Junction Cement Engineer

The Road to Excellence Starts with Safety

Sold To #: 300721	Ship To #: 3123563	Quote #:	Sales Order #: 0901162149
Customer: WPX ENERGY ROCKY MOUNTAIN LLC-EBUS		Customer Rep: LUKE HUBBARD	
Well Name: SAVAGE	Well #: RWF 413-25	API/UWI #: 05-045-21981-00	
Field: RULISON	City (SAP): RIF	County/Parish: GARFIELD	State: COLORADO
Legal Description: NE SW-25-6S-94W-1625FSL-2304FWL			
Contractor: NABORS DRLG		Rig/Platform Name/Num: NABORS 577	
Job BOM: 7521			
Well Type: DIRECTIONAL GAS			
Sales Person: HALAMERICA\HAM2616		Srvc Supervisor: Eric Carter	
Job			

Formation Name	
Formation Depth (MD)	Top 0 FT. Bottom 1172 FT.
Form Type	BHST
Job depth MD	1162ft
Water Depth	Job Depth TVD
Perforation Depth (MD)	Wk Ht Above Floor
	From To

Well Data										
Description	New / Used	Size in	ID in	Weight lbm/ft	Thread	Grade	Top MD ft	Bottom MD ft	Top TVD ft	Bottom TVD ft
Casing		9.625	9.001	32.3			0	1162	0	0
Open Hole Section			13.5				0	1172		

Tools and Accessories									
Type	Size in	Qty	Make	Depth ft		Type	Size in	Qty	Make
Guide Shoe	9.625			1162		Top Plug	9.625	1	HES
Float Shoe	9.625					Bottom Plug	9.625	0	HES
Float Collar	9.625					SSR plug set	9.625	0	HES
Insert Float	9.625					Plug Container	9.625	1	HES
Stage Tool	9.625					Centralizers	9.625	0	HES

Miscellaneous Materials										
Gelling Agt		Conc		Surfactant		Conc		Acid Type		Qty
Treatment Fld		Conc		Inhibitor		Conc		Sand Type		Size

Fluid Data										
Stage/Plug #: 1										
Fluid #	Stage Type	Fluid Name	Qty	Qty UoM	Mixing Density lbm/gal	Yield ft3/sack	Mix Fluid Gal	Rate bbl/min	Total Mix Fluid Gal	
1	Water	Water	20	bbl	8.33			4		
Fluid #	Stage Type	Fluid Name	Qty	Qty UoM	Mixing Density lbm/gal	Yield ft3/sack	Mix Fluid Gal	Rate bbl/min	Total Mix Fluid Gal	

2	Lead Cement	VARICEM (TM) CEMENT	160	Sack/Ton	12.3	2.38		8	13.75
13.75 Gal		FRESH WATER							
Fluid #	Stage Type	Fluid Name	Qty	Qty UoM	Mixing Density lbm/gal	Yield ft3/sack	Mix Fluid Gal	Rate bbl/min	Total Mix Fluid Gal
3	Tail Cement	VARICEM (TM) CEMENT	160	Sack/Ton	12.8	2.11		8	11.75
11.75 Gal		FRESH WATER							
Cement Left In Pipe		Amount	48 ft		Reason		Shoe Joint		
Comment									

HALLIBURTON

W/PX ENERGY ROCKY MOUNTAIN LLC-BUS

901162149
901162149

3.1 Job Event Log

Type	Seq. No.	Activity	Graph Label	Date	Time	Source	PS Pump Press (psi)	DH Density (ppg)	Comb Pump Rate (bbl/min)	Pump Stg Tot (bbl)	Comment
Event	1	Arrive at Location from Other Job or Site	Arrive at Location from Other Job or Site	3/2/2014	07:30:00	USER					RIG RUNNING CASING
Event	2	Assessment Of Location Safety Meeting	Assessment Of Location Safety Meeting	3/2/2014	08:30:00	USER					ATTENDED BY ALL HES CREW
Event	3	Other	Other	3/2/2014	08:40:00	USER					SPOT EQUIPMENT
Event	4	Pre-Rig Up Safety Meeting	Pre-Rig Up Safety Meeting	3/2/2014	08:50:00	USER					ATTENDED BY ALL HES CREW
Event	5	Rig-Up Equipment	Rig-Up Equipment	3/2/2014	09:00:00	USER					ATTENDED BY ALL HES CREW, RIG CREW AND COMPANY REP
Event	6	Pre-Job Safety Meeting	Pre-Job Safety Meeting	3/2/2014	09:30:00	USER					TP1162', TD1172', SI48', FC1114', MW 9.3 PPG, CASING 9.625", 32.3#, H-40, HOLE 13.5", 8 CENTRALIZERS, RIG CIRCULATED FOR 1.5 HRS PRIOR TO JOB
Event	7	Start Job	Start Job	3/2/2014	09:53:03	USER					
Event	8	Other	Other	3/2/2014	09:53:16	USER	42	8.33	2	2	FILL LINES
Event	9	Test Lines	Test Lines	3/2/2014	09:55:20	USER					PRESSURED UP TO 3214 PSI, PRESURE HELD
Event	10	Pump Spacer	Pump Spacer	3/2/2014	09:59:23	USER	120	8.33	4	20	FRESH WATER
Event	11	Pump Lead Cement	Pump Lead Cement	3/2/2014	10:04:41	USER	360	12.3	8	67.8	160 SKS VARICEM MIXED AT 12.3 PPG, 2.38 YIELD, 13.75 GL/SK
Event	12	Shutdown	Pump Tail Cement	3/2/2014	10:14:07	USER	360	12.8	8.00	60.1	160 SKS VARICEM MIXED AT 12.8 PPG, 2.11YIELD, 11.75 GL/SK
Event	13	Shutdown	Shutdown	3/2/2014	10:22:14	USER					
Event	14	Drop Top Plug	DROP TOP PLUG	3/2/2014	10:22:46	USER					PLUG LAUNCHED
Event	15	Pump Displacement	PUMP DISPLACEMENT	3/2/2014	10:23:12	USER	580	8.33	10	77.7	FRESH WATER

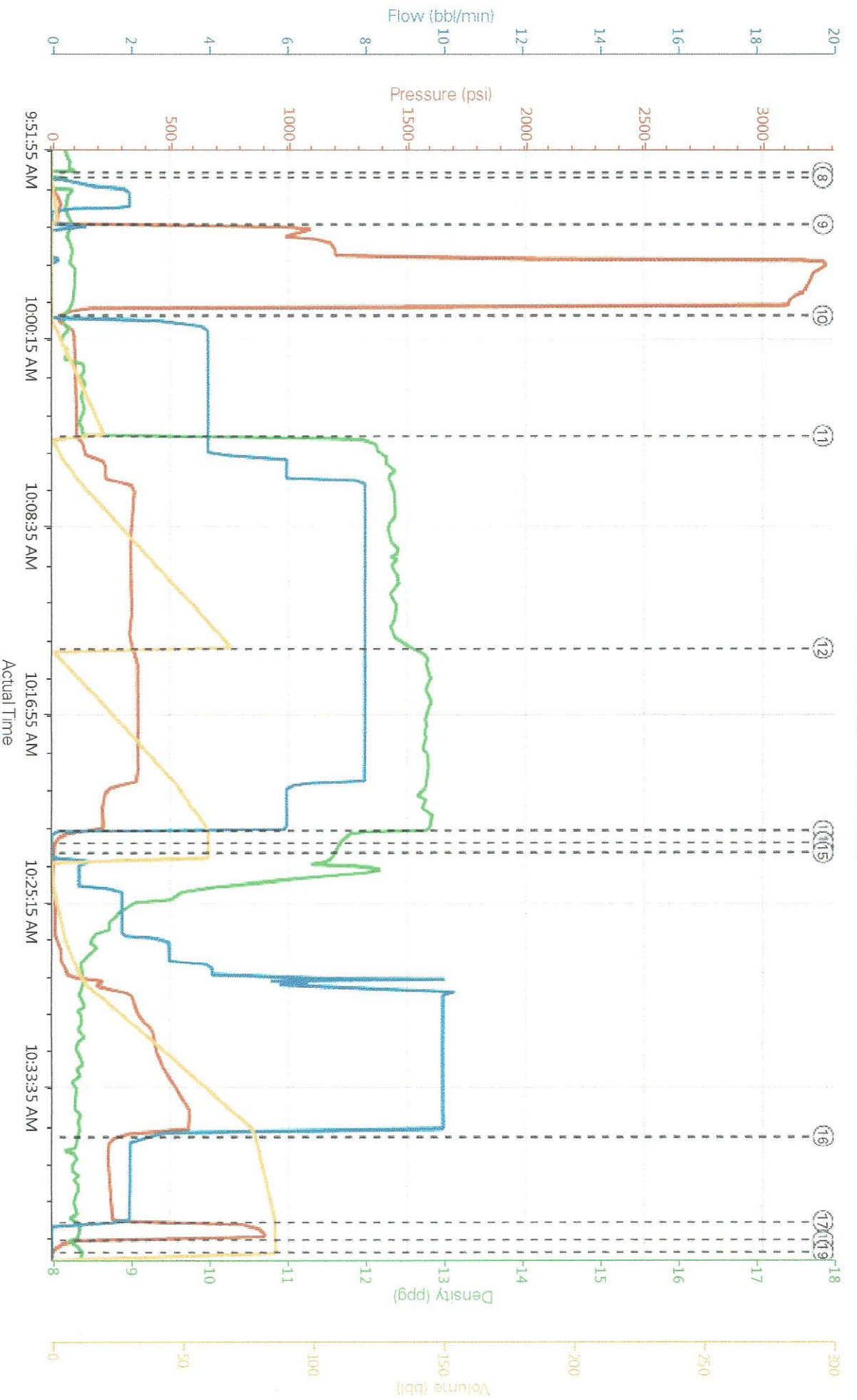
HALLIBURTON

WPX ENERGY ROCKY MOUNTAIN LLC-EBUS

901162149
901162149

Event	16	Slow Rate	Slow Rate	3/2/2014	10:35:51	USER	250	8.33	2	10	
Event	17	Bump Plug	Bump Plug	3/2/2014	10:39:40	USER	905				PLUG LANDED
Event	18	Check Floats	Check Floats	3/2/2014	10:40:30	USER					FLOATS HELD
Event	19	End Job	End Job	3/2/2014	10:41:00	USER					GOOD CIRCULATION THROUGH OUT JOB, PIPE NOT MOVED DURING JOB, 15 BBLS CEMENT TO SURFACE
Event	20	Post-Job Safety Meeting (Pre Rig-Down)	Post-Job Safety Meeting (Pre Rig-Down)	3/2/2014	10:45:00	USER					ATTENDED BY ALL HES CREW
Event	21	Rig-Down Equipment	Rig-Down Equipment	3/2/2014	10:50:00	USER					
Event	22	Depart Location Safety Meeting	Depart Location Safety Meeting	3/2/2014	11:20:00	USER					ATTENDED BY ALL HES CREW
Event	23	Crew Leave Location	Crew Leave Location	3/2/2014	11:30:00	USER					THANK YOU FOR USING HALLIBURTON CEMENT, ERIC CARTER AND CREW

WPX - RWF 413-25 - SURFACE



HALLIBURTON | iCem® Service

Created: 2014-03-02 08:23:25, Version: 3.0.1.21

Edit

Customer: WPX ENERGY ROCKY MOUNTAIN LLC-EBUS
Representative: LUKE HUBBARD

Job Date: 3/2/2014 9:24:36 AM
Sales Order #: 901162149

Well: RWF 413-25
ERIC CARTER: DAVID CAMPBELL/ELITE 2

HALLIBURTON

Water Analysis Report

Company: WPX
Submitted by: ERIC CARTER
Attention: J.Trout
Lease: NABORS 577
Well #: RWF 413-25

Date: 3/2/2014
Date Rec.: 3/2/2014
S.O.#: 901162149
Job Type: SURFACE

Specific Gravity	MAX	1
pH	8	7
Potassium (K)	5000	400 Mg / L
Hrdness	500	425 Mg / L
Iron (FE2)	300	0 Mg / L
Chlorides (Cl)	3000	500 Mg / L
Sulfates (SO ₄)	1500	<200 Mg / L
Temp	40-80	44 Deg
Total Dissolved Solids		580 Mg / L

Respectfully: ERIC CARTER

Title: CEMENTING SUPERVISOR

Location: Grand Junction, CO

NOTICE:

This report is limited to the described sample tested. Any person using or relying on this report agrees that Halliburton shall not be liable for any loss or damage whether due to act or omission resulting from such report or its use.