



May 16, 2014

7535 Hilltop Circle
Denver, CO 80221
www.petro-fs.com

Mr. Matt Lepore, Director
Colorado Oil and Gas Conservation Commission
1120 Lincoln Street, Suite 801
Denver, Colorado 80203

**RE: COGCC Rule 318A.e.: Proposed Wellbore Spacing Unit
Mojack I-28HN Well: NWNE, Section 28, Township 7 North, Range 64 West
Weld County, Colorado**

Dear Mr. Lepore:

Bayswater Exploration & Production, LLC (Bayswater) is planning to drill the above referenced well in accordance with the provisions set out in COGCC Rule 318A.e. Bayswater's proposed wellbore spacing unit consists of:

E½W½, W½E½ of Section 28, Township 7 North, Range 64 West
Containing 320 acres more or less

Bayswater is not the only owner within the proposed wellbore spacing unit and has provided notice to the remaining owners within this spacing unit, as required by COGCC Rule 318A.e.(6). Copies of the required notification letters are on file at Bayswater's office. The required thirty (30) day notice period has elapsed absent the receipt by Bayswater of any objection to their proposal by the owners within the proposed spacing unit for the subject well.

Enclosed is the Proposed Spacing Unit Plat to assist in your review and approval of Bayswater's proposed Application for Permit to Drill (APD) for the Mojack I-28HN well. Many thanks for your attention to this matter.

Respectfully,

Jennifer Grosshans
Regulatory Technician
Agent for Bayswater Exploration & Production, LLC

:jg

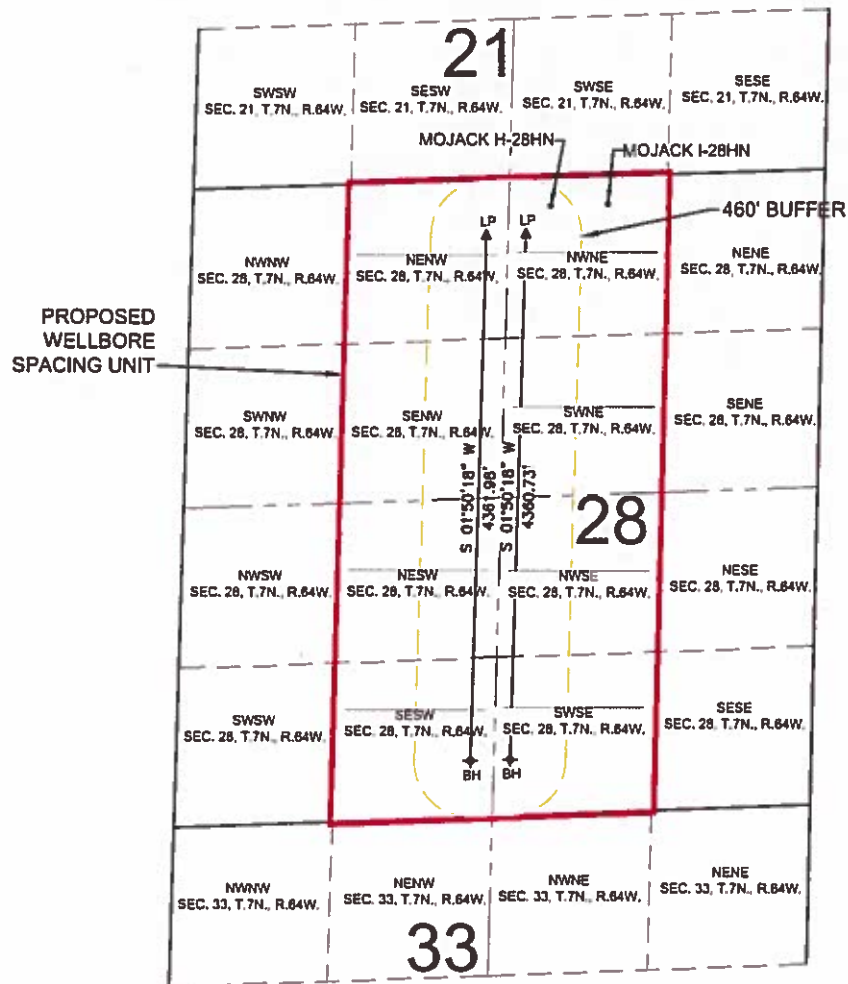
Enclosure: Proposed Spacing Unit Plat

We are what we repeatedly do. Excellence, then, is not an act, but a habit.

-Aristotle

PROPOSED 318A.e. WELLBORE SPACING UNIT

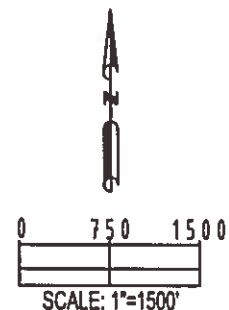
SECTION 28, TOWNSHIP 7 NORTH, RANGE 64 WEST, 6TH P.M.



WELL NAME	SURFACE FOOTAGES		SURFACE LOCATION (NAD83)	LANDING POINT LOCATION (NAD83)	BOTTOM HOLE LOCATION (NAD83)
MOJACK H-28HN	230' FNL	2282' FEL	LATITUDE= 40.550647° LONGITUDE= 104.553407°	LATITUDE= 40.549968° LONGITUDE= 104.555356°	LATITUDE= 40.538003° LONGITUDE= 104.556026°
MOJACK I-28HN	230' FNL	1806' FEL	LATITUDE= 40.550679° LONGITUDE= 104.551692°	LATITUDE= 40.549968° LONGITUDE= 104.554166°	LATITUDE= 40.538029° LONGITUDE= 104.554836°

LEGEND

- = PROPOSED WELL
- ▲ = LANDING POINT
- ✦ = BOTTOM HOLE
- LP = LANDING POINT
- BH = BOTTOM HOLE



PREPARED BY PFS Petroleum Field Services, LLC 7535 Hilltop Circle Denver, CO 80221	FIELD DATE:	SURFACE LOCATION
	02-05-14	NW 1/4 NE 1/4, SEC. 28, T7N, R64W, 6TH P.M.
	DRAWING DATE:	
	03-05-14	
BY:	CHECKED:	WELD COUNTY, COLORADO
SMF	CLM	