

Bayswater Exploration & Production, LLC

Well Name: **Mojack C-28HN**

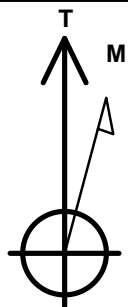
Surface Location: Mojack 28-C Pad (West) Sec.28-T7N-R64W
North American Datum 1983 , US State Plane 1983 , Colorado Northern Zone

Ground Elevation: 4884.0

+N/-S	+E/-W	Northing	Easting	Latitude	Longitude	Slot
0.0	0.0	1444842.44	3262955.10	40.550641	-104.553731	
RKB - 22.5' WELL @ 4906.5ft (RKB - 22.5')						

WELLBORE TARGET DETAILS

Name	TVD	+N/-S	+E/-W	Shape
SHL 230'FNL, 2371'FEL	1.0	0.0	0.0	Point
BHL 465'FSL, 800'FWL	6990.0	-4649.7	-2291.4	Point



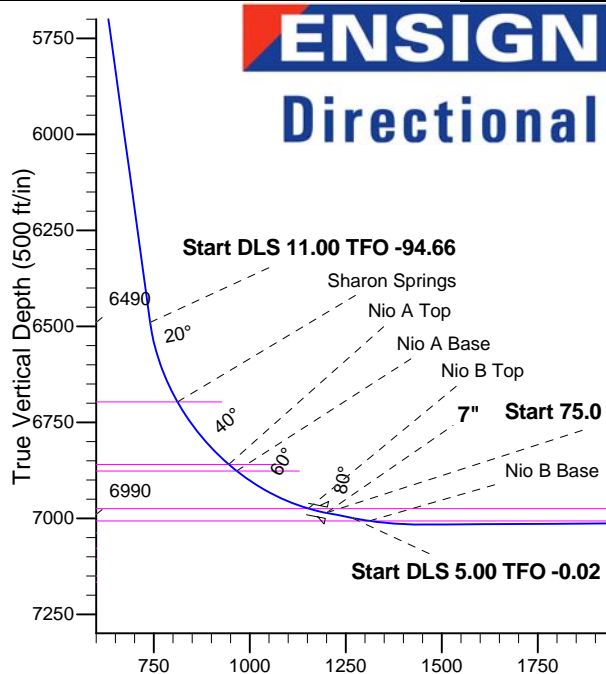
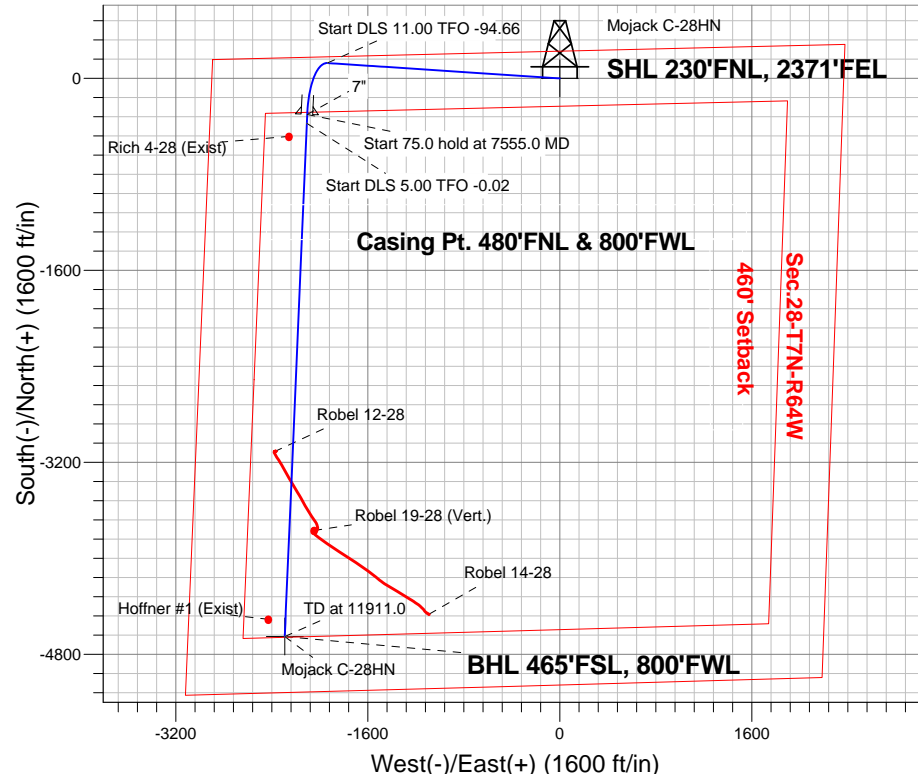
Azimuths to True North
Magnetic North: 8.38°

Magnetic Field
Strength: 52934.8snT
Dip Angle: 67.11°
Date: 4/8/2014
Model: IGRF2010

Mojack 28-C Pad (West) Sec.28-T7N-R64W
Mojack C-28HN
Plan #1 (4-08-14)
11:09, April 23 2014

ANNOTATIONS

TVD	MD	Annotation
600.0	600.0	KOP - Start Build 2.00
6489.8	6818.3	Start DLS 11.00 TFO -94.66
6986.0	7555.0	Start 75.0 hold at 7555.0 MD
6999.0	7630.0	Start DLS 5.00 TFO -0.02
6990.0	11911.0	TD at 11911.0



SECTION DETAILS

Sec	MD	Inc	Azi	TVD	+N/-S	+E/-W	DLeg	TFace	VSec	Target
1	0.0	0.00	0.00	0.0	0.0	0.0	0.00	0.00	0.0	
2	600.0	0.00	0.00	600.0	0.0	0.0	0.00	0.00	0.0	
3	1589.7	19.79	273.79	1570.1	11.2	-168.9	2.00	273.79	64.6	
4	6818.3	19.79	273.79	6489.8	128.1	-1935.6	0.00	0.00	740.7	
5	7555.0	80.00	182.46	6986.0	-300.0	-2104.8	11.00	-94.66	1199.5	
6	7630.0	80.00	182.46	6999.0	-373.8	-2108.0	0.00	0.00	1267.1	
7	7837.5	90.37	182.46	7016.4	-580.0	-2116.9	5.00	-0.02	1456.0	
8	11911.0	90.37	182.46	6990.0	-4649.7	-2291.4	0.00	0.00	5183.7	BHL 465'FSL, 800'FWL

Vertical Section at 206.23° (500 ft/in)



Bayswater Exploration & Production, LLC

SEC.28-T7N-R64W

Mojack 28-C Pad (West) Sec.28-T7N-R64W

Mojack C-28HN

Wellbore #1

Plan: Plan #1 (4-08-14)

Standard Planning Report

23 April, 2014



Database:	Landmark	Local Co-ordinate Reference:	Well Mojack C-28HN
Company:	Bayswater Exploration & Production, LLC	TVD Reference:	WELL @ 4906.5ft (RKB - 22.5')
Project:	SEC.28-T7N-R64W	MD Reference:	WELL @ 4906.5ft (RKB - 22.5')
Site:	Mojack 28-C Pad (West) Sec.28-T7N-R64W	North Reference:	True
Well:	Mojack C-28HN	Survey Calculation Method:	Minimum Curvature
Wellbore:	Wellbore #1		
Design:	Plan #1 (4-08-14)		

Project	SEC.28-T7N-R64W, Weld County, Colorado		
Map System:	US State Plane 1983	System Datum:	Mean Sea Level
Geo Datum:	North American Datum 1983		Using Well Reference Point
Map Zone:	Colorado Northern Zone		Using geodetic scale factor

Site						Mojack 28-C Pad (West) Sec.28-T7N-R64W											
Site Position:						Northing:			1,444,841.34 ft			Latitude:			40.550639		
From:			Lat/Long			Easting:			3,262,919.26 ft			Longitude:			-104.553860		
Position Uncertainty:			0.0 ft			Slot Radius:			"			Grid Convergence:			0.61 °		

Well	Mojack C-28HN					
Well Position	+N-S	0.7 ft	Northing:	1,444,842.44 ft	Latitude:	40.550641
	+E-W	35.8 ft	Easting:	3,262,955.10 ft	Longitude:	-104.553731
Position Uncertainty		0.0 ft	Wellhead Elevation:	ft	Ground Level:	4,884.0 ft

Wellbore	Wellbore #1				
Magnetics	Model Name	Sample Date	Declination (°)	Dip Angle (°)	Field Strength (nT)
	IGRF2010	4/8/2014	8.38	67.11	52,935

Design	Plan #1 (4-08-14)			
Audit Notes:				
Version:	Phase:	PROTOTYPE	Tie On Depth:	0.0
Vertical Section:	Depth From (TVD) (ft)	+N/-S (ft)	+E/-W (ft)	Direction (°)
	0.0	0.0	0.0	206.23

Plan Sections										
Measured Depth (ft)	Inclination (°)	Azimuth (°)	Vertical Depth (ft)	+N/-S (ft)	+E/-W (ft)	Dogleg Rate (°/100ft)	Build Rate (°/100ft)	Turn Rate (°/100ft)	TFO (°)	Target
0.0	0.00	0.00	0.0	0.0	0.0	0.00	0.00	0.00	0.00	
600.0	0.00	0.00	600.0	0.0	0.0	0.00	0.00	0.00	0.00	
1,589.7	19.79	273.79	1,570.1	11.2	-168.9	2.00	2.00	0.00	273.79	
6,818.3	19.79	273.79	6,489.8	128.1	-1,935.6	0.00	0.00	0.00	0.00	
7,555.0	80.00	182.46	6,986.0	-300.0	-2,104.8	11.00	8.17	-12.40	-94.66	
7,630.0	80.00	182.46	6,999.0	-373.8	-2,108.0	0.00	0.00	0.00	0.00	
7,837.5	90.37	182.46	7,016.4	-580.0	-2,116.9	5.00	5.00	0.00	-0.02	
11,911.0	90.37	182.46	6,990.0	-4,649.7	-2,291.4	0.00	0.00	0.00	0.00	BHL 465'FSL, 800'F

Database:	Landmark	Local Co-ordinate Reference:	Well Mojack C-28HN
Company:	Bayswater Exploration & Production, LLC	TVD Reference:	WELL @ 4906.5ft (RKB - 22.5')
Project:	SEC.28-T7N-R64W	MD Reference:	WELL @ 4906.5ft (RKB - 22.5')
Site:	Mojack 28-C Pad (West) Sec.28-T7N-R64W	North Reference:	True
Well:	Mojack C-28HN	Survey Calculation Method:	Minimum Curvature
Wellbore:	Wellbore #1		
Design:	Plan #1 (4-08-14)		

Planned Survey									
Measured Depth (ft)	Inclination (°)	Azimuth (°)	Vertical Depth (ft)	+N/-S (ft)	+E/-W (ft)	Vertical Section (ft)	Dogleg Rate (°/100ft)	Build Rate (°/100ft)	Turn Rate (°/100ft)
0.0	0.00	0.00	0.0	0.0	0.0	0.0	0.00	0.00	0.00
1.0	0.00	0.00	1.0	0.0	0.0	0.0	0.00	0.00	0.00
SHL 230°FNL, 2371°FEL									
100.0	0.00	0.00	100.0	0.0	0.0	0.0	0.00	0.00	0.00
200.0	0.00	0.00	200.0	0.0	0.0	0.0	0.00	0.00	0.00
300.0	0.00	0.00	300.0	0.0	0.0	0.0	0.00	0.00	0.00
400.0	0.00	0.00	400.0	0.0	0.0	0.0	0.00	0.00	0.00
500.0	0.00	0.00	500.0	0.0	0.0	0.0	0.00	0.00	0.00
600.0	0.00	0.00	600.0	0.0	0.0	0.0	0.00	0.00	0.00
KOP - Start Build 2.00									
700.0	2.00	273.79	700.0	0.1	-1.7	0.7	2.00	2.00	0.00
800.0	4.00	273.79	799.8	0.5	-7.0	2.7	2.00	2.00	0.00
900.0	6.00	273.79	899.5	1.0	-15.7	6.0	2.00	2.00	0.00
1,000.0	8.00	273.79	998.7	1.8	-27.8	10.6	2.00	2.00	0.00
1,100.0	10.00	273.79	1,097.5	2.9	-43.4	16.6	2.00	2.00	0.00
1,200.0	12.00	273.79	1,195.6	4.1	-62.5	23.9	2.00	2.00	0.00
1,300.0	14.00	273.79	1,293.1	5.6	-84.9	32.5	2.00	2.00	0.00
1,400.0	16.00	273.79	1,389.6	7.3	-110.7	42.4	2.00	2.00	0.00
1,500.0	18.00	273.79	1,485.3	9.3	-139.9	53.5	2.00	2.00	0.00
1,589.7	19.79	273.79	1,570.1	11.2	-168.9	64.6	2.00	2.00	0.00
1,600.0	19.79	273.79	1,579.8	11.4	-172.4	66.0	0.00	0.00	0.00
1,700.0	19.79	273.79	1,673.9	13.6	-206.2	78.9	0.00	0.00	0.00
1,800.0	19.79	273.79	1,768.0	15.9	-240.0	91.8	0.00	0.00	0.00
1,900.0	19.79	273.79	1,862.1	18.1	-273.7	104.8	0.00	0.00	0.00
2,000.0	19.79	273.79	1,956.2	20.4	-307.5	117.7	0.00	0.00	0.00
2,100.0	19.79	273.79	2,050.3	22.6	-341.3	130.6	0.00	0.00	0.00
2,200.0	19.79	273.79	2,144.4	24.8	-375.1	143.6	0.00	0.00	0.00
2,300.0	19.79	273.79	2,238.5	27.1	-408.9	156.5	0.00	0.00	0.00
2,400.0	19.79	273.79	2,332.6	29.3	-442.7	169.4	0.00	0.00	0.00
2,500.0	19.79	273.79	2,426.6	31.5	-476.5	182.3	0.00	0.00	0.00
2,600.0	19.79	273.79	2,520.7	33.8	-510.3	195.3	0.00	0.00	0.00
2,700.0	19.79	273.79	2,614.8	36.0	-544.1	208.2	0.00	0.00	0.00
2,800.0	19.79	273.79	2,708.9	38.2	-577.8	221.1	0.00	0.00	0.00
2,900.0	19.79	273.79	2,803.0	40.5	-611.6	234.1	0.00	0.00	0.00
3,000.0	19.79	273.79	2,897.1	42.7	-645.4	247.0	0.00	0.00	0.00
3,100.0	19.79	273.79	2,991.2	44.9	-679.2	259.9	0.00	0.00	0.00
3,200.0	19.79	273.79	3,085.3	47.2	-713.0	272.9	0.00	0.00	0.00
3,300.0	19.79	273.79	3,179.4	49.4	-746.8	285.8	0.00	0.00	0.00
3,400.0	19.79	273.79	3,273.5	51.7	-780.6	298.7	0.00	0.00	0.00
3,500.0	19.79	273.79	3,367.6	53.9	-814.4	311.7	0.00	0.00	0.00
3,600.0	19.79	273.79	3,461.7	56.1	-848.2	324.6	0.00	0.00	0.00
3,700.0	19.79	273.79	3,555.8	58.4	-881.9	337.5	0.00	0.00	0.00
3,800.0	19.79	273.79	3,649.8	60.6	-915.7	350.4	0.00	0.00	0.00
3,900.0	19.79	273.79	3,743.9	62.8	-949.5	363.4	0.00	0.00	0.00
3,961.2	19.79	273.79	3,801.5	64.2	-970.2	371.3	0.00	0.00	0.00
Parkman									
4,000.0	19.79	273.79	3,838.0	65.1	-983.3	376.3	0.00	0.00	0.00
4,100.0	19.79	273.79	3,932.1	67.3	-1,017.1	389.2	0.00	0.00	0.00
4,200.0	19.79	273.79	4,026.2	69.5	-1,050.9	402.2	0.00	0.00	0.00
4,300.0	19.79	273.79	4,120.3	71.8	-1,084.7	415.1	0.00	0.00	0.00
4,400.0	19.79	273.79	4,214.4	74.0	-1,118.5	428.0	0.00	0.00	0.00
4,500.0	19.79	273.79	4,308.5	76.3	-1,152.3	441.0	0.00	0.00	0.00
4,600.0	19.79	273.79	4,402.6	78.5	-1,186.1	453.9	0.00	0.00	0.00

Database:	Landmark	Local Co-ordinate Reference:	Well Mojack C-28HN
Company:	Bayswater Exploration & Production, LLC	TVD Reference:	WELL @ 4906.5ft (RKB - 22.5')
Project:	SEC.28-T7N-R64W	MD Reference:	WELL @ 4906.5ft (RKB - 22.5')
Site:	Mojack 28-C Pad (West) Sec.28-T7N-R64W	North Reference:	True
Well:	Mojack C-28HN	Survey Calculation Method:	Minimum Curvature
Wellbore:	Wellbore #1		
Design:	Plan #1 (4-08-14)		

Planned Survey									
Measured Depth (ft)	Inclination (°)	Azimuth (°)	Vertical Depth (ft)	+N/-S (ft)	+E/-W (ft)	Vertical Section (ft)	Dogleg Rate (°/100ft)	Build Rate (°/100ft)	Turn Rate (°/100ft)
4,700.0	19.79	273.79	4,496.7	80.7	-1,219.8	466.8	0.00	0.00	0.00
4,770.0	19.79	273.79	4,562.5	82.3	-1,243.5	475.9	0.00	0.00	0.00
Sussex									
4,800.0	19.79	273.79	4,590.8	83.0	-1,253.6	479.8	0.00	0.00	0.00
4,900.0	19.79	273.79	4,684.9	85.2	-1,287.4	492.7	0.00	0.00	0.00
5,000.0	19.79	273.79	4,778.9	87.4	-1,321.2	505.6	0.00	0.00	0.00
5,100.0	19.79	273.79	4,873.0	89.7	-1,355.0	518.5	0.00	0.00	0.00
5,200.0	19.79	273.79	4,967.1	91.9	-1,388.8	531.5	0.00	0.00	0.00
5,300.0	19.79	273.79	5,061.2	94.1	-1,422.6	544.4	0.00	0.00	0.00
5,371.5	19.79	273.79	5,128.5	95.7	-1,446.7	553.7	0.00	0.00	0.00
Shannon									
5,400.0	19.79	273.79	5,155.3	96.4	-1,456.4	557.3	0.00	0.00	0.00
5,500.0	19.79	273.79	5,249.4	98.6	-1,490.2	570.3	0.00	0.00	0.00
5,600.0	19.79	273.79	5,343.5	100.9	-1,523.9	583.2	0.00	0.00	0.00
5,700.0	19.79	273.79	5,437.6	103.1	-1,557.7	596.1	0.00	0.00	0.00
5,800.0	19.79	273.79	5,531.7	105.3	-1,591.5	609.1	0.00	0.00	0.00
5,900.0	19.79	273.79	5,625.8	107.6	-1,625.3	622.0	0.00	0.00	0.00
6,000.0	19.79	273.79	5,719.9	109.8	-1,659.1	634.9	0.00	0.00	0.00
6,100.0	19.79	273.79	5,814.0	112.0	-1,692.9	647.9	0.00	0.00	0.00
6,200.0	19.79	273.79	5,908.0	114.3	-1,726.7	660.8	0.00	0.00	0.00
6,300.0	19.79	273.79	6,002.1	116.5	-1,760.5	673.7	0.00	0.00	0.00
6,400.0	19.79	273.79	6,096.2	118.7	-1,794.3	686.6	0.00	0.00	0.00
6,500.0	19.79	273.79	6,190.3	121.0	-1,828.0	699.6	0.00	0.00	0.00
6,600.0	19.79	273.79	6,284.4	123.2	-1,861.8	712.5	0.00	0.00	0.00
6,700.0	19.79	273.79	6,378.5	125.4	-1,895.6	725.4	0.00	0.00	0.00
6,800.0	19.79	273.79	6,472.6	127.7	-1,929.4	738.4	0.00	0.00	0.00
6,818.3	19.79	273.79	6,489.8	128.1	-1,935.6	740.7	0.00	0.00	0.00
Start DLS 11.00 TFO -94.66									
6,900.0	20.99	248.01	6,566.6	123.5	-1,963.0	757.0	11.01	1.46	-31.55
7,000.0	26.67	224.39	6,658.2	100.7	-1,995.4	791.8	11.00	5.68	-23.62
7,043.5	30.02	217.18	6,696.5	85.0	-2,008.8	811.7	11.00	7.71	-16.56
Sharon Springs									
7,100.0	34.84	209.84	6,744.2	59.8	-2,025.4	841.7	11.00	8.53	-13.00
7,200.0	44.13	200.53	6,821.3	2.2	-2,051.9	905.1	11.00	9.29	-9.32
7,255.8	49.57	196.62	6,859.5	-36.4	-2,064.8	945.4	11.00	9.75	-7.00
Nio A Top									
7,282.8	52.24	194.96	6,876.5	-56.5	-2,070.5	966.0	11.00	9.90	-6.17
Nio A Base									
7,300.0	53.96	193.96	6,886.8	-69.9	-2,074.0	979.5	11.00	9.97	-5.81
7,400.0	64.07	188.88	6,938.3	-153.8	-2,090.7	1,062.1	11.00	10.11	-5.08
7,500.0	74.32	184.61	6,973.8	-246.5	-2,101.5	1,150.1	11.00	10.25	-4.27
7,502.7	74.60	184.50	6,974.5	-249.1	-2,101.8	1,152.5	11.00	10.30	-4.00
Nio B Top									
7,555.0	80.00	182.46	6,986.0	-300.0	-2,104.8	1,199.5	11.00	10.32	-3.90
Start 75.0 hold at 7555.0 MD - 7"									
7,600.0	80.00	182.46	6,993.8	-344.3	-2,106.7	1,240.1	0.01	0.01	0.00
7,630.0	80.00	182.46	6,999.0	-373.8	-2,108.0	1,267.1	0.00	0.00	0.00
Start DLS 5.00 TFO -0.02									
7,679.0	82.45	182.46	7,006.5	-422.2	-2,110.1	1,311.5	5.00	5.00	0.00
Nio B Base									
7,700.0	83.50	182.46	7,009.1	-443.0	-2,111.0	1,330.5	5.00	5.00	0.00
7,800.0	88.50	182.46	7,016.0	-542.6	-2,115.3	1,421.8	5.00	5.00	0.00
7,837.5	90.37	182.46	7,016.4	-580.0	-2,116.9	1,456.0	5.00	5.00	0.00

Database:	Landmark	Local Co-ordinate Reference:	Well Mojack C-28HN
Company:	Bayswater Exploration & Production, LLC	TVD Reference:	WELL @ 4906.5ft (RKB - 22.5')
Project:	SEC.28-T7N-R64W	MD Reference:	WELL @ 4906.5ft (RKB - 22.5')
Site:	Mojack 28-C Pad (West) Sec.28-T7N-R64W	North Reference:	True
Well:	Mojack C-28HN	Survey Calculation Method:	Minimum Curvature
Wellbore:	Wellbore #1		
Design:	Plan #1 (4-08-14)		

Planned Survey										
Measured Depth (ft)	Inclination (°)	Azimuth (°)	Vertical Depth (ft)	+N/-S (ft)	+E/-W (ft)	Vertical Section (ft)	Dogleg Rate (°/100ft)	Build Rate (°/100ft)	Turn Rate (°/100ft)	
7,900.0	90.37	182.46	7,016.0	-642.5	-2,119.5	1,513.3	0.00	0.00	0.00	
8,000.0	90.37	182.46	7,015.4	-742.4	-2,123.8	1,604.8	0.00	0.00	0.00	
8,100.0	90.37	182.46	7,014.7	-842.3	-2,128.1	1,696.3	0.00	0.00	0.00	
8,200.0	90.37	182.46	7,014.1	-942.2	-2,132.4	1,787.8	0.00	0.00	0.00	
8,300.0	90.37	182.46	7,013.4	-1,042.1	-2,136.7	1,879.3	0.00	0.00	0.00	
8,400.0	90.37	182.46	7,012.8	-1,142.0	-2,141.0	1,970.8	0.00	0.00	0.00	
8,500.0	90.37	182.46	7,012.1	-1,241.9	-2,145.3	2,062.3	0.00	0.00	0.00	
8,600.0	90.37	182.46	7,011.5	-1,341.8	-2,149.5	2,153.8	0.00	0.00	0.00	
8,700.0	90.37	182.46	7,010.8	-1,441.8	-2,153.8	2,245.3	0.00	0.00	0.00	
8,800.0	90.37	182.46	7,010.2	-1,541.7	-2,158.1	2,336.8	0.00	0.00	0.00	
8,900.0	90.37	182.46	7,009.5	-1,641.6	-2,162.4	2,428.4	0.00	0.00	0.00	
9,000.0	90.37	182.46	7,008.9	-1,741.5	-2,166.7	2,519.9	0.00	0.00	0.00	
9,100.0	90.37	182.46	7,008.2	-1,841.4	-2,171.0	2,611.4	0.00	0.00	0.00	
9,200.0	90.37	182.46	7,007.6	-1,941.3	-2,175.3	2,702.9	0.00	0.00	0.00	
9,300.0	90.37	182.46	7,006.9	-2,041.2	-2,179.5	2,794.4	0.00	0.00	0.00	
9,400.0	90.37	182.46	7,006.3	-2,141.1	-2,183.8	2,885.9	0.00	0.00	0.00	
9,500.0	90.37	182.46	7,005.6	-2,241.0	-2,188.1	2,977.4	0.00	0.00	0.00	
9,600.0	90.37	182.46	7,005.0	-2,340.9	-2,192.4	3,068.9	0.00	0.00	0.00	
9,700.0	90.37	182.46	7,004.3	-2,440.8	-2,196.7	3,160.4	0.00	0.00	0.00	
9,800.0	90.37	182.46	7,003.7	-2,540.7	-2,201.0	3,251.9	0.00	0.00	0.00	
9,900.0	90.37	182.46	7,003.0	-2,640.6	-2,205.3	3,343.4	0.00	0.00	0.00	
10,000.0	90.37	182.46	7,002.4	-2,740.5	-2,209.5	3,435.0	0.00	0.00	0.00	
10,100.0	90.37	182.46	7,001.7	-2,840.4	-2,213.8	3,526.5	0.00	0.00	0.00	
10,200.0	90.37	182.46	7,001.1	-2,940.3	-2,218.1	3,618.0	0.00	0.00	0.00	
10,300.0	90.37	182.46	7,000.4	-3,040.2	-2,222.4	3,709.5	0.00	0.00	0.00	
10,400.0	90.37	182.46	6,999.8	-3,140.2	-2,226.7	3,801.0	0.00	0.00	0.00	
10,500.0	90.37	182.46	6,999.1	-3,240.1	-2,231.0	3,892.5	0.00	0.00	0.00	
10,600.0	90.37	182.46	6,998.5	-3,340.0	-2,235.3	3,984.0	0.00	0.00	0.00	
10,700.0	90.37	182.46	6,997.9	-3,439.9	-2,239.5	4,075.5	0.00	0.00	0.00	
10,800.0	90.37	182.46	6,997.2	-3,539.8	-2,243.8	4,167.0	0.00	0.00	0.00	
10,900.0	90.37	182.46	6,996.6	-3,639.7	-2,248.1	4,258.5	0.00	0.00	0.00	
11,000.0	90.37	182.46	6,995.9	-3,739.6	-2,252.4	4,350.1	0.00	0.00	0.00	
11,100.0	90.37	182.46	6,995.3	-3,839.5	-2,256.7	4,441.6	0.00	0.00	0.00	
11,200.0	90.37	182.46	6,994.6	-3,939.4	-2,261.0	4,533.1	0.00	0.00	0.00	
11,300.0	90.37	182.46	6,994.0	-4,039.3	-2,265.3	4,624.6	0.00	0.00	0.00	
11,400.0	90.37	182.46	6,993.3	-4,139.2	-2,269.5	4,716.1	0.00	0.00	0.00	
11,500.0	90.37	182.46	6,992.7	-4,239.1	-2,273.8	4,807.6	0.00	0.00	0.00	
11,600.0	90.37	182.46	6,992.0	-4,339.0	-2,278.1	4,899.1	0.00	0.00	0.00	
11,700.0	90.37	182.46	6,991.4	-4,438.9	-2,282.4	4,990.6	0.00	0.00	0.00	
11,800.0	90.37	182.46	6,990.7	-4,538.8	-2,286.7	5,082.1	0.00	0.00	0.00	
11,900.0	90.37	182.46	6,990.1	-4,638.7	-2,291.0	5,173.6	0.00	0.00	0.00	
11,911.0	90.37	182.46	6,990.0	-4,649.7	-2,291.4	5,183.7	0.00	0.00	0.00	
BHL 465'FSL, 800'FWL										

Casing Points					
Measured Depth (ft)	Vertical Depth (ft)	Name	Casing Diameter (")	Hole Diameter (")	
7,555.0	6,986.0	7"	7	7-1/2	

Database:	Landmark	Local Co-ordinate Reference:	Well Mojack C-28HN
Company:	Bayswater Exploration & Production, LLC	TVD Reference:	WELL @ 4906.5ft (RKB - 22.5')
Project:	SEC.28-T7N-R64W	MD Reference:	WELL @ 4906.5ft (RKB - 22.5')
Site:	Mojack 28-C Pad (West) Sec.28-T7N-R64W	North Reference:	True
Well:	Mojack C-28HN	Survey Calculation Method:	Minimum Curvature
Wellbore:	Wellbore #1		
Design:	Plan #1 (4-08-14)		

Formations					
Measured Depth (ft)	Vertical Depth (ft)	Name	Lithology	Dip (°)	Dip Direction (°)
3,961.2	3,801.5	Parkman		0.00	
4,770.0	4,562.5	Sussex		0.00	
5,371.5	5,128.5	Shannon			
7,043.5	6,696.5	Sharon Springs			
7,255.8	6,859.5	Nio A Top			
7,282.8	6,876.5	Nio A Base			
7,502.7	6,974.5	Nio B Top			
7,679.0	7,006.5	Nio B Base			
	7,036.5	Nio C Top			
	7,076.5	Nio C Base			
	7,104.5	Fort Hays			
	7,148.5	Codell			
	7,164.5	Base of Codell			

Plan Annotations				
Measured Depth (ft)	Vertical Depth (ft)	Local Coordinates		Comment
		+N/-S (ft)	+E/-W (ft)	
600.0	600.0	0.0	0.0	KOP - Start Build 2.00
6,818.3	6,489.8	128.1	-1,935.6	Start DLS 11.00 TFO -94.66
7,555.0	6,986.0	-300.0	-2,104.8	Start 75.0 hold at 7555.0 MD
7,630.0	6,999.0	-373.8	-2,108.0	Start DLS 5.00 TFO -0.02
11,911.0	6,990.0	-4,649.7	-2,291.4	TD at 11911.0



Bayswater Exploration & Production, LLC

SEC.28-T7N-R64W

Mojack 28-C Pad (West) Sec.28-T7N-R64W

Mojack C-28HN

Wellbore #1

Plan #1 (4-08-14)

Anticollision Report

23 April, 2014



Company:	Bayswater Exploration & Production, LLC	Local Co-ordinate Reference:	Well Mojack C-28HN
Project:	SEC.28-T7N-R64W	TVD Reference:	WELL @ 4906.5ft (RKB - 22.5')
Reference Site:	Mojack 28-C Pad (West) Sec.28-T7N-R64W	MD Reference:	WELL @ 4906.5ft (RKB - 22.5')
Site Error:	0.0ft	North Reference:	True
Reference Well:	Mojack C-28HN	Survey Calculation Method:	Minimum Curvature
Well Error:	0.0ft	Output errors are at	2.00 sigma
Reference Wellbore	Wellbore #1	Database:	Landmark
Reference Design:	Plan #1 (4-08-14)	Offset TVD Reference:	Offset Datum

Reference	Plan #1 (4-08-14)		
Filter type:	NO GLOBAL FILTER: Using user defined selection & filtering criteria		
Interpolation Method:	MD Interval 100.0ft	Error Model:	ISCWSA
Depth Range:	Unlimited	Scan Method:	Closest Approach 3D
Results Limited by:	Maximum center-center distance of 1,000.0ft	Error Surface:	Elliptical Conic
Warning Levels Evaluated at:	2.00 Sigma		

Survey Tool Program	Date 4/22/2014			
From (ft)	To (ft)	Survey (Wellbore)	Tool Name	Description
0.0	11,911.0	Plan #1 (4-08-14) (Wellbore #1)	MWD	MWD - Standard

Summary						
Site Name	Reference Measured Depth (ft)	Offset Measured Depth (ft)	Distance Between Centres (ft)	Distance Between Ellipses (ft)	Separation Factor	Warning
Offset Well - Wellbore - Design						
Existing Wells Pad Sec.28-T7N-R64W						
Hoffner #1 (Exist) - Wellbore #1 - Wellbore #1	11,774.2	6,924.4	143.6	-85.2	0.627	Level 1, CC, ES, SF
Rich 4-28 (Exist) - Wellbore #1 - Wellbore #1	7,745.3	6,966.8	144.9	-17.9	0.890	Level 1, CC, ES, SF
Mojack 28-C Pad (West) Sec.28-T7N-R64W						
Mojack A-28HN - Wellbore #1 - Plan #1 (4-08-14)	200.0	200.0	35.9	35.2	53.176	CC, ES
Mojack A-28HN - Wellbore #1 - Plan #1 (4-08-14)	11,911.0	12,132.1	660.1	474.5	3.556	SF
Mojack B-28HN - Wellbore #1 - Plan #1 (4-08-14)	400.0	400.0	17.8	16.2	11.307	CC, ES
Mojack B-28HN - Wellbore #1 - Plan #1 (4-08-14)	11,911.0	12,058.5	339.0	160.3	1.897	SF
Mojack D-28HC - Wellbore #1 - Plan #1 (4-08-14)	600.0	600.0	18.1	15.6	7.307	CC, ES
Mojack D-28HC - Wellbore #1 - Plan #1 (4-08-14)	11,900.0	11,961.6	373.3	200.0	2.154	SF
Mojack E-28HN - Wellbore #1 - Plan #1 (4-08-14)	600.0	601.0	36.1	33.7	14.602	CC, ES
Mojack E-28HN - Wellbore #1 - Plan #1 (4-08-14)	11,911.0	11,810.3	662.7	477.8	3.584	SF
Mojack F-28HN - Wellbore #1 - Plan #1 (4-08-14)	600.0	602.0	53.9	51.5	21.774	CC, ES
Mojack F-28HN - Wellbore #1 - Plan #1 (4-08-14)	11,911.0	11,764.8	992.7	808.6	5.393	SF
Mojack G-28HN - Wellbore #1 - Plan #1 (4-08-14)	600.0	602.0	72.3	69.8	29.180	CC, ES
Mojack G-28HN - Wellbore #1 - Plan #1 (4-08-14)	900.0	901.5	87.9	84.1	23.264	SF
Mojack H-28HN - Wellbore #1 - Plan #1 (4-08-14)	600.0	603.0	90.1	87.6	36.329	CC, ES
Mojack H-28HN - Wellbore #1 - Plan #1 (4-08-14)	900.0	902.5	105.7	101.9	27.954	SF
Robel 14-28 Pad Sec.28-T7N-R64W						
Robel 12-28 - Wellbore #1 - Wellbore #1	10,374.2	7,043.3	147.6	64.7	1.780	CC, ES, SF
Robel 14-28 - Wellbore #1 - Wellbore #1						Out of range
Robel 19-28 (Vert.) - Wellbore #1 - Wellbore #1	11,018.6	6,954.3	205.8	-9.6	0.955	Level 1, CC, ES, SF

Offset Design Existing Wells Pad Sec.28-T7N-R64W - Hoffner #1 (Exist) - Wellbore #1 - Wellbore #1											
Survey Program: 7205-UNKNOWN											
Reference Offset Semi Major Axis Distance											
Measured Depth (ft)	Vertical Depth (ft)	Measured Depth (ft)	Vertical Depth (ft)	Reference (ft)	Offset (ft)	Highside Toolface (°)	Offset Wellbore Centre +N/-S (ft)	+E/-W (ft)	Between Centres (ft)	Between Ellipses (ft)	Minimum Separation (ft)
10,800.0	6,997.2	6,930.7	6,930.7	80.3	138.6	92.52	-4,506.9	-2,429.0	984.7	774.2	210.44
10,900.0	6,996.6	6,930.1	6,930.1	81.9	138.6	92.26	-4,506.9	-2,429.0	885.9	673.5	212.33
11,000.0	6,995.9	6,929.4	6,929.4	83.5	138.6	92.00	-4,506.9	-2,429.0	787.4	573.1	214.22
11,100.0	6,995.3	6,928.8	6,928.8	85.2	138.6	91.74	-4,506.9	-2,429.0	689.3	473.2	216.10
11,200.0	6,994.6	6,928.1	6,928.1	86.9	138.6	91.49	-4,506.9	-2,429.0	591.8	373.9	217.99
11,300.0	6,994.0	6,927.5	6,927.5	88.5	138.5	91.23	-4,506.9	-2,429.0	495.4	275.6	219.88
											2.253

CC - Min centre to center distance or convergent point, SF - min separation factor, ES - min ellipse separation

Company:	Bayswater Exploration & Production, LLC	Local Co-ordinate Reference:	Well Mojack C-28HN
Project:	SEC.28-T7N-R64W	TVD Reference:	WELL @ 4906.5ft (RKB - 22.5')
Reference Site:	Mojack 28-C Pad (West) Sec.28-T7N-R64W	MD Reference:	WELL @ 4906.5ft (RKB - 22.5')
Site Error:	0.0ft	North Reference:	True
Reference Well:	Mojack C-28HN	Survey Calculation Method:	Minimum Curvature
Well Error:	0.0ft	Output errors are at	2.00 sigma
Reference Wellbore	Wellbore #1	Database:	Landmark
Reference Design:	Plan #1 (4-08-14)	Offset TVD Reference:	Offset Datum

Offset Design Existing Wells Pad Sec.28-T7N-R64W - Hoffner #1 (Exist) - Wellbore #1 - Wellbore #1													Offset Site Error:	0.0 ft
Survey Program: 7205-UNKNOWN													Offset Well Error:	0.0 ft
Reference	Offset	Semi Major Axis			Distance									Warning
Measured Depth (ft)	Vertical Depth (ft)	Measured Depth (ft)	Vertical Depth (ft)	Reference (ft)	Offset (ft)	Highside Toolface (°)	Offset Wellbore Centre +N/-S (ft)	+E/-W (ft)	Between Centres (ft)	Between Ellipses (ft)	Minimum Separation (ft)	Separation Factor		
11,400.0	6,993.3	6,926.8	6,926.8	90.2	138.5	90.97	-4,506.9	-2,429.0	400.8	179.0	221.76	1.807		
11,500.0	6,992.7	6,926.2	6,926.2	91.9	138.5	90.71	-4,506.9	-2,429.0	309.5	85.8	223.65	1.384	Level 3	
11,600.0	6,992.0	6,925.5	6,925.5	93.6	138.5	90.45	-4,506.9	-2,429.0	225.7	0.2	225.53	1.001	Level 2	
11,700.0	6,991.4	6,924.9	6,924.9	95.4	138.5	90.19	-4,506.9	-2,429.0	161.6	-65.8	227.41	0.711	Level 1	
11,774.2	6,990.9	6,924.4	6,924.4	96.6	138.5	90.00	-4,506.9	-2,429.0	143.6	-85.2	228.80	0.627	Level 1, CC, ES, SF	
11,800.0	6,990.7	6,924.2	6,924.2	97.1	138.5	89.93	-4,506.9	-2,429.0	145.9	-83.4	229.28	0.636	Level 1	
11,900.0	6,990.1	6,923.6	6,923.6	98.8	138.5	89.67	-4,506.9	-2,429.0	190.9	-40.3	231.16	0.826	Level 1	
11,911.0	6,990.0	6,923.5	6,923.5	99.0	138.5	89.65	-4,506.9	-2,429.0	198.3	-33.1	231.37	0.857	Level 1	

Company:	Bayswater Exploration & Production, LLC	Local Co-ordinate Reference:	Well Mojack C-28HN
Project:	SEC.28-T7N-R64W	TVD Reference:	WELL @ 4906.5ft (RKB - 22.5')
Reference Site:	Mojack 28-C Pad (West) Sec.28-T7N-R64W	MD Reference:	WELL @ 4906.5ft (RKB - 22.5')
Site Error:	0.0ft	North Reference:	True
Reference Well:	Mojack C-28HN	Survey Calculation Method:	Minimum Curvature
Well Error:	0.0ft	Output errors are at	2.00 sigma
Reference Wellbore	Wellbore #1	Database:	Landmark
Reference Design:	Plan #1 (4-08-14)	Offset TVD Reference:	Offset Datum

Offset Design Existing Wells Pad Sec.28-T7N-R64W - Rich 4-28 (Exist) - Wellbore #1 - Wellbore #1												Offset Site Error:	0.0 ft
Survey Program: 7404-UNKNOWN												Offset Well Error:	0.0 ft
Reference		Offset		Semi Major Axis			Distance						Warning
Measured Depth (ft)	Vertical Depth (ft)	Measured Depth (ft)	Vertical Depth (ft)	Reference (ft)	Offset (ft)	Highside Toolface (°)	Offset Wellbore Centre +N/-S (ft)	+E/-W (ft)	Between Centres (ft)	Between Ellipses (ft)	Minimum Separation (ft)	Separation Factor	
5,400.0	5,155.3	5,108.8	5,108.8	32.0	102.2	-41.32	-481.9	-2,257.7	988.2	865.5	122.72	8.053	
5,500.0	5,249.4	5,202.9	5,202.9	32.8	104.1	-42.62	-481.9	-2,257.7	962.4	836.8	125.58	7.663	
5,600.0	5,343.5	5,297.0	5,297.0	33.5	105.9	-43.98	-481.9	-2,257.7	937.0	808.5	128.49	7.292	
5,700.0	5,437.6	5,391.1	5,391.1	34.2	107.8	-45.42	-481.9	-2,257.7	912.2	780.8	131.45	6.940	
5,800.0	5,531.7	5,485.2	5,485.2	34.9	109.7	-46.92	-481.9	-2,257.7	888.0	753.6	134.45	6.605	
5,900.0	5,625.8	5,579.3	5,579.3	35.7	111.6	-48.51	-481.9	-2,257.7	864.5	727.0	137.51	6.287	
6,000.0	5,719.9	5,673.4	5,673.4	36.4	113.5	-50.18	-481.9	-2,257.7	841.7	701.1	140.61	5.986	
6,100.0	5,814.0	5,767.5	5,767.5	37.1	115.3	-51.93	-481.9	-2,257.7	819.6	675.8	143.76	5.701	
6,200.0	5,908.0	5,861.5	5,861.5	37.9	117.2	-53.77	-481.9	-2,257.7	798.4	651.4	146.95	5.433	
6,300.0	6,002.1	5,955.6	5,955.6	38.6	119.1	-55.70	-481.9	-2,257.7	778.0	627.8	150.19	5.180	
6,400.0	6,096.2	6,049.7	6,049.7	39.3	121.0	-57.73	-481.9	-2,257.7	758.6	605.2	153.46	4.944	
6,500.0	6,190.3	6,143.8	6,143.8	40.0	122.9	-59.85	-481.9	-2,257.7	740.3	583.5	156.76	4.722	
6,600.0	6,284.4	6,237.9	6,237.9	40.8	124.8	-62.06	-481.9	-2,257.7	723.1	563.0	160.09	4.517	
6,700.0	6,378.5	6,332.0	6,332.0	41.5	126.6	-64.37	-481.9	-2,257.7	707.1	543.7	163.42	4.327	
6,800.0	6,472.6	6,426.1	6,426.1	42.2	128.5	-66.77	-481.9	-2,257.7	692.4	525.6	166.76	4.152	
6,900.0	6,566.6	6,520.1	6,520.1	42.9	130.4	-69.01	-481.9	-2,257.7	673.3	507.5	169.83	4.060	
7,000.0	6,658.2	6,611.7	6,611.7	43.4	132.2	-71.33	-481.9	-2,257.7	658.9	488.1	172.80	3.973	
7,100.0	6,744.2	6,697.7	6,697.7	43.9	134.0	-73.66	-481.9	-2,257.7	644.4	468.4	175.64	3.890	
7,200.0	6,821.3	6,774.8	6,774.8	44.4	135.5	-75.99	-481.9	-2,257.7	629.9	448.7	178.38	3.807	
7,300.0	6,896.8	6,840.3	6,840.3	44.8	136.8	-78.32	-481.9	-2,257.7	615.4	429.0	181.02	3.724	
7,400.0	6,973.8	6,917.8	6,917.8	45.1	137.8	-80.65	-481.9	-2,257.7	600.9	409.3	183.57	3.641	
7,500.0	6,973.8	6,927.3	6,927.3	45.3	138.5	-82.98	-481.9	-2,257.7	586.4	389.6	186.02	3.558	
7,600.0	6,993.8	6,947.3	6,947.3	45.5	138.9	-85.31	-481.9	-2,257.7	571.9	369.9	188.38	3.475	
7,700.0	7,009.1	6,962.6	6,962.6	45.8	139.3	-87.64	-481.9	-2,257.7	557.4	350.2	190.64	3.392	
7,745.3	7,013.3	6,966.8	6,966.8	46.0	139.3	-89.97	-481.9	-2,257.7	542.9	330.5	192.80	3.309	
7,800.0	7,016.0	6,969.5	6,969.5	46.1	139.4	-92.30	-481.9	-2,257.7	528.4	310.8	194.87	3.226	
7,900.0	7,016.0	6,969.5	6,969.5	46.5	139.4	-94.63	-481.9	-2,257.7	513.9	291.1	196.84	3.143	
8,000.0	7,015.4	6,968.9	6,968.9	47.0	139.4	-96.96	-481.9	-2,257.7	500.0	271.4	198.71	3.060	
8,100.0	7,014.7	6,968.2	6,968.2	47.5	139.4	-99.29	-481.9	-2,257.7	485.5	251.7	200.48	2.977	
8,200.0	7,014.1	6,967.6	6,967.6	48.1	139.4	-101.62	-481.9	-2,257.7	471.0	232.0	202.15	2.894	
8,300.0	7,013.4	6,966.9	6,966.9	48.7	139.3	-103.95	-481.9	-2,257.7	456.5	212.3	203.72	2.811	
8,400.0	7,012.8	6,966.3	6,966.3	49.4	139.3	-106.28	-481.9	-2,257.7	442.0	192.6	205.19	2.728	
8,500.0	7,012.1	6,965.6	6,965.6	50.2	139.3	-108.61	-481.9	-2,257.7	427.5	172.9	206.56	2.645	
8,600.0	7,011.5	6,965.0	6,965.0	51.0	139.3	-110.94	-481.9	-2,257.7	413.0	153.2	207.83	2.562	
8,700.0	7,010.8	6,964.3	6,964.3	51.9	139.3	-113.27	-481.9	-2,257.7	398.5	133.5	209.00	2.479	

Company:	Bayswater Exploration & Production, LLC	Local Co-ordinate Reference:	Well Mojack C-28HN
Project:	SEC.28-T7N-R64W	TVD Reference:	WELL @ 4906.5ft (RKB - 22.5')
Reference Site:	Mojack 28-C Pad (West) Sec.28-T7N-R64W	MD Reference:	WELL @ 4906.5ft (RKB - 22.5')
Site Error:	0.0ft	North Reference:	True
Reference Well:	Mojack C-28HN	Survey Calculation Method:	Minimum Curvature
Well Error:	0.0ft	Output errors are at	2.00 sigma
Reference Wellbore	Wellbore #1	Database:	Landmark
Reference Design:	Plan #1 (4-08-14)	Offset TVD Reference:	Offset Datum

Offset Design Mojack 28-C Pad (West) Sec.28-T7N-R64W - Mojack A-28HN - Wellbore #1 - Plan #1 (4-08-14)													Offset Site Error:	0.0 ft
Survey Program: 0-MWWD													Offset Well Error:	0.0 ft
Reference	Offset	Semi Major Axis		Distance										Warning
Measured Depth (ft)	Vertical Depth (ft)	Measured Depth (ft)	Vertical Depth (ft)	Reference (ft)	Offset (ft)	Highside Toolface (°)	Offset Wellbore Centre +N/-S (ft)	+E/-W (ft)	Between Centres (ft)	Between Ellipses (ft)	Minimum Separation (ft)	Separation Factor		
0.0	0.0	0.0	0.0	0.0	0.0	-91.16	-0.7	-35.8	35.9					
100.0	100.0	100.0	100.0	0.1	0.1	-91.16	-0.7	-35.8	35.9	35.6	0.22	159.528		
200.0	200.0	200.0	200.0	0.3	0.3	-91.16	-0.7	-35.8	35.9	35.2	0.67	53.176 CC, ES		
300.0	300.0	298.7	298.7	0.6	0.6	-90.99	-0.6	-37.5	37.6	36.5	1.11	33.802		
400.0	400.0	397.2	397.1	0.8	0.8	-90.56	-0.4	-42.6	42.7	41.2	1.56	27.446		
500.0	500.0	495.2	494.7	1.0	1.0	-90.05	0.0	-51.0	51.3	49.3	2.03	25.295		
600.0	600.0	592.6	591.4	1.2	1.3	-89.56	0.5	-62.7	63.3	60.7	2.53	24.978		
700.0	700.0	689.3	686.9	1.4	1.6	-2.99	1.1	-77.5	76.9	74.0	2.91	26.448		
800.0	799.8	785.6	781.5	1.7	2.0	-2.79	2.0	-95.4	90.4	87.0	3.34	27.031		
900.0	899.5	881.4	875.0	1.9	2.4	-2.67	2.9	-116.4	103.7	99.9	3.79	27.353		
1,000.0	998.7	976.9	967.4	2.2	2.9	-2.62	4.0	-140.4	116.9	112.7	4.25	27.488		
1,100.0	1,097.5	1,071.9	1,058.5	2.4	3.4	-2.61	5.2	-167.4	129.9	125.2	4.73	27.479		
1,200.0	1,195.6	1,166.6	1,148.4	2.8	4.0	-2.63	6.5	-197.2	142.8	137.6	5.22	27.354		
1,300.0	1,293.1	1,260.9	1,236.8	3.2	4.7	-2.67	8.0	-229.8	155.5	149.8	5.73	27.126		
1,400.0	1,389.6	1,354.8	1,323.8	3.7	5.4	-2.73	9.6	-265.2	168.0	161.7	6.25	26.888		
1,500.0	1,485.3	1,452.2	1,413.0	4.2	6.2	-2.81	11.3	-304.2	179.5	172.7	6.81	26.365		
1,600.0	1,579.8	1,551.9	1,504.3	4.8	7.1	-2.94	13.1	-344.3	187.8	180.4	7.39	25.413		
1,700.0	1,673.9	1,651.6	1,595.6	5.5	7.9	-3.09	15.0	-384.4	194.7	186.7	8.02	24.274		
1,800.0	1,768.0	1,751.4	1,686.9	6.1	8.8	-3.22	16.8	-424.5	201.6	192.9	8.66	23.275		
1,900.0	1,862.1	1,851.2	1,778.2	6.8	9.6	-3.35	18.6	-464.6	208.5	199.2	9.31	22.395		
2,000.0	1,956.2	1,950.9	1,869.6	7.5	10.5	-3.47	20.4	-504.8	215.4	205.4	9.97	21.616		
2,100.0	2,050.3	2,050.7	1,960.9	8.2	11.3	-3.58	22.2	-544.9	222.3	211.7	10.63	20.923		
2,200.0	2,144.4	2,150.5	2,052.2	8.9	12.2	-3.69	24.0	-585.0	229.2	217.9	11.29	20.303		
2,300.0	2,238.5	2,250.2	2,143.5	9.6	13.1	-3.79	25.8	-625.1	236.1	224.2	11.96	19.745		
2,400.0	2,332.6	2,350.0	2,234.9	10.3	13.9	-3.88	27.6	-665.2	243.0	230.4	12.63	19.242		
2,500.0	2,426.6	2,449.7	2,326.2	11.0	14.8	-3.97	29.4	-705.3	249.9	236.6	13.30	18.785		
2,600.0	2,520.7	2,549.5	2,417.5	11.8	15.7	-4.05	31.2	-745.4	256.8	242.8	13.98	18.370		
2,700.0	2,614.8	2,649.3	2,508.8	12.5	16.6	-4.13	33.0	-785.5	263.7	249.1	14.66	17.990		
2,800.0	2,708.9	2,749.0	2,600.2	13.2	17.4	-4.21	34.8	-825.6	270.6	255.3	15.34	17.642		
2,900.0	2,803.0	2,848.8	2,691.5	13.9	18.3	-4.28	36.6	-865.8	277.5	261.5	16.02	17.322		
3,000.0	2,897.1	2,948.5	2,782.8	14.6	19.2	-4.35	38.4	-905.9	284.5	267.7	16.71	17.026		
3,100.0	2,991.2	3,048.3	2,874.1	15.3	20.0	-4.41	40.2	-946.0	291.4	274.0	17.39	16.752		
3,200.0	3,085.3	3,148.1	2,965.5	16.1	20.9	-4.47	42.0	-986.1	298.3	280.2	18.08	16.498		
3,300.0	3,179.4	3,247.8	3,056.8	16.8	21.8	-4.53	43.8	-1,026.2	305.2	286.4	18.77	16.262		
3,400.0	3,273.5	3,347.6	3,148.1	17.5	22.7	-4.59	45.6	-1,066.3	312.1	292.6	19.45	16.041		
3,500.0	3,367.6	3,447.3	3,239.4	18.2	23.5	-4.64	47.4	-1,106.4	319.0	298.8	20.14	15.835		
3,600.0	3,461.7	3,547.1	3,330.7	19.0	24.4	-4.69	49.2	-1,146.5	325.9	305.1	20.83	15.642		
3,700.0	3,555.8	3,646.9	3,422.1	19.7	25.3	-4.74	51.0	-1,186.6	332.8	311.3	21.53	15.461		
3,800.0	3,649.8	3,746.6	3,513.4	20.4	26.1	-4.79	52.8	-1,226.7	339.7	317.5	22.22	15.290		
3,900.0	3,743.9	3,846.4	3,604.7	21.1	27.0	-4.83	54.6	-1,266.9	346.6	323.7	22.91	15.130		
4,000.0	3,838.0	3,946.1	3,696.0	21.9	27.9	-4.88	56.4	-1,307.0	353.5	329.9	23.60	14.978		
4,100.0	3,932.1	4,045.9	3,787.4	22.6	28.8	-4.92	58.2	-1,347.1	360.4	336.1	24.30	14.835		
4,200.0	4,026.2	4,145.7	3,878.7	23.3	29.6	-4.96	60.0	-1,387.2	367.4	342.4	24.99	14.700		
4,300.0	4,120.3	4,245.4	3,970.0	24.0	30.5	-5.00	61.9	-1,427.3	374.3	348.6	25.68	14.571		
4,400.0	4,214.4	4,345.2	4,061.3	24.8	31.4	-5.04	63.7	-1,467.4	381.2	354.8	26.38	14.449		
4,500.0	4,308.5	4,444.9	4,152.7	25.5	32.3	-5.07	65.5	-1,507.5	388.1	361.0	27.07	14.334		
4,600.0	4,402.6	4,544.7	4,244.0	26.2	33.1	-5.11	67.3	-1,547.6	395.0	367.2	27.77	14.223		
4,700.0	4,496.7	4,644.5	4,335.3	26.9	34.0	-5.14	69.1	-1,587.7	401.9	373.4	28.47	14.118		
4,800.0	4,590.8	4,744.2	4,426.6	27.7	34.9	-5.17	70.9	-1,627.9	408.8	379.6	29.16	14.018		
4,900.0	4,684.9	4,844.0	4,518.0	28.4	35.8	-5.21	72.7	-1,668.0	415.7	385.9	29.86	13.922		
5,000.0	4,778.9	4,943.7	4,609.3	29.1	36.6	-5.24	74.5	-1,708.1	422.6	392.1	30.56	13.831		
5,100.0	4,873.0	5,043.5	4,700.6	29.8	37.5	-5.27	76.3	-1,748.2	429.5	398.3	31.25	13.743		

CC - Min centre to center distance or convergent point, SF - min separation factor, ES - min ellipse separation

Company:	Bayswater Exploration & Production, LLC	Local Co-ordinate Reference:	Well Mojack C-28HN
Project:	SEC.28-T7N-R64W	TVD Reference:	WELL @ 4906.5ft (RKB - 22.5')
Reference Site:	Mojack 28-C Pad (West) Sec.28-T7N-R64W	MD Reference:	WELL @ 4906.5ft (RKB - 22.5')
Site Error:	0.0ft	North Reference:	True
Reference Well:	Mojack C-28HN	Survey Calculation Method:	Minimum Curvature
Well Error:	0.0ft	Output errors are at	2.00 sigma
Reference Wellbore	Wellbore #1	Database:	Landmark
Reference Design:	Plan #1 (4-08-14)	Offset TVD Reference:	Offset Datum

Offset Design Mojack 28-C Pad (West) Sec.28-T7N-R64W - Mojack A-28HN - Wellbore #1 - Plan #1 (4-08-14)												Offset Site Error:	0.0 ft
Survey Program: 0-MWMD												Offset Well Error:	0.0 ft
Reference		Offset		Semi Major Axis			Distance						
Measured Depth (ft)	Vertical Depth (ft)	Measured Depth (ft)	Vertical Depth (ft)	Reference (ft)	Offset (ft)	Highside Toolface (°)	Offset Wellbore Centre +N/-S (ft)	+E/-W (ft)	Between Centres (ft)	Between Ellipses (ft)	Minimum Separation (ft)	Separation Factor	Warning
5,200.0	4,967.1	5,143.3	4,791.9	30.6	38.4	-5.29	78.1	-1,788.3	436.5	404.5	31.95	13.660	
5,300.0	5,061.2	5,243.0	4,883.3	31.3	39.3	-5.32	79.9	-1,828.4	443.4	410.7	32.65	13.579	
5,400.0	5,155.3	5,342.8	4,974.6	32.0	40.1	-5.35	81.7	-1,868.5	450.3	416.9	33.35	13.502	
5,500.0	5,249.4	5,442.6	5,065.9	32.8	41.0	-5.37	83.5	-1,908.6	457.2	423.1	34.05	13.428	
5,600.0	5,343.5	5,542.3	5,157.2	33.5	41.9	-5.40	85.3	-1,948.7	464.1	429.4	34.75	13.357	
5,700.0	5,437.6	5,642.1	5,248.6	34.2	42.8	-5.42	87.1	-1,988.9	471.0	435.6	35.44	13.289	
5,800.0	5,531.7	5,741.8	5,339.9	34.9	43.6	-5.45	88.9	-2,029.0	477.9	441.8	36.14	13.223	
5,900.0	5,625.8	5,841.6	5,431.2	35.7	44.5	-5.47	90.7	-2,069.1	484.8	448.0	36.84	13.160	
6,000.0	5,719.9	5,941.4	5,522.5	36.4	45.4	-5.49	92.5	-2,109.2	491.7	454.2	37.54	13.099	
6,100.0	5,814.0	6,041.1	5,613.8	37.1	46.3	-5.52	94.3	-2,149.3	498.7	460.4	38.24	13.040	
6,200.0	5,908.0	6,140.9	5,705.2	37.9	47.1	-5.54	96.1	-2,189.4	505.6	466.6	38.94	12.983	
6,300.0	6,002.1	6,240.6	5,796.5	38.6	48.0	-5.56	97.9	-2,229.5	512.5	472.8	39.64	12.928	
6,400.0	6,096.2	6,340.4	5,887.8	39.3	48.9	-5.58	99.7	-2,269.6	519.4	479.1	40.34	12.875	
6,500.0	6,190.3	6,440.2	5,979.1	40.0	49.8	-5.60	101.5	-2,309.7	526.3	485.3	41.04	12.824	
6,600.0	6,284.4	6,539.9	6,070.5	40.8	50.6	-5.62	103.3	-2,349.8	533.2	491.5	41.74	12.774	
6,700.0	6,378.5	6,639.7	6,161.8	41.5	51.5	-5.63	105.1	-2,390.0	540.1	497.7	42.44	12.726	
6,800.0	6,472.6	6,739.4	6,253.1	42.2	52.4	-5.65	106.9	-2,430.1	547.0	503.9	43.14	12.680	
6,900.0	6,566.6	6,838.9	6,344.2	42.9	53.3	-5.67	108.7	-2,470.1	553.9	510.1	43.84	12.646	
7,000.0	6,658.2	6,935.4	6,432.5	43.4	54.1	-5.69	110.5	-2,509.9	560.9	516.8	44.14	12.709	
7,100.0	6,744.2	7,025.4	6,514.9	43.9	54.9	-5.71	112.1	-2,545.1	570.4	525.8	44.59	12.791	
7,200.0	6,821.3	7,112.9	6,595.0	44.4	55.6	-5.73	112.9	-2,580.2	585.3	540.0	45.32	12.914	
7,300.0	6,886.8	7,226.6	6,698.0	44.8	56.5	-5.75	96.3	-2,624.8	605.5	559.4	46.18	13.114	
7,400.0	6,938.3	7,368.4	6,818.4	45.1	57.3	-5.77	42.3	-2,675.7	628.5	582.0	46.57	13.497	
7,500.0	6,973.8	7,554.1	6,948.5	45.3	58.2	-5.79	-77.6	-2,728.7	650.0	604.0	46.01	14.126	
7,600.0	6,993.8	7,793.5	7,046.9	45.5	58.9	-5.81	-290.5	-2,764.5	662.1	616.1	45.97	14.401	
7,700.0	7,009.1	7,910.1	7,067.7	45.8	59.1	-5.83	-405.2	-2,769.7	662.4	615.1	47.31	14.002	
7,800.0	7,016.0	8,015.7	7,079.7	46.1	59.4	-5.85	-509.9	-2,774.2	662.8	614.2	48.60	13.638	
7,900.0	7,016.0	8,121.4	7,082.1	46.5	59.7	-5.87	-615.4	-2,778.7	663.0	612.7	50.32	13.175	
8,000.0	7,015.4	8,221.4	7,080.3	47.0	60.0	-5.89	-715.3	-2,783.0	662.9	610.5	52.45	12.638	
8,100.0	7,014.7	8,321.4	7,078.4	47.5	60.4	-5.91	-815.2	-2,787.3	662.8	608.0	54.77	12.103	
8,200.0	7,014.1	8,421.4	7,076.6	48.1	60.8	-5.93	-915.1	-2,791.6	662.7	605.5	57.24	11.577	
8,300.0	7,013.4	8,521.4	7,074.7	48.7	61.3	-5.95	-1,015.0	-2,795.9	662.6	602.7	59.86	11.069	
8,400.0	7,012.8	8,621.4	7,072.9	49.4	61.8	-5.97	-1,114.9	-2,800.2	662.5	599.9	62.60	10.582	
8,500.0	7,012.1	8,721.4	7,071.0	50.2	62.3	-5.99	-1,214.7	-2,804.4	662.4	596.9	65.46	10.119	
8,600.0	7,011.5	8,821.4	7,069.2	51.0	62.9	-6.01	-1,314.6	-2,808.7	662.3	593.9	68.41	9.681	
8,700.0	7,010.8	8,921.3	7,067.3	51.9	63.6	-6.03	-1,414.5	-2,813.0	662.2	590.7	71.45	9.268	
8,800.0	7,010.2	9,021.3	7,065.5	52.9	64.3	-6.05	-1,514.4	-2,817.3	662.1	587.5	74.56	8.880	
8,900.0	7,009.5	9,121.3	7,063.6	53.9	65.0	-6.07	-1,614.3	-2,821.6	662.0	584.2	77.73	8.516	
9,000.0	7,008.9	9,221.3	7,061.8	54.9	65.8	-6.09	-1,714.2	-2,825.9	661.9	580.9	80.97	8.175	
9,100.0	7,008.2	9,321.3	7,059.9	56.0	66.6	-6.11	-1,814.0	-2,830.2	661.8	577.5	84.25	7.855	
9,200.0	7,007.6	9,421.3	7,058.1	57.2	67.5	-6.13	-1,913.9	-2,834.5	661.7	574.1	87.59	7.555	
9,300.0	7,006.9	9,521.3	7,056.2	58.4	68.4	-6.15	-2,013.8	-2,838.8	661.6	570.7	90.96	7.274	
9,400.0	7,006.3	9,621.3	7,054.4	59.7	69.4	-6.17	-2,113.7	-2,843.0	661.5	567.2	94.37	7.010	
9,500.0	7,005.6	9,721.3	7,052.5	60.9	70.4	-6.19	-2,213.6	-2,847.3	661.4	563.6	97.81	6.763	
9,600.0	7,005.0	9,821.3	7,050.6	62.3	71.5	-6.21	-2,313.5	-2,851.6	661.4	560.1	101.28	6.530	
9,700.0	7,004.3	9,921.3	7,048.8	63.6	72.5	-6.23	-2,413.3	-2,855.9	661.3	556.5	104.78	6.311	
9,800.0	7,003.7	10,021.3	7,046.9	65.0	73.7	-6.25	-2,513.2	-2,860.2	661.2	552.9	108.30	6.105	
9,900.0	7,003.0	10,121.3	7,045.1	66.4	74.8	-6.27	-2,613.1	-2,864.5	661.1	549.3	111.84	5.911	
10,000.0	7,002.4	10,221.3	7,043.2	67.9	76.1	-6.29	-2,713.0	-2,868.8	661.1	545.7	115.41	5.728	
10,100.0	7,001.7	10,321.2	7,041.4	69.4	77.3	-6.31	-2,812.9	-2,873.1	661.0	542.0	118.99	5.555	
10,200.0	7,001.1	10,421.2	7,039.5	70.9	78.6	-6.33	-2,912.8	-2,877.3	660.9	538.3	122.59	5.391	
10,300.0	7,000.4	10,521.2	7,037.7	72.4	79.9	-6.35	-3,012.6	-2,881.6	660.9	534.7	126.20	5.237	

CC - Min centre to center distance or convergent point, SF - min separation factor, ES - min ellipse separation

Company:	Bayswater Exploration & Production, LLC	Local Co-ordinate Reference:	Well Mojack C-28HN
Project:	SEC.28-T7N-R64W	TVD Reference:	WELL @ 4906.5ft (RKB - 22.5')
Reference Site:	Mojack 28-C Pad (West) Sec.28-T7N-R64W	MD Reference:	WELL @ 4906.5ft (RKB - 22.5')
Site Error:	0.0ft	North Reference:	True
Reference Well:	Mojack C-28HN	Survey Calculation Method:	Minimum Curvature
Well Error:	0.0ft	Output errors are at	2.00 sigma
Reference Wellbore	Wellbore #1	Database:	Landmark
Reference Design:	Plan #1 (4-08-14)	Offset TVD Reference:	Offset Datum

Offset Design Mojack 28-C Pad (West) Sec.28-T7N-R64W - Mojack A-28HN - Wellbore #1 - Plan #1 (4-08-14)												Offset Site Error:	0.0 ft
Survey Program: 0-MWD												Offset Well Error:	0.0 ft
Reference		Offset		Semi Major Axis			Distance						Warning
Measured Depth (ft)	Vertical Depth (ft)	Measured Depth (ft)	Vertical Depth (ft)	Reference (ft)	Offset (ft)	Highside Toolface (°)	Offset Wellbore Centre +N/-S (ft)	+E/-W (ft)	Between Centres (ft)	Between Ellipses (ft)	Minimum Separation (ft)	Separation Factor	
10,400.0	6,999.8	10,621.2	7,035.8	73.9	81.2	93.13	-3,112.5	-2,885.9	660.8	531.0	129.83	5.090	
10,500.0	6,999.1	10,721.2	7,034.0	75.5	82.5	93.02	-3,212.4	-2,890.2	660.7	527.3	133.47	4.951	
10,600.0	6,998.5	10,821.2	7,032.1	77.1	83.9	92.92	-3,312.3	-2,894.5	660.7	523.6	137.12	4.818	
10,700.0	6,997.9	10,921.2	7,030.3	78.7	85.3	92.81	-3,412.2	-2,898.8	660.6	519.8	140.78	4.692	
10,800.0	6,997.2	11,021.2	7,028.4	80.3	86.8	92.71	-3,512.1	-2,903.1	660.6	516.1	144.45	4.573	
10,900.0	6,996.6	11,121.2	7,026.6	81.9	88.2	92.61	-3,611.9	-2,907.4	660.5	512.4	148.14	4.459	
11,000.0	6,995.9	11,221.2	7,024.7	83.5	89.7	92.50	-3,711.8	-2,911.6	660.5	508.6	151.82	4.350	
11,100.0	6,995.3	11,321.2	7,022.9	85.2	91.2	92.40	-3,811.7	-2,915.9	660.4	504.9	155.52	4.246	
11,200.0	6,994.6	11,421.2	7,021.0	86.9	92.7	92.29	-3,911.6	-2,920.2	660.4	501.1	159.23	4.147	
11,300.0	6,994.0	11,521.2	7,019.2	88.5	94.2	92.19	-4,011.5	-2,924.5	660.3	497.4	162.94	4.053	
11,400.0	6,993.3	11,621.2	7,017.3	90.2	95.8	92.08	-4,111.4	-2,928.8	660.3	493.6	166.66	3.962	
11,500.0	6,992.7	11,721.1	7,015.5	91.9	97.3	91.98	-4,211.2	-2,933.1	660.2	489.9	170.38	3.875	
11,600.0	6,992.0	11,821.1	7,013.6	93.6	98.9	91.87	-4,311.1	-2,937.4	660.2	486.1	174.11	3.792	
11,700.0	6,991.4	11,921.1	7,011.8	95.4	100.5	91.77	-4,411.0	-2,941.7	660.2	482.3	177.85	3.712	
11,800.0	6,990.7	12,021.1	7,009.9	97.1	102.1	91.67	-4,510.9	-2,945.9	660.1	478.5	181.59	3.635	
11,900.0	6,990.1	12,121.1	7,008.1	98.8	103.8	91.56	-4,610.8	-2,950.2	660.1	474.8	185.26	3.563	
11,911.0	6,990.0	12,132.1	7,007.9	99.0	104.0	91.55	-4,621.7	-2,950.7	660.1	474.5	185.63	3.556 SF	

Company:	Bayswater Exploration & Production, LLC	Local Co-ordinate Reference:	Well Mojack C-28HN
Project:	SEC.28-T7N-R64W	TVD Reference:	WELL @ 4906.5ft (RKB - 22.5')
Reference Site:	Mojack 28-C Pad (West) Sec.28-T7N-R64W	MD Reference:	WELL @ 4906.5ft (RKB - 22.5')
Site Error:	0.0ft	North Reference:	True
Reference Well:	Mojack C-28HN	Survey Calculation Method:	Minimum Curvature
Well Error:	0.0ft	Output errors are at	2.00 sigma
Reference Wellbore	Wellbore #1	Database:	Landmark
Reference Design:	Plan #1 (4-08-14)	Offset TVD Reference:	Offset Datum

Offset Design Mojack 28-C Pad (West) Sec.28-T7N-R64W - Mojack B-28HN - Wellbore #1 - Plan #1 (4-08-14)													Offset Site Error:	0.0 ft
Survey Program: 0-MWID													Offset Well Error:	0.0 ft
Reference	Offset	Semi Major Axis			Distance									
Measured Depth (ft)	Vertical Depth (ft)	Measured Depth (ft)	Vertical Depth (ft)	Reference (ft)	Offset (ft)	Highside Toolface (°)	Offset Wellbore Centre +N/-S (ft)	+E/-W (ft)	Between Centres (ft)	Between Ellipses (ft)	Minimum Separation (ft)	Separation Factor	Warning	
0.0	0.0	0.0	0.0	0.0	0.0	-91.17	-0.4	-17.8	17.8	17.8	0.00	N/A		
100.0	100.0	100.0	100.0	0.1	0.1	-91.17	-0.4	-17.8	17.8	17.6	0.22	79.146		
200.0	200.0	200.0	200.0	0.3	0.3	-91.17	-0.4	-17.8	17.8	17.1	0.67	26.382		
300.0	300.0	300.0	300.0	0.6	0.6	-91.17	-0.4	-17.8	17.8	16.7	1.12	15.829		
400.0	400.0	400.0	400.0	0.8	0.8	-91.17	-0.4	-17.8	17.8	16.2	1.57	11.307 CC, ES		
500.0	500.0	499.3	499.3	1.0	1.0	-90.80	-0.3	-19.5	19.5	17.5	2.01	9.708		
600.0	600.0	598.5	598.3	1.2	1.2	-89.98	0.0	-24.6	24.7	22.3	2.45	10.088		
700.0	700.0	697.2	696.7	1.4	1.4	-3.13	0.5	-33.2	31.6	28.7	2.87	11.001		
800.0	799.8	795.8	794.5	1.7	1.7	-2.78	1.1	-45.0	38.5	35.2	3.29	11.675		
900.0	899.5	894.1	891.7	1.9	2.0	-2.59	1.9	-60.2	45.3	41.5	3.72	12.150		
1,000.0	998.7	992.2	988.0	2.2	2.4	-2.49	2.9	-78.7	52.0	47.8	4.17	12.481		
1,100.0	1,097.5	1,090.1	1,083.5	2.4	2.8	-2.46	4.1	-100.4	58.7	54.0	4.62	12.700		
1,200.0	1,195.6	1,187.8	1,177.9	2.8	3.3	-2.47	5.5	-125.3	65.3	60.2	5.09	12.831		
1,300.0	1,293.1	1,285.3	1,271.2	3.2	3.8	-2.51	7.0	-153.3	71.8	66.2	5.57	12.888		
1,400.0	1,389.6	1,382.5	1,363.4	3.7	4.4	-2.57	8.7	-184.4	78.2	72.1	6.07	12.881		
1,500.0	1,485.3	1,479.6	1,454.2	4.2	5.1	-2.65	10.5	-218.5	84.5	77.9	6.59	12.826		
1,600.0	1,579.8	1,579.3	1,546.8	4.8	5.8	-2.79	12.5	-255.3	89.3	82.1	7.14	12.509		
1,700.0	1,673.9	1,679.2	1,639.7	5.5	6.6	-2.96	14.6	-292.2	92.6	84.9	7.74	11.960		
1,800.0	1,768.0	1,779.2	1,732.6	6.1	7.3	-3.12	16.6	-329.1	96.0	87.6	8.36	11.478		
1,900.0	1,862.1	1,879.1	1,825.4	6.8	8.1	-3.26	18.6	-366.0	99.3	90.3	8.99	11.052		
2,000.0	1,956.2	1,979.0	1,918.3	7.5	8.9	-3.40	20.6	-402.9	102.7	93.0	9.62	10.673		
2,100.0	2,050.3	2,079.0	2,011.1	8.2	9.7	-3.53	22.6	-439.8	106.0	95.8	10.26	10.334		
2,200.0	2,144.4	2,178.9	2,104.0	8.9	10.4	-3.65	24.6	-476.7	109.4	98.5	10.90	10.031		
2,300.0	2,238.5	2,278.9	2,196.8	9.6	11.2	-3.76	26.6	-513.6	112.7	101.2	11.55	9.758		
2,400.0	2,332.6	2,378.8	2,289.7	10.3	12.0	-3.87	28.6	-550.5	116.1	103.9	12.20	9.511		
2,500.0	2,426.6	2,478.8	2,382.6	11.0	12.8	-3.97	30.6	-587.5	119.4	106.6	12.86	9.287		
2,600.0	2,520.7	2,578.7	2,475.4	11.8	13.6	-4.07	32.6	-624.4	122.8	109.2	13.52	9.083		
2,700.0	2,614.8	2,678.6	2,568.3	12.5	14.4	-4.16	34.6	-661.3	126.1	111.9	14.18	8.896		
2,800.0	2,708.9	2,778.6	2,661.1	13.2	15.2	-4.24	36.6	-698.2	129.5	114.6	14.84	8.725		
2,900.0	2,803.0	2,878.5	2,754.0	13.9	16.0	-4.32	38.6	-735.1	132.8	117.3	15.50	8.567		
3,000.0	2,897.1	2,978.5	2,846.9	14.6	16.8	-4.40	40.6	-772.0	136.2	120.0	16.17	8.421		
3,100.0	2,991.2	3,078.4	2,939.7	15.3	17.6	-4.47	42.6	-808.9	139.5	122.7	16.84	8.287		
3,200.0	3,085.3	3,178.4	3,032.6	16.1	18.4	-4.54	44.6	-845.8	142.9	125.4	17.51	8.161		
3,300.0	3,179.4	3,278.3	3,125.4	16.8	19.2	-4.61	46.6	-882.7	146.2	128.1	18.18	8.045		
3,400.0	3,273.5	3,378.3	3,218.3	17.5	19.9	-4.67	48.6	-919.6	149.6	130.7	18.85	7.936		
3,500.0	3,367.6	3,478.2	3,311.2	18.2	20.7	-4.74	50.7	-956.5	152.9	133.4	19.52	7.834		
3,600.0	3,461.7	3,578.1	3,404.0	19.0	21.5	-4.79	52.7	-993.4	156.3	136.1	20.20	7.739		
3,700.0	3,555.8	3,678.1	3,496.9	19.7	22.3	-4.85	54.7	-1,030.3	159.7	138.8	20.87	7.650		
3,800.0	3,649.8	3,778.0	3,589.7	20.4	23.1	-4.90	56.7	-1,067.2	163.0	141.5	21.55	7.566		
3,900.0	3,743.9	3,878.0	3,682.6	21.1	23.9	-4.96	58.7	-1,104.1	166.4	144.1	22.22	7.487		
4,000.0	3,838.0	3,977.9	3,775.5	21.9	24.7	-5.00	60.7	-1,141.0	169.7	146.8	22.90	7.412		
4,100.0	3,932.1	4,077.9	3,868.3	22.6	25.5	-5.05	62.7	-1,177.9	173.1	149.5	23.58	7.341		
4,200.0	4,026.2	4,177.8	3,961.2	23.3	26.3	-5.10	64.7	-1,214.8	176.4	152.2	24.25	7.274		
4,300.0	4,120.3	4,277.7	4,054.0	24.0	27.1	-5.14	66.7	-1,251.7	179.8	154.8	24.93	7.211		
4,400.0	4,214.4	4,377.7	4,146.9	24.8	27.9	-5.18	68.7	-1,288.6	183.1	157.5	25.61	7.151		
4,500.0	4,308.5	4,477.6	4,239.7	25.5	28.7	-5.23	70.7	-1,325.5	186.5	160.2	26.29	7.094		
4,600.0	4,402.6	4,577.6	4,332.6	26.2	29.5	-5.27	72.7	-1,362.4	189.8	162.9	26.97	7.039		
4,700.0	4,496.7	4,677.5	4,425.5	26.9	30.3	-5.30	74.7	-1,399.3	193.2	165.6	27.65	6.987		
4,800.0	4,590.8	4,777.5	4,518.3	27.7	31.1	-5.34	76.7	-1,436.2	196.6	168.2	28.33	6.938		
4,900.0	4,684.9	4,877.4	4,611.2	28.4	31.9	-5.38	78.7	-1,473.1	199.9	170.9	29.01	6.891		
5,000.0	4,778.9	4,977.4	4,704.0	29.1	32.7	-5.41	80.7	-1,510.1	203.3	173.6	29.69	6.846		
5,100.0	4,873.0	5,077.3	4,796.9	29.8	33.5	-5.44	82.7	-1,547.0	206.6	176.2	30.37	6.803		

CC - Min centre to center distance or convergent point, SF - min separation factor, ES - min ellipse separation

Company:	Bayswater Exploration & Production, LLC	Local Co-ordinate Reference:	Well Mojack C-28HN
Project:	SEC.28-T7N-R64W	TVD Reference:	WELL @ 4906.5ft (RKB - 22.5')
Reference Site:	Mojack 28-C Pad (West) Sec.28-T7N-R64W	MD Reference:	WELL @ 4906.5ft (RKB - 22.5')
Site Error:	0.0ft	North Reference:	True
Reference Well:	Mojack C-28HN	Survey Calculation Method:	Minimum Curvature
Well Error:	0.0ft	Output errors are at	2.00 sigma
Reference Wellbore	Wellbore #1	Database:	Landmark
Reference Design:	Plan #1 (4-08-14)	Offset TVD Reference:	Offset Datum

Offset Design Mojack 28-C Pad (West) Sec.28-T7N-R64W - Mojack B-28HN - Wellbore #1 - Plan #1 (4-08-14)												Offset Site Error:	0.0 ft
Survey Program: 0-MWMD												Offset Well Error:	0.0 ft
Reference		Offset		Semi Major Axis			Distance						
Measured Depth (ft)	Vertical Depth (ft)	Measured Depth (ft)	Vertical Depth (ft)	Reference (ft)	Offset (ft)	Highside Toolface (°)	Offset Wellbore Centre +N/-S (ft)	+E/-W (ft)	Between Centres (ft)	Between Ellipses (ft)	Minimum Separation (ft)	Separation Factor	Warning
5,200.0	4,967.1	5,177.2	4,889.8	30.6	34.3	-5.48	84.7	-1,583.9	210.0	178.9	31.06	6.761	
5,300.0	5,061.2	5,277.2	4,982.6	31.3	35.1	-5.51	86.8	-1,620.8	213.3	181.6	31.74	6.722	
5,400.0	5,155.3	5,377.1	5,075.5	32.0	35.9	-5.54	88.8	-1,657.7	216.7	184.3	32.42	6.684	
5,500.0	5,249.4	5,477.1	5,168.3	32.8	36.7	-5.57	90.8	-1,694.6	220.0	186.9	33.10	6.647	
5,600.0	5,343.5	5,577.0	5,261.2	33.5	37.5	-5.59	92.8	-1,731.5	223.4	189.6	33.79	6.612	
5,700.0	5,437.6	5,677.0	5,354.1	34.2	38.3	-5.62	94.8	-1,768.4	226.8	192.3	34.47	6.578	
5,800.0	5,531.7	5,776.9	5,446.9	34.9	39.1	-5.65	96.8	-1,805.3	230.1	195.0	35.15	6.546	
5,900.0	5,625.8	5,876.8	5,539.8	35.7	39.9	-5.68	98.8	-1,842.2	233.5	197.6	35.84	6.515	
6,000.0	5,719.9	5,976.8	5,632.6	36.4	40.7	-5.70	100.8	-1,879.1	236.8	200.3	36.52	6.484	
6,100.0	5,814.0	6,076.7	5,725.5	37.1	41.5	-5.73	102.8	-1,916.0	240.2	203.0	37.21	6.455	
6,200.0	5,908.0	6,176.7	5,818.3	37.9	42.3	-5.75	104.8	-1,952.9	243.5	205.6	37.89	6.427	
6,300.0	6,002.1	6,276.6	5,911.2	38.6	43.1	-5.77	106.8	-1,989.8	246.9	208.3	38.58	6.400	
6,400.0	6,096.2	6,376.6	6,004.1	39.3	43.9	-5.80	108.8	-2,026.7	250.3	211.0	39.26	6.374	
6,500.0	6,190.3	6,476.5	6,096.9	40.0	44.7	-5.82	110.8	-2,063.6	253.6	213.7	39.95	6.349	
6,600.0	6,284.4	6,576.5	6,189.8	40.8	45.5	-5.84	112.8	-2,100.5	257.0	216.3	40.63	6.325	
6,700.0	6,378.5	6,676.4	6,282.6	41.5	46.3	-5.86	114.8	-2,137.4	260.3	219.0	41.32	6.301	
6,800.0	6,472.6	6,776.3	6,375.5	42.2	47.1	-5.88	116.8	-2,174.3	263.7	221.7	42.00	6.278	
6,900.0	6,566.6	6,876.0	6,468.1	42.9	47.9	-5.90	118.8	-2,211.1	267.0	224.5	42.68	6.254	
7,000.0	6,658.2	6,972.6	6,557.9	43.4	48.7	-5.92	120.8	-2,246.8	271.4	228.6	43.36	6.230	
7,100.0	6,744.2	7,073.6	6,651.5	43.9	49.4	-5.94	122.8	-2,283.8	275.8	232.8	44.04	6.206	
7,200.0	6,821.3	7,184.3	6,751.3	44.4	50.0	-5.96	124.8	-2,322.7	280.2	237.0	44.72	6.182	
7,300.0	6,886.8	7,305.9	6,852.1	44.8	50.7	-5.98	126.8	-2,361.2	284.6	241.2	45.40	6.158	
7,400.0	6,938.3	7,439.6	6,946.1	45.1	51.3	-5.99	128.8	-2,399.1	289.0	245.4	46.08	6.134	
7,500.0	6,973.8	7,585.3	7,021.6	45.3	51.8	-6.00	130.8	-2,437.0	293.4	249.6	46.76	6.110	
7,600.0	6,993.8	7,734.1	7,063.8	45.5	52.1	-6.01	132.8	-2,474.9	297.8	253.8	47.44	6.086	
7,700.0	7,009.1	7,836.5	7,081.0	45.8	52.3	-6.02	134.8	-2,512.8	302.2	258.0	48.12	6.062	
7,800.0	7,016.0	7,943.4	7,091.1	46.1	52.6	-6.03	136.8	-2,550.7	306.6	262.2	48.80	6.038	
7,900.0	7,016.0	8,047.5	7,092.2	46.5	53.0	-6.04	138.8	-2,588.6	311.0	266.4	49.48	6.014	
8,000.0	7,015.4	8,147.5	7,091.5	47.0	53.3	-6.05	140.8	-2,626.5	315.4	270.6	50.16	5.990	
8,100.0	7,014.7	8,247.5	7,090.9	47.5	53.8	-6.06	142.8	-2,664.4	319.8	274.8	50.84	5.966	
8,200.0	7,014.1	8,347.5	7,090.3	48.1	54.3	-6.07	144.8	-2,702.3	324.2	279.0	51.52	5.942	
8,300.0	7,013.4	8,447.5	7,089.7	48.7	54.8	-6.08	146.8	-2,740.2	328.6	283.2	52.20	5.918	
8,400.0	7,012.8	8,547.5	7,089.0	49.4	55.4	-6.09	148.8	-2,778.1	333.0	287.4	52.88	5.894	
8,500.0	7,012.1	8,647.5	7,088.4	50.2	56.1	-6.10	150.8	-2,816.0	337.4	291.6	53.56	5.870	
8,600.0	7,011.5	8,747.5	7,087.8	51.0	56.8	-6.11	152.8	-2,853.9	341.8	295.8	54.24	5.846	
8,700.0	7,010.8	8,847.5	7,087.2	51.9	57.5	-6.12	154.8	-2,891.8	346.2	299.9	54.92	5.822	
8,800.0	7,010.2	8,947.5	7,086.5	52.9	58.3	-6.13	156.8	-2,929.7	350.6	304.1	55.60	5.798	
8,900.0	7,009.5	9,047.5	7,085.9	53.9	59.2	-6.14	158.8	-2,967.6	355.0	308.3	56.28	5.774	
9,000.0	7,008.9	9,147.5	7,085.3	54.9	60.1	-6.15	160.8	-3,005.5	359.4	312.5	56.96	5.750	
9,100.0	7,008.2	9,247.5	7,084.7	56.0	61.1	-6.16	162.8	-3,043.4	363.8	316.7	57.64	5.726	
9,200.0	7,007.6	9,347.5	7,084.0	57.2	62.1	-6.17	164.8	-3,081.3	368.2	320.9	58.32	5.702	
9,300.0	7,006.9	9,447.5	7,083.4	58.4	63.1	-6.18	166.8	-3,119.2	372.6	325.1	59.00	5.678	
9,400.0	7,006.3	9,547.5	7,082.8	59.7	64.2	-6.19	168.8	-3,157.1	377.0	329.3	59.68	5.654	
9,500.0	7,005.6	9,647.5	7,082.2	60.9	65.4	-6.20	170.8	-3,195.0	381.4	333.5	60.36	5.630	
9,600.0	7,005.0	9,747.5	7,081.6	62.3	66.6	-6.21	172.8	-3,232.9	385.8	337.7	61.04	5.606	
9,700.0	7,004.3	9,847.5	7,080.9	63.6	67.8	-6.22	174.8	-3,270.8	390.2	341.9	61.72	5.582	
9,800.0	7,003.7	9,947.5	7,080.3	65.0	69.1	-6.23	176.8	-3,308.7	394.6	346.1	62.40	5.558	
9,900.0	7,003.0	10,047.5	7,079.7	66.4	70.4	-6.24	178.8	-3,346.6	399.0	350.3	63.08	5.534	
10,000.0	7,002.4	10,147.5	7,079.1	67.9	71.7	-6.25	180.8	-3,384.5	403.4	354.5	63.76	5.510	
10,100.0	7,001.7	10,247.5	7,078.4	69.4	73.0	-6.26	182.8	-3,422.4	407.8	358.7	64.44	5.486	
10,200.0	7,001.1	10,347.5	7,077.8	70.9	74.4	-6.27	184.8	-3,460.3	412.2	362.9	65.12	5.462	
10,300.0	7,000.4	10,447.5	7,077.2	72.4	75.8	-6.28	186.8	-3,498.2	416.6	367.1	65.80	5.438	

CC - Min centre to center distance or convergent point, SF - min separation factor, ES - min ellipse separation

Company:	Bayswater Exploration & Production, LLC	Local Co-ordinate Reference:	Well Mojack C-28HN
Project:	SEC.28-T7N-R64W	TVD Reference:	WELL @ 4906.5ft (RKB - 22.5')
Reference Site:	Mojack 28-C Pad (West) Sec.28-T7N-R64W	MD Reference:	WELL @ 4906.5ft (RKB - 22.5')
Site Error:	0.0ft	North Reference:	True
Reference Well:	Mojack C-28HN	Survey Calculation Method:	Minimum Curvature
Well Error:	0.0ft	Output errors are at	2.00 sigma
Reference Wellbore	Wellbore #1	Database:	Landmark
Reference Design:	Plan #1 (4-08-14)	Offset TVD Reference:	Offset Datum

Offset Design Mojack 28-C Pad (West) Sec.28-T7N-R64W - Mojack B-28HN - Wellbore #1 - Plan #1 (4-08-14)												Offset Site Error:	0.0 ft
Survey Program: 0-MWD												Offset Well Error:	0.0 ft
Reference		Offset		Semi Major Axis			Distance						
Measured Depth (ft)	Vertical Depth (ft)	Measured Depth (ft)	Vertical Depth (ft)	Reference (ft)	Offset (ft)	Highside Toolface (°)	Offset Wellbore Centre +N/-S (ft)	+E/-W (ft)	Between Centres (ft)	Between Ellipses (ft)	Minimum Separation (ft)	Separation Factor	Warning
10,400.0	6,999.8	10,547.5	7,076.6	73.9	77.3	103.10	-3,126.5	-2,556.4	338.8	214.5	124.29	2.726	
10,500.0	6,999.1	10,647.5	7,075.9	75.5	78.8	103.10	-3,226.4	-2,560.7	338.8	211.0	127.84	2.650	
10,600.0	6,998.5	10,747.5	7,075.3	77.1	80.2	103.10	-3,326.3	-2,565.0	338.8	207.4	131.40	2.578	
10,700.0	6,997.9	10,847.5	7,074.7	78.7	81.8	103.11	-3,426.2	-2,569.3	338.8	203.9	134.97	2.510	
10,800.0	6,997.2	10,947.5	7,074.1	80.3	83.3	103.11	-3,526.1	-2,573.5	338.8	200.3	138.54	2.446	
10,900.0	6,996.6	11,047.5	7,073.4	81.9	84.8	103.12	-3,626.0	-2,577.8	338.8	196.7	142.13	2.384	
11,000.0	6,995.9	11,147.5	7,072.8	83.5	86.4	103.12	-3,725.9	-2,582.1	338.9	193.1	145.72	2.325	
11,100.0	6,995.3	11,247.5	7,072.2	85.2	88.0	103.12	-3,825.8	-2,586.4	338.9	189.5	149.32	2.269	
11,200.0	6,994.6	11,347.5	7,071.6	86.9	89.6	103.13	-3,925.7	-2,590.7	338.9	186.0	152.92	2.216	
11,300.0	6,994.0	11,447.5	7,071.0	88.5	91.2	103.13	-4,025.6	-2,595.0	338.9	182.4	156.53	2.165	
11,400.0	6,993.3	11,547.5	7,070.3	90.2	92.8	103.14	-4,125.5	-2,599.3	338.9	178.8	160.15	2.116	
11,500.0	6,992.7	11,647.5	7,069.7	91.9	94.4	103.14	-4,225.4	-2,603.6	338.9	175.1	163.77	2.069	
11,600.0	6,992.0	11,747.5	7,069.1	93.6	96.1	103.14	-4,325.3	-2,607.9	338.9	171.5	167.40	2.025	
11,700.0	6,991.4	11,847.5	7,068.5	95.4	97.7	103.15	-4,425.2	-2,612.2	338.9	167.9	171.03	1.982	
11,800.0	6,990.7	11,947.5	7,067.8	97.1	99.4	103.15	-4,525.2	-2,616.5	338.9	164.3	174.67	1.941	
11,900.0	6,990.1	12,047.5	7,067.2	98.8	101.1	103.15	-4,625.1	-2,620.8	339.0	160.7	178.31	1.901	
11,911.0	6,990.0	12,058.5	7,067.1	99.0	101.3	103.16	-4,636.0	-2,621.2	339.0	160.3	178.71	1.897 SF	

Company:	Bayswater Exploration & Production, LLC	Local Co-ordinate Reference:	Well Mojack C-28HN
Project:	SEC.28-T7N-R64W	TVD Reference:	WELL @ 4906.5ft (RKB - 22.5')
Reference Site:	Mojack 28-C Pad (West) Sec.28-T7N-R64W	MD Reference:	WELL @ 4906.5ft (RKB - 22.5')
Site Error:	0.0ft	North Reference:	True
Reference Well:	Mojack C-28HN	Survey Calculation Method:	Minimum Curvature
Well Error:	0.0ft	Output errors are at	2.00 sigma
Reference Wellbore	Wellbore #1	Database:	Landmark
Reference Design:	Plan #1 (4-08-14)	Offset TVD Reference:	Offset Datum

Offset Design Mojack 28-C Pad (West) Sec.28-T7N-R64W - Mojack D-28HC - Wellbore #1 - Plan #1 (4-08-14)													Offset Site Error:	0.0 ft
Survey Program: 0-MW/D													Offset Well Error:	0.0 ft
Reference	Offset	Semi Major Axis		Distance										Warning
Measured Depth (ft)	Vertical Depth (ft)	Measured Depth (ft)	Vertical Depth (ft)	Reference (ft)	Offset (ft)	Highside Toolface (°)	Offset Wellbore Centre +N/-S (ft)	+E/-W (ft)	Between Centres (ft)	Between Ellipses (ft)	Minimum Separation (ft)	Separation Factor		
0.0	0.0	0.0	0.0	0.0	0.0	88.84	0.4	18.1	18.1	18.1	0.00	N/A		
100.0	100.0	100.0	100.0	0.1	0.1	88.84	0.4	18.1	18.1	17.8	0.22	80.382		
200.0	200.0	200.0	200.0	0.3	0.3	88.84	0.4	18.1	18.1	17.4	0.67	26.794		
300.0	300.0	300.0	300.0	0.6	0.6	88.84	0.4	18.1	18.1	16.9	1.12	16.076		
400.0	400.0	400.0	400.0	0.8	0.8	88.84	0.4	18.1	18.1	16.5	1.57	11.483		
500.0	500.0	500.0	500.0	1.0	1.0	88.84	0.4	18.1	18.1	16.0	2.02	8.931		
600.0	600.0	600.0	600.0	1.2	1.2	88.84	0.4	18.1	18.1	15.6	2.47	7.307 CC, ES		
700.0	700.0	700.0	700.0	1.4	1.5	175.49	0.4	18.1	19.8	16.9	2.91	6.805		
800.0	799.8	799.8	799.8	1.7	1.7	176.43	0.4	18.1	25.0	21.7	3.34	7.490		
900.0	899.5	900.6	900.6	1.9	1.9	177.15	0.5	16.3	32.0	28.2	3.76	8.506		
1,000.0	998.7	1,001.6	1,001.4	2.2	2.1	177.54	0.9	11.0	38.9	34.8	4.17	9.334		
1,100.0	1,097.5	1,102.9	1,102.3	2.4	2.3	177.73	1.7	2.1	45.8	41.2	4.59	9.990		
1,200.0	1,195.6	1,204.4	1,203.0	2.8	2.6	177.81	2.7	-10.3	52.7	47.7	5.01	10.509		
1,300.0	1,293.1	1,306.1	1,303.5	3.2	2.9	177.82	4.0	-26.4	59.5	54.0	5.45	10.916		
1,400.0	1,389.6	1,408.1	1,403.6	3.7	3.2	177.77	5.6	-46.0	66.2	60.3	5.90	11.227		
1,500.0	1,485.3	1,510.4	1,503.1	4.2	3.6	177.69	7.5	-69.3	72.9	66.5	6.36	11.455		
1,600.0	1,579.8	1,612.9	1,602.0	4.8	4.1	177.57	9.7	-96.1	79.4	72.6	6.85	11.601		
1,700.0	1,673.9	1,713.8	1,698.6	5.5	4.6	177.41	12.1	-125.2	84.6	77.2	7.40	11.431		
1,800.0	1,768.0	1,813.6	1,794.1	6.1	5.2	177.26	14.5	-154.3	89.5	81.6	7.96	11.255		
1,900.0	1,862.1	1,913.5	1,889.6	6.8	5.7	177.12	16.9	-183.4	94.5	85.9	8.53	11.078		
2,000.0	1,956.2	2,013.4	1,985.1	7.5	6.3	177.00	19.3	-212.4	99.4	90.3	9.11	10.914		
2,100.0	2,050.3	2,113.3	2,080.7	8.2	6.9	176.89	21.6	-241.5	104.4	94.7	9.70	10.761		
2,200.0	2,144.4	2,213.2	2,176.2	8.9	7.5	176.79	24.0	-270.6	109.3	99.0	10.29	10.620		
2,300.0	2,238.5	2,313.0	2,271.7	9.6	8.0	176.70	26.4	-299.6	114.2	103.3	10.89	10.489		
2,400.0	2,332.6	2,412.9	2,367.3	10.3	8.6	176.62	28.8	-328.7	119.2	107.7	11.49	10.368		
2,500.0	2,426.6	2,512.8	2,462.8	11.0	9.2	176.54	31.2	-357.7	124.1	112.0	12.10	10.256		
2,600.0	2,520.7	2,612.7	2,558.3	11.8	9.9	176.47	33.6	-386.8	129.1	116.3	12.71	10.152		
2,700.0	2,614.8	2,712.5	2,653.8	12.5	10.5	176.40	35.9	-415.9	134.0	120.7	13.33	10.055		
2,800.0	2,708.9	2,812.4	2,749.4	13.2	11.1	176.34	38.3	-444.9	138.9	125.0	13.94	9.966		
2,900.0	2,803.0	2,912.3	2,844.9	13.9	11.7	176.28	40.7	-474.0	143.9	129.3	14.56	9.882		
3,000.0	2,897.1	3,012.2	2,940.4	14.6	12.3	176.23	43.1	-503.0	148.8	133.6	15.18	9.804		
3,100.0	2,991.2	3,112.1	3,035.9	15.3	12.9	176.18	45.5	-532.1	153.8	138.0	15.80	9.731		
3,200.0	3,085.3	3,211.9	3,131.5	16.1	13.5	176.13	47.9	-561.2	158.7	142.3	16.42	9.663		
3,300.0	3,179.4	3,311.8	3,227.0	16.8	14.1	176.09	50.2	-590.2	163.6	146.6	17.05	9.599		
3,400.0	3,273.5	3,411.7	3,322.5	17.5	14.8	176.05	52.6	-619.3	168.6	150.9	17.67	9.539		
3,500.0	3,367.6	3,511.6	3,418.0	18.2	15.4	176.01	55.0	-648.4	173.5	155.2	18.30	9.482		
3,600.0	3,461.7	3,611.4	3,513.6	19.0	16.0	175.97	57.4	-677.4	178.5	159.5	18.93	9.429		
3,700.0	3,555.8	3,711.3	3,609.1	19.7	16.6	175.94	59.8	-706.5	183.4	163.9	19.56	9.379		
3,800.0	3,649.8	3,811.2	3,704.6	20.4	17.2	175.90	62.1	-735.5	188.3	168.2	20.18	9.331		
3,900.0	3,743.9	3,911.1	3,800.2	21.1	17.9	175.87	64.5	-764.6	193.3	172.5	20.81	9.286		
4,000.0	3,838.0	4,011.0	3,895.7	21.9	18.5	175.84	66.9	-793.7	198.2	176.8	21.45	9.243		
4,100.0	3,932.1	4,110.8	3,991.2	22.6	19.1	175.81	69.3	-822.7	203.2	181.1	22.08	9.203		
4,200.0	4,026.2	4,210.7	4,086.7	23.3	19.7	175.79	71.7	-851.8	208.1	185.4	22.71	9.165		
4,300.0	4,120.3	4,310.6	4,182.3	24.0	20.4	175.76	74.1	-880.8	213.1	189.7	23.34	9.128		
4,400.0	4,214.4	4,410.5	4,277.8	24.8	21.0	175.73	76.4	-909.9	218.0	194.0	23.97	9.093		
4,500.0	4,308.5	4,510.3	4,373.3	25.5	21.6	175.71	78.8	-939.0	222.9	198.3	24.61	9.060		
4,600.0	4,402.6	4,610.2	4,468.8	26.2	22.2	175.69	81.2	-968.0	227.9	202.6	25.24	9.028		
4,700.0	4,496.7	4,710.1	4,564.4	26.9	22.9	175.67	83.6	-997.1	232.8	207.0	25.88	8.998		
4,800.0	4,590.8	4,810.0	4,659.9	27.7	23.5	175.65	86.0	-1,026.2	237.8	211.3	26.51	8.969		
4,900.0	4,684.9	4,909.9	4,755.4	28.4	24.1	175.63	88.4	-1,055.2	242.7	215.6	27.14	8.941		
5,000.0	4,778.9	5,009.7	4,850.9	29.1	24.7	175.61	90.7	-1,084.3	247.7	219.9	27.78	8.915		
5,100.0	4,873.0	5,109.6	4,946.5	29.8	25.3	175.59	93.1	-1,113.3	252.6	224.2	28.41	8.890		

CC - Min centre to center distance or convergent point, SF - min separation factor, ES - min ellipse separation

Company:	Bayswater Exploration & Production, LLC	Local Co-ordinate Reference:	Well Mojack C-28HN
Project:	SEC.28-T7N-R64W	TVD Reference:	WELL @ 4906.5ft (RKB - 22.5')
Reference Site:	Mojack 28-C Pad (West) Sec.28-T7N-R64W	MD Reference:	WELL @ 4906.5ft (RKB - 22.5')
Site Error:	0.0ft	North Reference:	True
Reference Well:	Mojack C-28HN	Survey Calculation Method:	Minimum Curvature
Well Error:	0.0ft	Output errors are at	2.00 sigma
Reference Wellbore	Wellbore #1	Database:	Landmark
Reference Design:	Plan #1 (4-08-14)	Offset TVD Reference:	Offset Datum

Offset Design Mojack 28-C Pad (West) Sec.28-T7N-R64W - Mojack D-28HC - Wellbore #1 - Plan #1 (4-08-14)												Offset Site Error:	0.0 ft
Survey Program: 0-MWMD												Offset Well Error:	0.0 ft
Reference		Offset		Semi Major Axis			Distance						
Measured Depth (ft)	Vertical Depth (ft)	Measured Depth (ft)	Vertical Depth (ft)	Reference (ft)	Offset (ft)	Highside Toolface (°)	Offset Wellbore Centre +N/-S (ft)	+E/-W (ft)	Between Centres (ft)	Between Ellipses (ft)	Minimum Separation (ft)	Separation Factor	Warning
5,200.0	4,967.1	5,209.5	5,042.0	30.6	26.0	175.57	95.5	-1,142.4	257.5	228.5	29.05	8.865	
5,300.0	5,061.2	5,309.4	5,137.5	31.3	26.6	175.55	97.9	-1,171.5	262.5	232.8	29.69	8.842	
5,400.0	5,155.3	5,409.2	5,233.1	32.0	27.2	175.54	100.3	-1,200.5	267.4	237.1	30.32	8.819	
5,500.0	5,249.4	5,509.1	5,328.6	32.8	27.8	175.52	102.7	-1,229.6	272.4	241.4	30.96	8.798	
5,600.0	5,343.5	5,609.0	5,424.1	33.5	28.5	175.51	105.0	-1,258.6	277.3	245.7	31.60	8.777	
5,700.0	5,437.6	5,708.9	5,519.6	34.2	29.1	175.49	107.4	-1,287.7	282.2	250.0	32.23	8.757	
5,800.0	5,531.7	5,808.8	5,615.2	34.9	29.7	175.48	109.8	-1,316.8	287.2	254.3	32.87	8.737	
5,900.0	5,625.8	5,908.6	5,710.7	35.7	30.3	175.47	112.2	-1,345.8	292.1	258.6	33.51	8.719	
6,000.0	5,719.9	6,008.5	5,806.2	36.4	31.0	175.45	114.6	-1,374.9	297.1	262.9	34.14	8.701	
6,100.0	5,814.0	6,108.4	5,901.7	37.1	31.6	175.44	116.9	-1,404.0	302.0	267.2	34.78	8.683	
6,200.0	5,908.0	6,208.3	5,997.3	37.9	32.2	175.43	119.3	-1,433.0	307.0	271.5	35.42	8.666	
6,300.0	6,002.1	6,308.1	6,092.8	38.6	32.8	175.42	121.7	-1,462.1	311.9	275.8	36.06	8.650	
6,400.0	6,096.2	6,408.0	6,188.3	39.3	33.5	175.40	124.1	-1,491.1	316.8	280.1	36.70	8.635	
6,500.0	6,190.3	6,507.9	6,283.8	40.0	34.1	175.39	126.5	-1,520.2	321.8	284.5	37.33	8.619	
6,600.0	6,284.4	6,607.8	6,379.4	40.8	34.7	175.38	128.9	-1,549.3	326.7	288.8	37.97	8.605	
6,700.0	6,378.5	6,707.7	6,474.9	41.5	35.4	175.37	131.2	-1,578.3	331.7	293.1	38.61	8.590	
6,800.0	6,472.6	6,807.5	6,570.4	42.2	36.0	175.36	133.6	-1,607.4	336.6	297.4	39.25	8.577	
6,900.0	6,566.6	6,907.6	6,666.2	42.9	36.6	-160.85	134.7	-1,636.5	341.6	301.7	39.90	8.560	
7,000.0	6,658.2	7,009.5	6,762.5	43.4	37.1	-140.04	119.9	-1,665.6	346.4	305.9	40.50	8.554	
7,100.0	6,744.2	7,113.1	6,855.8	43.9	37.6	-128.31	85.1	-1,693.6	351.0	310.1	40.96	8.569	
7,200.0	6,821.3	7,218.4	6,942.1	44.4	38.0	-121.81	30.8	-1,719.3	355.1	313.7	41.33	8.591	
7,300.0	6,886.8	7,325.3	7,017.2	44.8	38.4	-118.09	-41.7	-1,741.3	358.4	316.7	41.73	8.589	
7,400.0	6,938.3	7,433.4	7,077.2	45.1	38.7	-115.94	-129.6	-1,758.6	360.8	318.5	42.29	8.530	
7,500.0	6,973.8	7,542.4	7,118.9	45.3	39.0	-114.73	-229.5	-1,770.2	362.1	318.9	43.19	8.384	
7,600.0	6,993.8	7,648.0	7,141.0	45.5	39.3	-114.37	-332.5	-1,775.8	362.4	317.9	44.41	8.159	
7,700.0	7,009.1	7,757.8	7,157.7	45.8	39.6	-114.36	-440.9	-1,780.5	362.4	316.1	46.26	7.832	
7,800.0	7,016.0	7,872.7	7,164.4	46.1	40.1	-114.20	-555.5	-1,785.4	361.9	313.0	48.93	7.396	
7,842.0	7,016.9	7,916.0	7,164.4	46.3	40.2	-114.09	-598.7	-1,787.3	361.6	311.6	49.93	7.241	
7,900.0	7,016.0	7,974.0	7,164.4	46.5	40.5	-114.21	-656.7	-1,789.8	361.9	310.6	51.33	7.051	
8,000.0	7,015.4	8,074.0	7,164.4	47.0	41.1	-114.30	-756.6	-1,794.0	362.2	308.7	53.51	6.769	
8,100.0	7,014.7	8,174.0	7,164.4	47.5	41.7	-114.39	-856.5	-1,798.3	362.4	306.6	55.82	6.493	
8,200.0	7,014.1	8,274.0	7,164.4	48.1	42.4	-114.49	-956.4	-1,802.6	362.7	304.5	58.25	6.227	
8,300.0	7,013.4	8,374.0	7,164.4	48.7	43.2	-114.58	-1,056.3	-1,806.9	363.0	302.2	60.79	5.971	
8,400.0	7,012.8	8,474.0	7,164.4	49.4	44.1	-114.67	-1,156.2	-1,811.2	363.2	299.8	63.41	5.728	
8,500.0	7,012.1	8,574.0	7,164.4	50.2	45.0	-114.76	-1,256.1	-1,815.5	363.5	297.4	66.12	5.498	
8,600.0	7,011.5	8,674.0	7,164.3	51.0	46.0	-114.85	-1,356.0	-1,819.8	363.8	294.9	68.90	5.280	
8,700.0	7,010.8	8,774.0	7,164.3	51.9	47.0	-114.94	-1,455.9	-1,824.1	364.0	292.3	71.73	5.075	
8,800.0	7,010.2	8,874.0	7,164.3	52.9	48.1	-115.03	-1,555.8	-1,828.3	364.3	289.7	74.63	4.882	
8,900.0	7,009.5	8,974.0	7,164.3	53.9	49.3	-115.12	-1,655.7	-1,832.6	364.6	287.0	77.56	4.700	
9,000.0	7,008.9	9,074.0	7,164.3	54.9	50.5	-115.22	-1,755.6	-1,836.9	364.8	284.3	80.54	4.530	
9,100.0	7,008.2	9,174.0	7,164.3	56.0	51.8	-115.31	-1,855.5	-1,841.2	365.1	281.6	83.56	4.370	
9,200.0	7,007.6	9,274.0	7,164.3	57.2	53.1	-115.40	-1,955.4	-1,845.5	365.4	278.8	86.60	4.219	
9,300.0	7,006.9	9,374.0	7,164.3	58.4	54.4	-115.49	-2,055.4	-1,849.8	365.7	276.0	89.68	4.078	
9,400.0	7,006.3	9,474.0	7,164.3	59.7	55.8	-115.58	-2,155.3	-1,854.1	365.9	273.2	92.77	3.944	
9,500.0	7,005.6	9,574.0	7,164.3	60.9	57.2	-115.67	-2,255.2	-1,858.3	366.2	270.3	95.90	3.819	
9,600.0	7,005.0	9,674.0	7,164.2	62.3	58.7	-115.76	-2,355.1	-1,862.6	366.5	267.5	99.04	3.701	
9,700.0	7,004.3	9,774.0	7,164.2	63.6	60.2	-115.85	-2,455.0	-1,866.9	366.8	264.6	102.19	3.589	
9,800.0	7,003.7	9,874.0	7,164.2	65.0	61.7	-115.94	-2,554.9	-1,871.2	367.0	261.7	105.36	3.484	
9,900.0	7,003.0	9,974.0	7,164.2	66.4	63.2	-116.03	-2,654.8	-1,875.5	367.3	258.8	108.55	3.384	
10,000.0	7,002.4	10,074.0	7,164.2	67.9	64.8	-116.11	-2,754.7	-1,879.8	367.6	255.9	111.75	3.290	
10,100.0	7,001.7	10,174.0	7,164.2	69.4	66.3	-116.20	-2,854.6	-1,884.1	367.9	252.9	114.95	3.200	
10,200.0	7,001.1	10,274.0	7,164.2	70.9	67.9	-116.29	-2,954.5	-1,888.3	368.2	250.0	118.17	3.116	

CC - Min centre to center distance or convergent point, SF - min separation factor, ES - min ellipse separation

Company:	Bayswater Exploration & Production, LLC	Local Co-ordinate Reference:	Well Mojack C-28HN
Project:	SEC.28-T7N-R64W	TVD Reference:	WELL @ 4906.5ft (RKB - 22.5')
Reference Site:	Mojack 28-C Pad (West) Sec.28-T7N-R64W	MD Reference:	WELL @ 4906.5ft (RKB - 22.5')
Site Error:	0.0ft	North Reference:	True
Reference Well:	Mojack C-28HN	Survey Calculation Method:	Minimum Curvature
Well Error:	0.0ft	Output errors are at	2.00 sigma
Reference Wellbore	Wellbore #1	Database:	Landmark
Reference Design:	Plan #1 (4-08-14)	Offset TVD Reference:	Offset Datum

Offset Design Mojack 28-C Pad (West) Sec.28-T7N-R64W - Mojack D-28HC - Wellbore #1 - Plan #1 (4-08-14)												Offset Site Error:	0.0 ft
Survey Program: 0-MWD												Offset Well Error:	0.0 ft
Reference		Offset		Semi Major Axis			Distance						Warning
Measured Depth (ft)	Vertical Depth (ft)	Measured Depth (ft)	Vertical Depth (ft)	Reference (ft)	Offset (ft)	Highside Toolface (°)	Offset Wellbore Centre +N/-S (ft)	+E/-W (ft)	Between Centres (ft)	Between Ellipses (ft)	Minimum Separation (ft)	Separation Factor	
10,300.0	7,000.4	10,374.0	7,164.2	72.4	69.6	-116.38	-3,054.4	-1,892.6	368.4	247.1	121.40	3.035	
10,400.0	6,999.8	10,474.0	7,164.2	73.9	71.2	-116.47	-3,154.3	-1,896.9	368.7	244.1	124.63	2.959	
10,500.0	6,999.1	10,574.0	7,164.1	75.5	72.8	-116.56	-3,254.2	-1,901.2	369.0	241.2	127.86	2.886	
10,600.0	6,998.5	10,674.0	7,164.1	77.1	74.5	-116.65	-3,354.1	-1,905.5	369.3	238.2	131.11	2.817	
10,700.0	6,997.9	10,774.0	7,164.1	78.7	76.2	-116.74	-3,454.0	-1,909.8	369.6	235.2	134.36	2.751	
10,800.0	6,997.2	10,874.0	7,164.1	80.3	77.8	-116.82	-3,553.9	-1,914.1	369.9	232.3	137.61	2.688	
10,900.0	6,996.6	10,974.0	7,164.1	81.9	79.5	-116.91	-3,653.9	-1,918.3	370.2	229.3	140.86	2.628	
11,000.0	6,995.9	11,073.9	7,164.1	83.5	81.2	-117.00	-3,753.8	-1,922.6	370.5	226.3	144.12	2.570	
11,100.0	6,995.3	11,173.9	7,164.1	85.2	83.0	-117.09	-3,853.7	-1,926.9	370.7	223.4	147.38	2.516	
11,200.0	6,994.6	11,273.9	7,164.1	86.9	84.7	-117.18	-3,953.6	-1,931.2	371.0	220.4	150.64	2.463	
11,300.0	6,994.0	11,373.9	7,164.1	88.5	86.4	-117.26	-4,053.5	-1,935.5	371.3	217.4	153.90	2.413	
11,400.0	6,993.3	11,473.9	7,164.1	90.2	88.2	-117.35	-4,153.4	-1,939.8	371.6	214.5	157.16	2.364	
11,500.0	6,992.7	11,573.9	7,164.0	91.9	89.9	-117.44	-4,253.3	-1,944.1	371.9	211.5	160.43	2.318	
11,600.0	6,992.0	11,673.9	7,164.0	93.6	91.7	-117.53	-4,353.2	-1,948.3	372.2	208.5	163.69	2.274	
11,700.0	6,991.4	11,773.9	7,164.0	95.4	93.4	-117.61	-4,453.1	-1,952.6	372.5	205.5	166.96	2.231	
11,800.0	6,990.7	11,873.9	7,164.0	97.1	95.2	-117.70	-4,553.0	-1,956.9	372.8	202.6	170.22	2.190	
11,850.3	6,990.4	11,924.3	7,164.0	97.9	96.1	-117.74	-4,603.3	-1,959.1	372.9	201.1	171.86	2.170	
11,900.0	6,990.1	11,961.6	7,164.0	98.8	96.7	-117.78	-4,640.6	-1,960.7	373.3	200.0	173.29	2.154 SF	
11,911.0	6,990.0	11,961.6	7,164.0	99.0	96.7	-117.78	-4,640.6	-1,960.7	373.8	200.4	173.47	2.155	

Company:	Bayswater Exploration & Production, LLC	Local Co-ordinate Reference:	Well Mojack C-28HN
Project:	SEC.28-T7N-R64W	TVD Reference:	WELL @ 4906.5ft (RKB - 22.5')
Reference Site:	Mojack 28-C Pad (West) Sec.28-T7N-R64W	MD Reference:	WELL @ 4906.5ft (RKB - 22.5')
Site Error:	0.0ft	North Reference:	True
Reference Well:	Mojack C-28HN	Survey Calculation Method:	Minimum Curvature
Well Error:	0.0ft	Output errors are at	2.00 sigma
Reference Wellbore	Wellbore #1	Database:	Landmark
Reference Design:	Plan #1 (4-08-14)	Offset TVD Reference:	Offset Datum

Offset Design Mojack 28-C Pad (West) Sec.28-T7N-R64W - Mojack E-28HN - Wellbore #1 - Plan #1 (4-08-14)													Offset Site Error:	0.0 ft
Survey Program: 0-MWMD													Offset Well Error:	0.0 ft
Reference		Offset		Semi Major Axis			Distance							Warning
Measured Depth (ft)	Vertical Depth (ft)	Measured Depth (ft)	Vertical Depth (ft)	Reference (ft)	Offset (ft)	Highside Toolface (°)	Offset Wellbore Centre +N/-S (ft)	+E/-W (ft)	Between Centres (ft)	Between Ellipses (ft)	Minimum Separation (ft)	Separation Factor		
0.0	0.0	1.0	1.0	0.0	0.0	88.84	0.7	36.1	36.1	36.1	0.00	N/A		
100.0	100.0	101.0	101.0	0.1	0.1	88.84	0.7	36.1	36.1	35.9	0.23	159.173		
200.0	200.0	201.0	201.0	0.3	0.3	88.84	0.7	36.1	36.1	35.5	0.68	53.410		
300.0	300.0	301.0	301.0	0.6	0.6	88.84	0.7	36.1	36.1	35.0	1.13	32.089		
400.0	400.0	401.0	401.0	0.8	0.8	88.84	0.7	36.1	36.1	34.6	1.58	22.934		
500.0	500.0	501.0	501.0	1.0	1.0	88.84	0.7	36.1	36.1	34.1	2.03	17.843		
600.0	600.0	601.0	601.0	1.2	1.2	88.84	0.7	36.1	36.1	33.7	2.47	14.602 CC, ES		
700.0	700.0	701.0	701.0	1.4	1.5	175.28	0.7	36.1	37.9	35.0	2.91	13.001		
800.0	799.8	800.8	800.8	1.7	1.7	175.85	0.7	36.1	43.1	39.7	3.34	12.887		
900.0	899.5	900.5	900.5	1.9	1.9	176.54	0.7	36.1	51.8	48.0	3.78	13.712		
1,000.0	998.7	999.7	999.7	2.2	2.1	177.18	0.7	36.1	64.0	59.7	4.21	15.188		
1,100.0	1,097.5	1,101.2	1,101.2	2.4	2.4	177.63	0.9	34.3	77.8	73.2	4.63	16.802		
1,200.0	1,195.6	1,203.3	1,203.1	2.8	2.6	177.84	1.5	29.0	91.7	86.6	5.04	18.177		
1,300.0	1,293.1	1,305.8	1,305.3	3.2	2.8	177.91	2.5	19.9	105.5	100.0	5.46	19.301		
1,400.0	1,389.6	1,408.9	1,407.5	3.7	3.0	177.89	3.9	7.2	119.2	113.3	5.89	20.215		
1,500.0	1,485.3	1,512.5	1,509.8	4.2	3.3	177.80	5.7	-9.3	132.7	126.4	6.34	20.947		
1,600.0	1,579.8	1,616.7	1,611.9	4.8	3.7	177.66	7.9	-29.6	146.2	139.4	6.80	21.500		
1,700.0	1,673.9	1,721.6	1,714.0	5.5	4.1	177.46	10.5	-53.7	157.4	150.1	7.32	21.492		
1,800.0	1,768.0	1,821.9	1,811.0	6.1	4.5	177.23	13.2	-79.0	166.4	158.5	7.86	21.162		
1,900.0	1,862.1	1,921.5	1,907.4	6.8	4.9	177.02	16.0	-104.1	175.3	166.9	8.41	20.860		
2,000.0	1,956.2	2,021.1	2,003.7	7.5	5.4	176.83	18.7	-129.2	184.3	175.3	8.96	20.560		
2,100.0	2,050.3	2,120.7	2,100.0	8.2	5.9	176.66	21.4	-154.3	193.3	183.7	9.53	20.280		
2,200.0	2,144.4	2,220.3	2,196.4	8.9	6.4	176.51	24.2	-179.4	202.2	192.1	10.10	20.018		
2,300.0	2,238.5	2,319.9	2,292.7	9.6	6.9	176.36	26.9	-204.5	211.2	200.5	10.68	19.775		
2,400.0	2,332.6	2,419.5	2,389.1	10.3	7.4	176.23	29.6	-229.6	220.2	208.9	11.26	19.548		
2,500.0	2,426.6	2,519.1	2,485.4	11.0	7.9	176.11	32.4	-254.7	229.2	217.3	11.85	19.336		
2,600.0	2,520.7	2,618.7	2,581.7	11.8	8.4	176.00	35.1	-279.8	238.1	225.7	12.44	19.139		
2,700.0	2,614.8	2,718.3	2,678.1	12.5	8.9	175.90	37.8	-304.9	247.1	234.1	13.04	18.956		
2,800.0	2,708.9	2,817.9	2,774.4	13.2	9.5	175.80	40.6	-330.0	256.1	242.5	13.63	18.784		
2,900.0	2,803.0	2,917.4	2,870.8	13.9	10.0	175.71	43.3	-355.1	265.1	250.8	14.23	18.624		
3,000.0	2,897.1	3,017.0	2,967.1	14.6	10.5	175.63	46.0	-380.2	274.0	259.2	14.83	18.473		
3,100.0	2,991.2	3,116.6	3,063.5	15.3	11.1	175.55	48.7	-405.3	283.0	267.6	15.44	18.333		
3,200.0	3,085.3	3,216.2	3,159.8	16.1	11.6	175.48	51.5	-430.4	292.0	276.0	16.04	18.201		
3,300.0	3,179.4	3,315.8	3,256.1	16.8	12.1	175.41	54.2	-455.5	301.0	284.3	16.65	18.076		
3,400.0	3,273.5	3,415.4	3,352.5	17.5	12.7	175.34	56.9	-480.6	310.0	292.7	17.26	17.959		
3,500.0	3,367.6	3,515.0	3,448.8	18.2	13.2	175.28	59.7	-505.8	318.9	301.1	17.87	17.849		
3,600.0	3,461.7	3,614.6	3,545.2	19.0	13.7	175.22	62.4	-530.9	327.9	309.4	18.48	17.745		
3,700.0	3,555.8	3,714.2	3,641.5	19.7	14.3	175.17	65.1	-556.0	336.9	317.8	19.09	17.647		
3,800.0	3,649.8	3,813.8	3,737.8	20.4	14.8	175.11	67.9	-581.1	345.9	326.2	19.70	17.554		
3,900.0	3,743.9	3,913.4	3,834.2	21.1	15.3	175.06	70.6	-606.2	354.9	334.5	20.32	17.465		
4,000.0	3,838.0	4,013.0	3,930.5	21.9	15.9	175.02	73.3	-631.3	363.8	342.9	20.93	17.382		
4,100.0	3,932.1	4,112.6	4,026.9	22.6	16.4	174.97	76.0	-656.4	372.8	351.3	21.55	17.302		
4,200.0	4,026.2	4,212.2	4,123.2	23.3	17.0	174.93	78.8	-681.5	381.8	359.6	22.16	17.226		
4,300.0	4,120.3	4,311.8	4,219.5	24.0	17.5	174.89	81.5	-706.6	390.8	368.0	22.78	17.154		
4,400.0	4,214.4	4,411.4	4,315.9	24.8	18.0	174.85	84.2	-731.7	399.8	376.4	23.40	17.085		
4,500.0	4,308.5	4,511.0	4,412.2	25.5	18.6	174.81	87.0	-756.8	408.7	384.7	24.02	17.020		
4,600.0	4,402.6	4,610.6	4,508.6	26.2	19.1	174.78	89.7	-781.9	417.7	393.1	24.63	16.957		
4,700.0	4,496.7	4,710.2	4,604.9	26.9	19.7	174.74	92.4	-807.0	426.7	401.5	25.25	16.897		
4,800.0	4,590.8	4,809.8	4,701.3	27.7	20.2	174.71	95.2	-832.1	435.7	409.8	25.87	16.840		
4,900.0	4,684.9	4,909.4	4,797.6	28.4	20.8	174.68	97.9	-857.2	444.7	418.2	26.49	16.785		
5,000.0	4,778.9	5,008.9	4,893.9	29.1	21.3	174.65	100.6	-882.3	453.7	426.5	27.11	16.732		
5,100.0	4,873.0	5,108.5	4,990.3	29.8	21.8	174.62	103.3	-907.4	462.6	434.9	27.73	16.682		

CC - Min centre to center distance or convergent point, SF - min separation factor, ES - min ellipse separation

Company:	Bayswater Exploration & Production, LLC	Local Co-ordinate Reference:	Well Mojack C-28HN
Project:	SEC.28-T7N-R64W	TVD Reference:	WELL @ 4906.5ft (RKB - 22.5')
Reference Site:	Mojack 28-C Pad (West) Sec.28-T7N-R64W	MD Reference:	WELL @ 4906.5ft (RKB - 22.5')
Site Error:	0.0ft	North Reference:	True
Reference Well:	Mojack C-28HN	Survey Calculation Method:	Minimum Curvature
Well Error:	0.0ft	Output errors are at	2.00 sigma
Reference Wellbore	Wellbore #1	Database:	Landmark
Reference Design:	Plan #1 (4-08-14)	Offset TVD Reference:	Offset Datum

Offset Design Mojack 28-C Pad (West) Sec.28-T7N-R64W - Mojack E-28HN - Wellbore #1 - Plan #1 (4-08-14)													Offset Site Error:	0.0 ft
Survey Program: 0-MWWD													Offset Well Error:	0.0 ft
Reference		Offset		Semi Major Axis			Distance							Warning
Measured Depth (ft)	Vertical Depth (ft)	Measured Depth (ft)	Vertical Depth (ft)	Reference (ft)	Offset (ft)	Highside Toolface (°)	Offset Wellbore Centre +N/-S (ft)	+E/-W (ft)	Between Centres (ft)	Between Ellipses (ft)	Minimum Separation (ft)	Separation Factor		
5,200.0	4,967.1	5,208.1	5,086.6	30.6	22.4	174.59	106.1	-932.5	471.6	443.3	28.35	16.633		
5,300.0	5,061.2	5,307.7	5,183.0	31.3	22.9	174.57	108.8	-957.6	480.6	451.6	28.98	16.587		
5,400.0	5,155.3	5,407.3	5,279.3	32.0	23.5	174.54	111.5	-982.7	489.6	460.0	29.60	16.542		
5,500.0	5,249.4	5,506.9	5,375.6	32.8	24.0	174.51	114.3	-1,007.8	498.6	468.4	30.22	16.499		
5,600.0	5,343.5	5,606.5	5,472.0	33.5	24.6	174.49	117.0	-1,032.9	507.6	476.7	30.84	16.457		
5,700.0	5,437.6	5,706.1	5,568.3	34.2	25.1	174.47	119.7	-1,058.0	516.5	485.1	31.46	16.417		
5,800.0	5,531.7	5,805.7	5,664.7	34.9	25.7	174.44	122.5	-1,083.1	525.5	493.4	32.09	16.379		
5,900.0	5,625.8	5,905.3	5,761.0	35.7	26.2	174.42	125.2	-1,108.2	534.5	501.8	32.71	16.342		
6,000.0	5,719.9	6,004.9	5,857.3	36.4	26.7	174.40	127.9	-1,133.3	543.5	510.2	33.33	16.306		
6,100.0	5,814.0	6,104.5	5,953.7	37.1	27.3	174.38	130.6	-1,158.4	552.5	518.5	33.96	16.271		
6,200.0	5,908.0	6,204.1	6,050.0	37.9	27.8	174.36	133.4	-1,183.5	561.5	526.9	34.58	16.237		
6,300.0	6,002.1	6,303.7	6,146.4	38.6	28.4	174.34	136.1	-1,208.6	570.4	535.2	35.20	16.205		
6,400.0	6,096.2	6,403.3	6,242.7	39.3	28.9	174.32	138.8	-1,233.7	579.4	543.6	35.83	16.173		
6,500.0	6,190.3	6,502.9	6,339.1	40.0	29.5	174.31	141.6	-1,258.9	588.4	552.0	36.45	16.143		
6,600.0	6,284.4	6,602.5	6,435.4	40.8	30.0	174.29	144.3	-1,284.0	597.4	560.3	37.07	16.113		
6,700.0	6,378.5	6,702.1	6,531.7	41.5	30.6	174.27	147.0	-1,309.1	606.4	568.7	37.70	16.085		
6,800.0	6,472.6	6,804.3	6,630.4	42.2	31.0	174.99	142.0	-1,334.7	615.2	577.0	38.17	16.116		
6,900.0	6,566.6	6,902.4	6,722.5	42.9	31.5	-158.19	118.6	-1,358.7	623.9	585.5	38.42	16.238		
7,000.0	6,658.2	6,997.1	6,805.8	43.4	31.8	-133.87	79.5	-1,380.2	632.8	593.8	38.95	16.247		
7,100.0	6,744.2	7,088.9	6,878.8	43.9	32.1	-118.92	27.4	-1,399.1	641.3	601.5	39.72	16.144		
7,200.0	6,821.3	7,178.3	6,940.4	44.4	32.4	-109.61	-35.3	-1,414.9	648.9	608.4	40.54	16.006		
7,300.0	6,886.8	7,265.7	6,989.7	44.8	32.6	-103.55	-106.3	-1,427.5	655.4	614.1	41.27	15.882		
7,400.0	6,938.3	7,350.0	7,025.7	45.1	32.9	-99.58	-181.8	-1,436.7	660.3	618.5	41.79	15.800		
7,500.0	6,973.8	7,436.4	7,050.0	45.3	33.1	-97.09	-264.4	-1,442.7	663.3	621.1	42.20	15.718		
7,600.0	6,993.8	7,533.7	7,067.1	45.5	33.4	-96.34	-360.1	-1,446.9	664.0	620.9	43.09	15.411		
7,700.0	7,009.1	7,640.4	7,080.1	45.8	33.8	-96.07	-465.9	-1,451.4	663.7	618.8	44.89	14.785		
7,800.0	7,016.0	7,746.4	7,083.3	46.1	34.3	-95.73	-571.8	-1,456.0	663.3	616.2	47.02	14.107		
7,900.0	7,016.0	7,846.4	7,081.9	46.5	34.9	-95.62	-671.7	-1,460.2	663.1	613.9	49.24	13.468		
8,000.0	7,015.4	7,946.4	7,080.5	47.0	35.6	-95.55	-771.6	-1,464.5	663.1	611.5	51.55	12.863		
8,100.0	7,014.7	8,046.4	7,079.1	47.5	36.4	-95.49	-871.4	-1,468.8	663.0	609.0	54.03	12.270		
8,200.0	7,014.1	8,146.4	7,077.7	48.1	37.3	-95.43	-971.3	-1,473.1	662.9	606.3	56.66	11.700		
8,300.0	7,013.4	8,246.4	7,076.4	48.7	38.2	-95.36	-1,071.2	-1,477.4	662.9	603.5	59.42	11.156		
8,400.0	7,012.8	8,346.4	7,075.0	49.4	39.2	-95.30	-1,171.1	-1,481.6	662.8	600.5	62.28	10.642		
8,500.0	7,012.1	8,446.4	7,073.6	50.2	40.3	-95.24	-1,271.0	-1,485.9	662.7	597.5	65.24	10.158		
8,600.0	7,011.5	8,546.4	7,072.2	51.0	41.5	-95.17	-1,370.9	-1,490.2	662.7	594.4	68.29	9.704		
8,700.0	7,010.8	8,646.4	7,070.8	51.9	42.7	-95.11	-1,470.8	-1,494.5	662.6	591.2	71.41	9.280		
8,800.0	7,010.2	8,746.4	7,069.4	52.9	44.0	-95.05	-1,570.7	-1,498.8	662.6	588.0	74.59	8.883		
8,900.0	7,009.5	8,846.4	7,068.0	53.9	45.3	-94.98	-1,670.6	-1,503.0	662.5	584.7	77.82	8.513		
9,000.0	7,008.9	8,946.4	7,066.7	54.9	46.7	-94.92	-1,770.5	-1,507.3	662.4	581.3	81.11	8.167		
9,100.0	7,008.2	9,046.4	7,065.3	56.0	48.1	-94.85	-1,870.4	-1,511.6	662.4	577.9	84.44	7.844		
9,200.0	7,007.6	9,146.4	7,063.9	57.2	49.6	-94.79	-1,970.3	-1,515.9	662.3	574.5	87.81	7.543		
9,300.0	7,006.9	9,246.4	7,062.5	58.4	51.0	-94.73	-2,070.2	-1,520.2	662.3	571.1	91.22	7.260		
9,400.0	7,006.3	9,346.4	7,061.1	59.7	52.6	-94.66	-2,170.1	-1,524.4	662.2	567.6	94.65	6.996		
9,500.0	7,005.6	9,446.4	7,059.7	60.9	54.1	-94.60	-2,270.0	-1,528.7	662.2	564.0	98.11	6.749		
9,600.0	7,005.0	9,546.4	7,058.4	62.3	55.7	-94.54	-2,369.9	-1,533.0	662.1	560.5	101.60	6.517		
9,700.0	7,004.3	9,646.4	7,057.0	63.6	57.3	-94.47	-2,469.8	-1,537.3	662.1	556.9	105.11	6.298		
9,800.0	7,003.7	9,746.4	7,055.6	65.0	58.9	-94.41	-2,569.7	-1,541.6	662.0	553.4	108.64	6.093		
9,900.0	7,003.0	9,846.4	7,054.2	66.4	60.5	-94.35	-2,669.6	-1,545.8	661.9	549.8	112.19	5.900		
10,000.0	7,002.4	9,946.4	7,052.8	67.9	62.1	-94.28	-2,769.5	-1,550.1	661.9	546.1	115.76	5.718		
10,100.0	7,001.7	10,046.4	7,051.4	69.4	63.8	-94.22	-2,869.4	-1,554.4	661.8	542.5	119.34	5.546		
10,200.0	7,001.1	10,146.4	7,050.0	70.9	65.5	-94.16	-2,969.3	-1,558.7	661.8	538.9	122.94	5.383		
10,300.0	7,000.4	10,246.4	7,048.7	72.4	67.2	-94.09	-3,069.2	-1,563.0	661.8	535.2	126.54	5.229		

CC - Min centre to center distance or convergent point, SF - min separation factor, ES - min ellipse separation

Company:	Bayswater Exploration & Production, LLC	Local Co-ordinate Reference:	Well Mojack C-28HN
Project:	SEC.28-T7N-R64W	TVD Reference:	WELL @ 4906.5ft (RKB - 22.5')
Reference Site:	Mojack 28-C Pad (West) Sec.28-T7N-R64W	MD Reference:	WELL @ 4906.5ft (RKB - 22.5')
Site Error:	0.0ft	North Reference:	True
Reference Well:	Mojack C-28HN	Survey Calculation Method:	Minimum Curvature
Well Error:	0.0ft	Output errors are at	2.00 sigma
Reference Wellbore	Wellbore #1	Database:	Landmark
Reference Design:	Plan #1 (4-08-14)	Offset TVD Reference:	Offset Datum

Offset Design Mojack 28-C Pad (West) Sec.28-T7N-R64W - Mojack E-28HN - Wellbore #1 - Plan #1 (4-08-14)												Offset Site Error:	0.0 ft
Survey Program: 0-MWD												Offset Well Error:	0.0 ft
Reference		Offset		Semi Major Axis			Distance						Warning
Measured Depth (ft)	Vertical Depth (ft)	Measured Depth (ft)	Vertical Depth (ft)	Reference (ft)	Offset (ft)	Highside Toolface (°)	Offset Wellbore Centre +N/-S (ft)	+E/-W (ft)	Between Centres (ft)	Between Ellipses (ft)	Minimum Separation (ft)	Separation Factor	
10,400.0	6,999.8	10,346.4	7,047.3	73.9	68.9	-94.03	-3,169.1	-1,567.3	661.7	531.5	130.17	5.084	
10,500.0	6,999.1	10,446.4	7,045.9	75.5	70.6	-93.96	-3,269.0	-1,571.5	661.7	527.9	133.80	4.945	
10,600.0	6,998.5	10,546.4	7,044.5	77.1	72.3	-93.90	-3,368.8	-1,575.8	661.6	524.2	137.44	4.814	
10,700.0	6,997.9	10,646.4	7,043.1	78.7	74.1	-93.84	-3,468.7	-1,580.1	661.6	520.5	141.09	4.689	
10,800.0	6,997.2	10,746.4	7,041.7	80.3	75.8	-93.77	-3,568.6	-1,584.4	661.5	516.8	144.75	4.570	
10,900.0	6,996.6	10,846.4	7,040.4	81.9	77.5	-93.71	-3,668.5	-1,588.7	661.5	513.1	148.41	4.457	
11,000.0	6,995.9	10,946.3	7,039.0	83.5	79.3	-93.65	-3,768.4	-1,592.9	661.4	509.3	152.09	4.349	
11,100.0	6,995.3	11,046.3	7,037.6	85.2	81.1	-93.58	-3,868.3	-1,597.2	661.4	505.6	155.77	4.246	
11,200.0	6,994.6	11,146.3	7,036.2	86.9	82.8	-93.52	-3,968.2	-1,601.5	661.4	501.9	159.46	4.148	
11,300.0	6,994.0	11,246.3	7,034.8	88.5	84.6	-93.45	-4,068.1	-1,605.8	661.3	498.2	163.15	4.053	
11,400.0	6,993.3	11,346.3	7,033.4	90.2	86.4	-93.39	-4,168.0	-1,610.1	661.3	494.4	166.85	3.963	
11,500.0	6,992.7	11,446.3	7,032.0	91.9	88.2	-93.33	-4,267.9	-1,614.3	661.2	490.7	170.56	3.877	
11,600.0	6,992.0	11,546.3	7,030.7	93.6	90.0	-93.26	-4,367.8	-1,618.6	661.2	486.9	174.27	3.794	
11,700.0	6,991.4	11,646.3	7,029.3	95.4	91.8	-93.20	-4,467.7	-1,622.9	661.2	483.2	177.98	3.715	
11,800.0	6,990.7	11,746.3	7,027.9	97.1	93.6	-93.14	-4,567.6	-1,627.2	661.1	479.4	181.70	3.639	
11,853.6	6,990.4	11,799.9	7,027.1	98.0	94.6	-93.10	-4,621.2	-1,629.5	661.1	477.4	183.69	3.599	
11,900.0	6,990.1	11,810.3	7,027.0	98.8	94.8	-93.10	-4,631.5	-1,629.9	662.1	477.4	184.71	3.584	
11,911.0	6,990.0	11,810.3	7,027.0	99.0	94.8	-93.10	-4,631.5	-1,629.9	662.7	477.8	184.92	3.584 SF	

Company:	Bayswater Exploration & Production, LLC	Local Co-ordinate Reference:	Well Mojack C-28HN
Project:	SEC.28-T7N-R64W	TVD Reference:	WELL @ 4906.5ft (RKB - 22.5')
Reference Site:	Mojack 28-C Pad (West) Sec.28-T7N-R64W	MD Reference:	WELL @ 4906.5ft (RKB - 22.5')
Site Error:	0.0ft	North Reference:	True
Reference Well:	Mojack C-28HN	Survey Calculation Method:	Minimum Curvature
Well Error:	0.0ft	Output errors are at	2.00 sigma
Reference Wellbore	Wellbore #1	Database:	Landmark
Reference Design:	Plan #1 (4-08-14)	Offset TVD Reference:	Offset Datum

Offset Design Mojack 28-C Pad (West) Sec.28-T7N-R64W - Mojack F-28HN - Wellbore #1 - Plan #1 (4-08-14)												Offset Site Error:	0.0 ft
Survey Program: 0-MWDD												Offset Well Error:	0.0 ft
Reference		Offset		Semi Major Axis			Distance						
Measured Depth (ft)	Vertical Depth (ft)	Measured Depth (ft)	Vertical Depth (ft)	Reference (ft)	Offset (ft)	Highside Toolface (°)	Offset Wellbore Centre +N/-S (ft)	+E/-W (ft)	Between Centres (ft)	Between Ellipses (ft)	Minimum Separation (ft)	Separation Factor	Warning
0.0	0.0	2.0	2.0	0.0	0.0	88.45	1.5	53.9	53.9	53.9	0.00	N/A	
100.0	100.0	102.0	102.0	0.1	0.1	88.45	1.5	53.9	53.9	53.7	0.23	235.244	
200.0	200.0	202.0	202.0	0.3	0.3	88.45	1.5	53.9	53.9	53.3	0.68	79.453	
300.0	300.0	302.0	302.0	0.6	0.6	88.45	1.5	53.9	53.9	52.8	1.13	47.799	
400.0	400.0	402.0	402.0	0.8	0.8	88.45	1.5	53.9	53.9	52.4	1.58	34.181	
500.0	500.0	502.0	502.0	1.0	1.0	88.45	1.5	53.9	53.9	51.9	2.03	26.602	
600.0	600.0	602.0	602.0	1.2	1.2	88.45	1.5	53.9	53.9	51.5	2.48	21.774 CC, ES	
700.0	700.0	702.0	702.0	1.4	1.5	174.83	1.5	53.9	55.7	52.8	2.92	19.096	
800.0	799.8	801.8	801.8	1.7	1.7	175.26	1.5	53.9	60.9	57.5	3.35	18.197	
900.0	899.5	901.5	901.5	1.9	1.9	175.84	1.5	53.9	69.6	65.8	3.78	18.410	
1,000.0	998.7	1,000.7	1,000.7	2.2	2.1	176.45	1.5	53.9	81.7	77.5	4.21	19.399	
1,100.0	1,097.5	1,099.5	1,099.5	2.4	2.4	177.00	1.5	53.9	97.4	92.7	4.65	20.947	
1,200.0	1,195.6	1,197.6	1,197.6	2.8	2.6	177.48	1.5	53.9	116.4	111.3	5.08	22.908	
1,300.0	1,293.1	1,299.8	1,299.8	3.2	2.8	177.81	1.7	52.2	137.2	131.7	5.51	24.918	
1,400.0	1,389.6	1,402.9	1,402.8	3.7	3.0	177.96	2.4	46.8	158.0	152.1	5.92	26.677	
1,500.0	1,485.3	1,506.9	1,506.3	4.2	3.2	177.98	3.7	37.6	178.7	172.3	6.35	28.145	
1,600.0	1,579.8	1,611.6	1,610.2	4.8	3.5	177.92	5.4	24.7	199.2	192.4	6.79	29.336	
1,700.0	1,673.9	1,717.6	1,714.8	5.5	3.8	177.79	7.8	7.7	217.5	210.2	7.29	29.823	
1,800.0	1,768.0	1,824.9	1,819.9	6.1	4.1	177.58	10.6	-13.3	232.1	224.3	7.82	29.698	
1,900.0	1,862.1	1,932.6	1,924.6	6.8	4.5	177.28	14.1	-38.4	243.1	234.7	8.36	29.085	
2,000.0	1,956.2	2,032.1	2,021.0	7.5	4.9	176.98	17.4	-63.1	252.4	243.5	8.91	28.336	
2,100.0	2,050.3	2,131.7	2,117.4	8.2	5.4	176.71	20.8	-87.8	261.7	252.3	9.45	27.692	
2,200.0	2,144.4	2,231.3	2,213.8	8.9	5.8	176.45	24.2	-112.6	271.0	261.0	10.01	27.066	
2,300.0	2,238.5	2,330.8	2,310.1	9.6	6.3	176.22	27.5	-137.3	280.4	269.8	10.58	26.492	
2,400.0	2,332.6	2,430.4	2,406.5	10.3	6.8	175.99	30.9	-162.0	289.7	278.6	11.16	25.962	
2,500.0	2,426.6	2,529.9	2,502.9	11.0	7.2	175.78	34.3	-186.8	299.1	287.3	11.74	25.472	
2,600.0	2,520.7	2,629.5	2,599.3	11.8	7.7	175.59	37.7	-211.5	308.4	296.1	12.33	25.019	
2,700.0	2,614.8	2,729.0	2,695.6	12.5	8.2	175.40	41.0	-236.2	317.8	304.9	12.92	24.599	
2,800.0	2,708.9	2,828.6	2,792.0	13.2	8.7	175.23	44.4	-260.9	327.2	313.7	13.51	24.208	
2,900.0	2,803.0	2,928.1	2,888.4	13.9	9.2	175.06	47.8	-285.7	336.5	322.4	14.11	23.845	
3,000.0	2,897.1	3,027.7	2,984.8	14.6	9.8	174.91	51.2	-310.4	345.9	331.2	14.72	23.506	
3,100.0	2,991.2	3,127.3	3,081.2	15.3	10.3	174.76	54.5	-335.1	355.3	339.9	15.32	23.190	
3,200.0	3,085.3	3,226.8	3,177.5	16.1	10.8	174.62	57.9	-359.9	364.6	348.7	15.93	22.894	
3,300.0	3,179.4	3,326.4	3,273.9	16.8	11.3	174.49	61.3	-384.6	374.0	357.5	16.54	22.616	
3,400.0	3,273.5	3,425.9	3,370.3	17.5	11.8	174.36	64.7	-409.3	383.4	366.2	17.15	22.356	
3,500.0	3,367.6	3,525.5	3,466.7	18.2	12.4	174.24	68.0	-434.1	392.8	375.0	17.76	22.111	
3,600.0	3,461.7	3,625.0	3,563.0	19.0	12.9	174.13	71.4	-458.8	402.1	383.8	18.38	21.880	
3,700.0	3,555.8	3,724.6	3,659.4	19.7	13.4	174.02	74.8	-483.5	411.5	392.5	19.00	21.663	
3,800.0	3,649.8	3,824.2	3,755.8	20.4	13.9	173.91	78.2	-508.2	420.9	401.3	19.62	21.457	
3,900.0	3,743.9	3,923.7	3,852.2	21.1	14.5	173.81	81.5	-533.0	430.3	410.1	20.24	21.263	
4,000.0	3,838.0	4,023.3	3,948.5	21.9	15.0	173.72	84.9	-557.7	439.7	418.8	20.86	21.079	
4,100.0	3,932.1	4,122.8	4,044.9	22.6	15.5	173.63	88.3	-582.4	449.1	427.6	21.48	20.904	
4,200.0	4,026.2	4,222.4	4,141.3	23.3	16.1	173.54	91.7	-607.2	458.5	436.3	22.11	20.738	
4,300.0	4,120.3	4,321.9	4,237.7	24.0	16.6	173.45	95.0	-631.9	467.8	445.1	22.73	20.580	
4,400.0	4,214.4	4,421.5	4,334.0	24.8	17.1	173.37	98.4	-656.6	477.2	453.9	23.36	20.430	
4,500.0	4,308.5	4,521.0	4,430.4	25.5	17.7	173.30	101.8	-681.3	486.6	462.6	23.99	20.287	
4,600.0	4,402.6	4,620.6	4,526.8	26.2	18.2	173.22	105.2	-706.1	496.0	471.4	24.62	20.150	
4,700.0	4,496.7	4,720.2	4,623.2	26.9	18.7	173.15	108.5	-730.8	505.4	480.2	25.24	20.020	
4,800.0	4,590.8	4,819.7	4,719.6	27.7	19.3	173.08	111.9	-755.5	514.8	488.9	25.88	19.895	
4,900.0	4,684.9	4,919.3	4,815.9	28.4	19.8	173.01	115.3	-780.3	524.2	497.7	26.51	19.776	
5,000.0	4,778.9	5,018.8	4,912.3	29.1	20.3	172.95	118.6	-805.0	533.6	506.4	27.14	19.662	
5,100.0	4,873.0	5,118.4	5,008.7	29.8	20.9	172.88	122.0	-829.7	543.0	515.2	27.77	19.552	

CC - Min centre to center distance or convergent point, SF - min separation factor, ES - min ellipse separation

Company:	Bayswater Exploration & Production, LLC	Local Co-ordinate Reference:	Well Mojack C-28HN
Project:	SEC.28-T7N-R64W	TVD Reference:	WELL @ 4906.5ft (RKB - 22.5')
Reference Site:	Mojack 28-C Pad (West) Sec.28-T7N-R64W	MD Reference:	WELL @ 4906.5ft (RKB - 22.5')
Site Error:	0.0ft	North Reference:	True
Reference Well:	Mojack C-28HN	Survey Calculation Method:	Minimum Curvature
Well Error:	0.0ft	Output errors are at	2.00 sigma
Reference Wellbore	Wellbore #1	Database:	Landmark
Reference Design:	Plan #1 (4-08-14)	Offset TVD Reference:	Offset Datum

Offset Design Mojack 28-C Pad (West) Sec.28-T7N-R64W - Mojack F-28HN - Wellbore #1 - Plan #1 (4-08-14)													Offset Site Error:	0.0 ft
Survey Program: 0-MWDD													Offset Well Error:	0.0 ft
Reference		Offset		Semi Major Axis			Distance							Warning
Measured Depth (ft)	Vertical Depth (ft)	Measured Depth (ft)	Vertical Depth (ft)	Reference (ft)	Offset (ft)	Highside Toolface (°)	Offset Wellbore Centre +N/-S (ft)	+E/-W (ft)	Between Centres (ft)	Between Ellipses (ft)	Minimum Separation (ft)	Separation Factor		
5,200.0	4,967.1	5,217.9	5,105.1	30.6	21.4	172.82	125.4	-854.5	552.4	524.0	28.40	19.447		
5,300.0	5,061.2	5,317.5	5,201.4	31.3	21.9	172.76	128.8	-879.2	561.8	532.7	29.04	19.347		
5,400.0	5,155.3	5,417.0	5,297.8	32.0	22.5	172.71	132.1	-903.9	571.2	541.5	29.67	19.250		
5,500.0	5,249.4	5,516.6	5,394.2	32.8	23.0	172.65	135.5	-928.6	580.6	550.3	30.31	19.157		
5,600.0	5,343.5	5,616.2	5,490.6	33.5	23.5	172.60	138.9	-953.4	590.0	559.0	30.94	19.067		
5,700.0	5,437.6	5,715.7	5,586.9	34.2	24.1	172.55	142.3	-978.1	599.4	567.8	31.58	18.981		
5,800.0	5,531.7	5,813.7	5,681.8	34.9	24.6	172.50	145.6	-1,002.4	608.8	576.5	32.21	18.901		
5,900.0	5,625.8	5,900.0	5,765.7	35.7	25.0	172.48	148.3	-1,022.6	619.6	586.8	32.78	18.902		
6,000.0	5,719.9	5,978.7	5,842.7	36.4	25.3	172.51	150.6	-1,038.9	633.2	599.9	33.30	19.017		
6,100.0	5,814.0	6,059.6	5,922.2	37.1	25.5	172.57	152.5	-1,053.3	649.6	615.8	33.80	19.216		
6,200.0	5,908.0	6,139.7	6,001.4	37.9	25.8	172.67	154.2	-1,065.5	668.7	634.4	34.29	19.499		
6,300.0	6,002.1	6,218.9	6,079.9	38.6	25.9	172.80	155.5	-1,075.3	690.4	655.7	34.77	19.860		
6,400.0	6,096.2	6,300.0	6,160.6	39.3	26.1	172.96	156.6	-1,083.2	714.8	679.6	35.23	20.293		
6,500.0	6,190.3	6,374.0	6,234.5	40.0	26.3	173.13	157.3	-1,088.3	741.8	706.1	35.66	20.802		
6,600.0	6,284.4	6,449.8	6,310.2	40.8	26.4	173.32	157.8	-1,091.7	771.3	735.2	36.09	21.373		
6,700.0	6,378.5	6,524.4	6,384.7	41.5	26.5	173.53	158.0	-1,093.0	803.3	766.7	36.50	22.005		
6,800.0	6,472.6	6,614.2	6,474.6	42.2	26.5	173.78	158.0	-1,093.1	836.9	799.9	36.94	22.656		
6,900.0	6,566.6	6,712.6	6,573.0	42.9	26.7	-158.96	157.0	-1,093.1	870.6	833.6	37.00	23.529		
7,000.0	6,658.2	6,823.2	6,681.8	43.4	26.8	-134.04	138.5	-1,093.9	902.6	865.2	37.36	24.161		
7,100.0	6,744.2	6,937.1	6,787.2	43.9	26.8	-118.55	96.0	-1,095.8	931.3	893.3	38.02	24.495		
7,200.0	6,821.3	7,054.1	6,883.2	44.4	26.9	-108.76	29.7	-1,098.6	955.6	916.8	38.81	24.622		
7,300.0	6,886.8	7,173.2	6,963.2	44.8	27.0	-102.29	-58.1	-1,102.4	974.5	934.9	39.57	24.629		
7,400.0	6,938.3	7,293.0	7,021.6	45.1	27.2	-97.94	-162.4	-1,106.9	987.2	947.0	40.22	24.542		
7,500.0	6,973.8	7,411.0	7,054.3	45.3	27.5	-95.16	-275.4	-1,111.8	993.3	952.5	40.79	24.349		
7,600.0	6,993.8	7,512.9	7,071.6	45.5	27.9	-94.42	-375.7	-1,116.1	994.0	952.3	41.75	23.811		
7,700.0	7,009.1	7,619.7	7,082.4	45.8	28.4	-94.11	-481.8	-1,120.7	993.6	950.0	43.57	22.805		
7,800.0	7,016.0	7,724.4	7,083.6	46.1	29.1	-93.78	-586.4	-1,125.2	993.2	947.5	45.69	21.738		
7,900.0	7,016.0	7,824.4	7,082.0	46.5	29.8	-93.69	-686.3	-1,129.5	993.0	945.1	47.93	20.720		
8,000.0	7,015.4	7,924.4	7,080.3	47.0	30.6	-93.64	-786.2	-1,133.8	993.0	942.6	50.31	19.738		
8,100.0	7,014.7	8,024.4	7,078.7	47.5	31.6	-93.58	-886.1	-1,138.2	992.9	940.0	52.85	18.785		
8,200.0	7,014.1	8,124.4	7,077.1	48.1	32.6	-93.52	-985.9	-1,142.5	992.8	937.2	55.54	17.873		
8,300.0	7,013.4	8,224.4	7,075.5	48.7	33.8	-93.47	-1,085.8	-1,146.8	992.7	934.3	58.36	17.010		
8,400.0	7,012.8	8,324.4	7,073.8	49.4	35.0	-93.41	-1,185.7	-1,151.1	992.6	931.3	61.28	16.198		
8,500.0	7,012.1	8,424.4	7,072.2	50.2	36.2	-93.36	-1,285.6	-1,155.4	992.5	928.2	64.30	15.437		
8,600.0	7,011.5	8,524.4	7,070.6	51.0	37.6	-93.30	-1,385.5	-1,159.7	992.4	925.0	67.39	14.727		
8,700.0	7,010.8	8,624.4	7,069.0	51.9	39.0	-93.24	-1,485.4	-1,164.0	992.4	921.8	70.56	14.065		
8,800.0	7,010.2	8,724.4	7,067.3	52.9	40.4	-93.19	-1,585.3	-1,168.3	992.3	918.5	73.78	13.449		
8,900.0	7,009.5	8,824.4	7,065.7	53.9	41.9	-93.13	-1,685.2	-1,172.6	992.2	915.1	77.06	12.876		
9,000.0	7,008.9	8,924.3	7,064.1	54.9	43.4	-93.08	-1,785.1	-1,177.0	992.1	911.7	80.39	12.342		
9,100.0	7,008.2	9,024.3	7,062.5	56.0	45.0	-93.02	-1,884.9	-1,181.3	992.0	908.3	83.75	11.845		
9,200.0	7,007.6	9,124.3	7,060.9	57.2	46.6	-92.96	-1,984.8	-1,185.6	992.0	904.8	87.16	11.381		
9,300.0	7,006.9	9,224.3	7,059.2	58.4	48.2	-92.91	-2,084.7	-1,189.9	991.9	901.3	90.59	10.949		
9,400.0	7,006.3	9,324.3	7,057.6	59.7	49.8	-92.85	-2,184.6	-1,194.2	991.8	897.7	94.06	10.545		
9,500.0	7,005.6	9,424.3	7,056.0	60.9	51.5	-92.80	-2,284.5	-1,198.5	991.7	894.2	97.55	10.167		
9,600.0	7,005.0	9,524.3	7,054.4	62.3	53.1	-92.74	-2,384.4	-1,202.8	991.7	890.6	101.06	9.812		
9,700.0	7,004.3	9,624.3	7,052.7	63.6	54.8	-92.68	-2,484.3	-1,207.1	991.6	887.0	104.60	9.480		
9,800.0	7,003.7	9,724.3	7,051.1	65.0	56.5	-92.63	-2,584.2	-1,211.5	991.5	883.4	108.15	9.168		
9,900.0	7,003.0	9,824.3	7,049.5	66.4	58.2	-92.57	-2,684.1	-1,215.8	991.4	879.7	111.72	8.874		
10,000.0	7,002.4	9,924.3	7,047.9	67.9	60.0	-92.51	-2,783.9	-1,220.1	991.4	876.1	115.31	8.597		
10,100.0	7,001.7	10,024.3	7,046.2	69.4	61.7	-92.46	-2,883.8	-1,224.4	991.3	872.4	118.91	8.336		
10,200.0	7,001.1	10,124.3	7,044.6	70.9	63.4	-92.40	-2,983.7	-1,228.7	991.2	868.7	122.53	8.090		
10,300.0	7,000.4	10,224.3	7,043.0	72.4	65.2	-92.35	-3,083.6	-1,233.0	991.2	865.0	126.15	7.857		

CC - Min centre to center distance or convergent point, SF - min separation factor, ES - min ellipse separation

Company:	Bayswater Exploration & Production, LLC	Local Co-ordinate Reference:	Well Mojack C-28HN
Project:	SEC.28-T7N-R64W	TVD Reference:	WELL @ 4906.5ft (RKB - 22.5')
Reference Site:	Mojack 28-C Pad (West) Sec.28-T7N-R64W	MD Reference:	WELL @ 4906.5ft (RKB - 22.5')
Site Error:	0.0ft	North Reference:	True
Reference Well:	Mojack C-28HN	Survey Calculation Method:	Minimum Curvature
Well Error:	0.0ft	Output errors are at	2.00 sigma
Reference Wellbore	Wellbore #1	Database:	Landmark
Reference Design:	Plan #1 (4-08-14)	Offset TVD Reference:	Offset Datum

Offset Design Mojack 28-C Pad (West) Sec.28-T7N-R64W - Mojack F-28HN - Wellbore #1 - Plan #1 (4-08-14)												Offset Site Error:	0.0 ft
Survey Program: 0-MWD												Offset Well Error:	0.0 ft
Reference		Offset		Semi Major Axis			Offset Wellbore Centre		Distance			Warning	
Measured Depth (ft)	Vertical Depth (ft)	Measured Depth (ft)	Vertical Depth (ft)	Reference (ft)	Offset (ft)	Highside Toolface (°)	+N/-S (ft)	+E/-W (ft)	Between Centres (ft)	Between Ellipses (ft)	Minimum Separation (ft)		
10,400.0	6,999.8	10,324.3	7,041.4	73.9	67.0	-92.29	-3,183.5	-1,237.3	991.1	861.3	129.79	7.636	
10,500.0	6,999.1	10,424.3	7,039.8	75.5	68.7	-92.23	-3,283.4	-1,241.6	991.0	857.6	133.44	7.427	
10,600.0	6,998.5	10,524.3	7,038.1	77.1	70.5	-92.18	-3,383.3	-1,245.9	991.0	853.9	137.09	7.228	
10,700.0	6,997.9	10,624.3	7,036.5	78.7	72.3	-92.12	-3,483.2	-1,250.3	990.9	850.2	140.76	7.040	
10,800.0	6,997.2	10,724.3	7,034.9	80.3	74.1	-92.06	-3,583.1	-1,254.6	990.8	846.4	144.43	6.860	
10,900.0	6,996.6	10,824.3	7,033.3	81.9	75.9	-92.01	-3,683.0	-1,258.9	990.8	842.7	148.11	6.689	
11,000.0	6,995.9	10,924.3	7,031.6	83.5	77.7	-91.95	-3,782.8	-1,263.2	990.7	838.9	151.80	6.527	
11,100.0	6,995.3	11,024.2	7,030.0	85.2	79.5	-91.90	-3,882.7	-1,267.5	990.7	835.2	155.49	6.371	
11,200.0	6,994.6	11,124.2	7,028.4	86.9	81.3	-91.84	-3,982.6	-1,271.8	990.6	831.4	159.19	6.223	
11,300.0	6,994.0	11,224.2	7,026.8	88.5	83.2	-91.78	-4,082.5	-1,276.1	990.5	827.7	162.89	6.081	
11,400.0	6,993.3	11,324.2	7,025.2	90.2	85.0	-91.73	-4,182.4	-1,280.4	990.5	823.9	166.60	5.945	
11,500.0	6,992.7	11,424.2	7,023.5	91.9	86.8	-91.67	-4,282.3	-1,284.8	990.4	820.1	170.32	5.815	
11,600.0	6,992.0	11,524.2	7,021.9	93.6	88.6	-91.61	-4,382.2	-1,289.1	990.4	816.3	174.03	5.691	
11,700.0	6,991.4	11,624.2	7,020.3	95.4	90.5	-91.56	-4,482.1	-1,293.4	990.3	812.6	177.76	5.571	
11,800.0	6,990.7	11,724.2	7,018.7	97.1	92.3	-91.50	-4,582.0	-1,297.7	990.3	808.9	181.40	5.459	
11,826.1	6,990.5	11,750.4	7,018.2	97.5	92.7	-91.49	-4,608.1	-1,298.8	990.3	808.0	182.28	5.433	
11,900.0	6,990.1	11,764.8	7,018.0	98.8	92.9	-91.48	-4,622.5	-1,299.4	992.0	808.1	183.88	5.395	
11,911.0	6,990.0	11,764.8	7,018.0	99.0	92.9	-91.48	-4,622.5	-1,299.4	992.7	808.6	184.08	5.393 SF	

Company:	Bayswater Exploration & Production, LLC	Local Co-ordinate Reference:	Well Mojack C-28HN
Project:	SEC.28-T7N-R64W	TVD Reference:	WELL @ 4906.5ft (RKB - 22.5')
Reference Site:	Mojack 28-C Pad (West) Sec.28-T7N-R64W	MD Reference:	WELL @ 4906.5ft (RKB - 22.5')
Site Error:	0.0ft	North Reference:	True
Reference Well:	Mojack C-28HN	Survey Calculation Method:	Minimum Curvature
Well Error:	0.0ft	Output errors are at	2.00 sigma
Reference Wellbore	Wellbore #1	Database:	Landmark
Reference Design:	Plan #1 (4-08-14)	Offset TVD Reference:	Offset Datum

Offset Design Mojack 28-C Pad (West) Sec.28-T7N-R64W - Mojack G-28HN - Wellbore #1 - Plan #1 (4-08-14)												Offset Site Error:	0.0 ft
Survey Program: 0-MWWD												Offset Well Error:	0.0 ft
Measured Depth (ft)	Vertical Depth (ft)	Measured Depth (ft)	Vertical Depth (ft)	Reference (ft)	Offset (ft)	Highside Toolface (°)	Offset Wellbore Centre +N/-S (ft)	+E/-W (ft)	Between Centres (ft)	Between Ellipses (ft)	Minimum Separation (ft)	Separation Factor	Warning
0.0	0.0	2.0	2.0	0.0	0.0	88.56	1.8	72.3	72.3	72.3	0.00	N/A	
100.0	100.0	102.0	102.0	0.1	0.1	88.56	1.8	72.3	72.3	72.0	0.23	315.260	
200.0	200.0	202.0	202.0	0.3	0.3	88.56	1.8	72.3	72.3	71.6	0.68	106.479	
300.0	300.0	302.0	302.0	0.6	0.6	88.56	1.8	72.3	72.3	71.1	1.13	64.057	
400.0	400.0	402.0	402.0	0.8	0.8	88.56	1.8	72.3	72.3	70.7	1.58	45.807	
500.0	500.0	502.0	502.0	1.0	1.0	88.56	1.8	72.3	72.3	70.2	2.03	35.650	
600.0	600.0	602.0	602.0	1.2	1.2	88.56	1.8	72.3	72.3	69.8	2.48	29.180 CC, ES	
700.0	700.0	702.0	702.0	1.4	1.5	174.89	1.8	72.3	74.0	71.1	2.92	25.389	
800.0	799.8	801.8	801.8	1.7	1.7	175.22	1.8	72.3	79.2	75.9	3.35	23.679	
900.0	899.5	901.5	901.5	1.9	1.9	175.68	1.8	72.3	87.9	84.1	3.78	23.264 SF	
1,000.0	998.7	1,000.7	1,000.7	2.2	2.1	176.19	1.8	72.3	100.1	95.9	4.21	23.752	
1,100.0	1,097.5	1,099.5	1,099.5	2.4	2.4	176.68	1.8	72.3	115.7	111.0	4.65	24.892	
1,200.0	1,195.6	1,197.6	1,197.6	2.8	2.6	177.13	1.8	72.3	134.7	129.7	5.08	26.515	
1,300.0	1,293.1	1,295.1	1,295.1	3.2	2.8	177.52	1.8	72.3	157.2	151.7	5.52	28.503	
1,400.0	1,389.6	1,391.6	1,391.6	3.7	3.0	177.85	1.8	72.3	183.1	177.1	5.95	30.770	
1,500.0	1,485.3	1,494.1	1,494.1	4.2	3.2	178.08	2.1	70.7	210.9	204.5	6.38	33.044	
1,600.0	1,579.8	1,598.3	1,598.1	4.8	3.5	178.14	3.1	65.5	238.6	231.8	6.81	35.045	
1,700.0	1,673.9	1,704.1	1,703.6	5.5	3.7	178.08	4.9	56.4	264.2	256.9	7.29	36.231	
1,800.0	1,768.0	1,811.9	1,810.5	6.1	3.9	177.90	7.4	43.2	286.2	278.4	7.79	36.716	
1,900.0	1,862.1	1,921.3	1,918.5	6.8	4.2	177.62	10.8	25.8	304.5	296.2	8.32	36.624	
2,000.0	1,956.2	2,022.0	2,017.4	7.5	4.5	177.31	14.4	7.3	320.4	311.6	8.84	36.262	
2,100.0	2,050.3	2,120.7	2,114.4	8.2	4.9	177.04	17.9	-10.8	336.3	326.9	9.37	35.900	
2,200.0	2,144.4	2,219.5	2,211.3	8.9	5.2	176.80	21.4	-29.0	352.2	342.3	9.90	35.577	
2,300.0	2,238.5	2,318.2	2,308.3	9.6	5.5	176.57	24.9	-47.1	368.1	357.6	10.44	35.239	
2,400.0	2,332.6	2,416.9	2,405.3	10.3	5.9	176.36	28.4	-65.3	384.0	373.0	10.99	34.926	
2,500.0	2,426.6	2,515.6	2,502.2	11.0	6.2	176.17	31.9	-83.5	399.8	388.3	11.55	34.628	
2,600.0	2,520.7	2,614.3	2,599.2	11.8	6.6	176.00	35.4	-101.6	415.7	403.6	12.10	34.345	
2,700.0	2,614.8	2,713.1	2,696.2	12.5	7.0	175.84	38.9	-119.8	431.6	419.0	12.67	34.077	
2,800.0	2,708.9	2,811.8	2,793.2	13.2	7.4	175.68	42.5	-137.9	447.5	434.3	13.23	33.824	
2,900.0	2,803.0	2,910.5	2,890.1	13.9	7.7	175.54	46.0	-156.1	463.4	449.6	13.80	33.585	
3,000.0	2,897.1	3,009.2	2,987.1	14.6	8.1	175.41	49.5	-174.3	479.3	465.0	14.37	33.358	
3,100.0	2,991.2	3,108.0	3,084.1	15.3	8.5	175.29	53.0	-192.4	495.3	480.3	14.94	33.143	
3,200.0	3,085.3	3,206.7	3,181.0	16.1	8.9	175.17	56.5	-210.6	511.2	495.6	15.52	32.940	
3,300.0	3,179.4	3,305.4	3,278.0	16.8	9.3	175.06	60.0	-228.8	527.1	511.0	16.10	32.747	
3,400.0	3,273.5	3,404.1	3,375.0	17.5	9.7	174.96	63.5	-246.9	543.0	526.3	16.67	32.564	
3,500.0	3,367.6	3,502.8	3,472.0	18.2	10.1	174.87	67.0	-265.1	558.9	541.7	17.26	32.390	
3,600.0	3,461.7	3,601.6	3,568.9	19.0	10.5	174.78	70.5	-283.2	574.8	557.0	17.84	32.225	
3,700.0	3,555.8	3,700.3	3,665.9	19.7	10.9	174.69	74.0	-301.4	590.7	572.3	18.42	32.068	
3,800.0	3,649.8	3,799.0	3,762.9	20.4	11.3	174.61	77.6	-319.6	606.7	587.7	19.01	31.919	
3,900.0	3,743.9	3,897.7	3,859.9	21.1	11.7	174.53	81.1	-337.7	622.6	603.0	19.59	31.777	
4,000.0	3,838.0	3,996.4	3,956.8	21.9	12.1	174.46	84.6	-355.9	638.5	618.3	20.18	31.641	
4,100.0	3,932.1	4,095.2	4,053.8	22.6	12.5	174.39	88.1	-374.1	654.4	633.7	20.77	31.512	
4,200.0	4,026.2	4,193.9	4,150.8	23.3	12.9	174.32	91.6	-392.2	670.4	649.0	21.36	31.388	
4,300.0	4,120.3	4,292.6	4,247.7	24.0	13.3	174.26	95.1	-410.4	686.3	664.3	21.95	31.270	
4,400.0	4,214.4	4,391.3	4,344.7	24.8	13.8	174.20	98.6	-428.5	702.2	679.7	22.54	31.156	
4,500.0	4,308.5	4,490.0	4,441.7	25.5	14.2	174.14	102.1	-446.7	718.1	695.0	23.13	31.048	
4,600.0	4,402.6	4,588.8	4,538.7	26.2	14.6	174.08	105.6	-464.9	734.1	710.3	23.72	30.944	
4,700.0	4,496.7	4,687.5	4,635.6	26.9	15.0	174.03	109.2	-483.0	750.0	725.7	24.31	30.845	
4,800.0	4,590.8	4,786.2	4,732.6	27.7	15.4	173.98	112.7	-501.2	765.9	741.0	24.91	30.749	
4,900.0	4,684.9	4,884.9	4,829.6	28.4	15.8	173.93	116.2	-519.3	781.8	756.3	25.50	30.657	
5,000.0	4,778.9	4,983.7	4,926.6	29.1	16.2	173.88	119.7	-537.5	797.8	771.7	26.10	30.569	
5,100.0	4,873.0	5,082.4	5,023.5	29.8	16.6	173.84	123.2	-555.7	813.7	787.0	26.69	30.484	

CC - Min centre to center distance or convergent point, SF - min separation factor, ES - min ellipse separation

Company:	Bayswater Exploration & Production, LLC	Local Co-ordinate Reference:	Well Mojack C-28HN
Project:	SEC.28-T7N-R64W	TVD Reference:	WELL @ 4906.5ft (RKB - 22.5')
Reference Site:	Mojack 28-C Pad (West) Sec.28-T7N-R64W	MD Reference:	WELL @ 4906.5ft (RKB - 22.5')
Site Error:	0.0ft	North Reference:	True
Reference Well:	Mojack C-28HN	Survey Calculation Method:	Minimum Curvature
Well Error:	0.0ft	Output errors are at	2.00 sigma
Reference Wellbore	Wellbore #1	Database:	Landmark
Reference Design:	Plan #1 (4-08-14)	Offset TVD Reference:	Offset Datum

Offset Design Mojack 28-C Pad (West) Sec.28-T7N-R64W - Mojack G-28HN - Wellbore #1 - Plan #1 (4-08-14)												Offset Site Error:	0.0 ft
Survey Program: 0-MWD												Offset Well Error:	0.0 ft
Reference	Offset	Semi Major Axis		Distance									
Measured Depth (ft)	Vertical Depth (ft)	Measured Depth (ft)	Vertical Depth (ft)	Reference (ft)	Offset (ft)	Highside Toolface (°)	Offset Wellbore Centre +N/-S (ft)	+E/-W (ft)	Between Centres (ft)	Between Ellipses (ft)	Minimum Separation (ft)	Separation Factor	Warning
5,200.0	4,967.1	5,181.1	5,120.5	30.6	17.1	173.79	126.7	-573.8	829.6	802.3	27.29	30.403	
5,300.0	5,061.2	5,279.8	5,217.5	31.3	17.5	173.75	130.2	-592.0	845.6	817.7	27.88	30.324	
5,400.0	5,155.3	5,378.5	5,314.4	32.0	17.9	173.71	133.7	-610.2	861.5	833.0	28.48	30.248	
5,500.0	5,249.4	5,477.3	5,411.4	32.8	18.3	173.67	137.2	-628.3	877.4	848.3	29.08	30.175	
5,600.0	5,343.5	5,576.0	5,508.4	33.5	18.7	173.64	140.7	-646.5	893.4	863.7	29.68	30.104	
5,700.0	5,437.6	5,674.7	5,605.4	34.2	19.1	173.60	144.3	-664.6	909.3	879.0	30.27	30.036	
5,800.0	5,531.7	5,773.4	5,702.3	34.9	19.5	173.57	147.8	-682.8	925.2	894.3	30.87	29.970	
5,900.0	5,625.8	5,872.1	5,799.3	35.7	20.0	173.53	151.3	-701.0	941.2	909.7	31.47	29.906	
6,000.0	5,719.9	5,962.6	5,888.2	36.4	20.3	173.50	154.5	-717.5	957.2	925.2	32.04	29.876	
6,100.0	5,814.0	6,036.7	5,961.2	37.1	20.6	173.50	156.8	-729.6	975.3	942.7	32.54	29.969	
6,200.0	5,908.0	6,100.0	6,023.9	37.9	20.7	173.52	158.5	-738.4	995.8	962.8	33.01	30.169	

Company:	Bayswater Exploration & Production, LLC	Local Co-ordinate Reference:	Well Mojack C-28HN
Project:	SEC.28-T7N-R64W	TVD Reference:	WELL @ 4906.5ft (RKB - 22.5')
Reference Site:	Mojack 28-C Pad (West) Sec.28-T7N-R64W	MD Reference:	WELL @ 4906.5ft (RKB - 22.5')
Site Error:	0.0ft	North Reference:	True
Reference Well:	Mojack C-28HN	Survey Calculation Method:	Minimum Curvature
Well Error:	0.0ft	Output errors are at	2.00 sigma
Reference Wellbore	Wellbore #1	Database:	Landmark
Reference Design:	Plan #1 (4-08-14)	Offset TVD Reference:	Offset Datum

Offset Design Mojack 28-C Pad (West) Sec.28-T7N-R64W - Mojack H-28HN - Wellbore #1 - Plan #1 (4-08-14)													Offset Site Error:	0.0 ft
Survey Program: 0-MWD													Offset Well Error:	0.0 ft
Reference		Offset		Semi Major Axis			Distance							Warning
Measured Depth (ft)	Vertical Depth (ft)	Measured Depth (ft)	Vertical Depth (ft)	Reference (ft)	Offset (ft)	Highside Toolface (°)	Offset Wellbore Centre +N/-S (ft)	+E/-W (ft)	Between Centres (ft)	Between Ellipses (ft)	Minimum Separation (ft)	Separation Factor		
0.0	0.0	3.0	3.0	0.0	0.0	88.61	2.2	90.0	90.1	90.1	0.00	N/A		
100.0	100.0	103.0	103.0	0.1	0.1	88.61	2.2	90.0	90.1	89.8	0.23	389.040		
200.0	200.0	203.0	203.0	0.3	0.3	88.61	2.2	90.0	90.1	89.4	0.68	132.248		
300.0	300.0	303.0	303.0	0.6	0.6	88.61	2.2	90.0	90.1	88.9	1.13	79.664		
400.0	400.0	403.0	403.0	0.8	0.8	88.61	2.2	90.0	90.1	88.5	1.58	57.000		
500.0	500.0	503.0	503.0	1.0	1.0	88.61	2.2	90.0	90.1	88.0	2.03	44.376		
600.0	600.0	603.0	603.0	1.2	1.2	88.61	2.2	90.0	90.1	87.6	2.48	36.329 CC, ES		
700.0	700.0	703.0	703.0	1.4	1.5	174.92	2.2	90.0	91.8	88.9	2.92	31.467		
800.0	799.8	802.8	802.8	1.7	1.7	175.18	2.2	90.0	97.0	93.7	3.35	28.977		
900.0	899.5	902.5	902.5	1.9	1.9	175.57	2.2	90.0	105.7	101.9	3.78	27.954 SF		
1,000.0	998.7	1,001.7	1,001.7	2.2	2.1	176.01	2.2	90.0	117.9	113.6	4.22	27.959		
1,100.0	1,097.5	1,100.5	1,100.5	2.4	2.4	176.46	2.2	90.0	133.5	128.8	4.65	28.705		
1,200.0	1,195.6	1,198.6	1,198.6	2.8	2.6	176.88	2.2	90.0	152.5	147.4	5.08	30.000		
1,300.0	1,293.1	1,296.1	1,296.1	3.2	2.8	177.26	2.2	90.0	175.0	169.5	5.52	31.712		
1,400.0	1,389.6	1,392.6	1,392.6	3.7	3.0	177.59	2.2	90.0	200.8	194.9	5.95	33.744		
1,500.0	1,485.3	1,488.3	1,488.3	4.2	3.2	177.87	2.2	90.0	230.1	223.7	6.39	36.025		
1,600.0	1,579.8	1,582.8	1,582.8	4.8	3.4	178.12	2.2	90.0	262.6	255.7	6.82	38.473		
1,700.0	1,673.9	1,685.4	1,685.4	5.5	3.7	178.28	2.6	88.8	295.3	288.0	7.31	40.383		
1,800.0	1,768.0	1,792.1	1,792.0	6.1	3.9	178.22	4.2	83.9	324.8	316.9	7.80	41.626		
1,900.0	1,862.1	1,901.0	1,900.5	6.8	4.1	177.99	7.0	75.0	350.7	342.4	8.31	42.224		
2,000.0	1,956.2	2,008.9	2,007.5	7.5	4.4	177.62	11.1	62.4	373.2	364.3	8.82	42.313		
2,100.0	2,050.3	2,106.6	2,104.3	8.2	4.6	177.27	15.1	49.8	394.5	385.2	9.33	42.272		
2,200.0	2,144.4	2,204.2	2,201.1	8.9	4.9	176.96	19.1	37.3	415.9	406.1	9.85	42.207		
2,300.0	2,238.5	2,301.9	2,297.8	9.6	5.2	176.68	23.2	24.7	437.3	426.9	10.38	42.127		
2,400.0	2,332.6	2,399.6	2,394.6	10.3	5.4	176.43	27.2	12.2	458.7	447.8	10.91	42.035		
2,500.0	2,426.6	2,497.2	2,491.4	11.0	5.7	176.20	31.2	-0.3	480.1	468.7	11.45	41.935		
2,600.0	2,520.7	2,594.9	2,588.1	11.8	6.0	175.98	35.2	-12.9	501.5	489.5	11.99	41.830		
2,700.0	2,614.8	2,692.5	2,684.9	12.5	6.3	175.79	39.3	-25.4	523.0	510.4	12.53	41.723		
2,800.0	2,708.9	2,790.2	2,781.7	13.2	6.6	175.61	43.3	-38.0	544.4	531.3	13.08	41.615		
2,900.0	2,803.0	2,887.9	2,878.5	13.9	6.9	175.45	47.3	-50.5	565.8	552.2	13.63	41.507		
3,000.0	2,897.1	2,985.5	2,975.2	14.6	7.2	175.29	51.4	-63.1	587.3	573.1	14.18	41.400		
3,100.0	2,991.2	3,083.2	3,072.0	15.3	7.5	175.15	55.4	-75.6	608.7	594.0	14.74	41.295		
3,200.0	3,085.3	3,180.9	3,168.8	16.1	7.8	175.02	59.4	-88.1	630.1	614.8	15.30	41.192		
3,300.0	3,179.4	3,278.5	3,265.5	16.8	8.1	174.89	63.4	-100.7	651.6	635.7	15.86	41.091		
3,400.0	3,273.5	3,376.2	3,362.3	17.5	8.4	174.78	67.5	-113.2	673.0	656.6	16.42	40.993		
3,500.0	3,367.6	3,473.9	3,459.1	18.2	8.7	174.67	71.5	-125.8	694.5	677.5	16.98	40.898		
3,600.0	3,461.7	3,571.5	3,555.9	19.0	9.0	174.57	75.5	-138.3	715.9	698.4	17.55	40.806		
3,700.0	3,555.8	3,669.2	3,652.6	19.7	9.3	174.47	79.6	-150.9	737.4	719.3	18.11	40.716		
3,800.0	3,649.8	3,766.8	3,749.4	20.4	9.7	174.38	83.6	-163.4	758.9	740.2	18.68	40.629		
3,900.0	3,743.9	3,864.5	3,846.2	21.1	10.0	174.29	87.6	-175.9	780.3	761.1	19.25	40.545		
4,000.0	3,838.0	3,962.2	3,942.9	21.9	10.3	174.21	91.6	-188.5	801.8	782.0	19.81	40.464		
4,100.0	3,932.1	4,059.8	4,039.7	22.6	10.6	174.13	95.7	-201.0	823.2	802.9	20.38	40.385		
4,200.0	4,026.2	4,157.5	4,136.5	23.3	10.9	174.06	99.7	-213.6	844.7	823.7	20.96	40.309		
4,300.0	4,120.3	4,255.2	4,233.3	24.0	11.2	173.99	103.7	-226.1	866.2	844.6	21.53	40.236		
4,400.0	4,214.4	4,352.8	4,330.0	24.8	11.6	173.92	107.7	-238.7	887.6	865.5	22.10	40.165		
4,500.0	4,308.5	4,450.5	4,426.8	25.5	11.9	173.86	111.8	-251.2	909.1	886.4	22.67	40.096		
4,600.0	4,402.6	4,548.2	4,523.6	26.2	12.2	173.80	115.8	-263.7	930.6	907.3	23.25	40.029		
4,700.0	4,496.7	4,645.8	4,620.3	26.9	12.5	173.74	119.8	-276.3	952.0	928.2	23.82	39.965		
4,800.0	4,590.8	4,743.5	4,717.1	27.7	12.9	173.69	123.9	-288.8	973.5	949.1	24.40	39.902		
4,900.0	4,684.9	4,841.1	4,813.9	28.4	13.2	173.64	127.9	-301.4	995.0	970.0	24.97	39.842		

Company:	Bayswater Exploration & Production, LLC	Local Co-ordinate Reference:	Well Mojack C-28HN
Project:	SEC.28-T7N-R64W	TVD Reference:	WELL @ 4906.5ft (RKB - 22.5')
Reference Site:	Mojack 28-C Pad (West) Sec.28-T7N-R64W	MD Reference:	WELL @ 4906.5ft (RKB - 22.5')
Site Error:	0.0ft	North Reference:	True
Reference Well:	Mojack C-28HN	Survey Calculation Method:	Minimum Curvature
Well Error:	0.0ft	Output errors are at	2.00 sigma
Reference Wellbore	Wellbore #1	Database:	Landmark
Reference Design:	Plan #1 (4-08-14)	Offset TVD Reference:	Offset Datum

Offset Design Robel 14-28 Pad Sec.28-T7N-R64W - Robel 12-28 - Wellbore #1 - Wellbore #1												Offset Site Error:	0.0 ft
Survey Program: 789-MWD												Offset Well Error:	0.0 ft
Reference		Offset		Semi Major Axis			Distance						
Measured Depth (ft)	Vertical Depth (ft)	Measured Depth (ft)	Vertical Depth (ft)	Reference (ft)	Offset (ft)	Highside Toolface (°)	Offset Wellbore Centre +N/-S (ft)	+E/-W (ft)	Between Centres (ft)	Between Ellipses (ft)	Minimum Separation (ft)	Separation Factor	Warning
9,400.0	7,006.3	7,040.0	6,953.2	59.7	19.3	87.95	-3,108.0	-2,373.0	985.3	919.5	65.86	14.960	
9,500.0	7,005.6	7,040.0	6,953.2	60.9	19.3	87.95	-3,108.0	-2,373.0	886.6	819.0	67.59	13.118	
9,600.0	7,005.0	7,040.0	6,953.2	62.3	19.3	87.95	-3,108.0	-2,373.0	788.2	718.8	69.32	11.370	
9,700.0	7,004.3	7,040.0	6,953.2	63.6	19.3	87.95	-3,108.0	-2,373.0	690.2	619.1	71.07	9.712	
9,800.0	7,003.7	7,040.5	6,953.7	65.0	19.3	88.15	-3,108.0	-2,373.0	592.9	520.1	72.81	8.143	
9,900.0	7,003.0	7,041.0	6,954.2	66.4	19.3	88.35	-3,108.0	-2,373.0	496.7	422.1	74.55	6.662	
10,000.0	7,002.4	7,041.5	6,954.7	67.9	19.3	88.54	-3,108.0	-2,373.0	402.3	326.0	76.31	5.272	
10,100.0	7,001.7	7,042.0	6,955.2	69.4	19.3	88.73	-3,108.0	-2,373.0	311.4	233.4	78.08	3.989	
10,200.0	7,001.1	7,042.5	6,955.7	70.9	19.3	88.92	-3,108.1	-2,373.1	228.4	148.5	79.85	2.860	
10,300.0	7,000.4	7,043.0	6,956.2	72.4	19.3	89.11	-3,108.1	-2,373.1	165.2	83.6	81.63	2.024	
10,374.2	7,000.0	7,043.3	6,956.5	73.5	19.3	89.24	-3,108.1	-2,373.1	147.6	64.7	82.95	1.780 CC, ES, SF	
10,400.0	6,999.8	7,043.4	6,956.6	73.9	19.3	89.29	-3,108.1	-2,373.1	149.9	66.5	83.41	1.797	
10,500.0	6,999.1	7,043.9	6,957.1	75.5	19.3	89.47	-3,108.1	-2,373.1	194.0	108.7	85.21	2.276	
10,600.0	6,998.5	7,044.4	6,957.6	77.1	19.3	89.65	-3,108.1	-2,373.1	269.8	182.8	87.00	3.101	
10,700.0	6,997.9	7,044.8	6,958.0	78.7	19.3	89.82	-3,108.1	-2,373.1	357.7	268.9	88.81	4.028	
10,800.0	6,997.2	7,045.3	6,958.4	80.3	19.3	89.99	-3,108.1	-2,373.1	450.6	360.0	90.61	4.973	
10,900.0	6,996.6	7,045.7	6,958.9	81.9	19.3	90.16	-3,108.1	-2,373.1	546.1	453.7	92.42	5.909	
11,000.0	6,995.9	7,046.1	6,959.3	83.5	19.3	90.33	-3,108.1	-2,373.1	643.0	548.7	94.24	6.823	
11,100.0	6,995.3	7,046.5	6,959.7	85.2	19.3	90.49	-3,108.1	-2,373.1	740.6	644.6	96.05	7.711	
11,200.0	6,994.6	7,047.0	6,960.1	86.9	19.3	90.65	-3,108.1	-2,373.1	838.9	741.0	97.87	8.571	
11,300.0	6,994.0	7,047.4	6,960.6	88.5	19.3	90.81	-3,108.1	-2,373.1	937.5	837.8	99.70	9.403	

Company:	Bayswater Exploration & Production, LLC	Local Co-ordinate Reference:	Well Mojack C-28HN
Project:	SEC.28-T7N-R64W	TVD Reference:	WELL @ 4906.5ft (RKB - 22.5')
Reference Site:	Mojack 28-C Pad (West) Sec.28-T7N-R64W	MD Reference:	WELL @ 4906.5ft (RKB - 22.5')
Site Error:	0.0ft	North Reference:	True
Reference Well:	Mojack C-28HN	Survey Calculation Method:	Minimum Curvature
Well Error:	0.0ft	Output errors are at	2.00 sigma
Reference Wellbore	Wellbore #1	Database:	Landmark
Reference Design:	Plan #1 (4-08-14)	Offset TVD Reference:	Offset Datum

Offset Design Robel 14-28 Pad Sec.28-T7N-R64W - Robel 19-28 (Vert.) - Wellbore #1 - Wellbore #1												Offset Site Error:	0.0 ft
Survey Program: 7335-UNKNOWN												Offset Well Error:	0.0 ft
Reference		Offset		Semi Major Axis			Distance						Warning
Measured Depth (ft)	Vertical Depth (ft)	Measured Depth (ft)	Vertical Depth (ft)	Reference (ft)	Offset (ft)	Highside Toolface (°)	Offset Wellbore Centre +N/-S (ft)	+E/-W (ft)	Between Centres (ft)	Between Ellipses (ft)	Minimum Separation (ft)	Separation Factor	
10,100.0	7,001.7	6,960.2	6,960.2	69.4	139.2	-91.66	-3,767.0	-2,047.6	941.4	742.4	198.97	4.731	
10,200.0	7,001.1	6,959.6	6,959.6	70.9	139.2	-91.48	-3,767.0	-2,047.6	844.1	643.3	200.75	4.205	
10,300.0	7,000.4	6,958.9	6,958.9	72.4	139.2	-91.30	-3,767.0	-2,047.6	747.5	544.9	202.53	3.691	
10,400.0	6,999.8	6,958.3	6,958.3	73.9	139.2	-91.12	-3,767.0	-2,047.6	651.9	447.6	204.31	3.191	
10,500.0	6,999.1	6,957.6	6,957.6	75.5	139.2	-90.94	-3,767.0	-2,047.6	557.9	351.8	206.10	2.707	
10,600.0	6,998.5	6,957.0	6,957.0	77.1	139.1	-90.76	-3,767.0	-2,047.6	466.4	258.6	207.89	2.244	
10,700.0	6,997.9	6,956.4	6,956.4	78.7	139.1	-90.58	-3,767.0	-2,047.6	379.3	169.6	209.68	1.809	
10,800.0	6,997.2	6,955.7	6,955.7	80.3	139.1	-90.39	-3,767.0	-2,047.6	300.2	88.7	211.48	1.420	Level 3
10,900.0	6,996.6	6,955.1	6,955.1	81.9	139.1	-90.21	-3,767.0	-2,047.6	237.5	24.2	213.28	1.114	Level 2
11,000.0	6,995.9	6,954.4	6,954.4	83.5	139.1	-90.03	-3,767.0	-2,047.6	206.6	-8.5	215.09	0.961	Level 1
11,018.6	6,995.8	6,954.3	6,954.3	83.9	139.1	-90.00	-3,767.0	-2,047.6	205.8	-9.6	215.42	0.955	Level 1, CC, ES, SF
11,100.0	6,995.3	6,953.8	6,953.8	85.2	139.1	-89.85	-3,767.0	-2,047.6	221.3	4.4	216.89	1.020	Level 2
11,200.0	6,994.6	6,953.1	6,953.1	86.9	139.1	-89.67	-3,767.0	-2,047.6	274.3	55.6	218.70	1.254	Level 3
11,300.0	6,994.0	6,952.5	6,952.5	88.5	139.0	-89.49	-3,767.0	-2,047.6	348.6	128.1	220.50	1.581	
11,400.0	6,993.3	6,951.8	6,951.8	90.2	139.0	-89.31	-3,767.0	-2,047.6	433.4	211.1	222.31	1.949	
11,500.0	6,992.7	6,951.2	6,951.2	91.9	139.0	-89.13	-3,767.0	-2,047.6	523.5	299.4	224.12	2.336	
11,600.0	6,992.0	6,950.5	6,950.5	93.6	139.0	-88.95	-3,767.0	-2,047.6	616.7	390.8	225.93	2.730	
11,700.0	6,991.4	6,949.9	6,949.9	95.4	139.0	-88.77	-3,767.0	-2,047.6	711.8	484.0	227.74	3.125	
11,800.0	6,990.7	6,949.2	6,949.2	97.1	139.0	-88.59	-3,767.0	-2,047.6	808.0	578.5	229.55	3.520	
11,900.0	6,990.1	6,948.6	6,948.6	98.8	139.0	-88.41	-3,767.0	-2,047.6	905.1	673.7	231.35	3.912	
11,911.0	6,990.0	6,948.5	6,948.5	99.0	139.0	-88.39	-3,767.0	-2,047.6	915.8	684.2	231.55	3.955	

Company: Bayswater Exploration & Production, LLC
Project: SEC.28-T7N-R64W
Reference Site: Mojack 28-C Pad (West) Sec.28-T7N-R64W
Site Error: 0.0ft
Reference Well: Mojack C-28HN
Well Error: 0.0ft
Reference Wellbore: Wellbore #1
Reference Design: Plan #1 (4-08-14)

Local Co-ordinate Reference: Well Mojack C-28HN
TVD Reference: WELL @ 4906.5ft (RKB - 22.5')
MD Reference: WELL @ 4906.5ft (RKB - 22.5')
North Reference: True
Survey Calculation Method: Minimum Curvature
Output errors are at 2.00 sigma
Database: Landmark
Offset TVD Reference: Offset Datum

Reference Depths are relative to WELL @ 4906.5ft (RKB - 22.5')

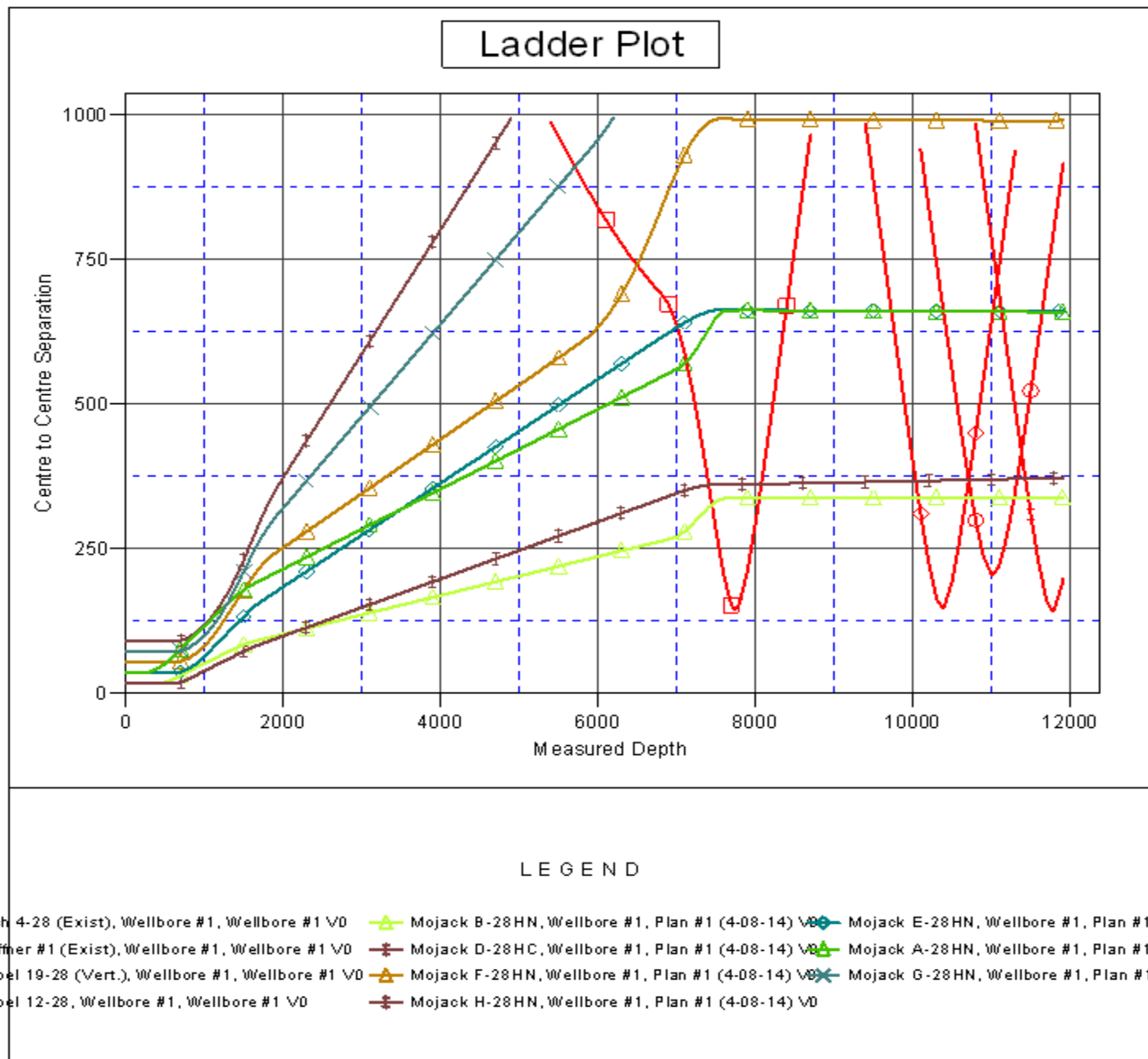
Offset Depths are relative to Offset Datum

Central Meridian is -105.500000 °

Coordinates are relative to: Mojack C-28HN

Coordinate System is US State Plane 1983, Colorado Northern Zone

Grid Convergence at Surface is: 0.61°



Company: Bayswater Exploration & Production, LLC
Project: SEC.28-T7N-R64W
Reference Site: Mojack 28-C Pad (West) Sec.28-T7N-R64W
Site Error: 0.0ft
Reference Well: Mojack C-28HN
Well Error: 0.0ft
Reference Wellbore: Wellbore #1
Reference Design: Plan #1 (4-08-14)

Local Co-ordinate Reference: Well Mojack C-28HN
TVD Reference: WELL @ 4906.5ft (RKB - 22.5')
MD Reference: WELL @ 4906.5ft (RKB - 22.5')
North Reference: True
Survey Calculation Method: Minimum Curvature
Output errors are at 2.00 sigma
Database: Landmark
Offset TVD Reference: Offset Datum

Reference Depths are relative to WELL @ 4906.5ft (RKB - 22.5')
 Offset Depths are relative to Offset Datum
 Central Meridian is -105.500000 °

Coordinates are relative to: Mojack C-28HN
 Coordinate System is US State Plane 1983, Colorado Northern Zone
 Grid Convergence at Surface is: 0.61°

