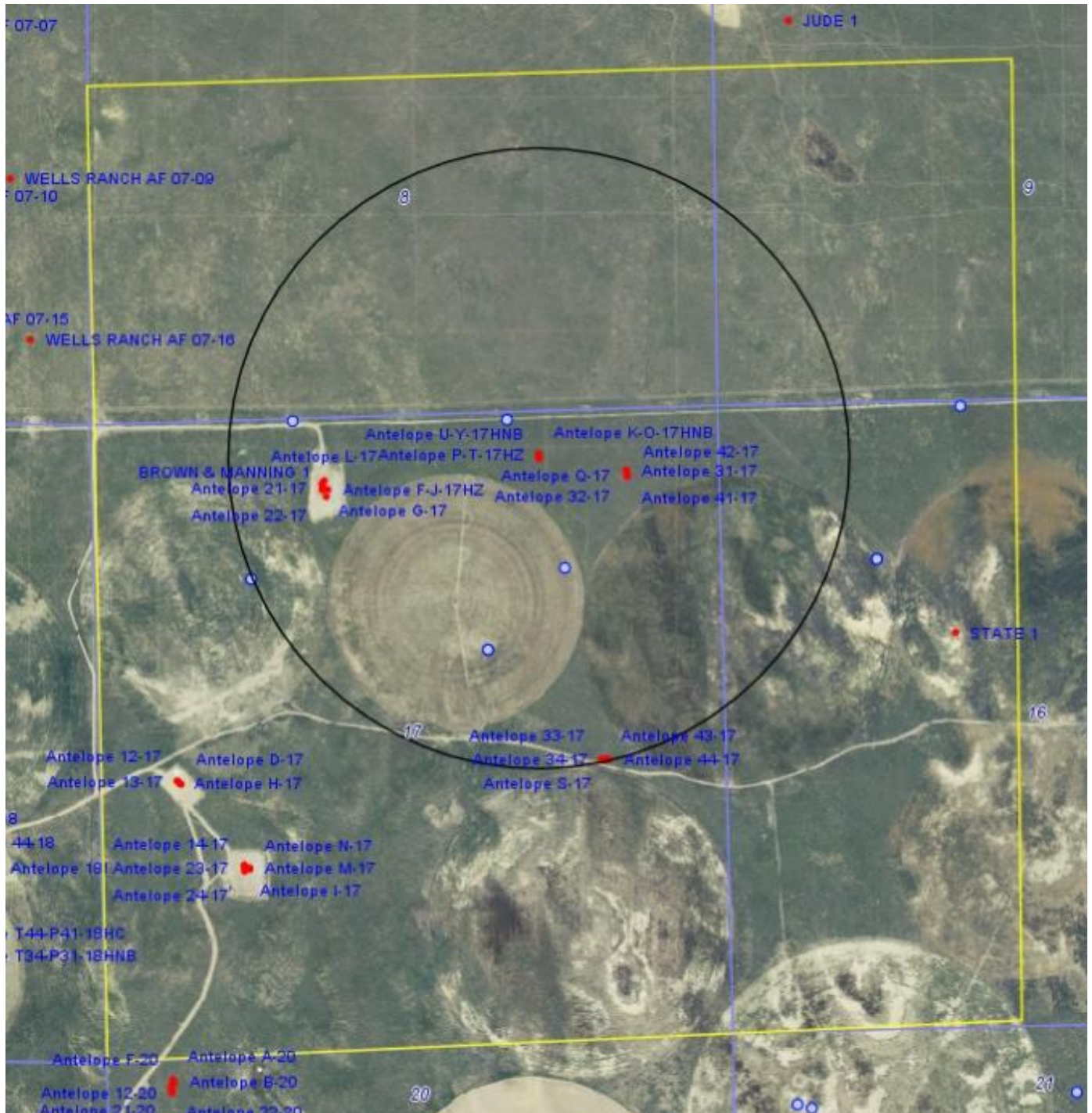


Antelope P-17 Pad DWR Wells

Antelope #U-Y-17HNB

Sec 17 T5N R62W

Bonanza Creek Energy Operating Company LLC



Antelope P-17 Pad DWR Well Status
Antelope #U-Y-17HNB
Sec 17 T5N R62W
Bonanza Creek Energy Operating Company LLC

WELL DESCRIPTION	LOCATION	WELL INFORMATION				Well Status
		Depth	Top Perf	Bottom Perf	Aquifer	
Receipt=0016003, Permit=0016003-MH- NATIONAL HOG FARMS	NW 16 5 N-62W	0	0	0	GW	Not equipped/representative (Monitoring well)
Receipt=0023004, Permit=0023004-MH- NATIONAL HOG FARM	NW 16 5 N-62W	35	0	0	GW	Plugged and abandoned
Receipt=0314638I, Permit=0040919-M- NATIONAL HOG FARMS INC	NENW 16 5 N-62W	25	5	25	GW	Plugged and abandoned
Receipt=0024454, Permit=0024454-MH- NATIONAL HOG FARMS	NE 17 5 N-62W	0	0	0	GW	Not equipped/representative (Monitoring well)
Receipt=0385493A, Permit=0188080-- NATIONAL HOG FARMS	NWNE 17 5 N-62W	45	20	30	GW	Not equipped/representative (Monitoring well)
Receipt=9064186, Permit=0040594-- ALLARD CATTLE CO	SWNE 17 5 N-62W	225	0	0	GW	Stock well - abandoned per 70 Ranch Mgr 3/19/12
Receipt=0048354A, Permit=1992016-AB- NATIONAL HOG FARMS	SWNE 17 5 N-62W	0	0	0	GW	Plugged and abandoned
Receipt=0016002, Permit=0016002-MH- NATIONAL HOG FARMS	NW 17 5 N-62W	0	0	0	GW	Not equipped/representative (Monitoring well)
Receipt=0314638L, Permit=0040922-M- NATIONAL HOG FARMS INC	NENW 17 5 N-62W	25	5	25	GW	Plugged and abandoned