

**ANADARKO PETROLEUM CORP - EBUS
DO NOT MAIL - PO BOX 4995
THE WOODLANDS, Texas**

Ferge 4C-14HZ

Majors 29

Post Job Summary **Cement Surface Casing**

Date Prepared: 1/30/2014
Version: 1

Service Supervisor: BIRCHELL, DEVIN

Submitted by: TRIER, DEREK

HALLIBURTON

HALLIBURTON

Wellbore Geometry

Job Tubulars					MD		Shoe Joint Length ft
Type	Description	Size in	ID in	Wt lbm/ft	Top ft	Bottom ft	
Casing	9 5/8" Surface Casing	9.63	8.921	36.00	0.00	1,251.00	45.00
Open Hole Section	13 1/2" Open Hole Section		13.500		0.00	1,251.00	0.00

HALLIBURTON

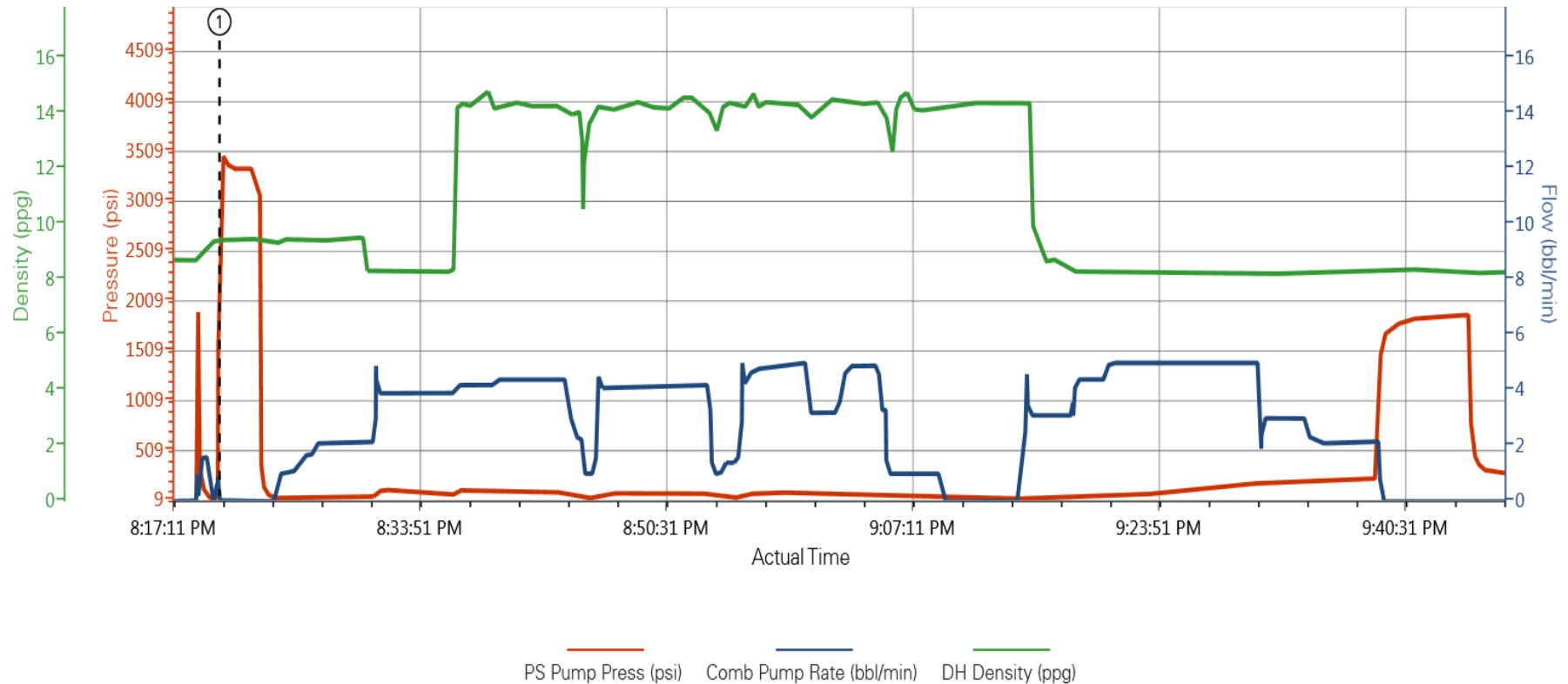
Pumping Schedule

Stage /Plug #	Fluid #	Fluid Type	Fluid Name	Surface Density lbm/gal	Avg Rate bbl/min	Surface Volume	Downhole Volume
1	1	Spacer	Fresh Water Spacer	8.33	2.00	10.0 bbl	10.0 bbl
1	2	Spacer	Mud Flush	8.40	2.00	12.0 bbl	12.0 bbl
1	1	Spacer	Fresh Water Spacer	8.33	4.00	10.0 bbl	10.0 bbl
1	3	Cement Slurry	SwiftCem B2	14.20	4.00	469.0 sack	469.0 sack

HALLIBURTON

Data Acquisition

Anadarko Ferge 4C-14HZ



① 3460;0;9.51

HALLIBURTON

Service Supervisor Reports

Job Log

Date/Time	Chart #	Activity Code	Pump Rate	Cum Vol	Pump	Pressure (psig)	Comments
01/23/2014 12:00		Call Out					Called out for Noble Energy No Worries PC G14-62-1HN Intermediate
01/23/2014 15:00		Pre-Convoy Safety Meeting					Discuss road and weather conditions, fatigue and following distance
01/23/2014 15:30		Depart from Service Center or Other Site					Call journey management, Depart for location
01/23/2014 16:00		Arrive At Loc					Close journey, talk with compan rep on valumes, rates, and depth, rig still running casing
01/23/2014 16:10		Pre-Rig Up Safety Meeting					Discussed rig up, line of fire, slips, and pinch points
01/23/2014 16:29		Rig-Up Equipment					Rig up ground line, and suction hoses
01/23/2014 18:30		Wait on Customer or Customer Sub-Contractor Equip					Wait for rig crew to finish running casing
01/23/2014 19:00		Casing on Bottom					Casing on bottom rig will circulate until HES is rigged up
01/23/2014 19:40		Pre-Job Safety Meeting					Discuss pump schedule, procedure, high pressure iron, and emergency plan
01/23/2014 20:00		Other					Stop circulating rig crew blew out top drive, rigged up cement head and tied into stand pipe
01/23/2014 20:18		Other					filled lines to pressure test pump and lines
01/23/2014 20:20		Pressure Test					Pressure test pump and lines to 3160 psi held for 2 minutes
01/23/2014 20:24		Pump Spacer	2	10		50.0	Pump 10 bbls Fresh Water Spacer
01/23/2014 20:29		Pump Spacer 1	2	12		46.0	Pump 12 bbls Mud Flush III Spacer
01/23/2014 20:33		Pump Spacer 2	4	10		80.0	Pump 10 bbls Fresh Water Spacer
01/23/2014 20:36		Pump Lead Cement	4	128		109.0	Pump cement at 14.2 ppg Y: 1.54ft^3/sk W: 7.66gal/sk (469sks)
01/23/2014 21:11		Shutdown					Shutdown to drop top plug
01/23/2014 21:12		Drop Top Plug					Dropped top plug, washed pump and lines on plug
01/23/2014 21:15		Pump Displacement - Start	3			54.0	Pump displacement 92.6 bbls water
01/23/2014 21:20		Returns To Surface	5	20		66.0	Returns seen at surface with 20 bbls displacement away
01/23/2014 21:26		Displ Reached Cmmt	5	45		85.0	displacement reached cement with 45 bbls away
01/23/2014 21:26		Spacer Returns to Surface	5	51		111.0	With 51 bbls displacement away spacer returns to surface (32 bbls)
01/23/2014 21:33		Cement Returns to Surface	3	83		200.0	With 83 bbls displacement away cement returns to surface (9 bbls)
01/23/2014 21:39		Bump Plug	2	92		229.0	Bumped plug with 92 bbls with 229 psi took pressure to 1702 psi
01/23/2014 21:40		Pressure Up				1860.0	Pressure up casing from 229 to 1860 psi and hold for 5 minutes
01/23/2014 21:44		Check Floats					Checked floats, floats held with 1 bbls back to truck
01/23/2014 21:44		Release Casing Pressure					Released pressure ready for rig down
01/23/2014 21:50		Pre-Rig Down Safety Meeting					Discussed trapped pressure, slips, trips, falls, and overhead loads
01/23/2014 21:55		Rig-Down Equipment					Begin rigging down all iron and suction hoses
01/23/2014 22:45		Pre-Convoy Safety Meeting					Discussed fatigue, wildlife, weather, and journey management
01/23/2014 22:55		Depart Location for Service Center or Other Site					Depart for Halliburton Service Center

The Road to Excellence Starts with Safety

Sold To #: 300466	Ship To #: 3117118	Quote #:	Sales Order #: 901055106
Customer: ANADARKO PETROLEUM CORP - EBUS		Customer Rep: Balkenbush, Bob	
Well Name: Ferge		Well #: 4C-14HZ	API/UWI #:
Field: WATTENBERG	City (SAP): PLATTEVILLE	County/Parish: Weld	State: Colorado
Contractor: Majors		Rig/Platform Name/Num: Majors 29	
Job Purpose: Cement Surface Casing			
Well Type: Development Well		Job Type: Cement Surface Casing	
Sales Person: GREGORY, JON		Srvc Supervisor: BIRCHELL, DEVIN	MBU ID Emp #: 466993

Job Personnel

HES Emp Name	Exp Hrs	Emp #	HES Emp Name	Exp Hrs	Emp #	HES Emp Name	Exp Hrs	Emp #
ALVAREZ, BRANDON Paul	0.0	555850	BIRCHELL, DEVIN Ray	0.0	466993	LEONE, BRIAN C	0.0	561735
MILLER, GEOFFREY Alan	0.0	460232	VIATOR, JASON R.	0.0	550394			

Equipment

HES Unit #	Distance-1 way	HES Unit #	Distance-1 way	HES Unit #	Distance-1 way	HES Unit #	Distance-1 way
10679720C	15 mile	11036295C	15 mile	11338223	15 mile	11341988C	15 mile
12010171	15 mile						

Job

Job Times

Formation Name						Date	Time	Time Zone		
Formation Depth (MD)		Top		Bottom		Called Out	23 - Jan - 2014	12:00	MST	
Form Type			BHST			On Location	23 - Jan - 2014	16:00	MST	
Job depth MD		1251. ft		Job Depth TVD		1251. ft	Job Started	23 - Jan - 2014	20:20	MST
Water Depth				Wk Ht Above Floor		5. ft	Job Completed	23 - Jan - 2014	21:44	MST
Perforation Depth (MD)		From		To		Departed Loc	23 - Jan - 2014	22:50	MST	

Well Data

Description	New / Used	Max pressure psig	Size in	ID in	Weight lbm/ft	Thread	Grade	Top MD ft	Bottom MD ft	Top TVD ft	Bottom TVD ft
13 1/2" Open Hole Section				13.5				.	1251.		
9 5/8" Surface Casing	Unknown		9.625	8.921	36.		J-55	.	1251.		

Fluid Data

Stage/Plug #: 1

Fluid #	Stage Type	Fluid Name	Qty	Qty uom	Mixing Density lbm/gal	Yield ft ³ /sk	Mix Fluid Gal/sk	Rate bbl/min	Total Mix Fluid Gal/sk
---------	------------	------------	-----	---------	------------------------	---------------------------	------------------	--------------	------------------------

1	Fresh Water Spacer		10.0	bbl	8.33			2.0	
2	Mud Flush		12.0	bbl	8.4			2.0	
3.5 lbm/bbl		MUD FLUSH III, 40 LB SACK (101633304)							
42 gal/bbl		MUD FLUSH III - SBM (528788)							
1	Fresh Water Spacer		10.0	bbl	8.33			4.0	
3	SwiftCem B2	SWIFTCEM (TM) SYSTEM (452990)	469.0	sacks	14.2	1.54	7.66	4.0	7.66
7.66 Gal		FRESH WATER							
Calculated Values		Pressures		Volumes					
Displacement	92.0	Shut In: Instant		Lost Returns		Cement Slurry		Pad	
Top Of Cement		5 Min		Cement Returns	9.0	Actual Displacement	92.0	Treatment	
Frac Gradient		15 Min		Spacers	32.0	Load and Breakdown		Total Job	
Rates									
Circulating		Mixing		Displacement		Avg. Job			
Cement Left In Pipe	Amount	45 ft	Reason	Shoe Joint					
Frac Ring # 1 @	ID	Frac ring # 2 @	ID	Frac Ring # 3 @	ID	Frac Ring # 4 @	ID		
The Information Stated Herein Is Correct				Customer Representative Signature					

