

**ANADARKO PETROLEUM CORP - EBUS
DO NOT MAIL - PO BOX 4995
THE WOODLANDS, Texas**

AGGREGATE STATE 35N-E16HZ

Majors 42

Post Job Summary **Cement Surface Casing**

Date Prepared: 5/29/2014
Version: 1

Service Supervisor: VIGIL, NICHOLAS

Submitted by: PRUDHOMME, JOSHUA

HALLIBURTON

HALLIBURTON

Wellbore Geometry

Job Tubulars					MD		Shoe Joint Length ft
Type	Description	Size in	ID in	Wt lbm/ft	Top ft	Bottom ft	
Casing	9 5/8" Surface Casing	9.63	8.921	36.00	0.00	1,022.00	44.00
Open Hole Section	13 1/2" Open Hole Section		13.500		0.00	1,032.00	0.00

HALLIBURTON

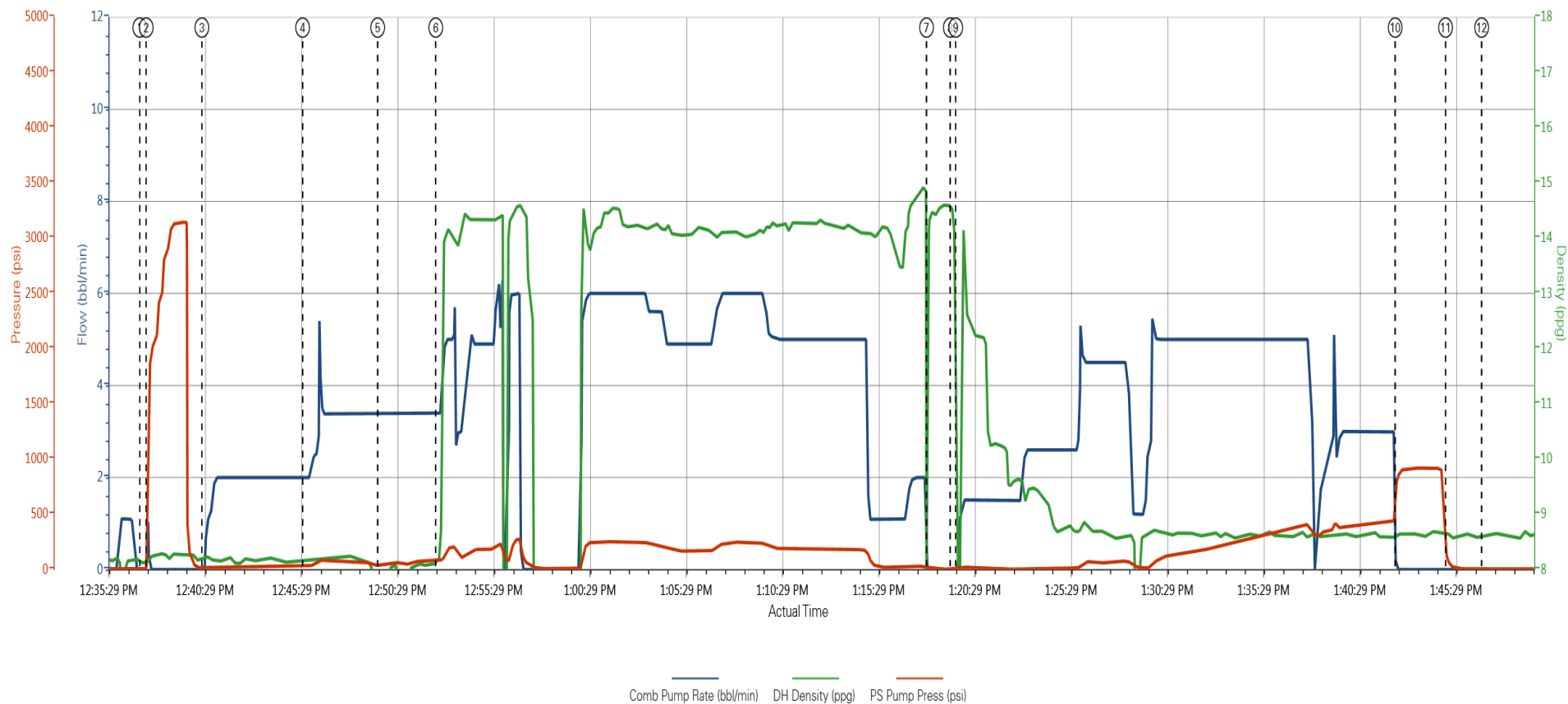
Pumping Schedule

Stage /Plug #	Fluid #	Fluid Type	Fluid Name	Surface Density lbm/gal	Avg Rate bbl/min	Surface Volume	Downhole Volume
1	1	Spacer	Fresh Water Spacer	8.33	2.0	10.0 bbl	10.0 bbl
1	2	Spacer	Mud Flush	8.40	3.5	12.0 bbl	12.0 bbl
1	1	Spacer	Fresh Water Spacer	8.33	3.5	10.0 bbl	10.0 bbl
1	3	Cement Slurry	SwiftCem B2	14.20	5.0	386.0 sacks	386.0 sacks

HALLIBURTON

Data Acquisition

Anadarko Aggregate State 35N-E16HZ



① Start Job ② Test Lines ③ Water Spacer ④ Mud Flush ⑤ Water Spacer ⑥ 14.2 ppg SwiftCem ⑦ Shutdown ⑧ DropTop Plug ⑨ Pump Displacement ⑩ Bump Plug ⑪ Check Floats ⑫ End Job

▼ HALLIBURTON | iCem® Service

Created: 2014-02-03 11:26:44, Version: 3.0.121

Edit

Customer: ANADARKO PETROLEUM CORP -
EBUS

Job Date: 2/3/2014 11:40:14 AM

Well: Aggregate State 35N-E16HZ

Representative: Nicholas Vigil

Sales Order #: 901090731

Job Type: 9 5/8 Surface

Service Supervisor Reports

Job Log

Date/Time	Chart #	Activity Code	Pump Rate	Cum Vol	Pump		Pressure (psig)	Comments
02/03/2014 11:05		Arrive At Loc						On location time was 1100, Rig had been on bottom circulating for about 30 minutes
02/03/2014 11:10		Assessment Of Location Safety Meeting						Hazard hunt, Rig up safety meeting, Water test
02/03/2014 11:15		Rig-Up Equipment						
02/03/2014 12:00		Rig-Up Completed						
02/03/2014 12:10		Pre-Job Safety Meeting						Held safety meeting with all personnel on location
02/03/2014 12:37		Start Job						
02/03/2014 12:37		Test Lines						Pressure tested lines to 3000 psi
02/03/2014 12:40		Pump Spacer 1	2	10			34.0	Water Spacer
02/03/2014 12:45		Pump Spacer 2	3.5	12			70.0	Mud Flush
02/03/2014 12:49		Pump Spacer 1	3.5	10			72.0	Water Spacer
02/03/2014 12:52		Pump Cement	6	105.8			240.0	14.2 ppg SwiftCem (386 sks), weight was verified by scale
02/03/2014 13:18		Shutdown						
02/03/2014 13:19		Drop Top Plug						Plug was pre-loaded
02/03/2014 13:19		Pump Displacement	5	40			230.0	Displaced using fresh water
02/03/2014 13:42		Bump Plug	3	76			450.0	Bumped plug 500 psi over final lift bringing our pressure up to 950 psi
02/03/2014 13:43		Comment						We got 13 bbl of cement to surface
02/03/2014 13:45		Check Floats						Floats held
02/03/2014 13:46		End Job						Rig down safety meeting
02/03/2014 13:55		Rig-Down Equipment						
02/03/2014 15:00		Rig-Down Completed						

The Road to Excellence Starts with Safety

Sold To #: 300466	Ship To #: 3275795	Quote #:	Sales Order #: 901090731
Customer: ANADARKO PETROLEUM CORP - EBUS		Customer Rep: Porter, Bob	
Well Name: AGGREGATE STATE		Well #: 35N-E16HZ	API/UWI #: 05-123-38680
Field: WATTENBERG	City (SAP): IONE	County/Parish: Weld	State: Colorado
Contractor: Majors		Rig/Platform Name/Num: Majors 42	
Job Purpose: Cement Surface Casing			
Well Type: Development Well		Job Type: Cement Surface Casing	
Sales Person: GREGORY, JON		Srvc Supervisor: VIGIL, NICHOLAS	MBU ID Emp #: 443481

Job Personnel

HES Emp Name	Exp Hrs	Emp #	HES Emp Name	Exp Hrs	Emp #	HES Emp Name	Exp Hrs	Emp #
ACEVEDO, ROBERTO Carlos	0.0	551312	ROMERO, JOSEPH M	0.0	512137	VIGIL, NICHOLAS Joseph	0.0	443481

Equipment

HES Unit #	Distance-1 way	HES Unit #	Distance-1 way	HES Unit #	Distance-1 way	HES Unit #	Distance-1 way
11542778	12 mile	11566182	12 mile	11645065	12 mile		

Job

Job Times

Formation Name				Date	Time	Time Zone
Formation Depth (MD)	Top	Bottom		Called Out	03 - Feb - 2014	07:00 MST
Form Type	BHST			On Location	03 - Feb - 2014	11:05 MST
Job depth MD	1032. ft	Job Depth TVD	1032. ft	Job Started	03 - Feb - 2014	12:37 MST
Water Depth	Wk Ht Above Floor			Job Completed	03 - Feb - 2014	13:46 MST
Perforation Depth (MD)	From	To		Departed Loc	03 - Feb - 2014	15:00 MST

Well Data

Description	New / Used	Max pressure psig	Size in	ID in	Weight lbm/ft	Thread	Grade	Top MD ft	Bottom MD ft	Top TVD ft	Bottom TVD ft
13 1/2" Open Hole Section				13.5				.	1032.		
9 5/8" Surface Casing	Unknown		9.625	8.921	36.		J-55	.	1022.		

Sales/Rental/3rd Party (HES)

Description	Qty	Qty uom	Depth	Supplier
CMT CASING EQUIPMENT BOM	1	JOB		
MILEAGE FOR CEMENTING CREW,ZI	20	MI		
ZI FUEL SURCHG-CARS/PICKUPS<1 1/2TON	20	MI		
KIT,HALL WELD-A	1	EA		
CNTRLZR, 9 5/8"x13 3/4',#500-0963-1375	9	EA		
BASKET - CEMENT - 9-5/8 CSG X 12-1/4	1	EA		
PLUG,CMTG,TOP,9 5/8,HWE,8.16 MIN/9.06 MA	1	EA		
Description	Qty	Qty uom	Depth	Supplier
COLLAR-STOP-9 5/8"-FRICTION-HINGED	2	EA		

Fluid Data

Stage/Plug #: 1

Fluid #	Stage Type	Fluid Name	Qty	Qty uom	Mixing Density lbm/gal	Yield ft ³ /sk	Mix Fluid Gal/sk	Rate bbl/min	Total Mix Fluid Gal/sk
1	Fresh Water Spacer		10.00	bbl	8.33			2.0	
2	Mud Flush		12.00	bbl	8.4			3.5	
1	Fresh Water Spacer		10.00	bbl	8.33			3.5	
3	SwiftCem B2	SWIFTCM (TM) SYSTEM (452990)	386.0	sacks	14.2	1.54	7.66	5.0	7.66
7.66 Gal		FRESH WATER							
Calculated Values		Pressures		Volumes					
Displacement		Shut In: Instant		Lost Returns		Cement Slurry		Pad	
Top Of Cement		5 Min		Cement Returns 13.0		Actual Displacement 76.0		Treatment	
Frac Gradient		15 Min		Spacers 32.0		Load and Breakdown		Total Job	
Rates									
Circulating		Mixing		Displacement		Avg. Job			
Cement Left In Pipe		Amount	44 ft	Reason	Shoe Joint				
Frac Ring # 1 @	ID	Frac ring # 2 @	ID	Frac Ring # 3 @	ID	Frac Ring # 4 @	ID		
The Information Stated Herein Is Correct				Customer Representative Signature					

