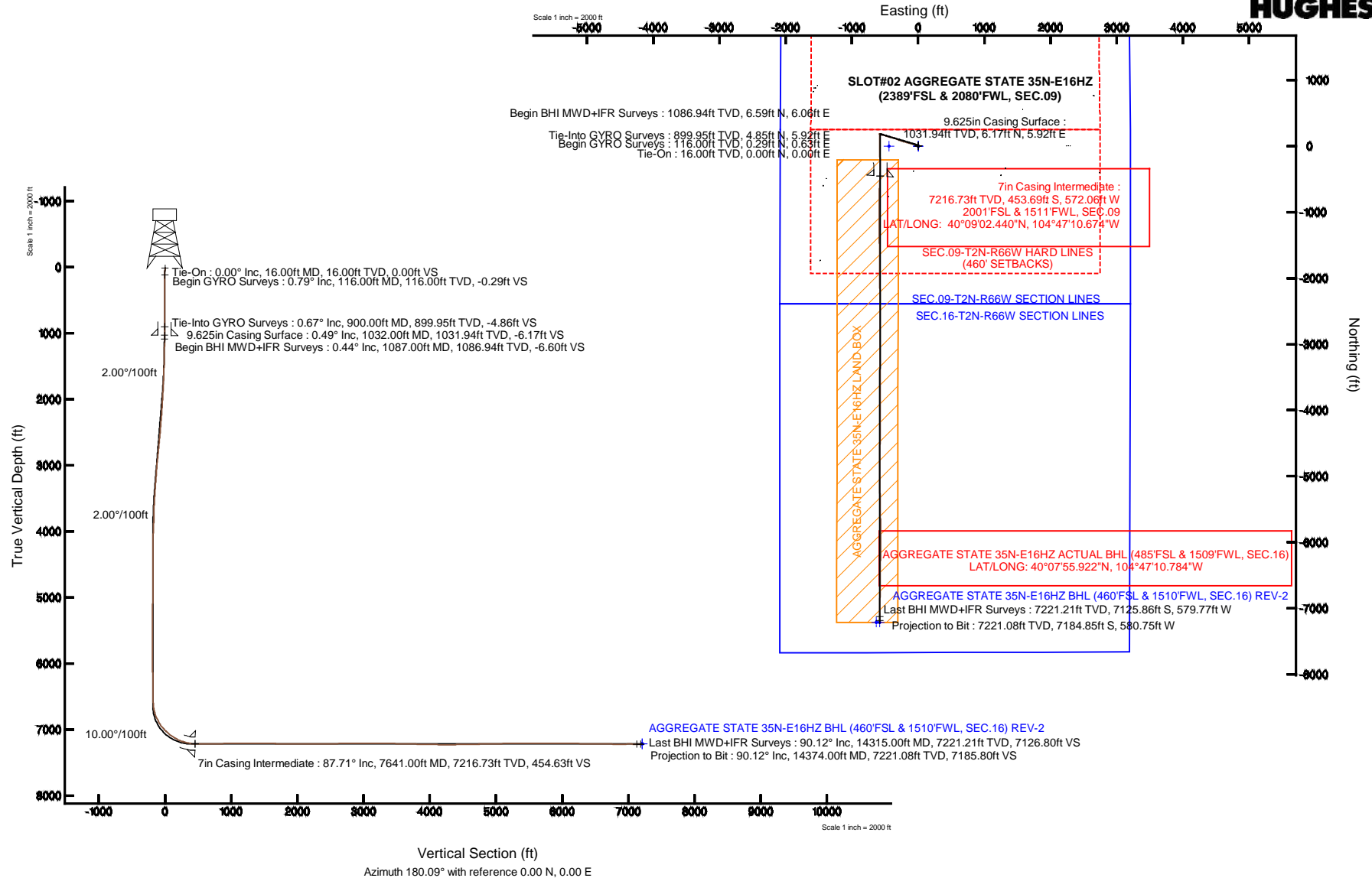


Location:	COLORADO	Slot:	SLOT#02 AGGREGATE STATE 35N-E16HZ (2389'FSL & 2080'FWL, SEC.09)
Field:	WELD COUNTY (KERR MCGEE)	Well:	AGGREGATE STATE 35N-E16HZ
Facility:	SEC.09-T2N-R66W	Wellbore:	AGGREGATE STATE 35N-E16HZ PWB

Plot reference wellpath is AGGREGATE STATE 35N-E16HZ (REV-A.0) PWP

True vertical depths are referenced to XTREME 20 (16KB) (RKB)	Grid System: NAD83 / Lambert Colorado SP, North Zone (501), US feet
Measured depths are referenced to XTREME 20 (16KB) (RKB)	North Reference: True north
XTREME 20 (16KB) (RKB) to Mean Sea Level: 4927 feet	Scale: True distance
Mean Sea Level to Mud line (4 Slot: SLOTH02 AGGREGATE STATE 35AN-E16H2 (2308)FSL & 2080FWL, SEC.09): 0 feet	Depths are in feet
Coordinates are in feet referenced to Slot	Created by precan on 20/May/2014



REFERENCE WELLPATH IDENTIFICATION			
Operator	KERR-MCGEE OIL & GAS ONSHORE LP	Slot	SLOT#02 AGGREGATE STATE 35N-E16HZ (2389'FSL & 2080'FWL, SEC.09)
Area	COLORADO	Well	AGGREGATE STATE 35N-E16HZ
Field	WELD COUNTY (KERR MCGEE)	Wellbore	AGGREGATE STATE 35N-E16HZ AWB
Facility	SEC.09-T2N-R66W		

REPORT SETUP INFORMATION			
Projection System	NAD83 / Lambert Colorado SP, Northern Zone (501), US feet	Software System	WellArchitect® 4.0.0
North Reference	True	User	Precaín
Scale	0.999958	Report Generated	20/May/2014 at 12:24
Convergence at slot	n/a	Database/Source file	WellArchitectDB/AGGREGATE_STATE_35N-E16HZ_AWB.xml

WELLPATH LOCATION						
	Local coordinates		Grid coordinates		Geographic coordinates	
	North[ft]	East[ft]	Easting[US ft]	Northing[US ft]	Latitude	Longitude
Slot Location	-771.05	-2642.23	3200070.50	1298996.35	40°09'06.923"N	104°47'03.307"W
Facility Reference Pt			3202706.22	1299788.95	40°09'14.544"N	104°46'29.280"W
Field Reference Pt			3197771.84	1268891.29	40°04'09.600"N	104°47'36.000"W

WELLPATH DATUM			
Calculation method	Minimum curvature	XTREME 20 (16'KB) (RKB) to Facility Vertical Datum	4927.00ft
Horizontal Reference Pt	Slot	XTREME 20 (16'KB) (RKB) to Mean Sea Level	4927.00ft
Vertical Reference Pt	XTREME 20 (16'KB) (RKB)	XTREME 20 (16'KB) (RKB) to Mud Line at Slot (SLOT#02 AGGREGATE STATE 35N-E16HZ (2389'FSL & 2080'FWL, SEC.09))	4927.00ft
MD Reference Pt	XTREME 20 (16'KB) (RKB)	Section Origin	N 0.00, E 0.00 ft
Field Vertical Reference	Mean Sea Level	Section Azimuth	180.09°

REFERENCE WELLPATH IDENTIFICATION			
Operator	KERR-MCGEE OIL & GAS ONSHORE LP	Slot	SLOT#02 AGGREGATE STATE 35N-E16HZ (2389'FSL & 2080'FWL, SEC.09)
Area	COLORADO	Well	AGGREGATE STATE 35N-E16HZ
Field	WELD COUNTY (KERR MCGEE)	Wellbore	AGGREGATE STATE 35N-E16HZ AWP
Facility	SEC.09-T2N-R66W		

WELLPATH DATA (163 stations) † = interpolated/extrapolated station										
MD [ft]	Inclination [°]	Azimuth [°]	TVD [ft]	Vert Sect [ft]	North [ft]	East [ft]	Latitude	Longitude	DLS [°/100ft]	Comments
0.00†	0.000	65.240	0.00	0.00	0.00	0.00	40°09'06.923"N	104°47'03.307"W	0.00	
16.00	0.000	65.240	16.00	0.00	0.00	0.00	40°09'06.923"N	104°47'03.307"W	0.00	Tie-On
116.00	0.790	65.240	116.00	-0.29	0.29	0.63	40°09'06.926"N	104°47'03.299"W	0.79	Begin GYRO Surveys
216.00	0.370	315.840	215.99	-0.81	0.81	1.03	40°09'06.931"N	104°47'03.294"W	0.98	
316.00	0.920	48.030	315.99	-1.58	1.58	1.40	40°09'06.939"N	104°47'03.289"W	1.00	
416.00	0.100	276.030	415.98	-2.13	2.12	1.91	40°09'06.944"N	104°47'03.283"W	0.99	
516.00	0.340	117.990	515.98	-2.00	1.99	2.08	40°09'06.943"N	104°47'03.280"W	0.43	
616.00	0.970	70.490	615.98	-2.14	2.14	3.14	40°09'06.944"N	104°47'03.267"W	0.78	
716.00	0.860	68.850	715.96	-2.70	2.69	4.64	40°09'06.950"N	104°47'03.247"W	0.11	
816.00	0.960	24.660	815.95	-3.73	3.72	5.69	40°09'06.960"N	104°47'03.234"W	0.69	
900.00	0.670	352.080	899.95	-4.86	4.85	5.92	40°09'06.971"N	104°47'03.231"W	0.64	Tie-Into GYRO Surveys
1087.00	0.440	23.810	1086.94	-6.60	6.59	6.06	40°09'06.988"N	104°47'03.229"W	0.20	Begin BHI MWD+IFR Surveys
1181.00	0.350	346.430	1180.93	-7.21	7.20	6.13	40°09'06.994"N	104°47'03.228"W	0.28	
1275.00	1.920	292.860	1274.91	-8.10	8.09	4.62	40°09'07.003"N	104°47'03.248"W	1.85	
1369.00	3.870	294.460	1368.79	-10.01	10.01	0.28	40°09'07.022"N	104°47'03.304"W	2.08	
1462.00	5.370	289.530	1461.49	-12.76	12.77	-6.68	40°09'07.049"N	104°47'03.393"W	1.67	
1557.00	6.930	284.210	1555.94	-15.63	15.66	-16.43	40°09'07.078"N	104°47'03.519"W	1.75	
1649.00	8.700	285.870	1647.08	-18.88	18.93	-28.50	40°09'07.110"N	104°47'03.674"W	1.94	
1740.00	9.750	286.260	1736.90	-22.90	22.97	-42.52	40°09'07.150"N	104°47'03.855"W	1.16	
1832.00	10.610	284.620	1827.45	-27.19	27.29	-58.19	40°09'07.193"N	104°47'04.057"W	0.99	
1924.00	12.050	284.170	1917.66	-31.65	31.77	-75.70	40°09'07.237"N	104°47'04.282"W	1.57	
2016.00	13.580	284.090	2007.36	-36.60	36.76	-95.49	40°09'07.286"N	104°47'04.537"W	1.66	
2107.00	15.090	283.580	2095.53	-41.95	42.14	-117.37	40°09'07.339"N	104°47'04.819"W	1.67	
2199.00	16.010	284.010	2184.16	-47.79	48.02	-141.32	40°09'07.398"N	104°47'05.127"W	1.01	
2290.00	16.780	285.880	2271.46	-54.38	54.65	-166.13	40°09'07.463"N	104°47'05.447"W	1.03	
2382.00	16.280	284.720	2359.66	-61.25	61.56	-191.37	40°09'07.531"N	104°47'05.772"W	0.65	
2473.00	16.870	287.550	2446.87	-68.43	68.79	-216.30	40°09'07.603"N	104°47'06.093"W	1.10	
2565.00	15.470	286.560	2535.23	-75.91	76.31	-240.79	40°09'07.677"N	104°47'06.408"W	1.55	
2657.00	16.610	290.930	2623.65	-84.07	84.50	-264.83	40°09'07.758"N	104°47'06.718"W	1.80	
2749.00	15.080	290.300	2712.16	-92.88	93.35	-288.34	40°09'07.846"N	104°47'07.021"W	1.67	
2841.00	16.590	289.170	2800.66	-101.31	101.82	-311.97	40°09'07.929"N	104°47'07.325"W	1.68	
2933.00	17.610	291.000	2888.59	-110.57	111.12	-337.37	40°09'08.021"N	104°47'07.652"W	1.25	
3025.00	18.000	285.120	2976.19	-119.22	119.82	-364.09	40°09'08.107"N	104°47'07.996"W	2.00	
3117.00	17.130	284.800	3063.90	-126.34	126.98	-390.91	40°09'08.178"N	104°47'08.341"W	0.95	
3208.00	15.560	283.900	3151.22	-132.66	133.34	-415.72	40°09'08.241"N	104°47'08.661"W	1.75	
3300.00	14.870	287.620	3240.00	-139.16	139.88	-438.95	40°09'08.305"N	104°47'08.960"W	1.30	
3392.00	13.370	287.670	3329.22	-145.93	146.68	-460.34	40°09'08.372"N	104°47'09.236"W	1.63	
3483.00	11.200	288.930	3418.13	-151.96	152.74	-478.72	40°09'08.432"N	104°47'09.472"W	2.40	
3575.00	10.760	290.740	3508.45	-157.87	158.68	-495.21	40°09'08.491"N	104°47'09.685"W	0.61	
3666.00	9.700	284.470	3598.00	-162.77	163.61	-510.57	40°09'08.540"N	104°47'09.883"W	1.69	
3758.00	8.180	280.330	3688.88	-165.86	166.72	-524.52	40°09'08.570"N	104°47'10.062"W	1.79	
3848.00	6.710	276.070	3778.12	-167.54	168.42	-536.05	40°09'08.587"N	104°47'10.211"W	1.74	
3940.00	6.230	287.950	3869.54	-169.63	170.53	-546.14	40°09'08.608"N	104°47'10.341"W	1.54	
4032.00	5.490	306.270	3961.07	-173.76	174.67	-554.44	40°09'08.649"N	104°47'10.447"W	2.17	
4123.00	4.780	301.920	4051.70	-178.33	179.25	-561.17	40°09'08.694"N	104°47'10.534"W	0.89	

REFERENCE WELLPATH IDENTIFICATION			
Operator	KERR-MCGEE OIL & GAS ONSHORE LP	Slot	SLOT#02 AGGREGATE STATE 35N-E16HZ (2389'FSL & 2080'FWL, SEC.09)
Area	COLORADO	Well	AGGREGATE STATE 35N-E16HZ
Field	WELD COUNTY (KERR MCGEE)	Wellbore	AGGREGATE STATE 35N-E16HZ AWB
Facility	SEC.09-T2N-R66W		

WELLPATH DATA (163 stations) † = interpolated/extrapolated station										
MD [ft]	Inclination [°]	Azimuth [°]	TVD [ft]	Vert Sect [ft]	North [ft]	East [ft]	Latitude	Longitude	DLS [°/100ft]	Comments
4215.00	3.310	310.320	4143.47	-182.07	183.00	-566.45	40°09'08.731"N	104°47'10.602"W	1.72	
4300.00	1.190	310.230	4228.40	-184.22	185.15	-568.99	40°09'08.753"N	104°47'10.635"W	2.49	
4385.00	0.930	235.810	4313.39	-184.40	185.34	-570.24	40°09'08.754"N	104°47'10.651"W	1.53	
4469.00	1.380	232.340	4397.37	-183.40	184.34	-571.60	40°09'08.745"N	104°47'10.668"W	0.54	
4555.00	0.370	249.250	4483.36	-182.66	183.60	-572.68	40°09'08.737"N	104°47'10.682"W	1.20	
4725.00	0.340	284.300	4653.36	-182.59	183.53	-573.68	40°09'08.737"N	104°47'10.695"W	0.13	
4895.00	0.650	281.050	4823.35	-182.90	183.84	-575.12	40°09'08.740"N	104°47'10.714"W	0.18	
5065.00	0.870	304.890	4993.33	-183.82	184.77	-577.12	40°09'08.749"N	104°47'10.740"W	0.22	
5235.00	1.080	323.770	5163.31	-185.85	186.80	-579.13	40°09'08.769"N	104°47'10.765"W	0.22	
5406.00	0.280	158.890	5334.30	-186.76	187.71	-579.93	40°09'08.778"N	104°47'10.776"W	0.79	
5576.00	0.280	289.750	5504.30	-186.51	187.46	-580.17	40°09'08.775"N	104°47'10.779"W	0.30	
5747.00	0.450	27.740	5675.30	-187.24	188.20	-580.25	40°09'08.783"N	104°47'10.780"W	0.33	
5917.00	0.280	193.260	5845.30	-187.43	188.38	-580.04	40°09'08.785"N	104°47'10.777"W	0.43	
6087.00	0.670	155.570	6015.29	-186.12	187.07	-579.72	40°09'08.772"N	104°47'10.773"W	0.28	
6258.00	1.050	122.090	6186.27	-184.38	185.33	-577.98	40°09'08.754"N	104°47'10.751"W	0.36	
6428.00	1.720	117.580	6356.22	-182.38	183.32	-574.40	40°09'08.735"N	104°47'10.704"W	0.40	
6597.00	1.280	196.930	6525.18	-179.40	180.34	-572.70	40°09'08.705"N	104°47'10.683"W	1.15	
6640.00	1.610	208.720	6568.17	-178.41	179.35	-573.13	40°09'08.695"N	104°47'10.688"W	1.03	
6683.00	3.640	200.240	6611.12	-176.60	177.54	-573.89	40°09'08.677"N	104°47'10.698"W	4.79	
6726.00	7.690	190.570	6653.90	-172.49	173.43	-574.89	40°09'08.637"N	104°47'10.711"W	9.64	
6768.00	11.490	189.170	6695.31	-165.59	166.54	-576.08	40°09'08.569"N	104°47'10.726"W	9.06	
6811.00	15.740	188.790	6737.09	-155.59	156.54	-577.65	40°09'08.470"N	104°47'10.746"W	9.89	
6853.00	19.390	187.740	6777.12	-143.05	144.00	-579.46	40°09'08.346"N	104°47'10.770"W	8.72	
6896.00	23.290	185.050	6817.17	-127.50	128.45	-581.17	40°09'08.192"N	104°47'10.792"W	9.35	
6938.00	26.710	181.560	6855.23	-109.78	110.74	-582.16	40°09'08.017"N	104°47'10.804"W	8.86	
6981.00	30.120	179.980	6893.04	-89.33	90.28	-582.42	40°09'07.815"N	104°47'10.808"W	8.12	
7023.00	33.900	179.480	6928.65	-67.07	68.02	-582.31	40°09'07.595"N	104°47'10.806"W	9.02	
7066.00	38.830	179.390	6963.27	-41.58	42.54	-582.06	40°09'07.343"N	104°47'10.803"W	11.47	
7108.00	43.300	179.020	6994.93	-14.00	14.96	-581.67	40°09'07.071"N	104°47'10.798"W	10.66	
7151.00	45.210	178.630	7025.72	16.00	-15.04	-581.05	40°09'06.774"N	104°47'10.790"W	4.49	
7193.00	49.510	178.290	7054.17	46.87	-45.92	-580.22	40°09'06.469"N	104°47'10.779"W	10.26	
7236.00	51.990	177.600	7081.37	80.14	-79.19	-579.02	40°09'06.140"N	104°47'10.764"W	5.90	
7278.00	56.210	178.470	7105.99	114.14	-113.19	-577.86	40°09'05.804"N	104°47'10.749"W	10.19	
7321.00	59.270	177.800	7128.94	150.47	-149.53	-576.67	40°09'05.445"N	104°47'10.734"W	7.24	
7363.00	64.190	177.500	7148.83	187.42	-186.47	-575.16	40°09'05.080"N	104°47'10.714"W	11.73	
7406.00	67.640	177.130	7166.37	226.62	-225.68	-573.32	40°09'04.693"N	104°47'10.690"W	8.06	
7449.00	70.390	179.570	7181.77	266.74	-265.81	-572.17	40°09'04.296"N	104°47'10.676"W	8.30	
7492.00	74.210	178.130	7194.85	307.69	-306.75	-571.34	40°09'03.892"N	104°47'10.665"W	9.44	
7533.00	78.080	179.030	7204.66	347.48	-346.54	-570.36	40°09'03.498"N	104°47'10.652"W	9.68	
7576.00	82.860	180.210	7211.78	389.87	-388.93	-570.08	40°09'03.079"N	104°47'10.649"W	11.44	
7604.00	85.650	181.680	7214.58	417.72	-416.78	-570.54	40°09'02.804"N	104°47'10.655"W	11.25	
7641.00†	87.708	183.042	7216.73	454.63	-453.69	-572.06	40°09'02.440"N	104°47'10.674"W	6.67	7" Casing Point
7666.00	89.100	183.960	7217.42	479.57	-478.63	-573.59	40°09'02.193"N	104°47'10.694"W	6.67	
7757.00	89.560	183.340	7218.49	570.39	-569.44	-579.38	40°09'01.296"N	104°47'10.768"W	0.85	
7849.00	90.610	182.610	7218.35	662.27	-661.31	-584.15	40°09'00.388"N	104°47'10.830"W	1.39	

REFERENCE WELLPATH IDENTIFICATION			
Operator	KERR-MCGEE OIL & GAS ONSHORE LP	Slot	SLOT#02 AGGREGATE STATE 35N-E16HZ (2389'FSL & 2080'FWL, SEC.09)
Area	COLORADO	Well	AGGREGATE STATE 35N-E16HZ
Field	WELD COUNTY (KERR MCGEE)	Wellbore	AGGREGATE STATE 35N-E16HZ AWP
Facility	SEC.09-T2N-R66W		

WELLPATH DATA (163 stations)

MD [ft]	Inclination [°]	Azimuth [°]	TVD [ft]	Vert Sect [ft]	North [ft]	East [ft]	Latitude	Longitude	DLS [°/100ft]	Comments
7941.00	91.070	181.420	7217.00	754.21	-753.25	-587.39	40°08'59.479"N	104°47'10.871"W	1.39	
8032.00	91.940	180.470	7214.61	845.16	-844.20	-588.89	40°08'58.580"N	104°47'10.891"W	1.42	
8124.00	91.990	180.530	7211.46	937.11	-936.14	-589.69	40°08'57.672"N	104°47'10.901"W	0.08	
8216.00	91.290	179.660	7208.82	1029.07	-1028.10	-589.84	40°08'56.763"N	104°47'10.903"W	1.21	
8307.00	90.610	179.120	7207.31	1120.05	-1119.08	-588.87	40°08'55.864"N	104°47'10.891"W	0.95	
8398.00	89.690	179.210	7207.08	1211.04	-1210.07	-587.55	40°08'54.965"N	104°47'10.873"W	1.02	
8490.00	89.160	179.060	7208.00	1303.02	-1302.06	-586.16	40°08'54.056"N	104°47'10.856"W	0.60	
8582.00	89.160	178.960	7209.35	1394.99	-1394.03	-584.57	40°08'53.147"N	104°47'10.835"W	0.11	
8674.00	89.260	179.270	7210.62	1486.97	-1486.01	-583.15	40°08'52.238"N	104°47'10.817"W	0.35	
8766.00	89.160	179.250	7211.88	1578.95	-1578.00	-581.96	40°08'51.329"N	104°47'10.801"W	0.11	
8858.00	88.800	179.210	7213.52	1670.93	-1669.97	-580.73	40°08'50.420"N	104°47'10.785"W	0.39	
8950.00	88.950	179.100	7215.33	1762.89	-1761.95	-579.37	40°08'49.511"N	104°47'10.768"W	0.20	
9041.00	89.350	179.580	7216.68	1853.88	-1852.93	-578.32	40°08'48.612"N	104°47'10.754"W	0.69	
9133.00	90.360	179.760	7216.91	1945.87	-1944.93	-577.79	40°08'47.703"N	104°47'10.748"W	1.12	
9225.00	89.690	179.620	7216.87	2037.87	-2036.93	-577.29	40°08'46.794"N	104°47'10.741"W	0.74	
9317.00	89.500	179.320	7217.52	2129.86	-2128.92	-576.44	40°08'45.885"N	104°47'10.730"W	0.39	
9409.00	89.260	179.060	7218.52	2221.84	-2220.90	-575.14	40°08'44.976"N	104°47'10.713"W	0.38	
9500.00	90.550	179.870	7218.67	2312.84	-2311.90	-574.29	40°08'44.077"N	104°47'10.702"W	1.67	
9591.00	91.010	179.480	7217.43	2403.83	-2402.89	-573.78	40°08'43.177"N	104°47'10.696"W	0.66	
9683.00	90.920	180.060	7215.88	2495.81	-2494.87	-573.41	40°08'42.268"N	104°47'10.691"W	0.64	
9775.00	91.380	180.030	7214.03	2587.79	-2586.85	-573.48	40°08'41.359"N	104°47'10.692"W	0.50	
9865.00	90.300	179.620	7212.71	2677.78	-2676.84	-573.20	40°08'40.470"N	104°47'10.688"W	1.28	
9957.00	90.520	179.690	7212.06	2769.77	-2768.84	-572.65	40°08'39.561"N	104°47'10.681"W	0.25	
10049.00	90.640	179.160	7211.12	2861.76	-2860.83	-571.73	40°08'38.652"N	104°47'10.669"W	0.59	
10140.00	89.780	179.750	7210.79	2952.76	-2951.82	-570.86	40°08'37.753"N	104°47'10.658"W	1.15	
10232.00	90.060	179.790	7210.92	3044.75	-3043.82	-570.49	40°08'36.844"N	104°47'10.653"W	0.31	
10317.00	90.300	179.750	7210.65	3129.75	-3128.82	-570.15	40°08'36.004"N	104°47'10.649"W	0.29	
10487.00	89.930	180.040	7210.31	3299.75	-3298.82	-569.84	40°08'34.324"N	104°47'10.645"W	0.28	
10572.00	88.670	179.890	7211.35	3384.74	-3383.81	-569.79	40°08'33.484"N	104°47'10.644"W	1.49	
10657.00	88.670	179.900	7213.32	3469.72	-3468.79	-569.63	40°08'32.644"N	104°47'10.642"W	0.01	
10742.00	88.640	180.110	7215.32	3554.69	-3553.76	-569.64	40°08'31.804"N	104°47'10.642"W	0.25	
10827.00	88.640	180.120	7217.34	3639.67	-3638.74	-569.81	40°08'30.965"N	104°47'10.644"W	0.01	
10998.00	88.600	180.300	7221.45	3810.62	-3809.69	-570.44	40°08'29.275"N	104°47'10.652"W	0.11	
11083.00	88.330	180.190	7223.73	3895.59	-3894.66	-570.80	40°08'28.436"N	104°47'10.657"W	0.34	
11167.00	88.520	179.520	7226.04	3979.56	-3978.63	-570.59	40°08'27.606"N	104°47'10.654"W	0.83	
11252.00	89.250	180.040	7227.69	4064.54	-4063.61	-570.26	40°08'26.766"N	104°47'10.650"W	1.05	
11337.00	89.290	180.210	7228.78	4149.53	-4148.60	-570.45	40°08'25.926"N	104°47'10.652"W	0.21	
11422.00	89.350	180.230	7229.78	4234.53	-4233.59	-570.77	40°08'25.086"N	104°47'10.656"W	0.07	
11507.00	90.640	180.720	7229.79	4319.52	-4318.59	-571.48	40°08'24.246"N	104°47'10.666"W	1.62	
11592.00	91.530	181.630	7228.18	4404.49	-4403.55	-573.22	40°08'23.407"N	104°47'10.688"W	1.50	
11677.00	91.440	181.370	7225.98	4489.44	-4488.50	-575.44	40°08'22.567"N	104°47'10.717"W	0.32	
11762.00	91.350	181.620	7223.91	4574.38	-4573.44	-577.66	40°08'21.728"N	104°47'10.745"W	0.31	
11847.00	90.700	179.760	7222.39	4659.36	-4658.42	-578.68	40°08'20.888"N	104°47'10.758"W	2.32	
11933.00	91.230	180.360	7220.94	4745.35	-4744.41	-578.77	40°08'20.038"N	104°47'10.759"W	0.93	
12018.00	91.690	180.070	7218.78	4830.32	-4829.38	-579.09	40°08'19.199"N	104°47'10.763"W	0.64	

REFERENCE WELLPATH IDENTIFICATION			
Operator	KERR-MCGEE OIL & GAS ONSHORE LP	Slot	SLOT#02 AGGREGATE STATE 35N-E16HZ (2389'FSL & 2080'FWL, SEC.09)
Area	COLORADO	Well	AGGREGATE STATE 35N-E16HZ
Field	WELD COUNTY (KERR MCGEE)	Wellbore	AGGREGATE STATE 35N-E16HZ AWB
Facility	SEC.09-T2N-R66W		

WELLPATH DATA (163 stations)										
MD [ft]	Inclination [°]	Azimuth [°]	TVD [ft]	Vert Sect [ft]	North [ft]	East [ft]	Latitude	Longitude	DLS [°/100ft]	Comments
12103.00	90.550	179.760	7217.11	4915.30	-4914.36	-578.97	40°08'18.359"N	104°47'10.762"W	1.39	
12188.00	91.380	179.430	7215.68	5000.29	-4999.34	-578.37	40°08'17.519"N	104°47'10.754"W	1.05	
12273.00	91.320	179.750	7213.68	5085.26	-5084.32	-577.76	40°08'16.679"N	104°47'10.746"W	0.38	
12358.00	90.950	179.700	7212.00	5170.24	-5169.30	-577.35	40°08'15.840"N	104°47'10.741"W	0.44	
12443.00	90.370	178.760	7211.02	5255.22	-5254.29	-576.21	40°08'15.000"N	104°47'10.726"W	1.30	
12528.00	89.840	178.770	7210.86	5340.20	-5339.27	-574.38	40°08'14.160"N	104°47'10.703"W	0.62	
12614.00	90.700	179.060	7210.46	5426.18	-5425.25	-572.75	40°08'13.310"N	104°47'10.682"W	1.06	
12699.00	91.350	178.650	7208.94	5511.15	-5510.22	-571.05	40°08'12.471"N	104°47'10.660"W	0.90	
12784.00	90.550	178.840	7207.53	5596.11	-5595.18	-569.19	40°08'11.631"N	104°47'10.636"W	0.97	
12869.00	89.630	179.850	7207.39	5681.10	-5680.18	-568.22	40°08'10.791"N	104°47'10.623"W	1.61	
12953.00	89.900	179.460	7207.74	5765.10	-5764.17	-567.71	40°08'09.961"N	104°47'10.617"W	0.56	
13039.00	90.770	178.980	7207.23	5851.09	-5850.16	-566.54	40°08'09.111"N	104°47'10.602"W	1.16	
13123.00	89.930	180.290	7206.72	5935.08	-5934.16	-566.01	40°08'08.281"N	104°47'10.595"W	1.85	
13209.00	89.260	180.190	7207.33	6021.08	-6020.16	-566.37	40°08'07.431"N	104°47'10.599"W	0.79	
13294.00	88.020	180.560	7209.35	6106.05	-6105.13	-566.92	40°08'06.592"N	104°47'10.606"W	1.52	
13379.00	88.420	180.600	7211.99	6191.01	-6190.08	-567.78	40°08'05.752"N	104°47'10.617"W	0.47	
13464.00	89.100	180.470	7213.83	6275.98	-6275.06	-568.57	40°08'04.912"N	104°47'10.628"W	0.81	
13549.00	89.720	180.370	7214.70	6360.98	-6360.05	-569.20	40°08'04.072"N	104°47'10.636"W	0.74	
13634.00	90.150	179.850	7214.80	6445.98	-6445.05	-569.36	40°08'03.232"N	104°47'10.638"W	0.79	
13719.00	89.530	180.820	7215.04	6530.97	-6530.05	-569.86	40°08'02.393"N	104°47'10.644"W	1.35	
13805.00	88.020	181.470	7216.87	6616.94	-6616.01	-571.58	40°08'01.543"N	104°47'10.666"W	1.91	
13890.00	88.300	181.090	7219.60	6701.87	-6700.94	-573.47	40°08'00.704"N	104°47'10.691"W	0.56	
13975.00	89.410	181.190	7221.30	6786.84	-6785.91	-575.16	40°07'59.864"N	104°47'10.712"W	1.31	
14059.00	89.900	180.820	7221.81	6870.83	-6869.89	-576.64	40°07'59.034"N	104°47'10.731"W	0.73	
14145.00	91.010	180.800	7221.12	6956.82	-6955.88	-577.85	40°07'58.184"N	104°47'10.747"W	1.29	
14230.00	89.380	180.420	7220.84	7041.81	-7040.87	-578.76	40°07'57.345"N	104°47'10.758"W	1.97	
14315.00	90.120	180.950	7221.21	7126.80	-7125.86	-579.77	40°07'56.505"N	104°47'10.772"W	1.07	Last BHI MWD+IFR Surveys
14374.00	90.120	180.950	7221.08	7185.80	-7184.85	-580.75	40°07'55.922"N	104°47'10.784"W	0.00	Projection to Bit

HOLE & CASING SECTIONS - Ref Wellbore: AGGREGATE STATE 35N-E16HZ AWB Ref Wellpath: AGGREGATE STATE 35N-E16HZ AWP									
String/Diameter	Start MD [ft]	End MD [ft]	Interval [ft]	Start TVD [ft]	End TVD [ft]	Start N/S [ft]	Start E/W [ft]	End N/S [ft]	End E/W [ft]
13.5in Open Hole	16.00	1042.00	1026.00	16.00	1041.94	0.00	0.00	6.25	5.94
9.625in Casing Surface	16.00	1032.00	1016.00	16.00	1031.94	0.00	0.00	6.17	5.92
8.75in Open Hole	1042.00	7651.00	6609.00	1041.94	7217.08	6.25	5.94	-463.67	-572.62
7in Casing Intermediate	16.00	7641.00	7625.00	16.00	7216.73	0.00	0.00	-453.69	-572.06
6.125in Open Hole	7651.00	14374.00	6723.00	7217.08	7221.08	-463.67	-572.62	-7184.85	-580.75

REFERENCE WELLPATH IDENTIFICATION			
Operator	KERR-MCGEE OIL & GAS ONSHORE LP	Slot	SLOT#02 AGGREGATE STATE 35N-E16HZ (2389'FSL & 2080'FWL, SEC.09)
Area	COLORADO	Well	AGGREGATE STATE 35N-E16HZ
Field	WELD COUNTY (KERR MCGEE)	Wellbore	AGGREGATE STATE 35N-E16HZ AWP
Facility	SEC.09-T2N-R66W		

TARGETS									
Name	MD [ft]	TVD [ft]	North [ft]	East [ft]	Grid East [US ft]	Grid North [US ft]	Latitude	Longitude	Shape
SEC.09-T2N-R66W SECTION LINES		0.00	0.00	2.81	3200073.31	1298996.37	40°09'06.923"N	104°47'03.271"W	polygon
SEC.16-T2N-R66W SECTION LINES		0.00	0.00	2.81	3200073.31	1298996.37	40°09'06.923"N	104°47'03.271"W	polygon
SEC.09-T2N-R66W HARD LINES (460' SETBACKS)		7.00	-0.40	-440.81	3199629.73	1298992.39	40°09'06.919"N	104°47'08.984"W	polygon
AGGREGATE STATE 35N-E16HZ BHL (460'FSL & 1510'FWL, SEC.16) REV-2		7217.00	-7210.52	-582.26	3199546.48	1291781.68	40°07'55.668"N	104°47'10.803"W	point
AGGREGATE STATE 35N-E16HZ BHL ON PLAT (460'FSL & 1460'FWL, SEC.16) REV-1		7217.00	-7210.52	-629.45	3199499.30	1291781.30	40°07'55.668"N	104°47'11.411"W	point
AGGREGATE STATE 35N-E16HZ LAND BOX		7217.00	0.00	2.81	3200073.31	1298996.37	40°09'06.923"N	104°47'03.271"W	polygon

WELLPATH COMPOSITION - Ref Wellbore: AGGREGATE STATE 35N-E16HZ AWP					Ref Wellpath: AGGREGATE STATE 35N-E16HZ AWP	
Start MD [ft]	End MD [ft]	Positional Uncertainty Model	Log Name/Comment		Wellbore	
16.00	900.00	Generic gyro - continuous (Standard)	MS ENERGY GYRO SURVEYS <116-900>		AGGREGATE STATE 35N-E16HZ AWP	
900.00	7604.00	NaviTrak (MAGCORR,IFR)	BHI MWD+IFR SURVEYS 8 3/4" HOLE <1087-7604>		AGGREGATE STATE 35N-E16HZ AWP	
7604.00	14315.00	NaviTrak (MAGCORR,IFR)	BHI MWD+IFR SURVEYS 6 1/8" HOLE <7666-14315>		AGGREGATE STATE 35N-E16HZ AWP	
14315.00	14374.00	Blind Drilling (std)	Projection to bit		AGGREGATE STATE 35N-E16HZ AWP	

REFERENCE WELLPATH IDENTIFICATION			
Operator	KERR-MCGEE OIL & GAS ONSHORE LP	Slot	SLOT#02 AGGREGATE STATE 35N-E16HZ (2389'FSL & 2080'FWL, SEC.09)
Area	COLORADO	Well	AGGREGATE STATE 35N-E16HZ
Field	WELD COUNTY (KERR MCGEE)	Wellbore	AGGREGATE STATE 35N-E16HZ AWB
Facility	SEC.09-T2N-R66W		

WELLPATH COMMENTS				
MD [ft]	Inclination [°]	Azimuth [°]	TVD [ft]	Comment
16.00	0.000	65.240	16.00	Tie-On
116.00	0.790	65.240	116.00	Begin GYRO Surveys
900.00	0.670	352.080	899.95	Tie-Into GYRO Surveys
1087.00	0.440	23.810	1086.94	Begin BHI MWD+IFR Surveys
7641.00	87.708	183.042	7216.73	7" Casing Point
14315.00	90.120	180.950	7221.21	Last BHI MWD+IFR Surveys
14374.00	90.120	180.950	7221.08	Projection to Bit