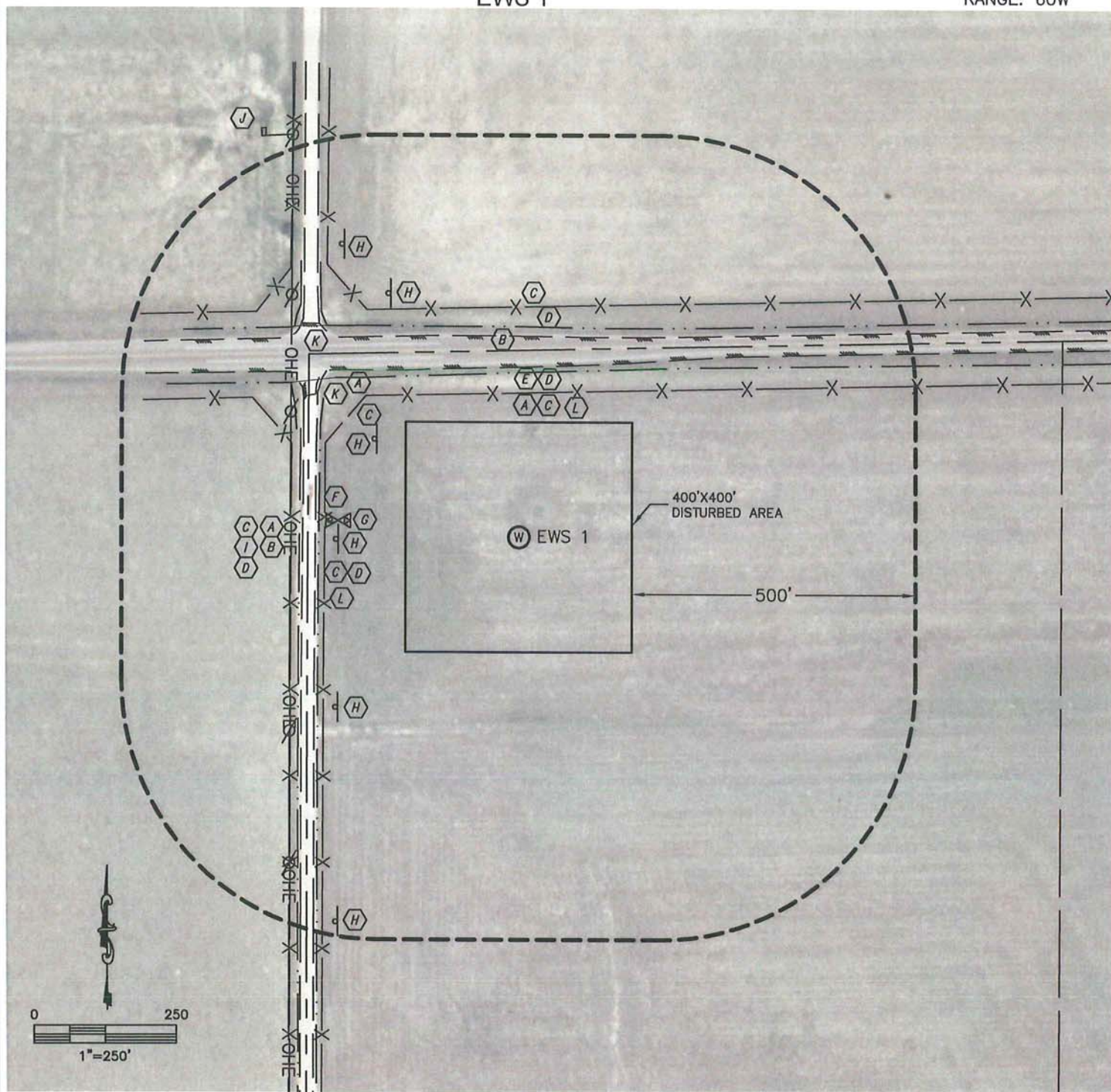


LOCATION DRAWING

EWS 1

SECTION: 26
TOWNSHIP: 8N
RANGE: 60W

- A** PROPERTY LINE 250'N, 372'W, 364'NW
- B** SECTION LINE 372'W, 325'N
- C** FENCE LINE 251'N, 400'N, 342'W, 401'W, 365'NW
- D** BORROW DITCH 286'N, 366'N, 352'W, 386'W
- E** SOUTH EDGE OF ASPHALT ROAD (HWY14) 296'N
- F** EAST EDGE OF GRAVEL ROAD (WCR105) 358'W
- G** GAS VALVE 320'W
- H** GAS LINE SIGN 596'NW, 481'NW, 303'NW, 318'W, 435'SW, 742'SW
- I** OVERHEAD UTILITY LINE 403'W
- J** WATER WELL 836'NW
- K** CULVERT 425'NW, 501'NW
- L** RIGHT-OF-WAY LINE 250'N, 342'W

LEGEND

- GAS LINE SIGN
- UTILITY POLE
- GAS VALVE