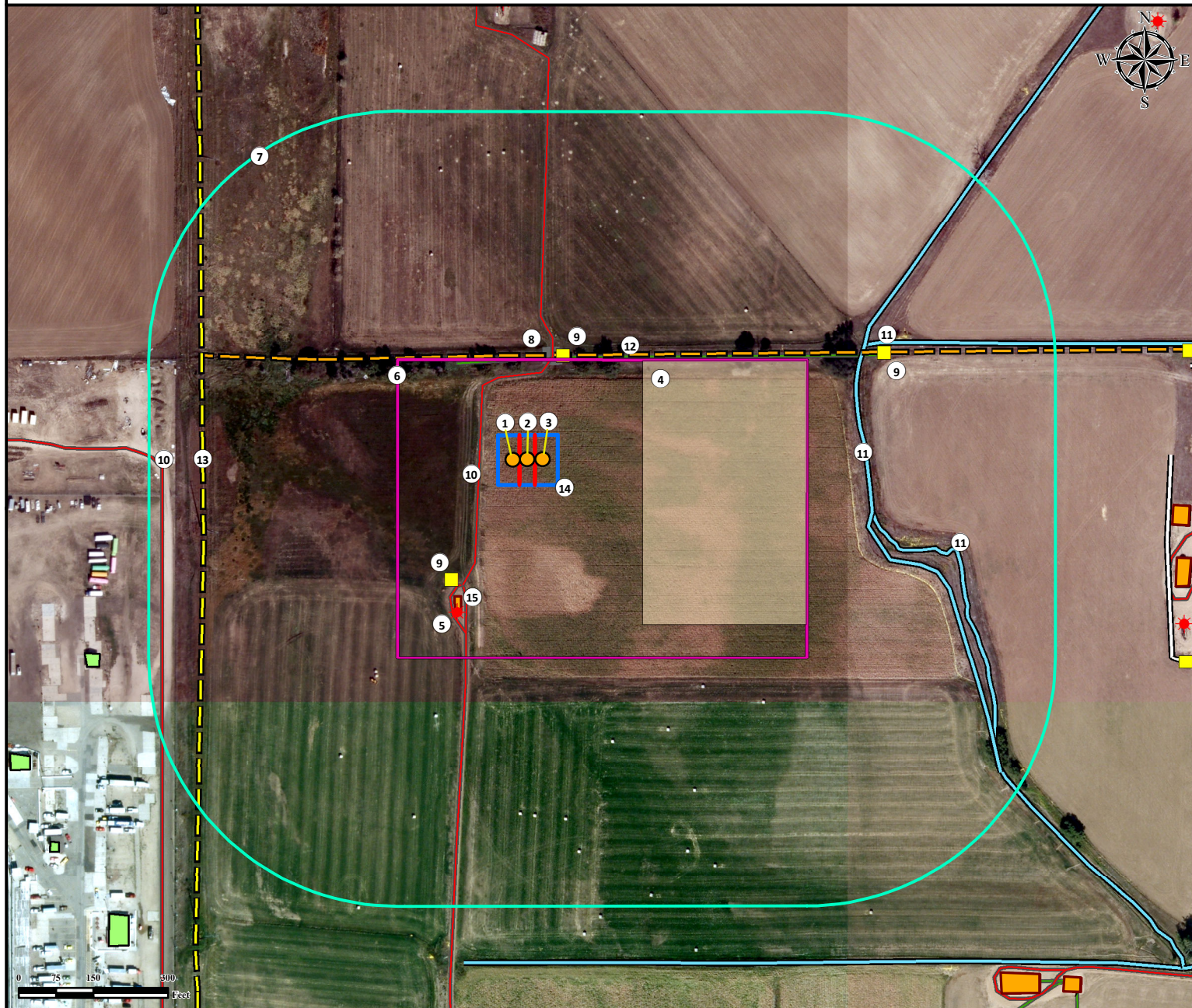


# Location Drawing

## FRONT RANGE FARMS 15C-14HZ

### Horizontal Multi Well Pad

NW¼ SE¼ SECTION 11, TOWNSHIP 1 NORTH, RANGE 68 WEST OF THE 6TH PRINCIPAL MERIDIAN



1. Proposed Well FRONT RANGE FARMS 36N-14HZ.
2. Proposed Well FRONT RANGE FARMS 15C-14HZ.
3. Proposed Well FRONT RANGE FARMS 15N-14HZ.
4. Proposed Facility FRONT RANGE FARMS 15C-14HZ is  $\pm 230'$  E.
5. Existing Well UPRR 43 PAN AM I 11 is  $\pm 337'$  SW.
6. Operational Disturbance Area.
7. 500' Radius.

8. Gate is  $\pm 213'$  N.
9. Utility Boxes are  $\pm 219'$  NE,  $\pm 285'$  SW, and  $\pm 747'$  NE.
10. Private Roads are  $\pm 98'$  W and  $\pm 734'$  W.
11. Ditches are  $\pm 669'$  E,  $\pm 710'$  SE, and  $\pm 715'$  NE.
12. Fence is  $\pm 210'$  N.
13. Powerline is  $\pm 653'$  W.
14. Pump Jack Operations Area.
15. Existing Facility is  $\pm 305'$  SW.

Legend		Reference Location	
<span style="color: orange;">●</span> Proposed Well	<span style="border: 1px solid magenta;"> </span> Disturbance Area	<b>** All measurements are made from Reference Well FRONT RANGE FARMS 15C-14HZ **</b> <b>Lat: 40.065227° Long: -104.968043° (NAD83)</b> <b>Elevation: 5045 Feet</b>	
<span style="color: red;">★</span> Existing Well	<span style="border: 1px solid cyan;"> </span> 500' Radius		
<span style="color: yellow;">■</span> Utility Box	<span style="border: 1px solid orange;"> </span> Facility Enclosure	Surface Use: Irrigated Crop	
<span style="color: gray;">■</span> Gate	<span style="border: 1px solid blue;"> </span> Pump Jack Operations Area	Nearest Building Unit: >1000' E	
	<span style="border: 1px solid brown;"> </span> Proposed Facility	Prepared for: <b>Anadarko</b> Petroleum Corporation	
		<b>KERR-MCGEE OIL &amp; GAS ONSHORE LP</b>	
<b>Field Date:</b> 11/21/2013 <b>Drafting Date:</b> 05/29/2014 <b>Drafter:</b> DRF <b>Revision:</b> 4		<b>Data Sources:</b> - Aerial courtesy of Anadarko Petroleum Corporation (2010)	



Use our resources to find yours!  
[www.petro-fs.com](http://www.petro-fs.com)  
 (303) 928-7128