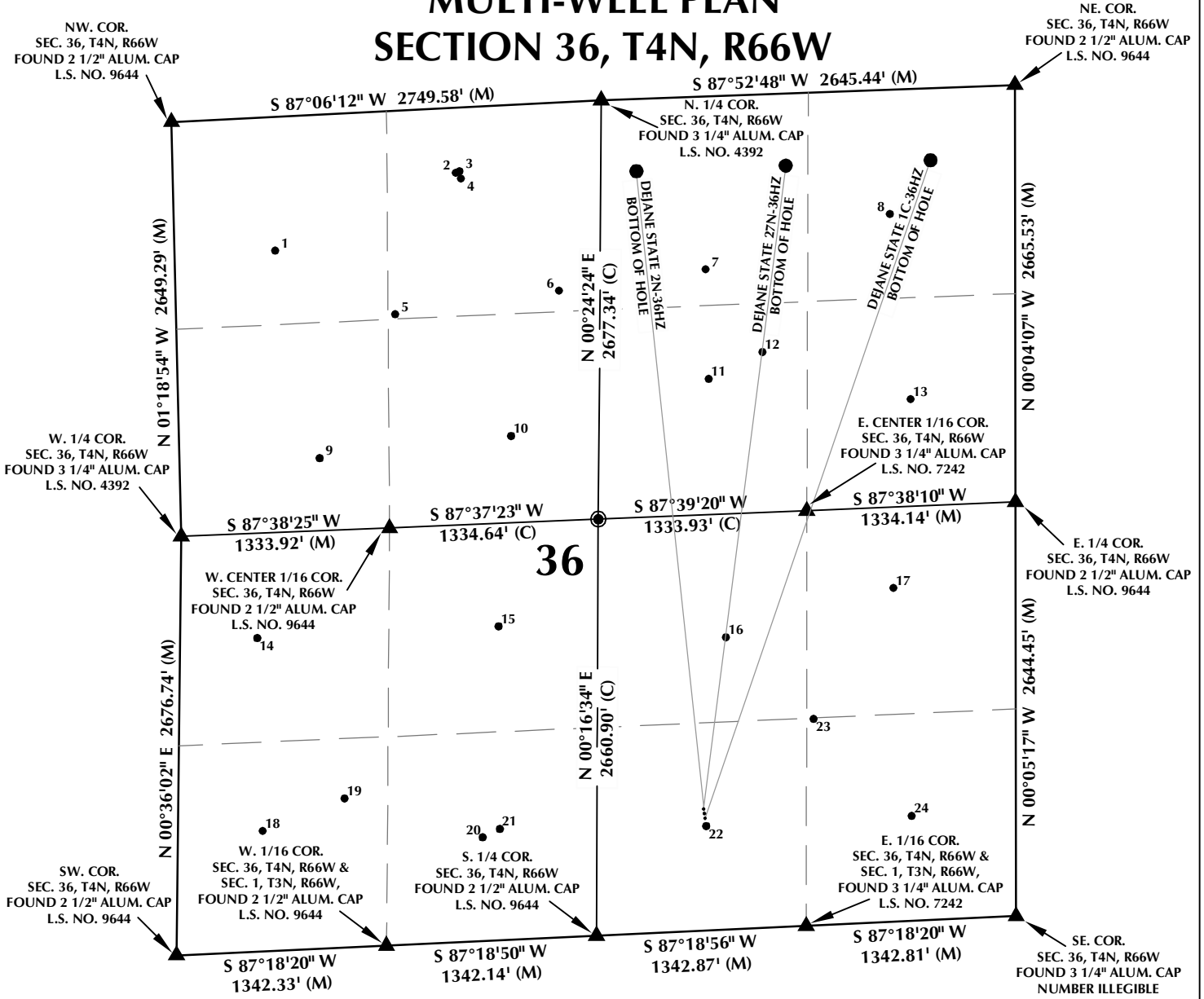


# MULTI-WELL PLAN SECTION 36, T4N, R66W



**WELL NOTES:**

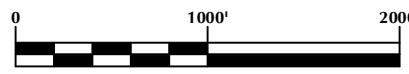
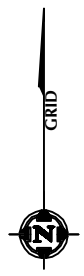
DEJANE STATE 27N-36HZ  
SURFACE: 776' FSL, 1996' FEL  
BOTTOM HOLE: 460' FNL, 1465' FEL

DEJANE STATE 2N-36HZ  
SURFACE: 746' FSL, 1992' FEL  
BOTTOM HOLE: 460' FNL, 2420' FEL

DEJANE STATE 1C-36HZ  
SURFACE: 716' FSL, 1987' FEL  
BOTTOM HOLE: 460' FNL, 540' FEL

**NOTES:**

- ▲ INDICATES FOUND SECTION CORNER
- INDICATES CALCULATED CORNER
- BASIS OF BEARING DERIVED FROM COLORADO COORDINATE SYSTEM 1983 NORTH ZONE UNLESS OTHERWISE NOTED.
- ALL MEASURED DISTANCES ARE GRID.
- COMBINED SCALE FACTOR: .99972797
- WELL FOOTAGES ARE MEASURED AT RIGHT ANGLES TO THE SECTION LINES.



SCALE: 1" = 1000'

**WELL PAD - DEJANE STATE 2N-36HZ**

MULTI-WELL PLAN  
DEJANE STATE 27N-36HZ,  
DEJANE STATE 2N-36HZ &  
DEJANE STATE 1C-36HZ  
LOCATED IN SECTION 36  
T4N, R66W, 6TH P.M.  
WELD COUNTY, COLORADO

**Kerr-McGee Oil &  
Gas Onshore L.P.**

1099 18th Street  
Denver, Colorado 80202



**CONSULTING, LLC**

**SHERIDAN OFFICE**  
2155 North Main Street  
Sheridan, Wyoming 82801  
Phone 307-674-0609

**LOVELAND OFFICE**  
1635 Foxtrail Drive, Suite 204  
Loveland, Colorado 80538  
Phone 970-776-4331

DRAFTED BY:	APF	CHECKED BY:	BJR	SHEET NO:
DATE DRAFTED:	11/8/13	DATE SURVEYED:	10/23/13	<b>1</b>
REVISED:	11/22/13	FILE NAME:	13-100	1 OF 2

K:\ADARKO\2013\13\_100\_COLORADO\_T4N66W\_SECS36\PLAN\S\DEJANE 2N-36HZ MULTI-WELL PLAN SHEET L.dwg, 11/20/2013 4:16:32 PM, lbb

# MULTI-WELL PLAN SECTION 36, T4N, R66W

NUMBER	WELL NAME	NAD 83	
		LATITUDE	LONGITUDE
1	STATE 36-4F	40.273424°	-104.732489°
2	BERIG STATE K 36-29	40.274765°	-104.728334°
3	BERIG STATE K 36-28	40.274789°	-104.728252°
4	STATE 36-3F	40.274662°	-104.728222°
5	BERIG STATE K 36-19	40.272289°	-104.729752°
6	BERIG STATE K 36-18	40.272680°	-104.725998°
7	HSR-CORVI 2-36	40.273030°	-104.722636°
8	HSR-ACKER 1-36	40.273972°	-104.718403°
9	STATE 36-5F	40.269776°	-104.731509°
10	STATE 36-6F	40.270137°	-104.727121°
11	*STATE Z B 1	40.271106°	-104.722587°
12	*STATE OF COLORADO "Z" 1	40.271572°	-104.721350°
13	HSR-YOUNG 8-36	40.270724°	-104.717967°
14	HSR-HARMON 12-36	40.266630°	-104.732977°
15	HSR-CONLEY 11-36A	40.266801°	-104.727445°
16	HSR-HEARST 10-36	40.266574°	-104.722245°
17	HSR-CARROLL 9-36	40.267412°	-104.718398°
18	HSR-DAYLEY 13-36	40.263248°	-104.732891°
19	HSR-RAPP 13-36	40.263806°	-104.731007°
20	STEPHENS STATE 35-36	40.263101°	-104.727855°
21	*HSR-SAWDY 14-36	40.263246°	-104.727459°
22	HSR-EBAUGH 15-36	40.263265°	-104.722732°
23	SLAVIN STATE 20-36	40.265126°	-104.720255°
24	HSR-SALINSKY 16-36	40.263410°	-104.718028°

**NOTES:**

- \* INDICATES EXISTING WELLS THAT WERE NOT SURVEYED BUT DERIVED FROM COLORADO OIL AND GAS CONSERVATION COMMISSION (COGCC).

**EXISTING WELL EXHIBIT  
SECTION 36, T4N, R66W, 6TH P.M.  
WELD COUNTY, COLORADO**

**Kerr-McGee Oil &  
Gas Onshore L.P.  
1099 18th Street  
Denver, Colorado 80202**



**CONSULTING, LLC**

**SHERIDAN OFFICE**  
2155 North Main Street  
Sheridan, Wyoming 82801  
Phone 307-674-0609

**LOVELAND OFFICE**  
1635 Foxtrail Drive, Suite 204  
Loveland, Colorado 80538  
Phone 970-776-4331

DRAFTED BY:	APF	CHECKED BY:	BJR	SHEET NO: <b>2</b> 2 OF 2
DATE DRAFTED:	11/8/13	DATE SURVEYED:	10/23/13	
REVISED:		FILE NAME:	13-100	