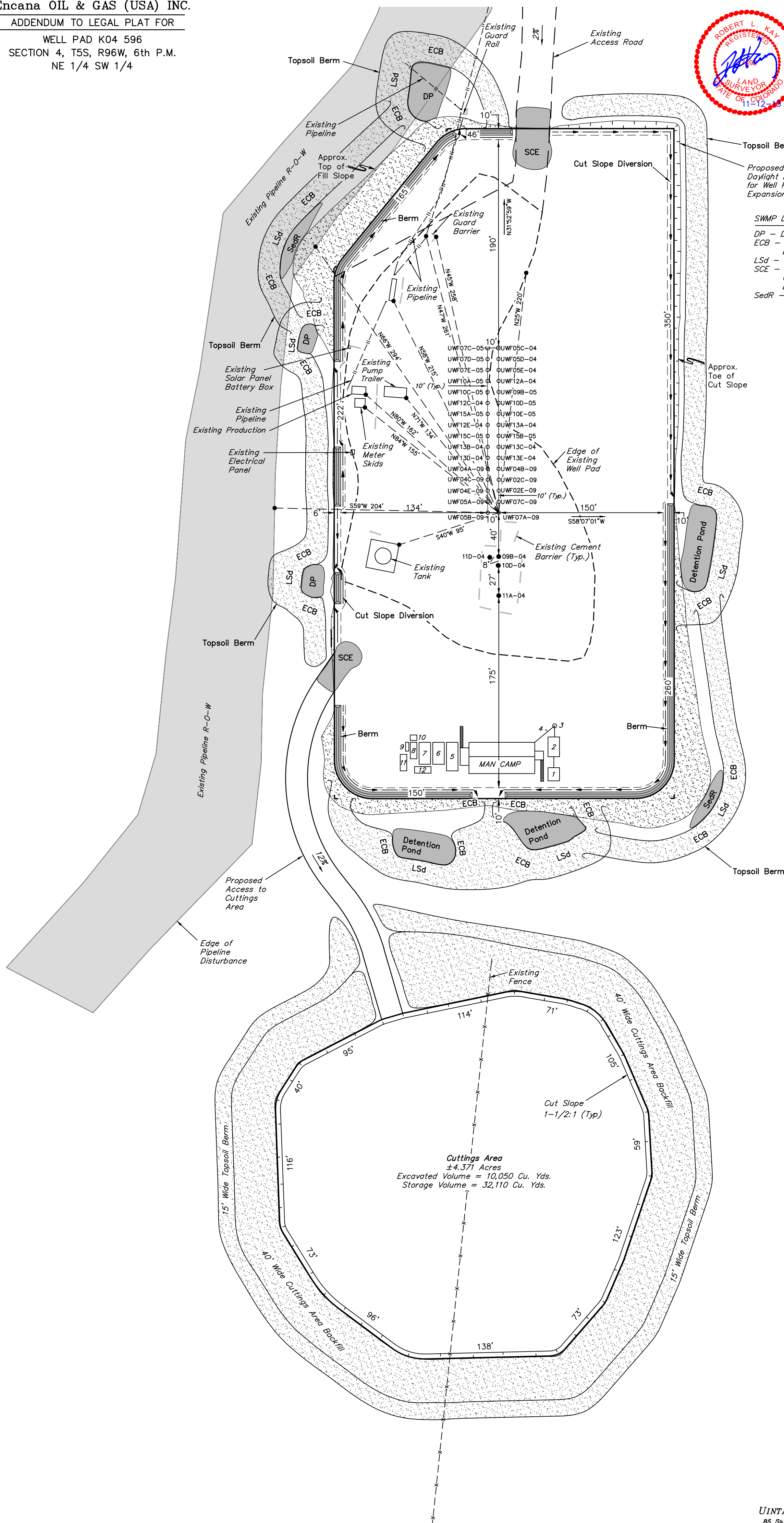


Encana OIL & GAS (USA) INC.  
ADDENDUM TO LEGAL PLAT FOR  
WELL PAD K04 596  
SECTION 4, T5S, R96W, 6th P.M.  
NE 1/4 SW 1/4

DATE: 04-18-12  
DRAWN BY: C.A.G.  
REVISED: 04-24-12  
REVISED: 10-16-12 M.D.  
REVISED: 11-08-13 T.B.

60' 30' 0' 60'  
SCALE  
Sheet 1bbb of 9





# Encana OIL & GAS (USA) INC.

## CONSTRUCTION LAYOUT FOR

WELL PAD K04 596

SECTION 4, T5S, R96W, 6th P.M.

NE 1/4 SW 1/4

0.92 Ac. to Det. Pond #6  
4,000 cu.ft./Ac. Pad  
Vol. = 3,680 cu.ft.  
L= 51', W=30', D=6'

0.17 Ac. to Sed. Res. #2  
3,600 cu.ft./Ac. Drainage  
Vol. = 612 cu.ft.  
L= 73', W=7', D=3'

0.21 Ac. to Det. Pond #5  
4,000 cu.ft./Ac. Pad  
Vol. = 840 cu.ft.  
L= 24', W=15', D=6'

0.24 Ac. to Det. Pond #4  
4,000 cu.ft./Ac. Pad  
Vol. = 960 cu.ft.  
L= 30', W=20', D=4'

0.60 Ac. to Det. Pond #3  
4,000 cu.ft./Ac. Pad  
Vol. = 2,400 cu.ft.  
L= 56', W=27', D=4'

1.02 Ac. to Det. Pond #2  
4,000 cu.ft./Ac. Pad  
Vol. = 4,080 cu.ft.  
L= 57', W=30', D=6'

0.18 Ac. to Sed. Res. #1  
3,600 cu.ft./Ac. Drainage  
Vol. = 648 cu.ft.  
L= 54', W=10', D=3'

1.18 Ac. to Det. Pond #1  
4,000 cu.ft./Ac. Pad  
Vol. = 4,720 cu.ft.  
L= 76', W=26', D=6'

### SWMP LEGEND:

- DP - DETENTION POND
- ECB - EROSION CONTROL BLANKET
- LSD - LEVEL SPREADER
- SCE - STABILIZED CONSTRUCTION ENTRANCE
- SedR - SEDIMENT RESERVOIR
- SL - SLASH
- TB - TOE BERM
- VB - VEGETATED BUFFER
- W - WATTLE

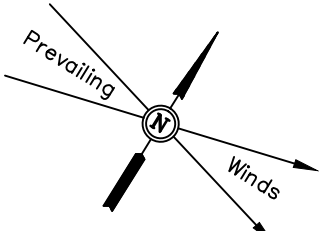
NOTE:  
2' CONTOUR INTERVAL.

### LEGEND:

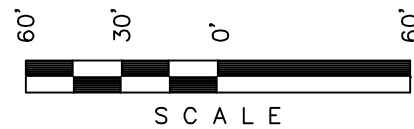
- 1 - OVERFLOW
- 2 - SEWER TANK
- 3 - LIFT STATION
- 4 - SEWER LINE
- 5 - WATER TANK (FIRE SUPPRESSION, 2500 Gals.)
- 6 - FREEZER
- 7 - STORAGE
- 8 - GENERATOR
- 9 - FUEL
- 10 - TRANSFORMER
- 11 - BEAR PROOF TRASH CANS (2) 30 GALLON
- 12 - WATER TANK

### LEGEND:

EG = Existing Ground  
FG = Finished Grade



DATE: 04-18-12  
DRAWN BY: C.A.G.  
REVISED: 04-24-12  
REVISED: 10-16-12 M.D.  
REVISED: 07-17-13 T.B.  
REVISED: 11-08-13 T.B.



Sheet 3 of 9



Elev. Ungraded Ground At Loc. Stake = 8198.9  
FINISHED GRADE ELEV. AT LOC. STAKE = 8199.1

UTAH ENGINEERING & LAND SURVEYING  
85 So. 200 East • Vernal, Utah 84078 • (435) 788-1017



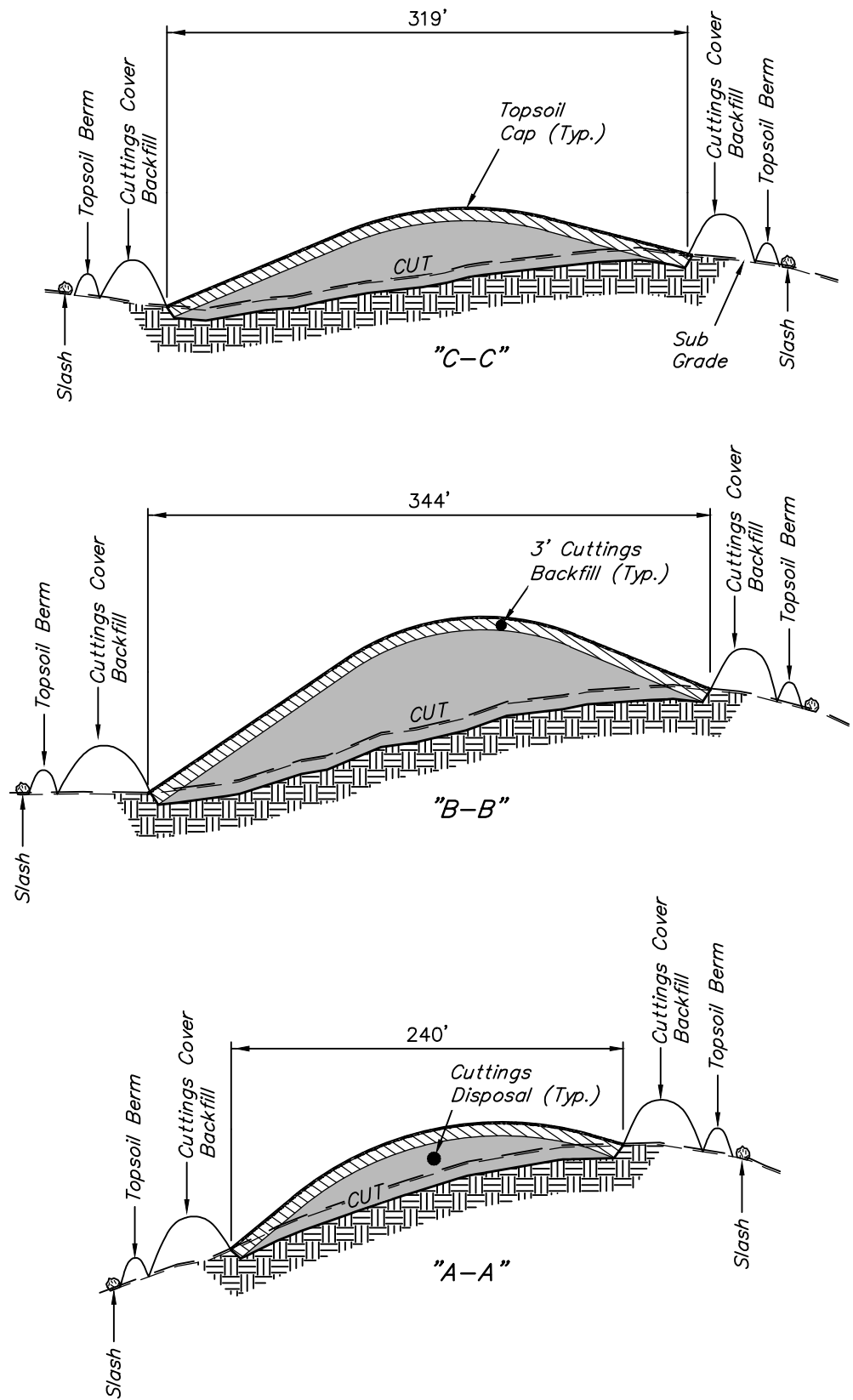
1" = 40'  
X-Section  
Scale  
1" = 100'

DATE: 04-18-12  
DRAWN BY: C.A.G.  
REVISED: 07-17-13 T.B.  
REVISED: 11-08-13 T.B.

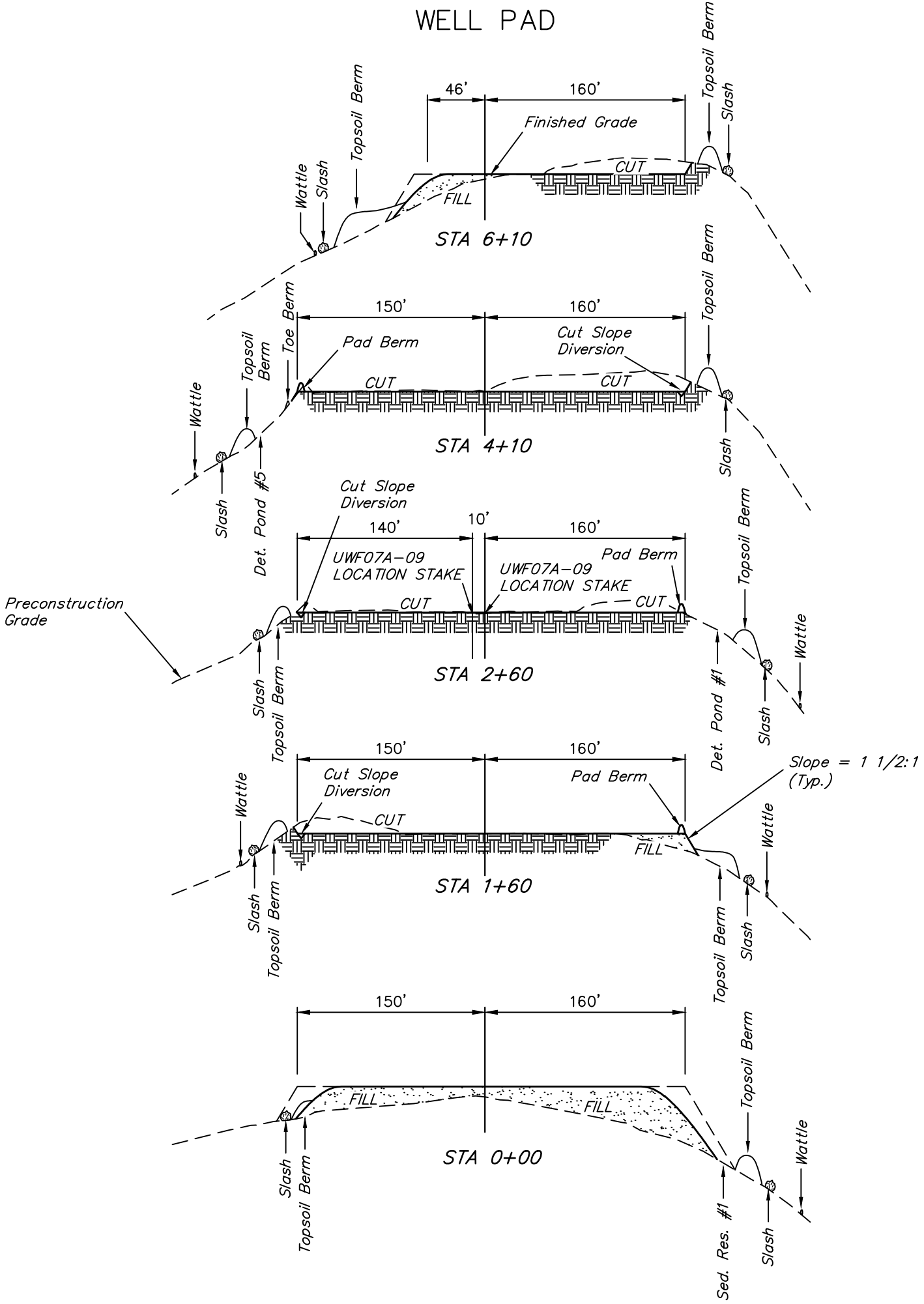
Encana OIL & GAS (USA) INC.  
CONSTRUCTION LAYOUT CROSS SECTIONS FOR  
WELL PAD K04 596  
SECTION 4, T5S, R96W, 6th P.M.  
NE 1/4 SW 1/4



CUTTINGS AREA



WELL PAD



NOTE:  
Topsoil should not be  
Stripped Below Finished  
Grade on Substructure Area.

\* NOTE:  
FILL QUANTITY INCLUDES  
5% FOR COMPACTION

WELL PAD APPROXIMATE YARDAGES

(6") Topsoil Stripping (New Construction Only)	=	5,900	Cu. Yds.
Remaining Location	=	12,030	Cu. Yds.
TOTAL CUT	=	17,930	CU.YDS.
FILL	=	12,030	CU.YDS.

EXCESS MATERIAL	=	5,900	Cu. Yds.
Topsoil	=	5,900	Cu. Yds.
EXCESS UNBALANCE (After Interim Rehabilitation)	=	0	Cu. Yds.

CUTTINGS AREA APPROXIMATE YARDAGES

(6") Topsoil Stripping	=	3,530	Cu. Yds.
Remaining Location	=	10,050	Cu. Yds.
TOTAL CUT	=	13,580	CU.YDS.
FILL	=	0	CU.YDS.

EXCESS MATERIAL	=	13,580	Cu. Yds.
Topsoil	=	3,530	Cu. Yds.
3' Cuttings Backfill	=	10,050	Cu. Yds.
EXCESS UNBALANCE (After Interim Rehabilitation)	=	0	Cu. Yds.

WELL PAD K04 596

DATE: 04-18-12  
DRAWN BY: C.A.G.  
REVISED: 10-16-12 M.D.  
REVISED: 11-08-13 T.B.

Sheet 5 of 9



SCE - STABILIZED  
CONSTRUCTION  
ENTRANCE  
FCD - FLOW CONTROL DITCH  
RV - REVEGETATION

SCE-STABILIZED CONTROL ENTRANCE  
FCD - FLOW CONTROL DITCH  
RV - REVEGATION

TOTAL RECLAIMED AREA =  $\pm$  6.773 ACRES  
UN-RECLAIMED AREA =  $\pm$  1.935 ACRES

UINTAH ENGINEERING & LAND SURVEYING  
85 So. 200 East \* Vernal, Utah 84078 \* (435) 789-1017