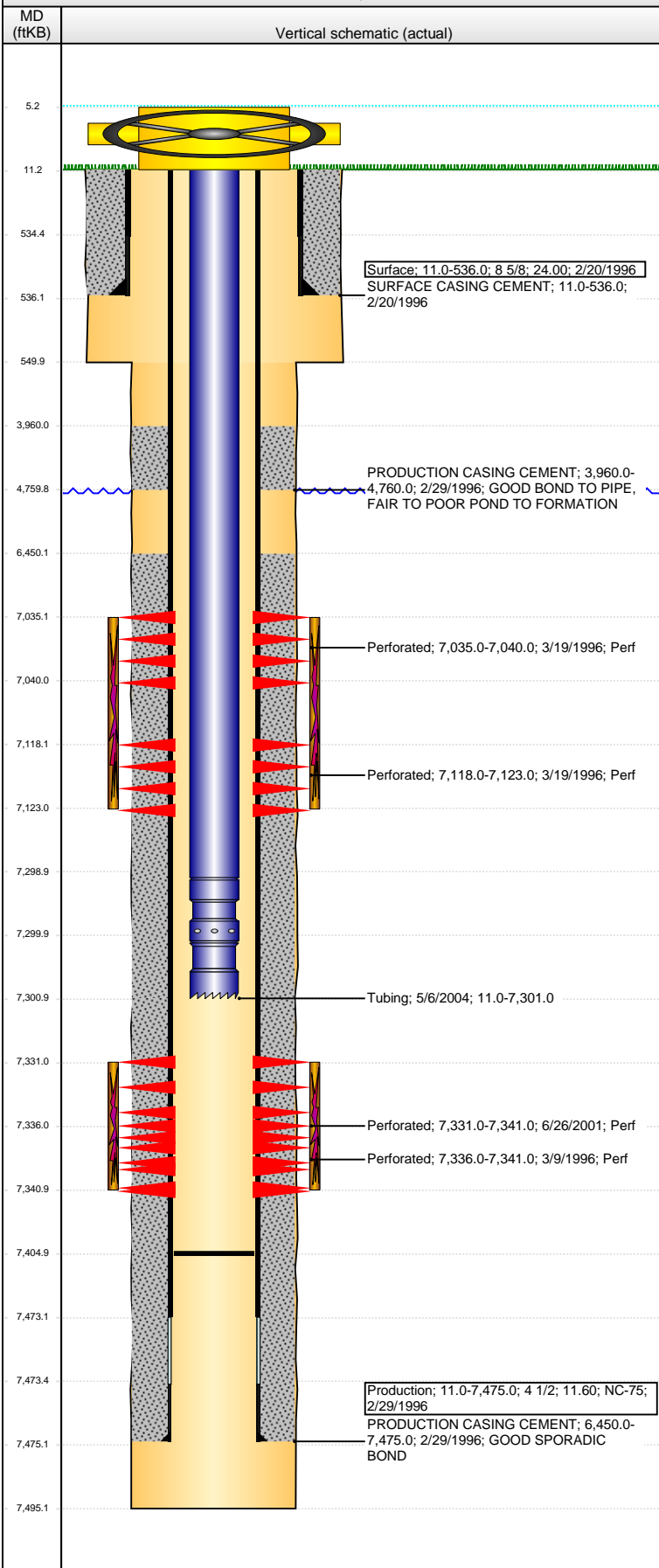


Well Name: BROSNAHAN 13-30

DEVIATED - ORIGINAL HOLE, 5/29/2014 1:39:51 PM



Well Header										
API	05-123-18990		Business Unit	WATTENBERG		District	15		Well Config	DEVIATED
Original KB Elevation (ft)	4,852.00		KB - GL / MSL (ftKB)	11.00		Spud Date	2/20/1996		P & A Date	
Comment DV TOOL @ +/- 475'										
Directions To Well										
Congressional Location										
Quarter 1	Quarter 2	Quarter 3	Quarter 4	Section	Township	Twnshp N...	Range	Rng E/W Dir		
		NW	SW	30	4	N	64	W		
Bottom Hole Location										
North-South Distance (ft)		From N or S Line		East-West Distance (ft)		From E or W Line				
2,138.0		FSL		770.0		FWL				
Plug Back Total Depths										
Date	Depth (ftKB)	Method		Com						
3/5/1996	7,392.0	CASED HOLE LOG		DEPTH LOGGER ON CBL						
5/6/2004	7,405.0	TAG		BAIL SAND TO LAND TUBING						
Wellbore Sections										
Section Des		Size (in)		Act Top, MD (ftKB)		Act Btm, MD (ftKB)				
SURFACE		12 1/4		11.0		550.0				
PRODUCTION		7 7/8		550.0		7,495.0				
Zone Statuses										
Zone Name	Status Date	Status		Job						
NIOBRARA	3/26/1996	PR		DRILLING/COMPLETION - ORIGINAL, 2/20/1996 00:00						
NIOBRARA	7/15/2001	PR		RE-FRAC, 6/26/2001 00:00						
CODELL	3/26/1996	PR		DRILLING/COMPLETION - ORIGINAL, 2/20/1996 00:00						
CODELL	7/15/2001	PR		RE-FRAC, 6/26/2001 00:00						
Casing Strings										
Surface, 536.0ftKB										
Casing Description	Run Date	OD (in)	Wt/Len (l...)	Grade	Top, MD (ft...)	MD (ftKB)				
Surface	2/20/1996	8 5/8	24.00		11.0	536.0				
Production, 7,475.0ftKB										
Casing Description	Run Date	OD (in)	Wt/Len (l...)	Grade	Top, MD (ft...)	MD (ftKB)				
Production	2/29/1996	4 1/2	11.60	NC-75	11.0	7,475.0				
Cement										
Description					Top Depth (ftKB)	Bottom Depth (ftKB)				
SURFACE CASING CEMENT					11.0	536.0				
Description					Top Depth (ftKB)	Bottom Depth (ftKB)				
PRODUCTION CASING CEMENT					3,960.0	4,760.0				
Description					Top Depth (ftKB)	Bottom Depth (ftKB)				
PRODUCTION CASING CEMENT					6,450.0	7,475.0				
Tubing Components										
Item Des	OD (in)	Wt (lb/ft)	Grade	Jts	Len (ft)	Btm (ftKB)	Btm (TVD) (ftKB)			
EUE 8rd Tubing	2 3/8	4.70	J-55	236	7,288.00	7,299.0				
Seal Nipple	2 3/8			1	1.00	7,300.0				
Notched collar	2 3/8			1	1.00	7,301.0				
Perforation Data										
Zone	Bnch/St g	Entered Shot Total		Top (ftKB)	Btm (ftKB)		Date			
NIOBRARA, ORIGINAL HOLE	B	20		7,035.00	7,040.00		3/19/1996			
NIOBRARA, ORIGINAL HOLE	C	20		7,118.00	7,123.00		3/19/1996			
CODELL, ORIGINAL HOLE		40		7,331.00	7,341.00		6/26/2001			
CODELL, ORIGINAL HOLE		20		7,336.00	7,341.00		3/9/1996			
Stimulations & Treatments										
Date	Zone	Primary Job Type								
3/11/1996	CODELL, ORIGINAL HOLE	DRILLING/COMPLETION - ORIGINAL								
Technical Result		Tech Result Details				Tech Result Note				
Comment										
Date	Zone	Primary Job Type								
3/20/1996	NIOBRARA, ORIGINAL HOLE	DRILLING/COMPLETION - ORIGINAL								
Technical Result		Tech Result Details				Tech Result Note				
Comment										

Well Name: BROSNAHAN 13-30

DEVIATED - ORIGINAL HOLE, 5/29/2014 1:39:54 PM

Stimulations & Treatments

Date	Zone	Primary Job Type
6/28/2001	CODELL, ORIGINAL HOLE	RE-FRAC
Technical Result	Tech Result Details	Tech Result Note
Comment		

Other In Hole

Run Date	Des	OD (in)	Top (ftKB)	Btm (ftKB)

Logs

Date	Type	Top, MD (ftKB)	Btm, MD (ftKB)
2/28/1996	COMPENSATED DENSITY	4,000.0	7,058.0
2/28/1996	INDUCTION	536.0	7,058.0
3/5/1996	CEMENT BOND	3,850.0	7,386.0
3/5/1996	GAMMA RAY	6,700.0	7,384.0

